

APPENDIX B.

CENSUS DATA, 1986/1988, 1989

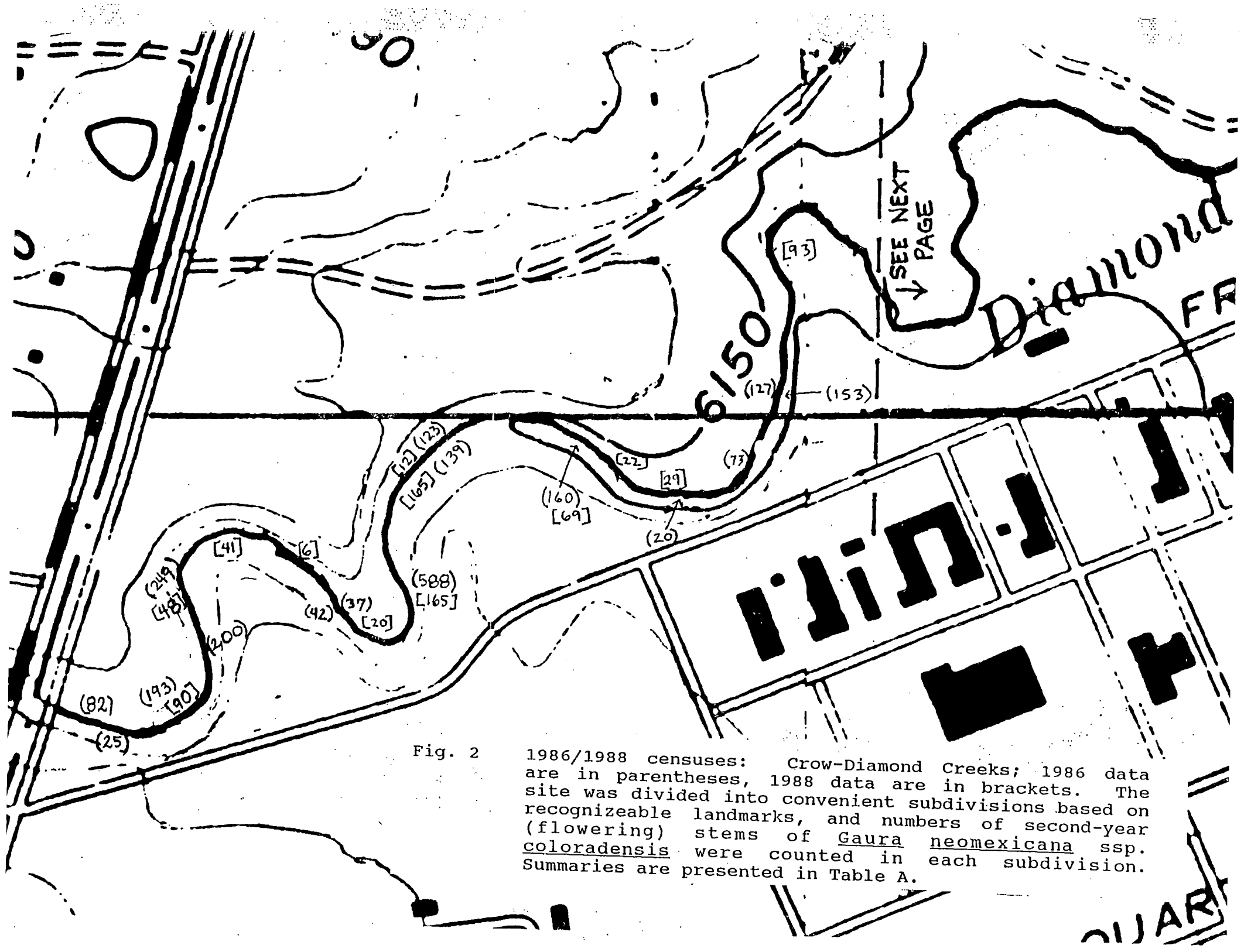


Fig. 2

1986/1988 censuses: Crow-Diamond Creeks; 1986 data are in parentheses, 1988 data are in brackets. The site was divided into convenient subdivisions based on recognizable landmarks, and numbers of second-year (flowering) stems of Gaura neomexicana ssp. coloradensis were counted in each subdivision. Summaries are presented in Table A.

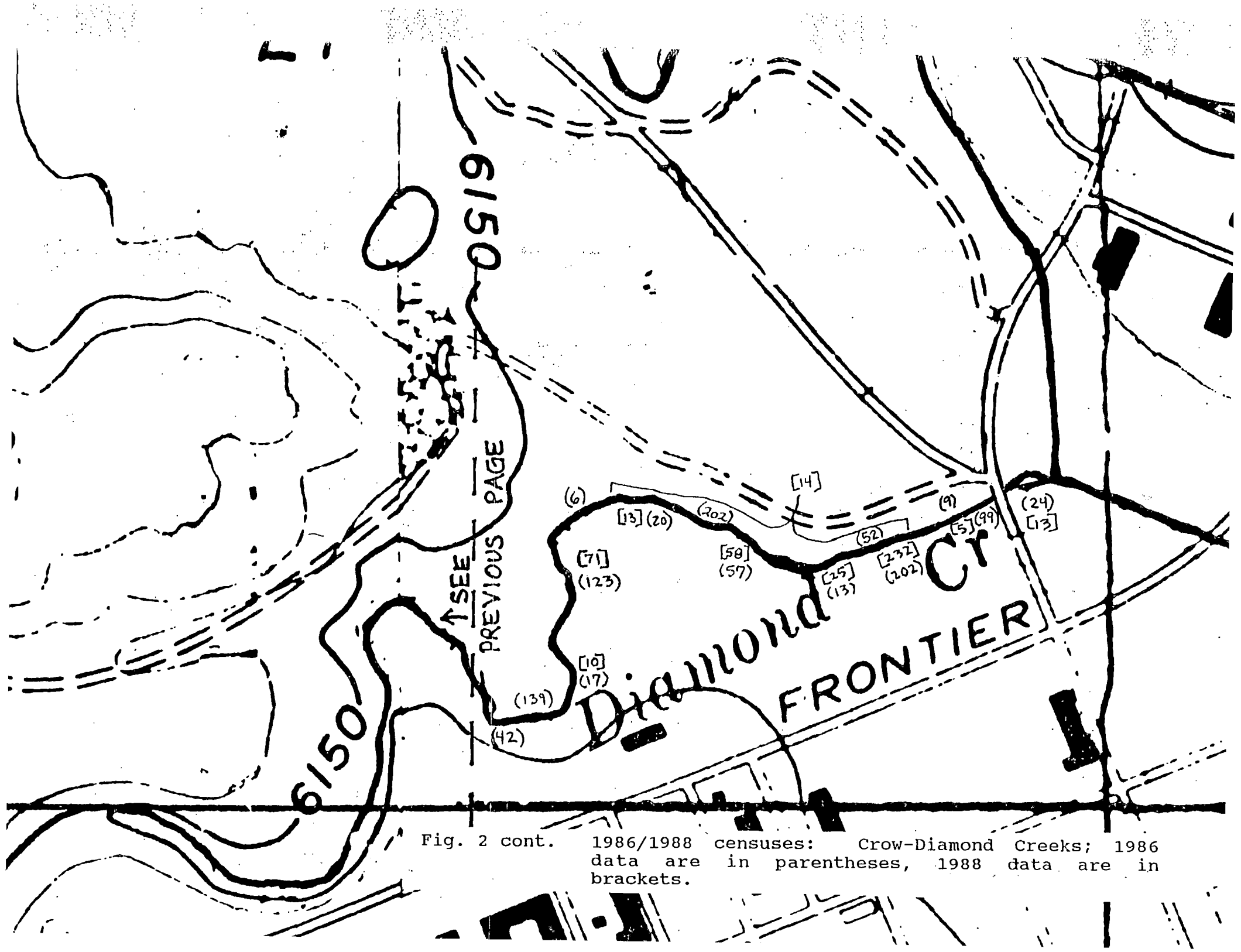


Fig. 2 cont. 1986/1988 censuses: Crow-Diamond Creeks; 1986 data are in parentheses, 1988 data are in brackets.

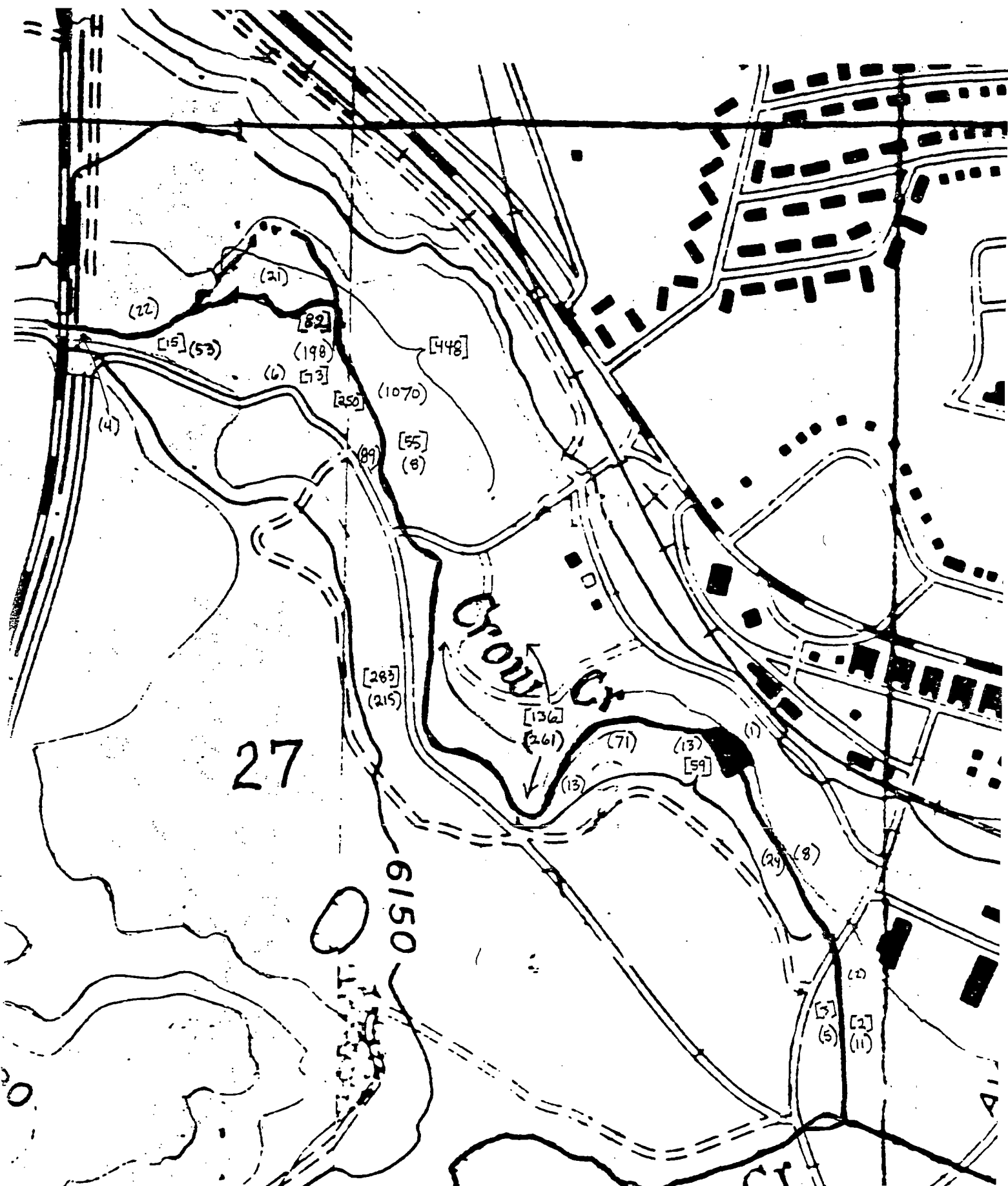


Fig. 2 cont. 1986/1988 censuses: Crow-Diamond Creeks; 1986 data are in parentheses, 1988 data are in brackets.

50/ Diamond FROM

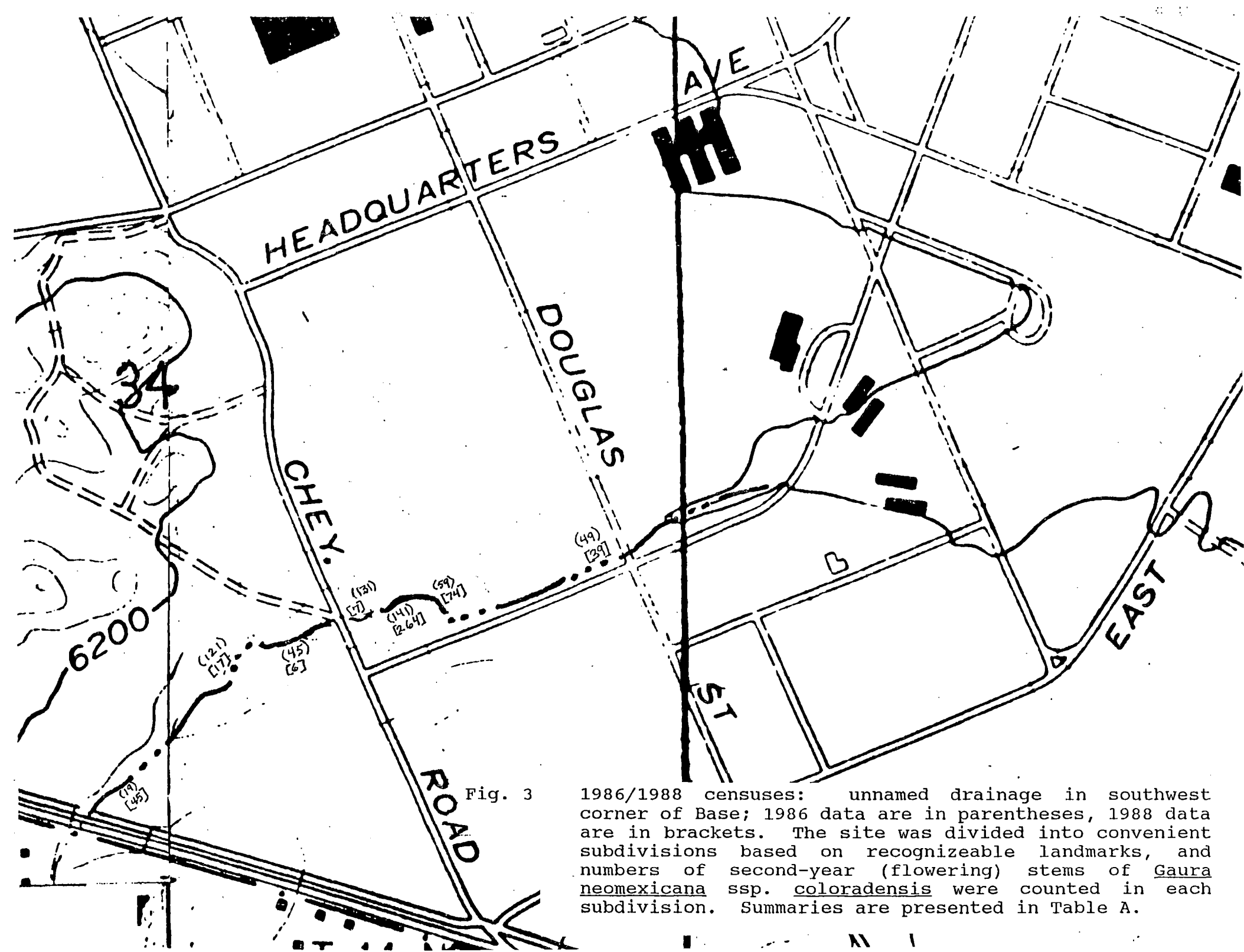


Fig. 3

1986/1988 censuses: unnamed drainage in southwest corner of Base; 1986 data are in parentheses, 1988 data are in brackets. The site was divided into convenient subdivisions based on recognizable landmarks, and numbers of second-year (flowering) stems of *Gaura neomexicana* ssp. *coloradensis* were counted in each subdivision. Summaries are presented in Table A.

Gaura neomexicana ssp. coloradensis census, F.E. Warren Air Force Base, 1989.

Site: Crow Creek  
 Date: 19, 20 August 1989  
 Surveyors: H. Marriott, D. Culver

Subd. No.	Flowering Stems	Rosettes	Comments
1	0	0	
2	0	0	
3	9	3	
4	29	85	Large, dense willow stands
5	0	0	
6	70	39	
7	59	222	
8	31	4	
9	168	88	
10	48	262	Willows, some bare gravelled ground
11	2	1	Many willows, thistles
12	194	263	Many willows, thistles
13	586	777	Many willows, thistles
14	423	289	Goldenrod, thistle, white sweetclover, willow, milkweed common
15	2	0	<u>Gaura parviflora</u> , willows, thistle, milkweed common
16	177	198	Many willows, thistles
17	6	7	Large patches of willow, thistle
18	48	15	Mown area
19	112	158	
20	78	71	Many willows, thistles along creek; butterfly plants concentrated at W end of pond
21	48	67	Field form ambiguous as to location (labelled "18")
22	56	34	
23	181	220	Much thistle, spurge; willows thick along creek
24	28	40	
25	9	7	Marshy with cattails; little butterfly plant habitat
26	0	0	
27	0	0	Steep bank with willows, thistle
28	12	6	
29	2	0	Many willows, thistles
30	27	14	
31	1	0	Very weedy with thistle, spurge
32	2	5	
TOTAL	2395	2875	

Gaura neomexicana ssp. coloradensis census, F.E. Warren Air Force Base, 1989.

Site: Diamond Creek  
Date: 22, 23 August 1989  
Surveyors: D. Culver, M. Neighbours

Subd. No.	Flowering Stems	Rosettes	Comments
1	207	499	
2	461	1531	
3	561	894	
4	432	2620	
5	23	16	
TOTAL	1684	5560	

Gaura neomexicana ssp. coloradensis census, F.E. Warren Air Force Base, 1989.

Site: Unnamed Drainage (SW corner of Base)  
Date: 23 August 1989  
Surveyors: D. Culver, M. Neighbours

Subd. No.	Flowering Stems	Rosettes	Comments
1	84	188	
2	650	1556	Very little Canada thistle
TOTAL	734	1744	