

APPENDIX A.

MAPS AND DESCRIPTIONS OF CENSUS SUBDIVISIONS (1989)

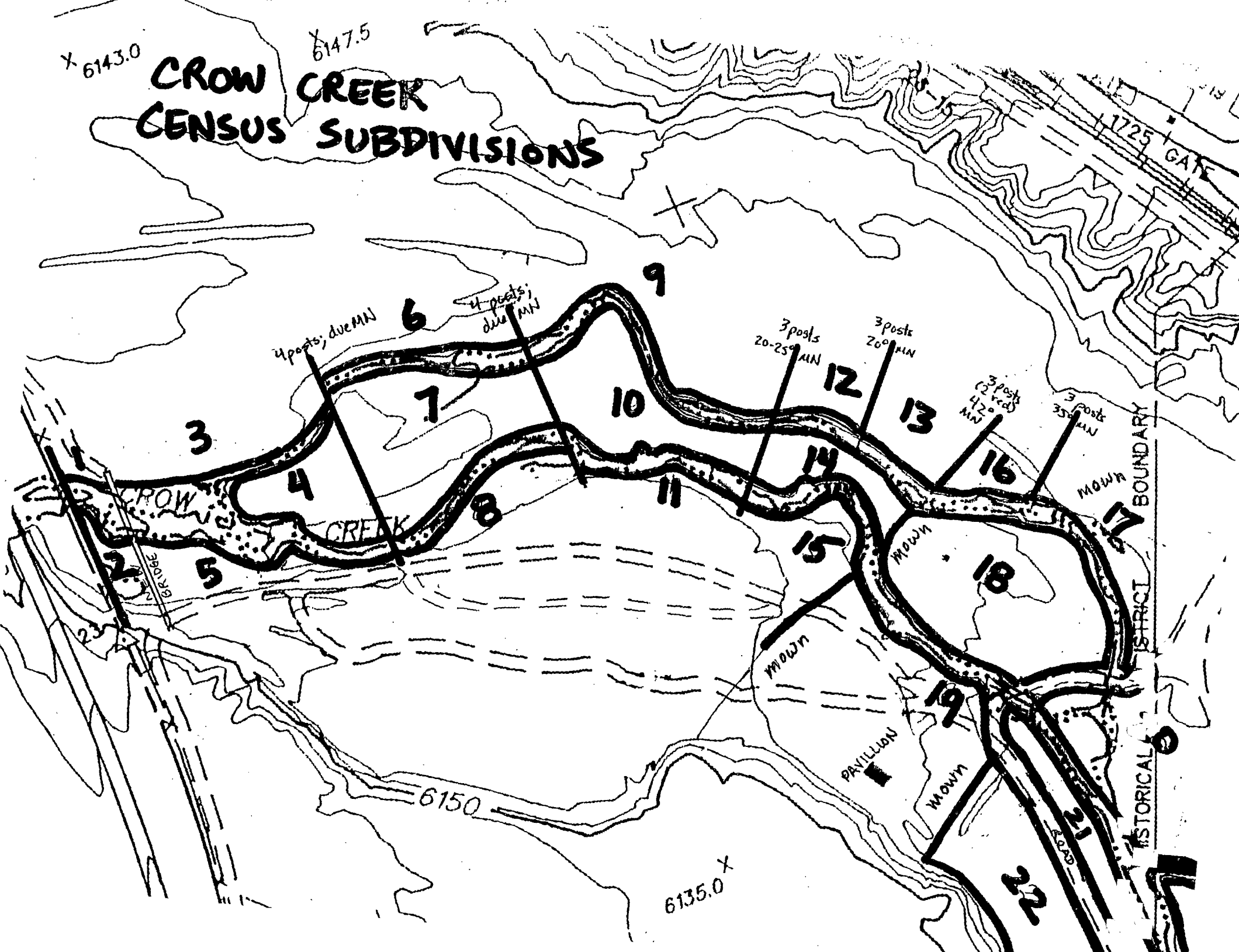
Gaura neomexicana ssp. coloradensis monitoring, Warren AFB; CROW CREEK census subdivisions established in 1989 (see maps). Note: fenceposts are metal and labeled with aluminum tags.

Subd. No.	Description
1	between bridge & Base boundary, N of creek
2	" " " S of creek
3	bridge to fenceposts, N of creek
4	between creeks from fork to fenceposts
5	bridge to fenceposts, S of creeks
6	between fenceposts, N of creeks
7	" " between creeks
8	" " S of creeks
9	" " N of creeks
10	" " between creeks
11	" " S of creeks
12	" " N of creeks
13	" " N of creeks
14	from fenceposts to mown park area, between creeks
15	from fenceposts to mown park area, S of creeks
16	between fenceposts N of creeks
17	from fenceposts to road, NE & E of creeks
18	mown park area between creeks downstream to road (between bridges)
19	mown park area, pavillion etc., W of creek
20	area downstream from road to pavillion, along E & N sides of drainages (including pond & ditches below, old road & drainage downstream from pond)
21	downstream from pavillion, W of creeks & E of road, to bend in road
22	downstream from pavillion starting at low ridge-like mound S of pavillion, W fo creeks & road, to bend in road; W to base of bluffs
23	downstream from pond, between main drainage & old road/ditch, to confluence of ditch & creek
24	downstream from bend in road to sharp bend E in creek; SW of creek & NE of road
25	N & E of drainages in area S of FamCamp & NW of upper end of reservoir
26	E of creek, from sharp bend downstream to uppermost end of arm of reservoir
27	NE of reservoir downstream to dam
28	S & SW of reservoir downstream to dam
29	E of creek, from & including dam, downstream to bridge
30	W of creek, from dam downstream to bridge
31	downstream from bridge to confluence with Diamond Creek, E of creek
32	" " " " W of creek

X 6143.0

X 6147.5

CROW CREEK CENSUS SUBDIVISIONS



4 posts; due MN

4 posts; due MN

3 posts 20-25° MN

3 posts 20° MN

3 posts 47° MN

3 posts 35° MN

CROW CREEK

HISTORICAL DISTRICT BOUNDARY

PAVILLION

ROAD

6150

X 6135.0

1725 GATE

2

3

4

5

6

7

8

9

10

11

12

15

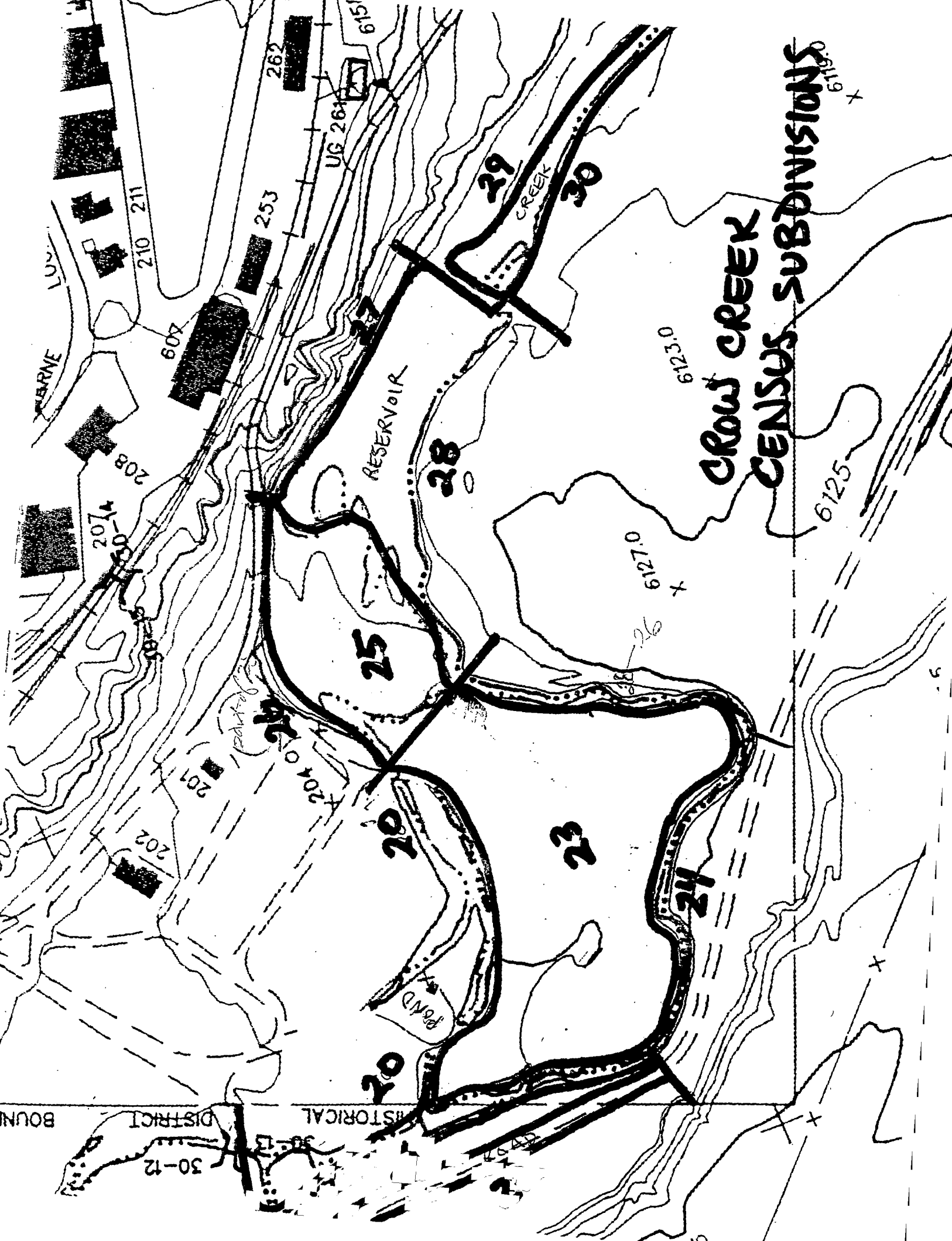
13

18

19

16

22



**CROW CREEK
CENSUS SUBDIVISIONS**

RESERVOIR

MARNE
LUN

210 211

253

269

615

UG 2615

609

208

207

202

201

204

25

28

29

30

CREEK

9127.9

9123.0

6125

HISTORICAL DISTRICT

30-12

HISTORICAL

24

23

20

20

POND

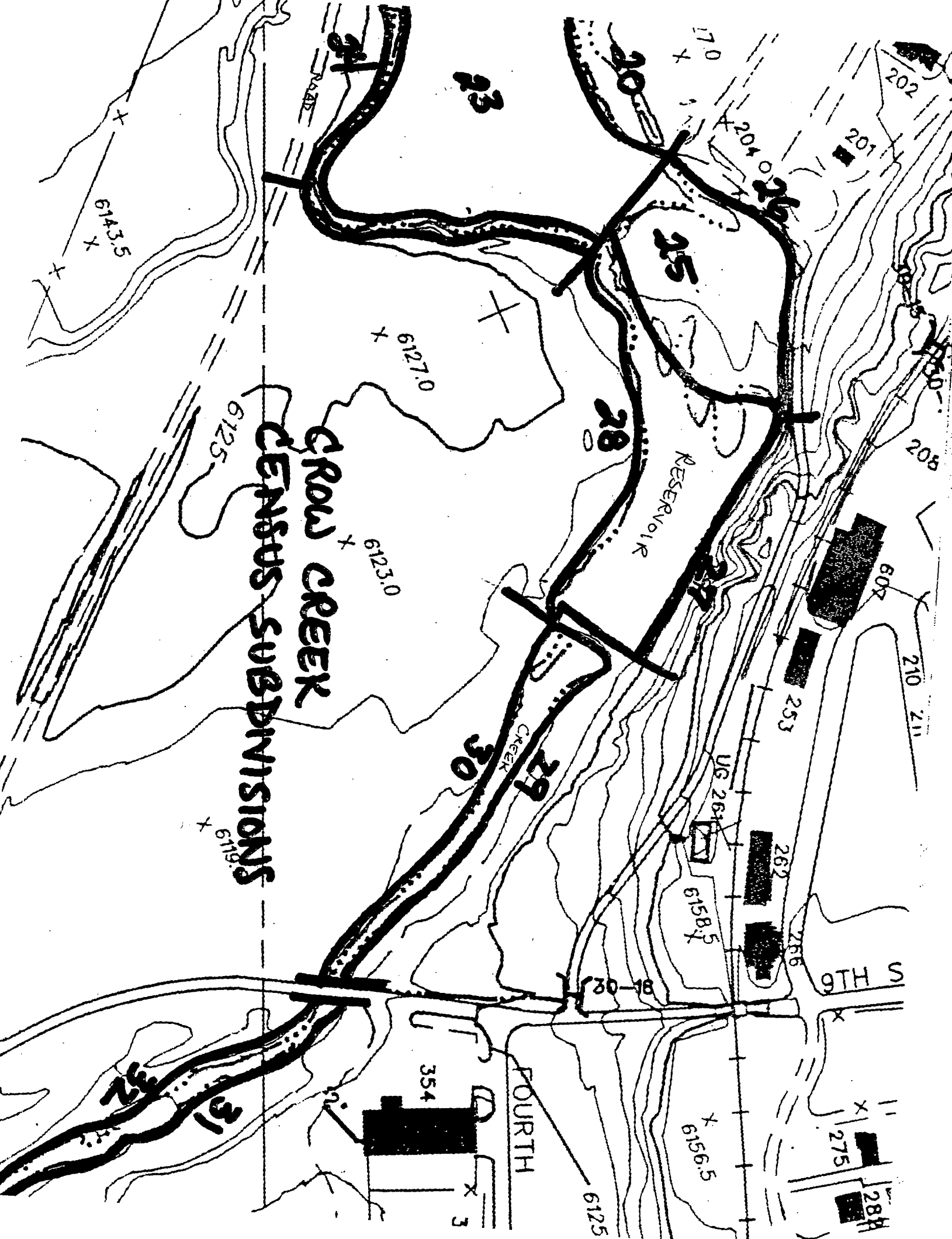
+

+

+

+

5



**CROW CREEK
CENSUS SUBDIVISIONS**

RESERVOIR

CROW CREEK

9TH S

FOURTH

13

15

28

29

30

31

32

6143.5

6127.0

6123.0

6158.5

6156.5

6125

354

253

262

266

275

288

607

210 211

208

201

202

170

204

ROAD

3

Gaura neomexicana ssp. coloradensis monitoring, Warren AFB; **DIAMOND CREEK** census subdivisions established in 1989 (see map). Note: subdivisions include drainage bottom on both sides of creek.

Subd.

No. Description

- 1 Base boundary E (downstream) to second meander (E subdivision boundary bisects meander)
- 2 second meander E to extension N of South Dakota Avenue
- 3 South Dakota Avenue E to drainage outlet on bluff S of creek (E subdivision boundary bisects meander)
- 4 drainage outlet E to bridge
- 5 bridge E to confluence with Diamond Creek

Gaura neomexicana ssp. coloradensis monitoring, Warren AFB; **UNNAMED DRAINAGE** census subdivisions established in 1989 (see map). Note: subdivisions include drainage bottom on both sides of creek.

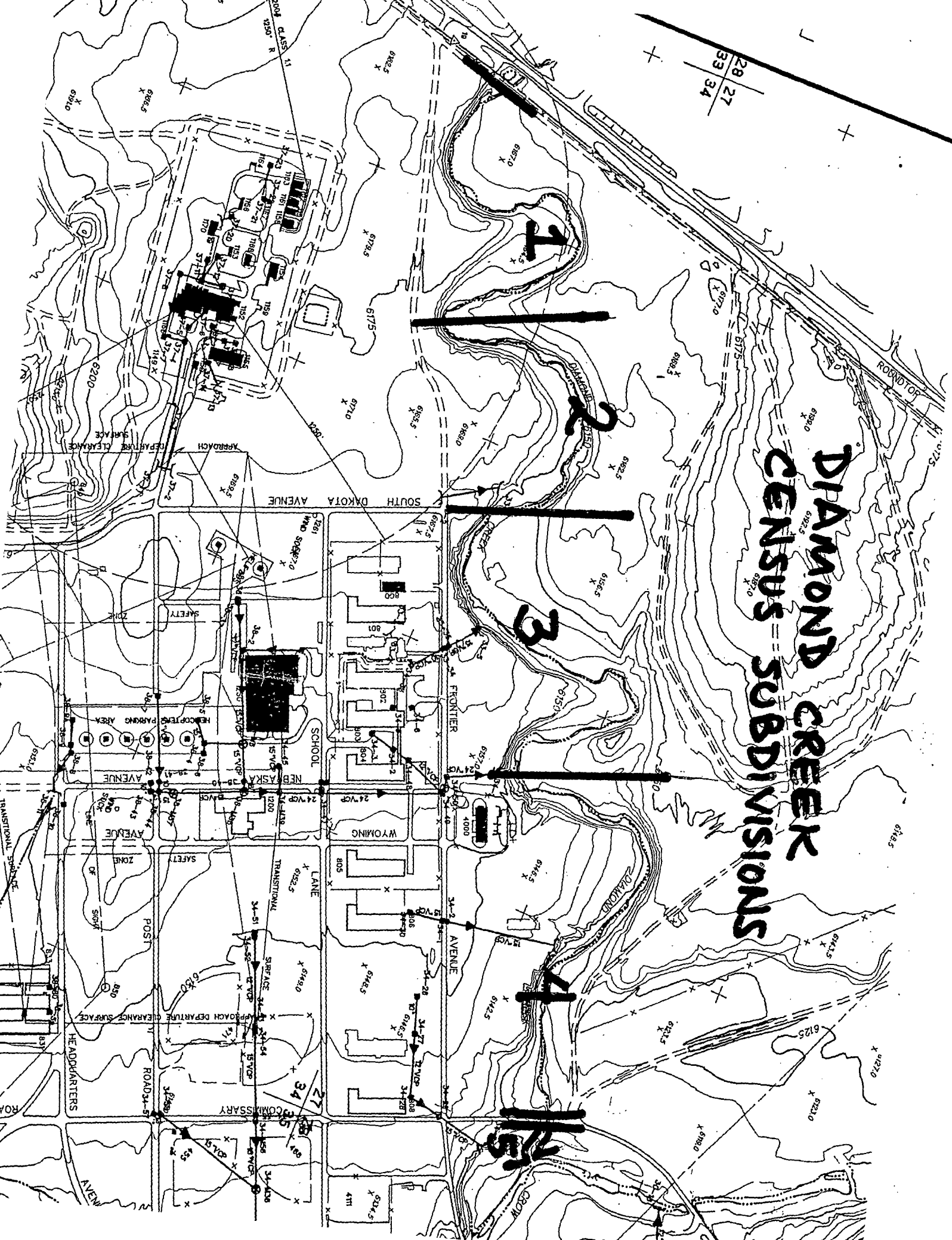
Subd.

No. Description

- 1 Base boundary NE (downstream) to Cheyenne Road
- 2 Cheyenne Road ENE (downstream) to Douglas Street

28 27
33 34

DIAMOND CREEK CENSUS SUBDIVISIONS



1

2

3

4

UNNAMED DRAINAGE CENSUS SUBDIVISIONS

