

**A novel immunostimulator,  $N^2$ -[ $\alpha$ -O-benzyl- $N$ -(acetylmuramyl)-L-alanyl-D-isoglutaminyl]- $N^6$ -*trans*-(*m*-nitrocinnamoyl)-L-lysine (MDP-C), and its adjuvancy on the hepatitis B surface antigen**

*Hong-Zhen Yang<sup>†, #</sup>, Song Xu<sup>†, #</sup>, Xue-Yan Liao<sup>‡</sup>, Suo-De Zhang<sup>†</sup>, Zheng-Lun Liang<sup>‡</sup>, Bai-He Liu<sup>†</sup>, Jin-Ye Bai<sup>†</sup>, Chao Jiang<sup>¶</sup>, Jian Ding<sup>¶</sup>, Gui-Fang Cheng<sup>\* †</sup>, Gang Liu<sup>\* †</sup>*

<sup>†</sup>Chinese Academy of Medical Sciences and Peking Union Medical College, Institute of Materia Medica, 1 Xian Nong Tan Street, Beijing 100050, P. R. China

<sup>‡</sup>National Institute for the Control of Pharmaceutical and Biological Products, 2 Tiantanxili, 100050, P. R. China

<sup>¶</sup>Shanghai Institute of Materia Medica, Shanghai Institutes for Biological Sciences, Chinese Academy of Sciences, 555 Zu Chong-zhi Road, Shanghai 201203, P. R. China

\* Corresponding authors. Phone: +86-01-63167165 or 63165192; Fax: +86-01-63167165. Email address: [chenggf@imm.ac.cn](mailto:chenggf@imm.ac.cn) or [gliugang27@yahoo.com](mailto:gliugang27@yahoo.com)

<sup>#</sup>Contributed equally to this work.

**Table of Contents**

Cytotoxic effects of MDP-C on BMDCs, macrophages and P815 tumor cells: S2

Body temperature of tested rabbits: S2

Characterization of MDP-C by <sup>1</sup>H-NMR, <sup>13</sup>C-NMR, IR and HRFAB MS: S3-S6

## Supporting Information

Table 1. Cytotoxic effects of  $1.0 \times 10^{-5}$  mol/L MDP-C on BMDCs, macrophages and P815 tumor cells.

	BMDCs	Macrophages	P815 cells
OD <sub>570</sub> of control (Mean $\pm$ SD)	1.42 $\pm$ 0.01	1.74 $\pm$ 0.02	1.16 $\pm$ 0.06
OD <sub>570</sub> of MDP-C (Mean $\pm$ SD)	1.47 $\pm$ 0.05	1.82 $\pm$ 0.02	1.10 $\pm$ 0.05
Inhibiting Rate (%)	-3.7	-4.5	5.06

$P > 0.05$  vs. Control group.

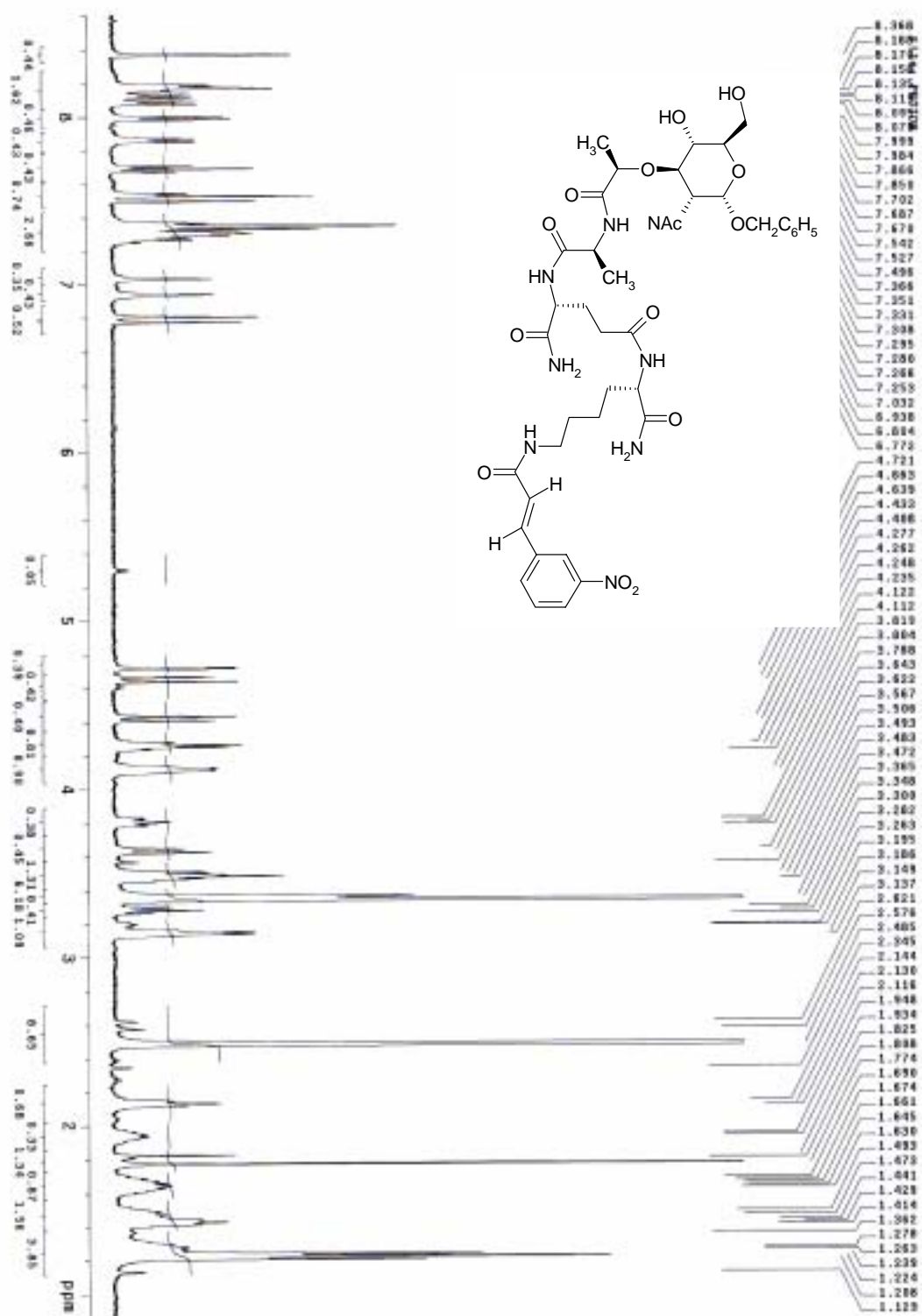
Table 2 Body temperature of tested rabbits

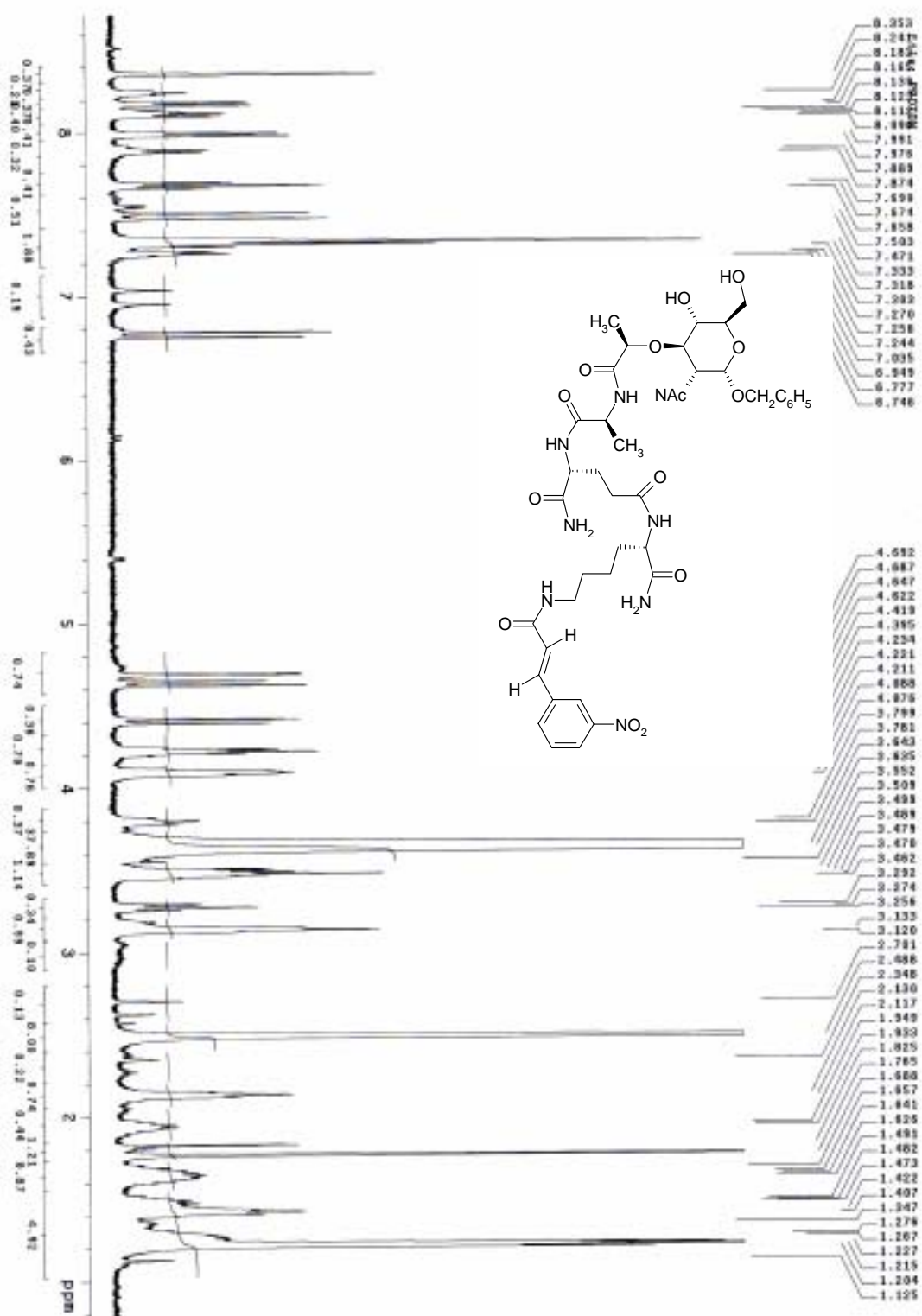
Time after MDP-C administration (h)	Rectal temperature (°C) (Mean $\pm$ SD)	
	0.1 mg/kg	0.2 mg/kg
0	39.80 $\pm$ 0.23	39.93 $\pm$ 0.24
1	39.65 $\pm$ 0.36	40.20 $\pm$ 0.97
2	39.62 $\pm$ 0.26	39.88 $\pm$ 0.41
3	39.92 $\pm$ 0.28	39.92 $\pm$ 0.52
4	39.93 $\pm$ 0.26	39.88 $\pm$ 0.34
24	39.57 $\pm$ 0.33	39.62 $\pm$ 0.31

$P > 0.05$ , temperature at different time vs temperature before MDP-C administration;

n=6

Characterization of MDP-C by  $^1\text{H}$ -NMR,  $^{13}\text{C}$ -NMR, IR and HRFAB MS: S3-S6





INOVA-500 DEPT-135 NS-MQ-C 300 MHz D<sub>2</sub>O  
 Sample directory:  
 File: 040608  
 Pulse Sequence: DEPT

