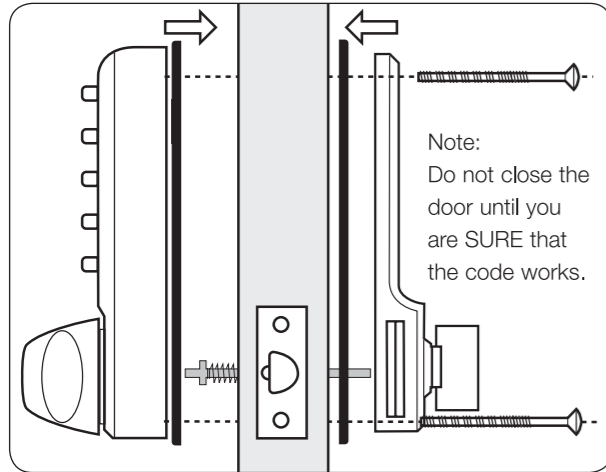


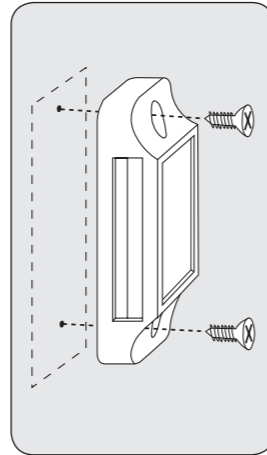
3. FIXING THE LOCK



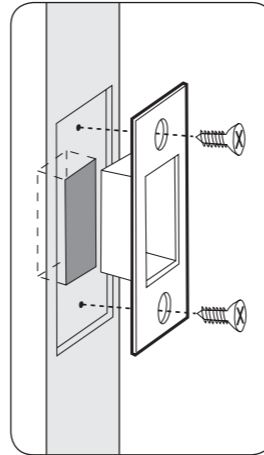
- Cut the fixing bolts to suit the door thickness, length of bolts measured beneath the bolt head should be door thickness **plus** 15mm (5/8").
- Using the inside knob check that the spindle moves freely, and that the latch retracts and projects smoothly. If it is tight, loosen the fixing bolts slightly and adjust the position of the back plate until the spindle will turn freely. Tighten the fixing bolts. Test the spindle again. **DO NOT** over-tighten the bolts as this may cause the door to distort and affect the lock function.

DO NOT CLOSE THE DOOR UNTIL YOU ARE SURE THAT THE CODE WORKS

4. FITTING THE KEEPER



Surface Keeper
fig. 5.1



Mortice Keeper
fig. 5.2

- First select the appropriate keeper for your frame.
- Position the keeper on the frame so that it lines up with the deadbolt and mark the appropriate holes.
- If you are using the Surface Keeper simply screw into place (see fig. 5.1). Use the packing pieces as required.
- The Mortice Keeper will require cutting a small recess (see fig. 5.2).

CODELOCKS
control + convenience

INSTALLATION INSTRUCTIONS

CODELOCK
2000
ELECTRONIC

Surface Deadbolt

Helpline, service & spares
FREEPHONE 0800 393 405

CODELOCKS LTD. UK
Tel 01635 239645
Fax 01635 239644
sales@codelocks.co.uk
www.codelocks.com

CODELOCKS INC. USA
Tel +1 714 979 2900
Fax +1 714 979 2902
sales@codelocks.us

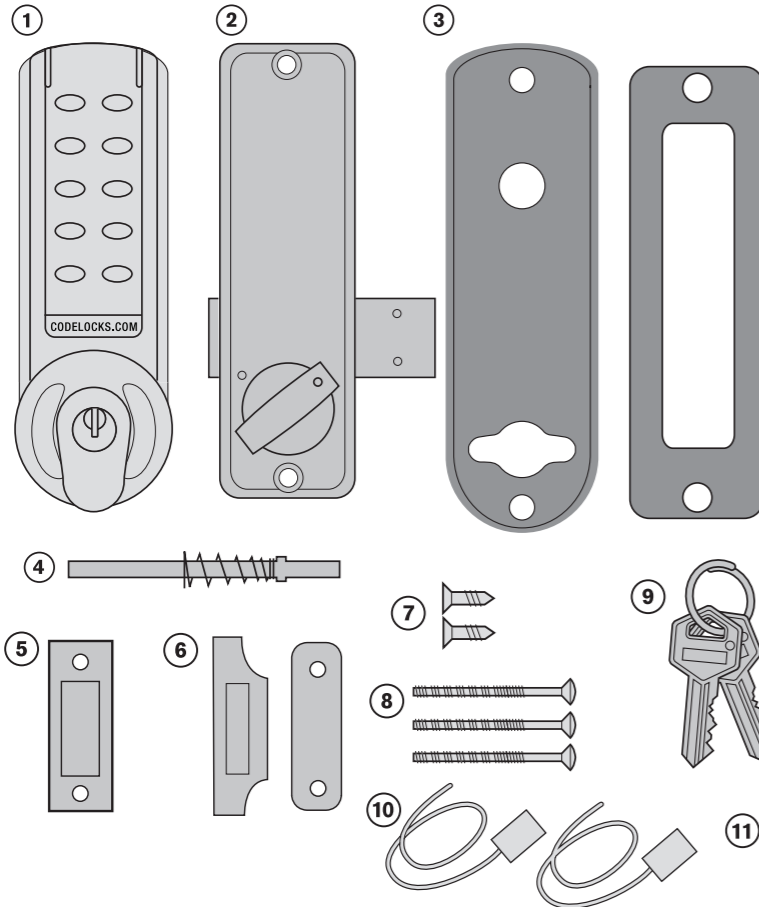


Surface Deadbolt

CONTENTS

SPECIAL NOTES

2. POSITIONING THE LOCK



1. Front plate
2. Back plate
3. Neoprene seals x 2
4. Spring loaded spindle
5. Mortice keeper
6. Surface keeper and packing pieces
7. Wood screws x 2 (to use with keeper)
8. Fixing bolts 3 supplied (spare x1)
9. 2 keys
10. Cable Connections for REM1 and REM2
11. 1.5v AA Batteries (x2)

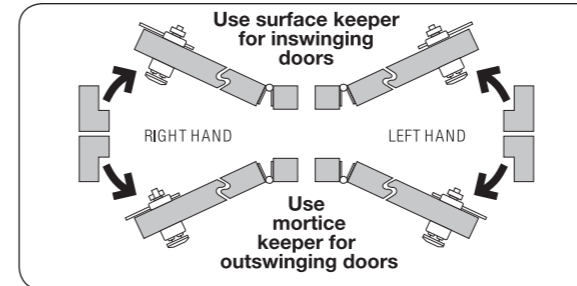
Tools required for installation

Power drill
25mm, 13mm & 8mm drill bits
(1") (1/2") (5/16")
Bradawl
Philips screwdriver size 2
Chisel - maximum 25mm (1")
Hammer/Mallet
Stanley knife
Adhesive tape
Pencil
Tape measure

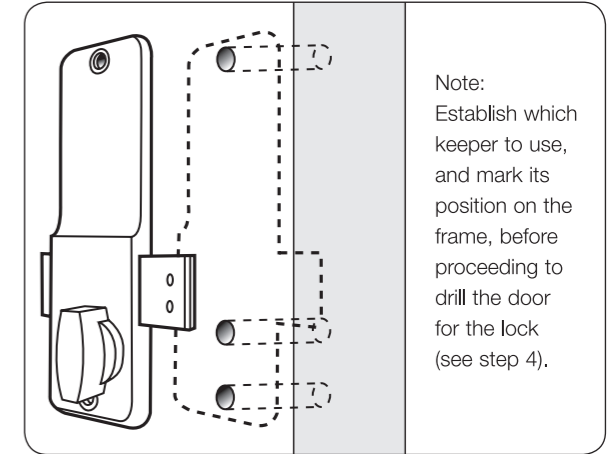
You are advised to familiarise yourself with the instructions before starting work.

- Install the 2 x AA cells supplied into front plate.
- A BLEEP should be heard when you do this.
If no BLEEP is heard then check that the batteries are correctly installed.
- Enter the factory Master Code, 1234 (**note; when programming the badge bar CODELOCKS.COM must prefix the Master Code**).
The blue light will flash and the front knob will be able to be Turned using finger and thumb.
- **After installation change factory set Master and User Codes – see programming instructions provided.**

1. CHECK THE HAND OF YOUR DOOR



- Your door is right-handed if, viewed from outside, the hinges are on the right.



Note:
Establish which keeper to use, and mark its position on the frame, before proceeding to drill the door for the lock (see step 4).

- Remove the inside cover plate from the back plate, and install the deadbolt according to the hand of your door. Note that the standard bolt projects 40mm (1 9/16") to the locking side. A shorter bolt which projects 20mm (3/4") is available.
- Set the back plate with the knob in the vertical position and hold it to the door with one end of the bolt against the frame where the keeper will be fitted (see step 4).
- Mark the position of the top fixing hole, and then using one of the packing pieces as a template mark the position of the lower fixing hole and the hole for the spindle.
Drill 8mm (5/16") holes for fixing bolts and 13mm (1/2") hole for spindle.