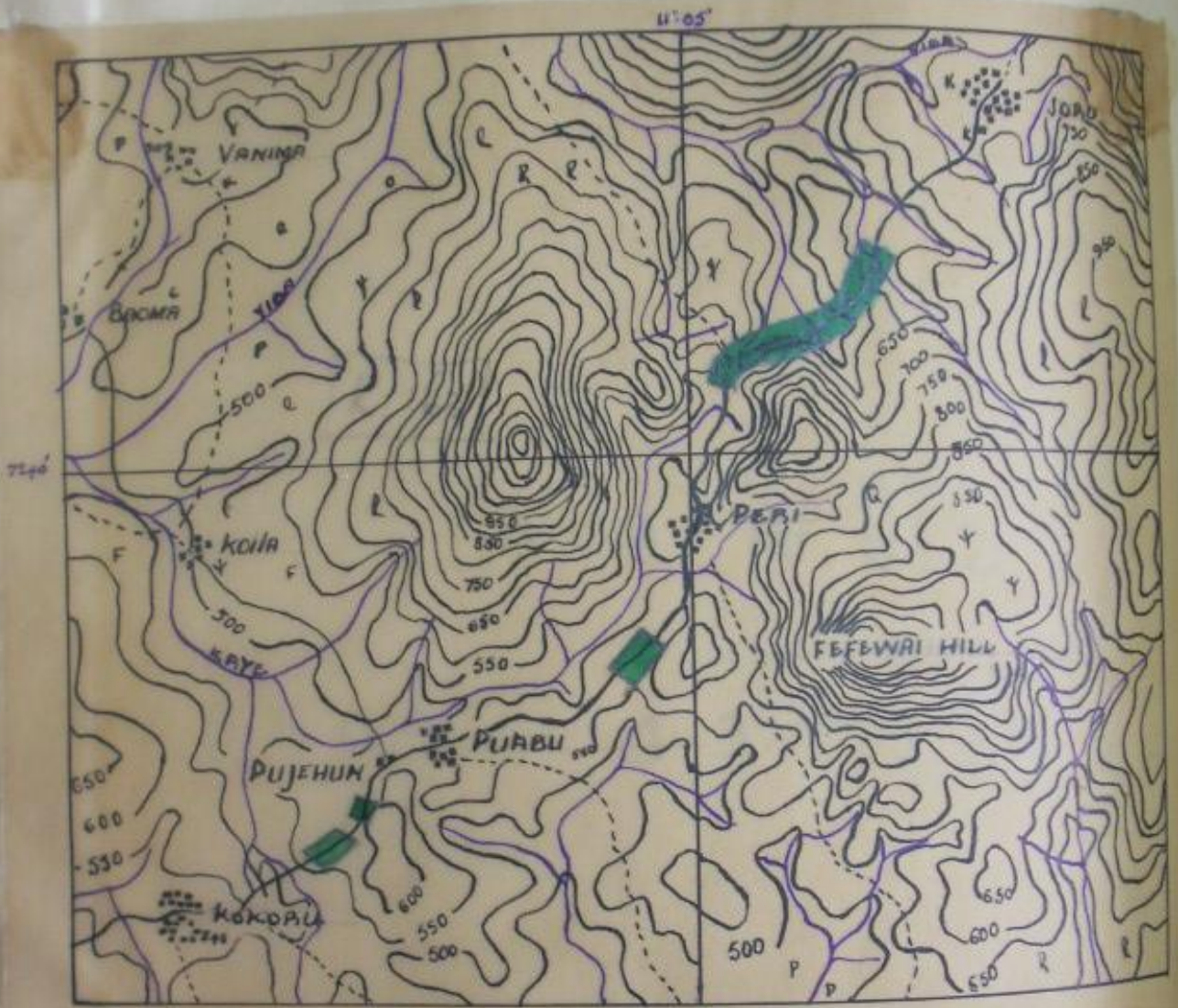


G ^A~~U~~ ^U~~A~~ R A

PROTECTED FOREST

No. 2



TRACED FROM TOPO SHEET 99.

SCALE = 1:62,500.

K163

PUBLIC NOTICE NO. 21 OF 1953

M.P. 5180/91

Published 26th March, 1953

THE FORESTRY ORDINANCE
(Cap. 86)

**THE FORESTRY (GAURA PROTECTED FOREST NO. 2)
ORDER IN COUNCIL, 1953**

In exercise of the powers conferred upon the Governor in Council by section 14 of the Forestry Ordinance, the following Order is hereby made at the request of the Tribal Authority of the Gaura Chiefdom, Kenema District, South-eastern Province:—

1. This Order may be cited as the Forestry (Gaura Protected Forest No. 2) Order in Council, 1953.
2. The lands described in the Schedule to this Order are hereby constituted a Protected Forest within the meaning of the Forestry Ordinance.

SCHEDULE

ALL THAT LAND, comprising 155 acres or thereabouts, in the Gaura Chiefdom in the Kenema District of the South-eastern Province of the Protectorate of Sierra Leone, bounded by a cleared trace and lying within 5 chains on either side of the centre of the Giema-Zimmi Motor Road, starting from a point distant about 44.6 chains from milestone 18 measured towards milestone 19, and ending at points distant about 47.8 chains and about 50.4 chains from milestone 23 measured towards milestone 24 on the north and south sides of the motor road respectively, provided that the following areas shall be excluded from the Protected Forest:—

- (1) that area, which includes a cacao plantation and which lies on the south side of the motor road, between points distance about 40.4 chains and about 54.2 chains from milestone 19 measured towards milestone 20.
- (2) That area, which includes Peri Village, between points distant about 74.3 chains from milestone 19 measured towards milestone 20 and about 29.0 chains from milestone 21 measured towards milestone 22.
- (3) That area, which includes Buabu Village, and which lies, on the southern side of the motor road between points distant about 58.0 chains from milepost 21 measured towards milepost 22, and 17.0 chains from milepost 23 measured towards milepost 24, and on the northern side of the motor road between points