

S A L E I

H I L L S

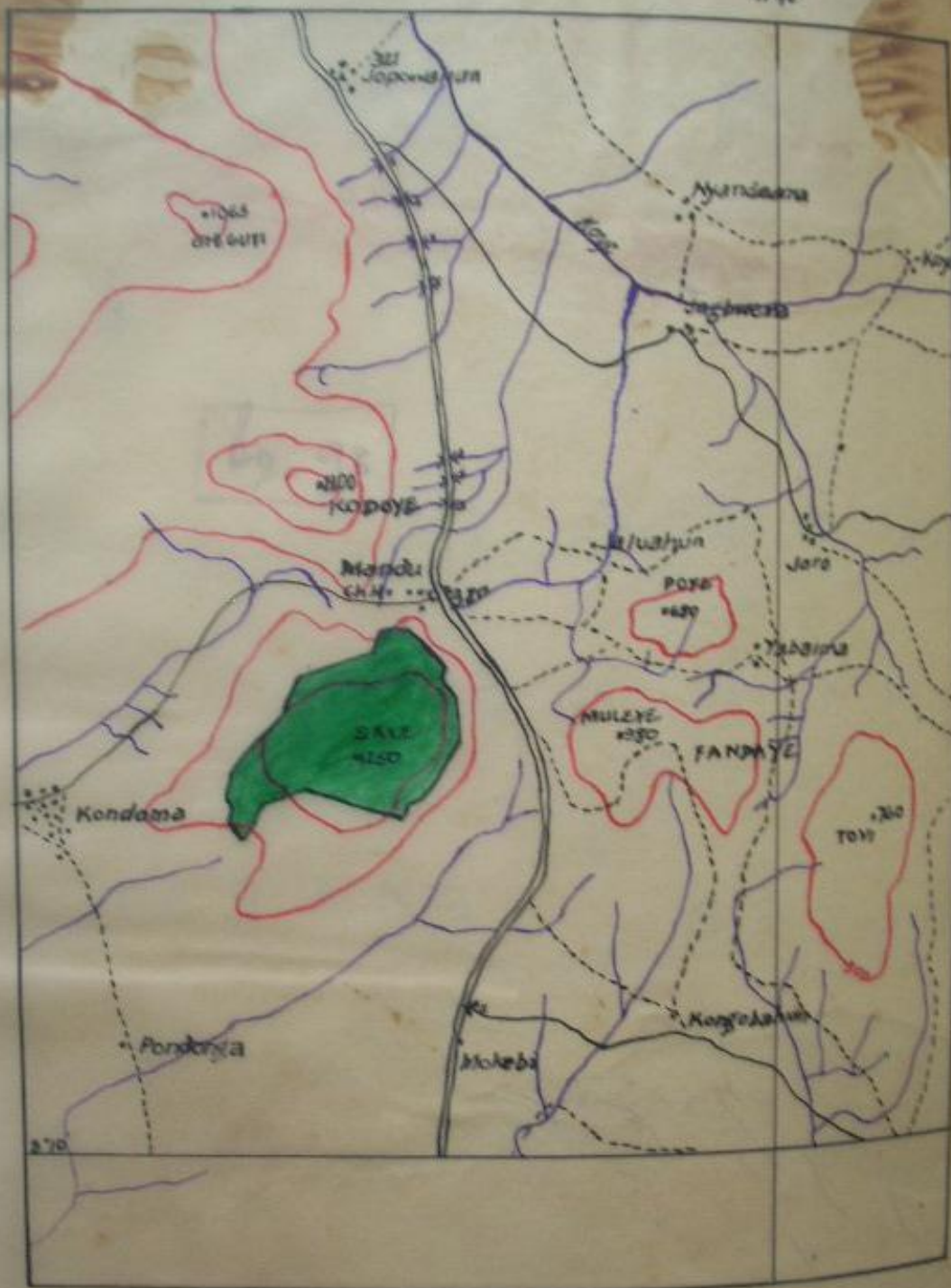
PROTECTED

FOREST

VALUNIA

CHIEFDOM

(previously VANJELU)



Traced from S.L.S topo sheet 76

Traced by
M. A. ALQHALI

Scale 1:50,000

P.N.
88-19

Distance on a
31
34
41
47
54

Land within
compound shall b

P.N. 89/1947

SALEI HILL.

F.N.
89 of 1947.

1. This Order may be cited as the Salei Hill Protected Forest Order.

2. The lands described in the Schedule to this Order are hereby constituted a protected forest within the meaning of the Forestry Ordinance.

SCHEDULE.

All that area of land in the Vanjelu Chiefdom in the Bo District enclosed within the following boundaries—

Starting at a point, boundary stone No. 1, on the road from Mandu Town to Mandu rest house, at a distance of 928 feet from the Vanjelu Court Barri; thence on a magnetic bearing of—

Bearing	Distance	Point	Distance	Point	Distance
89°	to boundary stone No. 2	distant approximately	220 feet		
123 1/2°	"	3	"	620	"
147°	"	4	"	1,073	"
173°	"	5	"	370	"
231°	"	6	"	184	"
165 1/2°	"	7	"	750	"
195°	"	8	"	670	"
221 1/2°	"	9	"	1,762	"
267°	"	10	"	439	"
230°	"	11	"	250	"
207°	"	12	"	2,570	"
10°	"	13	"	1,038	"
	"	14	"	450	"
	"	15	"	465	"
	"	16	"	460	"
	"	17	"	410	"
	"	18	"	370	"

thence on a magnetic bearing of—

Bearing	Distance	Point	Distance	Point	Distance
31 1/2°	to boundary stone No. 19	distant approximately	593 feet		
34°	"	20	"	1,450	"
41°	"	21	"	201	"
	"	22	"	100	"
204°	"	23	"	1,310	"
207°	"	24	"	1,920	"
204°	"	1	"	510	"

where 1 is the starting point.

Land within these areas occupied by the existing Mandu rest house and compound shall be excluded.