

D O D O
H I L L S

F O R E S T R E S E R V E

N.I.B.

This copy has been
signed by the Governor!



gp
11/6

GOVERNOR'S ORDER.

WHEREAS an enquiry was held at Panguma on the 18th and 19th days of July, 1921, in pursuance of the Forestry Ordinance, No. 8 of 1912, by the Reserve Settlement Commissioner with the assistance of Chief Ansumana of the Symbaru Chiefdom and Chief Biriwa of the Faiama Chiefdom ;

AND WHEREAS by his judgment dated the 16th September, 1921, the Reserve Settlement Commissioner determined the limits of certain lands situate in the Upper Bambarra and Dodo Chiefdoms in the Konneh District of the Sierra Leone Protectorate specified in the schedule hereto which it was proposed to constitute a Forest Reserve ;

NOW, THEREFORE, I hereby order as follows :—

1. This Order may be cited as the Forest Reserve Short title (Dodo Hills) Order, 1921.

2. The lands specified in the schedule hereto shall be constituted a Forest Reserve. Constitution
of reserve

3. The natives of the Upper Bambarra and Dodo Chiefdoms shall be entitled at all times to enter upon so much of the lands of the Forest Reserve as are in their respective Chiefdoms without fee, let or hindrance, for the purposes of picking the fruits of the *Cola acuminata* (kola) *Elaeis guineensis* (oil palm), *Musa paradisiaca* (plantain), *Musa sapientum* (banana), tapping the trees of the species *Raphia vinifera* (bamboo palm) and the taking of palma wine from them, taking of poles and lianas required for their own use in erecting houses and other buildings, hunting and killing any wild animals, taking fish, and taking of such whet-stones for sharpening tools as they may require for their own use. Rights
reserved

SCHEDULE.

Starting at boundary stone No. 1, which is situated on the north side of the Gerihun-Bonabu road between the villages of Bongeï and Pewubu and 900 yards from Bongeï in the Bambara Chieftdom in the Konnoh District in the Central Province, thence on a magnetic bearing of 260 degrees to boundary stone No. 2, distant 347 yards: thence on a magnetic bearing of 179 degrees to boundary stone No. 3, distant 127 yards: thence on a magnetic bearing of 160 degrees to boundary stone No. 4, distant 178 yards: thence on a magnetic bearing of 114 degrees to boundary stone No. 5, distant 613 yards: thence on a magnetic bearing of 165 degrees to boundary stone No. 6, distant 142 yards: thence on a magnetic bearing of 195 degrees to boundary stone No. 7, distant 167 yards: thence on a magnetic bearing of 165 degrees to boundary stone No. 8, distant 690 yards: thence on a magnetic bearing of 187 degrees to boundary stone No. 9, distant 904 yards: thence on a magnetic bearing of 257 degrees to boundary stone No. 10, distant 228 yards: thence on a magnetic bearing of 170 degrees to boundary stone No. 11, distant 1,613 yards: thence on a magnetic bearing of 110 degrees to boundary stone No. 12, distant 267 yards: thence on a magnetic bearing of 180 degrees to boundary stone No. 13, distant 357 yards: thence on a magnetic bearing of 251 degrees to boundary stone No. 14, distant 56 yards: thence on a magnetic bearing of 202 degrees to boundary stone No. 15, distant 131 yards: thence on a magnetic bearing of 179 degrees to boundary stone No. 16, distant 492 yards: thence on a magnetic bearing of 190 degrees to boundary stone No. 17, distant 77 yards: thence on a magnetic bearing of 173 degrees to boundary stone No. 18, distant 483 yards: thence on a magnetic bearing of 150 degrees to boundary stone No. 19, distant 364 yards: thence on a magnetic bearing of 187 degrees to boundary stone No. 20, distant 194 yards: thence on a magnetic bearing of 140 degrees to boundary stone No. 21, distant 47 yards: thence on a magnetic bearing of 200 degrees to boundary stone No. 22, distant 80 yards: thence on a magnetic bearing of 187 degrees to boundary stone No. 23, distant 30 yards: thence on a magnetic bearing of 217 degrees to boundary stone No. 24, distant 47 yards: thence on a magnetic bearing of 234.30 degrees to boundary stone No. 25, distant 92 yards: thence on a magnetic bearing of 215 degrees to boundary stone No. 26, distant 642 yards: thence on a

magnetic bearing of 175 degrees to boundary stone No. 27, distant 137 yards: thence on a magnetic bearing of 260 degrees to boundary stone No. 28, distant 255 yards: thence on a magnetic bearing of 220 degrees to boundary stone No. 29, distant 177 yards: thence on a magnetic bearing of 304 degrees to boundary stone No. 30, distant 334 yards: thence on a magnetic bearing of 315.45 degrees to boundary stone No. 31, distant 133 yards: thence on a magnetic bearing of 243.30 degrees to boundary stone No. 32, distant 1,167 yards: thence on a magnetic bearing of 324.15 degrees to boundary stone No. 33, distant 340 yards: thence on a magnetic bearing of 306 degrees to boundary stone No. 34, distant 400 yards: thence on a magnetic bearing of 280 degrees to boundary stone No. 35, distant 1,550 yards: thence on a magnetic bearing of 300 degrees to boundary stone No. 36, distant 1,666 yards: thence on a magnetic bearing of 265 degrees to boundary stone No. 37, distant 200 yards.

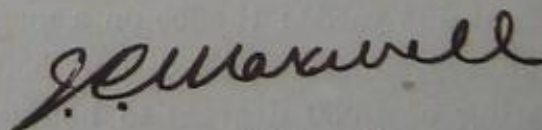
Thence south-west along the left bank of the Bendeia River to boundary stone No. 38, distant 1,000 yards: thence on a magnetic bearing of 305 degrees to boundary stone No. 39, distant 760 yards: thence on a magnetic bearing of 350 degrees to boundary stone No. 40, distant 454 yards: thence on a magnetic bearing of 55 degrees to boundary stone No. 41, distant 380 yards: thence on a magnetic bearing of 330 degrees to boundary stone No. 42, distant 434 yards: thence on a magnetic bearing of 40 degrees to boundary stone No. 43, distant 550 yards: thence on a magnetic bearing of 13.30 degrees to boundary stone No. 44, distant 314 yards: thence on a magnetic bearing of 99 degrees to boundary stone No. 45, distant 234 yards: thence on a magnetic bearing of 26.30 degrees to boundary stone No. 46, distant 214 yards: thence on a magnetic bearing of 34 degrees to boundary stone No. 47, distant 110 yards: thence on a magnetic bearing of 15 degrees to boundary stone No. 48, distant 302 yards: thence on a magnetic bearing of 24 degrees to boundary stone No. 49, distant 169 yards: thence on a magnetic bearing of 90 degrees to boundary stone No. 50, distant 303 yards: thence on a magnetic bearing of 35 degrees to boundary stone No. 51, distant 212 yards: thence on a magnetic bearing of 10 degrees to boundary stone No. 52, distant 118 yards: thence on a magnetic bearing of 65 degrees to boundary stone No. 53, distant 697 yards: thence on a magnetic bearing of 25 degrees to boundary stone No. 54, distant 327 yards:

thence on a magnetic bearing of 65 degrees to boundary stone No. 55, distant 1,780 yards : thence on a magnetic bearing of 300 degrees to boundary stone No. 56, distant 1,280 yards : thence on a magnetic bearing of 40 degrees to boundary stone No. 57, distant 803 yards : thence on a magnetic bearing of 72 degrees to boundary stone No. 58, distant 578 yards : thence on a magnetic bearing of 20 degrees to boundary stone No. 59, distant 363 yards : thence on a magnetic bearing of 360 degrees to boundary stone No. 60, distant 576 yards.

Thence north-east along the Baoma-Pewubu road to boundary stone No. 61, distant 1,333 yards : thence on a magnetic bearing of 161°30' degrees to boundary stone No. 62, distant 448 yards : thence on a magnetic bearing of 84 degrees to boundary stone No. 63, distant 462 yards : thence on a magnetic bearing of 124°30' degrees to boundary stone No. 64, distant 404 yards : thence on a magnetic bearing of 11°30' degrees to boundary stone No. 65, distant 179 yards.

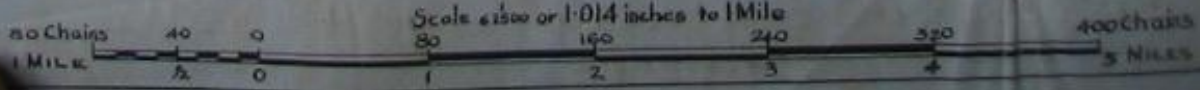
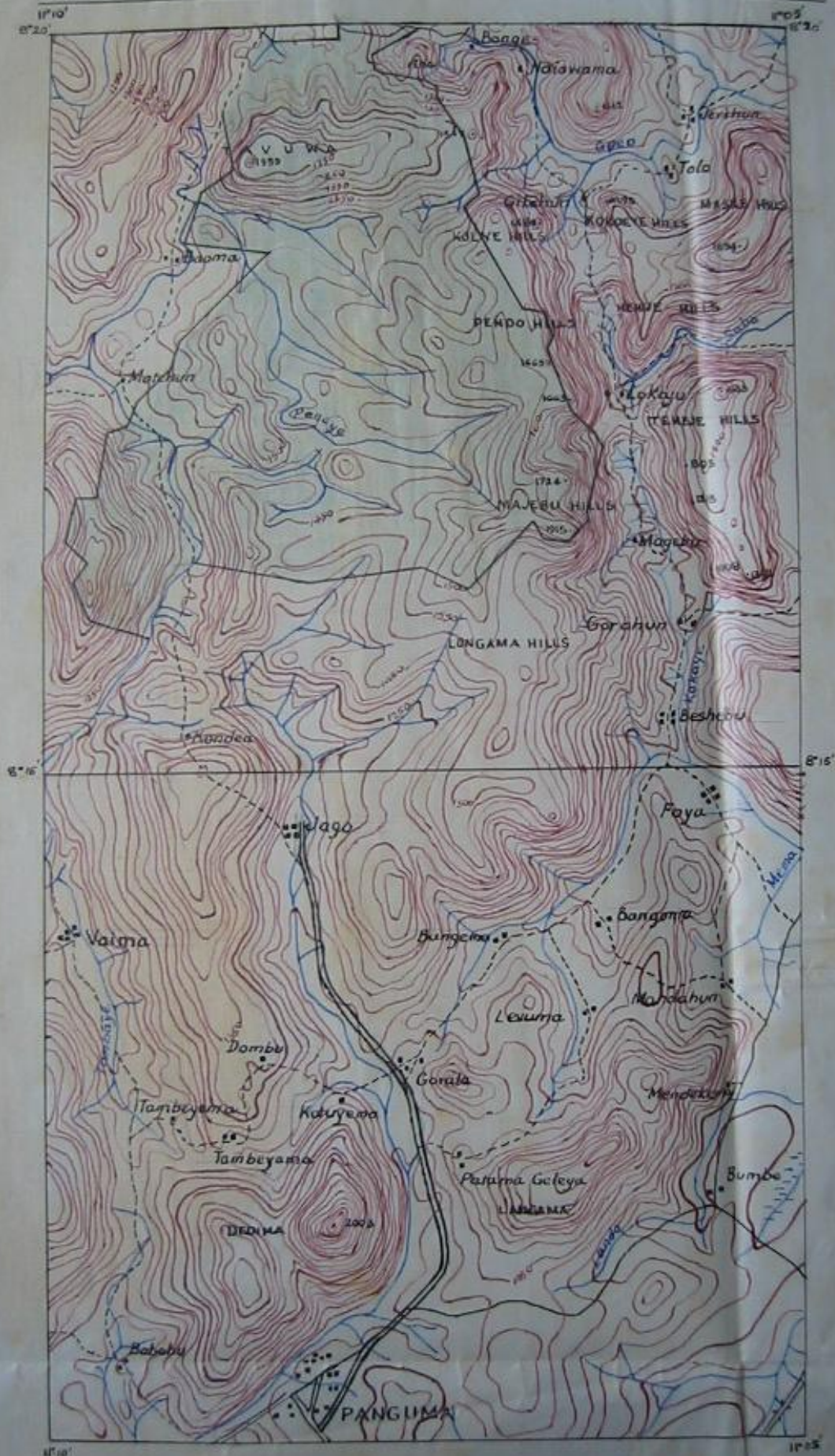
Thence eastwards along the Fowubu-Bongei road for 1,096 yards to boundary stone No. 1 which is described above.

Dated this *ninth* day of November, 1921.



Acting Governor.

PART OF SIERRA LEONE SURVEY SHEETS 66 & 78
 SHOWING DODO HILLS FOREST RESERVE (COLOURED GREEN)



GOV

WHEREAS the 18th and the Forestry Settlement Chief Anam Chief Biriwa

AND WHERE September, 1 determined Upper Ramb District of the schedule Forest Res

NOW, THE

1. This (Dodo Hills)
2. The shall be cons
3. The chiefdoms shall much of their respective for the paraminata (M. palisaca) (p trees of the the taking des and liases and wild animal sharpen

