

S A N K A N

B I R I W A

F O R E S T

R E S E R V E

Colony of Sierra Leone.

Public Notice No. 81 of 1947

M.P. 5499

FORESTRY ORDINANCE, 1924.

(Cap. 74).

The Bankan Biriwa Forest Reserve Order, 1947

In exercise of the powers conferred upon the Governor by section 11 of the Forestry Ordinance, 1924, the following Order is hereby made:-

1. This Order may be cited as the Bankan Biriwa Forest Reserve Order, 1947

2. The land described in Schedule I hereto is hereby constituted a Forest Reserve.

3. The owners of houses as detailed in Schedule II hereto shall be entitled at all times to enter the part of the Forest Reserve hereby created which lies within their Chiefdom, without fee, let or hinderance for the following purposes :-

- (1) - To cultivate swamps
- (2) - To harvest the crops and the fruits of all trees.
- (3) - To tap palms for palm wine
- (4) - To hunt, capture or kill wild animals, birds, fish or reptiles in accordance with the law.
- (5) - To cut and collect wood and building materials as may be reasonably necessary for erecting and maintaining buildings of native construction for their own domestic use. Provided that no right holder, within the Lhei and Sando Chiefdoms, shall exercise this right in respect of trees exceeding eighteen inches in circumference.

SCHEDULE I.

All that part and parcel of land in the Lhei and Sando Chiefdoms of the Kono District, and the Saradugu Chiefdom in the Koinadugu District and bounded as follows :-

Starting from B.S. 1 which is situated approximately 32 chains S.S.W. of the village of Konelo in the Lhei Chiefdom of the Kono District; thence on a magnetic bearing of 65° to B.S. 2 distant approximately 39 chains; thence following the right bank of an unnamed stream in a general N.E. direction to B.S. 3 distant approximately 9 chains; thence on a magnetic bearing of 144° to B.S. 4 dist. approx. 5 chains;

"	"	"	"	"	325°	"	"	5	"	"	6	"	;
"	"	"	"	"	47°	"	"	6	"	"	20	"	;

thence following the right bank of the Mansayi Stream in a general N.E. direction to B.S. 7 distant approximately 80 chains;

"	"	"	"	"	35°	"	"	8	"	"	95	"	'
"	"	"	"	"	20°	"	"	9	"	"	12	"	
"	"	"	"	"	350°	"	"	10	"	"	48	"	
"	"	"	"	"	265°	"	"	11	"	"	7	"	

thence on a magnetic bearing of 350° to B.S. 12 dist. approx. 17 chains

"	"	"	"	"	"	360°	"	"	13	"	"	62	"
"	"	"	"	"	"	295°	"	"	14	"	"	52	"
"	"	"	"	"	"	360°	"	"	15	"	"	17	"
"	"	"	"	"	"	42°	"	"	16	"	"	13	"
"	"	"	"	"	"	19°	"	"	17	"	"	8	"
"	"	"	"	"	"	60°	"	"	18	"	"	15	"

" following the footpath Kimadu to Bakando in a general N.W. direction to B.S. 19 distant approximately 160 chains ;
thence on a magnetic bearing of 265° to B.S. 20 dist. approx. 3 chains;

"	"	"	"	"	"	330°	"	"	21	"	"	12	"
"	"	"	"	"	"	260°	"	"	22	"	"	16	"
"	"	"	"	"	"	20°	"	"	23	"	"	8	"
"	"	"	"	"	"	322°	"	"	24	"	"	52	"
"	"	"	"	"	"	338°	"	"	25	"	"	52	"

thence following the footpath Bakando to Kunso Kansado in a general Northerly direction to B.S. 26 distant 26 chains;
thence following the same footpath Bankando-Kunso Kansado in a general N.N. W. direction to B.S. 27 distant approximately 68 chains;
thence on a magnetic bearing of 270° to B.S. 28 dist. approx. 3 chains;

"	"	"	"	"	"	307°	"	"	29	"	"	41	"
"	"	"	"	"	"	37°	"	"	30	"	"	16	"

thence following the footpath Kunso Kansado to Gbanguria in a general N. direction to B.S. 31 on the 2500 contour and distant approximately 40 chains;

thence on a magnetic bearing of 245° to B.S. 32 dist. approx. 4.77 chains

"	"	"	"	"	"	230°	"	"	33	"	"	13.30	"
"	"	"	"	"	"	280°	"	"	34	"	"	13.39	"
"	"	"	"	"	"	227°	"	"	35	"	"	7.80	"
"	"	"	"	"	"	278°	"	"	36	"	"	11.82	"
"	"	"	"	"	"	301°	"	"	37	"	"	8.91	"
"	"	"	"	"	"	240°	"	"	38	"	"	7.09	"
"	"	"	"	"	"	212°	"	"	39	"	"	19.50	"
"	"	"	"	"	"	230°	"	"	40	"	"	19.50	"
"	"	"	"	"	"	158°	"	"	41	"	"	1.50	"
"	"	"	"	"	"	267°	"	"	42	"	"	7.00	"
"	"	"	"	"	"	243°	"	"	43	"	"	19.50	"
"	"	"	"	"	"	246°	"	"	44	"	"	9.00	"
"	"	"	"	"	"	203°	"	"	45	"	"	21.83	"
"	"	"	"	"	"	200°	"	"	46	"	"	3.23	"
"	"	"	"	"	"	196°	"	"	47	"	"	54.23	"

thence on a magnetic bearing of 190° to B.S. 48 dist. approx. 7.15 chains

"	"	"	"	"	"	162°	"	"	49	"	"	9.50	"
"	"	"	"	"	"	170°	"	"	50	"	"	4.58	"
"	"	"	"	"	"	173°	"	"	51	"	"	24.00	"
"	"	"	"	"	"	166°	"	"	52	"	"	1.62	"
"	"	"	"	"	"	121°	"	"	53	"	"	3.56	"
"	"	"	"	"	"	192°	"	"	54	"	"	7.75	"
"	"	"	"	"	"	163°	"	"	55	"	"	7.05	"
"	"	"	"	"	"	180°	"	"	56	"	"	5.54	"
"	"	"	"	"	"	154°	"	"	57	"	"	22.16	"
"	"	"	"	"	"	203°	"	"	58	"	"	2.38	"
"	"	"	"	"	"	183°	"	"	59	"	"	3.10	"
"	"	"	"	"	"	223°	"	"	60	"	"	4.60	"
"	"	"	"	"	"	191°	"	"	61	"	"	2.65	"
"	"	"	"	"	"	162°	"	"	62	"	"	1.09	"
"	"	"	"	"	"	181°	"	"	63	"	"	2.35	"
"	"	"	"	"	"	205°	"	"	64	"	"	6.05	"
"	"	"	"	"	"	158°	"	"	65	"	"	6.09	"
"	"	"	"	"	"	260°	"	"	66	"	"	14.42	"
"	"	"	"	"	"	290°	"	"	67	"	"	62.29	"
"	"	"	"	"	"	245°	"	"	68	"	"	31.06	"
"	"	"	"	"	"	180°	"	"	69	"	"	21.17	"
"	"	"	"	"	"	183°	"	"	70	"	"	49.31	"
"	"	"	"	"	"	280°	"	"	71	"	"	23.74	"
"	"	"	"	"	"	190°	"	"	72	"	"	6.03	"
"	"	"	"	"	"	202°	"	"	73	"	"	15.33	"
"	"	"	"	"	"	157°	"	"	74	"	"	16.33	"
"	"	"	"	"	"	190°	"	"	75	"	"	21.79	"
"	"	"	"	"	"	155°	"	"	76	"	"	16.28	"
"	"	"	"	"	"	227°	"	"	77	"	"	7.26	"
"	"	"	"	"	"	160°	"	"	78	"	"	14.55	"
"	"	"	"	"	"	140°	"	"	79	"	"	27.19	"
"	"	"	"	"	"	205°	"	"	80	"	"	15.21	"
"	"	"	"	"	"	282°	"	"	81	"	"	18.10	"
"	"	"	"	"	"	232°	"	"	82	"	"	3.09	"
"	"	"	"	"	"	169°	"	"	83	"	"	76.43	"

-4-

thence on a magnetic bearing of 285° to B.S. 84 dist. approx. 16.10 chains

"	"	"	"	"	"	212°	"	"	85	"	"	14.63	"
"	"	"	"	"	"	255°	"	"	86	"	"	8.03	"
"	"	"	"	"	"	180°	"	"	87	"	"	10.34	"
"	"	"	"	"	"	138°	"	"	88	"	"	2.51	"
"	"	"	"	"	"	198°	"	"	89	"	"	19.16	"
"	"	"	"	"	"	215°	"	"	90	"	"	30.43	"
"	"	"	"	"	"	198°	"	"	91	"	"	78.30	"
"	"	"	"	"	"	135°	"	"	92	"	"	9.48	"
"	"	"	"	"	"	96°	"	"	93	"	"	72.14	"
"	"	"	"	"	"	147°	"	"	94	"	"	31.27	"
"	"	"	"	"	"	219°	"	"	95	"	"	17.27	"
"	"	"	"	"	"	138°	"	"	96	"	"	33.60	"
"	"	"	"	"	"	130°	"	"	97	"	"	7.80	"
"	"	"	"	"	"	105°	"	"	98	"	"	20.97	"
"	"	"	"	"	"	150°	"	"	99	"	"	79.79	"
"	"	"	"	"	"	70°	"	"	100	"	"	61.31	"
"	"	"	"	"	"	15°	"	"	101	"	"	24.77	"
"	"	"	"	"	"	70°	"	"	102	"	"	80.29	"
"	"	"	"	"	"	80°	"	"	103	"	"	59.00	"
"	"	"	"	"	"	60°	"	"	1	which is the starting point distant approximately 56.16 chains.			

The unit of distance measurement in this description is the Gunter Chain = 66 feet.

SCHEDULE II

Ihei Chieftom of Kono District:

The owners of 12 houses in Baordu village.
 " " " 16 " " Kenelo "
 " " " 37 " " Kenewa "
 " " " 14 " " Kimadu "

Sendo Chieftom of Kono District:

The owners of 9 houses in Koindu village
 " " " 7 " " Kiangbasian village
 " " " 6 " " Kasudu village
 " " " 10 " " Dugbema "
 " " " 50 " " Gbinaia "
 " " " 2 " " Sinbakoro "
 " " " 13 " " Kuafuni "

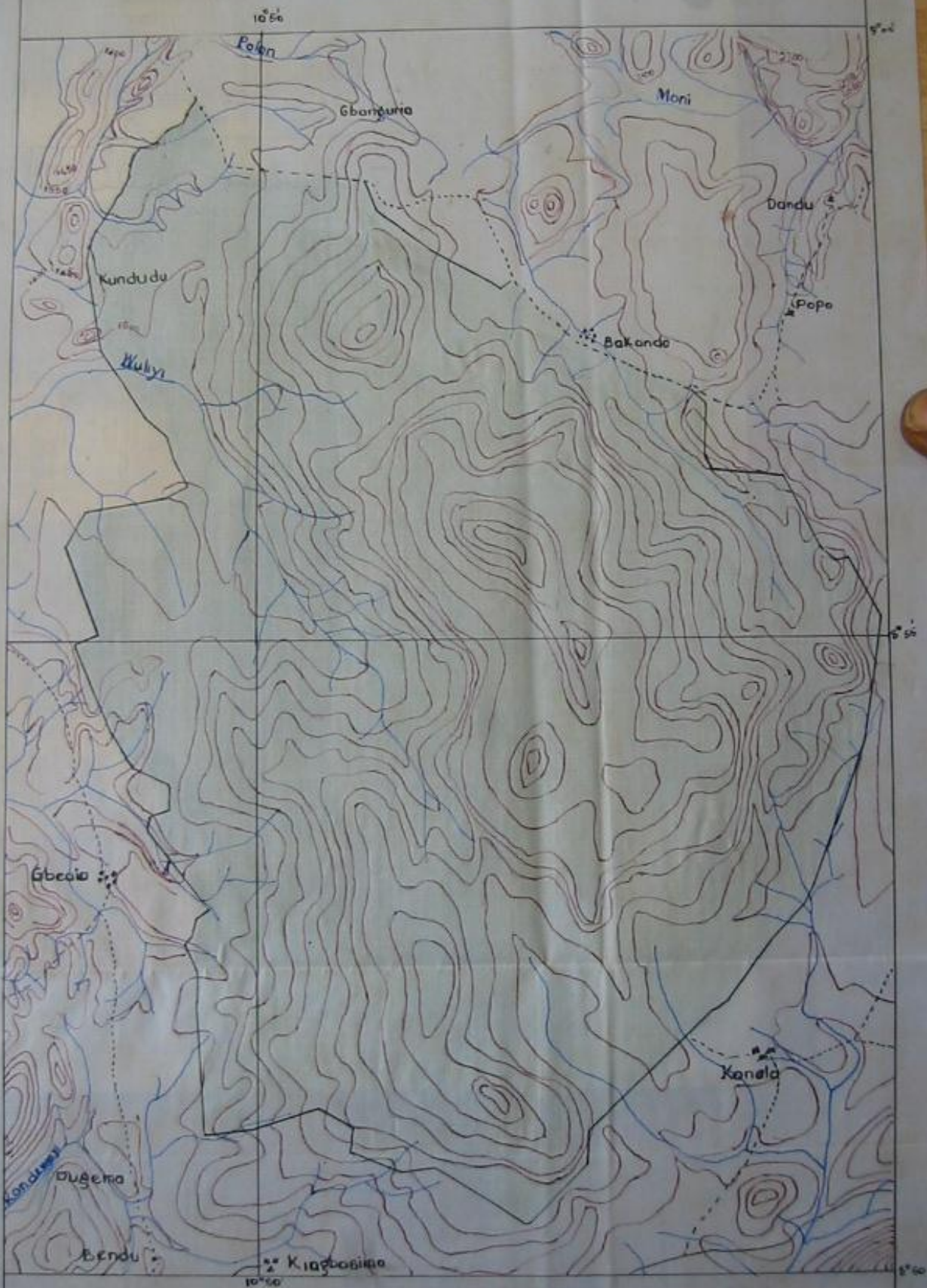
Saraduru Chieftom of Koinaduru District:

The owners of 12 houses in Bakando village
 " " " 12 " " Gbanguria "
 " " " 8 " " Nelikoro "

This day of 194

K 15

PART OF SIERRA LEONE SURVEY SHEET 45
SHOWING SANKANBIRIWA FOREST RESERVE
Coloured Green



Scale 1:62500 or 1.014 Inches to Mile

Miles $\frac{1}{2}$ 0 1 2 3 4 5 Miles