



Specification

COMMUNAL AREAS

- Passenger lift
- Key fob door entry system
- Cycle store
- Central bin area
- CCTV security system
- Video entry system

INTERNAL FINISHES

- Neutral carpet to living room, dining room, bedrooms and hallways
- Wood effect flooring to kitchen
- SAT/TV distribution systems
- Oak doors throughout
- Storage cupboard in hallway

SUSTAINABILITY

- Energy efficient, low energy LED down lighters throughout
- Double glazing throughout

KITCHENS

- Modern fitted kitchens with high gloss finishes.
- Full height splashback behind the hob
- High quality integrated appliances
- Stainless steel inset sink with chrome taps

WARRANTY & AFTERCARE

- Ten year warranty for all new apartments

BATHROOMS

- Hexa Italian mosaic accent tiles
- Spanish floor and wall tiles
- Grohe & Vado sanitaryware
- Slimline shower screen
- Bette bath tub with legs

ELECTRICAL FITTINGS & HEATING

- Fire detection system
- Central heating system
- USB sockets

EXTERNAL

- Fob entry gated car parking
- Allocated parking spaces for two and three bedroom apartments

COMING SOON - REGISTER YOUR INTEREST

RESERVE YOUR UNIT NOW



**WINDSOR
HOUSE**

WORCESTER PARK

A fantastic new development in the heart of Worcester Park offering the opportunity to own one of fourteen high specification luxury apartments ranging from one, two and three bedroomed units.

Being in the heart of Worcester Park, Windsor House offers direct transport connections into central London as well as Kingston, Epsom, Sutton, Croydon and London Heathrow making Worcester Park the ideal location for working and living.

At Windsor House every consideration has been made to incorporate today's modern lifestyle.

Windsor Road, Worcester Park, KT4 8ES | £490,000
Call us today on 0208 432 2347

HUNTERS®
HERE TO GET *you* THERE

Windsor Road, Worcester Park, Surrey KT4 8ES

EXCLUSIVE TO HUNTERS - CALL 020 8432 2437

HUNTERS ESTATE AGENTS ARE PROUD TO PRESENT THIS FANTASTIC NEW DEVELOPMENT COMPRISING OF 14 APARTMENTS STARTING AT JUST £330,000! SITUATED ON THE HIGH STREET, MOMENTS FROM THE LOCAL AMENITIES AND TRANSPORT LINKS, CALL NOW TO RESERVE YOUR NEW HOME IN A VIBRANT AND COSMOPOLITAN AREA. ALL THE APARTMENTS ARE BRIGHT, SPACIOUS AND HAVE BEEN FINISHED TO A VERY LUXURIOUS AND MODERN STANDARD.



KITCHEN DINING LIVING ROOM

7.82m (25' 8") * 6.14m (20' 2")

BEDROOM 1

4.11m (13' 6") * 3.16m (10' 4")

BEDROOM 2

3.89m (12' 9") * 3.05m (10' 0")

BATHROOM

2.69m (8' 10") * 2.11m (6' 11")



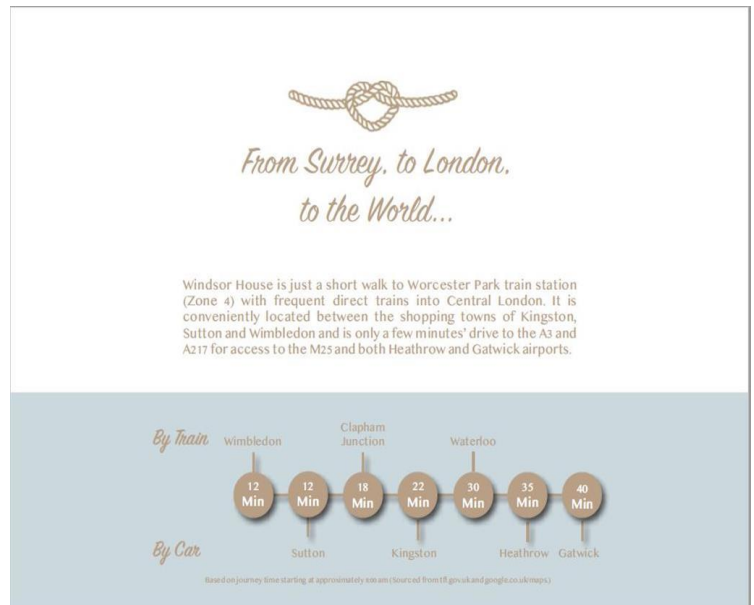
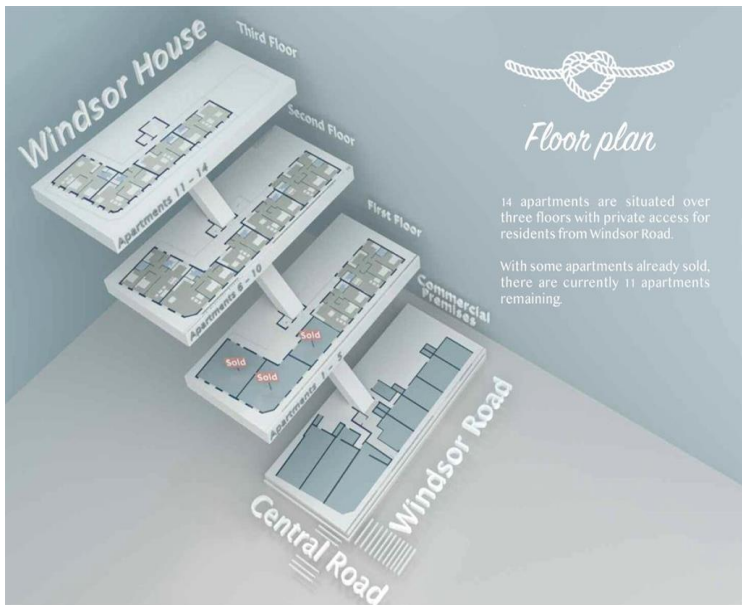
Welcome to Windsor House...

An exciting new development in the heart of Worcester Park, offering the opportunity to own one of fourteen one, two and three bedroom luxury apartments, complete with a passenger lift, CCTV and Video Entry System.

Meeting the growing needs of today's busy professional, every apartment has been thoughtfully designed to maximise living space. They all benefit from oak doors throughout, with well-proportioned bedrooms, spacious living areas, and all bathrooms fitted to high specification fixtures and fitting. The kitchen also boasts fully integrated units with high gloss finish and with a full height splashback behind the hob.

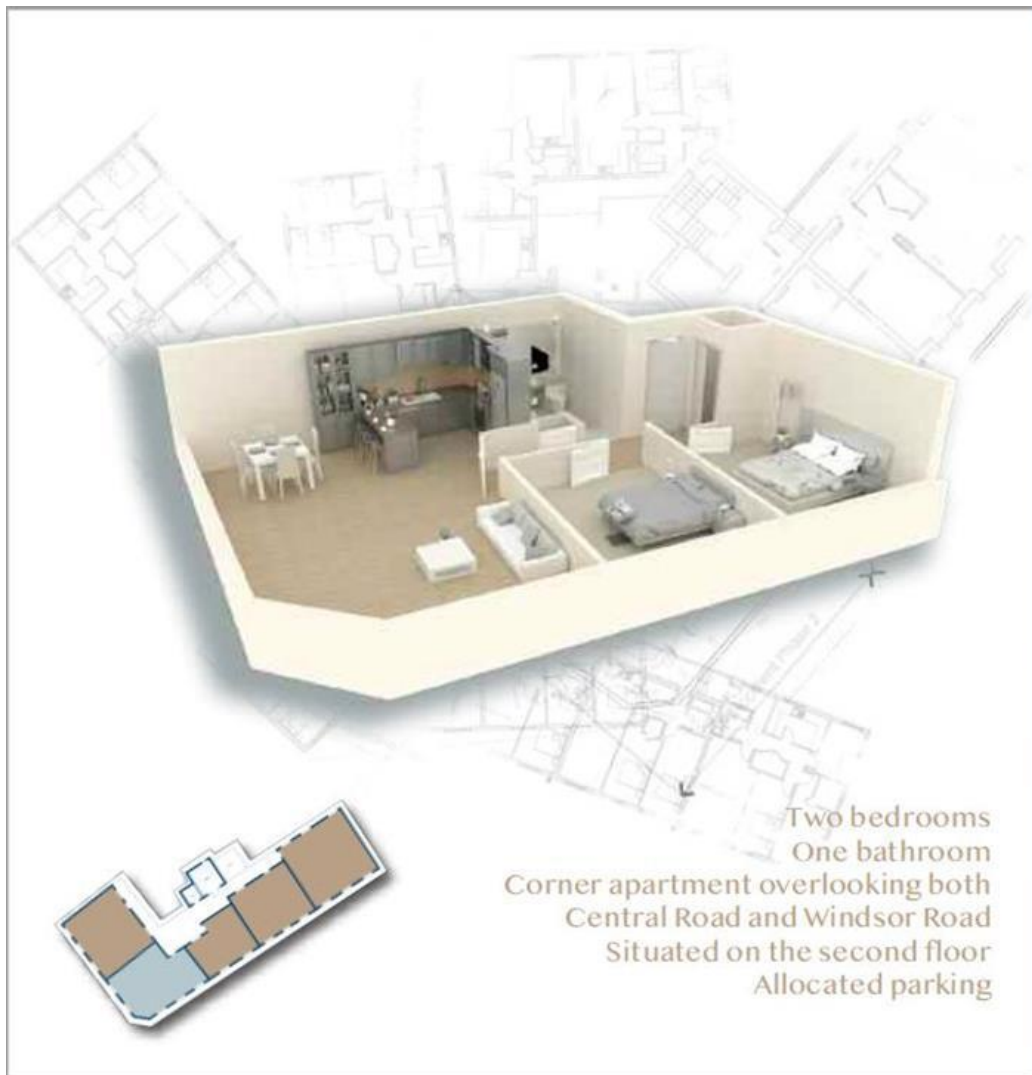
Situated in the heart of Worcester Park, a charming and cosmopolitan part of Surrey. Windsor House has all the amenities and benefits of a local high street at its doorstep plus an active local community. Windsor House is just a short distance from the picturesque Nonsuch Park with its mix of open spaces and woodlands – the perfect balance between urban and country living along with also benefits from direct transport connections into London as well as Kingston, Epsom, Sutton, Croydon and Heathrow.

At Windsor House every consideration has been made to incorporate today's modern lifestyle.



«Picture7»

«Picture8»




Apartment Seven

**Kitchen / Dining /
 Living Room**
 7.82m x 6.14m
Bedroom 1
 4.11m x 3.16m
Bedroom 2
 3.89m x 3.05m
Bathroom
 2.69m x 2.10m

Total area 78 sqm



Two bedrooms
 One bathroom
 Corner apartment overlooking both
 Central Road and Windsor Road
 Situated on the second floor
 Allocated parking

«EpcGraph»

DISCLAIMER

These particulars are intended to give a fair and reliable description of the property but no responsibility for any inaccuracy or error can be accepted and do not constitute an offer or contract. We have not tested any services or appliances (including central heating if fitted) referred to in these particulars and the purchasers are advised to satisfy themselves as to the working order and condition. If a property is unoccupied at any time there may be reconnection charges for any switched off/disconnected or drained services or appliances - All measurements are approximate.



SALES / LETTINGS / MANAGEMENT
 Central Road Worcester Park, KT4 8HU
 worcesterpark@hunters.com / 0208 432 2347

HUNTERS®
 HERE TO GET *you* THERE