

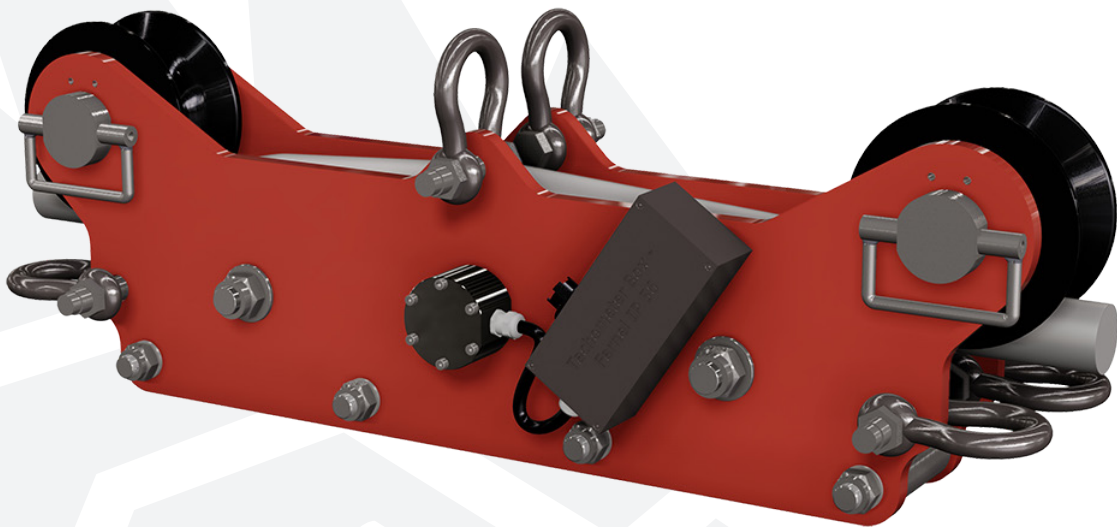


**RED ROOSTER
LIFTING**

RAISING EXPECTATIONS

RLM RUNNING LINE MONITOR

The **RLM** is a Running Line Monitor from Red Rooster Lifting's telemetry range. The cells range in capacity from 15 to 50 tonne.



Red Rooster Lifting's running line monitor is the perfect tool for measuring the tension in a travelling rope. The load measuring equipment can be tailored to suit your output requirements.

Produced to accept cable diameters from 13mm to 88mm, the Red Rooster RLM system electronically monitors the load on a running line (winch, crane, etc.) and is displayed digitally. It can optionally monitor the length of the line out and speed (including direction) in any engineering units. It's modular design enables facilities to be added or removed as requirements change.

STANDARD FEATURES

- Five wheel construction guides wire smoothly onto the monitoring wheel
- Wire may be fitted without tools, using a gloved hand
- Load pin forms shaft of centre wheel
- Strain gauges mounted in shaft bore (High impact protection & IP65)
- Wheels mounted on roller bearings with grease nipples
- Readily interfaces with SWLPC/J display
- 10-12 hour battery life between charges
- Battery charger
- 10m extension cable

AVAILABLE OPTIONS

- Line speed monitoring
- Line out monitoring
- Mains operation
- PC interfacing & data logging
- Paperless chart recorder
- RS232 output



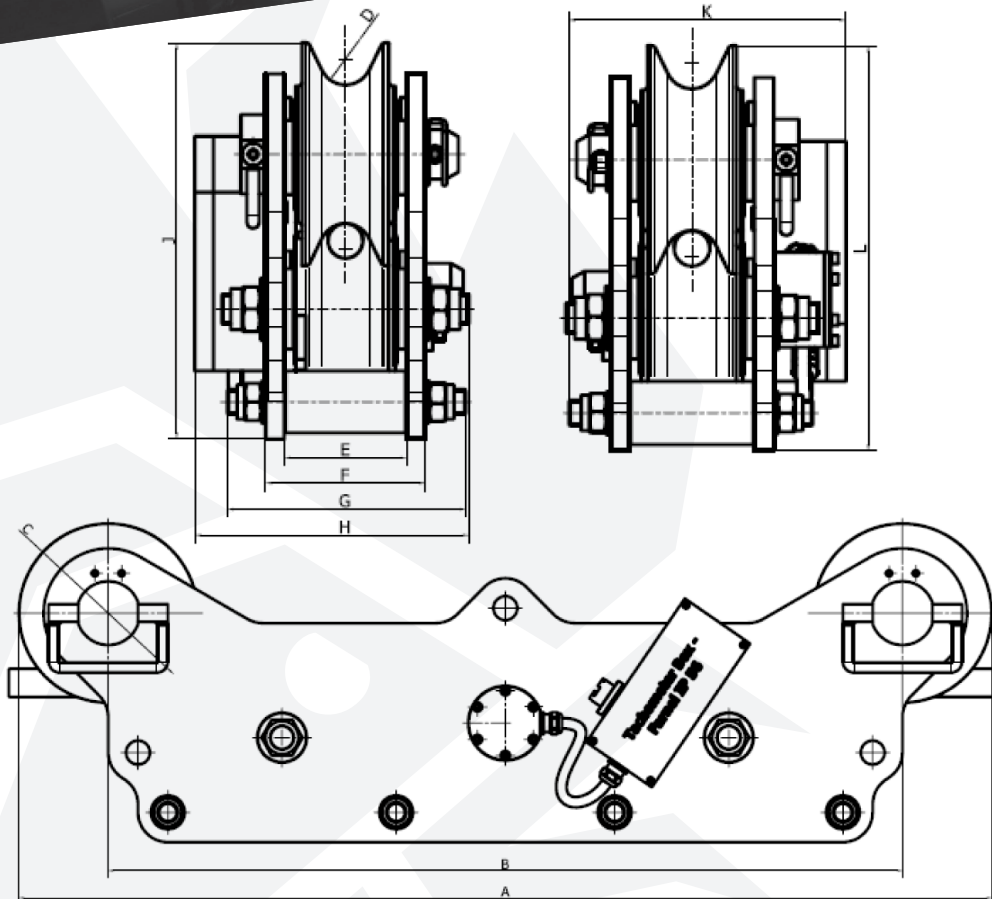
RLM RUNNING LINE MONITOR

**RED ROOSTER
LIFTING**

RAISING EXPECTATIONS

DIMENSIONS

All measurements are in mm
Information subject to change without notice



TECHNICAL SPECIFICATION

MODEL	SUIT WIRE ROPE DIAMETER	MAXIMUM CAPACITY
RLM20	13mm - 26mm	15 tonne
RLM35	28mm - 40mm	35 tonne
RLM50	42mm - 48mm	50 tonne
RLM50+	50mm - 52mm	50 tonne

DIMENSIONS

MODEL	A	B	C	D	E	F	G	H	J	K	L
RLM20	980	800	180	30	98	128	192	220	320	218	320
RLM35	980	800	180	42	98	128	192	220	320	218	320
RLM50	980	800	180	To Suit	98	128	192	220	320	218	320
RLM50+	980	800	180	To Suit	98	128	192	220	320	218	320