

CB200 ATEX ATEX MANUAL CHAIN HOIST



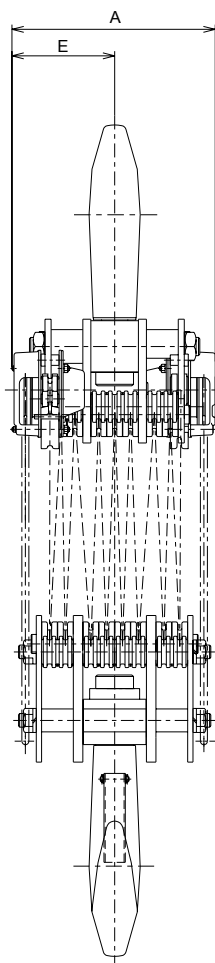
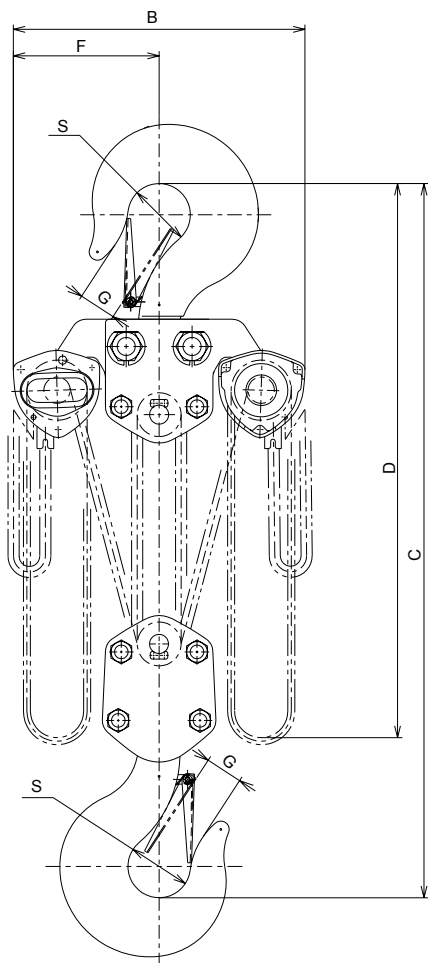
RED ROOSTER LIFTING

STANDARD FEATURES

- ▷ Screw-and-disc type load brake
- ▷ Double pawl spring
- ▷ Nickel-plated load chain grade V (G100)
- ▷ Group II 2 GDc IIB T4 135°C
- ▷ Operating temp -40°C to +30°C
- ▷ Made in Japan

AVAILABLE OPTIONS

- ▷ Geared trolley
- ▷ Plain trolley
- ▷ Overload limiter
- ▷ Canvas chain bucket



MODEL	HEADROOM C	A	B	D	E	F	G	S
CB200 ATEX	1180	374	746	4800	187	373	81	110

All measurements are in mm

MODEL	CB200 ATEX
WLL	20000 kg
STANDARD LIFT	4.5 m
HAND PULL TO LIFT FULL LOAD	35.3 daN x 2
LOAD CHAIN DIAMETER x CHAIN FALL	9.0 x 27.2 mm
CHAIN FALL	8
NET WEIGHT	235.0 kg
WEIGHT PER ADDITIONAL METRE LIFT	15.8 kg

Information subject to change without notice

KITO

RED ROOSTER LIFTING

Nauta House, The Meadows
Oldmeldrum, Aberdeenshire
United Kingdom, AB51 0EZ

T: +44 (0) 1651 872101
E: sales@redroosterlifting.com
W: www.redroosterlifting.com