

CB300 ATEX ATEX MANUAL CHAIN HOIST



RED ROOSTER LIFTING

STANDARD FEATURES

- ▷ Screw-and-disc type load brake
- ▷ Double pawl spring
- ▷ Nickel-plated load chain grade V (G100)
- ▷ Group II 2 GDc IIB T4 135°C
- ▷ Operating temp -40°C to +30°C
- ▷ Made in Japan

AVAILABLE OPTIONS

- ▷ Geared trolley
- ▷ Plain trolley
- ▷ Overload limiter
- ▷ Canvas chain bucket

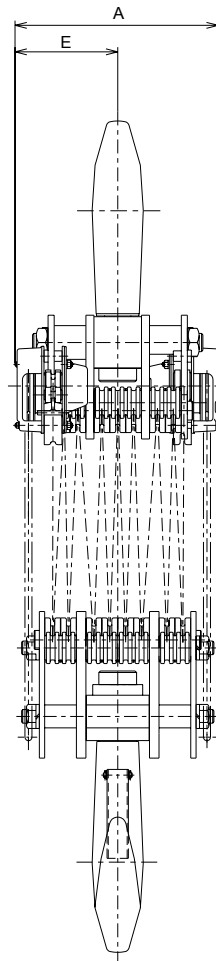
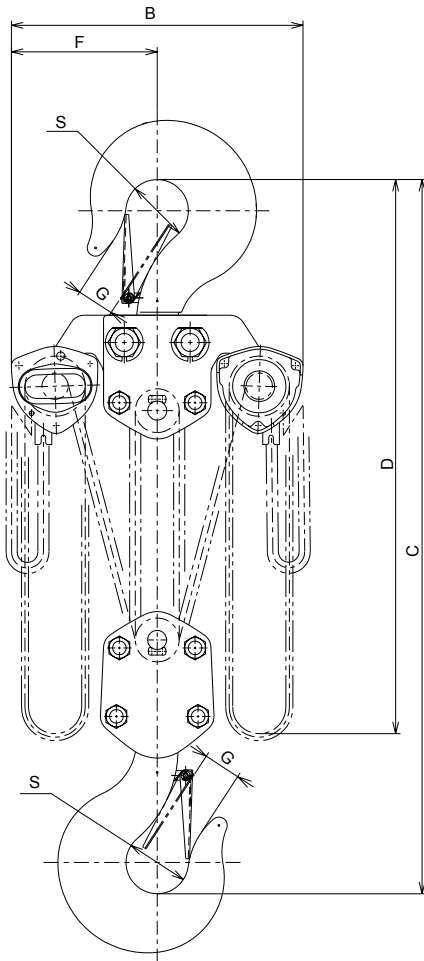


Image for illustration purposes only

MODEL	HEADROOM C	A	B	D	E	F	G	S
CB300 ATEX	1300	404	746	4800	202	373	103	125

All measurements are in mm

MODEL	CB300 ATEX
WLL	30000 kg
STANDARD LIFT	4.5 m
HAND PULL TO LIFT FULL LOAD	42.1 daN x 2
LOAD CHAIN DIAMETER x CHAIN FALL	9.0 x 27.2 mm
CHAIN FALL	10
NET WEIGHT	310.0 kg
WEIGHT PER ADDITIONAL METRE LIFT	19.2 kg

Information subject to change without notice

KITO

RED ROOSTER LIFTING

Nauta House, The Meadows
Oldmeldrum, Aberdeenshire
United Kingdom, AB51 0EZ

T: +44 (0) 1651 872101
E: sales@redroosterlifting.com
W: www.redroosterlifting.com