

CB400 ATEX ATEX MANUAL CHAIN HOIST



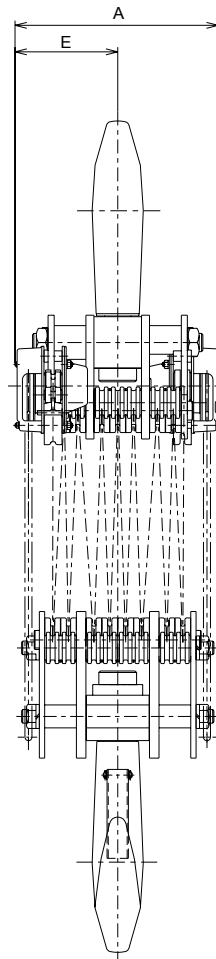
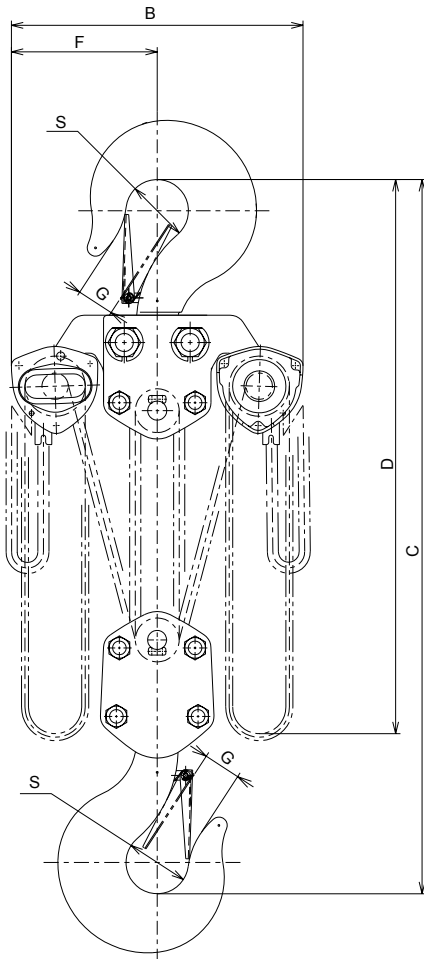
RED ROOSTER LIFTING

STANDARD FEATURES

- ▷ Screw-and-disc type load brake
- ▷ Double pawl spring
- ▷ Nickel-plated load chain grade V (G100)
- ▷ Group II 2 GDc IIB T4 135°C
- ▷ Operating temp -40°C to +30°C
- ▷ Made in Japan

AVAILABLE OPTIONS

- ▷ Geared trolley
- ▷ Plain trolley
- ▷ Overload limiter
- ▷ Canvas chain bucket



MODEL	HEADROOM C	A	B	D	E	F	G	S
CB400 ATEX	1480	502	760	4900	251	380	93	145

All measurements are in mm

MODEL	CB400 ATEX
WLL	40000 kg
STANDARD LIFT	4.5 m
HAND PULL TO LIFT FULL LOAD	42.1 daN x 2
LOAD CHAIN DIAMETER x CHAIN FALL	9.0 x 27.2 mm
CHAIN FALL	14
NET WEIGHT	480.0 kg
WEIGHT PER ADDITIONAL METRE LIFT	26.2 kg

Information subject to change without notice

KITO

RED ROOSTER LIFTING

Nauta House, The Meadows
Oldmeldrum, Aberdeenshire
United Kingdom, AB51 0EZ

T: +44 (0) 1651 872101
E: sales@redroosterlifting.com
W: www.redroosterlifting.com