

1" (Ø 56 mm) Technical Information

Tank Unit (Adapter) and Hose Unit (Coupler)



Material	Maximum Working Pressure	Test Pressure	Minimum Burst Pressure
Aluminium	16 bar / 232 psi	24 bar / 348 psi	80 bar / 1160 psi
Brass / Gunmetal	16 bar / 232 psi	24 bar / 348 psi	80 bar / 1160 psi
Stainless Steel	25 bar / 363 psi	37,5 bar / 544 psi	125 bar / 1813 psi
Titan	25 bar / 363 psi	37,5 bar / 544 psi	125 bar / 1813 psi
Hastelloy	25 bar / 363 psi	37,5 bar / 544 psi	125 bar / 1813 psi
PEEK	6 bar / 87 psi	9 bar / 131 psi	30 bar / 435 psi

Connections

¾", 1" and 1¼" in BSP, NPT or metrical thread, or flanged inlet.

Applications

For industrial process plant, road and rail tankers, IBC containers, pharmaceutical and petrochemical industries, diesel locomotive refuelling etc.

Recommended for all types of mini bulk liquid product transfer, including container and drum filling, or on any application where spillage needs to be minimized.

Media

Petroleum products: gasoline, diesel, oil etc.

Chemical products: e.g. ethylene oxide, propylene oxide, acrylonitrile, butadiene, ammonia, vinyl chloride, toluene, xylene, sulphuric acid, phenol etc.

Gas: vapor recovery/balance systems for various media.

Material of Body

Aluminium, brass, stainless steel, Hastelloy and PEEK. Others on request.

Seals

Standard seals in FPM (Viton®) - alternatively EPDM, FKM (Chemraz®, Kalrez®), NBR/HBNR. Other materials on request.

High Flow Rates / Low Pressure Drop

Allows maximum product transfer with minimal losses

Recommended Maximum Flow Rates

200 litres / minute (fuel)

Selectivity

- avoid mixing products

To avoid product contamination caused by connecting a hose unit to the wrong tank unit, selective versions of the hose and tank units are available. Each unit has a number of selective positions, designated by a coded part number according to the coupling size – specify when placing order. See page 32 ff.

Interchangeability

Compatible with couplings of other manufacturers.

Hose Unit with Integrated Swivel

All hose units are supplied with an integrated swivel.

1" (Ø 56 mm) Tank Unit (Adapter) – Female Thread

Connection ¹⁾ Inch/DN	Body Material ²⁾	Seal		Weight ≈		Mann Tek Code No.
		O-Ring ³⁾	Flat Seal	kg	lbs	
F 1/2" BSP	Al	Standard: FPM/FKM (Viton®)	PUR (Polyurethane)	0,3	0.7	T1133A1101B
F 3/4" BSP						T101A1101B
F 1" BSP						T103A1101B
F 1 1/4" BSP						T105A1101B
F M 54 x 1,5						T1138A1101B
F 1/2" NPT			—	T1132A1101		
F 3/4" NPT				T102A1101		
F 1" NPT				T104A1101		
F 1 1/4" NPT				T106A1101		
F 1/2" BSP				Br	Standard: FPM/FKM (Viton®)	PUR (Polyurethane)
F 3/4" BSP	T101A2201B					
F 1" BSP	T103A2201B					
F 1 1/4" BSP	T105A2201B					
F M 54 x 1,5	T1138A2201B					
F 1/2" NPT	—	T1132A2201				
F 3/4" NPT		T102A2201				
F 1" NPT		T104A2201				
F 1 1/4" NPT		T106A2201				
F 1/2" BSP		SS	Other on request.			PTFE (Teflon®)
F 3/4" BSP	T101A4401A					
F 1" BSP	T103A4401A					
F 1 1/4" BSP	T105A4401A					
F M 54 x 1,5	T1138A4401A					
F 1/2" NPT	—			T1132A4401		
F 3/4" NPT				T102A4401		
F 1" NPT				T104A4401		
F 1 1/4" NPT				T106A4401		
F 3/4" BSP				Titan	Standard: FPM/FKM (Viton®)	PTFE (Teflon®)
F 1" BSP	T103A6601A					
F 1 1/4" BSP	T105A6601A					
F 3/4" NPT	—	T102A6601				
F 1" NPT		T104A6601				
F 1 1/4" NPT		T106A6601				
F 3/4" BSP	Hastelloy	Other on request.	PTFE (Teflon®)	0,8	1.8	T101A7701A
F 1" BSP						T103A7701A
F 1 1/4" BSP						T105A7701A
F 3/4" NPT			—	T102A7701		
F 1" NPT				T104A7701		
F 1 1/4" NPT				T106A7701		
F 3/4" BSP	PEEK	Standard: FPM/FKM (Viton®)	PTFE (Teflon®)	0,1	0.2	T101A9901A
F 1" BSP						T103A9901A
F 1 1/4" BSP						T105A9901A
F 3/4" NPT			—	T102A9901		
F 1" NPT				T104A9901		
F 1 1/4" NPT				T106A9901		



¹⁾ F = Female thread, BSP = EN ISO 228, NPT = ANSI B1.20.1

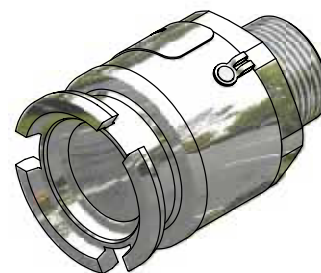
²⁾ Material: Al = Aluminium, Br = Brass, SS = Stainless Steel

³⁾ Standard seal FPM/FKM. Alternative materials, e.g. EPDM, Chemraz®, Kalrez®, NBR or HNBR on request.

Viton® and Teflon® are registered trademarks of DuPont, DuPont Elastomers.

1" (Ø 56 mm) Tank Unit (Adapter) – Male Thread

Connection ¹⁾ Inch/DN	Body Material ²⁾	Seal ³⁾	Weight ≈		Mann Tek Code No.		
		O-Ring	kg	lbs			
M ¾" BSP	Al	Standard: FPM/FKM (Viton®)			T169A1101		
M ¾" NPT					T170A1101		
M 1" BSP					T171A1101		
M 1" NPT					T172A1101		
M ¾" BSP	Br		Other on request.			T169A1101	
M ¾" NPT						T170A1101	
M 1" BSP						T171A1101	
M 1" NPT						T172A1101	
M ¾" BSP	SS			Other on request.			T169A4401
M ¾" NPT							T170A4401
M 1" BSP							T171A4401
M 1" NPT							T172A4401



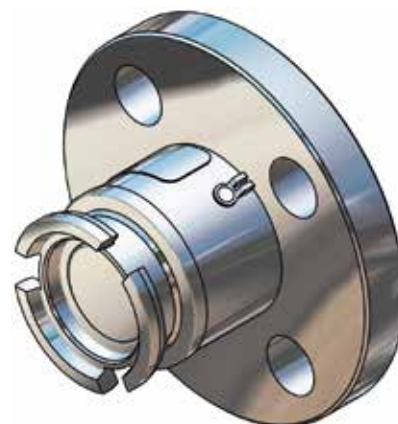
¹⁾ M = Male thread, BSP = EN ISO 228, NPT = ANSI B1.20.1

²⁾ Material: Al = Aluminium, Br = Brass, SS = Stainless Steel,

³⁾ Standard seal FPM/FKM. Alternative materials, e.g. EPDM, Chemraz®, Kalrez®, NBR or HNBR on request.

1" (Ø 56 mm) Tank Unit (Adapter) – Flanged Inlet

Flange ¹⁾	Body Material ²⁾	Seal ³⁾	Weight ≈		Mann Tek Code No.		
		O-Ring	kg	lbs			
undrilled	Al	Standard: FPM/FKM (Viton®)	1,1	2,4	T118A1101		
DN 25 PN 10/16 Type A					T123A1101		
DN 25 PN 25/40 Type A					T124A1101		
1" ASA 150					T151A1101		
1" ASA 300					T152A1101		
undrilled	Br		Other on request.	1,6	3,5	T118A2201	
DN 25 PN 10/16 Type B						T123A2201	
DN 25 PN 25/40 Type B						T124A2201	
1" ASA 150						T151A2201	
1" ASA 300						T152A2201	
undrilled	SS			Other on request.	1,5	3,3	T118A4401
DN 25 PN 10/16 Type B							T123A4401
DN 25 PN 25/40 Type B							T124A4401
1" ASA 150							T151A4401
1" ASA 300							T152A4401
undrilled	Titan	Other on request.			0,8	1,8	T118A6601
DN 25 PN 10/16 Type B							T123A6601
DN 25 PN 25/40 Type B							T124A6601
1" ASA 150							T151A6601
1" ASA 300							T152A6601
DN 25 PN 10/16 Type B	Hastelloy		Other on request.		1,7	3,8	T123A7701
DN 25 PN 25/40 Type B							T124A7701
1" ASA 150							T151A7701
1" ASA 300							T152A7701
undrilled	PEEK				Other on request.	0,2	0,4
DN 25 PN 10/16 Type B				T123A9901			
DN 25 PN 25/40 Type B				T124A9901			
1" ASA 150				T151A9901			
1" ASA 300				T152A9901			



¹⁾ PN 10/16/25/40 = EN 1092 (types see page 44), ANSI B16.5.

²⁾ Material: Al = Aluminium, Br = Brass, SS = Stainless Steel

³⁾ Standard seal FPM/FKM. Alternative materials, e.g. EPDM, Chemraz®, Kalrez®, NBR or HNBR on request.

Viton® is a registered trademark of DuPont, DuPont Elastomers.

1" (Ø 56 mm) Hose Unit (Coupler) – Female Thread

Connection ¹⁾ Inch/DN	Body Material ²⁾	Seal		Weight ≈		Mann Tek Code No.
		O-Ring ³⁾	Thread Seal	kg	lbs	
F ½" BSP	Al		PUR (Polyurethane)	0,5	1.1	S1133A1101B
F ¾" BSP						S101A1101B
F 1" BSP						S103A1101B
F 1¼" BSP						S105A1101B
F M 54 x 1,5						S1138A1101B
F ½" NPT						S1132A1101
F ¾" NPT						S102A1101
F 1" NPT						S104A1101
F 1¼" NPT						S106A1101
F ½" BSP	Br		PUR (Polyurethane)	1,4	3.1	S1133A2201B
F ¾" BSP						S101A2201B
F 1" BSP						S103A2201B
F 1¼" BSP						S105A2201B
F M 54 x 1,5						S1138A2201B
F ½" NPT						S1132A2201
F ¾" NPT						S102A2201
F 1" NPT						S104A2201
F 1¼" NPT						S106A2201
F ½" BSP	SS	Standard: FPM/FKM (Viton®)	PTFE (Teflon®)	1,3	2.9	S1133A4401A
F ¾" BSP						S101A4401A
F 1" BSP						S103A4401A
F 1¼" BSP						S105A4401A
F M 54 x 1,5						S1138A4401A
F ½" NPT						S1132A4401
F ¾" NPT						S102A4401
F 1" NPT						S104A4401
F 1¼" NPT						S106A4401
F ¾" BSP	Titan		PTFE (Teflon®)	0,7	1.5	S101A6601A
F 1" BSP						S103A6601A
F 1¼" BSP						S105A6601A
F ¾" NPT						S102A6601
F 1" NPT						S104A6601
F 1¼" NPT	S106A6601					
F ¾" BSP	Hastelloy		PTFE (Teflon®)	1,5	3.3	S101A7701A
F 1" BSP						S103A7701A
F 1¼" BSP						S105A7701A
F ¾" NPT						S102A7701
F 1" NPT						S104A7701
F 1¼" NPT	S106A7701					
F ¾" BSP	PEEK		PTFE (Teflon®)	0,3	0.7	S101A9901A
F 1" BSP						S103A9901A
F 1¼" BSP						S105A9901A
F ¾" NPT						S102A9901
F 1" NPT						S104A9901
F 1¼" NPT	S106A9901					



¹⁾ F = Female thread, BSP = EN ISO 228, NPT = ANSI B1.20.1

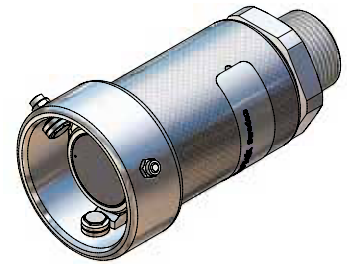
²⁾ Material: Al = Aluminium, Br = Brass, SS = Stainless Steel

³⁾ Standard seal FPM/FKM. Alternative materials, e.g. EPDM, Chemraz®, Kalrez®, NBR or HNBR on request.

Viton® and Teflon® are registered trademarks of DuPont, DuPont Elastomers.

1" (Ø 56 mm) Hose Unit (Coupler) – Male Thread

Connection ¹⁾ Inch/DN	Body Material ²⁾	Seal ³⁾	Weight ≈		Mann Tek Code No.		
		O-Ring	kg	lbs			
M ¾" BSP	Al	Standard: FPM/FKM (Viton®)			S169A1101		
M ¾" NPT					S170A1101		
M 1" BSP					S171A1101		
M 1" NPT					S172A1101		
M ¾" BSP	Br		Other on request.			S169A1101	
M ¾" NPT						S170A1101	
M 1" BSP						S171A1101	
M 1" NPT						S172A1101	
M ¾" BSP	SS			Other on request.			S169A4401
M ¾" NPT							S170A4401
M 1" BSP							S171A4401
M 1" NPT							S172A4401
					1,4	3.0	

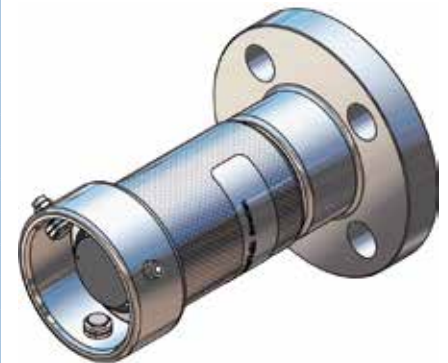


¹⁾ M = Male thread, BSP = EN ISO 228, NPT = ANSI B1.20.1
²⁾ Material: Al = Aluminium, Br = Brass, SS = Stainless Steel

³⁾ Standard seal FPM/FKM. Alternative materials, e.g. EPDM, Chemraz®, Kalrez®, NBR or HNBR on request.

1" (Ø 56 mm) Coupler – Flanged Inlet

Flange ¹⁾	Body Material ²⁾	Seal ³⁾	Weight ≈		Mann Tek Code No.			
		O-Ring	kg	lbs				
undrilled	Al	Standard: FPM/FKM (Viton®)	1,1	2.4	S118A1101			
DN 25 PN 10/16 Type A					S123A1101			
DN 25 PN 25/40 Type A					S124A1101			
¾" ASA 150					S149A1101			
1" ASA 150					S151A1101			
1" ASA 300					S152A1101			
DN 25 DIN 11864					S1151A1101			
undrilled	Br		Other on request.	1,6	3.5	S118A2201		
DN 25 PN 10/16 Type B						S123A2201		
DN 25 PN 25/40 Type B						S124A2201		
¾" ASA 150						S149A2201		
1" ASA 150						S151A2201		
1" ASA 300						S152A2201		
undrilled	SS			Other on request.	2,2	4.9	S118A4401	
DN 25 PN 10/16 Type B							S123A4401	
DN 25 PN 25/40 Type B							S124A4401	
¾" ASA 150							S149A4401	
1" ASA 150							S151A4401	
1" ASA 300							S152A4401	
undrilled	Titan				Other on request.	1,2	2.7	S118A6601
DN 25 PN 10/16 Type B								S123A6601
DN 25 PN 25/40 Type B		S124A6601						
1" ASA 150		S151A6601						
1" ASA 300		S152A6601						
DN 25 PN 10/16 Type B	Hastelloy	Other on request.				2,5	5.5	S123A7701
DN 25 PN 25/40 Type B								S124A7701
1" ASA 150								S151A7701
1" ASA 300								S152A7701
undrilled	PEEK		Other on request.			0,5	1.1	S118A9901
DN 25 PN 10/16 Type B								S123A9901
DN 25 PN 25/40 Type B								S124A9901
1" ASA 150								S151A9901
1" ASA 300								S152A9901



¹⁾ PN 10/16/25/40 = EN 1092 (types see page 44), ASA = ANSI B16.5 (150 o. 300 psi), 150 or 300 psi. DIN 11864 = DIN 11864-2 (aseptic flange)

²⁾ Material: Al = Aluminium, Br = Brass, SS = Stainless Steel

³⁾ Standard seal FPM/FKM. Alternative materials, e.g. EPDM, Chemraz®, Kalrez®, NBR or HNBR on request.

Viton® is a registered trademark of DuPont, DuPont Elastomers.