

HANSEN Beverage Products Sockets & Component Parts

Barb 90° End Connection

STAINLESS STEEL

GAS CONNECTION LIQUID CONNECTION

2-HG-RB

1/4" I.D. Hose



2-HL-RB

1/4" I.D. Hose

Flare 90° End Connection

STAINLESS STEEL

GAS CONNECTION LIQUID CONNECTION

2-HG-LLRA720

1/4" (1/16"-20MT)



2-HL-LLRA720

1/4" (1/16"-20MT)

Barb End Connection

STAINLESS STEEL

GAS CONNECTION LIQUID CONNECTION

2-HG-BN-B

1/4" I.D. Hose



2-HL-BN-B

1/4" I.D. Hose

2-HG-DN-B

3/8" I.D. Hose

2-HL-DN-B

3/8" I.D. Hose

Flare End Connection

STAINLESS STEEL

GAS CONNECTION LIQUID CONNECTION

2-HG720

1/4" (1/16"-20MT)



2-HL720

1/4" (1/16"-20MT)

Straight End Connection

MALE THREAD - STAINLESS STEEL

GAS CONNECTION LIQUID CONNECTION

2-HG15

1/2" MPT



2-HL15

1/2" MPT

2-HG20

3/8" MPT

2-HL20

3/8" MPT

Straight End Connection

FEMALE THREAD - STAINLESS STEEL

GAS CONNECTION LIQUID CONNECTION

2-HG16

1/4" FPT



2-HL16

1/4" FPT

Socket Head

STAINLESS STEEL

GAS CONNECTION LIQUID CONNECTION

LN-2HG-A

Socket Head only

LN-2HL-A

Socket Head only

LN-2HG-B

Socket Head with
4BSVAB Valve
Assembly



LN-2HL-B

Socket Head with
4BSVAB Valve
Assembly

LN-2HG-C

Socket Head with
4BSVAB Valve
Assembly and
W-2-HGL-1 Washer

LN-2HL-C

Socket Head with
4BSVAB Valve
Assembly and
W-2-HGL-1 Washer

Socket Valve Assembly

STAINLESS STEEL



4BSVAB

For use in Stainless Steel Sockets

Sockets

All dimensions in inches.



GUYSON INTERNATIONAL LIMITED

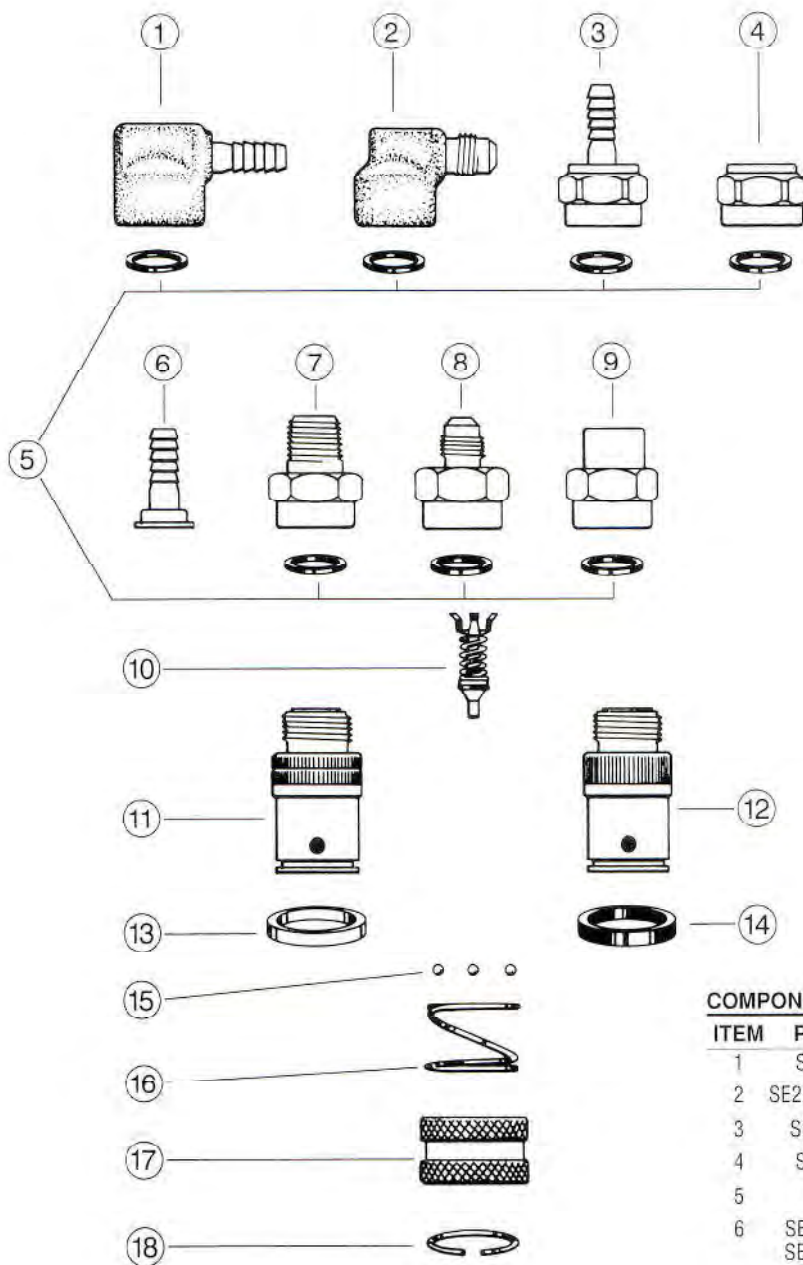
HOSE & COUPLINGS DIVISION

Southview Business Park, Guiseley, Leeds LS20 9PR Tel: 01943 870044 Fax: 01943 870066

e-mail: leeds@guyson.co.uk web: www.guyson.co.uk



HANSEN Beverage Products Sockets & Component Parts



COMPONENT PARTS FOR SOCKETS

ITEM	PART NO.	DESCRIPTION
1	SE2HGLRB	90° End Conn. Barbed 1/4" I.D. Hose
2	SE2HGLLRA720	90° End Conn. Stainless 1/4" Flare (7/16"-20MT)
3	SE2HGLBNB	Socket End for 1/4" I.D. Hose
4	SE2HGLDN	Nut only
5	W2HGL1	Washer, Rubber
6	SE2HGLBNB1	Stem only for 1/4" I.D. Hose
	SE2HGLDNB1	Stem only for 3/8" I.D. Hose
7	SE2HGL15	Male End Conn. 1/4" MPT x 11/16"-18FT
	SE2HGL20	Male End Conn. 3/8" MPT x 11/16"-18FT
8	SE2HGL720	Male End Conn. 1/4" Flare (7/16"-20MT) x 11/16"-18FT
9	SE2HGL16	Female End Conn. 1/4" FPT x 11/16"-18FT
10	4BSVAB	Socket Valve Assembly
11	2HG01A	Socket Body, Gas
12	2HL01A	Socket Body, Liquid
13	2HGL01B1	Identifying Color Band, Gas, White
14	2HGL01B2	Identifying Color Band, Liquid, Black
15	2104A302	Locking Balls (3 required)
16	3S05	Sleeve Spring
17	2HGL02	Sleeve
18	3S06	Lock Ring

All dimensions in inches.



GUYSON INTERNATIONAL LIMITED

HOSE & COUPLINGS DIVISION

Southview Business Park, Guiseley, Leeds LS20 9PR Tel: 01943 870044 Fax: 01943 870066

e-mail: leeds@guyson.co.uk web: www.guyson.co.uk



Stainless Steel Plugs

GAS CONNECTION LIQUID CONNECTION



2-KG-F16

1/4" FPT

2-KL-F16

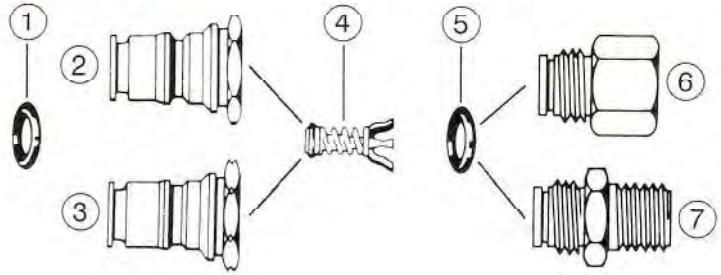
1/4" FPT

2-KG-F720

1/4" Flare (7/16"-20FT)

2-KL-F720

1/4" Flare (7/16"-20FT)



COMPONENT PARTS FOR 2-KG-F AND 2-KL-F PLUGS

ITEM	PART NO.	DESCRIPTION
1	902-9-292	O-ring
2	2KL01F	Plug Body, Liquid 3/8"-18FT
3	2KG01F	Plug Body, CO ₂ Gas 3/8"-18FT
4	VA2KGLFA	Plug Valve Assembly
5	902-7-292	O-ring
6	PE2KGF1601	1/4" FPT-for 2KGF16 Plug, Gas
	PE2KLF1601	1/4" FPT-for 2KLF16 Plug, Liquid
	PE2KGF72001	1/4" Flare-for 2KGF720 Plug, Gas
	PE2KLF72001	1/4" Flare-for 2KLF720 Plug, Liquid
7	PE2KGF1501	1/2" MPT-for 2KGF15 Plug, Gas
	PE2KLF1501	1/2" MPT-for 2KLF15 Plug, Liquid
	PE2KGF2001	3/8" MPT-for 2KGF20 Plug, Gas
	PE2KLF2001	3/8" MPT-for 2KLF20 Plug, Liquid

GAS CONNECTION LIQUID CONNECTION



2-KG-F15

1/4" MPT

2-KL-F15

1/4" MPT

2-KG-F20

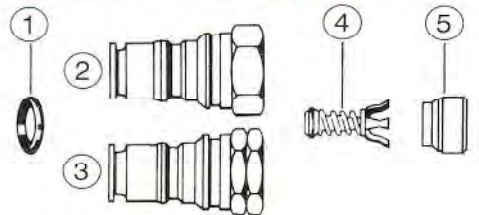
3/8" MPT

2-KL-F20

3/8" MPT

Stainless Steel Plugs

GAS CONNECTION LIQUID CONNECTION



COMPONENT PARTS FOR 2-KG-C AND 2-KL-C PLUGS

ITEM	PART NO.	DESCRIPTION
1	902-9-292	O-ring
2	2KL01C	Plug Body, Liquid
3	2KG01C	Plug Body, CO ₂ Gas
4	PVA3723B1	Plug Valve Assembly
5	NPI3723	Plug Insert, Plastic

2-KG-C

1 1/16"-18FT x .646 O.D.

Complete with O-ring, Valve Assembly and Plastic Insert

2-KL-C

3/4"-18FT x .658 O.D.

Complete with O-ring, Valve Assembly and Plastic Insert

All dimensions in inches.



GUYSON INTERNATIONAL LIMITED

HOSE & COUPLINGS DIVISION

Southview Business Park, Guiseley, Leeds LS20 9PR Tel: 01943 870044 Fax: 01943 870066

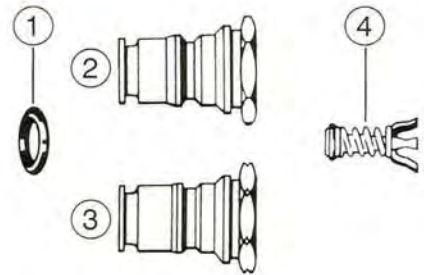
e-mail: leeds@guyson.co.uk web: www.guyson.co.uk



GAS CONNECTION

LIQUID CONNECTION

Stainless Steel Plugs



COMPONENT PARTS FOR 2-KG-F & 2-KL-F PLUGS

ITEM	PART NO.	DESCRIPTION
1	902-9-292	O-ring
2	2KL01F	Plug Body, Liquid
3	2KG01F	Plug Body, CO ₂ Gas
4	VA2KGLFA	Plug Valve Assembly

2-KG-F

$\frac{9}{16}$ "-18FT x .646 O.D. with VA2KGLFA Plug Valve Assembly and O-ring

2-KL-F

$\frac{5}{8}$ "-18FT x .658 O.D. with VA2KGLFA Plug Valve Assembly and O-ring

Plug Valve Assemblies



PVA3723B1

For 2-KG-C and 2-KL-C Plugs



PVA3723F

For P-Series Plugs



VA2KGLFA

For 2-KG-F and 2-KL-F Series

All dimensions in inches.



GUYSON INTERNATIONAL LIMITED

HOSE & COUPLINGS DIVISION

Southview Business Park, Guiseley, Leeds LS20 9PR Tel: 01943 870044 Fax: 01943 870066

e-mail: leeds@guyson.co.uk web: www.guyson.co.uk

