



ROTHSCHILD  
FOUNDATION

---

**Annual Review 2017/18**





# CONTENTS

**OVERVIEW OF THE YEAR....02**

**SUMMARY OF ACTIVITY....07**

**WADDESDON....11**

**MAJOR INITIATIVES....25**

*Getty Rothschild Fellowship, Golden Mede, The  
Illuminated River, Sustainable Farming*

**GRANTS....39**

**WADDESDON DIALOGUES....56**

**COLLECTIONS & ARCHIVES....60**

**BUTRINT....69**

**APPENDIX....72**

*Financial Summary, List of Grants, List of Trustees,  
List of Foundation Staff*



# OVERVIEW OF THE YEAR

---

The year under review saw a number of highlights, from exhibitions at Waddesdon Manor to grants for projects of local as well as national significance.

The Manor attracted increasing numbers of visitors, drawn by a wide range of events and exhibitions. Spanning 18th Century French culture to painting at the court of Elizabeth I, the exhibition programme demonstrated the depth and breadth of Waddesdon’s collections. Perhaps the most unexpected of all was *Creatures and Creations*, which brought together the Rothschilds’ role as scientists and naturalists with digital conceptual artist Platon Hadjimichalis, and international fashion designer Mary Katrantzou.

Foremost amongst a varied programme of events, the Christmas season presented a spectacular transformation of the main façade of the Manor through digital projection. This spectacle, together with an increased Christmas market offer, resulted in a significant increase in visitors for the festive period.

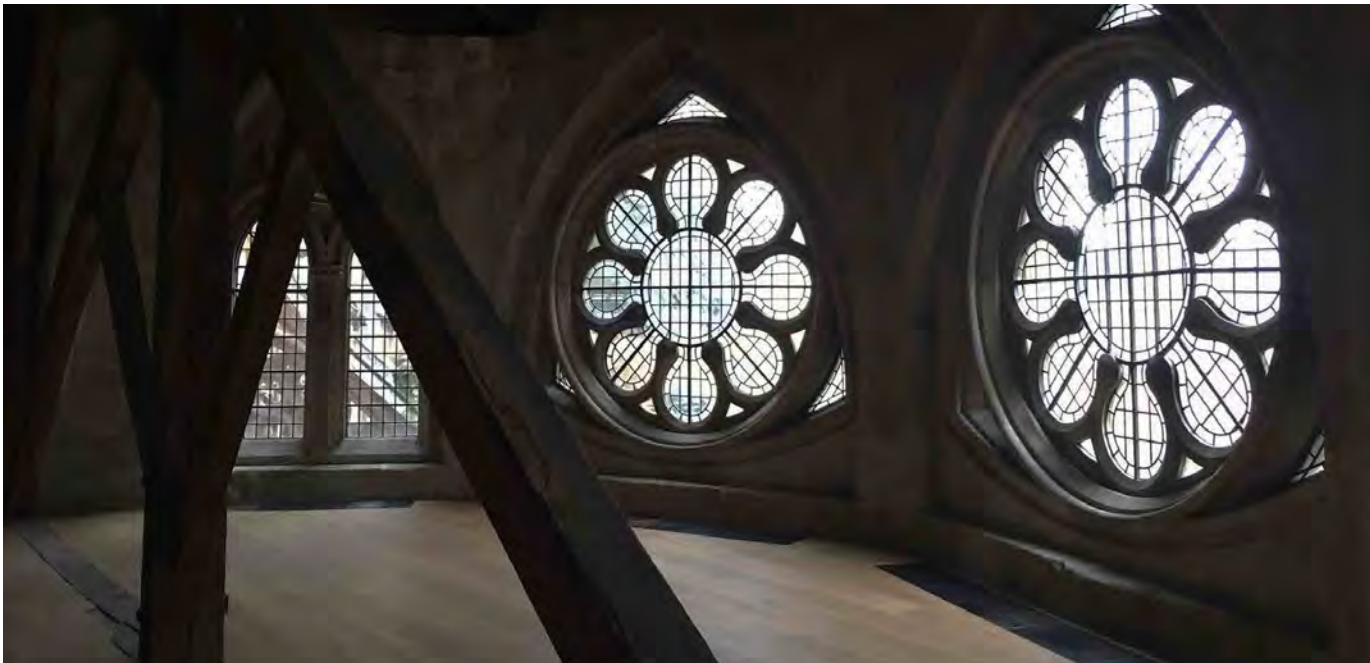
Elsewhere good progress continued across our major initiatives. Final bridge designs were completed for the Illuminated River; our work on sustainable farming was shared with Michael Gove at a roundtable held at Waddesdon, resulting in engagement with the project by Defra; work continued apace at Golden Mede, our housing development in Waddesdon, with

the first homes due to be delivered later in 2018; and we welcomed our second Getty Rothschild Research Fellow, Dr Thomas P Campbell.

In our grant-making, a number of notable awards were made to nationally significant projects including the new galleries at Westminster Abbey, as well as to key local projects in Buckinghamshire.

The period under review represented the third and final year of a Buckinghamshire-focused grants programme addressing older people and social isolation, young people and disadvantage and ex-offenders, with the final grants in this programme awarded during the year. It is likely that some of these themes, as they represent some of the most intractable challenges facing society, will be picked up in new ways in future.

**Fabia Bromovsky, Chief Executive,  
The Rothschild Foundation**



Opposite: (from top to bottom) Waddesdon Christmas market; Westminster Abbey’s triforium; *Power and Portraiture* exhibition  
Following pages: Waddesdon Manor’s South Front





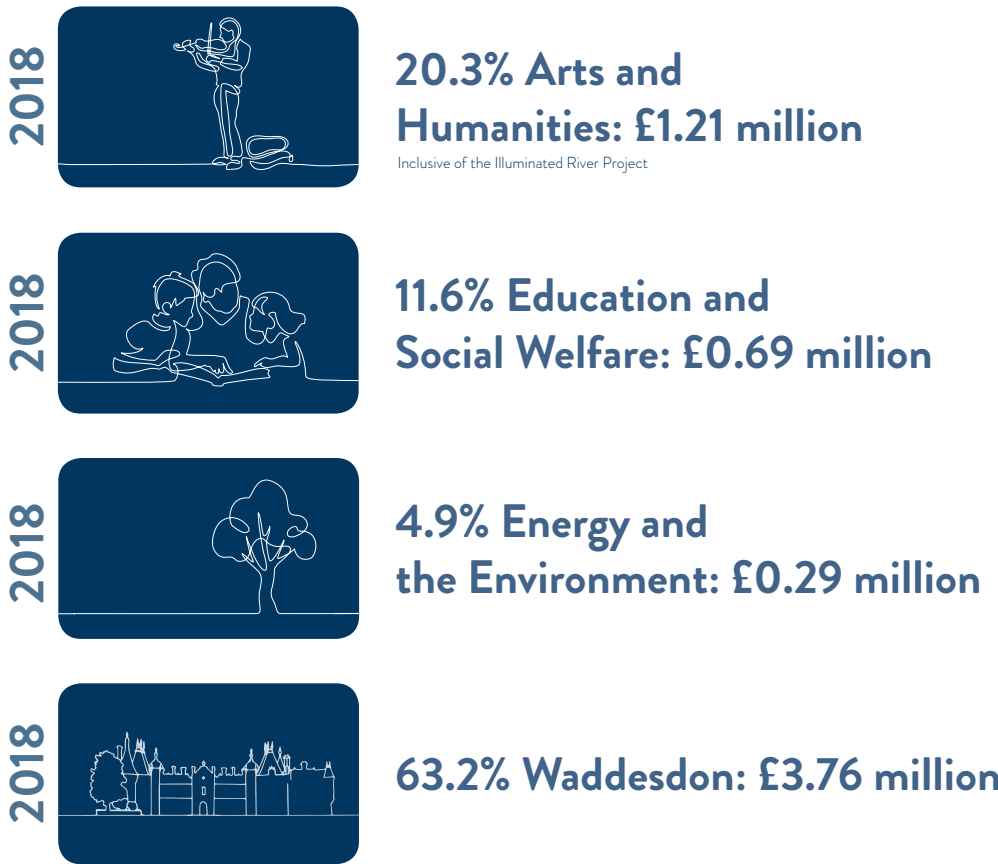
**The year under review saw a number of highlights, from exhibitions at Waddesdon Manor to grants for projects of local as well as national significance.**



"Notable awards  
were made  
to nationally  
significant  
projects"



# SUMMARY OF ACTIVITY



Opposite: Sarah Lucas *Perceval* outside Windmill Hill  
Following pages: Walking in the Waddesdon grounds.









"Waddesdon  
was announced  
as Winner  
of the Visit  
England Award  
for Excellence  
2018"

# WADDESDON

---

At the heart of The Rothschild Foundation's mission is the preservation, protection and improvement of Waddesdon Manor for the benefit and enjoyment of the public. The Foundation has continued to work to maintain Waddesdon's reputation as one of the leading heritage attractions in the United Kingdom, recognised when Waddesdon was announced as Winner of the Visit England Award for Excellence 2018. This success is evidenced in the increasing number of visitors enjoying what Waddesdon has to offer in the House, the Gardens and wider landscape.



2017: 423,000 visitors



2018: 468,000 visitors

Volunteers remain an essential part of the team:

 **327**  
volunteers

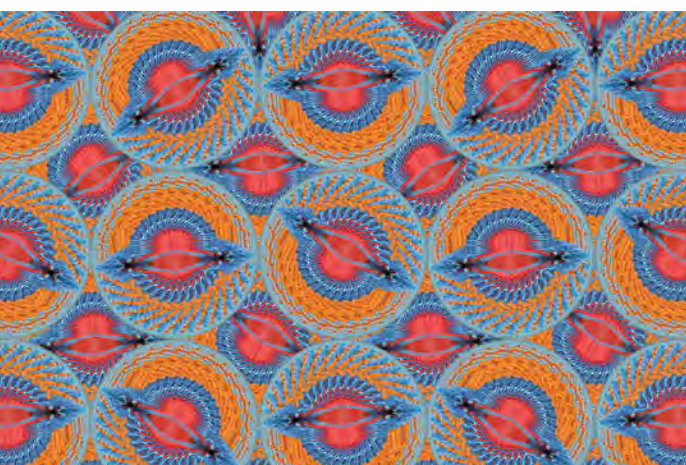
 **42,987**  
hours

Which is the equivalent of 22 permanent staff members:



*Highlights for the year are reviewed in the following pages (a fuller account can be found in Waddesdon Manor's Annual Review).*





## Exhibitions and Collections

Visitors during the year enjoyed a varied exhibition programme, which is designed to exemplify the depth and breadth of Waddesdon and its capacity to surprise, drawing on both the collections and material in the Archive. *Glorious Years: French calendars from Louis XIV to the Revolution* celebrated French 18th-century culture and history through almanacs - objects which were everywhere but regarded as ephemeral, yet collected avidly by Baron Ferdinand and have never before been on display.

June saw the opening of two further significant exhibitions. In the Coach House, *Creatures and Creations* drew together the Rothschilds and their role as scientists and naturalists with contemporary art inspired by Rothschild species and couture fashion in a collaboration with Platon Hadjimichalis, Mary Katrantzou and the Natural History Museum at Tring. *Power and Portraiture* explored painting at the court of Elizabeth I through an exceptional group of portraits on loan from the family, two of them newly attributed to Nicholas Hilliard and augmented by loans from HM the Queen and the National Portrait Gallery.

A number of acquisitions were made by the Foundation during the year, with many of these pieces for display at Waddesdon. These included a Coade stone bust of Elizabeth I, c. 1780, after John Bacon for inclusion in the exhibition *Power and Portraiture*; a mother-of-pearl fan, c. 1865, French, that belonged to Emma Louisa von Rothschild (1844-1935) who in 1867 married Nathaniel Mayer de Rothschild; and one of the gold boxes stolen in 2003 was recovered, an important late 18th-century Swiss neo-classical example, previously in Lord Rothschild's private collection, but which was transferred to the Foundation. More about acquisitions made during the year can be found on pages 64-65.

Previous page: Plantings on the Parterre in summer  
Opposite: Curator Dr Juliet Carey discussing *Power and Portraiture* at the press day. This page: (top to bottom) Detail of François-Gérard Jollain, Almanac *The august portraits of the first born sons of our kings that have had the title of Dauphin*, 1734; Curator Rachel Jacobs discussing the *Glorious Years* exhibition; Platon Hadjimichalis' *Casuarinus*; View of *Creatures and Creations* exhibition in the Coach House.







**Visitors during the year enjoyed a varied exhibition programme, which is designed to exemplify the depth and breadth of Waddesdon and its capacity to surprise.**





## Events

The annual summer event Feast attracted over 10,000 visitors, while our Chilli Festival and Colourscape also continued to be popular.

The highlight was the Christmas Season. The centrepiece of Winter Light was a collaboration with the Guildhall School of Music and Drama to create a full-scale digital projection, *Waddesdon Imaginarium*, inspired by the collections for the main façade of the Manor. Also outside, the Christmas Fair moved to the North Front for the first time, increasing its size and scope, which was a major contributor to footfall. Inside the Manor, the decorations were inspired by the animals to be found throughout the collections. This theme was also explored through a collaboration with artist Lauren Booth. *Electric Menagerie* took the form of a light trail linking the Aviary with the Stables, exploring aspects of the Rothschilds' natural history collections.



**2016: 149,000 Christmas visitors**



**2017: 181,000 Christmas visitors**

Previous page: Mary Katrantzou's couture designs in the *Creatures and Creations* exhibition at the Coach House.  
Opposite: (clockwise from top left) Visitors enjoying the *Electric Menagerie* exhibition; Entrance to Feast; Performers at Feast; Display at the Chilli Festival; Visitors writing to Father Christmas; *Waddesdon Imaginarium* projected on the North Front.







## Education

Waddesdon continues to develop its Education offer and the Schools and Learning programme supporting a wide range of learning. This includes core curriculum subjects and bespoke sessions, alongside a busy programme for families that runs throughout the year.

**Over 120 school groups  
(equating to 5,500 school visitors)**



## Maintenance and Conservation

A rolling programme of maintenance, conservation and repair of the Collection, House and Gardens continues. The Textile Conservation Centre has undertaken work on curtains from the Green Boudoir and Baron's Room and a number of paintings were cleaned and relined. We continued with our review and replacement of lighting and blinds inside the Collection to improve the experience for visitors and to make the most of technological improvements in lighting design. A number of important capital projects were undertaken during the year, notably the installation of a Panova Lift in the Front Hall to enable step free access to the Manor, a refurbishment of the shop, restaurant and Kitchen Corridor in the East Wing, and the replacement of the canopy structure for the Restaurant Terrace.

## Rothschild Waddesdon Limited

Rothschild Waddesdon Limited which operates the shops, restaurants, the Five Arrows Hotel and public and private events at Waddesdon, made a profit before tax of £229,000 (2017: £318,000) after a contribution to central overhead of £492,000 (2017: £480,000). All profits generated by trading activities at Waddesdon are solely to benefit the upkeep, development, repair and restoration of Waddesdon Manor.



**Gift aid donation from trading activities to the  
Foundation to support Waddesdon - £236,399  
(2017: £310,494).**

Previous page: The Christmas Market on the North Front  
Opposite: (clockwise from the top) Child painting a Maids Moreton Lantern; Chef preparing a dessert; Windmill Hill dressed for an event.  
Following pages: Waddesdon Manor's Green Boudoir.

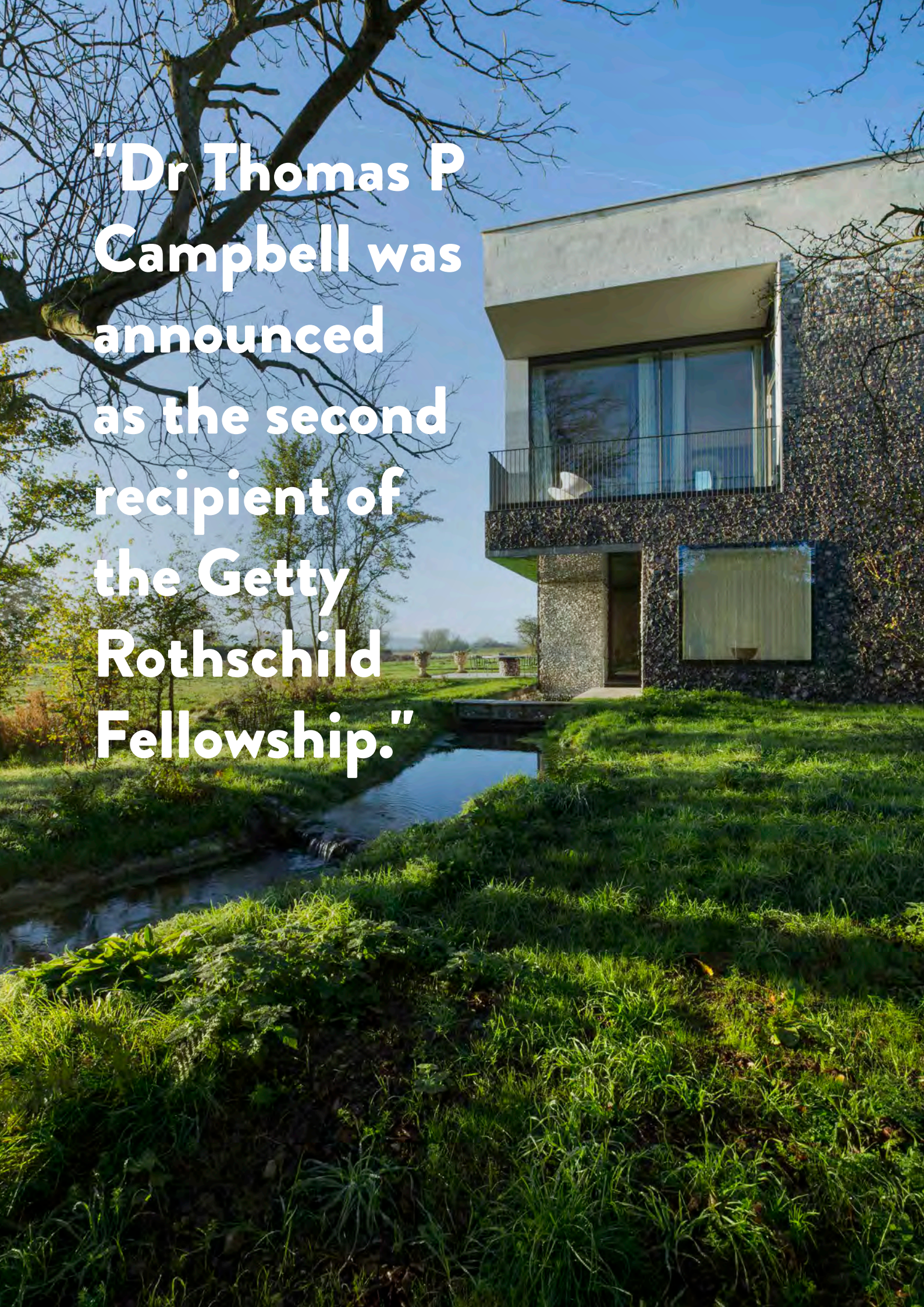






**At the heart of our mission is the  
preservation, protection and improvement  
of Waddesdon Manor for the benefit and  
enjoyment of the public.**





**"Dr Thomas P Campbell was announced as the second recipient of the Getty Rothschild Fellowship."**

## MAJOR INITIATIVES

---

The Foundation is involved with a number of major initiatives, reported on below. Unless specified, funding has already been approved for these in previous years.

### Getty Fellowship

The Fellowship was established in 2016 in partnership with the Getty Foundation, and aims to provide a researcher with the time to produce a key piece of work. It offers art historians, museum professionals, or conservators the opportunity to research and study for up to eight months at both the Getty in Los Angeles and Waddesdon and supports innovative scholarship in the history of art, collecting, and conservation using the collections and resources of both institutions. The Flint House, the RIBA award-winning Rothschild Foundation property, provides an exceptional environment in which the fellow resides while working at Waddesdon.

In July 2017, Dr Thomas P Campbell was announced as the second recipient of the Fellowship. As Director of The Metropolitan Museum of Art from 2009 to 2017, Dr Campbell pursued a ground-breaking agenda that combined scholarship with accessibility. He reinforced the Museum's excellence in its collections, exhibitions, publications and international engagement while reimagining the visitor experience both in the galleries and via an industry-leading digital presence. His project for the Fellowship will focus on the changing environment in which museums are operating and the ways art and cultural heritage can be used to promote mutual understanding. He said of his selection:

**"I am honoured to be named a Getty/Rothschild fellow and to be given the opportunity to devote the coming year to examine, first, the fundamental question of where the cultural sector is heading as it responds to various geo-political, economic and digital challenges. And second, the related question of how we can use art and culture as a gateway to promote understanding in an ever-more connected but ever-more divided world."**

Dr Campbell will also be registered as an Associate Fellow of the Art History Department at Oxford University, giving him access to all the university research resources while he is here. As part of this, he will deliver a seminar on his research to students and staff of the Department.

Opposite: Flint House



**Golden Mede**

The Rothschild family have a long history of developing Waddesdon, and Golden Mede represents the latest chapter in this engagement, with the Foundation embarking on a new housing project that accommodates a sustainable level of growth in Waddesdon whilst maintaining the village identity.

The development, designed by internationally renowned architects CF Moeller, marks a significant change in the architectural approach to contemporary British housing. Without simply imitating historical styles, Golden Mede draws on the quality and imagination of past design principles to create properties with a genuinely unique, modern character set among meticulously planned gardens and pathways. The aim is to create a sense of place within the development which is integrated into the wider Waddesdon community. This is supported by architectural excellence inspired by the best in Scandinavian design but shaped in the spirit of Waddesdon, and a commitment to the environment through building performance that goes beyond current regulations.

When the project was conceived, one aspiration was that it might support the local community in some way, perhaps through the provision of apprenticeships. To help realise this, the Foundation partnered with Volunteer It Yourself, an organisation that challenges young people to learn vocational trade skills through building projects. Young people are mentored by professional tradespeople and can gain City & Guilds qualifications through their participation, as well as access to employment and further training opportunities.

After supporting a pilot project in Aylesbury where Volunteer it Yourself enabled local young people to undertake a building refurbishment project for a local charity, the Foundation provided a grant to enable them to work on the Golden Mede site. They will be engaged to fit out a property, learning and applying trade skills to the highest professional standards demanded of a commercial development, under the guidance of their mentors, in key disciplines including carpentry and joinery, electrics, plastering, plumbing, tiling, and painting and decorating.

They will have the opportunity of working on a project not only with a high specification but gain experience of working within environmental sustainability criteria. Their programme is a supportive pathway for young people considering a structured apprenticeship towards the achievement of a vocational qualification.

**20 young people will undertake training on the Golden Mede site.**



Work to the Golden Mede site began during the year, with the first houses expected to be delivered in late 2018.

Opposite & Following Pages: Visualisations of Golden Mede.







**20 young people will undertake  
training on the Golden Mede site**





## The Illuminated River

The Illuminated River is one of the Foundation's most ambitious projects, a long term art commission on an unprecedented scale to light central London's bridges along the River Thames.

An independent charity, the Illuminated River Foundation (IRF), has been established to deliver the project and is working closely with the creative team, artist Leo Villareal and architectural practice Lifschutz Davidson Sandilands.

During the year Leo Villareal completed his final designs for all 15 of the bridges, including changes to Waterloo Bridge which were based on comments received from consultation with Historic England and other bodies, ready for planning submission in May 2018. Technical lighting tests on both Southwark and Millennium bridges were undertaken in February, attended by Millennium Bridge architects, Foster + Partners and Frances Morris, Director of Tate Modern, all of whom were very supportive.

Other activity in the year has involved consultation and pre-application meetings in preparation for submission of planning applications. These included drop in public events from Battersea in the west through to Shad Thames in the east, allowing key local issues and priorities to be identified and, where possible, ensuring that the evolving proposals take these into consideration.

The IRF has also consulted with the UK National Commission for UNESCO, since the Palace of Westminster and the Tower of London, which are World Heritage Sites, are within the wider project area. UNESCO has stated that the proposed lighting concept on Westminster Bridge will enhance the World Heritage Site.

The Rothschild Foundation has continued to support the IRF by providing support services. It has also worked with the IRF to identify projects that benefit the Illuminated River and the communities in the boroughs along its banks, for funding with small grants.

**"An independent charity, The Illuminated River Foundation (IRF), has been established to deliver the project and is working closely with the creative team."**

Opposite: (top to bottom) Artists Leo Villareal programming The Bay Lights in San Francisco; Visualisation of the Illuminated River Project  
Following pages: Visualisation of Chelsea Bridge for the Illuminated River.





**The Illuminated River is one of the Foundation's most ambitious projects, a long term art commission on an unprecedented scale to light central London's bridges along the River Thames.**



## Sustainable Farming

The Foundation continues to work with a core producer group (including both farmers and landowners), led by the Sustainable Food Trust (SFT) on the subject of Sustainable Land Management practice.

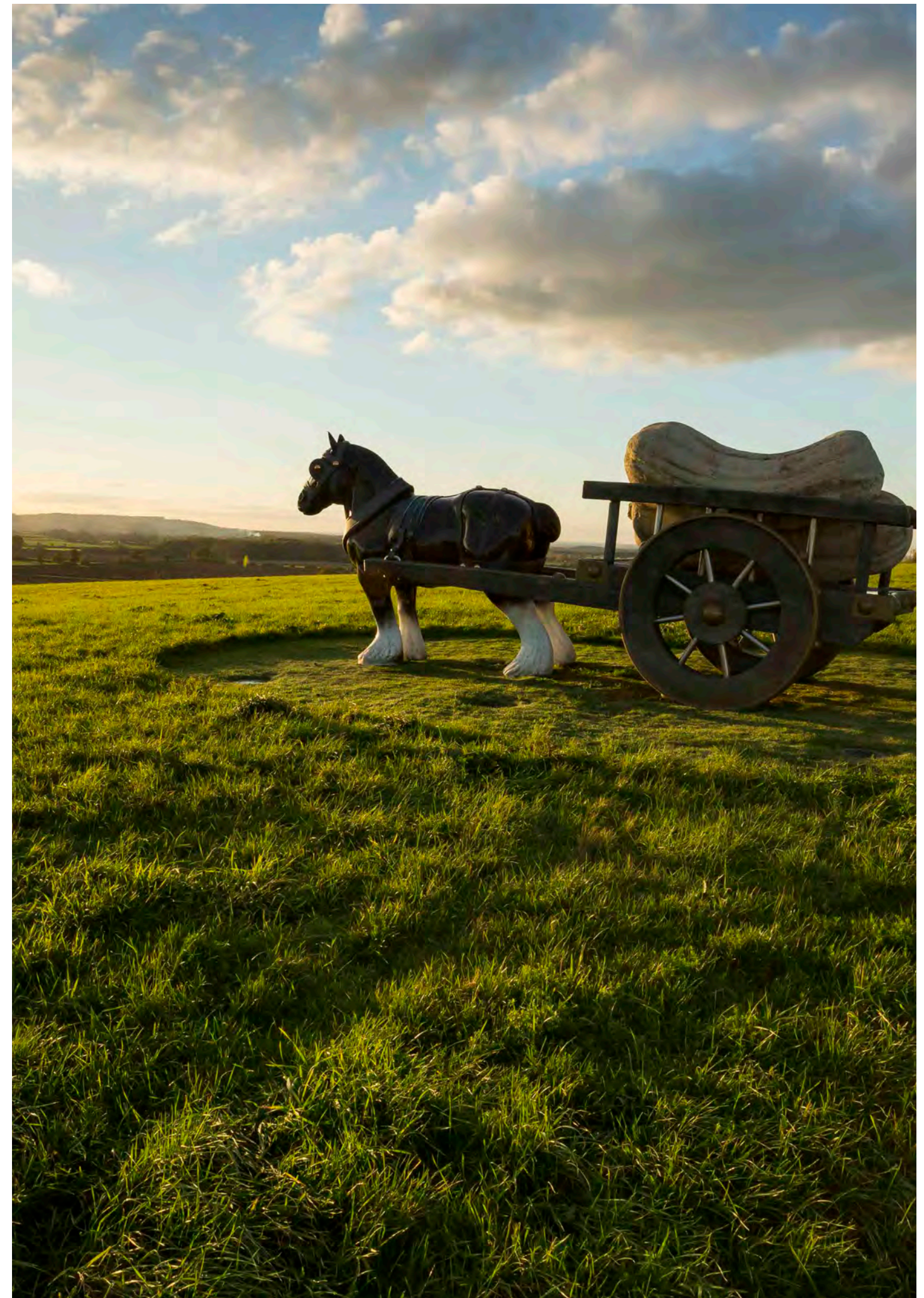
A grant from the Foundation has enabled the SFT to lead the next phase of the initiative as well as leveraging match funding from a number of sources, including the Sainsbury Family Charitable Trusts, Triodos Bank, The New Venture Fund and RH Southern Trust. There has also been interest from the Department for Environment, Food and Rural Affairs (Defra) in the initiative, following a roundtable with Michael Gove, Secretary of State for Environment, Food and Rural Affairs (see Waddesdon Dialogues for details, page 56).

Over the year the working group has been focused on identifying key metrics which, taken together, will provide a reliable and accurate assessment of the degree of sustainability of a farming system. In selecting these metrics, data is being prioritised which informs the management of land, is practical for farmers to gather and/or is already being collected by multiple agencies, including government and certification schemes. The group hope to be in a position to provide Defra with suggested sustainability metrics in early summer 2018, with the ambition of influencing the Agriculture Bill which is likely to be released in 2018, contributing to a legislative commitment to moving towards more sustainable farming practices.

The key motivation behind the project continues to be the desire to develop a framework which provides farmers and land owners with a manageable tool by which to accurately assess the baseline sustainability of a farming system and monitors improvements year on year. This will involve ensuring that the framework is compatible with different farming systems. The working group has commissioned sustainability assessment expert, Dr Harpinder Sandhu, a Senior Research Fellow at Flinders University, South Australia to undertake a series of case studies to test the framework with different farming systems across the UK, EU and US.

**"There has also been interest from the Department for Environment, Food and Rural Affairs (Defra) in the initiative, following a roundtable with Michael Gove, Secretary of State for Environment, Food and Rural Affairs."**

Opposite: Sarah Lucas *Perceval* outside Windmill Hill  
Following pages: View of the Dairy on the Waddesdon Estate











**"155 grants  
were awarded  
totalling almost  
£2.07 million"**

## GRANTS

---

155 grants were awarded totalling almost £2.07 million. Grants were made within four areas of interest: arts and humanities, the environment, education and social welfare. These different areas of grant making are exemplified through a number of brief case studies across the following pages. A full list of grants awarded over the year appears in the Appendix. Total grants were lower than in some previous years. This was due to a strategic review of the Foundation's Buckinghamshire grants programme that took place over the latter part of the year, during which time that grant programme was closed to new applications resulting in lower numbers of grants across the year.

### ARTS & HUMANITIES

As in previous years, the arts made up the largest portion of the Foundation's grant funding. Highlights include a major grant to Westminster Abbey towards the creation of new galleries in the triforium; the endowment of the annual Berlin Lectures at Wolfson College, Oxford; and a continuation of support for the Moving Image Fund, an Art Fund initiative supporting galleries outside of London to acquire moving image artworks. A number of grants in this area were concerned with issues of opportunity in the Arts, a theme of growing importance to the Foundation. Grants of note here included affordable work spaces for artists at Somerset House Studios and a photography project allowing disadvantaged young people from estates in London and Buckinghamshire to work with professional photographers through the charity Positive View.

**£ Grants totalling £1,095,212  
to 58 projects**

#### Hay Festival

Hay Festival brings together writers from around the world to debate and share stories at its festival in the beauty of the Welsh Borders. Hay celebrates great writing from poets and scientists, lyricists and comedians, novelists and environmentalists, and the power of great ideas to transform our way of thinking. Hay is committed to engaging people of all ages and delivers a year round programme of education and outreach in order to encourage reading, writing and critical thinking for young people. The Foundation's funding helped support the post of Education Manager, delivering events like the two-day Hay Festival Schools Programme which saw increased participation from schools. 227 schools attended, a 37% increase from the previous year. As part of wider outreach, The Scribblers Tour, which places author events in University campuses to increase access to higher

education for schoolchildren, reached 2,400 pupils. Hay is using digital technology to ensure that more schools across the UK are able to benefit from its high quality programmes, including live-streaming the Schools festival programme and developing online study aids such as the 'Hay Levels'.

#### Milton Keynes Arts Centre

Milton Keynes Arts Centre (MKAC) is a multidisciplinary arts centre providing a creative resource for local communities. The Foundation awarded a grant towards Mapping Heritage which engages young people in heritage and traditional crafts, allowing them to understand the significant role they played in the history of Buckinghamshire. Working with schools from three of Milton Keynes' most deprived wards, the two year programme of workshops and events aims to support young



people to learn new skills, gain confidence, and to develop a sense of pride and connection with their environment. Over the first year of the project three schools, including two pupil referral units, have been introduced to the traditional crafts of Silvermithing and Basket Weaving with plans to explore Buckinghamshire's lacemaking industry and crafts relating to Wycombe's furniture making heritage, in year two. Evaluation of the first year is already demonstrating the positive impact that participation is having on young people with teachers citing increases in attainment and attendance for individual participants. The legacy of the activity is also being developed with teachers interested in starting their own textiles and weaving club, and MKAC is developing a learning resource for teachers and educators to encourage this type of heritage inclusion in the classroom.

#### National Paralympic Heritage Trust

The National Paralympic Heritage Trust (NPHT) was established in 2015 to protect and share British Paralympic Heritage. Over the next six years NPHT is embarking on a significant project to establish an archive and collection of national and international importance. This includes the creation of a Heritage Centre at Stoke Mandeville Stadium, Aylesbury, where the Paralympic games were first held. The Foundation is supporting the development of the Heritage Centre. This includes building relationships with local communities and schools so that the Centre becomes embedded as an active and locally owned creative resource. Local schools have helped shape the designs for the Centre and assisted in devising tours with visual aids to ensure that the centre is accessible to those with Special Educational Needs.

#### Prince's Foundation

The Prince's Foundation equips professionals, graduates and the public with the skills they need to design, build and preserve sustainable communities. In 2017, the Rothschild Foundation granted an award to invest in the Building Craft Programme. Over eight months of applied study, the course

offers building craftspeople at the beginning of their careers the opportunity to enhance their design knowledge and experience in traditional and sustainable building crafts. From the Rothschild Foundation's Buckinghamshire base, support was targeted at developing local talent. Sam Rowland-Simms, a timber framer, was able to complete three placements as well as take part in the three week Residential Summer School. Sam also completed a four day Business Skills course, based at the Dumfries House Estate with the aim of understanding what is required to turn a heritage craft into a viable business. Sam commented "I feel I have the skills and experience to be a timber framer, whereas before I was unsure I had enough experience. I would like to say thank you for supporting me through the programme, I have learnt a great deal and very much enjoyed it."

#### Westminster Abbey Foundation

Westminster Abbey is an architectural masterpiece of the 13th to 18th centuries and is home to one of Europe's finest collections of art, textiles and manuscripts. Since 1066 it has been the place of coronations, the burial place of kings and queens, statesmen, notable writers, scientists, warriors and musicians. As one of the UK's leading visitor attractions, it welcomed more than 1.2 million visitors in 2016, as well as the thousands of worshipers who attend daily services. The Abbey used to display its collection in a small museum, formerly a conservation studio, so there was a need for a suitable, permanent, publically accessible space for its treasures to be exhibited. The fundraising campaign was launched to create the Queen's Diamond Jubilee Galleries in the Abbey's triforium, 70 feet above the nave floor and never before accessible to the public, as a gift to Her Majesty the Queen to celebrate and commemorate the 60th anniversary of her coronation. The new 9,600 square foot space will house four thematic galleries: The Abbey Buildings; Worship and Daily Life; The Abbey & the Monarchy; and The Nations Memory. It affords magnificent views of the interior of the Abbey and the Houses of Parliament.

Previous pages: View from the triforium of Westminster Abbey.

Opposite: (top to bottom) MK Arts Centre workshop; Hay Festival, Wales; Positive View programme participants at Waddesdon Manor.







## Somerset House Studios

Somerset House Studios, launched in October 2016, marks the final part of the transformation of Somerset House from government offices to a dynamic cultural centre. Once complete, the Studios will create affordable workspaces and a public platform for up to 100 artists, spanning theatre, dance, music, visual and digital arts with a particular focus on cross-disciplinary work. The Studios encompass 36,000 square feet of space in the New Wing of Somerset House and are unique in terms of affordability, location and scale. They will provide an exceptional artist development opportunity for emerging talent who will have access to each other's expertise and skills, and to the public through Somerset House's public programme. Somerset House Studios provides urgently needed creative spaces for artists, addressing the acute shortage of affordable workspace in the capital, as highlighted in a 2014 report by the Mayor of London which estimated that 30% of all artist studios across the city will disappear in three years. Artists can apply for studio space for up to two and half years and rent is capped at the London studio average.



**2016: 33 artists in residence**



**2017: 58 artists in residence**

**“Somerset House Studios provides urgently needed creative spaces for artists, addressing the acute shortage of affordable workspace in the capital, as highlighted in a 2014 report by the Mayor of London which estimated that 30% of all artist studios across the city will disappear in three years.”**

Opposite: Somerset House Studios resident artist in her studio. Below: Signage at Somerset House Studios. Following pages: Hay Festival audience.







**The Foundation's funding helped support the post of Education Manager, delivering events like the two-day Hay Festival Schools Programme which saw increased participation from schools. 227 schools attended, a 37% increase from the previous year.**





## ENVIRONMENT

During the year the Foundation's focus within its environmental programmes continued to be on charities working in the area of energy and the environment, specifically Ashden whose awards programme seeks to identify and support innovation in this field; and natural habit, with the continuation of a long-standing relationship with Fauna and Flora International. The Waddesdon Dialogues programme continued to have an environmental focus, with further collaboration with the Smith School of Enterprise & the Environment on the topic of Sustainable Finance and the Sustainable Food Trust for our research into the future for Sustainable Food and Farming (see page 34).



**Grants totalling £289,817  
to 12 projects**

### Dendrology Society

The International Dendrology Society was formed in 1952 to bring together dendrologists from all over the world. Its charitable aims are to promote the study of trees and shrubs and to conserve and protect those that are rare and endangered. The Foundation is supporting the development of Trees and Shrubs Online, an ambitious project to create a web-based encyclopaedia of woody plants grown in the United Kingdom, northern Europe and northern North America which is expected to become the primary source of reliable information on temperate woody plants for horticulturists and botanists. Over the first year of activity, an effective Content Management System has been developed and the site has steadily grown its community of users. The extensive horticultural detail available on the site is complemented by images from Belgian dendrologist Jan De Langhe whose collection of high resolution images of living specimens is one of the finest in the world.

**“The Foundation is supporting the development of Trees and Shrubs Online, an ambitious project to create a web-based encyclopaedia of woody plants grown in the United Kingdom, northern Europe and northern North America which is expected to become the primary source of reliable information on temperate woody plants for horticulturists and botanists.”**

Opposite: Walking at Waddesdon



## EDUCATION

The Foundation continued to support projects in the broad area of education, notably Action for Youth's new initiative to provide career experience for young people. This includes an element in the Arts and Heritage strand delivered by Waddesdon Manor. Other grants in this area included Art History Link Up, to deliver art history classes to pupils from disadvantaged backgrounds, and the School of Artisan Food to support a bursary for a refugee to undertake a Diploma in Artisan Baking.



**Grants totalling £289,817  
to 12 projects**

### Action4Youth

Action4Youth is a leading youth charity in Buckinghamshire and Milton Keynes providing experiences and activities which inspire children and young people. Their aim is to enable young people of all backgrounds and abilities to challenge themselves and work with others. As a membership body, Action4Youth represents and works closely with 80 youth clubs and organisations throughout the county giving guidance and support. They deliver the National Citizen Service, the government's flagship programme for 15 – 17 year olds, across Aylesbury Vale, and are the local operator for the Duke of Edinburgh's Award. In total, the organisation works with more than 25,000 young people annually. The Foundation provided funding toward a pilot project, the Inspiration Programme, which aims to broaden the horizons and experience of young people in Buckinghamshire. The programme will be a certified educational (NCFE accredited qualification), personal development course taught as part of the Citizenship curriculum. It will be made up of six pillars: arts and culture, business, the military, police and justice, the third sector and health and wellbeing. Each course theme will commence with an initial 'inspiration day' and then include immersive experiences alongside coursework. Waddesdon is partnering to co-deliver the arts and culture pillar of the programme.

### Artichoke

On Sunday 10th of June, women and girls in Belfast, Cardiff, Edinburgh and London came together as part of a celebratory mass participation artwork called *Processions*, to mark one hundred years of votes for women. Participants wore either green, white or violet, the colours of the Suffragette movement, to march through the city streets and create the visual effect of a vast flag. In the months leading up to the *Processions*, one hundred women artists were commissioned to work with organisations and communities across the UK to create one hundred centenary banners as part of an extensive public programme of creative workshops. With a grant from the Rothschild Foundation, *Processions* was brought to schools and youth groups across the nations through an informative education pack. It details the historical significance of the Suffragette movement and highlights contemporary relevance to democracy and gender equality, as well as providing guidance on how to sew, craft and create a banner. Young people in our local community at the Vale Federation schools, Aylesbury took part in a workshop to make a centenary banner for *Processions* and respond to this historic moment for women.



Opposite: (top to bottom) Artichoke's *Processions*; Art History LinkUp event participant.  
Following pages: Artichoke's *Processions* in London.



With a grant from the Rothschild Foundation, *Processions* was brought to schools and youth groups across the nations through an informative education pack.





## SOCIAL WELFARE

The Foundation continued to support charities working in the criminal justice sector, with grants made to: RAW Workshop, providing skills in woodwork to ex-offenders; the Irene Taylor Trust for their music in prisons programme; and Prison Radio Association, for radio production workshops at prisons local to Waddesdon. A developing interest was in the area of food inequality, expressed through grants to the Felix Project to rescue surplus food for redistribution, and to Hubbub to develop their Community Fridge initiative in Buckinghamshire.

**£ Grants totalling £407,854 to 66 projects**

### Felix Project

There is increasing awareness of the issue of food waste: 1.9 million tonnes of avoidable food waste is generated by the UK food industry each year. At the same time food insecurity is a significant problem, with almost 4 million children in the UK living in households that struggle to afford to buy enough fruit, vegetables, fish and other healthy foods. The Felix Project provides a free door-to-door service to collect surplus food from suppliers, and deliver it to charities. They currently work with around 200 charities and 200 suppliers helping disadvantaged adults and children get access to high quality food. The Foundation provided funding for a chiller van to allow the Felix Project to trial and develop a model of collecting the more perishable but high value food such as meat and fish that would otherwise go to waste.

### Fine Cell Work

In the past twelve months, Fine Cell Work has expanded their work both within prison and beyond. In September 2017, the organisation opened the Fine Works Hub, a new site where up to twelve ex-offenders are supported in a dedicated textiles workshop. Here, apprentices are able to complete accredited textiles courses and to take on paid and volunteering roles as production, stock and sales assistants. They work with an employment mentor and in some cases move on to further training in textiles skills such as upholstery, pattern cutting and curtain-making. In 2017 Fine Cell Work supported ten ex-prisoners, none of

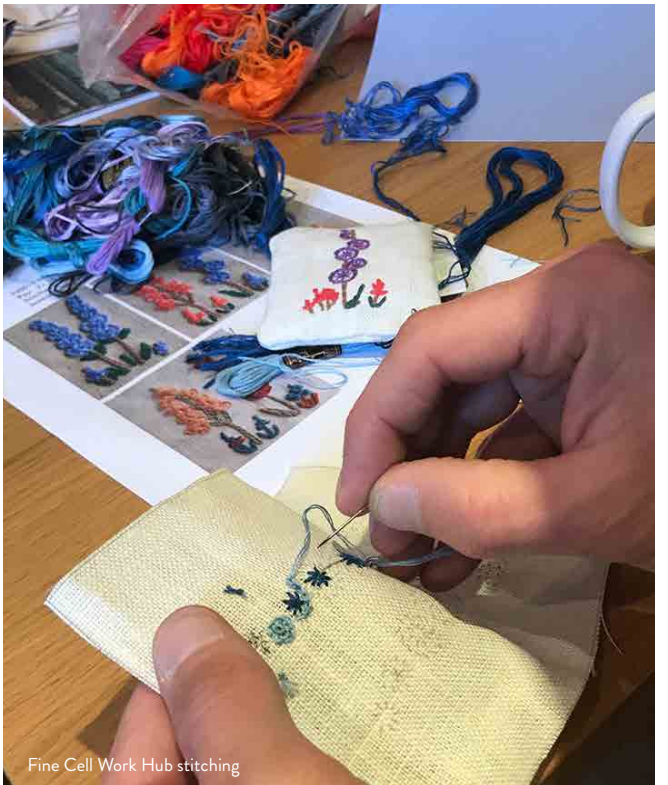
whom have reoffended and three of whom are now in employment. In addition to developing its new, through-the-gates work, Fine Cell Work has grown its operations within prison. The Rothschild Foundation supported dedicated embroidery groups in HMP Grendon, HMP Bullingdon and HMP The Mount, all of which are located close to the Foundation's base in Waddesdon. The prison groups are technically accomplished and self-sufficient stitchers. Some are working on commissions for private design studios as well as several important private commissions from renowned artists.

### Puzzle Centre Trust

The Puzzle Centre is one of very few specialist early intervention centres in the UK for pre-school aged children with autism and related disorders. It has nationally recognised expertise in the provision of specialised education, including speech and language therapies. The Centre works with around 50 children, 100 parents and 250 professionals each year. The Foundation's funding will help expand their work. Over the next five years, they are seeking to become a Centre of Excellence in Early Years Autism; benefiting at least 750 children, 2,000 parents and carers, and over 2,500 professionals. Central to the plans for growth is an expansion of their outreach services, which includes both an initial assessment and ongoing support for children and families at home or at school, as well as their training courses for professionals.



Puzzle Centre



Fine Cell Work Hub stitching



Felix Project in Greenford





## RAW Workshop

RAW Workshop is a fully equipped woodworking operation whose purpose is to engage, support and employ people who face disadvantage, prejudice and barriers to mainstream work. The workforce includes people with mental health illness, learning and physical health difficulties and various other forms of social or educational disadvantage. The trainees, employees and volunteers produce a range of high quality wooden items including garden furniture, chopping boards and bespoke office furniture which are sold to a range of clients including retailers, corporations, private customers, educational establishments and local authorities. The long-term aim of the workshop is to become financially self-sufficient through the sale of the wooden products made by employees and volunteers. In the past twelve months, the Rothschild Foundation's support has enabled RAW Workshop to engage with small groups of offenders from HMP Spring Hill who are nearing release and who have shown a determination to re-engage positively with society. Individuals are supported to learn a variety of skills in woodwork, carpentry, retail and customer service. In addition, RAW Workshop places great significance on the value of social skills which will enhance employability, such as team work, personal presentation and timekeeping. An example of their high-quality products can be found in Waddesdon village: the wooden bench situated outside the Golden Mede development, crafted from the old chestnut tree which was felled on site, was commissioned from RAW.

**“In the past twelve months, the Rothschild Foundation’s support has enabled RAW Workshop to engage with small groups of offenders from HMP Spring Hill who are nearing release and who have shown a determination to re-engage positively with society. Individuals are supported to learn a variety of skills in woodwork, carpentry, retail and customer service.”**

Opposite & below: RAW Workshop participants





# WADDES DON DIALOGUES

---

Thought-leadership, research and convening is a key means through which the Rothschild Foundation can engage with important topical issues. Much of this work is undertaken through the Waddesdon Dialogues programme, which uses Windmill Hill and Waddesdon to convene groups on issues in areas of interest to the Foundation, hosting seminars and debates and fostering dialogues and discussion. A particular focus over recent years has been the environment, especially the topic of sustainability.

## Roundtable with Michael Gove on sustainable farming

In December 2017 the Foundation hosted a roundtable event with Michael Gove, Secretary of State for Environment, Food and Rural Affairs (Defra). This presented a key point in the Foundation's Sustainable Metrics initiative where key collaborator The Sustainable Food Trust presented progress in developing a converged metrics framework for measuring the sustainability of farming practices with inputs from the wider working group. Since this work began three years ago, the British exit from the EU and the ongoing Common Agricultural Policy (CAP) review has presented opportunities to advocate for improved support for the development of sustainable food and farming practices. At the roundtable progress in developing a converged framework for sustainability assessment was presented, and Defra was invited to explore its potential in forming the basis of decision-making in relation to the allocation of public funds for post-Brexit farm support. The response to this was positive, with Michael Gove reiterating the Government's direction of travel towards a CAP which reflected a 'public money for public goods' agenda. Since then, the working group has continued its dialogue with Defra.

## The Waddesdon Club

In February 2018 Windmill Hill hosted the second Chatham House Waddesdon Club event. Acknowledging that achieving the Paris Agreement's goal of limiting temperature increases requires strong environmental leadership within economic policymaking. The 'Waddesdon Club' convenes future leaders in finance and economic ministries from across the globe with the aim to enhance understanding of climate and environmental challenges and ensure consideration within policy making at the highest level. Speakers at the event included representatives from Mercer, the European Bank for Reconstruction and Development, the European Climate Foundation and the London Business School who shared perspectives on important developments in the climate change agenda since the previous Waddesdon Club in 2015, as well as the practical policy challenges of managing the implications of the green economy transition.

Opposite: Windmill Hill Archive. Following pages: Sustainable Farming roundtable participants with Michael Gove at Windmill Hill.



"A particular  
focus over  
recent years  
has been the  
environment,  
especially  
the topic of  
sustainability"







# COLLECTIONS & ARCHIVES

---

The Rothschild Foundation has an extensive collection of art, both historic and contemporary. Much of the collection is on loan to Waddesdon Manor, though some pieces are displayed elsewhere such as at the Windmill Hill Archive Centre on the Waddesdon Estate. The Foundation has an active acquisitions programme, adding to the collections on a regular basis.

## Spencer House

It was the Rothschild Foundation's second year managing the historic collection at Spencer House. An intensive programme for the cleaning and conservation of the State Rooms and their contents was prepared with curatorial and conservation assistance offered by the team at Waddesdon. A programme of redecoration of the State Room ceilings, which will be spread out over four years, started in August with work completed in the Morning Room, Ante Room and Library that month. Conservation cleaning and relighting of the large Venetian lantern in the Main Staircase Hall was carried out which improved the appearance of the object and of the space considerably.

Royal Collection conservators worked on site to clean and inspect their Benjamin West loans. The long-term loan of Guiseppe Cades' painting *School of Athens* after Raphael from the Royal Academy was renewed and the loan of the library of Islamic and Arabic texts, on display in the Library, was extended.

Work began on a new edition of the Spencer House guide book, in partnership with Jarrold Publishing. New photography of the interior and interiors was commissioned to illustrate recent important loans and to complement the revised text.

Following the success of the three Benjamin West lectures in 2016, a new series was prepared for 2017 focusing on Waddesdon related themes. The lectures took place throughout the year and were very well attended. Rachel Jacobs, Curator at Waddesdon, delivered the first lecture in March about Waddesdon's exhibition *Glorious Years: French Calendars from Louis XIV to the Revolution* (1656-1795). In June, Dr Juliet Carey, Senior Curator at Waddesdon, spoke about *Faces for a House Party*, portraits at Waddesdon Manor. The year's final lecture, about Ferdinand de Rothschild's collection of 18th-century furniture at Waddesdon, was delivered by Dr Ulrich Leben, Associate Curator at Waddesdon.

In July 2017 Ruby Valentine joined the Foundation to work as Collections Assistant based at Spencer House. Her expertise is in preventive conservation acquired while working for English Heritage at Apsley House.

Opposite: The Dining Room, Spencer House  
Following pages: The Great Room, Spencer House



"It was the Rothschild Foundation's second year managing the historic collection at Spencer House"

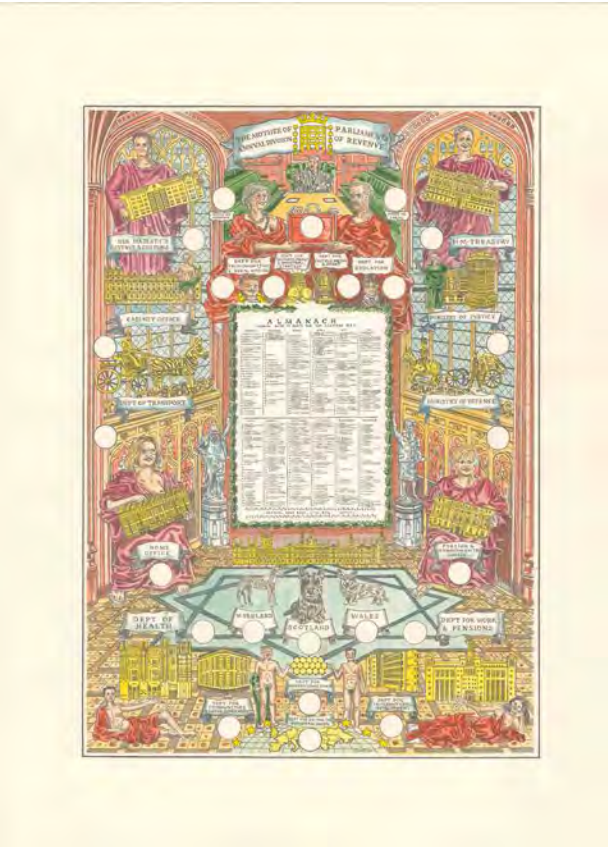






Acquisitions 2017/2018

Adam Dant; *The Mother of Parliaments: Annual Division of Revenue. A Print for the British Electorate*; 2017  
Hand tinted digital line print



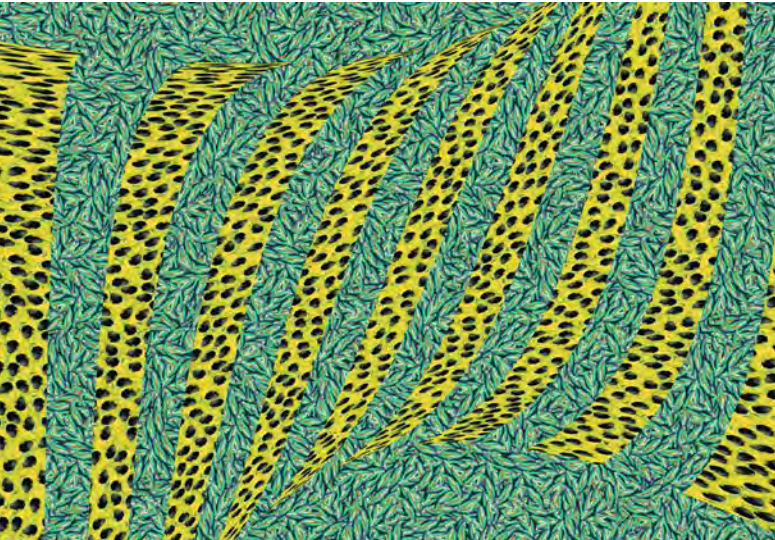
*The Mother of Parliaments: Annual Division of Revenue* is a contemporary almanac created by Adam Dant that takes its inspiration from the current state of British politics and the political life of Baron Ferdinand de Rothschild (1839-1893), Liberal MP for Aylesbury from 1885 to 1898, who built Waddesdon Manor.

Dant's almanac is a modern and subversive response to *Glorious Years: French Calendars from Louis XIV to the Revolution* exhibition which showcased a remarkable, but little known and never before displayed, collection of calendars (originally named 'almanacs'). The exhibition charts the evolution of these calendars from their golden period under the reign of Louis XIV, to the Revolution, when time itself was re-invented.

This print was commissioned for inclusion in the exhibition which took place in the Drawings Room at Waddesdon Manor, 22<sup>nd</sup> March - 29<sup>th</sup> October 2017. Following acquisition by the Rothschild Foundation it will be on permanent loan to Waddesdon.



Platon Hadjimichalis; *Gloriosa Rothschildiana* 11; 2017; *Madecassia Rothschildi* 55; 2017; *Phasianus Colchicus Rothschildi* 56; 2017



Duratrans transparencies inspired by specimens in the Walter Rothschild Collection at Tring

These digital transparencies were created for the *Creatures and Creations* exhibition which was displayed in the Coach House at Waddesdon 7<sup>th</sup> June to 29<sup>th</sup> October 2017. Walter Rothschild's spectacular collection of natural history specimens provided the inspiration for colourful virtual collages by Platon Hadjimichalis.

Platon's work takes details from high-resolution images of Rothschild species which he manipulates into abstract patterns. *Gloriosa Rothschildiana* 11 is based on the flowers of a climber from the lily family found in east Africa and Asia, *Madecassia Rothschildi* 55 on the iridescent colours of a north-American wood-boring beetle and *Phasianus Colchicus Rothschildi* 56 on the feathers of a Chinese wild pheasant.

Lauren Booth; *Party Parrot*; 2017. Neon and acrylic sculpture



This sculpture was made by the American mixed-media artist Lauren Booth for her exhibition *Electric Menagerie* at Waddesdon, which was part of the Winter Light programme from 11th November 2017 to 2nd January 2018. Booth made a number of pieces which were displayed throughout the grounds in response to the Rothschild's interest in natural history, and this piece was one of three that recreated the inhabitants of Baron Ferdinand's Aviary, and his custom of setting the birds out on perches for guests at his house parties to admire.

Opposite: Adam Dant *The Mother of Parliaments Annual Division of Revenue* 2017  
This page: (top to bottom) *Madecassia Rothschildi* 38; *Party Parrot*







# BUTRINT

---

**The Foundation continues to fund and manage The Butrint Foundation, in conjunction with The Linbury Trust (part of the Sainsbury Family Charitable Trusts).**

Butrint is a historic site of significant archaeological and environmental interest on the southwest coast of Albania. It became a World Heritage Site in 1992.

Since 1994 excavations have been undertaken by the Albanian Institute of Archeology and Institute of World Archaeology, University of East Anglia, Norwich (working under the auspices of the Butrint Foundation). Key areas of excavation include the Roman Forum, a sprawling Roman townhouse known as Triconch Palace, a late-antique baptistery, a Roman villa and late-antique church on the shore of Lake Butrint at Diaporit a major suburb of the Roman town located on the plain in front of the walled city.

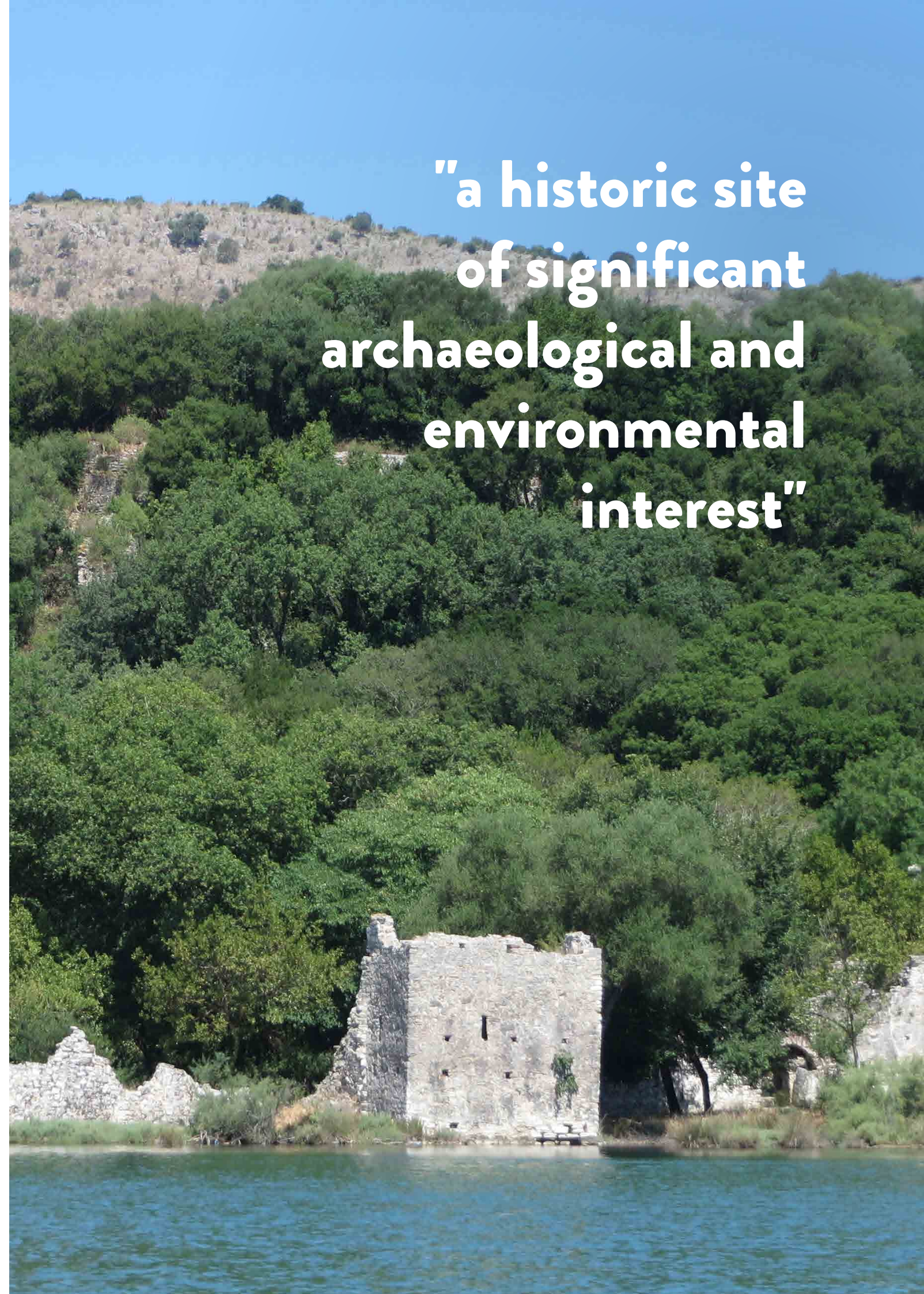
Previously, The Butrint Foundation has provided grants to individuals and agencies working at the site. Projects addressed at least one of the four principal objectives of the Foundation, which are research, conservation, training and enterprise. The Foundation has now ceased funding work at the site, as part of handing over responsibility for such work to Albanian-based organisations, in recognition of the increased professionalism locally in culture management, which will likely continue to develop with Albanian Government legislation in this area.

The Butrint Foundation continues to provide some funding to successor entities in Albania and to maintain a watching brief on development at the site.



Previous pages: The Parterre at sunrise, Waddesdon Manor. This page: Mosaic theatrical mask, Triconch Gallery, Butrint. Opposite: Conserved lakeside wall, Butrint. Following pages: Visitors outside Waddesdon Manor.

**"a historic site  
of significant  
archaeological and  
environmental  
interest"**









# APPENDIX

## FINANCIAL SUMMARY

	Income Fund 2018	Capital Funds 2018	Total 2018	Total 2017
	£	£	£	£
Donations and legacies	156,193	6,541,856	6,698,049	11,189,443
Income from investments	10,860,194	-	10,860,194	11,679,427
Income from Waddesdon Manor	3,417,830	-	3,417,830	3,505,069
<b>Income from Foundation activities and donations</b>	<b>14,434,217</b>	<b>6,541,856</b>	<b>20,976,073</b>	<b>26,373,939</b>
Income of Trading subsidiary	14,318,536	-	14,318,536	11,401,271
<b>Total Income</b>	<b>28,752,753</b>	<b>6,541,856</b>	<b>35,294,609</b>	<b>37,775,210</b>
Expenditure on raising funds	1,217,168	554,857	1,772,025	2,001,428
Expenditure on foundation activities	3,439,450	-	3,439,450	8,910,584
Expenditure on Waddesdon Manor	7,229,367	-	7,229,367	6,078,878
	<b>11,885,985</b>	<b>554,857</b>	<b>12,440,842</b>	<b>16,990,890</b>
Expenditure of trading subsidiary	<b>14,039,588</b>	<b>-</b>	<b>14,039,588</b>	<b>11,079,794</b>
<b>Total Expenditure</b>	<b>27,568,853</b>	<b>501,835</b>	<b>28,070,688</b>	<b>22,736,115</b>
Taxation	(66,845)	-	(66,845)	-
<b>Net (expenditure)/income income before gains &amp; losses</b>	<b>2,894,025</b>	<b>5,986,999</b>	<b>8,881,024</b>	<b>9,704,526</b>
Net Gains on Investments	-	11,690,484	11,690,484	90,028,681
<b>Net (expenditure)/income</b>	<b>2,894,025</b>	<b>17,677,483</b>	<b>20,571,508</b>	<b>99,733,207</b>
Other Losses	-	-	-	(11,070)
<b>Net movement in funds</b>	<b>2,894,025</b>	<b>17,677,483</b>	<b>20,571,508</b>	<b>99,722,137</b>
<b>Balances carried forward at 28 February 2018</b>	<b>2,894,025</b>	<b>652,080,856</b>	<b>654,974,881</b>	<b>634,403,373</b>

## INCOME AND EXPENDITURE ACCOUNT FOR THE YEAR ENDED 28 FEBRUARY 2018

## BALANCE SHEET AS AT 28 FEBRUARY 2018

	Group		Foundation	
	2018	2017	2018	2017
	£	£	£	£
<b>Fixed Assets</b>				
Investments	565,608,575	550,081,770	565,608,575	550,081,770
Investment properties	35,015,762	34,835,181	35,015,762	34,835,181
Investment in subsidiary undertaking	-	-	6,711,427	6,711,427
Intangible fixed assets	2	2	2	2
Heritage assets	34,634,860	34,552,098	34,634,860	34,552,098
Tangible fixed assets	12,596,076	12,564,839	11,730,419	11,848,928
	<b>647,855,275</b>	<b>632,033,890</b>	<b>653,701,045</b>	<b>638,029,406</b>
Current assets				
Stock and work in progress	10,338,079	6,497,584	54,229	30,298
Debtors	10,310,984	7,464,116	7,634,190	3,975,223
Cash at bank and in hand	4,817,322	4,683,505	3,007,706	2,025,633
	<b>25,466,385</b>	<b>18,645,205</b>	<b>10,696,125</b>	<b>6,031,154</b>
Current Liabilities				
<b>Creditors: amounts falling</b>				
- due within one year	(12,012,182)	(13,429,207)	(6,390,929)	(9,199,269)
	<b>13,454,203</b>	<b>5,215,998</b>	<b>4,305,196</b>	<b>(3,168,115)</b>
Net current assets/(liabilities)				
	<b>661,309,478</b>	<b>637,249,888</b>	<b>658,006,241</b>	<b>634,861,291</b>
Total assets less current liabilities				
	<b>(6,133,431)</b>	<b>(2,663,580)</b>	<b>(3,824,667)</b>	<b>(1,337,763)</b>
Net assets	<b>655,176,047</b>	<b>634,586,308</b>	<b>654,181,574</b>	<b>633,523,528</b>
<b>Funds</b>				
<b>Unrestricted capital fund</b>	<b>475,394,398</b>	<b>456,753,949</b>	<b>474,684,108</b>	<b>455,874,104</b>
<b>Restricted capital fund</b>	<b>6,840,989</b>	<b>6,794,047</b>	<b>6,846,988</b>	<b>6,794,047</b>
Unrestricted income fund	2,827,180	-	2,744,163	-
Unrestricted revaluation reserve	167,870,951	168,794,669	167,870,952	168,774,669
Restricted revaluation reserve	2,041,363	2,060,708	2,041,363	2,060,708
	<b>654,974,881</b>	<b>634,403,373</b>	<b>654,181,574</b>	<b>633,503,528</b>
Total capital funds				
Non controlling interest	201,166	182,935	-	-
<b>Total funds</b>	<b>655,176,047</b>	<b>634,586,308</b>	<b>654,181,774</b>	<b>633,503,528</b>



## EXPENDITURE ON FOUNDATION ACTIVITIES

	Grants Made	Direct	Support	Total	
	£	Costs	Costs	2018	2017
		£	£	£	£
<b>Grant making</b>					
- Arts & Humanities	1,095,212	-	-	<b>1,095,212</b>	6,020,528
- Education & Social Welfare	690,905	-	-	<b>690,905</b>	1,035,305
- Energy & Environment	289,817	-	-	<b>289,817</b>	432,543
<b>Costs of Grant Making</b>	-	-	384,650	<b>384,650</b>	344,779
<b>Grant of services to Illuminated River</b>	105,360	-	-	<b>105,360</b>	106,662
<b>Charitable Events</b>	-	3,266	-	<b>3,266</b>	96,868
	2,181,294	3,266	384,650	<b>2,569,210</b>	8,036,685
<b>Foundation management</b>	-	-	870,240	<b>870,240</b>	873,899
<b>Expenditure on Foundation activities</b>	2,181,194	3,266	1,254,890	<b>3,439,450</b>	8,910,584

## FUNDING OF WADDES DON

	2018	2017
	£	£
Income	(3,417,830)	(3,505,069)
Expenditure	7,229,367	6,078,878
Taxation	<b>(66,845)</b>	
<b>Total funding</b>	<b>3,744,692</b>	2,573,809

## DISTRIBUTION OF FUNDING AS BELOW

Size of Grant	No of Grants.	No of Grants.
	2018	2017
£100k+	3	12
£50k+	3	5
£10-£50k	38	54
<£10k	112	70
<b>Total</b>	<b>156</b>	<b>141</b>

Full accounts may be found under The Rothschild Foundation entry on the Charity Commission website:  
[www.charitycommission.gov.uk](http://www.charitycommission.gov.uk)



Visitors at Waddesdon Manor's South Front fountain



ARTS AND HUMANITIES

Westminster Abbey, London	£250,000
Serpentine Galleries, London	£100,000
Somerset House Studios, London	£50,000
Stowe House Preservation Trust, Buckinghamshire	£50,000
Butrint Foundation	£45,000
Art Fund (Moving Image Fund)	£40,000
Action for Youth, Aylesbury	£38,717
Yale Centre for British Art, London	£32,681
Hay Festival, Wales	£30,000
Positive View, London	£25,000
Factum Foundation, London	£25,000
Fine Cell Work, London	£21,480
Irene Taylor Trust , London	£21,000
Princes Foundation, London	£20,336
Milton Keynes Art Centre	£20,000
National Paralympic Heritage Trust,., Aylesbury	£20,000
Prison Radio Association, London	£20,000
Ashmolean Museum, Oxford	£20,000
Metropolitan Museum, USA	£19,447
Stratford East Theatre Royal, London	£15,000
New Mozart Orchestra, Buckinghamshire	£15,000
Orchestra Europa	£15,000
Museum of London	£13,500
Garsington Opera, Buckinghamshire	£12,000
British Museum, London	£11,900
Royal Drawing School, London	£10,000
The Stables, Milton Keynes	£10,000
Ashmolean Museum, Oxford	£10,000
Royal Academy of Arts, London	£10,000
Ensemble Correspondances, France	£10,000
Dramatic Need, South Africa	£10,000
China Exchange, London	£10,000
Corfu Heritage Foundation, London	£10,000
Sheerness Dockyard Preservation Trust, Kent	£10,000
Creative Industries Federation, London	£6,000
Art History Link Up, London	£6,000
Eton College, Berkshire	£6,000
Little Sparta Trust, Scotland	£5,000
Special Air Service Regimental Association (Hereford Cathedral)	£5,000
Soundabout, Oxfordshire	£5,000
Great Badminton Church Restoration Fund, Gloucestershire	£5,000
Sir Martin Gilbert Learning Centre, London	£5,000
Grit (formerly Youth at Risk), Hertfordshire	£5,000
Art Beyond Belief, Slough	£4,677
The Churches Conservation Trust, London	£4,500

Art Night, London	£4,000
British Museum, London	£3,788
Thames Festival Trust, London	£3,300
National Gallery, London	£3,000
Chickenshed, London	£3,000
Durrell Library of Corfu, Greece	£2,184
Art Fund, London	£2,078
British Sporting Art Trust, London	£2,000
Modern Art Oxford	£1,750
Royal Institute of British Architects, London	£1,000
British Film Institute , London	£600
Sub total	£1,114,212

ENVIRONMENT

International Dendrology Society, Herefordshire	£90,000
Sustainable Food Trust, Bristol	£90,000
Ashden, London	£30,000
Fauna and Flora International, London	£30,000
Chatham House, London	£25,000
Zoological Society London	£8,000
Red Squirrel Survival Trust, London	£5,000
The Woodland Trust, Lincolnshire	£5,000
Begawan, Indonesia	£4,000
Environmental Funders Network, UK	£1,000
Blue Marine Foundation, London	£1,000
Cikananga, Indonesia	£817
Sub total	£289,817

EDUCATION

Wolfson College, Oxford	£150,000
School of Artisan Food, Nottinghamshire	£26,360
Smith School, University of Oxford	£22,175
Cheek By Jowl, London	£15,000
Artichoke, London	£12,000
Volunteer It Yourself, Surrey	£10,000
Aylesbury Youth Motor Project	£10,000
Mulberry Bush School, Oxfordshire	£10,000
Stephen Spender Trust, Sussex	£9,700
Names not Numbers (Editorial Intelligence), London	£5,506
Royal Horticultural Society, London	£5,000
3 Pillars Project CIC, London	£5,000
The Reading List Foundation, Devon	£2,000
Wycliffe Hall, Oxford	£2,000
Stephen Spender Trust, Sussex	£1,980
Sub total	£286,723

SOCIAL WELFARE

Felix Project, London	£33,000
Raw Workshop, Oxfordshire	£30,000
Lindengate, Buckinghamshire	£20,000
Princes Centre, Buckinghamshire	£20,000
Puzzle Centre, Buckinghamshire	£20,000
Response, Oxfordshire	£20,000
Age Uk Dacorum, Hertfordshire	£19,687
Horses Helping People, Buckinghamshire	£14,912
DKMS UK	£10,000
Aylesbury Youth Action	£10,000
Back Up Trust, London	£10,000
Medical Detection Dogs, Buckinghamshire	£10,000
Rainbow Trust, Surrey	£10,000
Stoke Mandeville Spinal Research	£10,000
Enrych, Buckinghamshire	£9,000
Space, Aylesbury	£8,000
Requiem for Aleppo (Syria Relief), London	£5,000
The People's Trust, London	£5,000
Hubbub, London	£5,000
Jumbulance, Hertfordshire	£5,000
SeeSaw, Oxfordshire	£5,000
Youth Concern, Aylesbury	£5,000
Florence Nightingale Hospice Charity, Aylesbury	£5,000
Mind, Buckinghamshire	£5,000
Cancer Research UK	£5,000
Aylesbury Citizens Advice Bureau	£5,000
Missenden Walled Garden, Buckinghamshire	£5,000
NYAS, Wirral	£5,000
Playaway (PACE), Aylesbury	£5,000
Seeability, Oxfordshire	£5,000
Winslow Activity Club, Buckinghamshire	£5,000
National Osteoporosis Society	£5,000
Canon Collins Educational and Legal Assistance Trust	£5,000
DrugFAM, High Wycombe	£4,804
Make a Wish Foundation, Berkshire	£4,680
Tring Cricket Club	£4,050
Aylesbury Food Bank	£4,000
1st Brill Scout Group, Buckinghamshire	£4,000
BucksVision, Buckinghamshire	£4,000
Iain Rennie Grove House Hospice Care, Buckinghamshire	£4,000
Whizz Kidz, London	£4,000
Young Carers Bucks	£3,960
Princes Risborough Primary School	£3,000
Chilterns Multiple Sclerosis Centre	£3,000
Happy Days Children's Charity, Bedfordshire	£3,000
British Wireless for the Blind Fund, Kent	£2,800

Make a Special Kid Smile (MASKS), Buckinghamshire	£2,500
Meningitis Now, Gloucestershire	£2,000
Waddesdon Football Club	£2,000
Kindergarten of Sinies, Corfu	£2,000
Q:Alliance, Milton Keynes	£1,794
Long Crendon Day centre, Buckinghamshire	£1,395
Wilcot Village Hall, Wiltshire	£1,000
React, London	£1,000
Children of Heroes, London	£1,000
Corfu Animal Rescue Establishment (CARE)	£1,000
Devizes Budo Club	£500
Starlight Childrens Charity, London	£500
Ashgate Hospice, Chesterfield	£500
Greatwood, Wiltshire	£500
Brain Tumour Charity, Hampshire	£250
Cancer Research UK	£250
Winnicott Foundation, London	£250
Mind, Buckinghamshire	£250
Guide Association of Bucks International	£250
Make a Wish Foundation, Buckinghamshire	£22
Sub total	£407,854

OVERALL TOTAL	£2,098,605
---------------	------------

Grants relinquished during the year

Royal Academy of Arts	£19,000
Root Camp	£2,000
Rotary Club, Marlborough	£1,000
Turtle Key Arts	£671







**Trustees**

Lord Rothschild OM GBE (Chairman)  
The Hon. Hannah Rothschild  
The Hon. Beth Rothschild (retired during the year)  
The Hon. Emmy Freeman-Attwood  
Lord Ogilvy  
Dame Janet de Botton DBE  
The Marquess of Cholmondeley KCVO  
Francesco Goedhuis

**Foundation Staff**

Fabia Bromovsky, Chief Executive  
Claire Judd, PA to the Chief Executive  
Ben Johnson, Chief Financial Officer (left during the year)  
Caroline Winnicott, Chief Financial Officer (joined during the year)  
Jess Young, PA to the Chief Financial Officer  
Simon Fourmy, Head of Grants  
Claudia Schmid, Arts and Heritage Executive  
Leona Forsyth, Grants Manager (joined during the year)  
Ellie Stout, Grants Manager (joined during the year)  
Meghann Sherwood, Grants Assistant  
Cristina Alfonsin, Collections Manager  
Ruby Valentine, Collections Assistant (joined during the year)

Previous pages: View of Sarah Lucas' *Perceval* from the Windmill Hill Archive.  
Opposite: Waddesdon Manor Gardens in spring







INDEX OF PHOTOGRAPHY & CREDITS

Cover..... Chris Lacey © National Trust, Waddesdon Manor

Table of Contents..... Chris Lacey © National Trust, Waddesdon Manor

3..... Top - Chris Lacey © National Trust, Waddesdon Manor; Centre – © Claudia Schmid; Bottom – Derek Pelling © National Trust, Waddesdon Manor

4/5..... Chris Lacey © National Trust, Waddesdon Manor

6..... Chris Lacey © National Trust, Waddesdon Manor

8/9..... Chris Lacey © National Trust, Waddesdon Manor

10..... Chris Lacey © National Trust, Waddesdon Manor

12..... Top - Mike Fear © National Trust, Waddesdon Manor; Top centre - Derek Pelling © National Trust, Waddesdon Manor; Bottom centre – © Platon Hadjimichalis; Bottom - Derek Pelling © National Trust, Waddesdon Manor13..... North Front, Waddesdon Manor. Photo Chris Lacey © National Trust, Waddesdon Manor

13..... Derek Pelling © National Trust, Waddesdon Manor

14/15..... Derek Pelling © National Trust, Waddesdon Manor

16..... Top - Derek Pelling © National Trust, Waddesdon Manor; Bottom left - Chris Lacey © National Trust, Waddesdon Manor; Bottom right - Chris Lacey © National Trust, Waddesdon Manor

17..... © National Trust, Waddesdon Manor

18/19..... Chris Lacey © National Trust, Waddesdon Manor

21..... All – © National Trust, Waddesdon Manor

22/23..... Chris Lacey © National Trust, Waddesdon Manor

24..... Chris Lacey © National Trust, Waddesdon Manor

26 - 29..... © CF Moeller

30..... Both images – © Leo Villareal Studio

32/33..... © Leo Villareal Studio

35..... Chris Lacey © National Trust, Waddesdon Manor

36/37..... Chris Lacey © National Trust, Waddesdon Manor

36 - 37..... Overview of the proposed Illuminated River project on the Thames' bridges in London © Leo Villareal

38..... © Claudia Schmid

41..... Top – © MK Arts Centre; Centre - © Elisabeth Broekaer; Bottom – © Positive View

42 & 43..... © Dan Wilton

44/45..... © Elisabeth Broekaer

46/47..... Chris Lacey © National Trust, Waddesdon Manor

48..... Top – © Artichoke; Bottom - © Flo Brooks/Art History LinkUp

50/51..... © Artichoke

53..... Top left - © Keith McMahon / Venue View; Top right - © Fine Cell Work; Bottom - © Alex Lentati / Evening Standard

54 & 55..... © RAW Workshop Crew

57..... Chris Lacey © National Trust, Waddesdon Manor

58/59..... © National Trust, Waddesdon Manor

62/63..... © Spencer House & Jarrold Publishing

64..... © Adam Dant

65..... Top - © Platon Hadjimichalis; Bottom – © Lauren Booth

66/67..... Chris Lacey © National Trust, Waddesdon Manor

68..... © Butrint Foundation

69..... © Butrint Foundation

70/71..... Chris Lacey © National Trust, Waddesdon Manor

74..... Chris Lacey © National Trust, Waddesdon Manor

78/79..... Chris Lacey © National Trust, Waddesdon Manor

81..... Chris Lacey © National Trust, Waddesdon Manor

82..... Chris Lacey © National Trust, Waddesdon Manor

Opposite: Dining Room, Waddesdon Manor