



60 30 0 60 120
SCALE IN FEET

CENTERLINE CURVE TABLE					
CURVE	PI STATION	LENGTH	RADIUS	DELTA	TANGENT
C1	17+40.77	293.59	350.00	48°3'38"	156.05
C2	18+90.16	23.66	150.00	9°02'15"	11.85
C3	21+25.52	74.98	700.00	8°08'13"	37.52
C4	22+84.25	199.83	500.00	22°53'56"	101.27
C5	27+09.05	164.45	800.00	11°46'41"	82.52
C6	29+41.70	78.06	300.00	14°54'30"	39.25
C7	30+92.55	38.38	300.00	7°19'47"	19.22
C8	34+43.50	209.20	675.00	17°45'28"	105.44
C9	36+79.99	193.41	840.00	13°11'31"	97.13
C10	39+16.21	202.27	1000.00	11°39'22"	101.48
C11	60+90.38	65.42	40.00	93°42'16"	42.67
C12	10+80.36	8.94	50.00	10°14'49"	4.48
C13	11+28.38	13.83	55.00	14°24'41"	5.32

MONUMENT TABLE		
MONUMENT	COORDINATES	TYPE
M1	N 198396.53 E 1393580.04	AP
M2	N 198476.99 E 1393556.54	PC
M3	N 198638.45 E 1393526.92	PT
M4	N 198748.58 E 1393518.16	PC
M5	N 198827.31 E 1393522.16	PT
M6	N 198846.49 E 1393525.68	INTERSECTION
M7	N 198918.61 E 1393538.91	PC
M8	N 198956.70 E 1393543.41	PT
M9	N 199182.71 E 1393555.54	PC
M10	N 199386.56 E 1393588.68	PT
M11	N 199419.84 E 1393611.35	PC
M12	N 199591.13 E 1393700.23	PT
M13	N 199623.01 E 1393721.75	PC
M14	N 199776.12 E 1393851.05	PT
M15	N 198774.11 E 1393879.11	PC
M16	N 198824.16 E 1393887.02	PRC
M17	N 198832.28 E 1393812.52	PT
M18	N 198862.49 E 1393428.96	PC
M19	N 198864.50 E 1393405.41	PRC
M20	N 198982.22 E 1393145.79	PT
M21	N 199103.04 E 1393038.60	AP

CENTERLINE LINE TABLE		
LINE	BEARING	DISTANCE
L1	S41°20'53"E	102.94'
L2	S41°34'45"E	161.52'
L3	S80°36'09"E	98.03'
L4	S80°42'33"E	88.00'
L5	S63°56'50"E	213.03'
L6	N16°12'48"W	34.30'
L7	N16°17'07"W	83.82'
L8	N4°30'26"W	111.47'
L9	N10°24'04"E	92.82'
L10	N3°04'17"E	228.34'
L11	N20°49'42"E	35.61'
L12	N34°01'14"E	38.46'
L13	N45°36'36"E	227.47'
L14	S59°40'58"E	107.68'
L15	N26°36'48"E	34.93'
L16	N74°57'53"W	53.41'
L17	N55°58'47"W	57.66'
L18	N66°13'36"W	142.01'

SR 202

MILL POND ROAD

TOKUL ROAD

C:\working\proj\2012\123868-AL.dwg
Mar 16, 2015, 9:50am C:\winners

Issue No.	Description	Date	Drawn	Checked	Revised	Proj. Eng.



HDR
HDR Engineering, Inc.

606 Columbia Street NW, Suite 200
Olympia, WA 98501
(360) 570-4400
(360) 570-7253 - fax

Project Manager
BRAD SHEA
Designed
BRAD SHEA
Designed
Checked
JOSH METCALF
Drawn
KEVIN BURCH

**TOKUL ROAD
INTERSECTION IMPROVEMENTS**

WASHINGTON

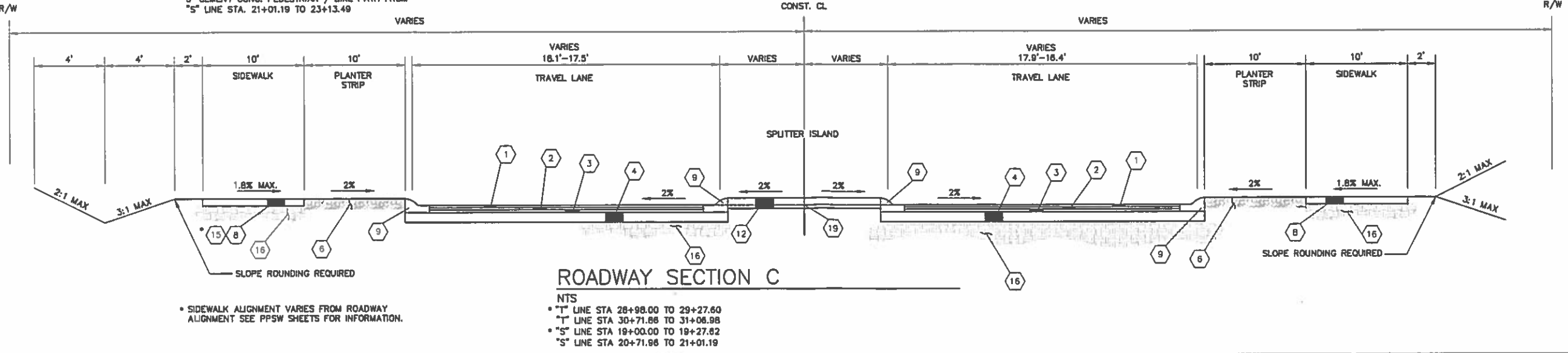
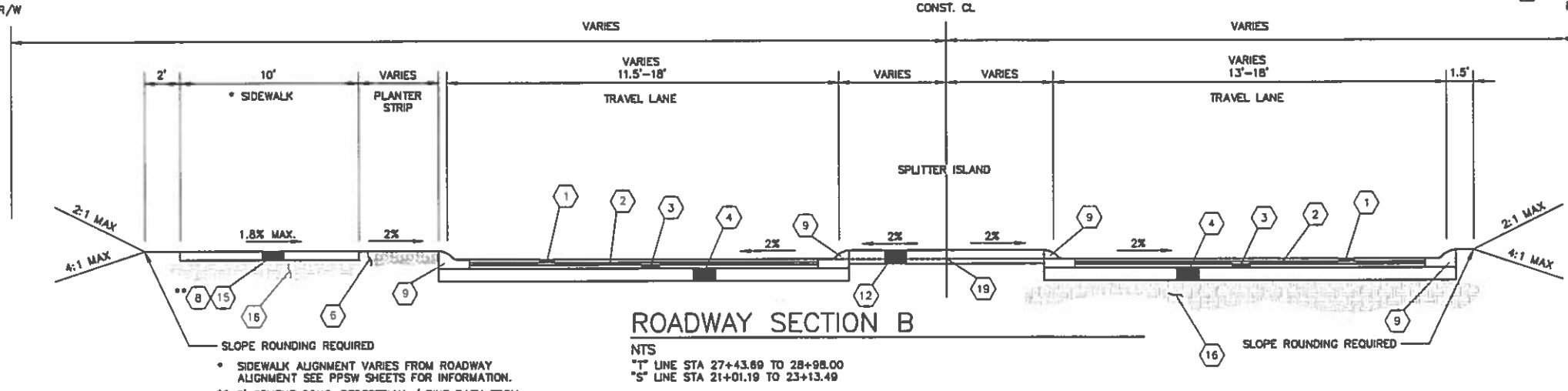
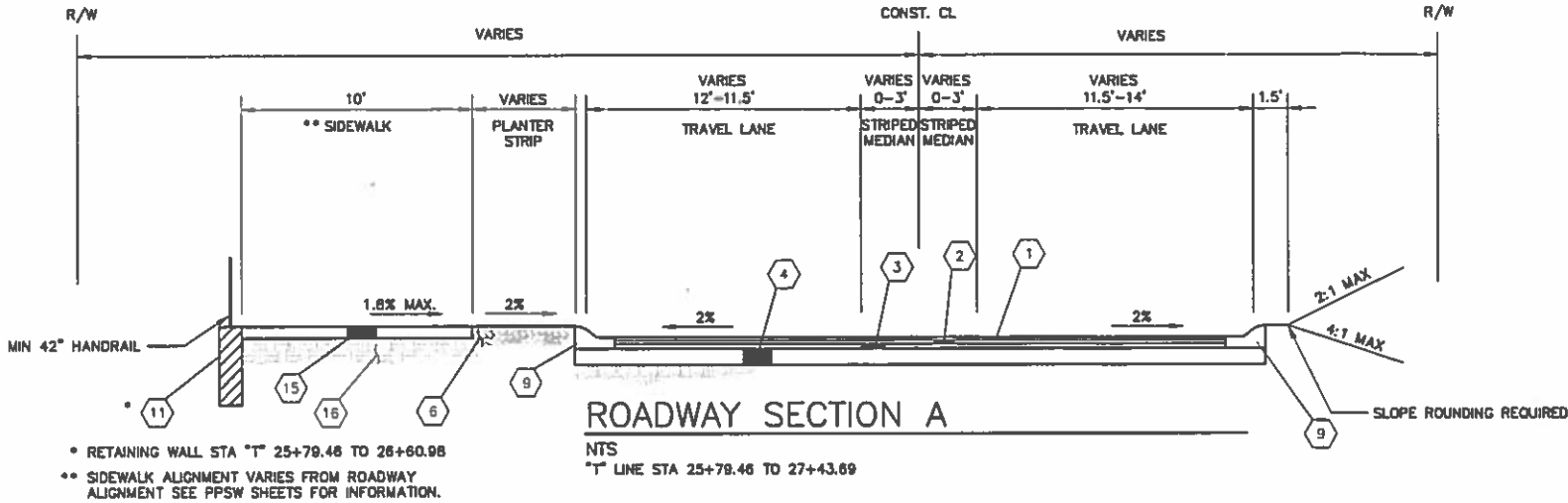
DECEMBER, 2012

ALIGNMENT PLAN

Date DECEMBER, 2012	Project No. 00000-033-868	Drawing No. AL-1	Issue 3
Scale SCALE AS SHOWN	File Name 33868-AL.dwg		99

SURFACING LEGEND

- 1 HMA CL. 1/2", PG 58-22
 - 2 HMA CL. 1/2", PG 58-22
 - 3 CRUSHED SURFACING TOP COURSE
 - 4 CRUSHED SURFACING BASE COURSE
 - 5 CRUSHED SURFACING BASE COURSE
 - 6 PLANTER STRIP
 - 7 ROUNDABOUT CENTRAL ISLAND CEMENT CONCRETE CURB W/ 12" RADIUS
 - 8 CEMENT CONCRETE COMBINED PEDESTRIAN/BIKE PATH
 - 9 ROUNDABOUT CEMENT CONCRETE CURB AND GUTTER
 - 10 LANDSCAPED ISLAND
 - 11 STRUCTURAL EARTH WALL
 - 12 PATTERNED/PIGMENTED CEMENT CONCRETE SPLITTER ISLAND
 - 13 CONSTRUCT DRAINAGE DITCH AS SHOWN
 - 14 PATTERNED/PIGMENTED CEMENT CONCRETE TRUCK APRON
 - 15 ASPHALT CONCRETE PED/BIKE PATH
 - 16 COMPACTED SUBGRADE
 - 17 ROUNDABOUT TRUCK APRON CEM. CONC. CURB AND GUTTER
 - 18 PCCP
 - 19 PROFILE GRADE POINT
- 0.17' MIN COMPACTED DEPTH
0.25' MIN COMPACTED DEPTH
0.50' MIN COMPACTED DEPTH
0.85' MIN COMPACTED DEPTH
0.30' MIN COMPACTED DEPTH
SEE LANDSCAPE PLANS FOR DETAILS
PER WSDOT STD PLAN NO. F-10.12-00
0.33' CONCRETE OVER 0.17' CSTC
- SEE DWG NO. DT-9 FOR DETAILS
SEE DWG NO. DT-10 & DT-11 FOR DETAILS
- SEE DWG NO. DT-1 & DT-3 FOR DETAILS
SEE SHEET DT3 AND PPSW SHEETS FOR DETAILS
- SEE DWG NO. DT1 FOR DETAILS
(WSDOT STD. PLAN NO. F-10.12-00
0.80' CONCRETE OVER 0.30' CSTC



C:\projects\wsp\m24121\33868-XS1.dwg
12/18/2012 2:15pm - C:\summers

Rev.	Description	Date	Drawn	Checked	Revised	Project



HDR
HDR Engineering, Inc.
606 Columbia Street NW, Suite 200
Olympia, WA 98501
(360) 570-4400
(360) 570-7253 - fax

Project Manager	BRAD SHEA
Designed	BRAD SHEA
Checked	JOSH METCALF
Drawn	KEVIN BURCH

**TOKUL ROAD
INTERSECTION IMPROVEMENTS**

WASHINGTON

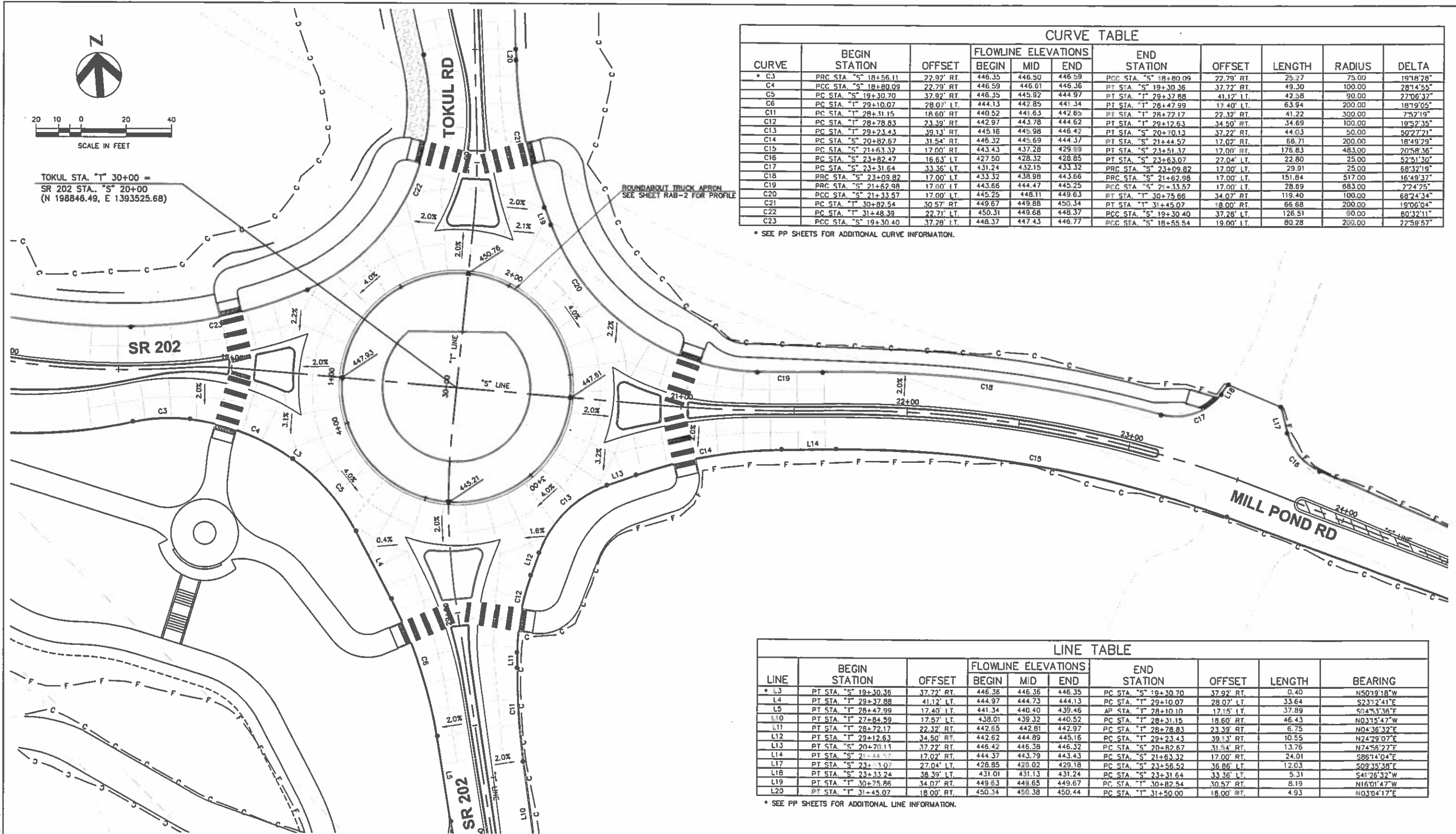
DECEMBER, 2012

TYPICAL ROADWAY SECTIONS

Date	DECEMBER, 2012	Project No.	00000-033-868	Drawing No.	XS-1
Scale	SCALE AS SHOWN	File Name	33868-XS1.dwg	Sheet	4/99



TOKUL STA. "T" 30+00 =
SR 202 STA. "S" 20+00
(N 198846.49, E 1393525.68)



CURVE TABLE										
CURVE	BEGIN STATION	OFFSET	FLOWLINE ELEVATIONS			END STATION	OFFSET	LENGTH	RADIUS	DELTA
			BEGIN	MID	END					
C3	PRC STA. "S" 18+56.11	22.92' RT.	446.35	446.50	446.59	PCC STA. "S" 18+80.09	22.79' RT.	29.27	75.00	19°18'28"
C4	PCC STA. "S" 18+80.09	22.79' RT.	446.59	446.61	446.36	PT STA. "S" 19+30.36	37.72' RT.	49.30	100.00	28°14'55"
C5	PC STA. "S" 19+30.70	37.92' RT.	446.35	445.92	444.97	PT STA. "T" 28+37.88	41.12' LT.	42.58	90.00	27°06'32"
C6	PC STA. "T" 28+37.88	41.12' LT.	444.13	442.85	441.34	PT STA. "T" 28+47.99	17.40' LT.	63.94	200.00	18°19'05"
C11	PC STA. "T" 28+31.15	18.60' RT.	440.52	441.63	442.65	PT STA. "T" 28+72.17	22.32' RT.	41.22	300.00	7°52'19"
C12	PC STA. "T" 28+72.17	22.32' RT.	442.97	443.78	444.62	PT STA. "T" 29+12.63	34.50' RT.	34.69	100.00	19°32'35"
C13	PC STA. "T" 29+12.63	34.50' RT.	445.16	445.98	446.42	PT STA. "S" 20+70.13	37.22' RT.	44.03	50.00	50°27'21"
C14	PC STA. "S" 20+70.13	37.22' RT.	446.32	445.69	444.37	PT STA. "S" 21+44.57	17.02' RT.	66.71	200.00	18°49'29"
C15	PC STA. "S" 21+44.57	17.02' RT.	443.43	437.28	429.89	PT STA. "S" 21+51.37	17.00' RT.	176.83	483.00	20°58'36"
C16	PC STA. "S" 21+51.37	17.00' RT.	427.50	428.32	428.85	PT STA. "S" 23+63.07	27.04' LT.	22.80	25.00	52°51'30"
C17	PC STA. "S" 23+63.07	27.04' LT.	431.24	432.15	433.32	PRC STA. "S" 23+09.82	17.00' LT.	29.91	25.00	68°32'19"
C18	PRC STA. "S" 23+09.82	17.00' LT.	433.32	438.98	443.66	PRC STA. "S" 21+62.98	17.00' LT.	151.84	517.00	16°49'37"
C19	PRC STA. "S" 21+62.98	17.00' LT.	443.66	444.47	445.25	PRC STA. "S" 21+33.57	17.00' LT.	28.69	683.00	2°24'25"
C20	PRC STA. "S" 21+33.57	17.00' LT.	445.25	448.11	449.63	PT STA. "T" 30+75.86	34.07' RT.	119.40	100.00	68°24'34"
C21	PT STA. "T" 30+75.86	34.07' RT.	449.63	449.88	450.34	PT STA. "T" 31+45.07	18.00' RT.	66.68	200.00	19°06'04"
C22	PT STA. "T" 31+45.07	18.00' RT.	450.34	449.68	448.37	PCC STA. "S" 19+30.40	37.28' LT.	126.51	90.00	80°32'11"
C23	PCC STA. "S" 19+30.40	37.28' LT.	448.37	447.43	446.77	PCC STA. "S" 18+55.54	19.00' LT.	80.28	200.00	22°59'57"

* SEE PP SHEETS FOR ADDITIONAL CURVE INFORMATION.

LINE TABLE									
LINE	BEGIN STATION	OFFSET	FLOWLINE ELEVATIONS			END STATION	OFFSET	LENGTH	BEARING
			BEGIN	MID	END				
L3	PT STA. "S" 19+30.36	37.72' RT.	446.36	446.36	446.35	PC STA. "S" 19+30.70	37.92' RT.	0.40	N50°19'18"W
L4	PT STA. "T" 28+37.88	41.12' LT.	444.97	444.73	444.13	PC STA. "T" 29+10.07	28.07' LT.	33.64	S23°12'41"E
L5	PT STA. "T" 28+47.99	17.40' LT.	441.34	440.40	439.46	AP STA. "T" 28+10.10	17.15' LT.	37.89	S04°53'36"E
L10	PT STA. "T" 27+84.59	17.57' LT.	438.01	439.32	440.52	PC STA. "T" 28+31.15	18.60' RT.	46.43	N03°15'47"W
L11	PT STA. "T" 28+72.17	22.32' RT.	442.65	442.81	442.97	PC STA. "T" 28+78.83	23.39' RT.	6.75	N04°36'32"E
L12	PT STA. "T" 28+72.17	22.32' RT.	442.62	444.89	445.16	PC STA. "T" 29+23.43	39.13' RT.	10.55	N24°29'07"E
L13	PT STA. "S" 20+70.13	37.22' RT.	446.42	446.38	446.32	PC STA. "S" 20+82.67	31.54' RT.	13.76	N74°56'27"E
L14	PT STA. "S" 21+44.57	17.02' RT.	444.37	443.79	443.43	PC STA. "S" 21+63.32	17.00' RT.	24.01	S86°14'04"E
L17	PT STA. "S" 23+63.07	27.04' LT.	428.85	429.02	429.18	PC STA. "S" 23+56.52	36.86' LT.	12.03	S09°35'38"E
L18	PT STA. "S" 23+63.07	27.04' LT.	431.01	431.13	431.24	PC STA. "S" 23+31.64	33.36' LT.	5.31	S41°26'32"W
L19	PT STA. "T" 30+75.86	34.07' RT.	449.63	449.65	449.67	PC STA. "T" 30+82.54	30.57' RT.	8.19	N16°01'47"W
L20	PT STA. "T" 31+45.07	18.00' RT.	450.34	450.38	450.44	PC STA. "T" 31+50.00	18.00' RT.	4.93	N03°04'17"E

* SEE PP SHEETS FOR ADDITIONAL LINE INFORMATION.

C:\projects\king\ssd\ssd\21321\33868-rab.dwg
Mar 18, 2013, 15:00 - CSummers

Issue No.	Comments	Date	Drawn	Checked	Field Eng.	Proj. Mgr.

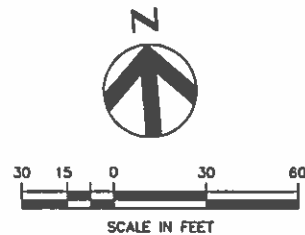


HDR
HDR Engineering, Inc.
608 Columbia Street NW, Suite 200
Olympia, WA 98501
(360) 570-4400
(360) 570-7253 - fax

Project Manager
BRAD SHEAR
Designed
BRAD SHEAR
Designed
JOSH METCALF
Checked
KEVIN BURCH

**TOKUL ROAD
INTERSECTION IMPROVEMENTS**
WASHINGTON
DECEMBER, 2012

GRADING PLAN
TOKUL RD/SR 202/MILL POND RD
STA "S" 18+50 TO 23+41 & STA "T" 28+50 TO 31+50
Scale: DECEMBER, 2012
Scale: AS SHOWN
Project No.: 00000-033-868
Drawing No.: 33868-RAB.dwg
Issue: 39/99



STA.: 18+37.17
END HMA PAVING
BEGIN CEMENT CONC. PAVING

STA.: 31+62.12
END CEMENT CONC. PAVING
BEGIN HMA PAVING

STA.: 21+63.59
END CEMENT CONC. PAVING
BEGIN HMA PAVING

STA.: 28+35.54
END HMA PAVING
BEGIN CEMENT CONC. PAVING

GENERAL NOTES:

1. TRANSVERSE JOINT SPACING WITHIN TRAVEL LANES AND BIKE LANES SHALL BE 12-FOOT MAXIMUM.
2. TRAVERSE JOINTS SHALL BE DOWELLED PER WSDOT SECTION 5-05.
3. THE RATIO OF MAXIMUM TO MINIMUM SLAB DIMENSIONS SHALL NOT EXCEED 1.25.
4. JOINT DETAILS SHALL BE PER WSDOT STD PLAN A-40.10-02 AND A-40.15-00.
5. CURB AND GUTTER JOINTS SHALL MATCH ROAD PANEL JOINTS.
6. PAVEMENT TRANSITION DETAILS SHALL BE PER WSDOT STD PLAN A-40.10-02.

C:\paving\33968\33968-RAB.dwg
Mar 20, 2013, 11:39am - CSomers

Issue No.	Description	Date	Drawn	Checked	Revised	Proj. Mgr.



608 Columbia Street NW, Suite 200
Olympia, WA 98501
(360) 570-4400
(360) 570-7253 - fax

Project Manager

BRAD SHEA

Designed

BRAD SHEA

Designed

JOSH METCALF

Drawn

KEVIN BURCH

**TOKUL ROAD
INTERSECTION IMPROVEMENTS**

WASHINGTON

DECEMBER, 2012

CONCRETE PAVING PLAN

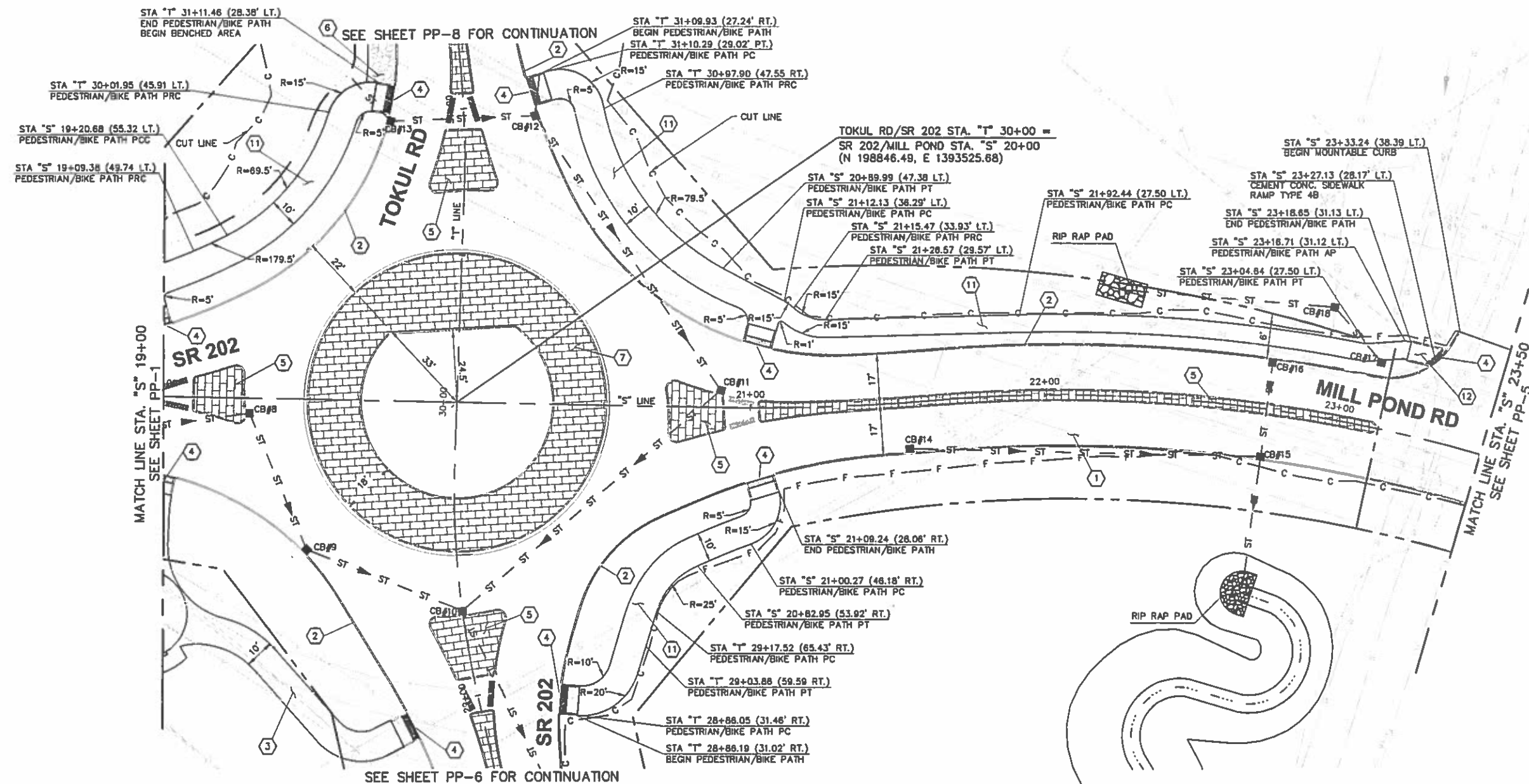
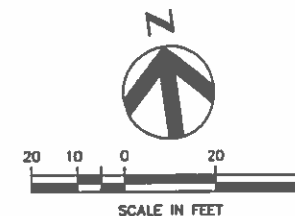
**TOKUL RD/SR 202/MILL POND RD
STA "S" 18+50 TO 23+41 & STA "T" 28+50 TO 31+50**

Date
DECEMBER, 2012
Scale
SCALE AS SHOWN

Project No.
00000-033-868
File Name
33968-RAB.dwg

Drawing No.
RAB-3

Issue
41/99



CONSTRUCTION NOTES

1. CONSTRUCT ROADWAY SECTION PER TYPICAL ROADWAY SECTIONS ON XS DRAWINGS.
2. CONSTRUCT ROUNDABOUT CEMENT CONCRETE CURB AND GUTTER PER DETAIL ON SHEET DT-1.
3. CONSTRUCT ASPHALT CONCRETE PEDESTRIAN/BIKE PATH PER SHEETS PPaw1-PPaw3 AND DT-3.
4. CONSTRUCT SIDEWALK RAMP PER DETAILS ON SHEET DT-7 & DT-8.
5. CONSTRUCT CEMENT CONCRETE SPLITTER ISLAND PER DETAILS ON SHEETS DT-2, DT-10, AND DT-11.
6. SEE TYPICAL SECTIONS FOR SHOULDER GRADING AND TREATMENT.
7. CONSTRUCT CEMENT CONC. TRUCK APRON PER DETAIL ON SHEET DT-1.
8. CONSTRUCT RETAINING WALL PER DETAIL ON SHEET DT-9.
9. CONSTRUCT ACCESS ROAD PER SHEET DW-2.
10. NOT USED.
11. CONSTRUCT CEMENT CONC. PEDESTRIAN/BIKE PATH PER DETAILS ON SHEET DT-1.
12. CONSTRUCT CEMENT CONC. SIDEWALK RAMP TYPE 4B PER WSDOT PLAN F-40.18-00.
13. CONSTRUCT ACCESS ROAD PER SHEET DW-1.

NOTE:
SEE SHEET RAB-1 FOR MOUNTABLE CEMENT CONCRETE TRAFFIC CURB LINE AND CURVE DATA.

HORIZONTAL DATUM:

WASHINGTON STATE PLANE COORDINATE SYSTEM, NORTH ZONE, NAD 83/91.
PROJECT IS REFERENCED VIA GPS TO WSDOT CONTROL POINTS "S17108" (MONUMENT ID. NO. 5082) AND "S17108" (MONUMENT ID. NO. 5089).
THE DISTANCES SHOWN HEREIN ARE GROUND DISTANCES.

Rev.	Description	Date	Drawn	Check	Proj. Engr.	Proj. Mgr.



HDR
HDR Engineering, Inc.

608 Columbia Street NW, Suite 200
Olympia, WA 98501
(360) 570-4400
(360) 570-7253 - fax

Project Manager
BRAD SHEA
Designed
BRAD SHEA
Designed
Checked
JOSH METCALF
Drawn
KEVIN BURCH

TOKUL ROAD INTERSECTION IMPROVEMENTS

WASHINGTON

DECEMBER, 2012

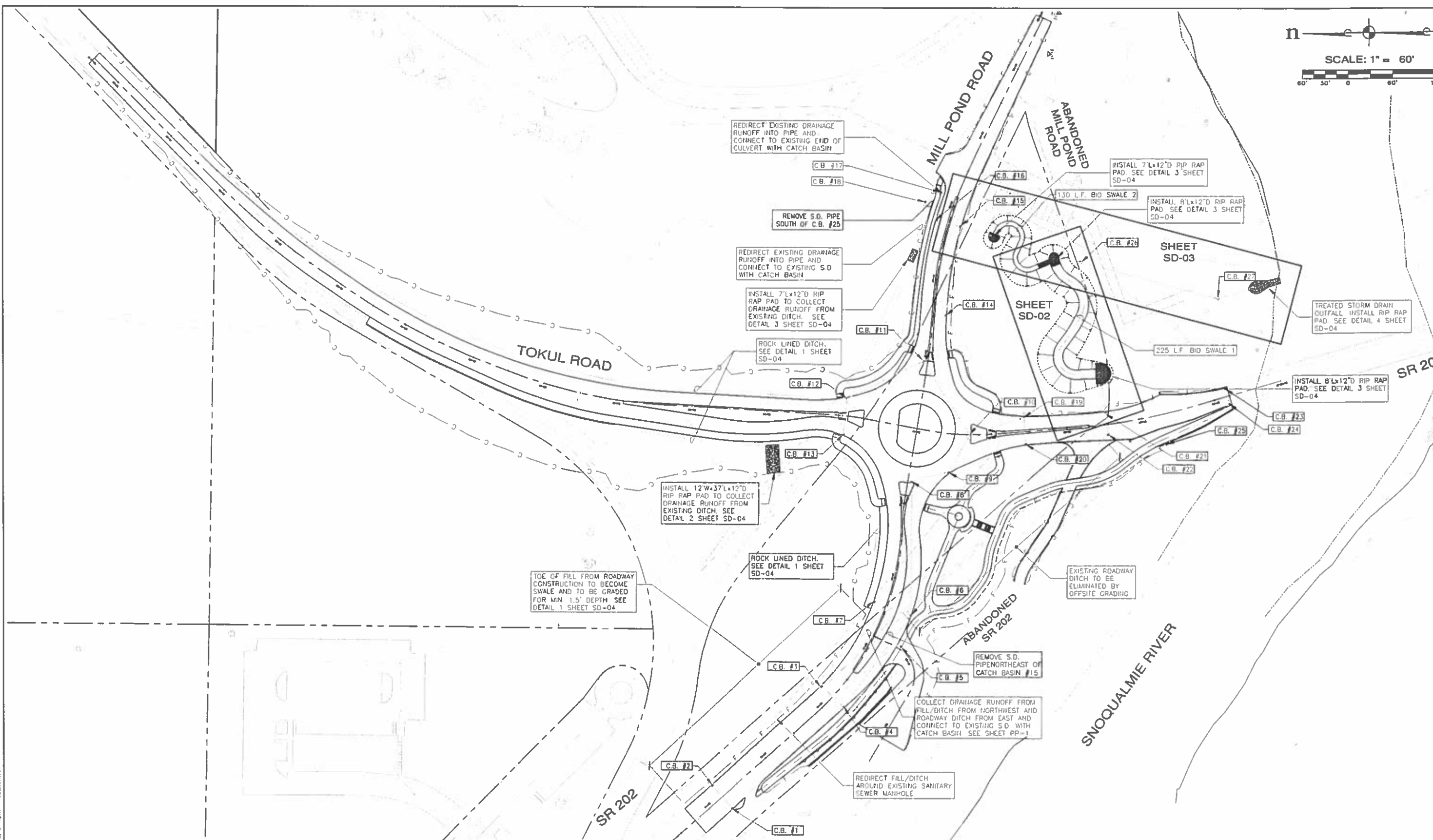
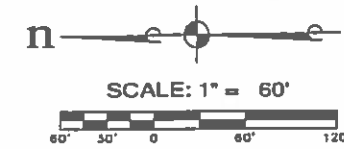
ROADWAY PLAN AND PROFILE SR 202 AND TOKUL RD AND SE STEARNS RD STA. 19+00 TO STA. 29+04

Date
DECEMBER, 2012
Scale
SCALE AS SHOWN

Project No.
00000-033-888
File Name
33868-PP1.dwg

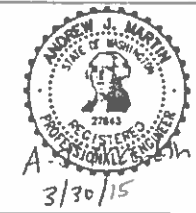
Sheet No.
PP-3

Total
45
of
99



C:\pwworking\hmr\sm24211\SD-01.dwg
Mar 18, 2016, 3:41pm - C:\sm24211

Issue No.	Description	Date	Drawn	Checked	Proj. Eng.	Proj. Mgr.



HDR
HDR Engineering, Inc.
626 Columbia Street NW, Suite 2A
Olympia, WA 98501
(360) 750-4419
(360) 357-8573 - fax

Project Manager
DAVID R. SKINNER
Designed
RN
Designed
CS
Checked
AW

**TOKUL ROAD
INTERSECTION IMPROVEMENTS**

CITY OF SNOQUALMIE, WASHINGTON

STORM DRAIN OVERALL PLAN				Date	Project No.	Drawing No.	Issue
				JUNE, 2008	00000-033-868	SD-01	59/96
				Scale 1"=60' HOR	File Name SD-01.dwg		