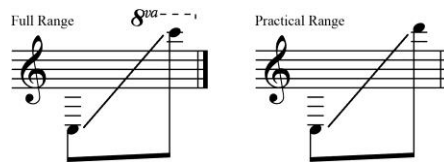


Antiquated Clarinets

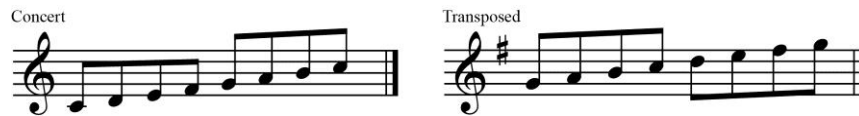
Basset Horn

The basset horn is a cylindrical bore, single reed, transposing instrument typically sounding a perfect 5th below the notated pitch. The instrument has been manufactured in a variety of keys (D, E flat, E, F, G and A) with the basset horn in F being the most common. Its timbre is darker and somewhat less brilliant than that of its clarinet counterpart. Due to the instrument's limited availability, if one is orchestrating a selection that originally called for basset horn, one should consider substituting a contemporary instrument of greater availability, and similar range and register (see Chapter 14, Instrument Substitution).

Basset Horn Range



Basset Horn Transposition

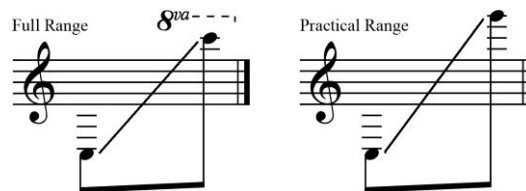


The basset horn sounds a perfect 5th below the written note. Transposed parts are notated a perfect 5th above concert pitch (adding one sharp to the key signature) and always notated in treble clef.

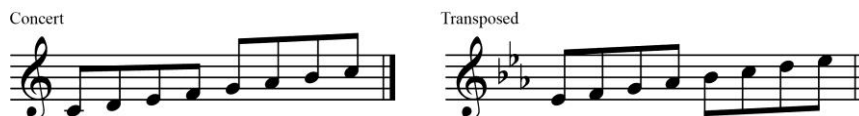
Basset Clarinet

The basset clarinet is a transposing instrument sounding a minor 3rd below the notated pitch. The instrument has been manufactured in a variety of keys (B flat, C, G and A) with the basset clarinet in A being the most common. While it is similar to the clarinet in A in timbre and construction, it has an expanded lower register, extending an additional major 3rd (C) below the standard clarinet. As with the basset horn, the instrument has limited availability, and one's orchestration is best served by substituting a contemporary instrument of greater availability (see Chapter 14, Instrument Substitution).

Basset Clarinet Range



Basset Clarinet Transposition



Basset clarinets sound a minor 3rd below the written note. Transposed parts are notated a minor 3rd above concert pitch (adding three flats to the key signature), and always notated in treble clef.