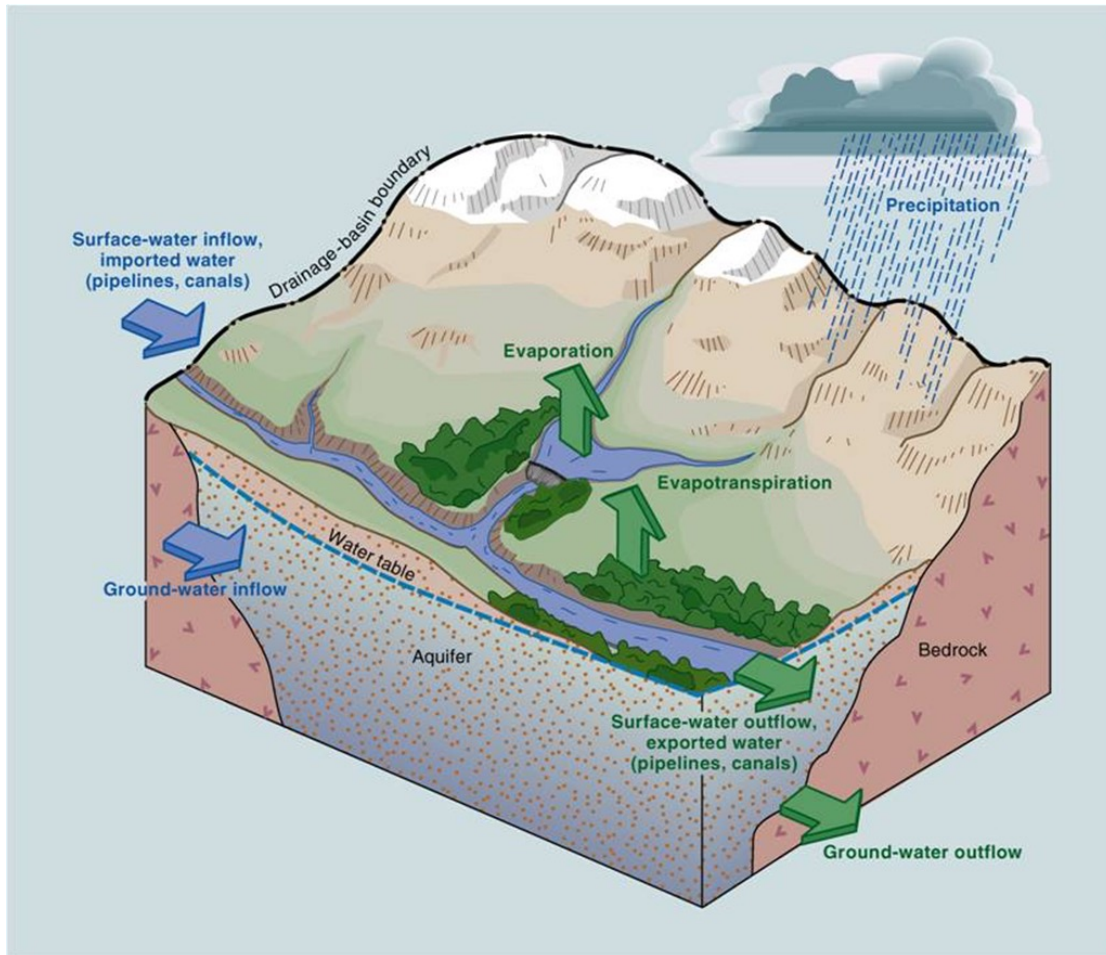
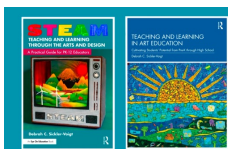


STEAM

WATERSHEDS



- A **watershed** is a dividing land area or ridge where rainwater and snowmelt drain into a single water source.
- **Surface-water watersheds** are located at the surfaces of land. They include rivers, streams, lakes, and wetlands.
- **Ground-water watersheds** receive water from higher points and drain to sources including underground rivers and aquifers.



STEAM

WATERSHEDS

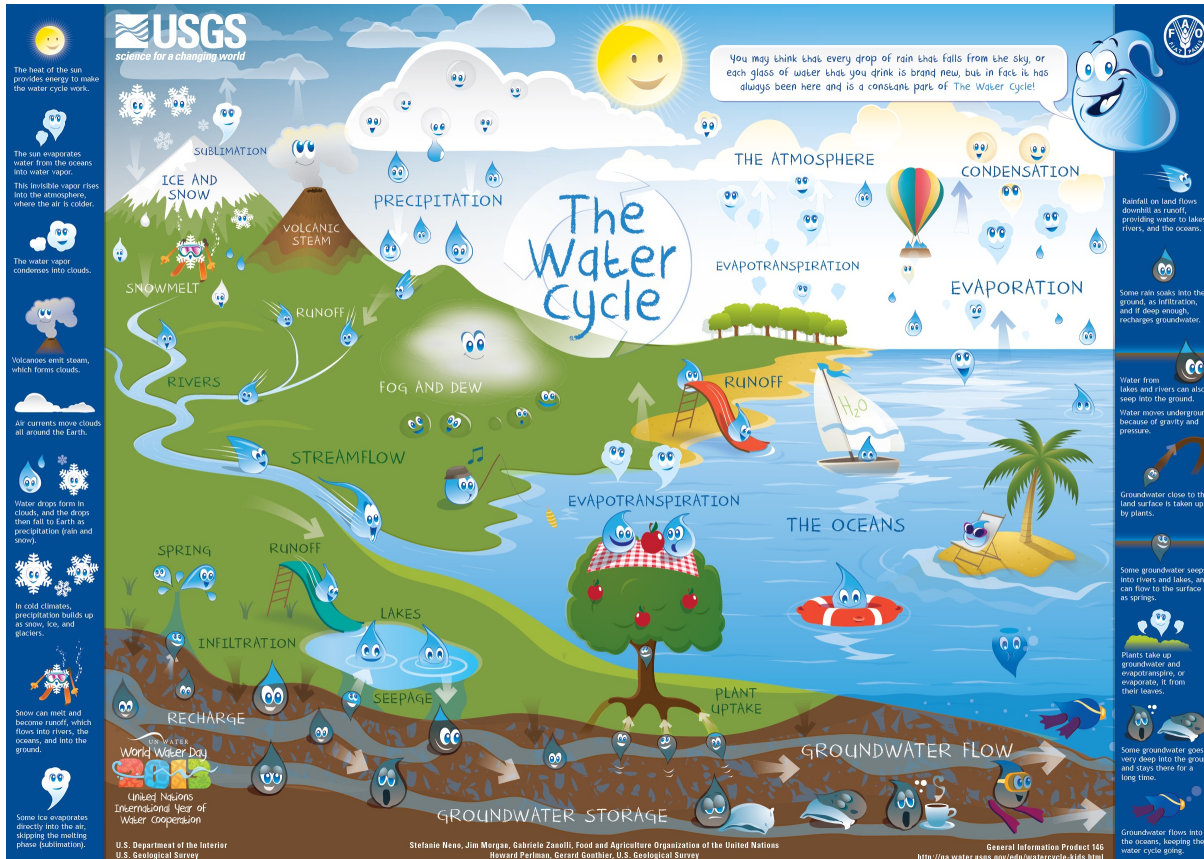


Image: USGS. Reference: Potyondy, J. P. & Geier, T. W. (2011). *Watershed condition classification technical guide*. United States Department of Agriculture Forest Service. <https://www.rosemonteis.us/sites/default/files/references/potyondy-geier-2011.pdf>

The US Forest Service's National Watershed Condition Team's three classifications are:

- Class 1 = Functioning Properly
- Class 2 = Functioning at Risk
- Class 3 = Impaired Function