



Teaching and Learning in Art Education 2nd Ed

Cultivating Students' Potential from Pre-K through High School

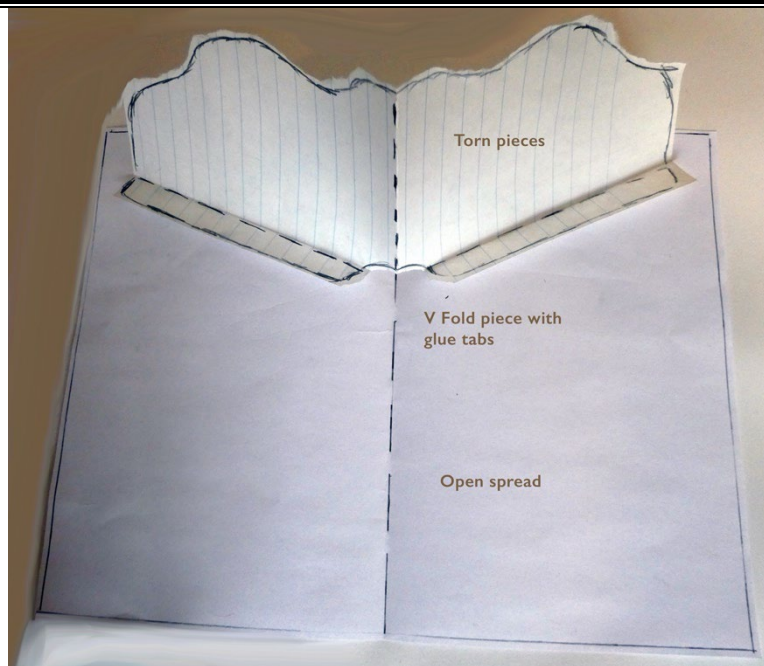
© Debrah C. Sickler-Voigt, PhD



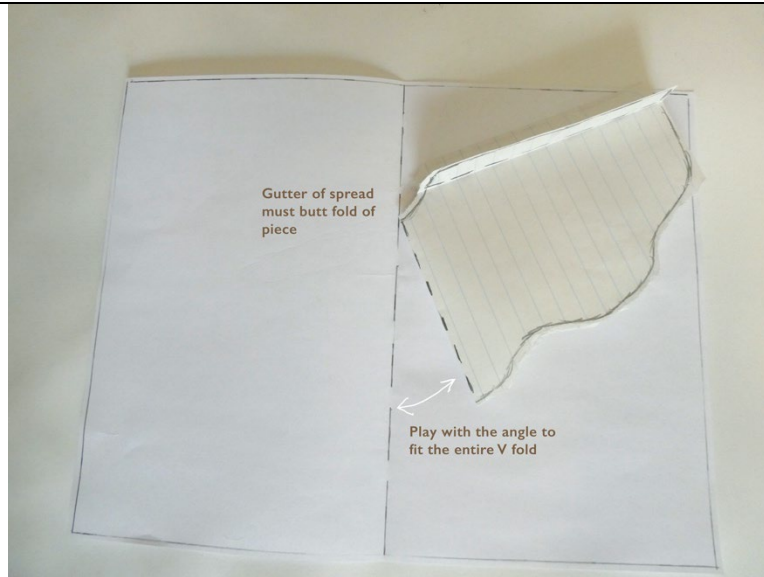
Thinking in Extensions: How to Expand Your Use of Paper and Poetry by Sally Blakemore

Extensions are cut paper that can be used to enlarge and enhance a basic form — “V” fold, platform, round out, box, hinge, bridge or strut.

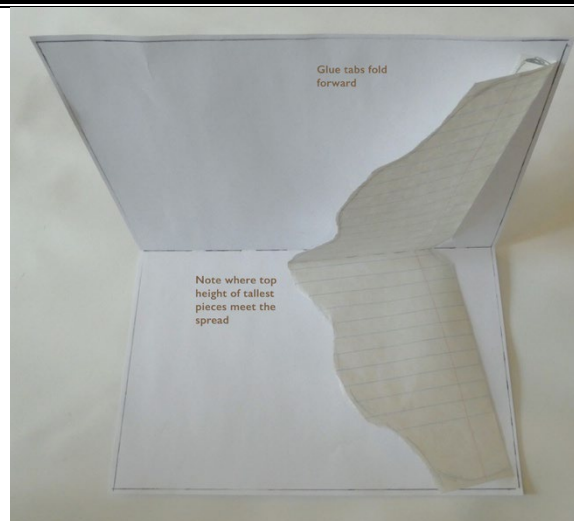
When I begin designing a folded spread, I first think about what I am trying to demonstrate with the paper engineered form. Will it be architectural, explosive, reveal and conceal or abstract form? Like Robert Sabuda’s amazing “gift box” used in *The Christmas Alphabet*, 1994, the poetic surprise is found in an extension to the gift box. By using a paper hinge, added to the top of the box, it can close and open when the spread is opened and closed.



Step 1: By observing the opening and closing of paper mechanics, the timing of the folding pieces is revealed.

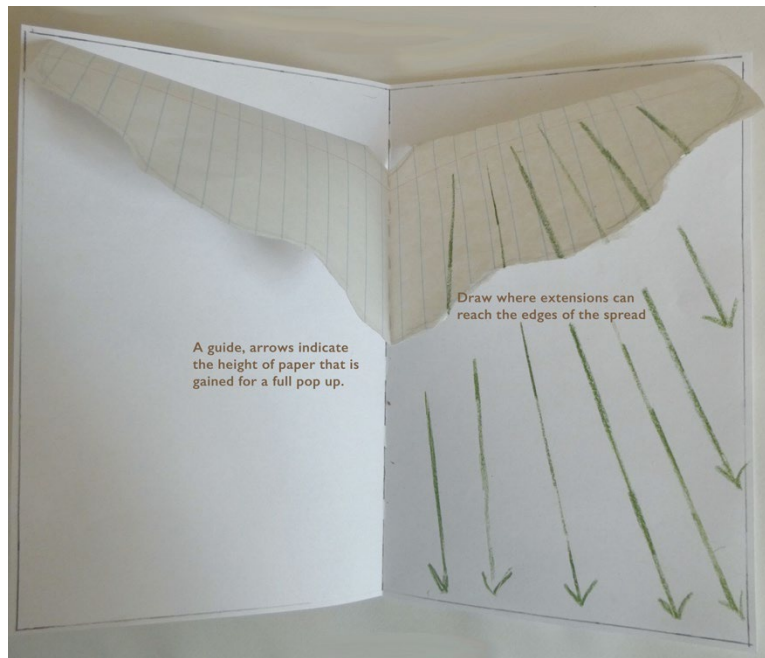


Step 2: Using any kind of paper, begin to “tear” the shapes you create, instead of cutting them. A more organic form of art will emerge. A basic formula begins by merely folding an 8.5” x 11” bond in the middle and tearing the shape. Establish the position. Glue, tab backs to page. Tabs will pull the V fold up.

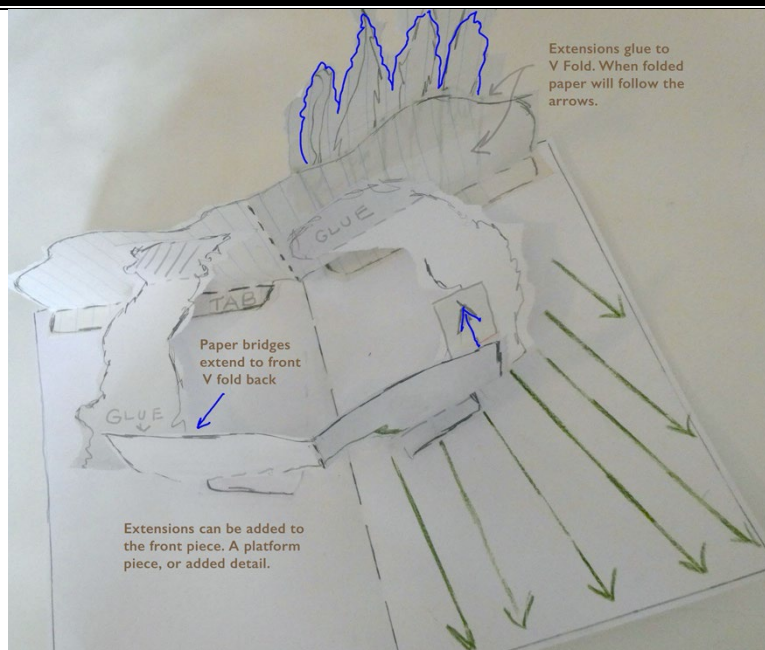


Step 3: Consider the following:

- What part will fold down first?
- What part will overlap and collide with another piece?
- What shapes will allow more paper to be added to it for finesse and surprises?
- How to use multiple basic forms, like platforms, V-folds and extensions to the full extent of the spread?



Step 4: Extensions are added to gain height to the edge of the spread.



Step 5: Experiment fluidly, by tearing, placing and gluing the tabs. You are constructing a paper sculpture. As soon as you like the form you have made, fold and trim off any pieces that protrude from the folded base paper spread. Adapt your visual to the trimmed forms. The paper will tell you what to do next. Intuitively you will be able to solve visual problems without using a ruler or any measuring tool.