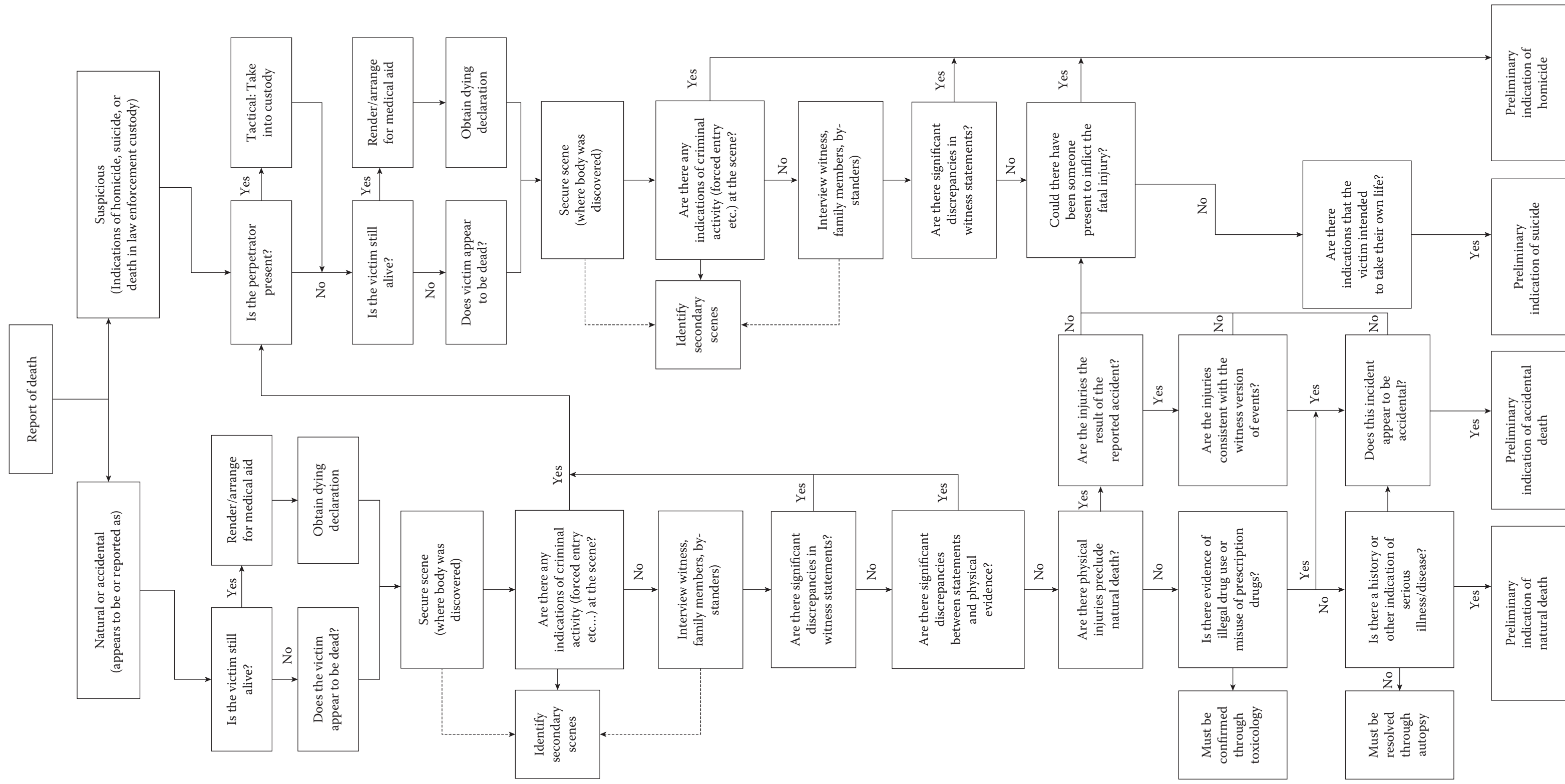


Death Scene Investigation Decision Tree



Evidence in Context

- What is it?
 - Does the item make sense in the scene?
 - Can its presence indicate action or actor?
 - Can ownership or handler be associated through this item?
- Where is it?
 - Does its location make sense?
 - Does it appear to have been moved, if so, by whom?
 - Does its location allow you to place actors or actions within the scene?
- When is it?
 - Can its presence be sequenced with any other event?
 - Can that event be sequenced into a larger series of events?
 - Does its sequence indicate action or actors?
- Why is it?
 - It can be explained logically and does not further impact the investigation
 - It suggests a logical lead or investigative direction (or alteration to investigative direction)