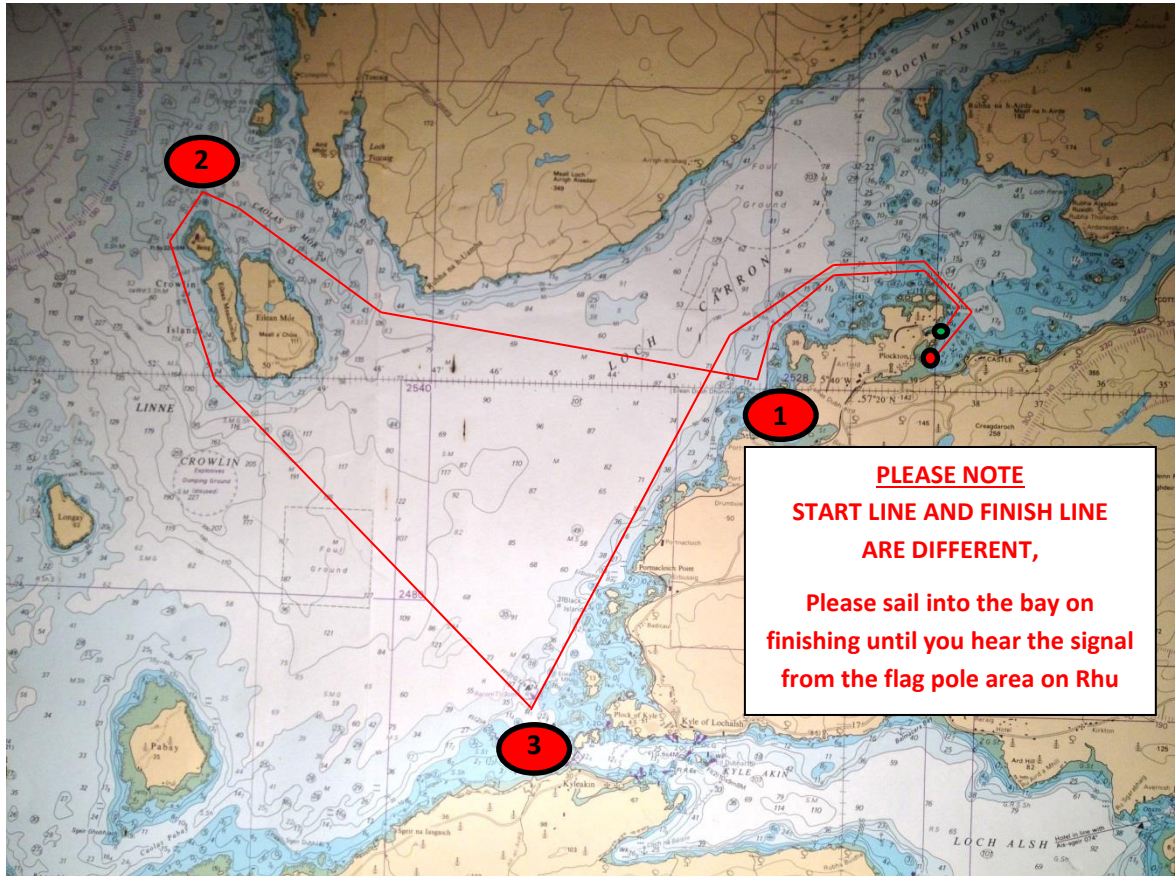


Course

Will start at approx. 1000hrs and the start line will be a transit from the Officer of the Day (OoD) at the end of the main pontoon light pole - out to the **White Pole** on the Plockton Rocks.



The Course is roughly shown on the chart above, please do not use this as your route, it's just a rough line to show you the rough direction of marks and the area you will be covering.

The Course starting at the big pier pontoon transit to Plockton Rocks, round the Yellow Special Mark (Cach mor) (1) to Starboard, then round Crowlin Island (2) to Port, then round the Green Outer Buoy at the Skye Bridge (3) to Port then Home to Plockton.

Many of you have sailed around this area before, but if you haven't and even if you have, the Club advises you to passage plan thoroughly for the race and be extra cautious around shallow areas.

The Finish line will be from the Flag Pole on the Point of Rhu, Plockton on a transit across to Duncraig.

A Sound Signal will indicate your completion of the course.

Good Luck and will see you on your return.