

# Gartly Community Action Plan

September 2016



### Welcome!

This document brings together a wide range of issues, actions and projects which the community of Gartly has identified as important to its members.

Following a thorough and inclusive consultation programme, all of the proposed actions are grouped under the following seven themes:

### Theme 1: Recreation, Cultural and Social Life

### Theme 2: Assets and Facilities

### Theme 3: Local Communication

### Theme 4: Telecommunication

### Theme 5: Transport and Infrastructure

### Theme 6: Environment

### Theme 7: Housing, Health and Education

The themes are described more fully on pages 9 - 11. The table on pages 12 - 14 lists each issue, together with its proposed actions and associated key partners.

### An Introduction To Gartly Gartly Parish

Currently with a population of around 340 people the Parish of Gartly was first defined around the mid-14th Century and by the 16th Century it appears in official documentation. Its boundaries and features were described in 1875 as follows:

"Gartly, a parish of NW Aberdeenshire, comprising a detached portion of Banffshire, and, near its southern border, containing Gartly Station on the Great North of Scotland railway, 5 miles S of Huntly and 35 1/4 NW of Aberdeen, with a post and railway telegraph office. Bounded NE by Drumblade, SE by Insch, S by Kennethmont and Rhynie, W by Cabrach and Glass in Banffshire, and NW and N by Huntly, it has an utmost length from E to W of 10 1/2 miles, and utmost breadth from N to S of 4 1/2 miles, and an area of 18,126 1/3 acres, of which 38 1/4 are water; and 6348 1/6 belong to the Banffshire section. The Bogie winds 3 3/4 miles northward through the interior, having the Barony or Banffshire Section to the E and the Braes of Aberdeenshire section to the W, and then proceeds 1 1/4 mile north-north-westward along the Drumblade border. The Ury has its source in the E of the Barony; and the Braes is drained to the Bogie by Kirkney Burn and by Lag Burn and Priest's Water, uniting to form Ness Bogie, whose lateral vales, as also Stathbogie itself, abound in charming scenes of quiet pastoral beauty"

*(Extract from A New History of Aberdeenshire Alexander Smith (Ed) 1875)*

The parish is located in the Grampian Outliers (foothills of the Cairngorms). The main settlement is Gartly village (previously known as Gartly Station) located at the south of the Parish, much of the housing stock in the Parish is constructed with local stone, many houses are situated in the hills and glens, small clusters of housing are found at Shanquhar, Blackburn, Kirkney, Culdrain, Tillyminnet, Coynachie, Tillathrowie and Bridgend of Gartly,

the remainder of the Parish housing is located along the hillsides and glens surrounded by farmland and forest. The landscape is a patchwork of mixed use farmland, glens, moors and forest along with tributaries joining the winding river Bogie flowing along Strathbogie. Rolling (knolls) hills and hidden glens are a predominate feature.

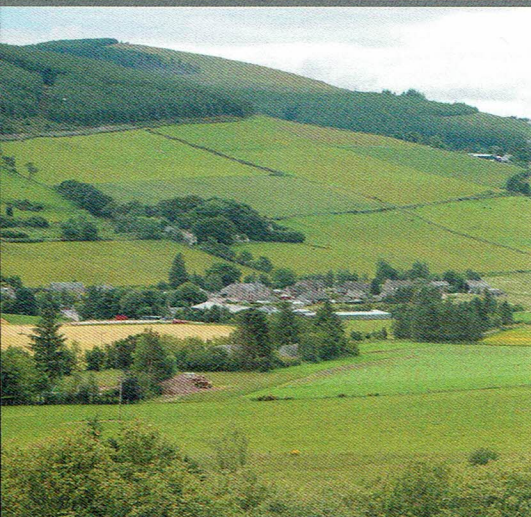
The Schools (Braes of Gartly and Gartly Female Schools), its Library and The Chapels (Heatheryhillock; Tillathrowie; Bralanknowes (Chapel of Muiralehouse, so named from a public house on the highway southwards) and Kirkney) and Church (Barony) were primarily located in the area known as the Braes of Gartly and in the Barony of Gartly Castle (long since ruined) and its Church originally built in 1621 and manse built in 1756. There were also two licenced distillers and at least one alehouse. The Parish church (also known as St Andrews Church, Gartly) still stands in the east side of the Parish (closed circa 2012). Hence, the location of Gartly 'Central' Schools (closed circa 1962) and the Gartly (Community) Hall (circa 1929) are located at Bridgend of Gartly in the Braes and not in the village itself.

In 1854 Gartly Station opened accepting both passenger and freight (livestock) on the Aberdeen - Inverness line of the Great North of Scotland and Highlands Railway. There was also a telegraph and Hotel at Gartly Station.

### The Mither Tongue

Doric is the Mither Tongue of the North East of Scotland. It has a rich and melodic lilt, a highly descriptive language with its roots in the everyday lives of traditional farming communities. Mostly an oral language, it reflects people's close relationship with the land. It was widely spoken in Gairtly, but its usage was suppressed in schools from the late 1940s. However, during the last decade there has been a resurged interest in Doric within the Scottish Schools Curriculum for





Excellence and now a the bairns at the squeel, a the loons an quines, can ate their mornin piece and hae a fine blether, without intervention or correction.

## The Place Name - Gartly

The local author John MacDonald, when reviewing Place Names in Stathbogie in 1891, researched the history and the derivation of the name Gartly and wrote that from the year 1500 and downward, the usual spellings are Gartullie, Gartlay, Gartley, Gartlie and Gartly. Previous to that date the name is given in authentic documents under twelve different spellings, which, however are practically three viz, Garintuly, Garntuly and Grantuly, and these forms occasionally appear during the first half of the 16th Century ... MacDonald was therefore disposed to think these names have the same origin, and that the Gaelic form Garadh-antulaich (dh mute) means 'the enclosure knoll'. This is the literal meaning, but like many similar words garadh also denotes what is enclosed, as a garden, a dwelling or 'town'. So that Garntuly may be fairly translated 'the town of the knoll' or as we say today, the Hilltown, and we have evidence that the name was so understood ... 'The Hiltoun' thus appears nearly 300 years ago, as the popular name of the remains of the old castle, standing close to the farm steading. This places the meaning of the name Gartly beyond dispute.

The Barclays of Gartly are frequently mentioned in official documents relating to their various properties, and in the Sheriff-Court books of the counties of Aberdeen and Banff. However, MacDonald concluded that the history of the family during more than 200 years has been little investigated, that local historians have only succeeded in throwing some interest into it by introducing persons and events connected with other families of the name. MacDonald then details a lists of some names and dates of the history of the Barons of Garntuly and Berclay.

He concludes that the name was closely associated with the long since ruined Gartly Castle, and that one of the barons having built the church in the barony, the name became attached to the church and the parish when the chapels of Bralanknowes and Tillathrowie were suppressed. Many parishes arose in this way, and the limits were afterwards defined by Ecclesiastical and Civil Courts."

## Landscape and People

Historical documents and maps, covering the last three centuries, depict some of the key characteristics of the parish; knolls (rounded hills), fertile glens (faich) and valleys; some alderwood and birch, Yaiken Bank (Oak bank); water mills; abundant springs; river and tributaries containing a healthy brown trout population along with salmon spawning grounds; quarries (esp Slate) stone enclosure (dykes); birdsong; mosses, moors and heathland with grouse and hare.

In 1783 the sole proprietor of the parish is listed as The Duke of Gordon.

Statistical information in past Censuses indicate that the Number of souls in the parish in 1755 as 1328; in 1783 as 2000; in 1793 a total of 1800 was recorded. In 1836 it had risen again to 1136 from a low recording of 979 in a previous census. The rise in population in 1836 was due to the employment provided to men in the slate quarries along with the influx of their families. However, with the advent of the railway, cheaper Welsh slate saw the demise of the local slate industry.

In a ministerial account of the Parish in 1794 it was noted that there was no disease particular to this parish and that in general the Parishioners were industrious, orderly and well affected to government. There were at that time two licenced distilleries. The Rev Mr James Scott Minister noted that instances of longevity are not uncommon and that after ample evidence that the climate, though cold,



is healthy. One example is given of a farmer name of John Ferrier who died in Kirkney in the parish in 1788 who was aged 102 years.

## The Two World Wars

It is without doubt that the two World Wars had an enormous impact on all who lived in the Parish. The war memorial to commemorate those who gave their lives in these wars is located in the grounds of the Parish Church. "To the memory and honour of the men of Gartly who gave their lives for their country in the struggle for righteousness and freedom in the Great War of the Nations 1914-1918 and 1939-1945". Another plaque to commemorate those men who gave their lives in these wars can be found at the entrance to Gartly Primary School.

## Gartly Station

An ex great North of Scotland Railway station. This intermediate station on the Great North of Scotland Railway portion of Aberdeen-Keith-Inverness line of the (former) Great North of Scotland and Highlands Railways was opened by the former company in September 1854. It was also known as Gartly for Lumsden and Strathdon station, and closed to regular passenger traffic on 6 May 1968. The line itself remains in regular use by passenger traffic.

## Farming

For centuries, farming was the main occupation in the Parish. By the late 1770s fields were being ploughed by horse and by 1836 The Rev Mr Robertson Minister noted that horses of different sizes fitted for different ways were employed and numbered above 340. Black cattle, noted as being generally small but of a very tight Highland breed numbered about 1500. The sheep were of a small kind and numbered between four and five thousand.

In 1828 George Gordon Esq Buchan obtained the Highland Society's Honorary Gold Medal for 160 acres of land most improved during the

seven preceding years. This gentleman and four others also sub-divided and enclosed their fields with very substantial stone dykes.

The introduction of growing turnips for animal feed and better selection of breeding livestock along with drainage of land and stone enclosures helped farmers to prosper at times during the past two centuries, but there were often periods of economic hardship and always the challenge of the climate, snowfall, wind and late frosts.

As farm sizes grew and with increased mechanisation the numbers employed reduced. This along with the vagaries of the climate; the cost of land or rent, along with the cost of animal feed and the vagaries of the sale price of livestock and its produce, made farming of the past and of the present a challenge to all those who are involved in the industry.

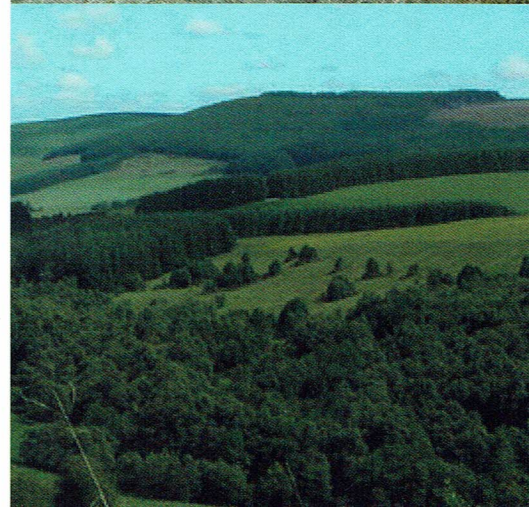
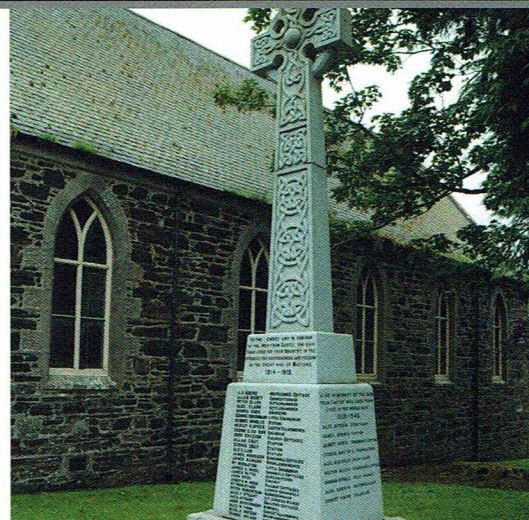
There will no doubt be further changes in farming as the new political landscape becomes clearer with the decision that the UK and Scotland are exiting the European Union. The effect this decision will have on the Common Agricultural Policy and various farming funding streams are yet to unfold.

Records show that the climate has changed over the centuries and more so in the recent past, and winters are not as severe or as long in duration as in the past. The landscape and management of the land has also changed and with these changes new opportunities may arise.

## Forests In Gartly

The ancient woods of Tillyminnet have been recorded in old texts as being very pleasing and remain so to this day.

In 1929 The Forestry Commission purchased over 17,000 acres of land from the Duke of Richmond Gordon and Lennox; part of this land was within Gartly Parish. Following this came the establishment of the







Clashindarroch Forest, which had a very chequered early history when selecting the optimal tree species to plant and establish the forest. It is now a substantial commercial timber forest which continues to be under the stewardship and management of the Forestry Commission Scotland (FCS).

The Clashindarroch and Gartly Moor forests are predominately made up of non-native pine species which are grown for commercial timber harvesting; there are numerous unmarked roads and paths for forestry vehicles but also for recreational use, although some of these are at times closed for forestry operations.

More recent developments in the forest have included the Clashindarroch Windfarm (Vattenfall, Swedish Energy Company), a development established not without controversy. Eighteen turbines have been fully operational since 2015. These large turbines generate electricity which feeds into the national grid and help meet Scotland's renewable energy targets.

The new millennium saw the creation of a new Wids (forest). Darroch Wids is a unique landscape scale native woodland created by today's generation to be enjoyed by generations to come. The community of Gartly were actively engaged with Scottish Forestry Alliance (partners included Forestry Commission Scotland; British Petroleum; Royal Society for the Protection of Birds and Woodland Trust Scotland) with planting the new Darroch Wids at Coynachie. Darroch Wids are made up of three sites Blackmiddens, Merdrum and Coynachie which are connected through the Clashindarroch forest providing a wide range of routes for walkers, cyclists and x-country skiers.

Local schools and communities planted many of the native trees such as scots pine, oak, birch, ash, alder, aspen, rowan and juniper, as well as successfully breaking the Guinness World Record to plant the most trees in 1 hour -

6

18,124! Six circular waymarked walks were created through the new forest which provide access to the community and visitors.

Regular annual events are now a feature in both the Clashindarroch Forest and Coynachie, Darroch Wids. These include in April, The Speyside Stages Rally, and in June the British Nordic Development Squad (x-country skiing) fundraising event 'Ming the Merciless endurance (fun!) biathlon, as well as the annual horse event and the much enjoyed Gartly Community 'soup and walk'. A variety of other groups use Darroch Wids for educational and recreational pursuits; Gartly Primary School and The Gordon Schools Huntly (Secondary School); Cubs and Scouting and Rambling groups to name a few.

## Gartly School(s)

On Thursday 11th October 1962 the new School at Gartly Station opened which was to be known as Gartly School. It had been built to take the place of Gartly School, previously known as The Central Schools, and Duffs School. The Braes of Gartly School was closed earlier and the pupils enrolled at Gartly School.

Gartly Primary School is currently the main hub of education and catchment school for children who reside in the Parish. The current roll is 47 primary and 9 nursery. There are two classes (Primary 1 to 3 and primary 4 to 7) and a separate classroom for the nursery children. Most children move onto The Gordon Schools in Huntly for secondary school education.

The school was painted in 1992 after many years of not being done. In 1991 the first attempt was made to improve the wildlife garden which was just a grassed area and often flooded. Trees were planted and a pond dug. The wildlife garden as viewed today, offers the children a school garden and outdoor classroom which were developed in 2011-2012.



In 1998 the P1-4 class was converted into a nursery as a result of a government initiative to provide more nursery provision. In 2009 the disabled bathroom, disabled access, access to the nursery classroom outside and fencing around the school were installed. This allowed the development of a secure outdoor play space.

There is an active Gartly School Partnership who organise various fundraising activities to support and help fund some of the extra fun activities that the school children enjoy during the course of the school year. The children, teachers, parents and carers were fully engaged with the process of creating the new Gartly Community Association (GCA). The Gartly Primary children as school project designed and created the super new GCA logo.

### Gartly Community Hall

At the start of the new millennium, thanks to the Hall committee and volunteers, a new lease of life was injected into the Community Hall, improvements were made, painting the exterior and interior of the building; grounds work, new planting and improved car park surface; new community re-cycling centre and the introduction of a Royal Mail post box. Inside the hall, the kitchen was refurbished and the toilet facilities updated.

The Gartly Community Hall, affectionately known as 'The Tin Hut', is the venue for a variety of regular events, and acknowledged as having great acoustics. It is home to the Tin Hut Sessions, and winner of the MG Alba Scots Traditional Music Awards 2014 Club of the Year. The sessions offer a superb programme featuring national and international musicians which are greatly enjoyed by both locals and visitors alike. Regular folk evenings also encourage everyone to come along, sing, play and generally have a good night out!

Other Hall events include the Children's Christmas Party, Hogmanay

Party, Burns Supper, Art in the Hut, Photo in the Hut, Huntly Summer School Tutors Performance and the Tin Hut Suppers (as part of Huntly Hairst). Over recent years it has been the venue for several weddings and other family celebrations and lots of ceilidhs!

The Hall is available to hire and provides the venue for a host of other community and cultural events. It is also the venue for Gartly Community Association (Est 2014) and some of the Tap O Noth Community Council meetings and Marr Community Planning Group's community ward forum meetings.

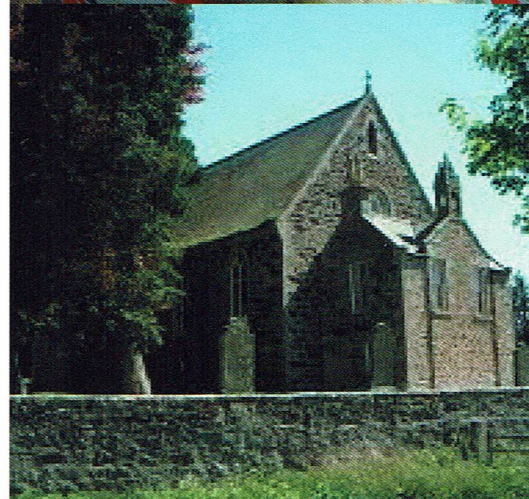
### Congregation And Communication

Religious activities and buildings are well documented in the bygone eras of Parish history. The last official remaining place of worship in the parish, The Gartly Parish Church, was closed in 2012. Nowadays many of the Parish residents congregate at the various cultural, sporting and educational activities held throughout the Parish. The closest places of worship are now located in Huntly and Rhynie.

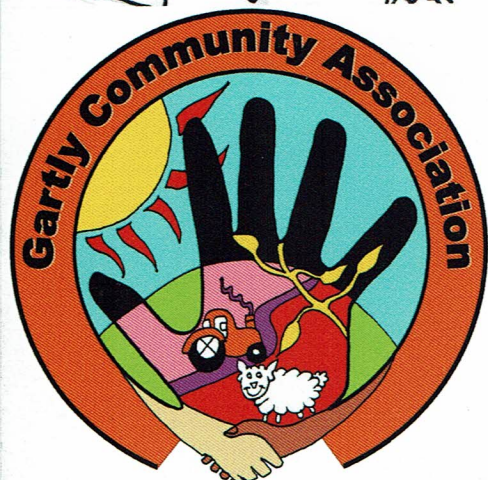
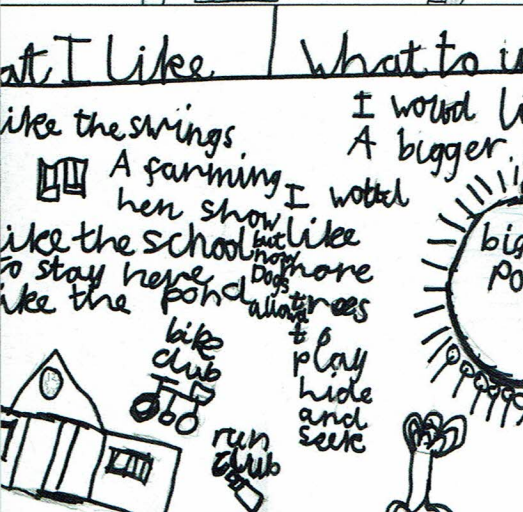
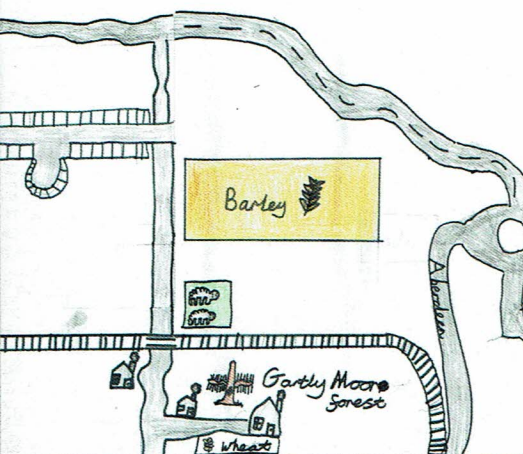
Like many Parishes and communities, much of day to day communication is now via the Internet and the world wide web, and on mobile digital technology. Gartly Station, once well connected through its train station and telegraph office is like much of the Parish much less well connected 200 years later.

The advent of superfast broadband internet connection being available in most areas of Scotland is so far being routed a mere 25 metres away from the Gartly Telephone Exchange, as the superfast fibre broadband connection heads on up and down the Strathbogie valley. Mobile telephone connection coverage is also very patchy or non-existent in areas of the Parish.

Lack of digital connectivity is a new 21st Century issue for the Parish to







try to address. The creation of a Gartly Community Action Plan helps identify projects and partner organisations, with the desire to help enrich the lives of all who live, work, visit and generally enjoy life in Gartly.

## Gartly Community Association



The idea to initiate one body which represented the community of Gartly came about from a large representation of the public who attended meetings during the summer of 2014.

Various options were discussed to achieve the possibility of establishing a Community Association which would also enable easier access to funding for community benefit but it was recognised that as Gartly Hall Committee (GHC) had a long history in the community and, so to avoid any duplications, discussions took place with the then Chairman and Secretary of the GHC as to the possibility of broadening the scope and purpose of the proposed new association to encompass the GHC. In general, it was agreed that, subject to a new Constitution being drafted and accepted by the Charities Board and adopted at an extraordinary General Meeting of the GHC, Gartly Community Association would come into being.

Gartly Primary School has been actively involved designing a logo for the Gartly Community Association which represents the Gartly Community. They have also been actively involved in this Community Action Plan and have prepared a Community Ideas Board which will keep the Association busy for years!

Gartly Community Association is a "work in progress" understanding the time needed to adapt and focus. A new website is being prepared, the car park at the hall is being improved, a new outside shelter with picnic tables provided and possible refurbishment of the hall will take place while plans

are to be developed for the long term. Gartly Community Association are aware of people's concerns and expectations for improved facilities and care in the community.

During 2015 Gartly Community Association enlisted the help of Marr Area Partnership, who assist communities in the Marr area of Aberdeenshire to develop their Action Plans, to ensure they had a rich idea of the current issues and aspirations in today's Gartly community and to encourage and support community action.

## The Community Action Planning Process

The community's interest in developing an action plan was motivated by the newly formed Gartly Community Association (GCA) which was interested in finding out the needs and aspirations of the wider community to inform their priorities for action. Members sought support from Marr Area Partnership (MAP), which explained the benefits of community action planning and offered to work with the local community to develop an action plan. Tap O Noth Community Council were also informed and their Gartly representative, also a member of GCA, offered to lead the process; initially developing then working with a local steering group.

The steering group first met in March 2015. It was supported by MAP and comprised members of GCA, GCC and other volunteers from the community. It was open to anyone who was prepared to contribute to the process, and throughout the process advice was sought and given from others including Gartly School Head Teacher and Community Learning and Development (CLD) team.

The steering group's role was to encourage and enable the involvement of local people in order to ensure that their needs and aspirations would be reflected in the action plan. To do this, the steering group:



- Designed a questionnaire and delivered it to all households in the area in June 2015. This was also made available in local facilities and online.
- Ensured support with the form was available through CLD.
- Publicised the process in order to encourage people to respond and then analysed the survey results (88 responses were received).
- Attended Gartly Primary School to seek the views of the children on what they wanted for the future of their community.
- Organised a community open day in December 2015 to feedback on the information gathered, seek ideas for community projects and enable more input (over 100 people attended of widely mixed demographics).
- Reached out to other identified individuals or groups, including the farming community, to feedback information and enable input.
- Held a drop in coffee morning at Gartly Primary School.
- Collated all of the information and prepared an outline of the themes, issues and potential areas for action.
- Facilitated a further opportunity for community discussion around the draft action plan in April 2016 for local group representatives, support agencies and others interested in supporting the action planning process in order to further develop the outline actions and promote involvement in their implementation.
- Redrafted the action plan, collected images, and wrote the introduction to this document through discussion with various residents and with input from Gartly Primary.
- Presented drafts to Gartly Community Association alongside other outreach work to get final edits and approval of this plan.

## Areas For Action

The actions proposed by the community have been grouped into seven themes and are summarised in the table at the end of this plan. The most significant of these, or those for which potential

solutions are readily achievable, are described in more detail below.

These reflect the situation that was current as the action plan was developed, but will be supplemented by further actions as these are identified over time. Community action planning is a dynamic and progressive process that will reflect the priorities of the various subgroups within the community as they evolve. It is also dependent on the involvement and energy of the community to enable action to be achieved.

## Theme 1: Recreation, Cultural and Social Life

The community (including visitors) values current social activities which are often around events in the hall, including the Tin Hut Music Session, but would like more recreational and social opportunities both to gather residents as a community and to encourage visitors.

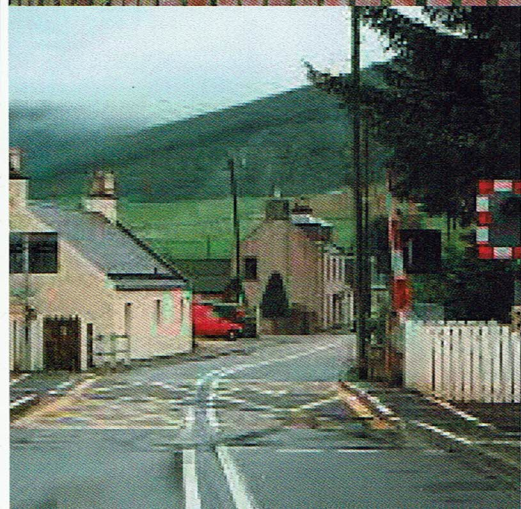
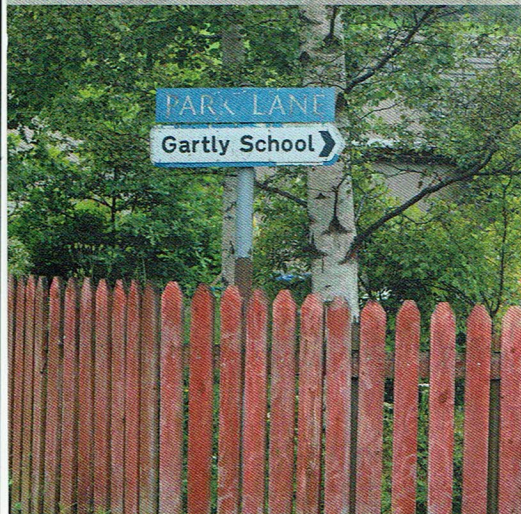
Various regular events and clubs catering for different age groups were suggested including a gardening club, fitness activities, guided walks, arts classes and Scouts. The community widely expressed the need for gathering opportunities i.e. Community Café, Hot Lunch club, youth club.

There was particular enthusiasm about developing an annual summer Highland Games or Show, the latter being more popular with interest in a rare breed, pet, flower and produce show wrapped up in a social gathering.

Several people expressed that they would be willing to support social events and/or activities, but over the process of Action Planning few new volunteers left contact details, so it is understood that further work will be needed to encourage wider community involvement and promote volunteering opportunities.







## Theme 2: Assets and Facilities

There is currently no public, natural gathering space in Gartly village and residents expressed that they would like a shop, pub, eating space or other community hub for social as well as practical reasons.

The residents of the Gartly area and visitors alike expressed that they valued the activities of Gartly Community Hall but there was mixed opinions as to whether the Gartly Hall facility is fit for purpose and sustainable: Is a new hall facility necessary or should the existing building be improved/extended?

This issue seems to be controversial, attracting strong views on both sides and will need further robust exploration. Various developments were suggested for the Hall such as public toilet/showering facilities, bike racks and internet access.

Gartly community recognises the potential value of utilising their natural assets and heritage. Suggested and received with enthusiasm was the development of a Pictish trail with guided walks. Interest was also expressed in exploring revenue raising initiatives such as renewables, micro hydro or biomass schemes rather than windfarms which are more controversial in this area. Finally, the children of Gartly Primary School and adults in the area would like to see improvements to their playpark area.

## Theme 3: Local Communication

The community widely expressed the need for improved information sharing to not only find out and share information about events and social opportunities but to get information about services and other opportunities and to promote the area to visitors. During the Community Action Planning process Gartly Community Association has been developing a website, and on going monitoring of this needed.

Further to this the community expressed improvements and user information for the use of notice boards, and a community newsletter would be valued.

## Theme 4: Telecommunication

Gartly residents widely expressed that both internet access and mobile phone coverage was not adequate in the area, hindering many aspects of life including business and education needs. There was particular frustration that the settlement of Gartly village is bypassed, closely, by fibre optic infrastructure.

## Theme 5: Transport and Infrastructure

Gartly community, although close to the larger settlements of Huntly and Insch, where they rely on essential services and opportunities, feels access to these settlements is hindered through current public transport service provision. Many residents would like to see improvements including reinstating bus links and the Gartly Train Service although the station has recently passed into private ownership.

A number of other factors cause barriers to using the public transport service currently available, particularly around safety of bus stopping points and traveling to bus stopping points. Measures such as safe cycle/walking routes to pick up points, crossing points and bus stops would be highly valued.

Residents recognise the limitations of public transport, and where extending the service would not be practical they would like to see alternative safe routes between settlements by the development and improvement of walkways and paths i.e. green transport routes. Both the A97 and smaller roads are not suitable for multiple users with larger vehicles, cars and heavy machinery impacting on the safety of other users.



For all road users a variety of issues around the safety of the main A97 routes was highlighted by the community including visibility problems due to infrequent verge maintenance, the condition of road surfaces, unsafe junctions and crossing points. To address these the community would like to see traffic flow measures such as speed restrictions, signage and improved general maintenance. It's not clear whether these issues have been previously highlighted to Aberdeenshire Council.

In Gartly village itself the main concern is parking around the school which is widely deemed to be inadequate and unsafe, but other issues such as winter maintenance and generally safer walkways were also highlighted. Winter maintenance was also mentioned regarding some side roads in the wider area as was parking at Gartly Hall.

## Theme 6: Environment

There was a strength of feeling from Gartly community that the landscape is important, with people enjoying peaceful nature and green spaces and expressing that they would like to see wildlife and biodiversity protected and improved, but also capitalise on and have good access to the environment. It was suggested that protecting and developing walkways, trails and wild spaces, would enhance the enjoyment and health of residents and also help promote the area as a visitor destination. It was felt that better communication with absent land managers, particularly the Forestry Commission Scotland, could support the wider community to more confidently access green spaces.

Residents, including those who have a role in land management through farming, reported that the Gartly area has an issue with invasive species (particularly Giant Hogweed) and feel more needs to be done to manage this. Some residents mentioned concerns around dumping or littering and its visual impact, but more generally the

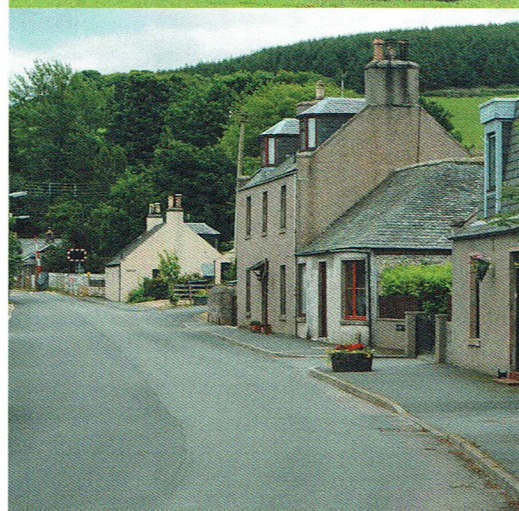
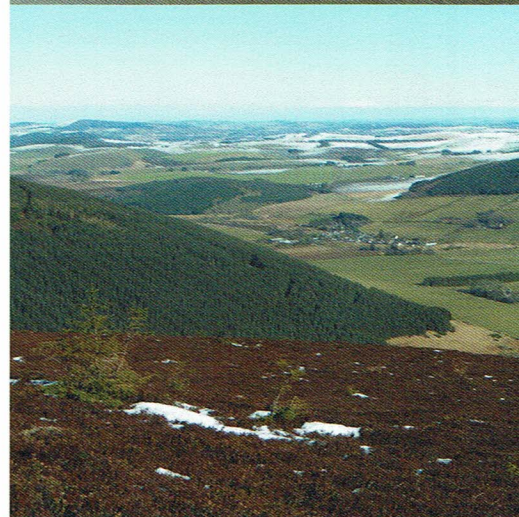
community expressed a desire to improve and protect the look of the area.

Dog waste was highlighted as an issue in Gartly village, particularly from children playing near the school, who expressed the need for signage and dog waste facilities in strategic locations.

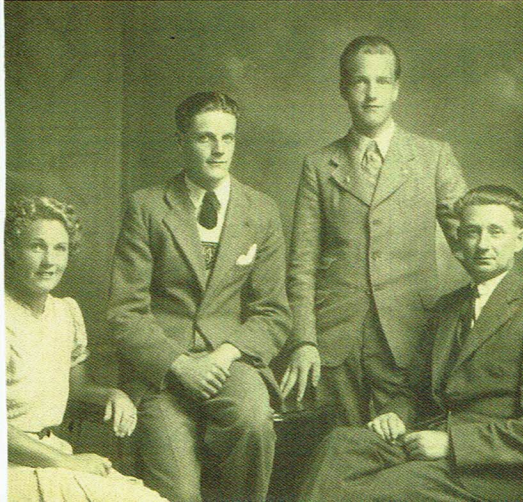
## Theme 7: Housing, Health and Education

Some respondents felt that there was a need for more affordable housing in the area, and a number would like to see suitable accommodation for the elderly such as retirement housing. Issues were highlighted around care in the community with a significant portion of survey respondents perceiving that there is inadequate provision to meet their current or future needs, both for the elderly and younger population with disabilities, although limited detail was gathered to back up this perception. Therefore it was not clear whether there was significant experience of this, and if so, what the gaps in support are. Accessing health care appointments was also seen as an issue.

Although many expressed a desire or need for Adult Education Classes again, it was not clear what sort of provision would be valued or needed, and further work to explore this is recommended. It was however clear that the community would like more information about what could be or is available regarding Adult Education. The Gartly community values the local Primary School, and the Primary School pupils and staff have reported feeling more part of the community recently through links made by the Gartly Community Association and the associated activities of the community action planning process. Some Gartly parish residents are dissatisfied that they fall out of the catchment of Gartly Primary, and although their children could still enrol at the local school, they would not be entitled to free transport provision through Aberdeenshire Council.









This booklet is one of a series produced by Local Rural Partnerships for a number of communities in Aberdeenshire.

This initiative is sponsored by Aberdeenshire Community Planning Partnership and run by Aberdeenshire Local Rural Partnerships. The aim is to provide community action plans in an attractive, easy to read, professionally printed format.

This information can now guide the community and Community Planning Partners in drawing up detailed action plans to implement the top priorities as well as addressing the other issues which have been identified. For each priority or issue this will involve agreeing who should be involved, what resources will be needed and target dates for completion. It is hoped that this process will be driven by representatives of the community with support - moral, technical and financial - from the relevant Partners.

It is important that this booklet is seen by all concerned as an account of the community's views at the time of the latest consultation, and that it will have to be regularly reviewed and updated. As some projects are completed, other issues will arise and take their place in future versions of the community plan.

We recommend that this Plan has a maximum life of three years.

**Thanks are due to all of the Gartly Community who submitted their views, checked and rechecked the issues and discussed the actions.**

**Thanks also to the volunteers who researched, wrote and checked the introduction, past and present text and to all those who submitted the fabulous photos. Also thanks to the agencies who supported our Community to undertake this process.**

## MARR AREA PARTNERSHIP

Ground Floor • Albert Memorial Hall • Ballater • AB35 5QB

T: 07585 621549 • E: [info@marrareapartnership.org.uk](mailto:info@marrareapartnership.org.uk)



Aberdeenshire  
Community Planning Partnership

[www.ouraberdeenshire.org.uk](http://www.ouraberdeenshire.org.uk)