

# Prosiect Cyfleusterau Cymunedol Nantglyn

## Nantglyn Community Facilities Project



# Gyda Diolch / With Thanks

Funding for this project has been secured by the not-for-profit rural development company Cadwyn Clwyd, with support through the Community Innovation Denbighshire project, which is funded by the UK Government through the UK Community Renewal Fund.





# Croeso / Welcome

Pwy ydym ni... / Who are we...



## YOMA Architecture

**Amber Yorke / Architect** BA(Hons) DipArch MArch ARB RIBA

**Nick Marriott / Construction & Engineering** MCIAT C.Build E MCABE MCIQB MCFI

- Live & work in Bylchau
- Amber spent childhood in Nantglyn
- Family connections to village
- Personal & Community users of Church House
- Close connection with community – understand the rhythm of life here!

# Cyflwyniad i'r prosiect / Introduction to the project

## 2019: Initial community consultation

Cadwyn Clwyd, in partnership with Nantglyn Community Council, commissioned a community consultation to look at existing facilities and provision, establishing the requirements of the local community.

## 2020/21: Phase II Feasibility Study

Cadwyn Clwyd and Nantglyn Community Council commissioned Cynlas Cyf and Dewis Architecture to undertake a “second phase” feasibility study, building upon the work undertaken in 2019. This work was commissioned to further consider the two options, and offer the most appropriate and feasible route forward for the community.

# Casgliad Astudiaeth Cyfnod II / Conclusion of Phase II Study

**Show field site ruled out due to planning constraints.**

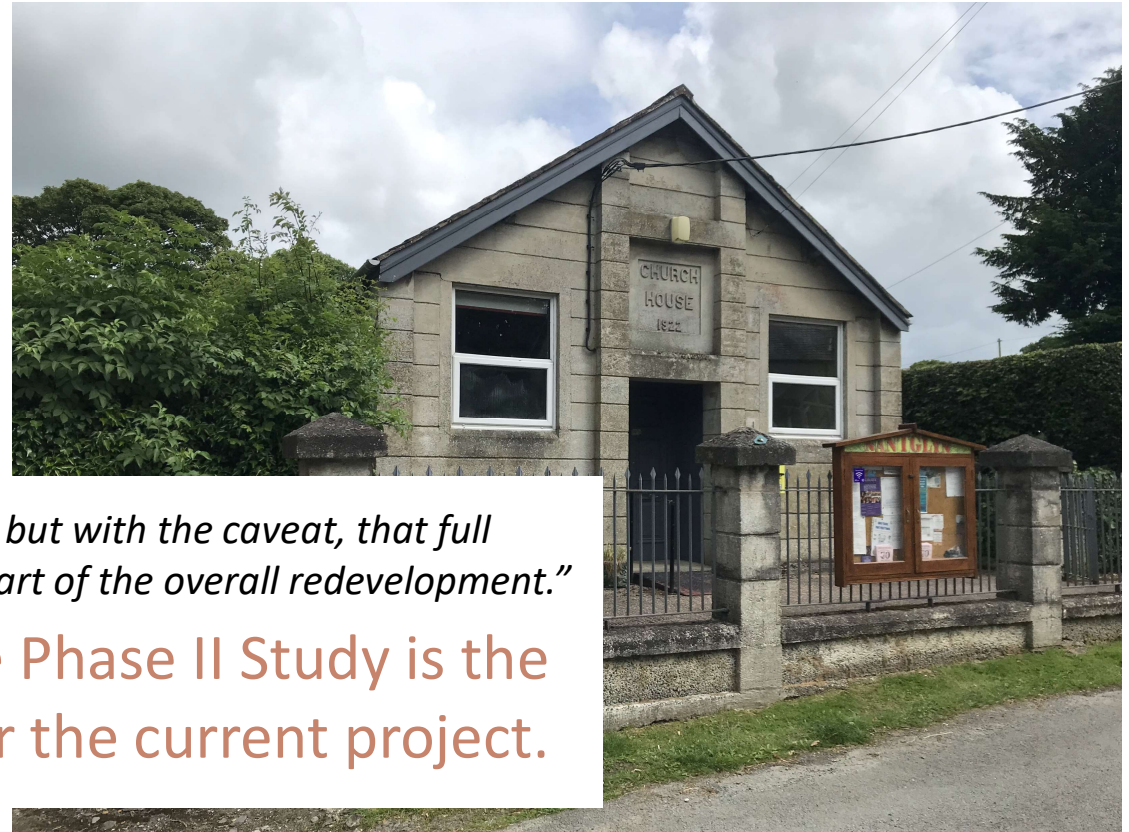
**Refurbishing current Church House ruled out due to:**

- High cost with no gain in area / flexibility to expand.
- Compromised accessibility.
- Impractical layout and aesthetically unappealing.
- Highly energy inefficient / poor fabric.
- Limited remaining lifespan.

**The Phase II Study recommended the option to:**

*“Demolish existing building – New build on existing site, but with the caveat, that full consideration be given to retaining the front façade as part of the overall redevelopment.”*

**This recommendation from the Phase II Study is the starting point, or ‘Brief’ for the current project.**

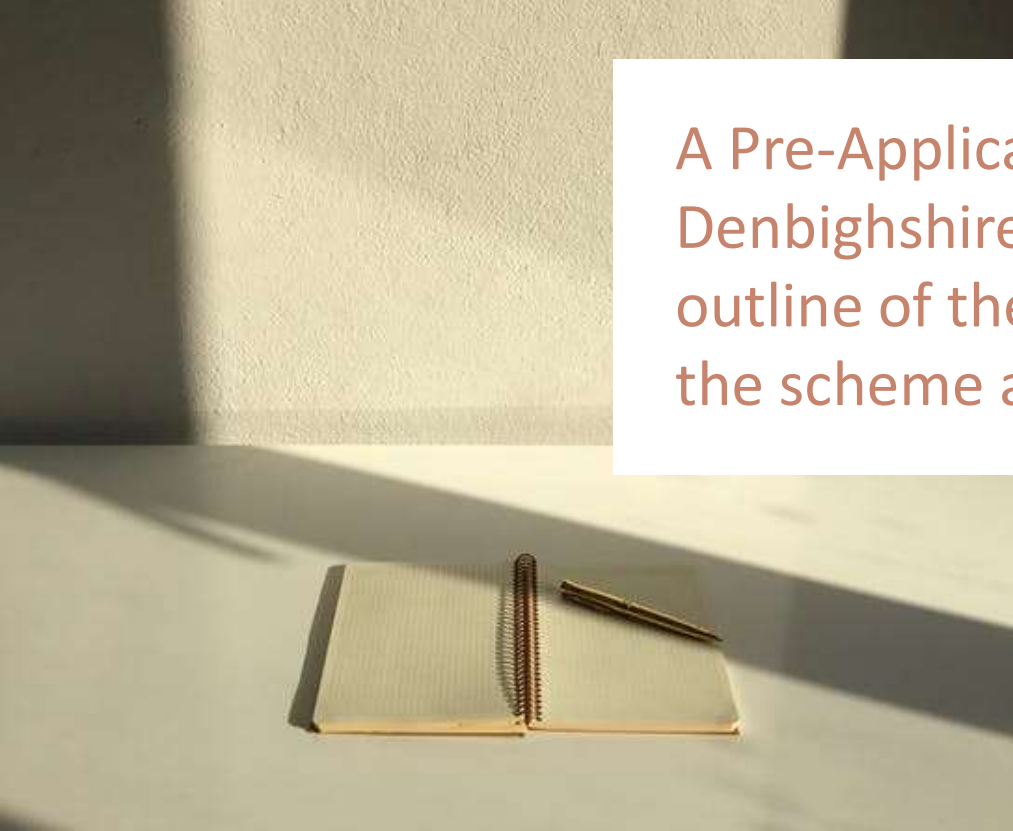


## Camau Nesaf... / Next Steps...



This phase of the Nantglyn Community Facilities Project is the development of the Brief into an architectural design solution, to be submitted for planning approval by the end of September 2022.

Ond cyntaf.../ But first...



A Pre-Application Enquiry will be submitted to Denbighshire County Council, with a concept-level outline of the proposals, to gauge the likelihood of the scheme achieving planning permission.

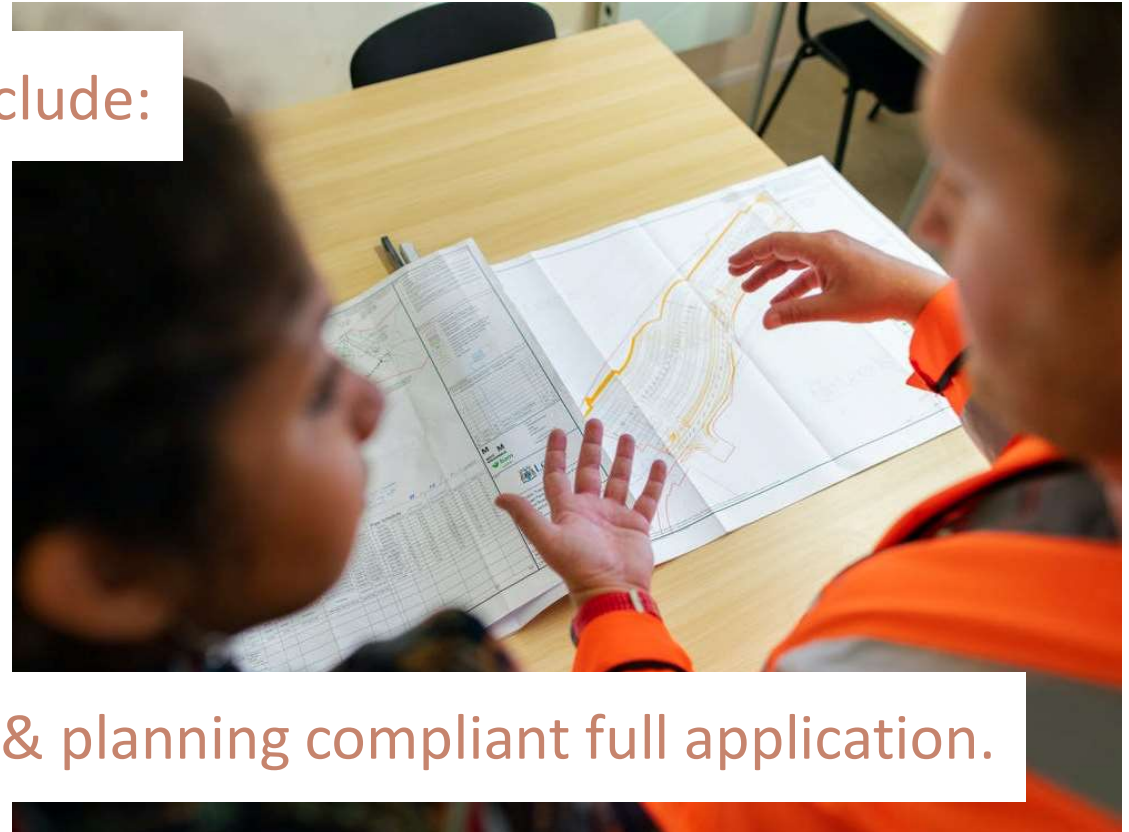
This presentation reflects a pre-application enquiry level of information...



# Ymholiad Cyn Ymgeisio / Pre-Application Enquiry

## The Pre-Application response will include:

- Planning history of site.
- Relevant development plan policies against which the development proposal will be assessed.
- Relevant supplementary planning guidance.
- Any other material planning considerations.
- Initial assessment of the proposed development, based on the information above.



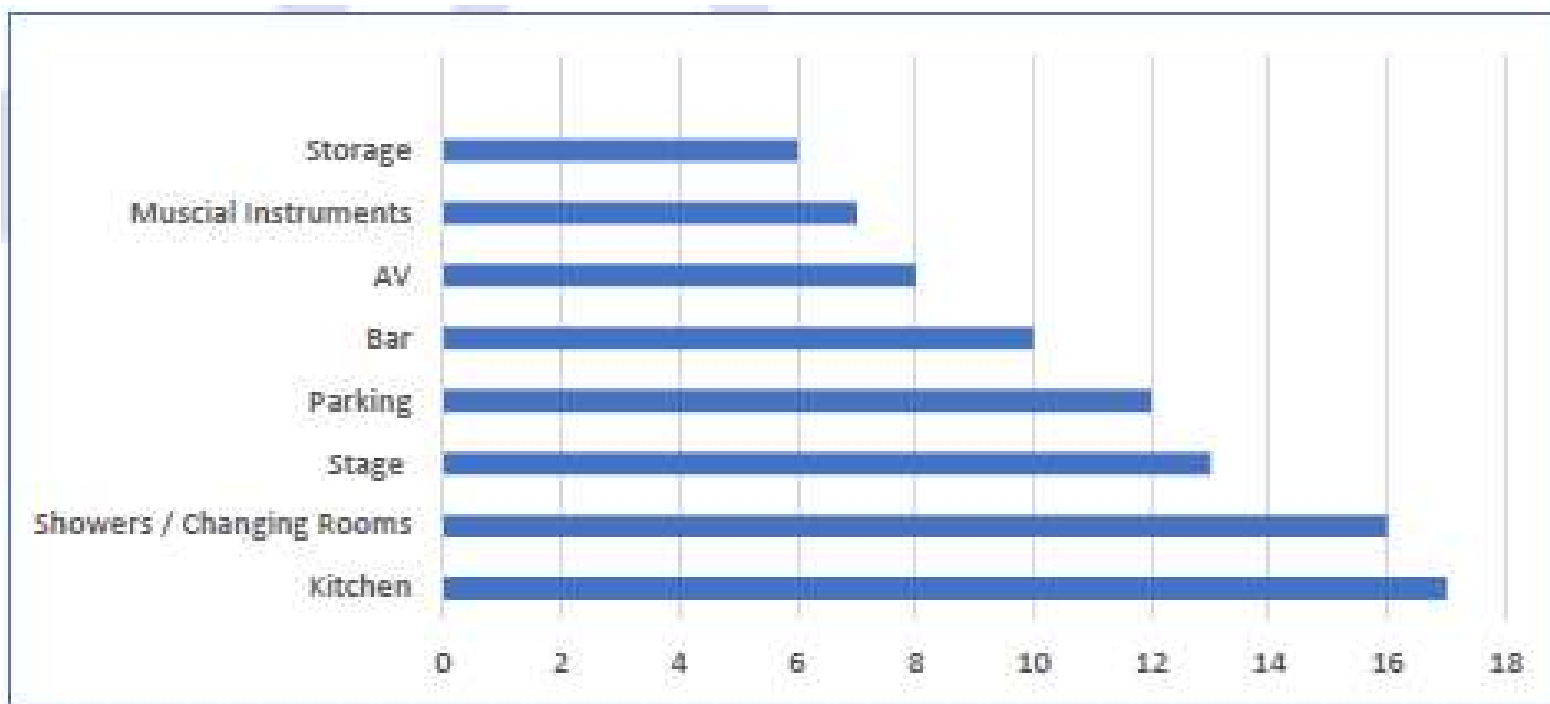
Which will help shape a robust & planning compliant full application.

# Y daith ddylunio / The design journey



# Dechrau'r broses ddylunio / Starting the design process

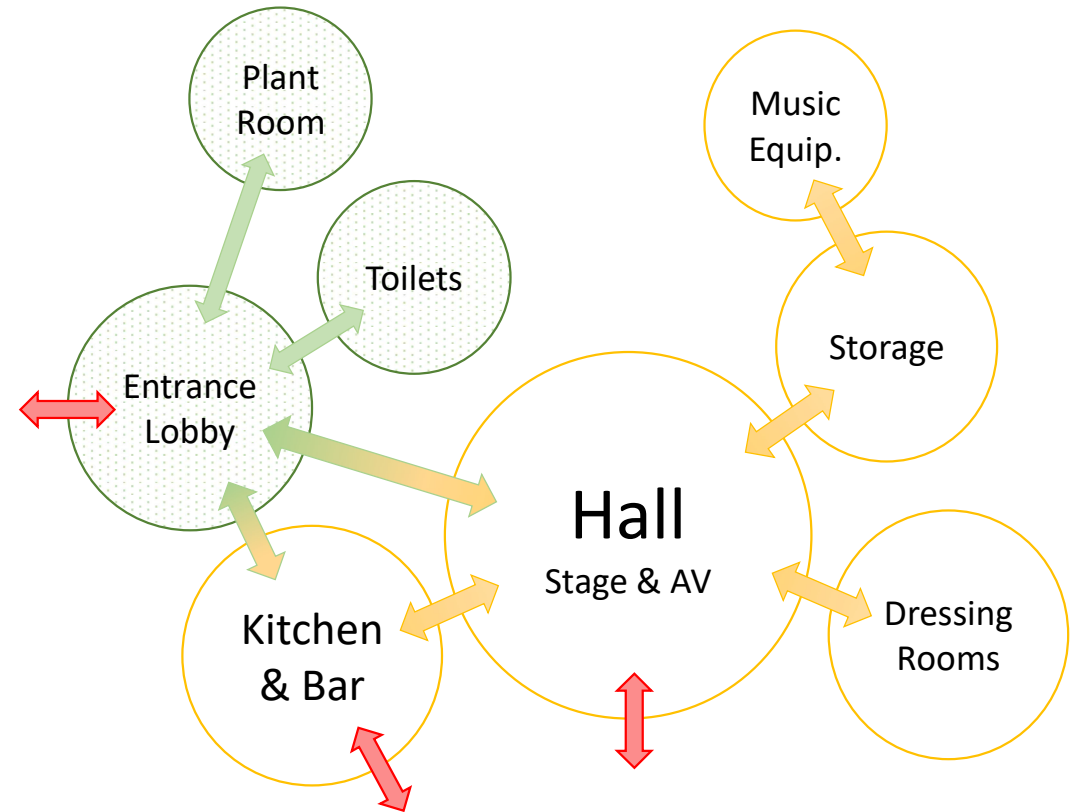
## Primary facilities requested by the community:



# Rhestr Llety / Schedule of Accommodation

## Primary Facilities & Adjacencies:

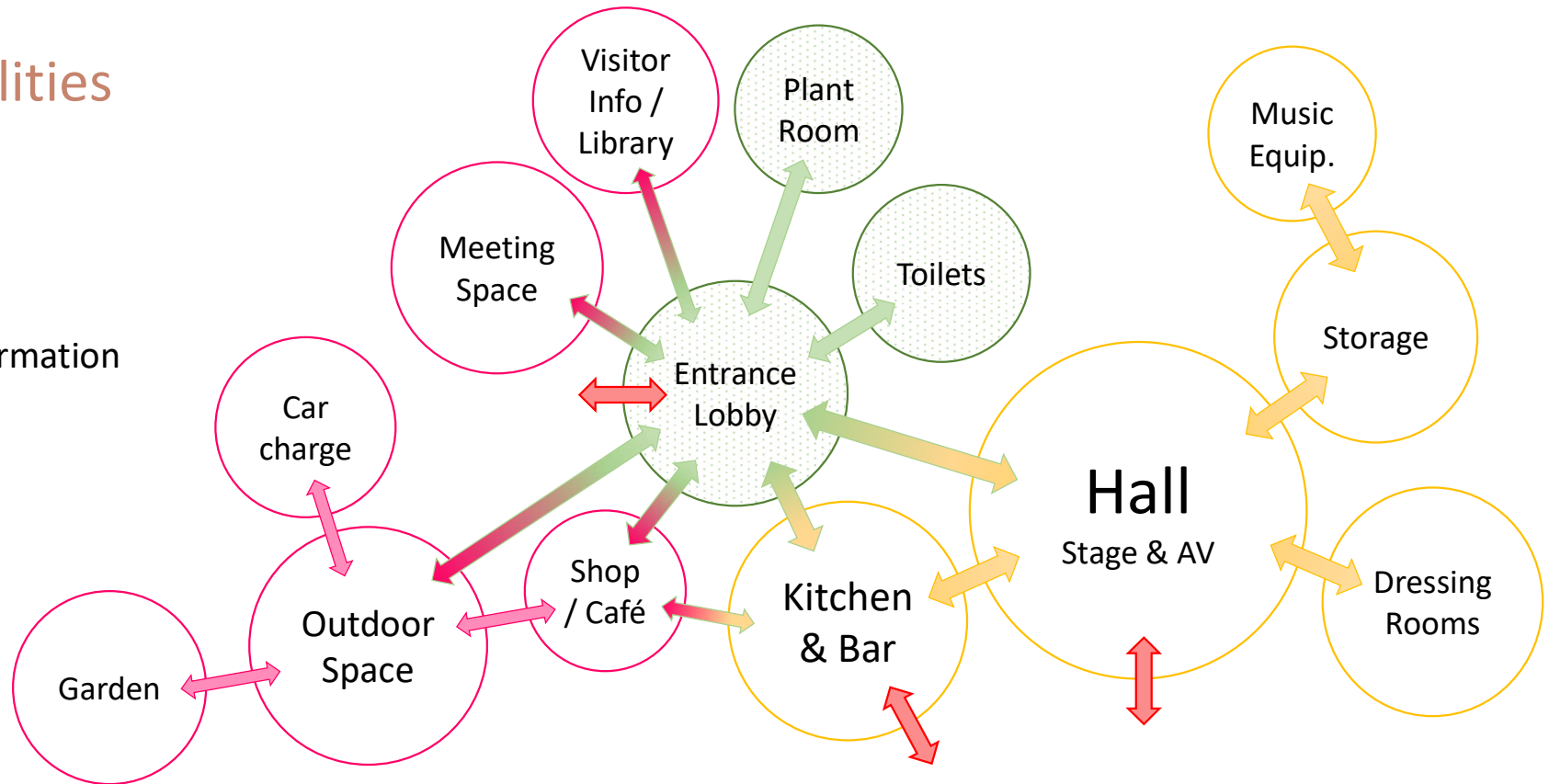
- Main Hall with stage & Audio Visual (AV)
- Dressing Rooms
- Kitchen & Bar
- Storage
- Musical Instruments
- *Entrance Lobby*
- *Toilets*
- *Plant Room*
- *External access / egress*

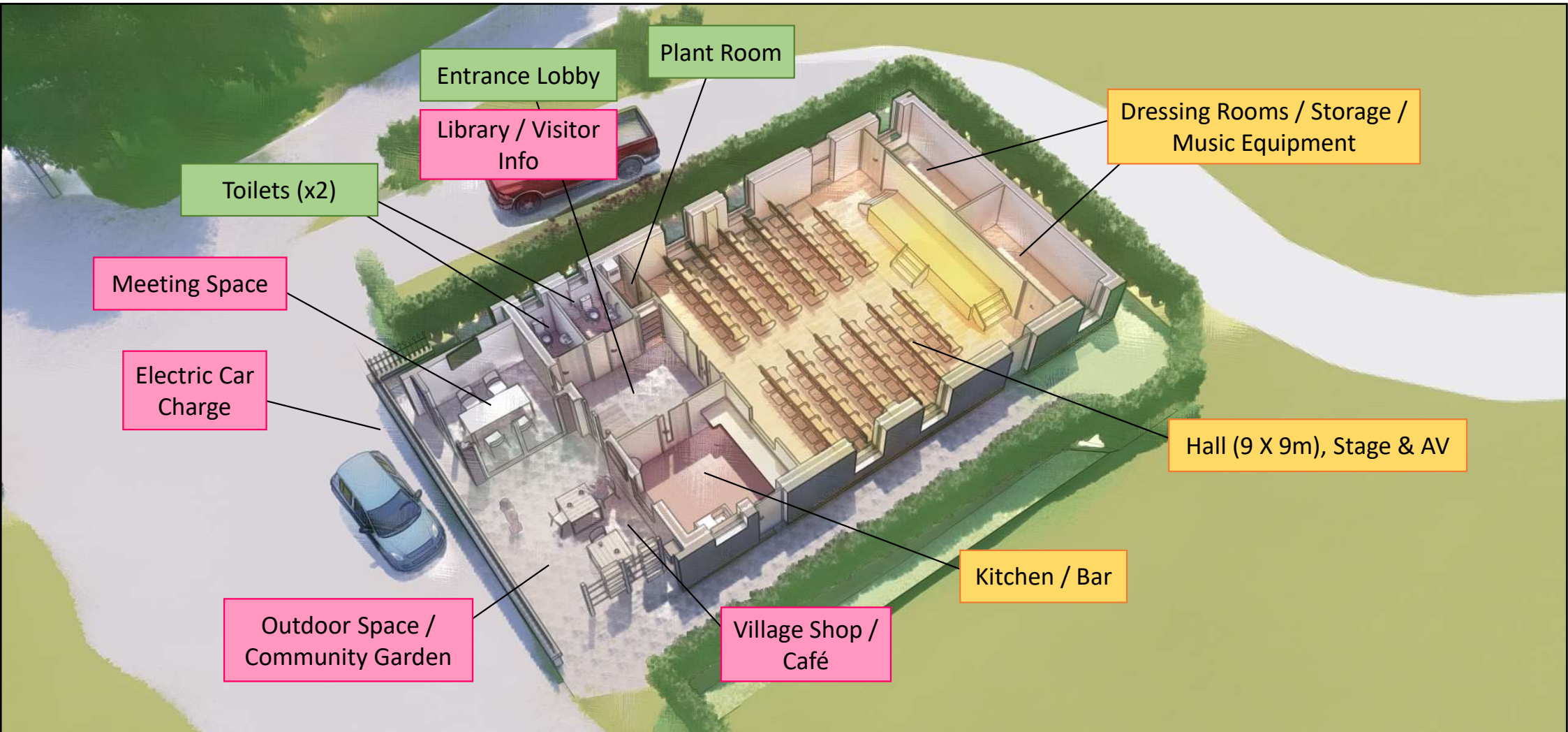


# Rhestr Llety / Schedule of Accommodation

## Secondary Facilities & Adjacencies:

- Meeting Space
- Village Shop / Café
- Library / Visitor Information
- Outdoor space
- Community Garden
- Electric car charge





Entrance Lobby

Plant Room

Library / Visitor Info

Dressing Rooms / Storage / Music Equipment

Toilets (x2)

Meeting Space

Electric Car Charge

Hall (9 X 9m), Stage & AV

Outdoor Space / Community Garden

Kitchen / Bar

Village Shop / Café

## Lleoedd amlbwrpas / Flexible spaces

With limited space to increase the building footprint, the spaces need to offer flexibility and multi-purpose uses.



# Lleoedd amlbwrpas / Flexible spaces

## Hall, Stage & Audio Visual

- Stage shows & Concerts
- Film showings
- Live music
- Line dancing
- Indoor sports & Fitness classes
- Quiz nights
- Wedding functions
- Community meals
- Craft fairs & Exhibitions
- Art & craft groups
- Drama groups
- Music lessons
- Community Choir
- Children's Parties
- Youth Club
- Christmas parties

## Kitchen / Bar

- Self-catered events
- Community Café
- Licensed Bar
- Cookery classes
- Coffee mornings

## Meeting Space

- Business meetings
- Help & Advice clinics
- Hot-desk office space
- Smaller group activities
- Welsh language classes
- Creative writing classes
- Bi-fold doors allows space to merge into outdoor space

## Outdoor Space

- Outdoor café / bar area
- Community Garden
- Walking groups
- Cycling groups
- Gardening classes
- Community 'self-serve' shop
- Local produce collection
- 'Farm to table' style meals
- Foraging workshops
- Children's messy play
- Dog friendly space
- Tourist / Visitor information
- Community notice board (digital?)



# Hygyrchedd / Accessibility

Level 1 Access

Always open

Level 2 Access

Generally open (managed?)

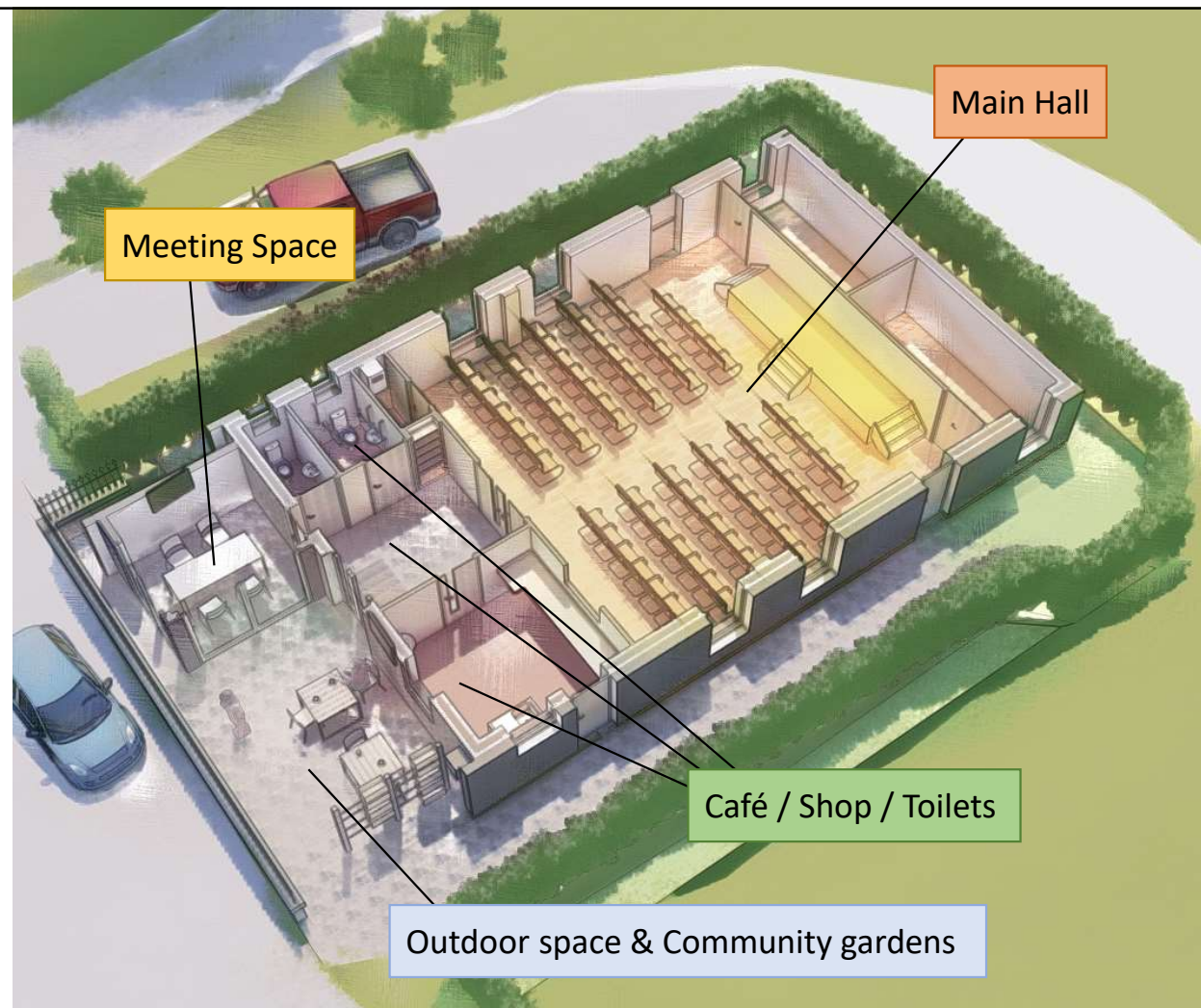
Level 3 Access

Bookable Meeting Space

Level 4 Access

Bookable Main Hall

Allowing this flexibility in access allows the building to be used more efficiently in terms of power, lighting & heating.



# Dyluniad yr adeilad / The building design

## Key considerations:

- Conservation area
- Mature hedgerows to boundaries
- Residential neighbours
- Established street frontage
- Access required around building for maintenance
- Adjacency to road
- Safe space to 'gather' outside building
- Limited space to expand
- Limited opportunity for designated Church House parking
- Maintaining front façade restricts opportunity to maximise building footprint
  
- Increased natural light
- Renewable energy sources
- Sustainable construction and building management



# Dyluniad yr adeilad / The building design

Canopy over front 'arrival' space to create a more useable all-weather space. Meeting room sits partly under canopy, with scope to open bi-fold doors and create a larger outdoor function area.

Highly insulated 'wrap-around' building envelope.

Maintaining the existing building height & form for the main body of the building.

PV Panels.

Rooflights and solar tubes maximise natural light to reduce reliance on artificial light.

Opportunity to introduce an electric car charge point. Cycle stands to also be considered.

Existing boundary line maintained, with a new stone wall proposed to follow the rhythm of stone walling seen from the bridge up the main street.

## Dylunio i adeiladu / Design to construction

As a business we consider the method of construction during the design process to ensure that the design can be brought to life.

The site has specific issues to consider along with the fabric of the building.



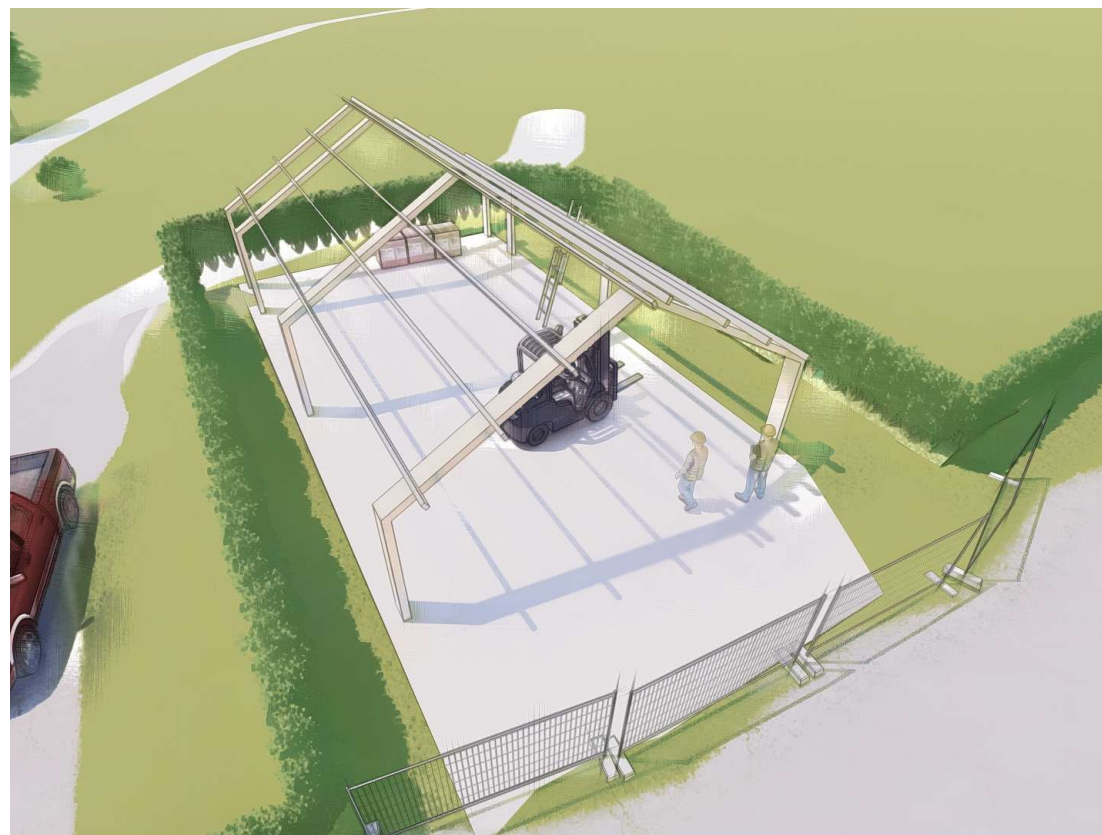
# Constraintau'r safle / Site constraints

## The Site:

- Limited space
- Residential neighbours
- Central location close to existing road network
- Environmental impact. Trees / Stream / wildlife

## Construction considerations:

- No space to store materials
- Consideration of 'offsite construction' to minimise impact during construction phase
- Reduce site traffic



# Dulliau Adeiladu Modern / Modern Methods of Construction

## 7 areas for consideration in MMC process

- **Category 1** – Pre-Manufacturing - 3D primary structural systems
- **Category 2** – Pre-Manufacturing - 2D primary structural systems
- **Category 3** – Pre-Manufacturing - Non systemised structural components
- **Category 4** – Pre-Manufacturing - Additive Manufacturing
- **Category 5** – Pre-Manufacturing – Non-structural assemblies and sub-assemblies
- **Category 6** – Traditional building product led site labour reduction/productivity improvements
- **Category 7** – Site process led labour reduction/productivity improvements

This framework was established by a specialist sub-group led by Mark Farmer of Cast Consultancy, the chair of the wider MMC working group, supported by representatives of Buildoffsite, Homes England, National Home Building Council (NHBC) and Royal Institute of Chartered Surveyors (RICS).

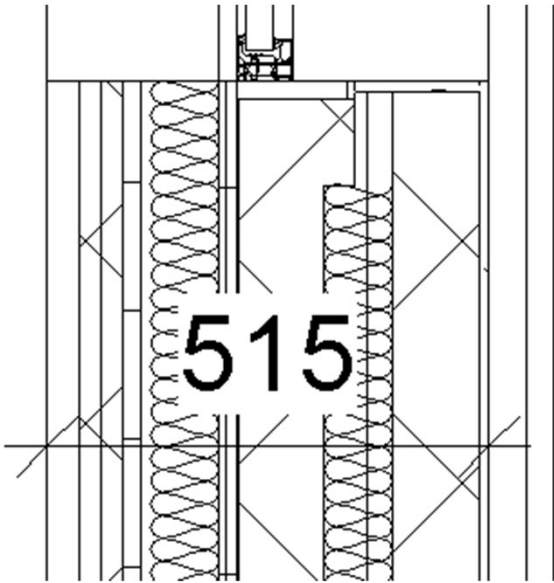
## Y ffrâm adeiladu / The building frame

Materials to consider for the frame include timber from sustainable sources and recycled steel.



## Ffabrig & Inswleiddio / Fabric & Insulation

Natural Insulation (Sheepwool / Hemp mix) with fabric build up above 500mm to increase U values and enhance thermal performance.





# Cynaliadwyedd / Sustainability

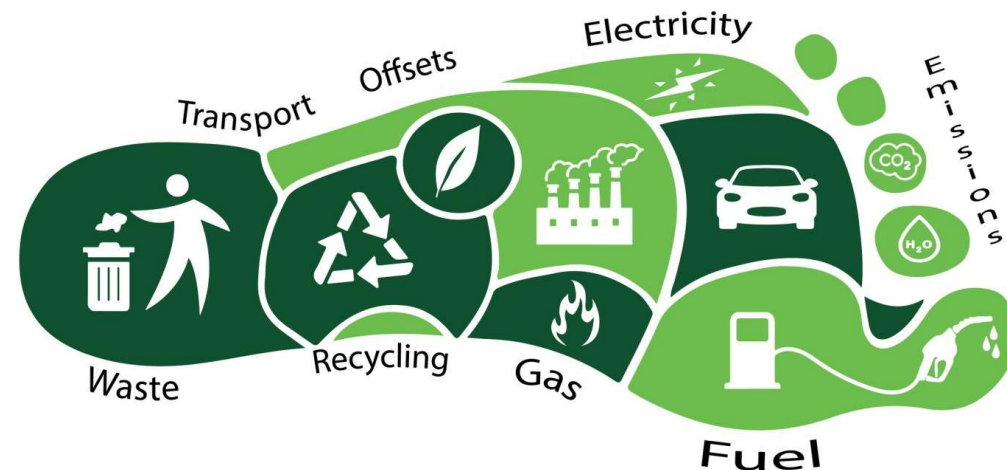
## Considering sustainability in operation & facility management.

### Operational:

- Photovoltaic / Solar Panels
- Grey water usage
- Air-source heat pump
- Sustainable building materials
- Door & window selection
- High air-tightness
- Thermal comfort (heating & Cooling)

### Facility Management:

- Digital Twin analysis to calculate running costs per annum
- Robust detailing to ensure quality of construction for lifecycle of building
- Emphasis on Off site construction



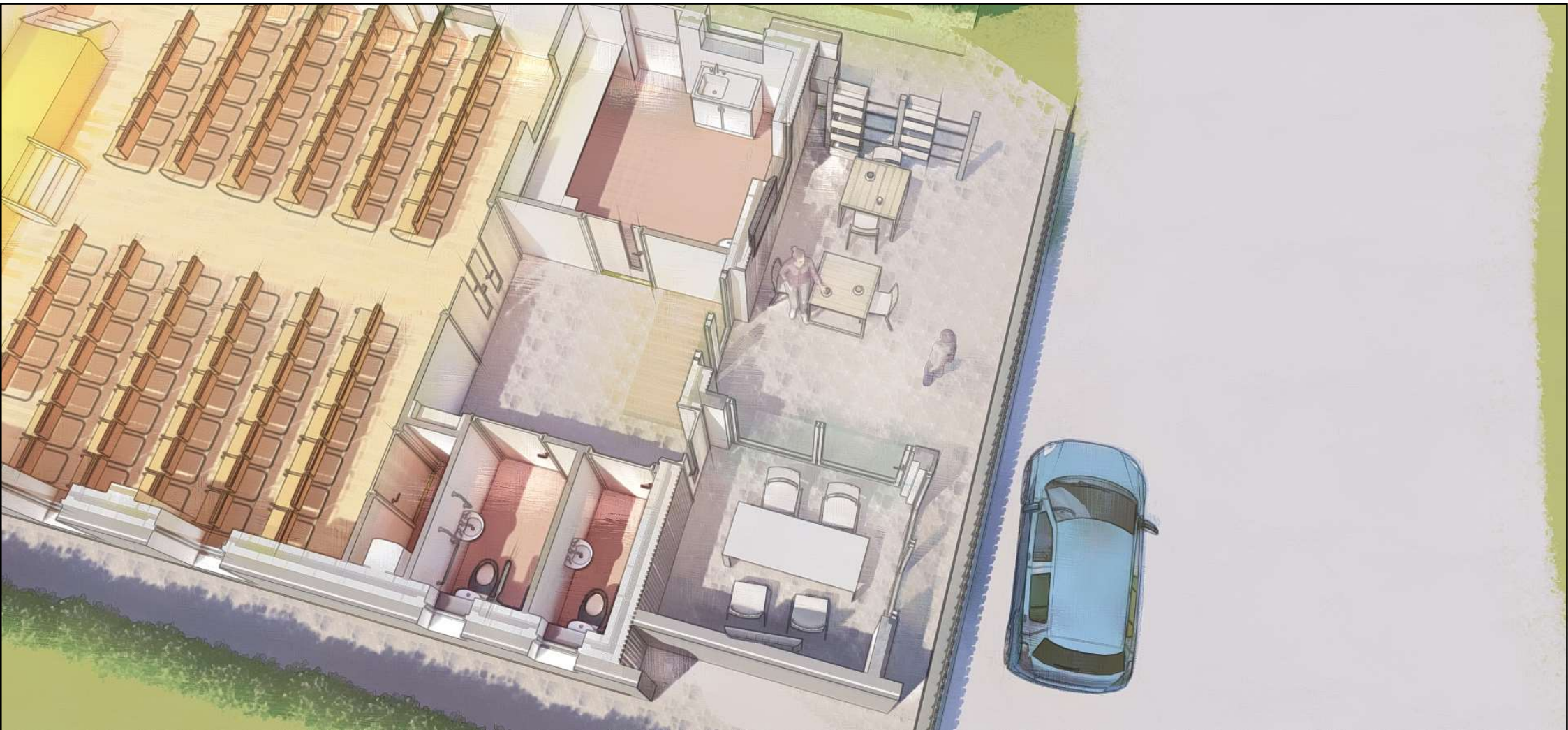
# Delweddau / Images

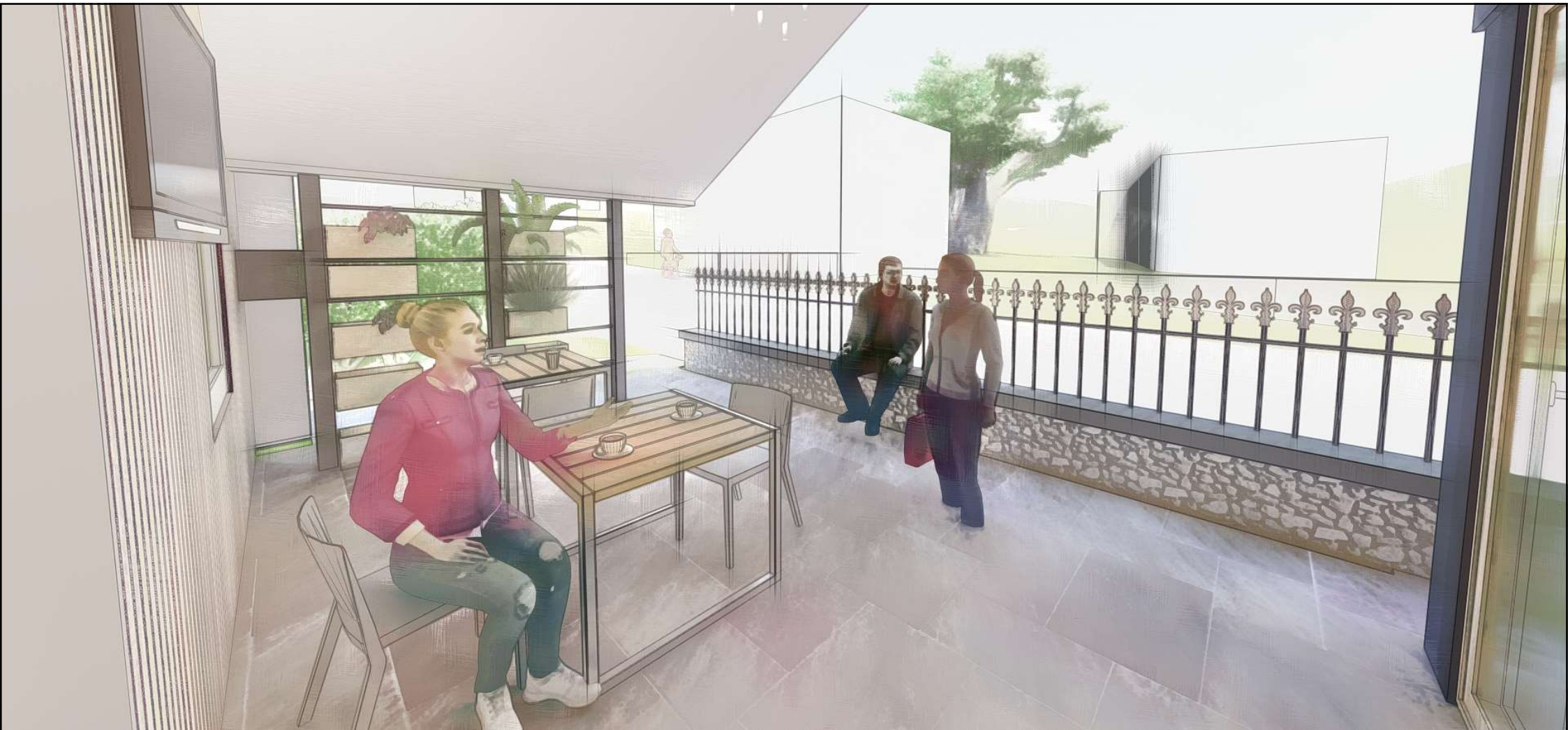






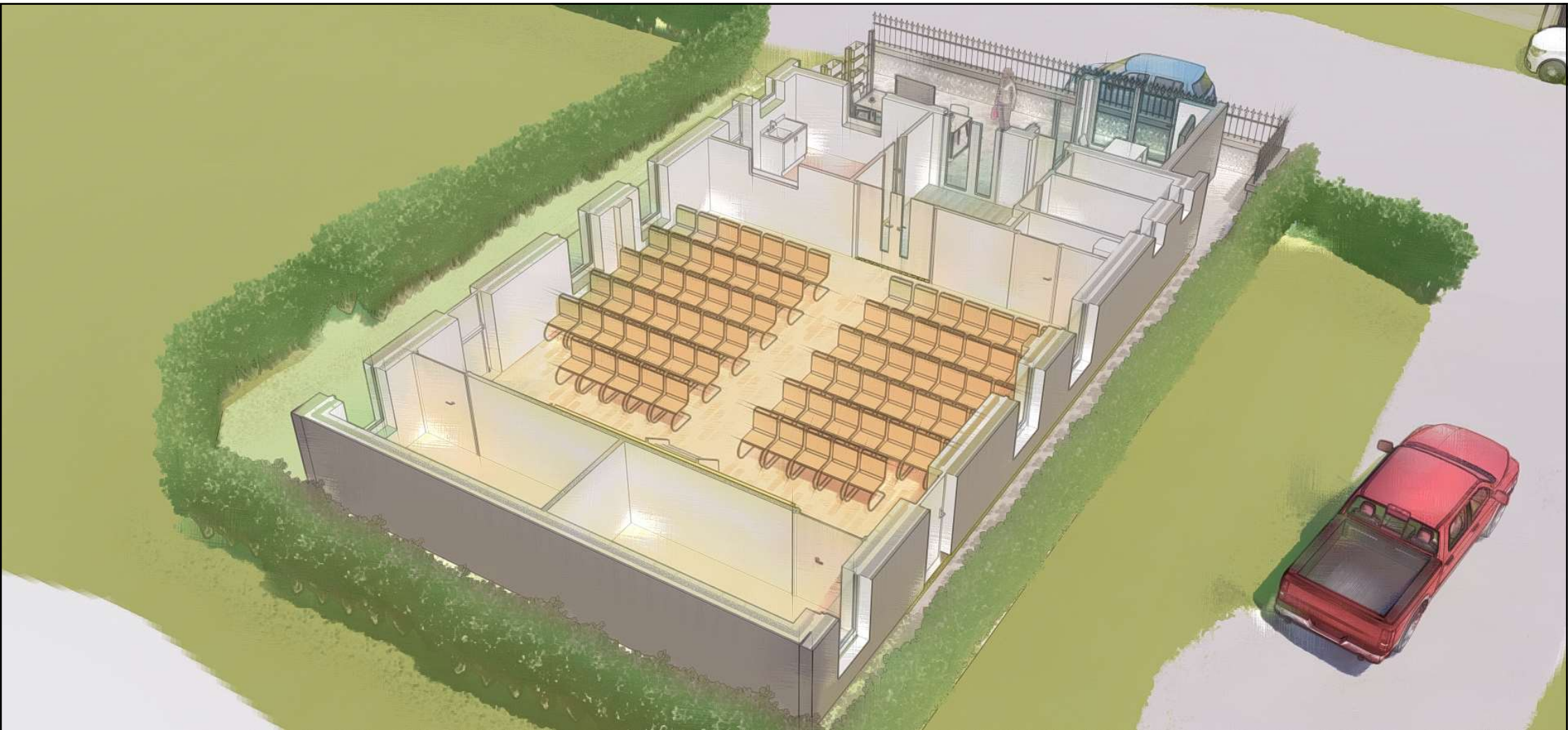










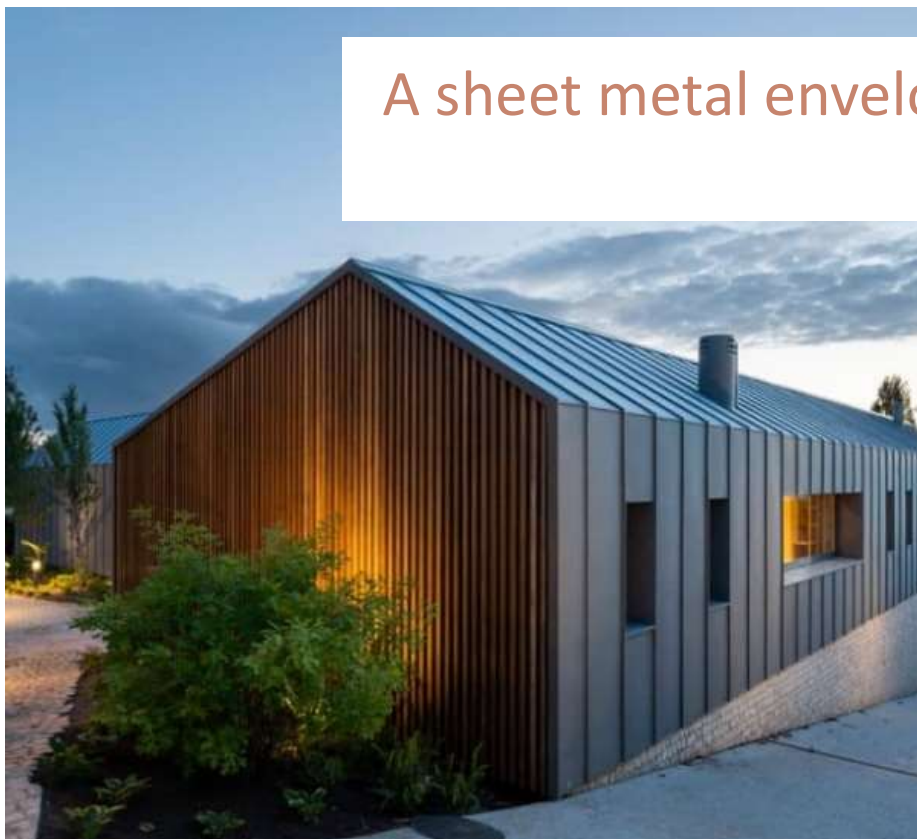






## Defnyddiau allanol / External materials

A sheet metal envelope creates a robust, low-maintenance shell, and creates a modern agricultural aesthetic.



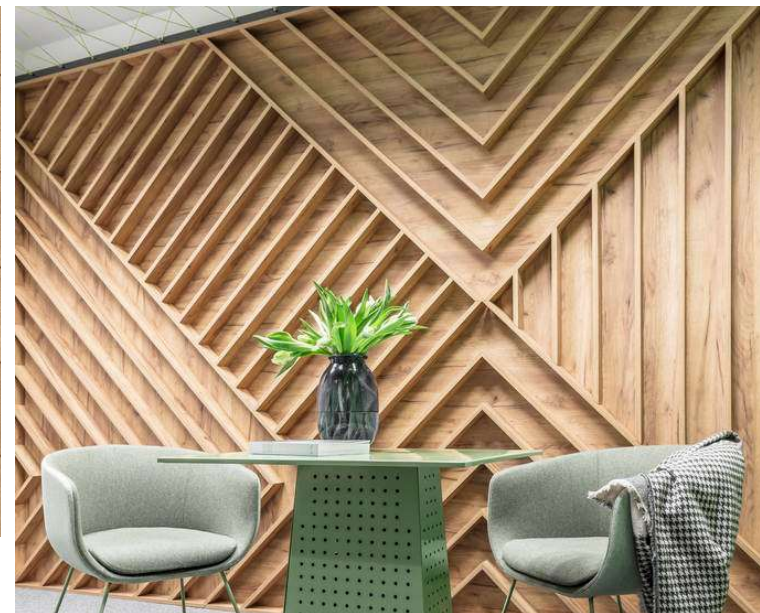
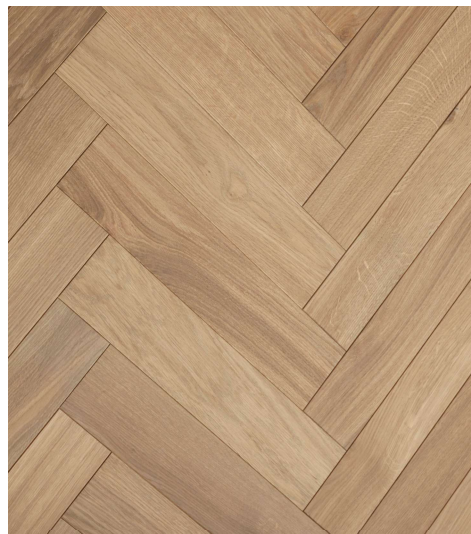
## Defnyddiau allanol / External materials

Focal front elevations detailed in slate and timber.



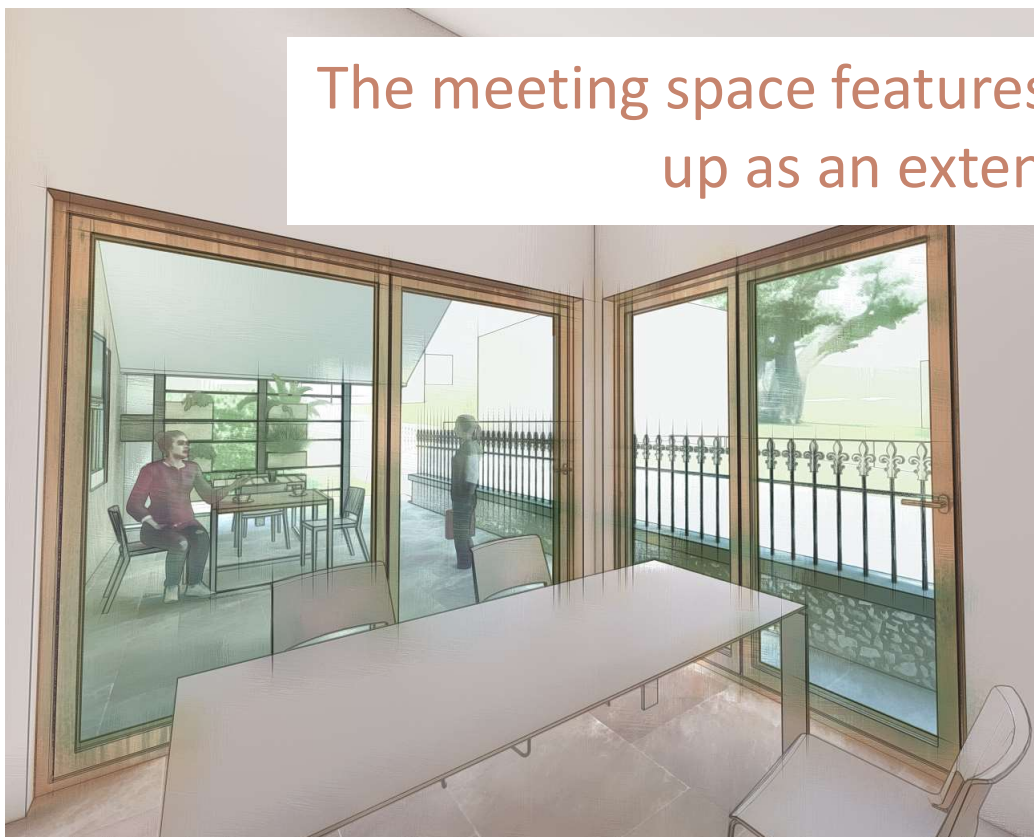
## Defnyddiau mewnol / Internal materials

Internal materials focus on quality, sustainability and longevity with local sourcing of materials & tradespeople.



## Syniadau dylunio cynnar / Early design ideas

The meeting space features bi-fold doors, allowing it to be opened up as an extension of the outdoor café / seating area.



## Syniadau dylunio cynnar / Early design ideas

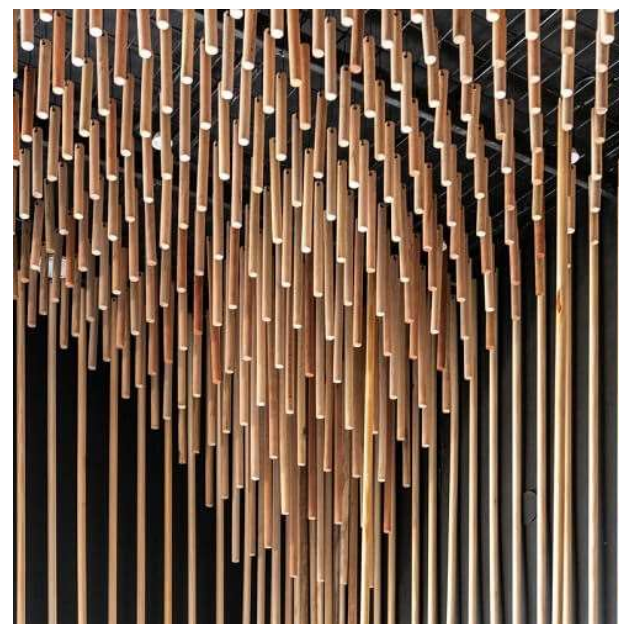
A vertical community garden brings nature & biodiversity into the space, creating an interactive & dynamic display.





## Syniadau dylunio cynnar / Early design ideas

A focal entrance lighting canopy adds depth & visual interest to the principal elevation, giving this space its own identity



Diolch am eich amser / Thank you for your time  
Unrhyw cwestiynau? / Any questions?

