

# EXPLORE



FREE Week One  
From Monday 11th  
April  
Including David Rosier  
on Oriental Textiles

**Season 3**  
**2015-16 programme**

## Explore Season 3 Programme 2015-16

The Season 3 programme follows on the theme of 'Consequences' including history walks, an art exhibition tour and a theatre visit. The first sessions in Week One will be given by oriental textile expert, David Rosier.

**If you're new to Explore why not come and try the programme?**

**There are two options:**

**Attend any or all sessions in FREE Week One starting Monday 11th April**

**Click [HERE](#) to see the Week One programme including Oriental Textiles by David Rosier**

**Or arrange a FREE taster session by emailing [weareexplore@gmail.com](mailto:weareexplore@gmail.com)**

You need to join Explore in order to attend the sessions. Details of how to join Explore are available on our website: [www.weareexplore.org.uk](http://www.weareexplore.org.uk) Most of our sessions require no advance booking—just turn up. However, for study groups, practical art and some walks, we do need to manage attendances. These sessions (only) have specific booking instructions in this programme.

If you are disabled and would require a helper in order to take part in Explore, the helper can attend without charge.

If you would require financial assistance in order to take part in the Explore programme, you are encouraged to apply to the [S.Y. Killingley Memorial Trust](#).

## Explore Season 3 Programme 2015-16

Congratulations to the programming team -

Art History and Design: Jack Massey and Helen Watson

Narratives (Literature, cinema and Music) : Rita Prabhu and Angela Young

Perspectives (Science and Mathematics): Christine BurrIDGE, Maria Goulding, Mike Leddra and Joy Rutter

Culture & Society (History and Archaeology): Joy Rutter and Kath Smith

Philosophy: Joy Rutter

with direction from Bronwen Calvert & Colm O'Brien.

Front cover image is from the Wendy and David Rosier Collection of Chinese Imperial Textiles.

We are also grateful to [Ampersand Inventions](#) for our accommodation at Commercial Union House.

*'It is not knowledge, but the act of learning, not the possession but the act of getting there, which grants the greatest enjoyment.'*

Carl Friedrich Gauss (1777-1855)

# EXPLORE

## @ the Late Shows

**‘Outer Space’**

**FREE**

**Saturday 14th May**

**19.00 to 23.00**

**Venue : Ampersand  
Inventions**





# EXPLORE

## @ Sunderland History Fair

**FREE**

**Saturday 4th June**

**10.00 to 16.00**

**Venue :**

**Quayside Exchange**

**197 High Street  
East Sunderland**

**SR1 2AX**



## Explore Season 3 2015-16 Overview

Week of		11th Apr	18th Apr	25th Apr	2nd May	9th May	16th May	23rd May	30th May	6th Jun	13th Jun
Mon	morning		Ian Ground 'Wittgenstein II' (not 2nd or 30th May)								
	morning	Morning art series on the theme of 'Consequences' (not 2nd or 30th May)									
	lunch	Lunchtime art series on the theme of 'Consequences' (not 2nd or 30th May)									
	afternoon		Peter Quinn 'Renaissance Studies' (not 2nd or 30th May)								
	evening						Malasree Home 'The Anglo-Saxon Chronicle : Identities & Conflicts' (not 30th May)				
Tues	morning	Latin at the Lit & Phil									
	morning		Beatrix Groves 'Cutting Edge : A Look at Recent Advances in the Sciences'								
	morning	Morning narratives series on the theme of 'Consequences' (not 24th May)									
	lunch	Lunchtime narratives series on the theme of 'Consequences' (not 24th May)									
	afternoon	Michael Leddra 'Variety is the Spice of Life'									
	afternoon		Elayne Chaplin : Film 'Tears & Lies'					Diana Scott 'What Psychologists could learn from Anthropologists'			
	evening	Mike Green 'The Music of Consequences'							Yukiko Kikuchi 'Is Music Just for Us?'		
Wed	morning	Tony Barrow 'Bred to the Sea Part II'						Gavin Hardy 'Modern Techniques in Botanical Science II'			
	morning		Michael Ayton 'Virgil's <i>Aeneid</i> and English Poetry"						Northern Stage		
	lunch	Lunchtime perspectives series on the theme of 'Consequences'									
	afternoon		Rachel Lister 'Short Story Cycles II' study group (not 25th May)								
	afternoon				John Griffiths 'Great UK Cities'						
	evening				North East Ancient Egypt Society 'Hieroglyphics' (not 1st June)						
Thurs	morning	Morning culture & society series on the theme of 'Consequences'									
	morning		Laing tour								
	lunch	Lunchtime culture & society series on the theme of 'Consequences'									
	afternoon				Bronwen Calvert 'Making us Laugh: Reading Comic Fiction' study group						
	evening	Bernician Studies Group (alternate weeks)									
Fri	morning	Michael Greatbatch 'Ouseburn Life & Labour'				Martin Wheeler 'Shakespeare'		Max Adams 'Alfred's World: Viking & Anglo-Saxon Science'			
	afternoon				Lizzie Rowe 'Creating a Portrait' Practical Art						
Saturday		John Sadler WALK 'Defending the Coast: Berwick upon Tweed'		John Sadler WALK 'Druridge Bay'		Patrick Norris WALK 'Ingram'	John Sadler WALK ' Blyth Battery'	John Sadler WALK 'Defending the Coast: Tynemouth'	John Sadler & John Griffiths WALKS	Miguel Angel Gomes 'The Kalevals & Tolkien's <i>The Story of Kullervo</i> '	Bernician Studies Group 'Woods & Fields of Medieval Northumberland'
				Practical Art Silvia Vera Mendoza		Peter Quinn 'Sketchbooks'	NEAES 'Mummy Pits of Ancient Egypt'		Practical Art Margaret Adams		

6

Key

Philosophy

Art

Culture & Society

Narratives

Perspectives



## Monday



### Art History and Design on the theme of 'Consequences'

**Venue:** 11th April ONLY Vane Gallery, 1st floor Commercial Union House  
Green Room, 4th floor, Commercial Union House, Pilgrim Street, Newcastle upon Tyne

**10.45 to 11.45**

Date	Tutor	Title
11 Apr	David Rosier	Chinese Imperial Formal and Semi-formal Costume – A Journey through the Emperor's Wardrobe 1644-1911 <b>Vane gallery</b> (Image shown is from the Wendy and David Rosier Collection of Chinese Imperial Textiles).
18 Apr	Peter Quinn	Van Gogh in London
25 Apr	John Millard	Spectacular Painted Panoramas
02 May	NO SESSION	
09 May	Rachel Barclay	Emperors, Shoguns and Buddhist Monks: Influences on the development of Japanese art through history
16 May	Peter Quinn	Eduardo Palaozzi (1924-2005)
23 May	Maria Goulding	Three Australian Women Artists
30 May	NO SESSION	
06 Jun	Peter Quinn	Cheri Samba and African Painting
13 Jun	Malcolm Gee	Consequences? Goya's Black Paintings



## Monday



### Art History and Design on the theme of 'Consequences'

**Venue:** 11th April ONLY Vane Gallery, 1st floor Commercial Union House  
Green Room, 4th floor, Commercial Union House, Pilgrim Street, Newcastle upon Tyne

**12.30 to 13.30**

Date	Tutor	Title
11 Apr	David Rosier	Informal Costume and Dress Accessories of the Qing Dynasty. 'Still Dressing to Impress' <b>Vane gallery</b> (Image shown is from the Wendy and David Rosier Collection of Chinese Imperial Textiles)
18 Apr	Peter Quinn	Collections—Scotland
25 Apr	John Millard	Paintings and Spectacle in the North East
02 May	NO SESSION	
09 May	Rachel Barclay	Manga! Why have comic books become so important in Japanese Art and Culture?
16 May	Peter Quinn	Collections : Cumbria and the North West
23 May	Margaret Adams	Performance Art : a Centenary Talk
30 May	NO SESSION	
06 Jun	Peter Quinn	Collections : Europe
13 Jun	Alfons Bytautas	The Sleep of Reason : Goya and Printmaking

## Monday

### Art History Course:

### Renaissance Studies

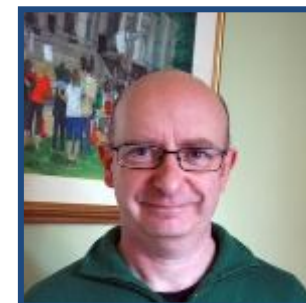
**Tutor:** [Peter Quinn](#)

**Venue:** Green Room, 4th floor, Commercial Union House, Pilgrim Street, Newcastle upon Tyne

**14.00 to 15.30**

**Date Title**

18 Apr	Renaissance Studies: Renaissance—whose and when?
25 Apr	Renaissance Studies: Altarpieces, story-telling and art
09 May	Renaissance Studies: Lives of the Artists
16 May	Renaissance Studies: The City State, Perspective and Place
23 May	Renaissance Studies: Domestic and Secular Art
06 Jun	Renaissance Studies: The Beautiful and the Ugly
13 Jun	Renaissance Studies: <i>The Agony and the Ecstasy</i> , the Renaissance in the popular imagination.



Our approach will be thematic rather than simply following a chronology or a list of 'greats'.

### Recommended Reading:

Baxandall, M., 1988. *Painting and Experience in Fifteenth-Century Italy: A Primer in the Social History of Pictorial Style*, 2 edition. ed. OUP Oxford, Oxford Oxfordshire; New York.

Johnson, G.A., 2005. *Renaissance Art: A Very Short Introduction*, First Edition edition. ed. OUP Oxford, Oxford.

## Monday

**History Course:** *from 9th May to 13th June (not 30th May)*

**The Anglo-Saxon Chronicle : identities and conflicts**

**Tutor:** Malasree Home

**Venue:** White Room, 4th floor, Commercial Union House, Pilgrim Street, Newcastle upon Tyne

**18.30 to 20.00**

This course will look at the development of a tradition of history writing in the vernacular (rather than Latin), and the way in which the many versions of the *Anglo-Saxon Chronicle* communicate a sense of identity through various conflicts and crises. From its inception in the 9th century as part of the Alfredian programme of learning, to its focus on local matters at Canterbury and Peterborough in the eleventh and twelfth centuries, the *Chronicle* texts remain witnesses to major events in the history of the British isle. We will be looking in some detail at how these narratives describe and discuss some key moments of conflict, both external and internal (the coming of the Vikings, the reign of Cnut, the Norman Conquest of 1066, and the anarchy under King Stephen's reign), and how the narratives themselves change over time to adapt to local rather than national perspectives.

***Please note the different starting time.***

## Tuesday

**Classics :** *from 5th April to 7th June*

**Latin at the** [Lit & Phil](#)

**Tutor:** Alan Beale & Adrian Spooner

**Venue:** Lecture room & Loftus room, Lit & Phil—note access involves climbing external steps

**10.30 to 12.00**

Explore members are cordially invited to join our Latin classes for £1 per session (donation towards room hire). We have 2 levels:

**Intermediate** will be using *Reading Virgil* by Peter Jones.

**Advanced** will be starting Virgil's Eclogues—text provided by the tutor.

We hope to introduce sessions for beginners once these two groups are ready to be combined.



**Science Course:** *from 19th April to 17th May*

**Cutting Edge : a Look at Recent Advances in the Sciences**

**Tutor:** [Beatrix Groves](#)

**Venue:** Room 3, 3rd floor, Commercial Union House, Pilgrim Street, Newcastle upon Tyne

**10.30 to 12.00**



From gravity waves to epigenetics, from dark energy to exoplanets... this course will take an enjoyable and provocative tour of recent scientific research. We will examine some of the buzz words that occasionally flit through the news and give participants a better opportunity to understand what they mean, gaining a critical knowledge of both speculative and hard-grounded science on the way.

No need for a science background; all you need is a sense of curiosity.



## Tuesday

### Narratives series on the theme of 'Consequences'

**Venue:** Green Room, 4th floor, Commercial Union House, Pilgrim Street,  
Newcastle upon Tyne

**10.30 to 12.00**

Date	Tutor	Title
12 Apr	Pamela Woof	The Poetry of George Herbert: Something Understood
		There is something easy and everyday about George Herbert's religious feeling. Those who do not share his Reformation Protestant faith respond in just the same way to his struggles to achieve mental and heart-felt peace. His early 17th century Court experience gave him elegance; his learning and competence as a musician meant that his poems had beauty and a formal shape; his passion for goodness brought energy to his compositions. By reading or re-reading and analysing some of his lyrics we shall come close to this most likeable and most English of our early poets. The titles of specific poems will be given nearer the session. Some texts will be provided.
19 Apr	Michael Ayton	Joseph Conrad, 'The Secret Sharer'
		The clash between public responsibility and private volition is a perennial theme of literature. We'll look at how Conrad treats this theme in a brief space.
		Online text: <a href="http://www.classicreader.com/book/2024/1/">http://www.classicreader.com/book/2024/1/</a>
26 Apr	Pamela Woof	'Had we but world enough and time': the poetry of Andrew Marvell
		The pleasures of exaggeration, the wit of impossible seduction, subjects that range from a drop of dew to the Indian Ganges, ideas that blossom out of gardens, 'green thoughts in a green shade : these are some of the joys of reading Marvell. There is a light touch to the language, but behind it often serious contemplation. The Puritan and Parliamentarian, the younger friend of Milton, Marvell offers a sane, balanced and witty view of the political and moral complexities of the mid-17th century. The titles of specific poems will be given nearer the session. Some texts will be provided.



## Tuesday

### Narratives series on the theme of 'Consequences'

**Venue:** Green Room, 4th floor, Commercial Union House, Pilgrim Street,  
Newcastle upon Tyne



#### 10.30 to 12.00

Date	Tutor	Title
03 May	Martin Wheeler	<i>Prima la musica e poi le parole?</i> <b>NB THIS LECTURE HAS BEEN MOVED TO RM 3, 3RD FLOOR</b> How composers have responded to the literary canon. Walter Pater famously observed that 'all art constantly aspires towards the condition of music'. But what kind of relationship can music have with the written word? With this in mind, we shall listen to and discuss the responses of a diverse historical range of composers to a range of literary texts, from Handel's 'improving' take on Milton to Rufus Wainwright's interpretation of a Shakespeare sonnet. No technical knowledge of musical theory is required: this will be an opportunity to hear some extraordinary musical settings of familiar (and perhaps some unfamiliar) texts, to explore just how composers have chosen to articulate what they have found in them and consider how this might reflect or even expand your own experience of these texts. (Continued in the lunchtime session.)
10 May	Bronwen Calvert	The Consequences of Adapting Literary Texts: Page to Screen
17 May	Elayne Chaplin	What did you expect from cinema, when there's an actor in the White House? We will discuss the politics of mainstream Hollywood films during the 1980s and early 1990s - a cinematic period that's been characterised as 'Reaganite Entertainment'. We'll be considering the blockbuster in relation to the film industry and the particular form of escapism and reassurance that such films offer.

## Tuesday

### Narratives series on the theme of 'Consequences'

**Venue:** Green Room, 4th floor, Commercial Union House, Pilgrim Street,  
Newcastle upon Tyne



#### 10.30 to 12.00

Date	Tutor	Title
------	-------	-------

24 May	NO SESSION	
--------	------------	--

This session and the lunchtime session that normally follows it will be held tomorrow (25th May) – read more under the Wednesday programme details.

31 May	Martin Wheeler	Iris Murdoch, <i>A Fairly Honourable Defeat</i>
--------	----------------	---

Through a vivid assortment of characters that certainly fulfil Murdoch's dictum that the author must reflect 'the absurd irreducible uniqueness of people', and an arresting series of events that enact both comedy and tragedy of Shakespearean proportions, we shall explore how the novel interrogates the meaning of love, of good and of evil, the terrifying power of contingency and the gap between the theory and practice of morality. (Continued in the lunchtime session.)

07 Jun	Bronwen Calvert	'Imagining the Victorians in Contemporary Fiction'
--------	-----------------	--

14 Jun	Michael Ayton	Guy de Maupassant, 'Boule de Suif' (Ball of Fat)
--------	---------------	--

Maupassant's famous naturalistic story explores a moral choice, while offering a scathing delineation of French society.  
Online text: <http://americanliterature.com/author/guy-de-maupassant/short-story/boule-de-suif>

## Tuesday

### Narratives series on the theme of 'Consequences'

**Venue:** Green Room, 4th floor, Commercial Union House, Pilgrim Street,  
Newcastle upon Tyne



#### 12.30 to 13.30

Date	Tutor	Title
12 Apr	Pamela Woof	'Lycidas' : what it tells us about Milton
		In 1637 a young Cambridge graduate from Milton's old college was ship-wrecked off Wales, and drowned. Milton's was one of a collection of elegies published in 1638. He wrote of Edward King indirectly, making him a shepherd, Lycidas, and couching the whole poem in the pastoral tradition. Dr Johnson, a hundred years later, thought that there could be no natural human feeling within such an artificial construction. We shall read and examine this celebrated poem, and try to determine what Milton's intentions were and how far he was successful. Please bring a copy if you have one; some texts will be provided.
19 Apr	Michael Ayton	J. W. Goethe, 'He who never ate his bread with tears'
		Just a short lyric – and one of the most powerful, and lacerating, things ever written.
26 Apr	Pamela Woof	<i>Comus</i> a masque: an aristocratic courtly work written by the young Puritan poet John Milton.
		There are wonderful contradictions in this piece; the songs, music, dance, the natural world of streams and plants in a park-like setting, the castle, the noble-born young actors, the compositions of that great Jacobean musician, Henry Lawes; all these elements connect <i>Comus</i> with the extravagant royalist masques of the Court. In such a context the subject is astonishing enough. It is purity, specifically chastity, and how, in Milton's view, goodness and virtue were the essential basis for great writing. Evil, magic, temptation abound in the masque. It is prophetic of <i>Paradise lost</i> perhaps. By selecting passages we will try to follow the structure of <i>Comus</i> . Please bring a copy if you have one; some texts will be provided.



## Tuesday

### Narratives series on the theme of 'Consequences'

**Venue:** Green Room, 4th floor, Commercial Union House, Pilgrim Street,  
Newcastle upon Tyne



#### 12.30 to 13.30

Date	Tutor	Title
03 May	Martin Wheeler	Composers and the Literary Canon (cont'd) <b>NB NOW IN RM 3, 3RD FLOOR</b>
10 May	Rachel Lister	Consequences in <i>Antigone</i> : Sophocles and Heaney  We will look at Sophocles' <i>Antigone</i> and Heaney's translation of it, <i>Burial at Thebes</i> . There is no prior reading required.
17 May	Elayne Chaplin	What did you expect from cinema, when there's an actor in the White House? (contd)  The politics of mainstream Hollywood films during the 1980s and early 1990s - a cinematic period that's been characterised as 'Reaganite Entertainment'. We'll be examining the films of Steven Spielberg, using close textual analysis to uncover some of the recurring mechanisms and deeper meanings that we can find in his work.
24 May	NO SESSION  This session and the earlier morning session that normally precedes it will be held tomorrow (25th May) – read more under the Wednesday programme details.	
31 May	Martin Wheeler	'Words as magic': Iris Murdoch and the artists.  That Iris Murdoch the acclaimed novelist had an abiding suspicion of art testifies to the depth of her commitment to it and of her belief in its power. The functions of art and of ethics are, she argued throughout her life, profoundly linked. In this session we shall focus on some of Murdoch's critical output as moral philosopher and commentator on the practice of writing, most especially as it impacts on her novels and our reading of them. In particular we shall look at her essay, 'Against Dryness', published in Encounter magazine in 1961. It can be found at <a href="https://www.unz.org/Pub/Encounter-1961jan-00016">https://www.unz.org/Pub/Encounter-1961jan-00016</a>

## Tuesday

### Narratives series on the theme of 'Consequences'

**Venue:** Green Room, 4th floor, Commercial Union House, Pilgrim Street,  
Newcastle upon Tyne



### 12.30 to 13.30

Date	Tutor	Title
07 Jun	Rachel Lister	Sarah Orne Jewett's 'A White Heron'
	It would be helpful if students could read the story first - here is a link: <a href="http://www.public.coe.edu/~theller/soj/awh/heron.htm">http://www.public.coe.edu/~theller/soj/awh/heron.htm</a> .	
14 Jun	Michael Ayton	S. T. Coleridge, 'This Lime Tree Bower My Prison'
	What influences help to shape Coleridge's 'conversation poems'? This most moving and humane example will help us to find out. Online text: <a href="http://www.poetryfoundation.org/poem/173248">http://www.poetryfoundation.org/poem/173248</a>	

## Tuesday

**Science Course:** *from 12th April to 10th May*

**Variety is the Spice of Life**

**Tutor:** Michael Leddra

**Venue:** Green Room, 4th floor, Commercial Union House, Pilgrim Street, Newcastle upon Tyne

**14.00 to 15.30**



Over the last 31 years I have been fortunate to be involved in a large variety of geological activities, many of which I have only touched on briefly in my Lifelong Learning sessions. As I retired at Christmas I thought it was a good time to look back and let other people see and hear about some of the things I have been lucky enough to be involved with.

## Tuesday

### Film Course:

### Tears and Lies: the history and politics of the post-war Hollywood melodrama

**Tutor:** Elayne Chaplin

**Venue:** Room 3, 3rd floor, Commercial Union House, Pilgrim Street, Newcastle upon Tyne

**14.00 to 16.00**



### Date Title

19 Apr *Now Voyager* (1942) and *Mildred Pierce* (1945)

Here we'll be exploring the formal elements and the pleasures offered by the women's film during the 1940s, and the way that melodramas reconstructed ideas about femininity and the maternal. We'll be looking at a range of extracts and movie stars of the era,

26 Apr NO CLASS

03 May *Rebecca* (1940), *Notorious* (1946), *Secret Beyond the Door* (1948) and *Dial M for Murder* (1954)

There is a particular subgenre of films, known as the Freudian (or persecuted woman) melodrama. In these films, the home is portrayed as dangerous, and the heroines must face deadly peril. During this session, we'll be exploring the way that these films draw on contemporaneous ideas about psychology and gender roles.

10 May *All that Heaven Allows* (1955), *Written on the Wind* (1956) and *Imitation of Life* (1959)

In this session we'll be looking at the way that the Hollywood melodrama responded to the socio-cultural shifts of the 1950s. In particular, we'll be looking at the way that a radical (German) filmmaker - Douglas Sirk - used melodrama as a vehicle for social critique.



## Tuesday

**Science Course:** *from 17th May to 7th June*

**What Psychologists could Learn from Anthropologists : ethnocentric views of child language acquisition**

**Tutor:** Diana Scott

**Venue:** Green Room, 4th floor, Commercial Union House, Pilgrim Street, Newcastle upon Tyne

**14.00 to 15.30**

Students of infant language are familiar with the term 'Motherese' – the way adults, particularly women, adapt their speech when they talk to babies – and its supposed role in language acquisition by emphasizing pitch and tone and tending to simplify grammar.

A whole theory of language evolution has been based on this idea, arising largely from work by US psychologists who dominated this field for some time. However, Diana Scott has studied examples of child-rearing practices from Kenya, and South America, to the ex-plantations of Louisiana, and discovered how divergent practice can be with regard to infants and their early speech experience. Other linguistics studies of speech production habits in the West, as well as evidence of language acquisition in more diverse situations (e.g. deaf communities, second language, abandoned children) reveals even more complexity.

Diana finds it interesting to see how psychologists, linguists and anthropologists just don't seem to have been talking to each other; this course will explore what they might have learned by doing so.

## Tuesday



**Music Course:** *from 12th April to 17th May*

### The Music of Consequences

**Tutor:** Mike Green

**Venue:** Room 3, 3rd floor, Commercial Union House, Pilgrim Street, Newcastle upon Tyne

**18.00 to 19.30**

**Date Title**

12 Apr	Anton Webern and the unfortunate cigarette
19 Apr	Giovanni Battista Pergolesi and the <i>Querelle des Bouffons</i>
26 Apr	Achille-Claude Debussy : creating an impression
03 May	Enrique Granados : lost at sea
10 May	Jean-Baptiste Lully and the dangers of conducting
17 May	Witold Lutoslawski and <i>Venetian Games</i>

As a reminder that even the greatest musicians cannot always be masters of their own fate, we will be exploring the lives of composers whose works and actions had unexpected consequences. These sessions combine presentation, listening and discussion to discover the life, works and historical context of the relevant figures, and are designed to appeal to anyone with an interest in music. No prior knowledge of the topic is necessary.

## Tuesday

**Science Course:** *from 24th May to 14th June*

**Is Music Just for Us? Searching for the origins of musicality through neural symphony**

**Tutor:** Yukiko Kikuchi

**Venue:** White Room, 4th floor, Commercial Union House, Pilgrim Street, Newcastle upon Tyne

**18.00 to 19.30**



Our brain is profoundly rhythmic without external stimuli. How does the brain differentiate music from random sound sequences? Where did our ability for the appreciation of music come from? In this course, we will discuss the origins of music from an evolutionary perspective based on insights gained from studies on animals, brain networks through neural synchronisations (oscillations), and neurobiological bases of vocalisations, processings and rhythmic behaviours. You will also learn about recent advanced brain measurement techniques, an introduction to signal processing, and applications of music for therapeutic treatments of psychiatric disorders.

## Wednesday

**History Course:** *from 13th April to 4th May*

### **Bred to the Sea Part II**

**Tutor:** Tony Barrow

**Venue:** Green Room, 4th floor, Commercial Union House, Pilgrim Street, Newcastle upon Tyne

**10.30 to 12.00**



Despite their crucial contribution to the expansion of knowledge, economic growth and cultural exchange the lives, skills and working conditions of seafarers in the age of sail remains a mystery to the majority of land-lubbers. As one ancient proverb had it... 'There are three kinds of people; the living, the dead and those that go to sea.' 'Bred to the Sea II' explores some of the myths and realities of seafaring through the ages and offers an ideal preparation for the visit of the [Tall Ships to Blyth](#) in August 2016.

**Literature Course:** *from 20th April to 11th May*

### **Virgil's *Aeneid* and English Poetry**

**Tutor:** Michael Ayton

**Venue:** Room 3, 3rd floor, Commercial Union House, Pilgrim Street, Newcastle upon Tyne

**10.30 to 12.00**



Virgil's great epic describing the Trojan hero Aeneas's passage from Troy to Italy following the Trojan war, his encounter with Queen Dido of Carthage, his visit to the underworld and his struggle to found Rome has proven one of the most influential and culturally significant of all Western poem texts. In looking at the *Aeneid* in a number of English translations, we'll look equally at its role in shaping subsequent epic, in particular through Milton's *Paradise Lost*, and at the powerful (and sometimes highly controversial) fascination it's held for more recent English poets such as T. S. Eliot and Seamus Heaney.



## Wednesday

**Science Course:** *from 18th May to 15th June*

**Modern Techniques in Botanical Science II**

**Tutor:** Gavin Hardy

**Venue:** Green Room, 4th floor, Commercial Union House, Pilgrim Street, Newcastle upon Tyne

**10.30 to 12.00**



Botany is a vibrant, active subject and this course covers a range of modern, state-of-the-art techniques currently advancing such fields as plant taxonomy, plant physiology, the value of plants in discovering new drugs, advances made possible by increased understanding of DNA, GM crops, the use of plants in producing bio-fuels, etc. Each section begins with a brief survey of the techniques used before the latest techniques were adopted.

## Wednesday

### One-off Weekday Theatre Special

British Theatre including a visit to see *Noises Off* at [Northern Stage](#)

**Tutor:** Richard Moore

**Wednesday 25th May**



As a one-off we have been able to arrange a visit to the Northern Stage for a matinee performance of Michael Frayn's *Noises-Off* on 25th May at a discounted rate of £15/pp (Band B seats only). More details will be provided nearer the time so keep a look out for them in our weekly bulletin and newsletter. This show will be preceded by a talk first at CUH followed by a pre-show talk at the theatre. Both talks will be delivered by Richard Moore. So....

10:30 - 12:00    Room 3, 3rd floor    ***Performance and Reality: The Play within the Play.***

12:30 – 13:30    Northern Stage    ***Noises Off***

After this talk those who have purchased tickets for the show will then make their way to the auditorium for the matinee performance of *Noises Off*

After this talk those who have purchased tickets for the show will then make their way to the auditorium for the matinee performance of *Noises Off*.

## Wednesday

### Perspectives series on the theme of 'Consequences'

**Venue:** Green Room, 4th floor, Commercial Union House, Pilgrim Street, Newcastle upon Tyne

#### 12.30 to 13.30

Date	Tutor	Title
13 Apr	Laura Bailey	A new perspective on 'bad grammar'
20 Apr	Matt Leach	How we assess pain in animals and non-verbal humans
27 Apr	Chris Newman	Space law and policy in the 21st century
04 May	Alex Hope	Sustainable business : business as if the world matters...
11 May	Andrew Fletcher	The Milky Way : how our galaxy works
18 May	Karen Johnson and Steven Livingstone	Rocks and dirt : science and art
25 May	Tom Smulders	Evolution and function of food hoarding in titmice
01 Jun	Paul Williams	Built on an ancient sea
08 Jun	Hugh Potter	Managing water pollution from abandoned metal mines in England
15 Jun	Sandra Lane	A growing pleasure: how gardening developed from a preserve of the wealthy into an activity for all

## Wednesday

### Literature Course:

### Short Story Cycles II

**Tutor:** Rachel Lister

**Venue:** Room 3, 3rd floor, Commercial Union House, Pilgrim Street, Newcastle upon Tyne

**14.00 to 15.30**

**Date Title**

20 Apr *In Our Time*, Ernest Hemingway

27 Apr *Too Far to Go*, John Updike

04 May *Too Far to Go*, John Updike (contd)

11 May *The Lone Ranger and Tonto Fistfight in Heaven*, Sherman Alexie

18 May *The Lone Ranger and Tonto Fistfight in Heaven*, Sherman Alexie (contd)

25 May NO CLASS due to *Noises Off*

01 Jun NO CLASS

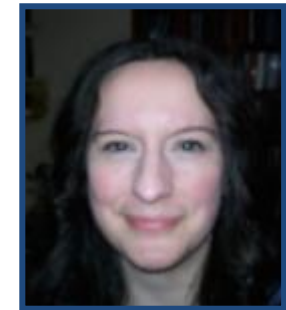
08 Jun *Olive Kitteridge*, Elizabeth Strout

15 Jun *Olive Kitteridge*, Elizabeth Strout (contd)

**This course operates on a booking system—please see details below.**

This is a seminar-style course of seven sessions. This is likely to be a very popular course so you are asked to make a firm commitment to attend. Room capacity makes it necessary to adopt a booking system for places. These will be allocated on a first come first served basis. To book a place on this course, please e-mail [explorelitprog@gmail.com](mailto:explorelitprog@gmail.com) (NOT THE EXPLORE OFFICE, PLEASE) and write 'Rachel Lister Booking' in the header. Please send separate emails if registering for both Bronwen's and Rachel's classes.

Bookings will be taken from Monday 21st March – Thursday 24th March inclusive. Please note that only bookings received by e-mail will be considered. Bookings will be acknowledged and confirmation of being booked on to the course will be sent by e-mail.



## Wednesday

**History Course:** *from 27th April to 8th June*

### **Great UK Cities**

**Tutor :** John Griffiths

**Venue:** White Room, 4th floor, Commercial Union House, Pilgrim Street, Newcastle upon Tyne

**14.00 to 15.30**



In this seven week course we will be examining at the origins, history and development of seven major cities in Great Britain and Northern Ireland: Leeds, Belfast, Birmingham, Glasgow, Liverpool, Cardiff and Nottingham. The fascinating economic, social and political histories of these cities complement their very different layouts and appearances.

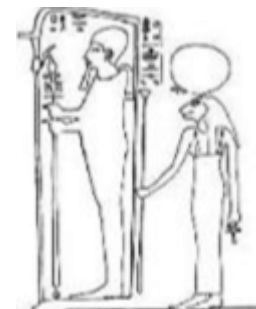
**History Course:** *from 27th April to 25th May then 8th June to 6th July*

### **Egyptian Hieroglyphics**

**North East Ancient Egypt Society** : Ned Ramm & Olive Hogg

**Venue:** Red Room, 4th floor, Commercial Union House, Pilgrim Street, Newcastle upon Tyne

**17.30 to 19.00**



This course by the North Eastern Ancient Egypt Society proved very popular last year, and we are pleased to host it again this summer. Such an ancient system of writing went through many changes over the centuries; this course will focus on hieroglyphics as they were used in The Middle Kingdom. We will learn the alphabet and basic grammar, and translate actual inscriptions. Sharp pencils for drawing the symbols are recommended! If you missed last year don't miss this, or if you would like to refresh what you learned, come along!

Explore members may attend free of charge.

## Thursday

### Culture & Society series on the theme of 'Consequences'

**Venue:** Green Room, 4th floor, Commercial Union House, Pilgrim Street, Newcastle upon Tyne

#### 10.30 to 12.00

Date	Tutor	Title
14 Apr	John Sadler	Fall of the Wall: Berlin Wall and after
21 Apr	Malcolm Grady	The Cuban Missile Crises 1962—the consequences
28 Apr	Ian Ground	How not to read minds
05 May	John Griffiths	The Man who made the Tyne: a life of John Ure
12 May	Gordon Reavley	True or False: the Fallibility of Collective Memory
19 May	Nick Cott	Coalition, 'National Government' and the decline of Liberal party politics, 1931 to 1935
26 May	Scott Ashley	tbc
02 Jun	Colm O'Brien	The Great Bible and Abbot Ceolfrith's Final Journey: 1300 <sup>th</sup> Anniversary
09 Jun	Anthea Lang	Grave consequences : stories behind the stones
16 Jun	Sue Wood	Stannington Sanatorium: How an Act of Charity Changed the Lives of Thousands of Children in the North East of England



## Thursday

### Culture & Society series on the theme of 'Consequences'

**Venue:** Green Room, 4th floor, Commercial Union House, Pilgrim Street, Newcastle upon Tyne

#### 12.30 to 13.30

Date	Tutor	Title
14 Apr	Malcolm Grady	Hiroshima August 1945 – the consequences
21 Apr	Sue Ward	1771 Floods and 1780's Elections : the work of the Transcription Project & the 18th century group
28 Apr	John Sadler	Tommy v Terry: the US/UK intervention in Afghanistan 2001 -2014 and what happens now?
05 May	John Griffiths	The Linear City
12 May	David Mason	Binchester: the Pompeii of Northern England
19 May	Maria Goulding	Women's lives in the sixties and seventies
26 May	Stuart Howard	The Consequences of Dangling From a Pit-rope: The Making of the Mining Society in North East England 1850-1950
02 Jun	Margaret Cook	Begin at the beginning: dilemmas in educating the young child. Notions of consequence and/or benefit to society and the individual.
09 Jun	Sarah Campbell	Who fears to speak of 1916? Memory and Commemoration in Ireland
16 Jun	Alan Beale	The Olympics in Ancient Greece

## Thursday

### Art History Exhibition Tour

#### Introduction to and Tour of the Laing Art Gallery Exhibition

#### [‘Leonardo da Vinci – Ten Drawings from the Royal Collection’](#)

**Tutor:** Catherine Stevenson

**Venue :** White Room, 4th floor, Commercial Union House, Pilgrim Street, Newcastle upon Tyne and then at the Laing Art Gallery

**21st April 10.30 to 12.30**



Expressions of fury in horses, a lion and a man by Leonardo da Vinci

Royal Collection Trust / © Her Majesty Queen Elizabeth II 2016.

As places are limited, members will need to register to attend this introduction and tour.

Registration will be on a fixed date and places will be allocated in order of registration until the maximum number is reached.

## Thursday

### Literature Course:

### Making us Laugh : Reading Comic Fiction

**Tutor:** [Bronwen Calvert](#)

**Venue:** Room 3, 3rd floor, Commercial Union House, Pilgrim Street, Newcastle upon Tyne



**14.00 to 15.30**

**Date Title**

28 Apr	George and Weedon Grossmith, <i>Diary of a Nobody</i>
05 May	Nancy Mitford, <i>Love in a Cold Climate</i>
12 May	Mitford, <i>Love in a Cold Climate</i> conclusion and Evelyn Waugh, <i>Scoop</i>
19 May	NO CLASS
26 May	Waugh, <i>Scoop</i> conclusion
02 Jun	David Lodge, <i>Changing Places</i>
09 Jun	Lodge, <i>Changing Places</i> conclusion
16 Jun	Sue Townsend, <i>The Secret Diary of Adrian Mole Aged 13¾</i>

This is a seminar-style course of 7 sessions. This is likely to be a very popular course so you are asked to make a firm commitment to attend. Room capacity makes it necessary to adopt a booking system for places. These will be allocated on a first come first served basis. To book a place on this course, please e-mail [explorelitprog@gmail.com](mailto:explorelitprog@gmail.com) - (NOT THE EXPLORE OFFICE, PLEASE) and write 'Bronwen Calvert Booking' in the header. Please send separate emails if registering for both Bronwen's and Rachel's classes.

**Bookings will be taken from Monday 21st March – Thursday 24th March inclusive.**

Please note that only bookings received by e-mail will be considered. Bookings will be acknowledged and confirmation of being booked on to the course will be sent by e-mail.

## Thursday

**History Course:** *14th, 28th April, 12th, 26th May and 9th June*

**Bernician Studies Group**

**Tutor:** Colm O'Brien and [Max Adams](#)

**Venue:** Green Room, 4th floor, Commercial Union House, Pilgrim Street,  
Newcastle upon Tyne

**18.30 to 20.30**



This independent Study Group meets fortnightly in Commercial Union House. Current work includes investigating 'Cocwudu' - a possible ancient woodland between Wansbeck and Coquet; further magnetometry surveys in north-east England; and our continuing project researching the Early Mediaeval monastic sites we have identified in Donegal.

Explore members are welcome to join the CUH sessions reporting on and discussing this work and other topics of interest. [For insurance reasons, only members of the BSG itself can participate in fieldwork.]

## Friday

### History Course

### Ouseburn Life and Labour

**Tutor:** Mike Greatbatch



Date	Time	Venue
15 Apr	10.30 to 12.30	Green Room, 4th floor, Commercial Union House, Pilgrim Street, Newcastle upon Tyne
22 Apr	10.30 to 12.30	Archive Room, 6th floor, City Library
29 Apr	10.30 to 13.30	Fieldwork, Ouseburn

The course deals with how to use primary sources and today's historic environment to discover and record life in Newcastle's industrial heartland. Practical exercises in each of these three related sessions will help you to develop research techniques that you can use again and again for a wide variety of themes and locations.

## Friday

### Weekday Literature Specials

#### Shakespeare Unmasked—*Twelfth Night* and *Cymbeline*

**Tutor:** Martin Wheeler

**Venue:** Room 3, 3rd floor, Commercial Union House, Pilgrim Street, Newcastle upon Tyne

**10.30 to 12.30**

**Date      Title**

06 May    'Nature to her bias drew in that': festive play in Shakespeare's *Twelfth Night*.

In this session we shall discuss the hilarity, the sadism and the gender-bending of Shakespeare's *Twelfth Night*, a play that seems simultaneously to affirm and explode all conventions of social, sexual and linguistic propriety. We shall see how the play reflects on such themes as the contest of carnival licence with puritan gravity, mutability and chance, and love and desire, themes that preoccupied Shakespeare throughout his writing career.

13 May    The 'unresisting imbecility' of Shakespeare's *Cymbeline*. Is it a comedy? Is it a tragedy?

Why did Dr Johnson and George Bernard Shaw hate it so much? *Cymbeline* displays an apparent mish-mash of elements and dramaturgical functions and genres, almost delighting in its amorphous eccentricity. Through complex tropes of sexual jealousy, cross-dressing, gender subversion and a fabulous plot to rival any fairy story, including a wicked Queen, mistaken identity and kidnapped children, we shall discover how this unjustly neglected play mythopoeically enacts the Jacobean struggle to define national identity.





## Friday

**History Course** *from 20th May to 17th June*

**Alfred's World: Viking and Anglo-Saxon Science, knowledge and belief**

**Tutor:** [Max Adams](#)

**Venue:** Green Room, 4th floor, Commercial Union House, Pilgrim Street, Newcastle upon Tyne

**11.00 to 13.00**



Anglo-Saxon peasant farmers and Viking raiders: one-dimensional characters in a predictable plot. In this series of explorations, we unravel the minds, skills and thoughts of the people of the Viking Age. Through economics, arts and crafts, women's lives, the Universe and engineering, we reveal their inner lives and discover what made them entrepreneurial, imaginative forces to be reckoned with.

**Practical Art Course** *Fridays 29th April, 6th, 13th, 20th and 27th May*

**Creating a Portrait**

**Tutor:** [Lizzie Rowe](#)

**Venue:** White Room, 4th floor, Commercial Union House, Pilgrim Street, Newcastle upon Tyne

**14.00 to 15.30**



A friendly, informal class suitable for all levels of experience. We will learn how to approach making a portrait from life. Even if you have never drawn or painted before, you can try out some of the basic steps required to capture a likeness. We will be using any medium suitable for drawing and sketching **except oils**.

Please bring your own materials. You may be asked to contribute a small charge to offer the sitter an honorarium

## Friday

### History visit :

Visit to [Dilston Physic Garden](#)

**Tutor:** Marie Addyman

**8th July 14.00 to 15.30**



Marie Addyman has arranged with Professor Elaine Perry for 'Explore' members to have a conducted tour of the Dilston Physic Garden on a day when it is closed to the public. Marie will accompany the group and enrich the visit with her knowledge. Though the date is chosen for maximum enjoyment of the garden, this is a Season 3 session and the only cost to members will be admission to the Garden – currently £3 for a group of ten or more.

Members wishing to take part are asked to give their names to the Explore office so that details of meeting and parking arrangements can be sent out near the time.

Photo by Terence Walsh of TWDA Creative Services

## Saturday

**History Walks :** *various Saturdays—see below*

### Defending the Coast

**Tutor:** John Sadler

**Venue:** various

**11.00 to 13.00**

**Date Title**

16 Apr Berwick upon Tweed

30 Apr Druridge Bay

21 May Blyth Battery

28 May Tynemouth

04 Jun Heugh Battery, Hartlepool



John Sadler, author of *Battle for Northumbria*, will lead a series of two hour battlefield walks for the spring, commencing on 16th April with a perambulation of the walls and defences of Berwick upon Tweed.

John will, for this, the first of four such walks, focus on the history and development of Berwick's walls and barracks from the days of Edward I to the Second World War. This will be lively and interactive with demos of weapons and kit. The meeting point is the main gate to the barracks on Palace Green. The route will cover the whole of the Elizabethan Walls with a series of halts to stand and take in the Henrician fragments, Watergate, site of the castle and riverside. The going is on hard surfaces at all times and fully accessible but walkers should be able to walk for the two hours unaided and come equipped with sensible footwear and water/weatherproof clothing. An optional tour of the KOSB and Soldier's Life exhibitions in the barracks will follow'.

Mobile number for use on the day: 07722 453 875

Numbers limited to 25: please register interest via [weareexplore@gmail.com](mailto:weareexplore@gmail.com) or by calling 0191 261 1633.

Details of other walks will follow as appropriate.

## Saturday

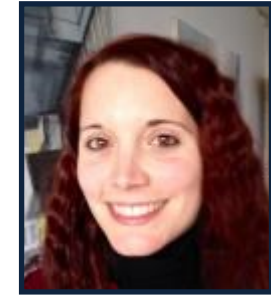
### Practical Art Course :

#### Collage as an Art Form : Drawing with Scissors

**Tutor:** Silvia Vera Mendoza

**Saturday 30th April 10.30 to 13.30**

**Venue:** White Room, 4th floor, Commercial Union House, Pilgrim Street, Newcastle upon Tyne



In this session we will learn about the art of collage and the process of creating original artwork out of the wealth of material that surrounds us in modern culture. We will look at some of the most inspiring collage artists and movements, from cubism to the contemporary, before exploring the process of creating a collage. This is a fun, informal session with a focus on experimentation, with lots of materials, techniques and creative exercises to try. Materials will be provided but if you have anything you would specifically like to use in your work, please bring it along.

As this is likely to be a very popular class and spaces are limited, please book a place on this class by emailing [weareexplore@gmail.com](mailto:weareexplore@gmail.com) or **contacting the Explore Office directly.**

### Art History Course :

#### Sketchbooks

**Tutor:** [Peter Quinn](#)

**Saturday 14th May 10.00 to 13.00**

**Venue:** Green Room, 4th floor, Commercial Union House, Pilgrim Street, Newcastle upon Tyne



From Leonardo to Grayson Perry the sketchbook has been an important private place in which artists explore ideas, plan projects, express private thoughts gather information.

Artists will include Picasso, Emil Nolde, Hokusai, Shinro Ohtake and Anselm Kiefer. We will look at 'keeping a sketchbook',

## Saturday

### Walk

#### A Walk in the Breamish Valley

**Tutor:** [Patrick Norris](#)

**Saturday 14th May 10.45 for 11.00 start**



**Venue:** The meeting place is reached from the A1 via the A697 [Morpeth to Coldstream]. The way to Breamish Valley & Ingram is signposted left off the A697 just to the north of Powburn. We meet in the small car park just over the narrow road bridge, there's a phone box there, which marks it out clearly enough. The postcode for satnav devices is NE66 4LT.

There's a cafe and toilets nearby there too and the walk will start and end from this car park.

Patrick Norris [www.footstepsnorthumberland.co.uk](http://www.footstepsnorthumberland.co.uk) is a professional walking guide and the walks he has previously led for 'Explore' have been very much enjoyed. On this day members can discover some of the prehistoric and more recent features of the valley, including its hill forts and field systems, while enjoying great views and some excellent walking in the National Park. The walk will be about five miles, taken at a pace to suit the group.

**There is a limit of 12 people for this event so please book your place in the Office or email [weareexplore@gmail.com](mailto:weareexplore@gmail.com)**



## Saturday

### North East Ancient Egypt Society

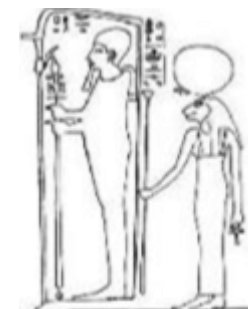
#### **The Mummy Pits of Ancient Egypt**

**Tutor :** Tessa Baber, Cardiff University

**Saturday 21st May 14.00 to 16.00**

**Venue :** Green Room, 4th floor, Commercial Union House, Pilgrim Street, Newcastle upon Tyne

JCLLC enjoys a partnership with NEAES and hosts its meetings in Newcastle, which are open to 'Explore' members. NEAES is dedicated to the study of ancient Egypt in all its aspects. It welcomes people of all ages, interests and experience of Egypt, and offers a full programme of speakers from universities and museums from the UK and abroad. Tessa Baber will be discussing part of her PhD research into the burial practices of the poor in ancient Egypt. In particular, she will focus on how the less well-off members of society achieved a perfect burial.



### **History Walk:**

#### **Peterlee**

**Tutor:** John Griffiths

**Saturday 4th June 14.30**



**Venue:** Meet at Peterlee bus station for a 14.30 start. X9 buses leave Newcastle Eldon Square Bus Station at 12.30 and 13.30, arriving at Peterlee Bus Station at 13.17 and 14.17 respectively.

Parking at Castle Dene shopping centre is free for the first 3 hours.



In season 2 we heard John Griffiths speak of a visionary New Town planned around a village called Eden. The great architect Lubetkin was to design a place 'neither a suburb nor a garden city'; and later the vision grew of a 'Science City' for the North of England. This walk will show us how 'This Other Eden' became the town it is today.

This is an urban walk , mostly level, but suitable footwear is advised



## Saturday

### Practical Art Course:

**On your Marks.....Explore! A printmaking workshop for everyone**

**Tutor:** Margaret Adams

**Saturday 4th June 10.30 to 13.30**

**Venue:** White Room, 4th floor, Commercial Union House, Pilgrim Street, Newcastle upon Tyne



Margaret Adams is continuing to explore different print making techniques and the making of art books to display our prints. The workshop is for every level of ability and experience – for anyone who wishes to develop a more confident approach to this aspect of art. A wide range of materials will be provided with a small charge to cover the costs.

Please bring your own ideas to work from such as drawings or images: and wear old clothes.

Places will be limited and therefore booking is necessary. Please email [weareexplore@gmail.com](mailto:weareexplore@gmail.com) or contact the Explore Office direct.

### History Course:

**The Kalevals and Tolkien's *The Story of Kullervo***

**Tutor:** Miguel Angel Gomes

**Saturday 11th June 10.00 to 12.30**

**Venue:** Green Room, 4th floor, Commercial Union House, Pilgrim Street, Newcastle upon Tyne



J. R. R. Tolkien once wrote that the story of hapless Kullervo was the germ of his attempt to write legends of his own. This previously unknown work of fantasy, first published in 2015, invites the reader to revisit Tolkien's source-work and the national epic of Finland: *The Kalevala*. Join us for a journey to the heart of Tolkien's invented world.

## Saturday

### Bernician Studies Group

#### **Searches for Woods and Fields of Medieval Northumberland**

**Tutor:** Colm O'Brien and [Max Adams](#)

**Saturday 18th June 10.00 to 13.00**

**Venue:** Green Room, 4th floor, Commercial Union House, Pilgrim Street, Newcastle upon Tyne

Are there any relics of ancient woodland in Northumberland?

How would we know where to look?

How would we recognise them if we saw them?

How can maps and estate records help us?

What can we find out from monastery charters?

Bernician Studies Group members will present some case studies from current researches in mid-Northumberland and offer some D-I-Y guidance.

**Member led Season Four 2015-16 will take place over the summer.**

**Season One 2016-17 starts Monday 3rd October.**