

# EXPLORE



## Season 2 2015-16 programme

# Explore Season 2 Programme 2015-16

The Season 2 programme follows on the theme of ‘What a piece of work is a Man...’ celebrating the 400th anniversary of the death of Shakespeare.

**If you're new to Explore why not come and try the programme?**

**There are two options:**

**Attend any or all sessions in FREE Week One starting Monday 11th January**

**— click [HERE](#) to see the Week One programme.**

You need to join Explore in order to attend the sessions. Details of how to join Explore are available on our website: [www.weareexplore.org.uk](http://www.weareexplore.org.uk) Most of our sessions require no advance booking—just turn up. However, for study groups, practical art and some walks, we do need to manage attendances. These sessions (only) have specific booking instructions in this programme.

If you are disabled and would require a helper in order to take part in Explore, the helper can attend without charge.

If you would require financial assistance in order to take part in the Explore programme, you are encouraged to apply to the [S.Y. Killingley Memorial Trust](#).

## Explore Season 2 Programme 2015-16

Congratulations to the programming team -

Art History and Design: Jack Massey and Helen Watson

Narratives (Literature, cinema and Music) : Rita Prabhu and Angela Young

Perspectives (Science and Mathematics): Christine BurrIDGE, Maria Goulding, Mike Leddra and Joy Rutter

Culture & Society (History and Archaeology): Joy Rutter and Kath Smith

Philosophy: Joy Rutter

with direction from Bronwen Calvert & Colm O'Brien.

We are also grateful to [Ampersand Inventions](#) for our accommodation at Commercial Union House.

*'It is not knowledge, but the act of learning, not the possession but the act of getting there, which grants the greatest enjoyment.'*

Carl Friedrich Gauss (1777-1855)

## Explore Season 2 2015-16 Overview

Week of		11th Jan	18th Jan	25th Jan	1st Feb	8th Feb	15th Feb	22nd Feb	29th Feb	7th Mar	14th Mar
Mon	morning	Ian Ground 'Wittgenstein One'					Malcolm Grady 'The European Union'				
	morning	Morning art series on the theme of 'What a piece of work is a Man...'									
	lunch	Lunchtime art series on the theme of 'What a piece of work is a Man...'									
	afternoon		Peter Quinn 'Art in the North East: the Twentieth Century'								
	evening					John Sadler '1916 - Year of decision, a century on'					
Tues	morning	Latin at the Lit & Phil									
	morning	Morning literature series on the theme of 'What a piece of work is a Man...'									
	morning						Beatrix Groves 'Introduction to Sociology'				
	lunch	Lunchtime literature series on the theme of 'What a piece of work is a Man...'									
	afternoon	Tony Barrow 'Bred to the Sea'					Michael Leddra 'Mountains'				
	afternoon		Elayne Chaplin 'Animated Cinema'							Martin Wheeler 'On Macbeth'	
	evening	Mike Green 'Exploring Musical Settings of (or inspired by) Shakespeare's Words'									
Wed	morning	Gavin Hardy 'Modern Techniques in Botanical Science'					Fred Stevenson ' Rainbows, Halos and Glories'				
	morning		Michael Ayton 'Homer's Iliad & the Myth of Helen of Troy'					Michael Ayton			
	lunch	Perspectives series on the theme of 'What a piece of work is a Man...'									
	afternoon		Rachel Lister 'Friendships in Literature'								
	afternoon	Alan Beale 'Changing Metamorphoses, Ovid and his influence'					Janet Atkinson 'Environmental Science'				
Thurs	morning	Culture & Society series on the theme of 'What a piece of work is a Man...'									
	lunch	Culture & Society series on the theme of 'What a piece of work is a Man...'									
	afternoon				Bronwen Calvert 'Mystery and Terror : Creating Suspense in Fiction' study group						
	afternoon	Maria Goulding & Peter Pool 'Mathematical Thinking through Problem Solving'					John Griffiths 'A History of British Town Planning'				
	evening	Miguel Angel Gomes 'Early chivalry and Anglo-Norman literature' / Bernician Studies Group (alternate weeks)									
Fri	morning		Pamela Woof	Max Adams 'Viking-Age Britain in Five Objects'							Michael Bavidge
	afternoon				Lizzie Rowe 'Creating a Portrait' Practical Art						
Saturday		Beatrix Groves 'Who Wants to Live Forever? - The Search for Immortality'	Miguel Angel Gomes 'Icelandic Sagas'	Silvia Mendoza Vera 'Drawing Landscapes : Newcastle upon Tyne'	NEAES 'He Found It Like Heaven Within'	John Griffiths 'The Chinese Cultural Revolution'		Peter Quinn 'Reading the Sixties: Making Sense of Pop Art'	Margaret Adams 'On your Marks - Explore Printmaking'	SCIENCE DAY	Gavin Hardy 'The Flowers that Bloom in the Spring'

Key

Philosophy

Culture &amp; Society

Art

Narratives

Perspectives

## Monday

**Philosophy Course:** *from 11th January to 8th February*

### Wittgenstein One

**Tutor:** [Ian Ground](#)

**Venue:** White Room, 4th floor, Commercial Union House, Pilgrim Street, Newcastle upon Tyne

**10.30 to 12.00**

This course will offer an introduction to the life and some of the themes in the work of the twentieth century's most enigmatic and charismatic philosopher: Ludwig Wittgenstein.

The tutor is the secretary of the British Wittgenstein Society and has recently published a two volume set of first hand memoirs of Wittgenstein by those who knew him: [Portraits of Wittgenstein](#).

**History Course:** *from 15th February to 14th March*

### The European Union: a Historical Perspective

**Tutor:** Malcolm Grady

**Venue:** White Room, Commercial Union House, Pilgrim Street, Newcastle upon Tyne

**10.30 to 12.00**

Europe is our future, isn't it ... or is it not? This course will look at the historical evolution of the concept of Europe from Roman times until the present century to try and define 'What is Europe?' and what does it mean to us. Book now...learn ... vote wiser!



## Monday

**Art History and Design on the theme of ‘What a piece of work is a Man...’**

**Venue:** Green Room, 4th floor, Commercial Union House, Pilgrim Street, Newcastle upon Tyne



**10.45 to 11.45**

<b>Date</b>	<b>Tutor</b>	<b>Title</b>
11 Jan	Maria Goulding	Australian Art I: The Art of Indigenous People
18 Jan	Marie Therese Maine	Shakespeare and the Pre-Raphaelites
25 Jan	Peter Quinn	Diego Riviera (1886-1957) Mexican Muralist
01 Feb	Hazel Barron Cooper	Representations of the Human Form : 1360 the Present Day
08 Feb	Hugh Dixon	Meadows with Delight : up the Garden Path, exploring Northumbrian Garden History
15 Feb	Peter Quinn	Henri Cartier-Bresson (1908-2004)
22 Feb	Michael Johnson	Cragside : Inside an Arts and Crafts House
29 Feb	Gordon Reavley	Impressionist Paris after the 1871 Commune
07 Mar	Malcolm Gee	Delacroix's Hamlet
14 Mar	Peter Quinn	George Cruickshank (1792—1878)

## Monday

**Art History and Design on the theme of ‘What a piece of work is a Man...’**

**Venue:** Green Room, 4th floor, Commercial Union House, Pilgrim Street, Newcastle upon Tyne



**12.30 to 13.30**

<b>Date</b>	<b>Tutor</b>	<b>Title</b>
11 Jan	Maria Goulding	Australian Art II: The Art of the Settlers
18 Jan	Marie Therese Maine	Counting Down to Open Treasure
25 Jan	Peter Quinn	Jose Guadalupe Posada (1852-1913) : Engraver and his Satirist
01 Feb	Peter Quinn	Ai Weiwei: the Chinese Artist
08 Feb	Hugh Dixon	The Fabric of his Folly : a Winter's Tale of Garden Buildings
15 Feb	Peter Quinn	Ed Ruscha, Every Building on Sunset Strip
22 Feb	Michael Johnson	Italian Futurism
29 Feb	Gordon Reavley	Un-American Activities : the Idealisation of America in the Art of the 1930s and '40s
07 Mar	Malcolm Gee	Rouault—'Man a wolf to man'
14 Mar	Peter Quinn	Gustave Dore (1832-1883)

## Monday

### Art History Course:

### Local Art and Culture—Art in the North East, the 20th Century

**Tutor:** [Peter Quinn](#)

**Venue:** Green Room, 4th floor, Commercial Union House, Pilgrim Street, Newcastle upon Tyne



**14.00 to 15.30**

**Date Title**

18 Jan	Blast : Art and Empire
25 Jan	Picturing the North : Documentary Photography and Film
01 Feb	Pitmen Modern
8 Feb	NO CLASS
15 Feb	War and Art in the North East
22 Feb	Man, Machine and Motion : Modernity and Pop Culture
29 Feb	Public Art in the North East
07 Mar	Baltic Effect



## Monday

**History Course:** *from 1st to 29th February*

**1916—Year of Decision, a Century On**

**Tutor:** John Sadler

**Venue:** Green Room, 4th floor, Commercial Union House, Pilgrim Street, Newcastle upon Tyne

**19.00 to 20.30**



This year marks the centenary of what was perhaps the pivotal year of the Great War – when the scale of the conflict escalated to undreamt of heights and the clash became truly global. British and imperial forces were fighting in France, Belgium, Italy, the Balkans, Palestine and Mesopotamia. There were no breakthroughs, only more horror and unimaginable loss, two of the bloodiest battles in history Verdun and the Somme both ended in exhausted, costly stalemate. At sea the anticipated defining battle at Jutland failed to prove climatic. Intervention on the Tigris ended in loss and humiliation at Kut. The battle of the Atlantic deepened, Zeppelins bombed over England, the war in the air came of age and for the first time, the tank was seen on the battlefield.

## Tuesday

**Classics** from 12th January for intermediate and advanced groups.

### Latin at the Lit & Phil

**Tutor:** Alan Beale & Adrian Spooner

**Venue:** Lecture room & Loftus room, Lit & Phil—note access involves climbing external steps

**10.30 to 12.00**

Explore members are cordially invited to join our Latin classes for £1 per session (donation towards room hire). We have 2 levels:

**Intermediate** using the *Cambridge Latin Anthology*

**Advanced** using *Tacitus Annals Book IV*.

We hope to introduce sessions for beginners once these two groups are ready to be combined.

The photos are from the class field trip to the 'Roman Empire: Power and People' exhibition at Segedunum.



## Tuesday

### Narratives on the theme of 'What a piece of work is a Man...'

**Venue:** Green Room, 4th floor, Commercial Union House, Pilgrim Street,  
Newcastle upon Tyne



#### 10.30 to 12.00

Date	Tutor	Title
12 Jan	Martin Wheeler	Sex, politics and the 'Killer Queen': Shakespeare's <i>Antony and Cleopatra</i>
		The focus of this session will be Shakespeare's magnificent play <i>Antony and Cleopatra</i> . We shall examine in detail the play's language, its characterisation, its imagery and themes, its use and abuse of its sources and the big problem of that relationship: is it the sordid and faintly embarrassing final fling of a couple of waning has-beens, or the 'new heaven, new earth' that they claim? Is he a great Roman hero, a 'man of steel', destroyed by 'a gypsy's lust'? Or is there something to be salvaged from the chaos of their tragic end?
19 Jan	Pamela Woof	Blake - <i>The Songs of Innocence and of Experience</i>
		Blake was original. "I know myself", he said, "both Poet and Painter". In his own day he was thought by some to be mad; in ours he is seen as the purest genius of the Romantics. His purpose was to "See Visions, Dream Dreams and prophecy and speak Parables". We shall consider some of his lyric parables: 'The Lamb', 'The Tiger', 'Holy Thursday', 'The Blossom', 'The Sunflower', 'The Sick Rose', 'The Chimney Sweeper', 'London' and other poems that have their counterparts in both <i>Innocence</i> and <i>Experience</i> . Reading Blake gives us a shot of energy, and "Energy", he wrote, "is eternal delight".
26 Jan	Marie Addyman	Form and Function in Traditional Tales

## Tuesday

### Narratives on the theme of 'What a piece of work is a Man...'

**Venue:** Green Room, 4th floor, Commercial Union House, Pilgrim Street,  
Newcastle upon Tyne



#### 10.30 to 12.00

Date	Tutor	Title
02 Feb	Martin Wheeler	<i>Prima la musica e poi le parole?</i> How composers have responded to the literary canon. Walter Pater famously observed that 'all art constantly aspires towards the condition of music'. But what kind of relationship can music have with the written word? With this in mind, we shall listen to and discuss the responses of a diverse historical range of composers to a range of literary texts, from Handel's 'improving' take on Milton to Rufus Wainwright's interpretation of a Shakespeare sonnet. No technical knowledge of musical theory is required.
09 Feb	Bronwen Calvert	Genetic engineering, cloning & the post-human in contemporary fictions
16 Feb	Marie Addyman	Inhabiting Space and Place <b>NOTE 10.30 to 13.30</b> We are witnessing a global interest in the concept of place which encompasses the points of view of geographers, philosophers, novelists and poets, and what in the past would have been called travel writers. There is a debate about the differences between place and space and the different ways either term can be broken down - concepts which this shortened version of the course originally scheduled for Season 1 will aim to address. Familiarity with the theories put forward in G. Bachelard's <i>The Poetics of Space</i> .
23 Feb	Elayne Chaplin	What a piece of work is a gangster? Loyalty, leadership and revenge in the American gangster genre.

## Tuesday

### Narratives on the theme of 'What a piece of work is a Man...'

**Venue:** Green Room, 4th floor, Commercial Union House, Pilgrim Street,  
Newcastle upon Tyne



#### 10.30 to 12.00

Date	Tutor	Title
01 Mar	Chris Heckles	Newcastle People's Theatre: A Director's Perspective
08 Mar	Michael Ayton	Alexander Pope's <i>An Essay on Man</i> . text at <a href="http://www.gutenberg.org/ebooks/2428">http://www.gutenberg.org/ebooks/2428</a>
15 Mar	Richard Moore	Shakespeare and Humanity - "Are you a man?"

This question posed by Lady Macbeth, with more than a hint of emotional blackmail, feeds into the wider question of what constitutes our humanity and indeed our particular gender roles. In this session we shall look at Shakespeare's penetrating investigation into humanity and the human condition, looking particularly at *Hamlet*, *All's Well That Ends Well*, *Richard II* and *Troilus and Cressida*. Plot summaries will be given so knowledge of all the plays is not a requirement, though it would obviously be a bonus.

## Tuesday

**Science Course:** *from 16th February to 15th March*

### **Introduction to Sociology**

**Tutor:** Beatrix Groves

**Venue:** Room 3, 3rd floor, Commercial Union House, Pilgrim Street, Newcastle upon Tyne



Sociology is the study of the structure and development of human societies. But in less formal language: what makes our societies like they are, and why do we behave as we do? This course will give you a chance to gain an insight into the primary theories of sociology, and especially the major contributors to the discipline. These include: Ibn Khaldun, Emile Durkheim, August Comte, Karl Marx and Anthony Giddens.

## Tuesday

### Narratives on the theme of 'What a piece of work is a Man...'

**Venue:** Green Room, 4th floor, Commercial Union House, Pilgrim Street,  
Newcastle upon Tyne



#### 12.30 to 13.30

Date	Tutor	Title
12 Jan	Martin Wheeler	Shakespeare's <i>Antony and Cleopatra</i> continued—see morning session
19 Jan	Pamela Woof	The Appeal of Robert Burns

Burns was a true poet, and though we are not perhaps native Scots and have not laboured on Ayrshire earth, we dare still enjoy Burns's rhythms of talk and of the tellers of tales among his country neighbours. The songs and satires, verse-letters and fables expose his community's little meannesses and pretensions with comic tolerance and good nature. Burns is shrewd and witty as well as humorous. He draws us in, through his dramatic apprehension of the world and the charm of his musical language; we are there, watching the progress of that louse making its way over a fastidious lady's bonnet in church. The poems are permanently companionable.

26 Jan	Marie Addyman	What is it about vampires? Looking particularly at Sheridan le Fanu's <i>Carmilla</i> .
02 Feb	Martin Wheeler	Composers and the Literary Canon continued—see morning session
09 Feb	Bronwen Calvert	Ursula Le Guin, 'Nine Lives' (1969)

available in print in the collection *The Wind's Twelve Quarters*

and online here :-[http://www.baenebooks.com/chapters/9781625791405/9781625791405\\_2.htm](http://www.baenebooks.com/chapters/9781625791405/9781625791405_2.htm)

\* Please read the story before the session where we will discuss it in detail

## Tuesday

### Narratives on the theme of 'What a piece of work is a Man...'

**Venue:** Green Room, 4th floor, Commercial Union House, Pilgrim Street,  
Newcastle upon Tyne



#### 12.30 to 13.30

Date	Tutor	Title
16 Feb	Marie Addyman	'Inhabiting Space and Place' continued— <b>NOTE 10.30 to 13.30</b>
23 Feb	Elayne Chaplin	What a piece of work is a gangster? Continued Mario Puzo's <i>The Godfather</i> - from page to screen
01 Mar	Chris Heckles	The People's and the RSC: The Dream 16 Project
08 Mar	Michael Ayton	Ah Humanity! The Meaning of Herman Melville's <i>Bartleby, the Scrivener</i> text at <a href="http://www.gutenberg.org/ebooks/11231">http://www.gutenberg.org/ebooks/11231</a>
15 Mar	Richard Moore	Yellow Tapers for a Dream This session will examine two Victorian cultural movements - the Pre-Raphaelite and the Aesthetic - in order to look at gender roles and new cross-gender possibilities in late Victorian literature, music and art. No prior knowledge is required but an interest in cultural and social history would be a bonus. Works glanced at will include <i>The Blessed Damsel</i> (Rossetti), <i>The Golden Stairs</i> (Burne-Jones) and <i>Patience</i> (Gilbert and Sullivan), while among the fascinating and often bizarre lives featured will be those of Jane Morris, Walter Pater and (inevitably) Oscar Wilde.



## Tuesday

**History Course:** *from 12th January to 9th February*

**Bred to the Sea**

**Tutor:** Tony Barrow

**Venue:** Green Room, 4th floor, Commercial Union House, Pilgrim Street, Newcastle upon Tyne



**14.00 to 15.30**

Despite their crucial contribution to the expansion of knowledge, economic growth and cultural exchange the lives, skills and working conditions of seafarers in the age of sail remains a mystery to the majority of land-lubbers. As one ancient proverb had it... 'There are three kinds of people; the living, the dead and those that go to sea.' 'Born to the Sea' explores some of the myths and realities of seafaring through the ages and offers an ideal preparation for the visit of the Tall Ships to Blyth in August 2016.

**Science Course:** *from 16th February to 15th March*

**Mountains**

**Tutor:** Michael Leddra

**Venue:** White Room, 4th floor, Commercial Union House, Pilgrim Street, Newcastle upon Tyne

**14.00 to 15.30**



Mountains form some of the most important and spectacular features on the earth. This season we will continue to look at the geology and formation of the mountains along the western side of North America.

## Tuesday

### Film Course:

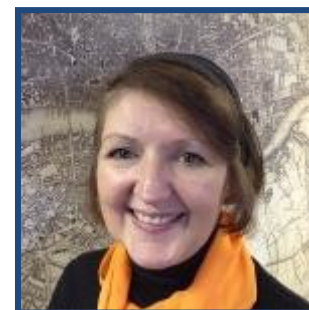
#### Animated Cinema—the Creation of Heroes and Monsters

**Tutor:** Elayne Chaplin

**Venue:** Room 3, 3rd floor, Commercial Union House, Pilgrim Street, Newcastle upon Tyne

**14.00 to 16.00**

Date	Title
19 Jan	Early animation : aesthetics and historical context
26 Jan	Classical Hollywood animation : the Disney effect
02 Feb	Modern animation : Miyazaki



### Literature Course: *from 1st to 8th March*

#### The Aural and the Visual: Roman Polanski's *Macbeth* and the challenges of filming Shakespeare

**Tutor:** Martin Wheeler

**Venue:** Room 3, 3rd floor, Commercial Union House, Pilgrim Street, Newcastle upon Tyne

**14.00 to 16.00**

The aural and the visual : Roman Polanski's *Macbeth* and the challenges of filming Shakespeare. Can a cinematic film ever hope to articulate the rich play of meanings in a Shakespeare text? The Russian film maker Grigori Kozintsev believed that, in committing Shakespeare to film, 'the aural has to be made visual. The poetic texture has itself to be transformed into a visual poetry, into the dynamic organisation of film imagery.' In these sessions we shall examine in detail Shakespeare's extraordinary play *Macbeth* and Roman Polanski's infamous 1971 film of the text, reflecting on issues of interpretation and the relationship between the arguably antithetical media of text and film.



## Tuesday

### Music Course:

### Exploring Musical Settings of (or inspired by) Shakespeare's Words

**Tutor:** Mike Green

**Venue:** Room 3, 3rd floor, Commercial Union House, Pilgrim Street, Newcastle upon Tyne

**18.00 to 19.30**



Date	Title
12 Jan	Romeo and Juliet in the hands of the Russians
19 Jan	Romeo and Juliet visit New York
26 Jan	Lady Macbeth of the Mtensk District
02 Feb	A Midsummer Night's Dream
09 Feb	Othello in Italy
16 Feb	Sir John in Love

In line with the Explore topic of 'What a piece of work is a Man...' and the celebration of the work of William Shakespeare, we will be exploring musical settings of (or inspired by) Shakespeare's words. We will be looking at the historical and musical context of the chosen pieces and comparing different approaches to settings of the same text. There will be plenty of opportunity for discussion and listening to musical examples.

No formal musical knowledge is required.

## Wednesday

**Science Course:** *from 13th January to 10th February*

### **Modern Techniques in Botanical Science**

**Tutor:** Gavin Hardy

**Venue:** Green Room, 4th floor, Commercial Union House, Pilgrim Street, Newcastle upon Tyne



**10.30 to 12.00**

Botany is a vibrant, active subject and this course is going to cover a range of modern, state-of-the-art techniques currently advancing such fields as plant taxonomy (lots of advances due to genetics, molecular biology, studies in DNA, etc), plant physiology, the value of plants in discovering new drugs, GM crops, the use of plants in producing bio-fuels and more. Each section will start with a brief run down of the techniques used before the latest techniques were adopted (showing how we stand on the shoulders of giants by depicting how we are dependent on all the science that has gone before). More techniques to follow!

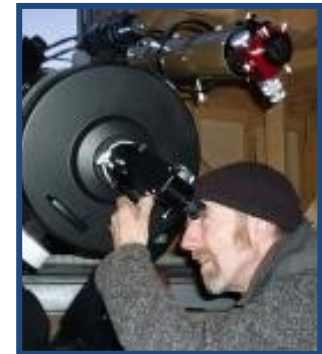
**Science Course:** *from 17th February to 16th March*

### **Rainbows, Haloes and Glories**

**Tutor:** Fred Stevenson

**Venue:** Newcastle Arts Centre, Media Room

**10.30 to 12.00**



Everyone is familiar with the beauty of the rainbow but how many people understand exactly how they are formed? In this course the formation of rainbows will be explained in detail. We will also discuss the host of other optical marvels that can be seen in the sky including halos, coronas, sun pillars, sun-dogs and glories.

In discussing these optical phenomena an insight will be gained into the physics of light - reflection, refraction, interference and diffraction. Hopefully it will be appreciated that the scientific explanations of such phenomena do not detract but only add to their beauty.

## Wednesday



**Literature Course:** *from 20th January to 10th February*

**Homer's Iliad and the Myth of Helen of Troy**

**Tutor:** Michael Ayton

**Venue:** Room 3, 3rd floor, Commercial Union House, Pilgrim Street, Newcastle upon Tyne

**10.30 to 12.00**

Homer's great epic account of the Greeks' assault on Troy following the abduction of Helen has fired the imagination of writers and artists down the centuries. Looking at the original ancient Greek poem in English translation, we'll consider this legacy, examining in particular the controversial and fascinating figure of Helen as presented by writers as diverse as W. B. Yeats, H. D., and Derek Walcott.

**Literature One-off class** *24th February*

**The Epic of Gilgamesh, Literature's First Masterpiece?**

**Tutor:** Michael Ayton

**Venue:** Room 3, 3rd floor, Commercial Union House, Pilgrim Street, Newcastle upon Tyne

**10.30 to 13.30**

The fascinating ancient Mesopotamian epic relating the life and deeds of the god-king Gilgamesh is thought to have influenced both the Bible and Homer. We'll look at the original poem in English translation, considering in particular the strong impact it has had on writers and other artists over the last hundred years or so.

## Wednesday

**Perspectives series on the theme of ‘What a piece of work is Man...’**

**Venue:** Green Room, 4th floor, Commercial Union House, Pilgrim Street, Newcastle upon Tyne

### 12.30 to 13.30

Date	Tutor	Title
13 Jan	Pete Edwards	'The return of the LHC: it's time to break physics'. The Large Hadron Collider (CERN)
20 Jan	Anna Bortolan	The Relationship Between Affectivity and Autobiographical Narratives: A Philosophical Perspective
27 Jan	Yukiko Kikuchi	Rhythms of the brain: keys to train your brain through sounds
03 Feb	Chris Morris	Visual Hallucinations in Dementia with Lewy Bodies
10 Feb	Tom Smudders	How Unique are Humans in their Psychological Experience
17 Feb	John Mathers	Nutrition and our Genes
24 Feb	Tom Snell	Hydraulic Fracking and Induced Seismicity
02 Mar	Karl Egeland-Erikson	Northumbrian Geologists of the 19th Century
09 Feb	Robert Dominy	The Wright Brothers and their Contribution to Aeronautics
16 Feb	Fred Stevenson	By being seldom seen, I could not stir, <b>But like a comet I was wonder'd at.</b> <i>King Henry IV Part 1</i> , Act 3 Scene 2, lines 46-47.

## Wednesday

**History Course:** *from 13th January to 10th February*

**Changing *Metamorphoses*: Ovid and his Influence**

**Tutor:** Alan Beale

**Venue:** White Room, 4th floor, Commercial Union House, Pilgrim Street, Newcastle upon Tyne

**14.00 to 15.30**

Ovid's *Metamorphoses* is a vastly influential work. We will explore some of the stories it tells along with later versions and variations in literature and the visual arts, with a particular focus on Titian.

Click [HERE](#) for a link to a reading list for this course.



**Science Course:** *from 17th February to 16th March*

**Environmental Science**

**Tutor:** Janet Atkinson

**Venue:** White Room, 4th floor, Commercial Union House, Pilgrim Street, Newcastle upon Tyne

**14.00 to 15.30**

This is a subject which has come much to the forefront during our lifetimes and in our lives. Janet Atkinson will look at a number of questions of current concern, across energy sources, industrial legacy, waste management and eco-housing. All are relevant to the discussion about responsible use of resources.

## Wednesday

### Literature Course:

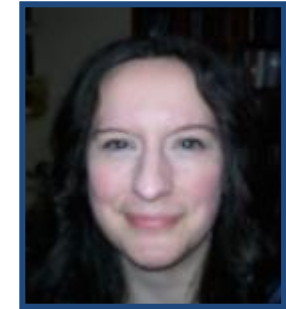
### Friendships in Literature

**Tutor:** Rachel Lister

**Venue:** Room 3, 3rd floor, Commercial Union House, Pilgrim Street, Newcastle upon Tyne

**14.00 to 15.30**

Date	Title
20 Jan	Toni Morrison <i>Sula</i>
27 Jan	Margaret Atwood <i>Cat's Eye</i>
03 Feb	Margaret Atwood <i>Cat's Eye</i> continued
10 Feb	John Irving <i>A Prayer for Owen Meany</i>
17 Feb	NO CLASS
24 Feb	John Irving <i>A Prayer for Owen Meany</i> continued
02 Mar	Graham Swift <i>Last Orders</i>
09 Mar	Graham Swift <i>Last Orders</i> continued



How do we define and sustain friendships? This module will explore how four twentieth-century writers have used the novel form in different ways to consider what it means to be a friend in a range of contexts.



## Thursday

**Culture & Society series on the theme of ‘What a piece of work is a Man...’**

**Venue:** Green Room, 4th floor, Commercial Union House, Pilgrim Street, Newcastle upon Tyne

### 10.30 to 12.00

Date	Tutor	Title
14 Jan	John Griffiths	The Other Eden, Demi-paradise: a History of Peterlee
21 Jan	Anthea Lang	Love and Lust: Encounters at Gibside
28 Jan	Linda Bankier	The Flodden Transcription Project
04 Feb	John Sadler	Macbeth: Man, Myth and Shakespeare
11 Feb	Diana Whaley	Man in the Landscape: Northumberland Place-names
18 Feb	Malcolm Grady	Women’s Views of Men in the 19th Century
25 Feb	Ian Ground	How Not to Read Minds
03 Mar	Gordon Reavley	The End of the First World War: a Corrective
10 Mar	Sanita Nezirovic	Bioanthropological Profiling and DNA Analysis of the Missing: an Osteological Journey
17 Mar	Adam Morton	A Lump of Perdition: Protestants, Humanity and Predestination

## Thursday

**Culture & Society series on the theme of ‘What a piece of work is a Man...’**

**Venue:** Green Room, 4th floor, Commercial Union House, Pilgrim Street, Newcastle upon Tyne

### 12.30 to 13.30

Date	Tutor	Title
14 Jan	Margaret Cook	Talking’s Just the Last Word: What Research Can Tell us About the Young Child’s Desire to Communicate
21 Jan	Malcolm Grady	What a piece of work a man is—a Suffragette perspective
28 Jan	Liz O’Donnell	In Sharp Relief: a Remarkable 18th Century North East Family
04 Feb	David & Kathleen Connolly	A Brief History of the Co-operative Society
11 Feb	Kathleen Connolly & Maria Goulding	An Oral History of the Co-operative Wholesale Society in the North East
18 Feb	Beatrix Groves	The Science of Shakespeare’s World
25 Feb	Gary Bankhead	Case Studies: Medieval Artefacts from the River Wear
03 Mar	John Griffiths	The ARP Scandal of 1944
10 Mar	Sanita Nezirovic	Forensic Case: Identity of the Missing (includes the examination of an adult skeleton)
17 Mar	Maria Goulding	Simone de Beauvoir and Feminism in the 20th Century

## Thursday

### Literature Course:

### Mystery and Terror : Creating Suspense in Fiction

**Tutor:** [Bronwen Calvert](#)

**Venue:** Room 3, 3rd floor, Commercial Union House, Pilgrim Street, Newcastle upon Tyne

**14.00 to 15.30**

**Date Title**

28 Jan M.R. James, 'Oh, Whistle, and I'll Come to You, My Lad' (1904) e-text available:

<https://ebooks.adelaide.edu.au/j/james/mr/antiquary/chapter7.html> **OR** <http://gaslight.mtroval.ca/owhistle.htm>

There's a BBC television version [1968], directed by Jonathan Miller and featuring Michael Hordern, available on Youtube:  
<http://www.youtube.com/watch?v=mYjtxHHjZoo>

04 Feb R.L. Stevenson, *Dr Jekyll and Mr Hyde* (1886)

11 Feb Sarah Waters, *Affinity* (1999)

18 Feb NO CLASS

25 Feb Sarah Waters, *Affinity* (1999)

03 Mar Susan Hill, *The Woman in Black* (1983)

10 Mar Hilary Mantel, *Beyond Black* (2005)

17 Mar Hilary Mantel, *Beyond Black* (2005)

We will continue our exploration of literary techniques with this course. We'll read a series of short stories and novels, and consider how these writers create a particular atmosphere in their work. This is a seminar-style course of seven sessions which is likely to be very popular so you are asked to make a firm commitment to attend. Room capacity makes it necessary to adopt a booking system for places.

**To book a place on this course, please e-mail [exploreitprog@gmail.com](mailto:exploreitprog@gmail.com) and write 'Bronwen Calvert Booking' in the header. Bookings will be taken from Monday 4th January until Wednesday 6th January 2016 inclusive.** Please note that only bookings received by e-mail will be considered. Acknowledgement and confirmation of your booking will be sent by e-mail. Enrolment will be strictly on a first come, first served basis for up to 20 members. A parallel course will be held on Friday mornings (10.30–12.00) should enrolments substantially exceed twenty. You are asked to state in your email, your willingness to swap days should it be required.



## Thursday

**Science Course:** *from 14th January to 11th February*

**Mathematical Thinking through Puzzles and Problem Solving**

**Tutor:** Maria Goulding and Peter Pool

**Venue:** White Room, 4th floor, Commercial Union House, Pilgrim Street, Newcastle upon Tyne

**14.00 to 15.30**



This will be the second round of sessions that are about **mathematical thinking**, and **not** about knowing a large amount of formal mathematics. The problems, puzzles and games that we will present will be new but, as last year, can all be accessed with mathematical knowledge that is simple but not trivial. The taster session will use a few simple starting points to get everyone thinking and then compare how different people have approached the problems, leading to ways of reasoning about our solutions. Then each week we will start with one or two problems addressing different sorts of mathematical thinking such as being systematic, making connections, having insights, being persistent, proving/disproving, generalizing, tolerating uncertainty and reasoning.

**History Course :** *from 18th February to 17th March*

**A History of British Town Planning**

**Tutor:** John Griffiths

**Venue:** White Room, 4th floor, Commercial Union House, Pilgrim Street, Newcastle upon Tyne

**14.00 to 15.30**



The shape of our cities and towns has been defined and altered by developing and changing trends in town planning and urban design. This course will look at the history of planning from early times to the present day, examining changing styles and the ideas behind them.

## Thursday

**History Course:** 14th, 28th January, 11th, 25th February and 10th March

### Early Chivalry and Anglo-Norman Literature

**Tutor:** Miguel Angel Gomes

**Venue:** Green Room, 4th floor, Commercial Union House, Pilgrim Street,  
Newcastle upon Tyne

**19.00 to 20.30**

From *La Chanson de Roland* to the Lais of Marie de France, we will explore the world that followed the Norman Conquest through some of the most celebrated literary works of the period. Join us on a journey to meet the pioneers of epic and romance.



**History Course:** 21st January, 4th, 18th February, 3rd and 17th March

### Bernician Studies Group

**Tutor:** Colm O'Brien and [Max Adams](#)

**Venue:** Green Room, 4th floor, Commercial Union House, Pilgrim Street,  
Newcastle upon Tyne

**18.30 to 20.30**

This independent study group meets fortnightly during Explore seasons in Commercial Union House. Current work includes investigating 'Cocwudu' - a possible ancient woodland between Wansbeck and Coquet; further magnetometry work around Heavenfield; and our continuing project researching the Early Mediaeval monastic sites we have identified in Ireland. Explore members are welcome to join the CUH sessions reporting on and discussing this work and other topics of interest. (For insurance reasons, only members of the BSG itself can participate in fieldwork.)



## Friday

### **Weekday Literature Special** *One-off 22nd January*

#### **From Poem to Play: *Venus and Adonis* sets Shakespeare on the Path to *As You Like It***

**Tutor:** Pamela Woof

**Venue:** Room 3, 3rd floor, Commercial Union House, Pilgrim Street, Newcastle upon Tyne

**10.30 to 13.30**

The pursuit of love: a mature woman's desire for a virginal boy, and she a goddess and powerful, and he in flight, preferring the chase and the hunt to making love. The possibilities are richly comic, erotic and profound. Above all, Shakespeare, still below thirty, was a poet, and *Venus and Adonis*, his first publication (1593), gives life to feelings that we recognize, and lets us stray for a time in the Warwickshire woods that are like the woods we know. *Venus and Adonis* is readily available online and in most editions of the Complete Works of Shakespeare.

### **History Course** *from 29th January to 26th February*

#### **Viking-Age Britain in Five Objects**

**Tutor:** Max Adams

**Venue:** Green Room, 4th floor, Commercial Union House, Pilgrim Street, Newcastle upon Tyne

**11.00 to 13.00**

Max Adams introduces the landscapes of Viking Age Britain in five remarkable objects which tell much more than just the story of their own life histories. From a silver arm ring that is very much like any other silver arm ring, to a book of gospels with an odd note in the margin, to a great ship and a Viking 'mental' map, Max shows how connected and organised a world the period 800-950 was, in spite of its reputation for disaster, pillage and mayhem.



## Friday

### **One day Philosophy Course** *18th March*

#### **Life in the Making**

**Tutor:** Michael Bavidge

**Venue:** Green Room, 4th floor, Commercial Union House, Pilgrim Street, Newcastle upon Tyne

**10.30 to 12.00, 13.00 to 14.30 and 15.00 to 16.30**

We grow up. Our personalities are formed gradually. Knowledge, capacities and skills are slowly acquired. We are not parachuted into life, into the thinking life, into language, into the good life. We will discuss how we are embedded in the world. What must the social world be like for it to be accessible? What must we be like to be able to enter it?

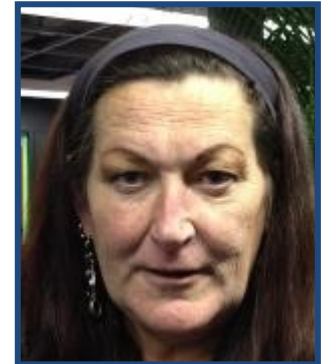
### **Practical Art Course** *Fridays 29th January, 5th, 12th, 19th and 26th February*

#### **Creating a Portrait**

**Tutor:** [Lizzie Rowe](#)

**Venue:** White Room, 4th floor, Commercial Union House, Pilgrim Street, Newcastle upon Tyne

**14.00 to 15.30**



A friendly, informal class suitable for all levels of experience. We will learn how to approach making a portrait from life. Even if you have never drawn or painted before, you can try out some of the basic steps required to capture a likeness. We will be using any medium suitable for drawing and sketching **except oils**.

Please bring your own materials. You may be asked to contribute a small charge to offer the sitter an honorarium

As spaces are limited, please book a place on this class by emailing [weareexplore@gmail.com](mailto:weareexplore@gmail.com) or **contacting the Explore Office directly**.

## Saturday

### Science Course:

#### Who wants to Live Forever? - The Search for Immortality

**Tutor:** Beatrix Groves

**Saturday 16th January** 10.00 to 13.00

**Venue:** Green Room, 4th floor, Commercial Union House, Pilgrim Street, Newcastle upon Tyne



Why do we have to die? Suppose we could live forever? Would you want to, and what would be the consequences?

This session will examine the science behind ageing and our decline, and look at the efforts that have been made in extending human life. It will also analyse the consequences of living a long-life (or even being immortal!) from the philosophical and sociological points of view. Though this is a problematic and sensitive subject area, we will attempt to look at the intriguing side of our increasing longevity and maintain an objective standpoint throughout.

### History Course:

#### Icelandic Sagas

**Tutor:** Miguel Angel Gomes

**Saturday 23rd January** 10.00 to 12.30

**Venue:** Green Room, 4th floor, Commercial Union House, Pilgrim Street, Newcastle upon Tyne



Described as one of the great treasures of world literature, the Icelandic sagas tell the stories of men and women, settlers and explorers, who lived in a world where fact and myth inhabited a common landscape. This session will show that these texts are still highly readable, highly contemporary.



## Saturday

### Practical Art Course :

#### Drawing Landscapes : Newcastle upon Tyne

**Tutor:** Silvia Mendoza Vera

**Saturday 30th January 10.30 to 13.30**

**Venue:** White Room, 4th floor, Commercial Union House, Pilgrim Street, Newcastle upon Tyne

This workshop will be suitable for all levels of experience and members with different drawing skills. Any medium suitable for drawing will be used e.g. acrylic paints, charcoal, ink, water colours, pastels, tempera but not oils. Students need to bring their own materials, although the tutor will provide some.

Working from pictures of diverse urban landscapes provided by the tutor, or brought by the students themselves, members will create their own personal and subjective interpretation of more or less iconic buildings of England's North East. The tutor, an artist herself, will guide the drawing compositions technically, however, students will be encouraged to take their own perspectives on the visual 'reading' of the chosen piece of architecture.

As this is likely to be a very popular class and spaces are limited, please email [weareexplore@gmail.com](mailto:weareexplore@gmail.com) or **contact the Explore Office directly** to book a place on this class.

### North East Ancient Egypt Society

#### 'He Found It Like Heaven Within'

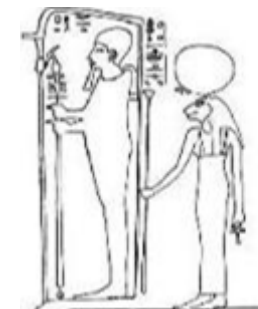
**Tutor:** Margaret Maitland

**Saturday 6th February 13.30 to 16.00**

**Venue:** Green Room, 4th floor, Commercial Union House, Pilgrim Street, Newcastle upon Tyne

Margaret will discuss the decoration of Middle Kingdom tomb chapels, with their many interesting new themes in iconography and scene-types, from warfare to laundry, reflecting changes in ancient Egyptian society and how the elite presented themselves.

For the rest of the 2016 programme see : <http://sites.google.com/site/neaesoc> [at present this shows the 2015 programme]



## Saturday

### History Course:

#### The Chinese Cultural Revolution

**Tutor:** John Griffiths

**Saturday 13th February** 10.00 to 12.30

**Venue:** White Room, 4th floor, Commercial Union House, Pilgrim Street, Newcastle upon Tyne



The Cultural Revolution was launched by Mao Zedong in fifty years ago in 1966 as an attempt to reassert his waning power over the Chinese Communist party. It resulted in catastrophic disorder and near civil war in its peak years, the overthrow of much of the country's leadership and the terrorisation of its intellectual elite, and ten 'lost years' for the country's youth. The effects of the Revolution still have a great influence on China's governance today.

### Art History Course

#### Reading the Sixties : Making Sense of Pop, Pop Culture and Art

**Tutors:** Peter Quinn

**Saturday 27th February** 10.00 to 13.00

**Venue:** Green Room, 4th floor, Commercial Union House, Pilgrim Street, Newcastle upon Tyne



## Saturday

### Practical Art Course:

#### On your Marks—Explore! A Drawing / Printmaking Workshop for Everyone

**Tutor:** Margaret Adams

**Saturday 5th March** 10.30 to 13.30

**Venue:** White Room, 4th floor, Commercial Union House, Pilgrim Street, Newcastle upon Tyne

Margaret is running workshops that explore simple printmaking techniques from mono-printing to Lino-cutting. The next workshop will continue with Lino-cutting and introduce the presentation of print using simple book format and paper preparation. You will need to bring an idea or ideas (or images) that could be developed into a series of four prints. This is a workshop for all levels of skill. Newcomers are very welcome and will have the opportunity to explore some of the techniques that we have already covered. Please wear old clothes. There will be a small charge for materials.

Places will be limited and therefore booking is necessary. Please email [weareexplore@gmail.com](mailto:weareexplore@gmail.com) or **contact the Explore Office directly** to book a place on this class.



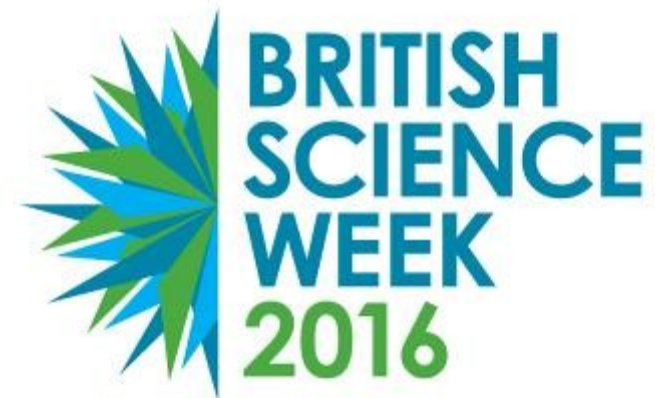
### Science Course:

#### SCIENCE DAY

**Saturday 12th March**

**Venue :** tbc

We hope to have research scientists telling of their work in mitochondrial donation (the so-called discussion and debate. Check us out on the [British Science Week](http://www.britishsociety.org) website!



## Saturday

### Science Course:

### The Flowers that Bloom in the Spring

**Tutor:** Gavin Hardy

**Saturday 19th March** 10.00 to 13.00

**Venue:** Green Room, 4th floor, Commercial Union House, Pilgrim Street, Newcastle upon Tyne



The first flowers of the year have a very short time available for them to bloom and set seed. Gavin Hardy will look at their ecology, and the measures they take to ensure their survival from year to year. This will be the last session of the season, so perhaps these flowers can by then be seen as well as heard about!