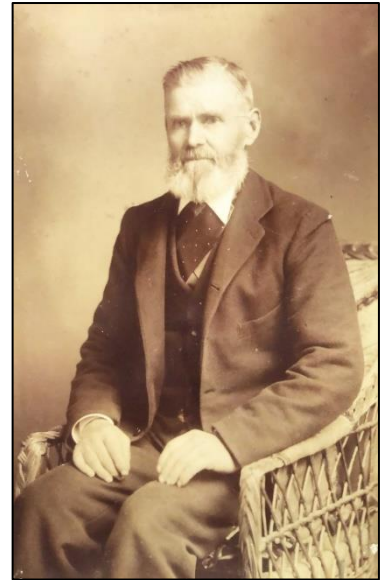


## SAMUEL TRELEAVEN, COLT BREAKER

1834 – 1915

At our recent History Open Day, Marc Treleaven travelled from Plympton to share with us his photographs of an ancestor, Samuel Treleaven, who lived in St Tudy at the turn of the 19<sup>th</sup>/20<sup>th</sup> century, and who is buried in the Churchyard.

Born at St Kew, Samuel was the son of labourer John Treleaven and his wife Elizabeth. The 1881 census records Samuel living at Egloshayle with his wife Mary Ann, nee Woolcock, and seven children. As a young man, Samuel had worked on the land as a 'Farm Servant', but in 1881 his occupation was listed as 'Colt Trainer', like his uncle.



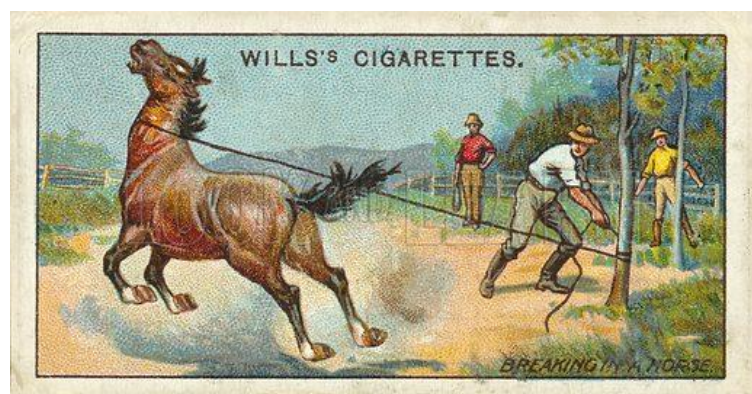
Mary Ann Woolcock 1835-1882



early photograph of Samuel Treleaven at work

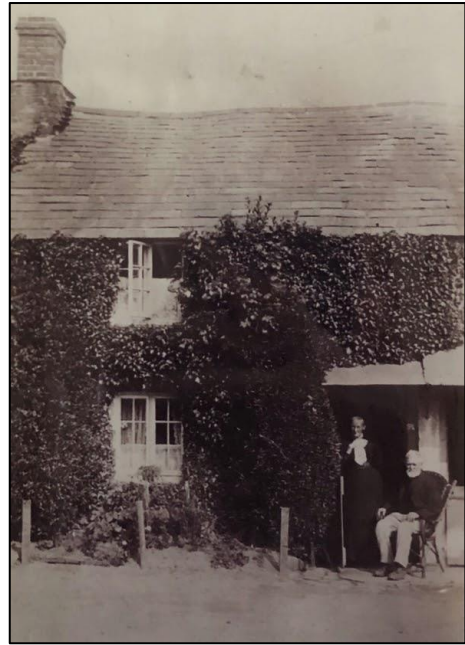
Later that year the family moved to School View in St Tudy Churchtown. Shortly after, in April 1882, Mary Ann died of natural causes and was buried in St Tudy, leaving Samuel with seven children living at home. He married for a second time in 1866, to Ann Wilce Pooley. They remained at School View and in the 1901 census Samuel, aged 66, was still working as a Colt Breaker.

It was Marc who told us of the Colt Breaking Post that his ancestor had used. It may be seen even today, tucked into the hedge by the gate at School View. Although it once stood taller and was positioned further out into the roadway, the grooves in the post hint at its past use. Breaking a colt or horse in this way was a noisy and violent process, as illustrated here, and must have caused quite a distraction at the nearby school.





School View, early 1900s (possibly Treleaven family members)



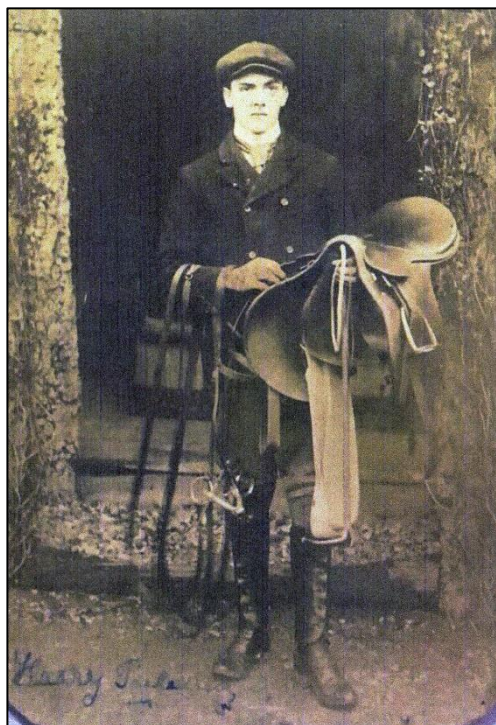
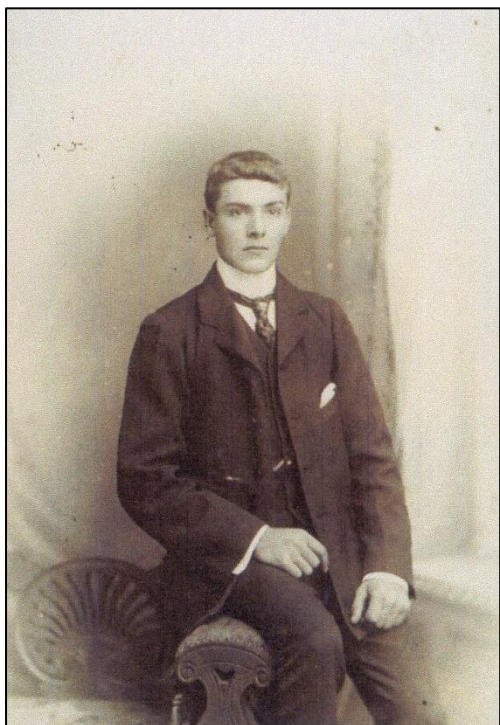
Samuel & Ann at School View

Samuel, aged 76 in 1911, still worked as a Woodman having retired from horse breaking. He died in 1915 and was buried at St Tudy though, sadly, there is no headstone to mark his grave.

It can be seen from the Treleaven Family Tree below that five of Samuel's sons also followed the family tradition of working with horses. James is Marc's great grandfather, making Samuel his great great grandfather.

		Ann TRELEAVEN				
	John TRELEAVEN	m	Elizabeth			Samuel TRELEAVEN
	Labourer					b. 1795 St Kew d. 1877 Lanteglos
		Samuel TRELEAVEN	m1	Mary Ann WOOLCOCK		<b>HORSE BREAKER</b>
		b.1834 St Kew d. 1915 St Tudy		b. 1835 Egloshayle d. 1882		
		<b>COLT BREAKER</b>			m2 Ann Wilce POOLEY 1886	
Mary Jane b. 1856 St Kew	Samuel TRELEAVEN b. 1858 St Kew	Edwin TRELEAVEN b. 1859 St Kew d. 1949 Bristol	Lucy b. 1864	David H TRELEAVEN b. 1866 d. 1887	Martha Ann b. 1868	Wesley TRELEAVEN b. 1870 d. 1903 Totnes, Devon <b>JOCKEY</b> in 1891 <b>HORSE DEALER</b> in 1901
		<b>COLT TRAINER</b>		<b>THROWN FROM HORSE</b>		
	Emily b. 1872	James TRELEAVEN b. 1874 Lostwithiel		Juliana b.1876		Harry TRELEAVEN b. 1881 Egloshayle d. 1958 Epping
		<b>COLT BREAKER</b> died after being kicked by a horse				<b>COACHMAN/CHAUFFER</b>

This is Samuel's youngest son, Harry Treleaven who was a Coachman and later, in the age of the motor car, a Chauffeur. He moved away from Cornwall, marrying Minnie Elizabeth Kate Howard in Woburn, Bucks., in 1902. He died in Epping in 1958.



1901

Thank you, Marc, for sharing Samuel's story and for shedding light on this interesting piece of St Tudy history

Angela Aylward & Marc Treleaven 2023