

**Monday 8th January, 2024**

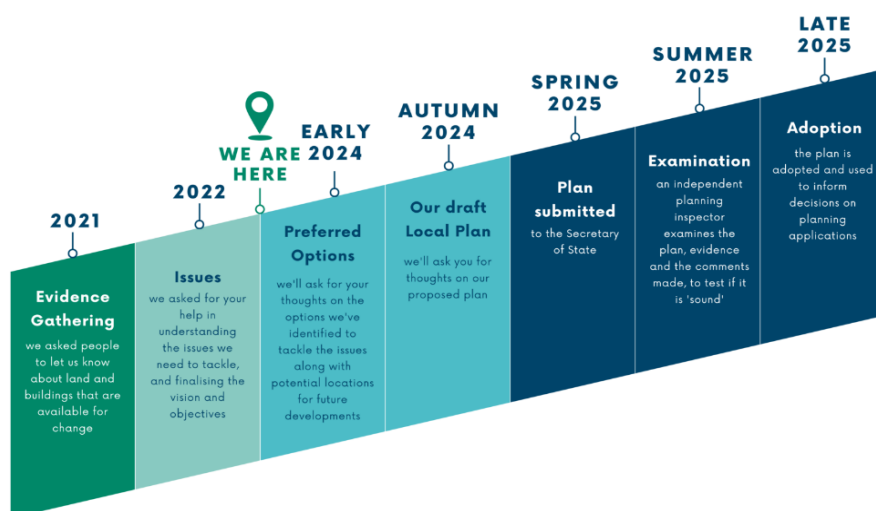
Monthly Parish Update

Vale of White Horse District Councillors

**Cllr Hayleigh Gascoigne and
Cllr Debra Dewhurst**

Hello from Hayleigh and Debra

Happy New Year! January will be a busy month for the district council. From the 10th January you will be able to comment on the 'preferred options' of the Joint Local Plan (JLP) that the Vale of White Horse District Council have been working on together with South Oxfordshire District Council. The JLP will set out the kinds of new housing and jobs needed and where they should go. It will inform planning application decisions for the districts. It will also have policies to help address the climate emergency, restore nature and meet the needs of residents, such as delivering genuinely affordable low-carbon homes with the right infrastructure to go with it. The figure below shows where we are in the process of developing the JLP.



Now we need your input again. From the 10th January there are two ways to read the current version of the JLP (the preferred options) and make your comments: for a detailed look at the plan go to <https://jlp.southandvale.gov.uk/> or for a briefer look go to "JLP in a Nutshell" at <https://theconversation.southandvale.gov.uk/>. For Parish Councils we recommend the first link.

As always, if you have any questions or suggestions for us as councillors, please do email us. As a reminder, council meetings are held in public and if you wish to address council or committee, you can contact Democratic Services ahead of time. If you need more guidance on this, please let us know!

We use these monthly updates to keep you updated on our activities and general council news. We also post on our councillor Facebook Pages:

www.facebook.com/CllrHayleigh & www.facebook.com/Debra4BlewburyAndHarwell

Please get in touch with any issues or concerns via email
hayleigh.gascoigne@whitehorsedc.gov.uk and debra.dewhurst@whitehorsedc.gov.uk

Community Support

Community Hub

The Hub can offer support and direct people to help on a range of things including Cost of Living, food support, etc. If you are struggling financially or just finding life difficult, the community hub can help. Whether it's practical support or just advice, please get in touch:

- **Call:** 01235 422600
- **Email:** communitysupport@southandvale.gov.uk

The office hours are 8.30am - 5pm Mon to Thurs, 8.30am-4.30pm on Fri (and closed on bank holidays).

Flooding

The main helpline for people to call for advice, guidance and support related to flooding is: 0345 988 1188.

This is the Environment Agency's 24/7 flooding support line.

If it's an emergency and somebody is in danger, residents should **call 999**.

Full details of flooding advice and guidance:

- [The county council's regularly updated flooding information page](#) – this contains all the links and advice residents should need.
- [The county council's Flooding Toolkit](#) (which our districts part-funded)
 - [What to do if you're flooding](#)
- The Environment Agency's flooding helpline (24 hours a day, 7 days a week)
 - Telephone: 0345 988 1188
 - Textphone: 0345 602 6340
- If it's a flooding emergency you should focus on the safety of yourself and your family. **Dial 999 if it is an emergency** and you or someone else is in danger.

Avoid driving through flood water and avoid towpaths. Flood water is not clean and not suitable for children to play in. There might be hidden hazards under the water such as manhole covers that have lifted. Anyone who has been in flood water should wash their hands at the soonest opportunity.

Flood Warnings

Use this website to find the latest on flood warnings in the local area.

[Check for flooding in England - GOV.UK \(check-for-flooding.service.gov.uk\)](https://check-for-flooding.service.gov.uk)

White Horse Community Lottery

Our White Horse Community Lottery provides local organisations and charities with vital funding to be able to continue to support our communities and make a positive difference in our district.

Local voluntary groups and charities can register free of charge! Look out too for regular prizes shared on our social media.

How it works

Tickets cost just £1 and players can choose which local good cause(s) they want to support when they purchase tickets. Prizes range from free prize draw entries to a £25,000 jackpot.

[To buy your tickets just head to the official website for the White Horse Community Lottery](#) – Good Luck!

From every £1 ticket sold

- 50p goes to registered good causes and 10p into a general fund, known as the White Horse Community Fund, which supports the voluntary sector in Vale of White Horse
- 20p to the prize fund
- 17p to Gatherwell, the external lottery management operator that runs the lottery on our behalf
- 3p to VAT

[Find out more about the community lottery on our website](#)

Local News

Valley Park Update

This section of our report provides an overview of the current live planning applications for Valley Park. There are often several live applications relating to the development, however those labelled 'RM' i.e. 'Reserved Matters' are typically the most noteworthy as they request planning permission for specific parcels of housing on the development. Residents and parish councils can provide comments on these applications during the consultation period. Officers look at these comments and (where considered relevant to planning matters) seek to address them with the developers. Applications labelled as 'DIS' i.e. 'Discharge' relate to specific conditions from the outline planning permission and are not usually open for public consultation. The current live planning applications for Valley Park are listed below along with an update on the status of each provided by the Vale planning officers.

With recent extreme weather events, local residents are understandably concerned about the impact more homes has on the ability of the surrounding area to cope. The Environment Agency is a consultee for planning applications and as such issues advice on flooding matters. As you can see from this current round of applications, P22/V2744/RM has been delayed for a considerable amount of time, in part due to its location in a flood zone 1.

Application Decided

P23/V2247/DIS – application seeking approval of water course crossings – condition 28 of the outline planning permission

Refused. The details are considered adversely harmful to the watercourse banks, stream bed and a barrier to the movement of wildlife along the water course corridors.

Applications Under Consideration

P22/V2744/RM – 246 dwellings – Taylor Wimpey first housing parcel

As mentioned previously, parts of this parcel of land are in flood zones 2 and 3 and therefore, could be susceptible to fluvial flooding. Condition 36 of the outline planning permission excludes built development from flood zones 2 and 3 but the plans show housing in these areas which is not acceptable. Taylor Wimpey submitted flood modelling to the Environment Agency in September 2023 seeking to demonstrate that flooding is not an issue on site and that the Environment Agency's flood maps should be revised to categorise the site as flood zone 1 which is an acceptable location for housing. The Environment Agency did not accept the flood modelling and Taylor Wimpey has now submitted further flood modelling to the Environment Agency and their response is still awaited.

Meanwhile, Taylor Wimpey submitted further revised plans in December seeking to address previous comments raised by officers. We have responded to those revisions and await Taylor Wimpey's reply.

P22/V0604/RM – infrastructure for Persimmon and Taylor Wimpey first housing parcels

Amended plans received on 1 December were added to the file and consultation undertaken including with Western Valley and Harwell Parish Councils who have responded (no objection from Western Valley; an objection from Harwell on grounds of development in the flood plain). The revisions and all consultation responses need to be reviewed and considered by officers.

P22/V2624/DIS – approval of details reserved by conditions 23 and 24 (surface and foul water drainage) of the outline planning permission

No change - This application has not progressed since previous updates i.e. we have requested cross sections for the proposed swales and attenuation basins and asked the applicant to address the Vale drainage engineer comments together with demonstrating that the drainage scheme can be accommodated with other proposed infrastructure e.g. footways and cycle ways and meet the Strategic Design Code expectations. This application is also held up as it overlaps with the two RM applications above.

P23/V0659/DIS – approval of details reserved by condition 33 (Travel Plan) of the outline planning permission

Officers understand that the developers have approached OCC directly to discuss the content of the travel plan and we expect a revised travel plan submission once those discussions are concluded.

New Applications**P23/V2835/NM – revision to condition 10 (framework plan) of the outline planning permission**

The application seeks to add the words highlighted below to the condition so that it reads:

*“With the exception of the access works and associated infrastructure, **foul pumping station(s), electricity sub stations, telecommunication cabinets** and primary streets as defined on the illustrative access and movement plan no development shall be commenced, or any reserved matters application approved in a Framework Plan Area identified in condition 9 until the Framework Plan covering that area has been submitted to and approved in writing by the Local Planning Authority. Each Framework Plan shall include the details of: a) Permeability and road hierarchy (including location of key secondary roads); b) Public transport accessibility (including bus routes and bus stop locations); c) Location of residential built development; d) Location of community infrastructure (details of which are to be provided in Development Briefs in accordance with Condition 8); e) Guidance on scale, materials, building heights/ lines/ layout and features; f) Parking strategies including on plot and visitor parking; g) Integration of foul water pumping station(s), electricity sub stations and telecommunication cabinets. The details in reserved matters applications shall be substantially in accordance with the approved Framework Plans.”*

P23/V2664/DIS – approval of details reserved by condition 10 (framework plan) of the outline planning permission

This application seems to revise the currently approved Framework Plan covering Taylor Wimpey's first housing parcel, to reflect their current reserved matters application submission (application P22/V2744/RM). Officers need to review the application.

P23/V2813/DIS - approval of details reserved by condition 3 (ecological construction management plan (ECMP)) of the reserved matters approval under application P23/V0667/RM

Condition 3 was imposed as the ECMP submitted with application P23/V0667/RM did not include contact details for a project manager, site manager and ecological clerk of works. These details have now been added.

Climate & Environment News

Successful residential waste collection contract extended

One of the country's most successful residential waste collection contracts has been extended this month. South Oxfordshire and Vale of White Horse District Councils announced an agreement today, to extend their joint contract with waste contractor, Biffa, for two more years.

Council News

December's Full Council meeting

In its last full meeting of the year, council debated significant points of interest to the district and its future, with a motion restating the Vale's opposition to the proposed reservoir, SESRO. It also considered the upcoming consultation to the council's forthcoming joint local plan and its future commitment to climate action and nature recovery.

Vale of White Horse District Council met on Wednesday 13 December and also considered matters relating to the upcoming budget setting process, due to be finalised in the new year. The council is proud of its record to manage its finances and continues to seek to find a balance between its strong financial position and assessing the needs of its most vulnerable residents, in its council tax reduction scheme for 2024/2025.

Council considered **two motions**. Both motions were agreed.

You can [find all the details of the meeting here](#). You can also view details the [questions to council here](#).

Highlights

Motion opposing Thames Water's Proposed Reservoir: The first motion noted the council's concerns around the Southeast Strategic Reservoir Option (SESRO) set out in the draft regional plan by Thames Water. The council's resolutions included to request a meeting with the current Secretary of State alongside a call for the SESRO approval processes to be paused. Proposer Cllr Robert Clegg-; Seconded – Cllr Andy Cooke

Motion affirming the Council's Commitment to Nature Recovery: The second motion focussed on action on the crisis in nature and our commitment to nature recovery. The council acknowledged the importance of biodiversity and nature and resolved to ensure both were given equal priority with climate change within planning policies and design guides and the new corporate plan. Proposer – Cllr Sarah James; Seconded – Cllr Katherine Foxhall

Unanimous approval of Chilton Parish Council's S106 Request: The council unanimously approved a request for S106 funding for play area/recreation improvements, including accessible equipment for children of all abilities – this is a part of continual commitment of VoWHDC to provide accessible equipment for play areas in the district.

[Have your say on a new political map for Vale of White Horse District Council](#)

The Local Government Boundary Commission wants to hear what residents and organisations think about their local area. The Commission is the independent body that draws these boundaries. It is reviewing Vale of White Horse to make sure councillors represent about the same number of electors, and that ward arrangements help the council work effectively. It wants to be sure that its proposals reflect community ties and identities.

[Action on anti-social behaviour in Wantage](#)

Vale of White Horse District Council has taken steps to tackle a rise in anti-social behaviour in an area of Wantage. Earlier this year, residents and shoppers raised concerns over issues at Mill Street carpark. Known locally as 'The Undercroft', the site was in danger of becoming a hotspot for anti-social behaviour with an increase in reports of unwanted gatherings, littering, graffiti and drug activity. Following an inspection of the area, officers from Vale of White Horse District Council, Thames Valley Police and Oxford City Council identified a series of measures to improve safety and deter further anti-social behaviour from happening.

[The Beacon bounces into spring](#)

Off the back of a busy autumn season, The Beacon has launched its new shows and classes for spring 2024. There are some great shows coming up, including The Jive Aces in January, Dinosaur Adventure Live in February half term, monthly Open Mic Nights and Matt Richardson is back with his Laughing Ox comedy night! There's more info [on the Beacon website](#).

[A statement from Cllr Bethia Thomas, Leader of the Vale of White Horse District Council](#)

"It's been another busy year for us all and I am aware that everyone at the council has been doing their utmost to manage the challenges we face in delivering all that we can for the residents of our district. Looking back, it is clear we have achieved a great deal. The cost-of-living crisis has set many families back in the last few years and our Community Hub has done a fantastic job to help residents with cost-of-living concerns. Speaking with people at local events I have been able to spread the word of what we are able to offer, and our grants team have also been on hand to give advice on our services and available grants including two schemes to help support district's food banks and community larders."

[Follow the link](#) or head to the Vale website to see the full End of Year statement from Leader of the Vale of White Horse District Council, Cllr Bethia Thomas.