



Community Survey Results

Results of the survey of Community Attitudes to Road Safety in Aberfeldy, April 2023

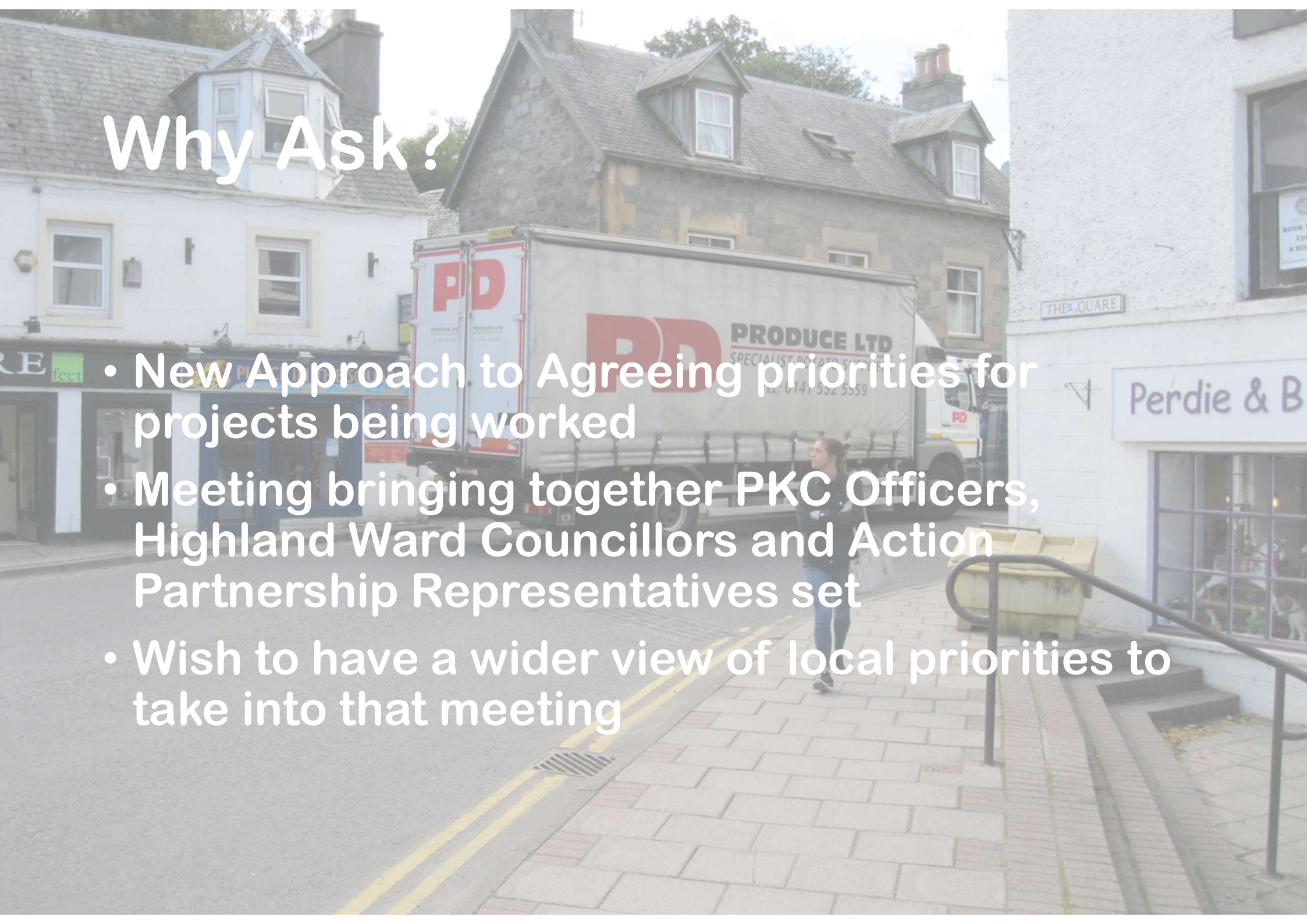
Outline

- Why ask?
- Survey Construction
- Methodology
- Results
- Where next



Why Ask?

- New Approach to Agreeing priorities for projects being worked
- Meeting bringing together PKC Officers, Highland Ward Councillors and Action Partnership Representatives set
- Wish to have a wider view of local priorities to take into that meeting

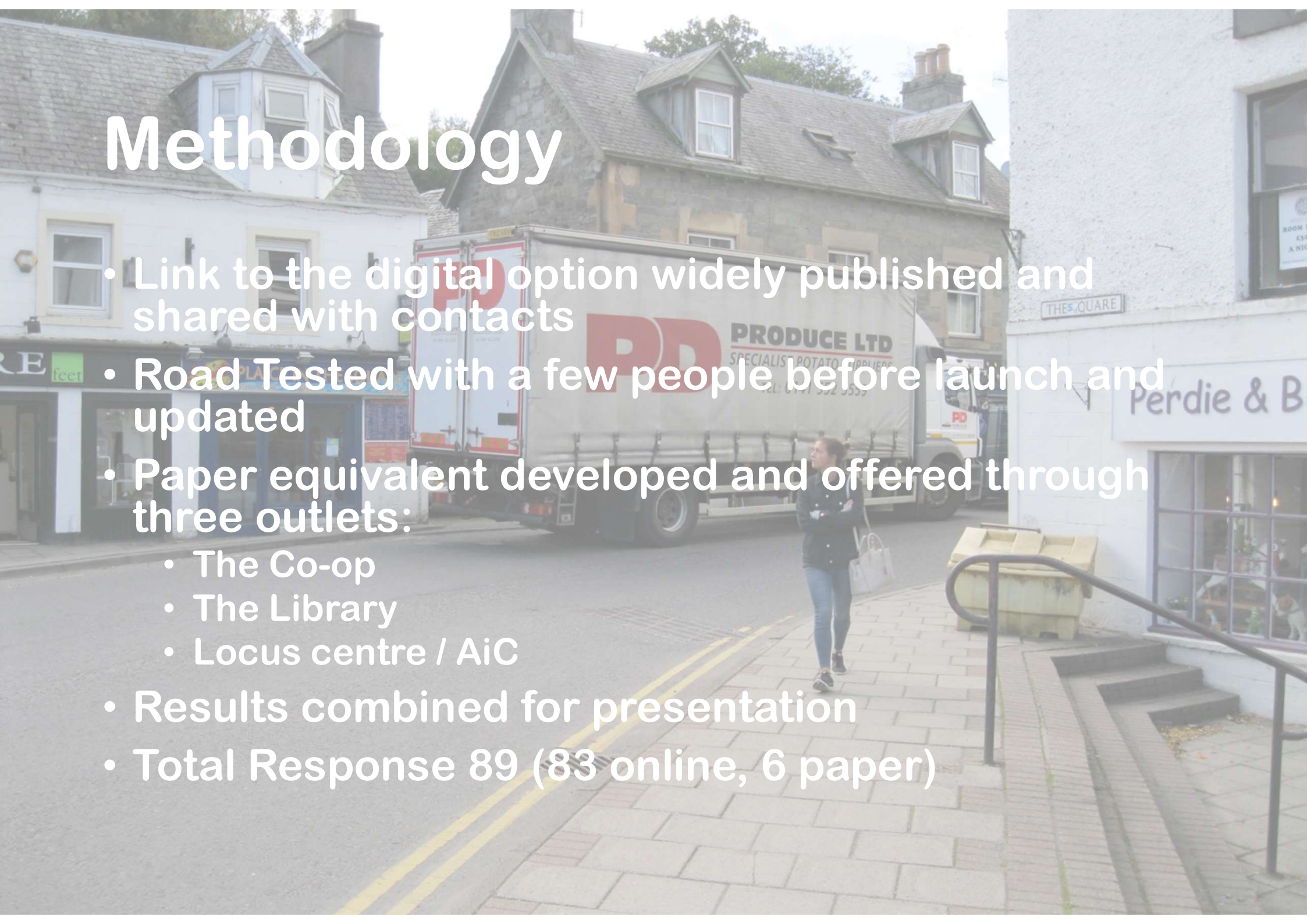


Survey Construction

- Used Google Forms and paper equivalent
- Simple approach – hope to gain more responses
- Basically three questions:
 - Is road safety a priority?
 - Which are the most important hazards to tackle?
 - Which other hazards not on the list need to be tackled?
- The 5 most significant hazards in the view of the Road Safety Group (RSG) was the basis for the survey

Methodology

- Link to the digital option widely published and shared with contacts
- Road Tested with a few people before launch and updated
- Paper equivalent developed and offered through three outlets:
 - The Co-op
 - The Library
 - Locus centre / AiC
- Results combined for presentation
- Total Response 89 (83 online, 6 paper)



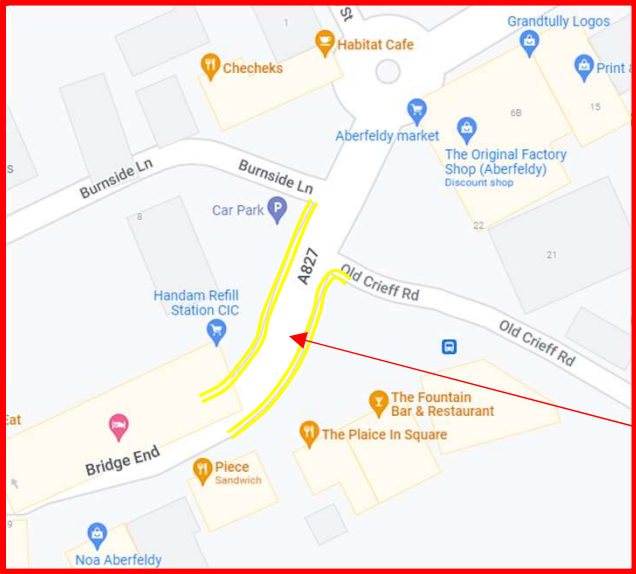
ACC RSG View of Priority Targets

Victoria Park main entrance; safety issue

Tayside Crescent playpark; safety issue

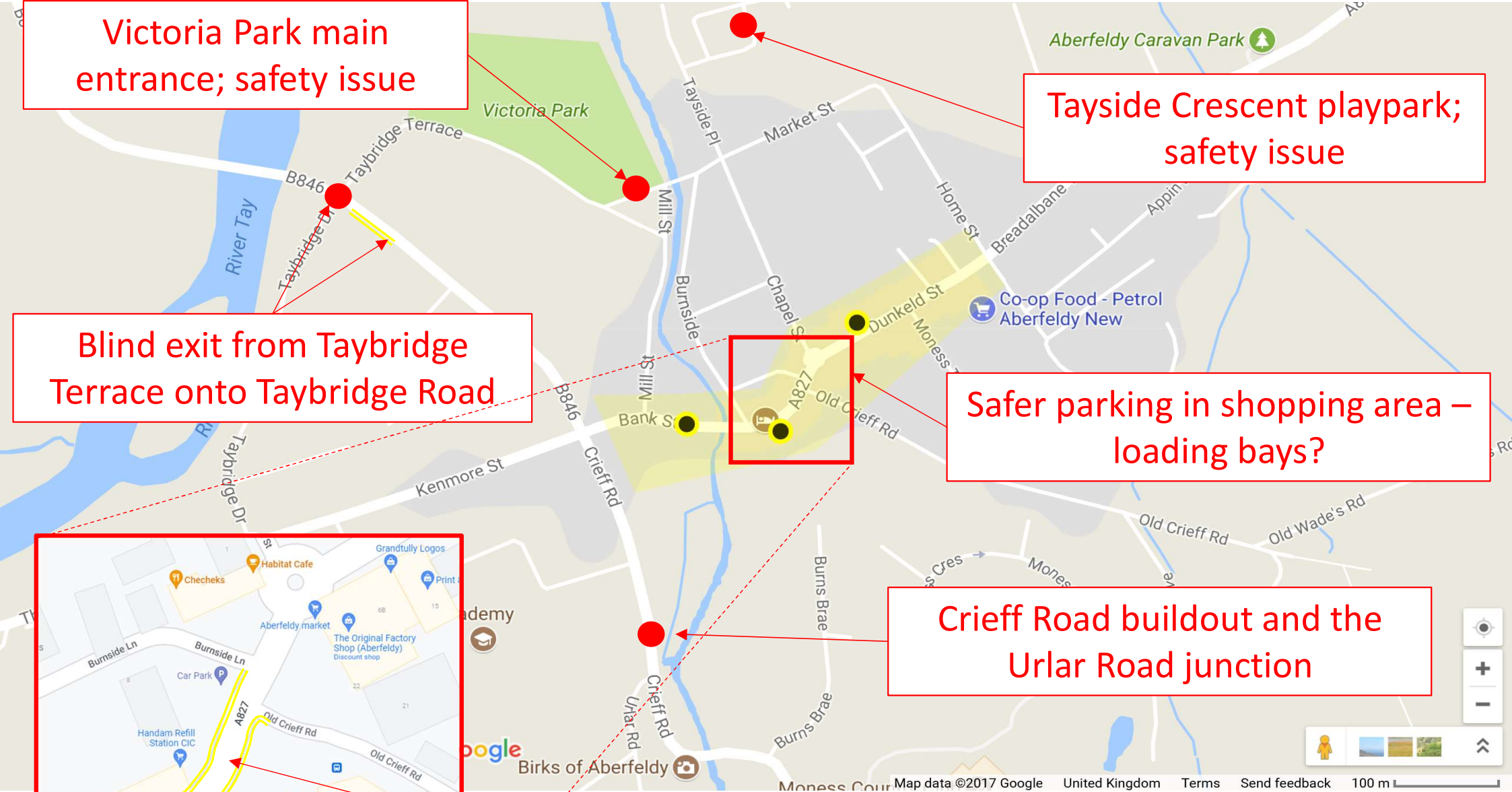
Blind exit from Taybridge Terrace onto Taybridge Road

Safer parking in shopping area – loading bays?

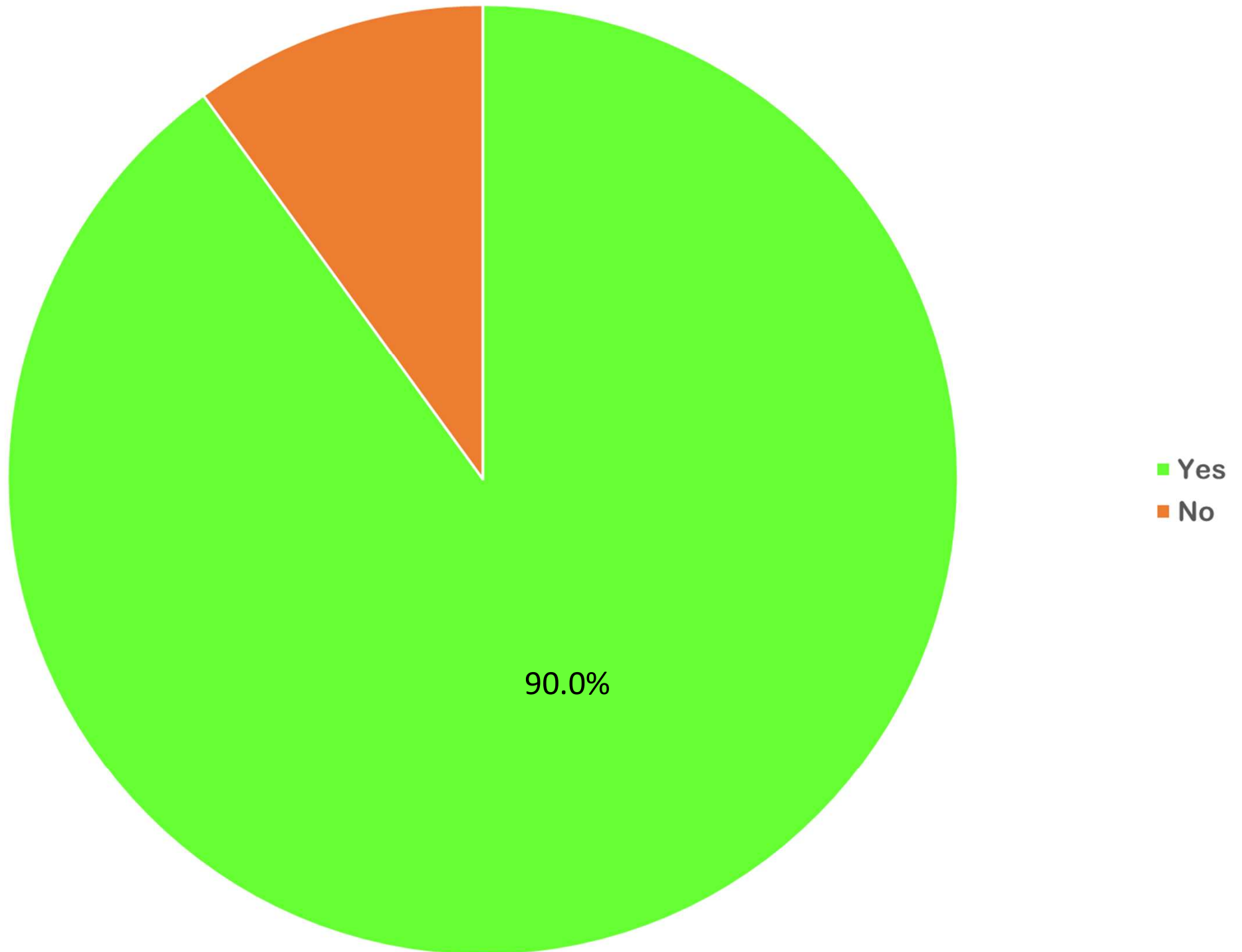


Crieff Road buildout and the Urlar Road junction

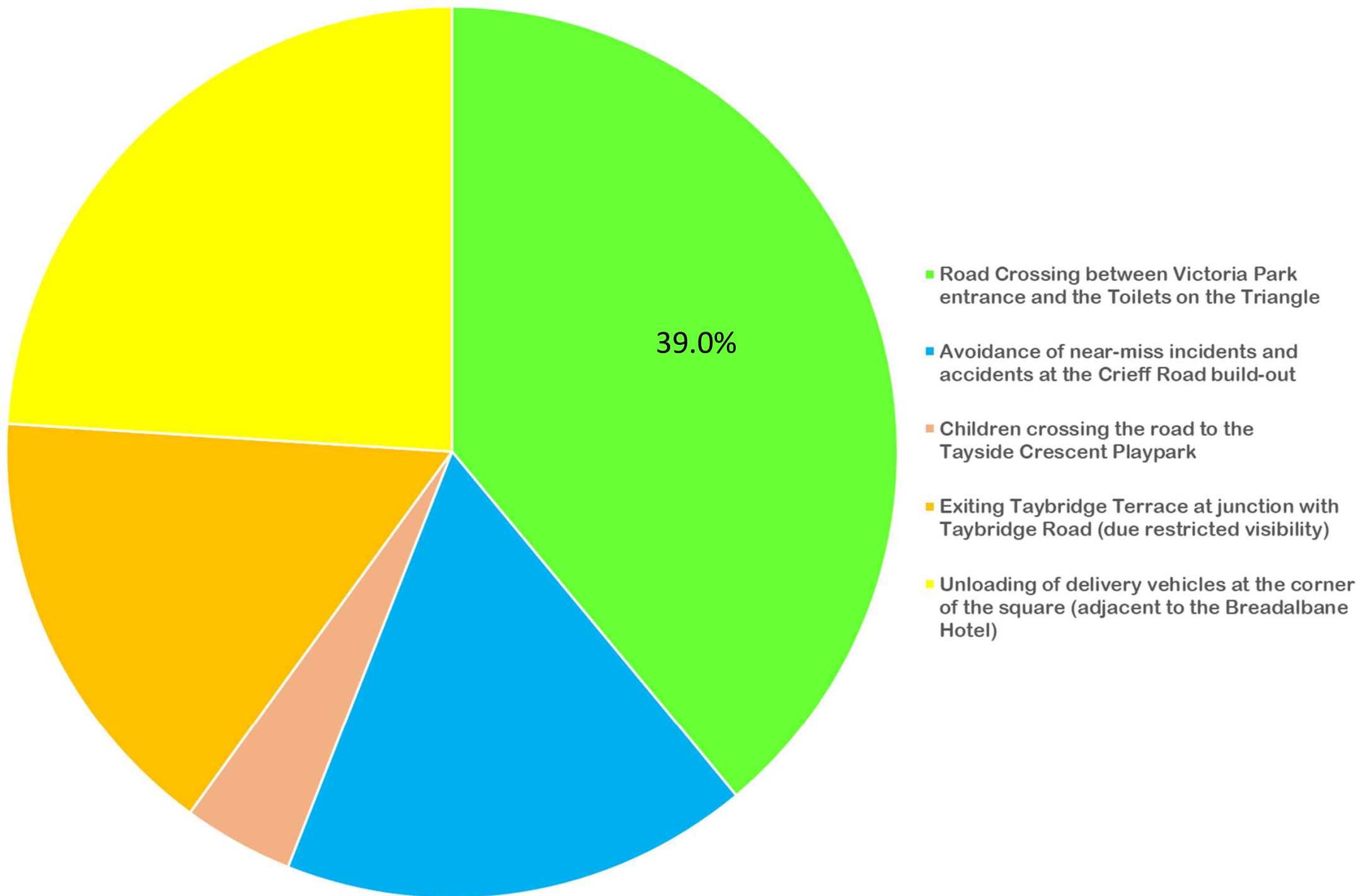
Re-categorise these DYs to be no loading or unloading?



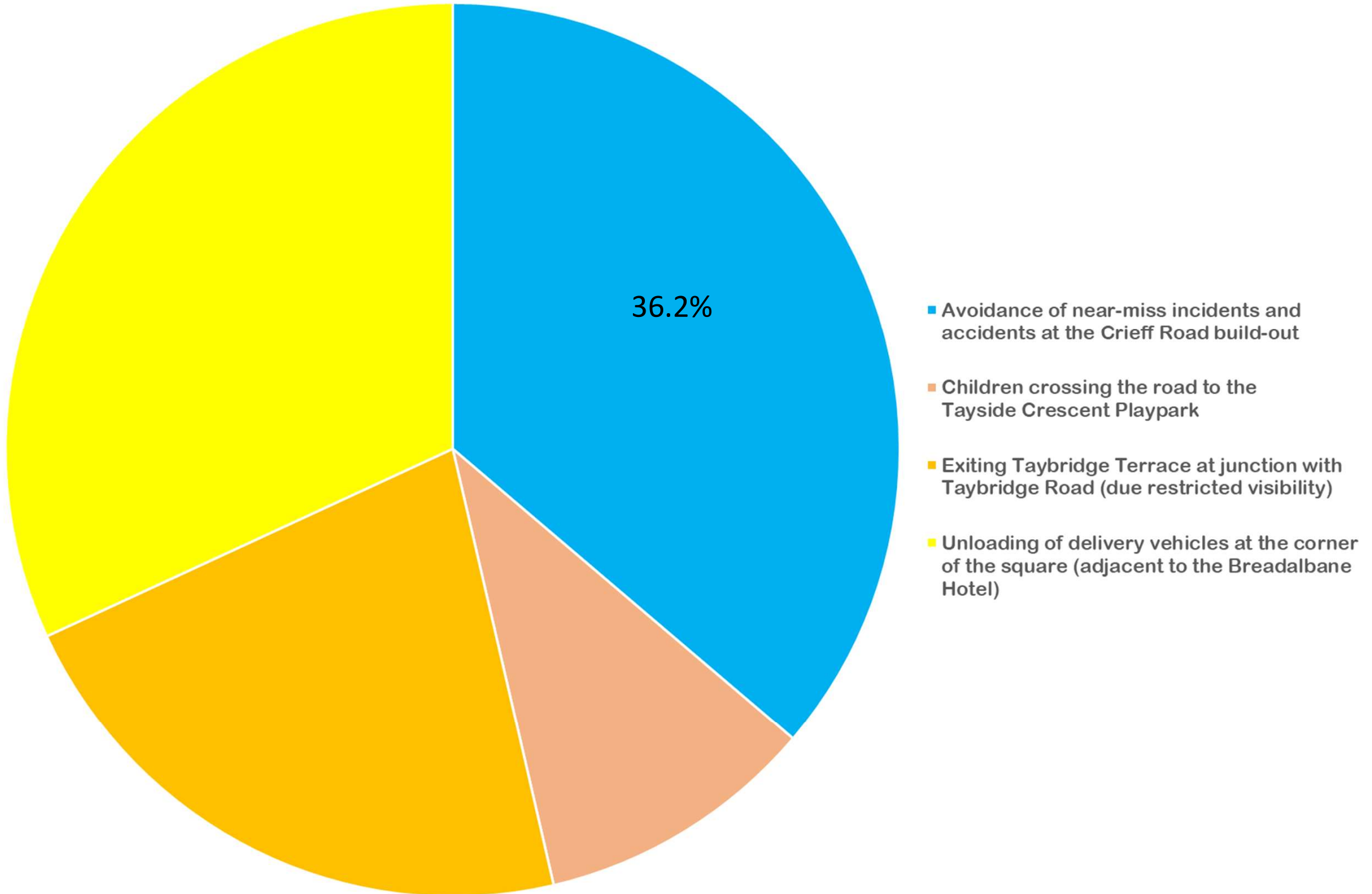
Do you think improving road safety in Aberfeldy is a community priority?



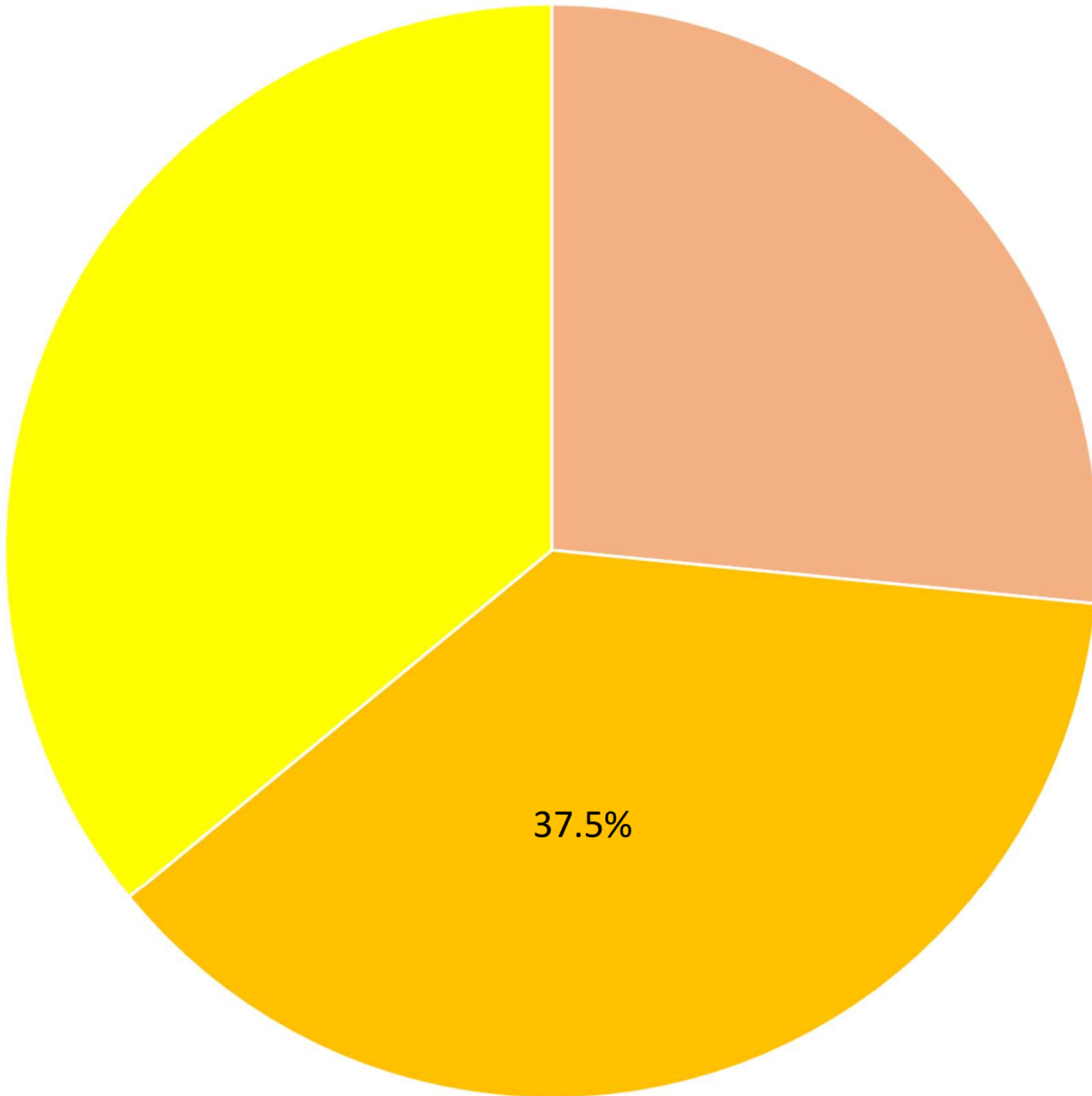
Which of the following identified hazards should be tackled first?



Which of the following identified hazards should be tackled second?



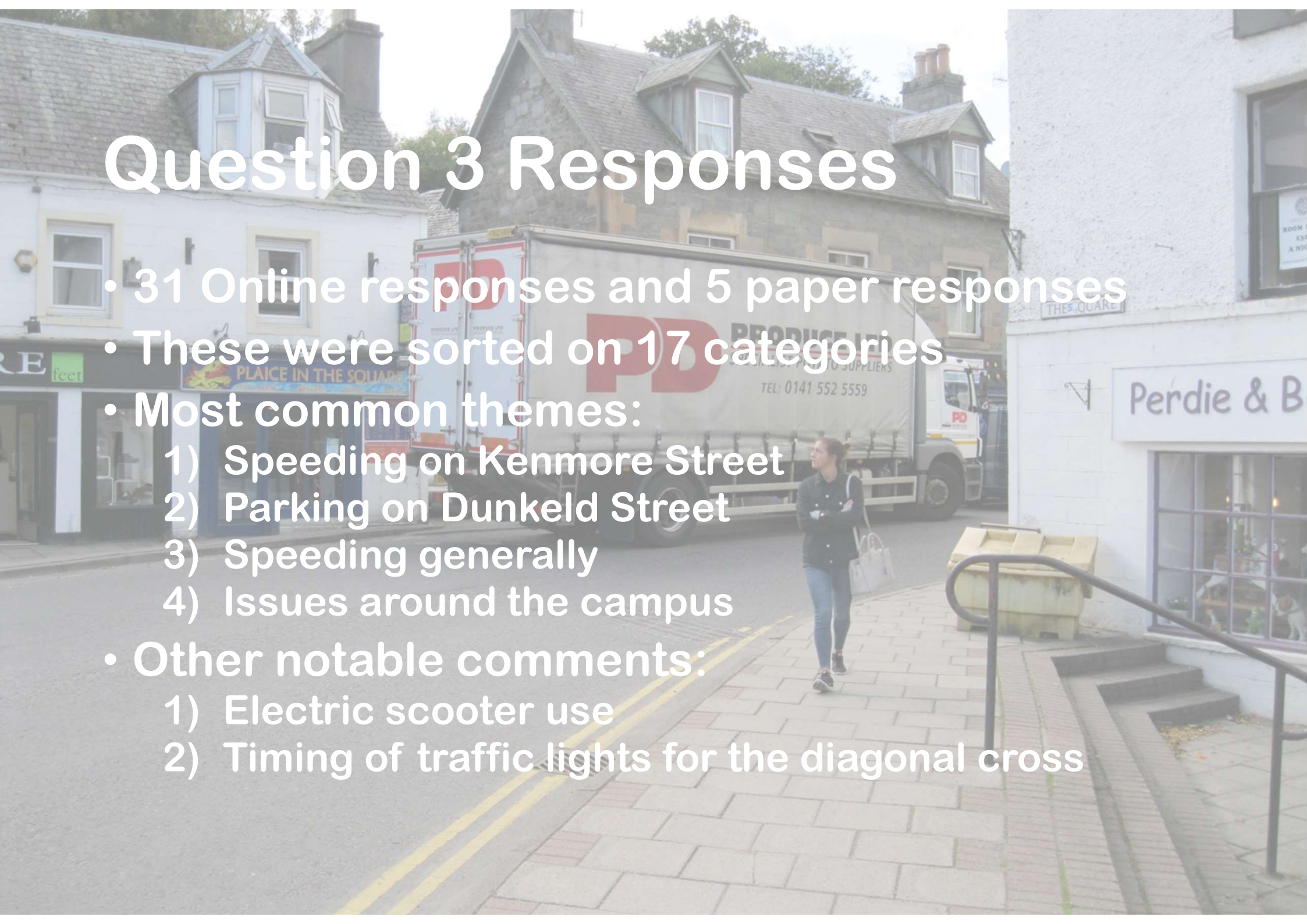
Which of the following identified hazards should be tackled third?



- Children crossing the road to the Tayside Crescent Playpark
- Exiting Taybridge Terrace at junction with Taybridge Road (due restricted visibility)
- Unloading of delivery vehicles at the corner of the square (adjacent to the Breadalbane Hotel)

Question 3 Responses

- 31 Online responses and 5 paper responses
- These were sorted on 17 categories
- Most common themes:
 - 1) Speeding on Kenmore Street
 - 2) Parking on Dunkeld Street
 - 3) Speeding generally
 - 4) Issues around the campus
- Other notable comments:
 - 1) Electric scooter use
 - 2) Timing of traffic lights for the diagonal cross



Outcome Summary

- No 1 priority – Improving safety at the entrance to Victoria Park
- No 2 priority – Avoidance of Near Miss incidents at the Crieff Road Build-out
- No 3 priority – Improving safety at the junction of Taybridge Drive and Taybridge Terrace
- Most common issue in write in responses was excessive speeding



Where Next?

- Meeting scheduled for May 4th
- Goal to establish this as a quarterly practice
- Main aim is to find new way of working making community concerns of greater weight in the process
- The Highland Action Partnership RSG will re-iterate the priority list that it has developed
- For Aberfeldy that remains the Victoria Park Entrance issue