

A scenic view of a road in Aberfeldy, Scotland. On the left, a stone church with Gothic-style windows is partially visible. A road sign on a green pole shows a triangular warning sign with a red border and a black silhouette of a pedestrian, with a rectangular sign below it that says "Patrol". The road is paved and has yellow double lines. On the right, there is a dense line of trees with vibrant autumn foliage in shades of red, orange, and yellow. In the background, rolling green hills are visible under a cloudy sky. Several cars are driving on the road.

# Stemming the Tide.... Changing driver behaviours in Aberfeldy, 2018

“Pop-up” characters – operating plan and risk assessment

# Risk Assessment Overview

- The plan to deploy pop-ups is part of a wider initiative to calm traffic in Aberfeldy. The proposed measures have been agreed amongst a steering group comprising Community representatives, Community Council Representatives, Councillors, the Police and PKC officers from Community Safety and Traffic and Networks teams.
- This builds on deployment in other jurisdictions. The steering group are not aware of any instances of hazards arising from their deployment elsewhere. Direct contact has been had with Dundee Police, who use the pop-up policemen.
- Site risk assessments have been made for Aberfeldy with a view to only using sites that are acceptable in the light of identified risks.
- This file documents the sites assessed so far and deemed viable. Any new sites would be similarly assessed and added. Only documented sites should be used.
- The risks of deployment are considered to be less significant than not addressing the speeding problem
- This file is derived from an earlier file recording the initial screening etc. It is intended for operational use. For further background refer to the original

# Deploying “Pop-ups” must not generate new risks...

- Pop-up characters are intended to be noticed and provoke driver reflection on their speed – to self motivate for change.
- Placement must not result in adverse reactions/outcomes
- Key Risks considered were:
  - hazards to pavement users by the pop-up characters reducing the space available to pass safely
  - driver over reaction resulting in excessive braking
  - risk of pop-up being blown into pedestrians or moving vehicles
    - all pop-ups will be chained to something fixed, to significantly reduce this risk

# Other Considerations

- Permissions

- Land-owners

- Sites where being off pavement onto greenspace or other adjacent property will not be used until use has been approved by landowners, if at all possible. Those not yet to be used are indicated herein. Working on the access permission rests with Pat Spicer

- PKC Bins / PKC Street Lighting: during the assessment process it was suggested that permission might be needed in respect of fixing to lamp-posts and other street furniture. While this has been requested no replies have been received. We will avoid obstructing access to bins until such time as this has been clarified, but proceed with deployment using lamp-posts until advised otherwise.

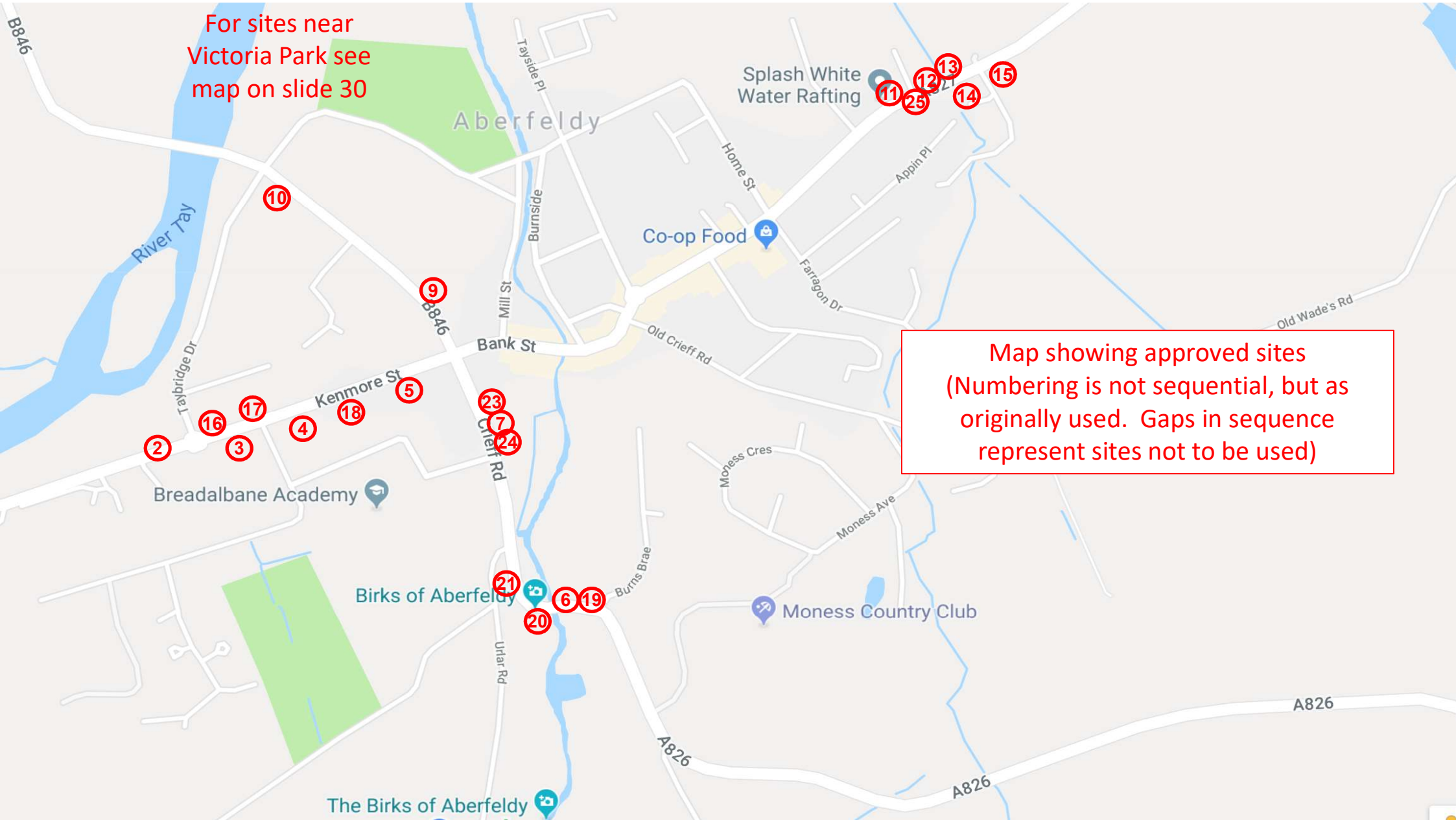
# Criteria for rating sites

- Visibility: sites should have good visibility for drivers so that there is time to react, not a surprise coming into view
- Space – at least 1.2m of un-obstructed footpath width must remain between the pop-up and the pavement edge (in site assessments Pavement Edge to Post measurement abbreviated as : PEP. Space behind the post (to a wall for instance) SBP). Where there is a wall involved ... WPE : Wall to pavement edge.
- Proximity to school or nursery in respect of the kiddie-pop-ups.
- Proximity to the known bad speeding areas for the policeman
- Sites where the pop-up kids could still be usefully deployed, but off the footpath, particularly favoured, though permissions may be needed

# Basic Deployment Plan

- All characters will only be deployed during the day time. Risks will be re-assessed in the winter months and we may adopt a daylight only policy
- Each member of the deployment team will assess whether the wind in the morning and the forecast for the day is consistent with safe deployment.
- All members of the deployment team will have a key that will fit all padlocks; this will facilitate independent deployment according to rota, as no handovers will be required
- All characters will be chained/padlocked in place; one piece of chain and one padlock for the kiddies, two pairs of short chains and two padlocks for each “Jim”
- For each initial deployment the free pavement space should be checked; it must be 1.2m or more
- In the morning, as early as possible, the characters will be taken from the store and deployed to one of the approved sites. While there will probably be a general plan, each member of the team will be able to choose based on personal assessment on the day. In the evening, the character will be recovered to the store.

For sites near  
Victoria Park see  
map on slide 30



Map showing approved sites  
(Numbering is not sequential, but as  
originally used. Gaps in sequence  
represent sites not to be used)

# Site 2

- Lamp post outside Dunolly House, Kenmore Road
- High visibility as drivers enter and leave Aberfeldy
- Path quite wide – significantly wider than site 1
- Suitable for pop-up “kids”
- Certainly suitable for “Jim” – dimensions – PEP = 2.74 m, SBP 0.28 m
- Back 2 Back “Jim”s could be very good
- Preferred western edge site, as pavement at site 1 too narrow





# Site 3

- Lamp post on South Side of Kenmore Street, opposite Fernbank House and adjacent to PKC rubbish bin (possible problem)
- High visibility as drivers enter Aberfeldy
- Just suitable for pop-up “kid” on West side, so long as tight against wall, or two “Jims”
- Dimensions – PEP = 1.48 m, SBP 0.36m. Wall TFE Bin 0.52 m, BPE 1.32 m
- 2<sup>nd</sup> Quality site because of bin. Should be reviewed on first operation and a decision taken on further use



# Site 16

- Lamp post on North Side of Kenmore Street, close to the mini roundabout
- Good visibility
- Dimensions – PEP = 2.50 m, SBP 0.48 m
- Back 2 Back “Jim”s could be very good
- Space for kiddie also



# Site 4

- Lamp post on South Side of Kenmore Street, near end of DYLS
- High visibility to drivers westbound, bin provides some screening eastbound
- Possibly suitable for pop-up “kid” or double “Jim”, but kid probably only fully visible for westbound drivers
- Dimensions – PEP = 1.88 m, SBP 0.38 m. W to FEB 0.56 m, BPE 1.67m
- 2<sup>nd</sup> Quality site because of bin. Should be reviewed on first operation and a decision taken on further use



# Site 17

- Lamp post on North Side of Kenmore Street, near Alma Avenue
- Dimensions – PEP = 2.42m, SBP 0.43 m at GL – hedge obstructs higher up
- Suitable for pop-up “kid” – easily enough space & location excellent. Probably not suitable for “Jim” (try and re-assess)



# Site 18

- Lamp post on South Side of Kenmore Street, between Police Station and the end of the Terrace houses
- Dimensions – PEP = 1.9m, SBP 0.55m
- Suitable for pop-up “kid” (if against wall) or double “Jim”
- Visibility may be better than site 4 because of bin near site 4



# Site 5

- Post on South Side of Kenmore Street, outside carpet shop
- Fair visibility to drivers
- Path quite wide
- Possibly suitable for pop-up “kid” standing on the wall, anchored to post. Permission probably needed.
- Dimensions – WEP = 2.3m, wall 0.45 m, PFEW\* 0.58 m
- Awaits permission check



\*PFEW = Pole to Front Edge of Wall

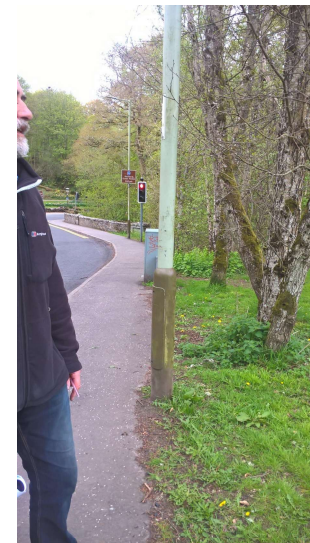
# Site 6

- Just South of bridge over the Birks
- Good visibility to drivers heading North
- Path quite wide, with space off path as well (permission?)
- Suitable for double “Jim”s. Suitable for “kiddie” if set back far enough to leave required 1.2m of unobstructed pavement
- Dimensions – PEP = 1.54 m



# Site 19

- A bit further South of bridge over the Birks than 6
- Good visibility to drivers heading North
- Path quite wide, with even more space off path as well (permission?)
- Suitable for double “Jim”s. Suitable for “kiddie” if set back far enough to leave required 1.2m of unobstructed pavement
- Dimensions – PEP = 1.65 m





# Site 20

- North side of bridge over the Birks
- Good visibility to drivers heading South, good heading north, particularly given likely lowish speed
- Path very wide,
- Suitable for pop-up “kid” or “Jim”
- Dimensions – PEP = 2.70 m SBP 0.36 m



# Site 21

- Just North of bridge over the Birks  
– South of the Stag sculpture
- Good visibility to drivers heading in  
or out of Aberfeldy
- Path too narrow for on pavement  
use, so not suitable for “Jims”
- Suitable for pop-up “kiddie”, if on  
the grass/top of wall and only  
attached to lamp-post
- Dimensions – PEP = 0.92m SBP  
0.28 m



# Site 7

- Outside Townhall on Crieff Road
- Good visibility to drivers heading North
- Path quite wide
- Suitable for pop-up “kid”, but only facing South. Not suitable for “Jim”s
- Dimensions – WPE = 1.67 m, PEP 1.69 m



# Site 23

- Railings with space in front at fire station
- Dimensions not an issue – permission required
- Considered very suitable for pop-up “kid”
- Not available for use until permission sought – in process



# Site 24

- Sign for 20 mph zone lights, outside Town Hall
- Dimensions not an issue – off/end of pavement – but permission required and need to move tree in a barrel – should move anyway as tree obstructs sign
- Considered very suitable for pop-up “kid”
- For the record, lamp post is PEP of 1.56 m, and speed sign post is PEP of 0.81 m
- Awaits permission



# Site 9

- Lamp-post outside the Church on Taybridge Road
- High visibility as drivers come up Taybridge Road and also turning down the road from the traffic lights
- Dimensions – PEP = 1.6m, SBP 0.25m
- Back 2 Back “Jim”s could work, just too narrow for “kiddies”
- Re-assess space on first deployment



# Site 10

- Lamp-post adjacent to putting green on Taybridge Road
- High visibility for drivers approaching Aberfeldy centre up Taybridge Road and, when no parked cars, those driving down the road from the traffic lights
- Dimensions – PEP = 1.75m, space behind on putting green
- Back 2 Back “Jim”s would work. Using the green, possibly with some blocks, may make it feasible for kids
- Permission to be checked out



# Site 11

- Lamp-post outside the Industrial Estate Dunkeld Road (in front of new Architect's office)
- High visibility as drivers enter and leave Aberfeldy on Dunkeld Road, if no parked vehicles outside Splash. During the rafting season this site should not be used as vehicles commonly parked all day long, resulting in late visibility for speeders coming out of town
- Dimensions – PEP = 2.52m, SBP significant. Permission to use space verbally obtained 21/8/18
- Good spot for Back 2 Back “Jim”, out of season. Could also work for kids as we can place them half on the land beside the path, but same issue of visibility.





# Site 12

- Lamp-post outside the Industrial Estate Dunkeld Road (East side of entrance)
- High visibility as drivers enter and leave Aberfeldy on Dunkeld Road, but maybe slightly less for inbound traffic than site 11
- Dimensions – PEP = 2.32 m, some space behind and West – area of chuckies is 0.72m wall to edge
- Spot for Back 2 Back “Jim”s. Could work for kids as we can place them half on the land beside the path. Permission sought and obtained 21/8/18



# Site 25

- Ground off the path adjacent to sign for Estate
- High visibility as drivers leave Aberfeldy on Dunkeld Road, and very close to ABC nursery
- Dimensions not relevant, permission obtained 21/8/18
- Spot for a “kid” as we can place them beside the path.



# Site 13

- Lamp-post with bus stop sign East of the Industrial Estate, on Dunkeld Road
- High visibility as drivers enter and leave Aberfeldy on Dunkeld Road
- Lamp post behind fence:  
Dimensions – FEP = 1.98m
- May be suitable for “Kid”, if hard up to fence. Re-assess on first deployment (1.2m space rule)
- Not suitable for “Jims”



# Site 14

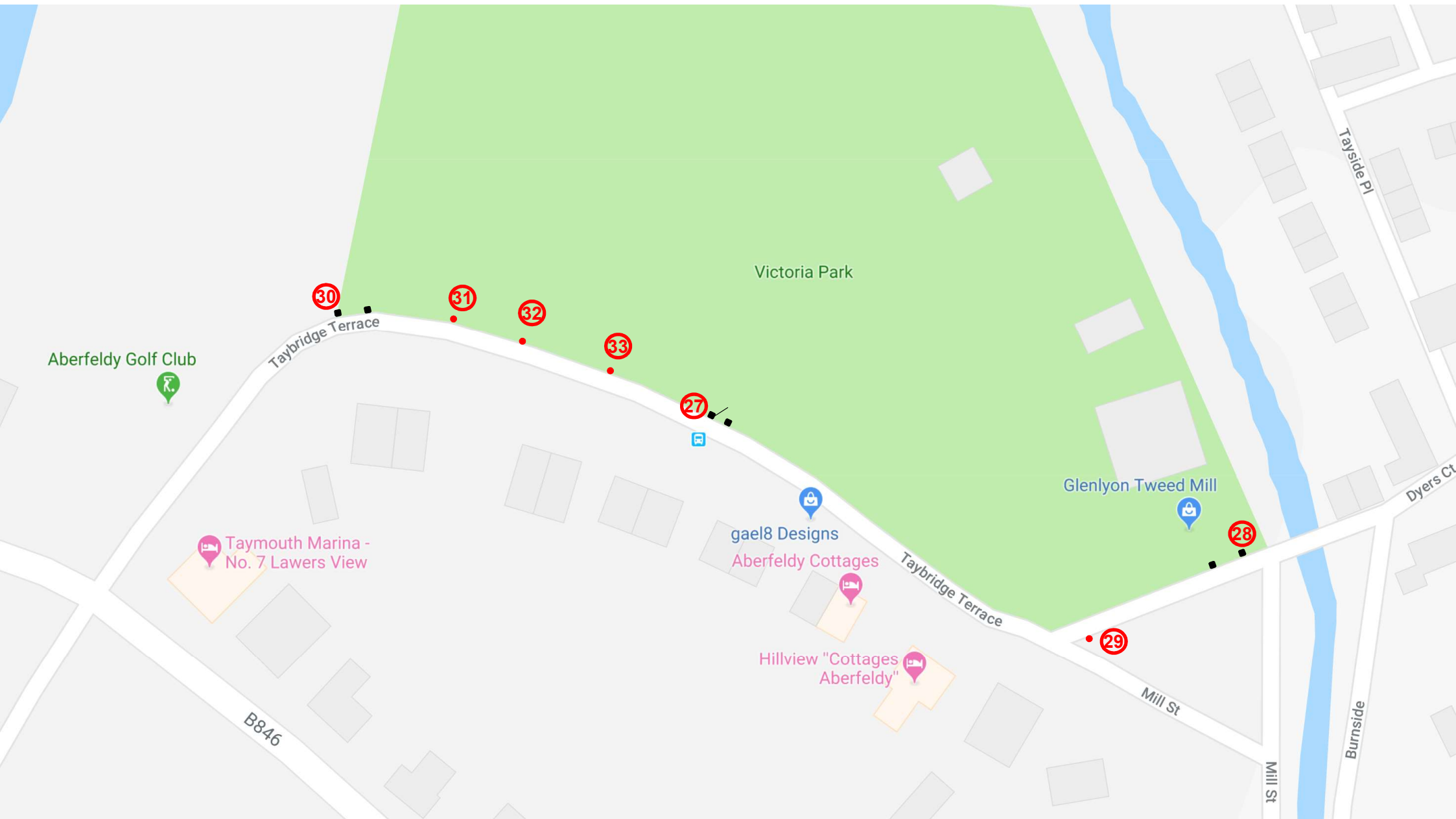
- Bus stop East of the Industrial Estate, on Dunkeld Road, South side of road
- High visibility as drivers enter and leave Aberfeldy on Dunkeld Road
- No footpath as such, so dimensions not relevant. Plenty space adjacent.
- Permission check still required
- Good for Back 2 Back “Jim”s, also viable for kids



# Site 15

- Sign post across road from entrance to Caravan Park on Dunkeld Road, South side of road
- High visibility as drivers enter and leave Aberfeldy on Dunkeld Road
- No footpath as such, so dimensions not relevant. Plenty space adjacent
- Permission check still required
- Probably good for Back 2 Back “Jim”s, also viable for kids





Aberfeldy Golf Club

Taybridge Terrace

Victoria Park

Taymouth Marina -  
No. 7 Lawers View

gael8 Designs  
Aberfeldy Cottages

Hillview "Cottages  
Aberfeldy"

Glenlyon Tweed Mill

B846

Taybridge Terrace

Mill St

Mill St

Burnside

Tayside Pl

Dyers Ct

30

31

32

33

27

28

29

# Site 27

- Taybridge Terrace
- Western Gate post of middle entrance to Victoria Park
- High visibility as drivers go up or down Taybridge Terrace, unless parked cars
- PEP = 1.8m, just 1.2m spare
- Excellent site for kiddies



# Site 28

- Taybridge Terrace
- Eastern Gate post of main entrance to Victoria Park (by the Vet/Bowling/Tennis club access roads)
- High visibility as drivers go up or down Taybridge Terrace, unless parked cars
- PEP = 1.8m, just 1.2m spare
- Excellent site for kiddies





# Site 29

- Taybridge Terrace
- Lamp post at corner of Triangle
- High visibility as drivers go up or down Taybridge Terrace, unless parked cars, but should still be visible along pavement from afar off
- PEP = 2.1m
- Excellent site for kiddies



# Site 30

- Taybridge Terrace
- Western (hinged) gate post at entrance to park nearest to Golf Course
- High visibility as drivers go up or down Taybridge Terrace
- PEP = 3.3m
- Excellent site for kiddies



# Site 31

- Taybridge Terrace
- Lamp post at Manse corner (just up hill from 30)
- High visibility as drivers go up or down Taybridge Terrace and will not be obscured due DYs (some hope in Aberfeldy....)
- PEP = 2.0 m
- Excellent site for kiddies, could be used for Jims



# Site 32

- Taybridge Terrace
- Lamp post one east of that at Manse corner (site 31)
- High visibility as drivers go up or down Taybridge Terrace and should not be obscured due DYs (some hope in Aberfeldy....)
- PEP = 1.9 m
- Excellent site for kiddies, could be used for Jims

# Site 33

- Taybridge Terrace
- Lamp post two east of that at Manse corner (site 31)
- High visibility as drivers go up or down Taybridge Terrace might be obscured due parked cars
- PEP = 1.9 m
- Excellent site for kiddies, could be used for Jims





Townhouse Aberfeldy

akfast

Mews

on

Chillies

Station House

Co-op Food - Petrol  
Aberfeldy New

TM

ATM

Home St

Breadalbane Terrace

Appin Pl

Appin Pl

Appin Pl

Rannoch Rd

Farragon D

34

# Site 34

- Lamp post opposite the branch off Appin Place, on the straight stretch
- High visibility as drivers go up or down Appin Place unlikely to be obscured due parked cars
- On grass verge so no pedestrian access issue
- Excellent site for Jims. Not suitable for kiddies due slope.



# Site 38

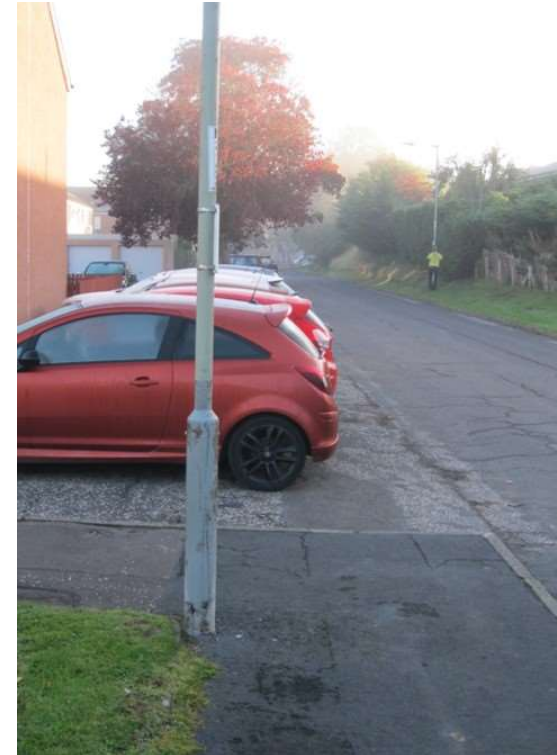
- Lamp post at far end of Appin Place, adjacent to grassy area
- High visibility as drivers go East on Appin Place, unlikely to be obscured due parked cars
- On grass verge so no pedestrian access issue
- Probably not a site for Jims, but suitable for kiddies.



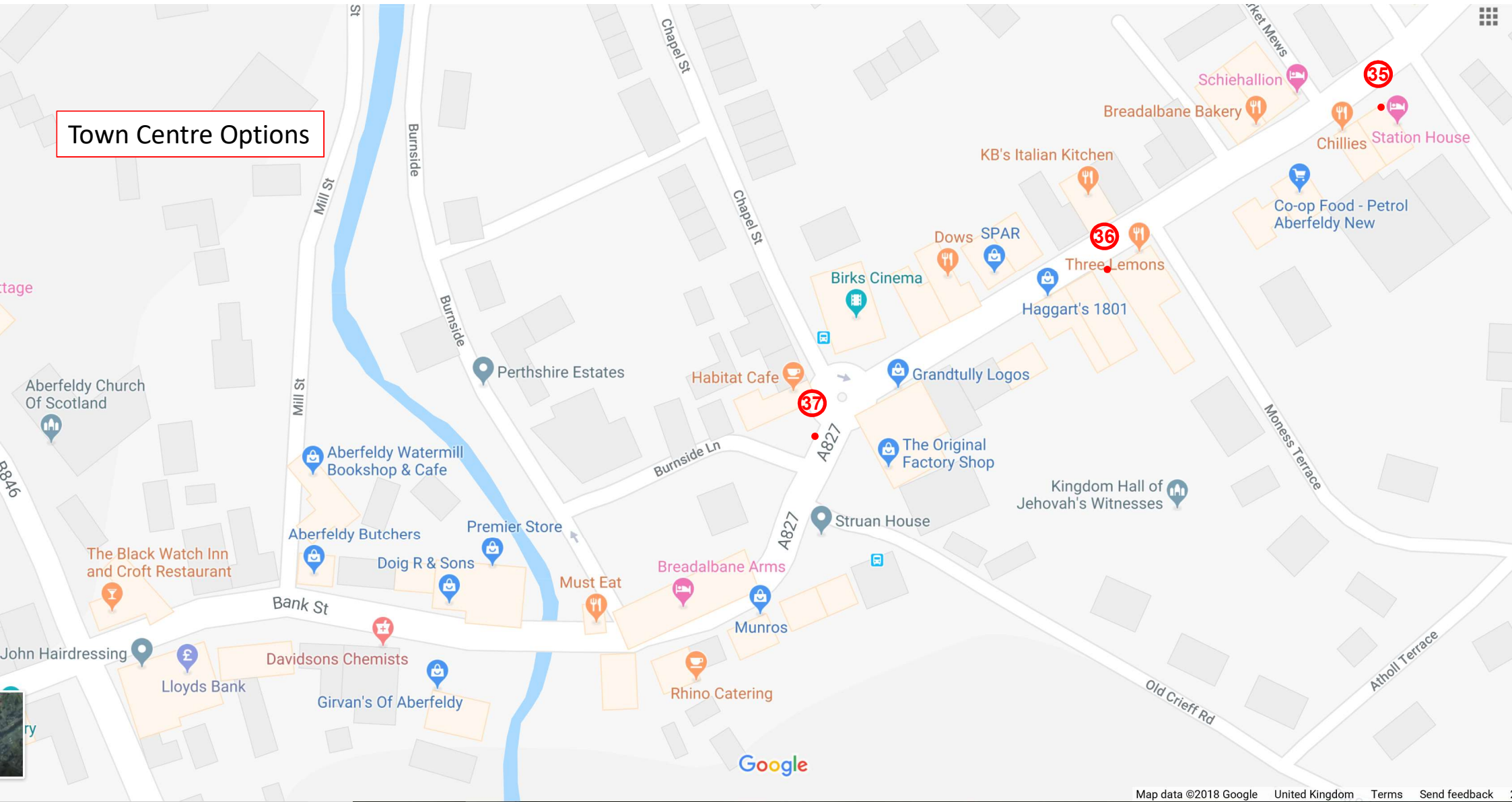


# Site 39

- Lamp-post towards west end of Appin Place, adjacent to grassy area
- Fair visibility as drivers go either direction on Appin Place. Some possibility to be obscured due to parked cars
- On grass verge so no significant pedestrian access issue, but PEP = 1.80m anyway
- Probably not a site for Jims, but suitable for kiddies.



# Town Centre Options



# Site 35

- Lamp post adjacent to Station House
- High visibility as drivers go up or down Dunkeld Street unlikely to be obscured due parked cars
- Wide pavement, though close to curved kerb for access point. PERoad = 2.60m, SBP 0.63m
- Excellent site for Jims. Could be suitable for kiddies.



# Site 36

- 20 mph road sign post adjacent to Takeway
- High visibility as drivers go up or down Dunkeld Street unlikely to be obscured due parked cars
- Sufficiently wide pavement, PEP = 1.60m, SBP 0.53m
- Excellent site for Jims. Could be suitable for kiddies.



# Site 37

- Road sign post for roundabout outside Habitat Cafe, on edge of square
- High visibility as drivers go up or down Dunkeld Street unlikely to be obscured due parked cars
- On outside of pavement so not a space problem
- Possible site for Jims. However, because of bend decided not suitable





# Site 40

- Lamp post on West side of Taybridge Drive
- High visibility as drivers go up or down Taybridge Drive might be obscured due parked cars or buses at high season
- Wide pavement, PEP = 1.70m, SBP 0.45m
- Excellent site for Jims. Could be suitable for kiddies.

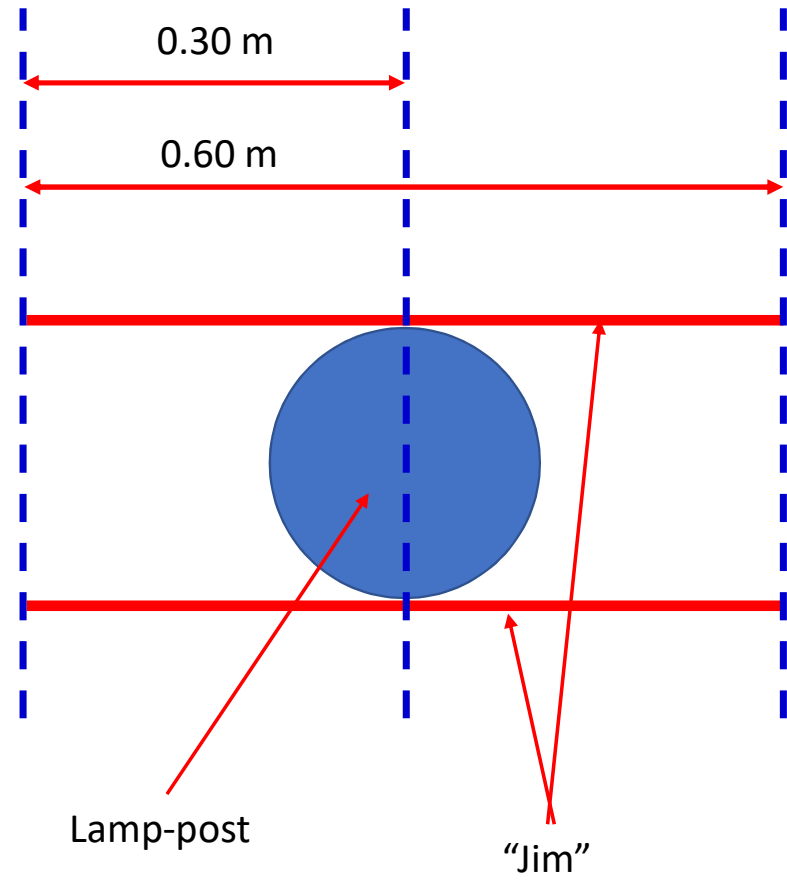


# Site 41

- Lamp post on West side of Taybridge Drive
- High visibility as drivers go up or down Taybridge Drive might be obscured due parked cars or buses at high season
- Wide pavement, PEP = 1.94m, SBP 0.30m
- Excellent site for Jims. Could be suitable for kiddies.







1070 mm



558 mm

Kiddie with lollipop  
Mum with Pram



1155 mm

650 mm

655mm wide x 964mm high (including the base)  
653mm wide x 1036mm high (including the base)

Weights: Variable depending on water in base, but ~ 25-35 lbs (c. 11-16 kg)