



Speeding in Aberfeldy, 2018

Results of Traffic Surveys Conducted in December 2018 – January 2019
In the 20 mph zone in the Town Centre

Notes

Surveys were conducted in a single location – the only place in the zone viable due to parking and availability of a site (pole not exceeding maximum diameter of bracket). Surveys conducted for a week on three occasions. First occasion data file was corrupt and no data could be recovered. 6 full days of data obtained from each of 2 subsequent surveys. The location is at the heart of a clearly posted, 20 mph speed limit zone. Only full days of data have been analysed.

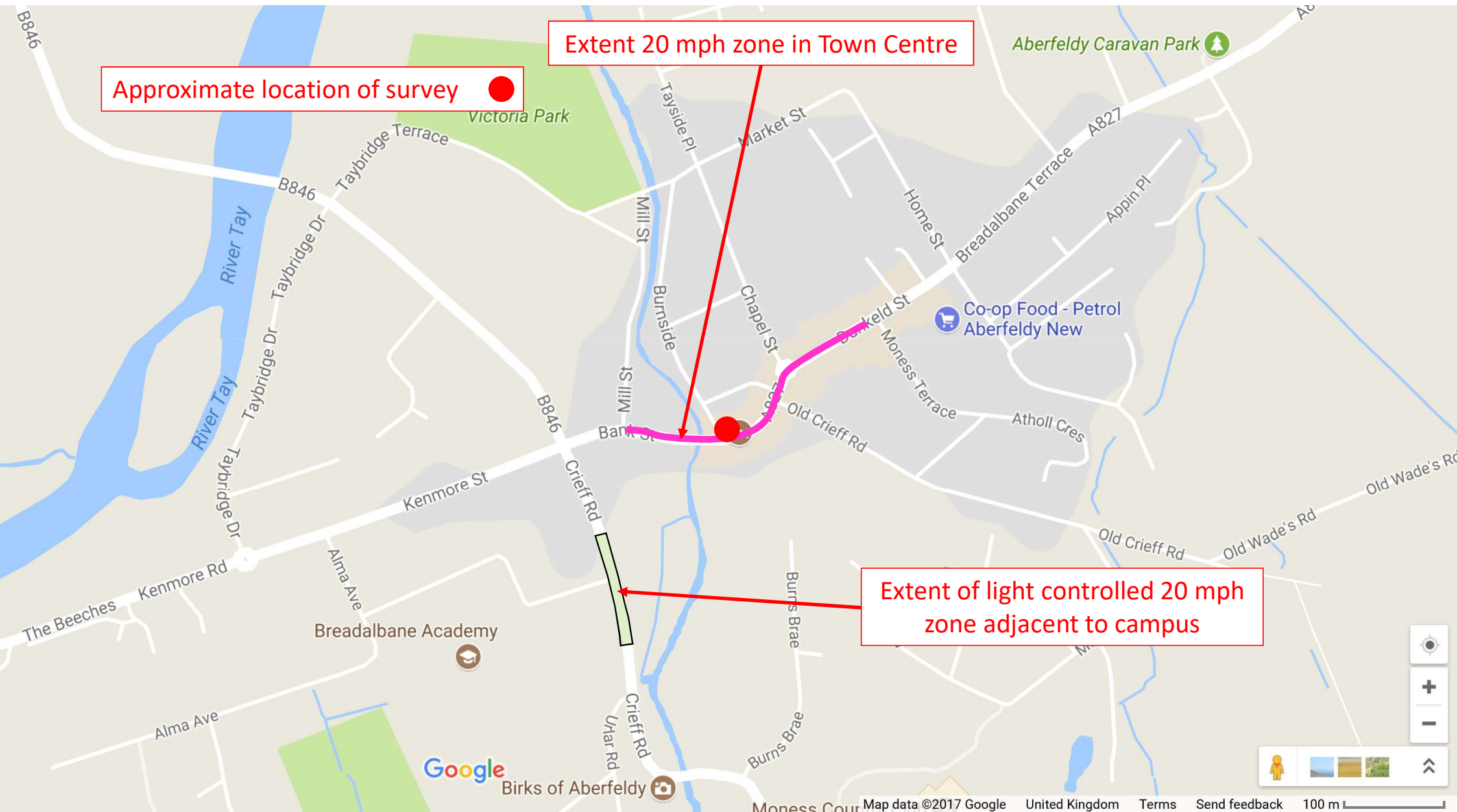
The two surveys produced very consistent results. No significant difference between the regular week data from January and the festive data across Christmas. Roughly 30% speeding, less than 1% exceeding 30 mph and no instances of >40 mph. The only concern is this does not reflect attitudes to the 20 mph limit, more the congested nature of the location which restricts what is possible.....

Interesting that there is again a distinct bias in the directionality of speeding – those heading West out of the square distinctly worse than those heading East. I suggest that is due to the visibility going East being less good (the corner of the Hotel obscures the Square) whereas the Westbound traffic would be on the bridge with a clear view of Bank Street and more space.

Approximate location of survey ●

Extent 20 mph zone in Town Centre

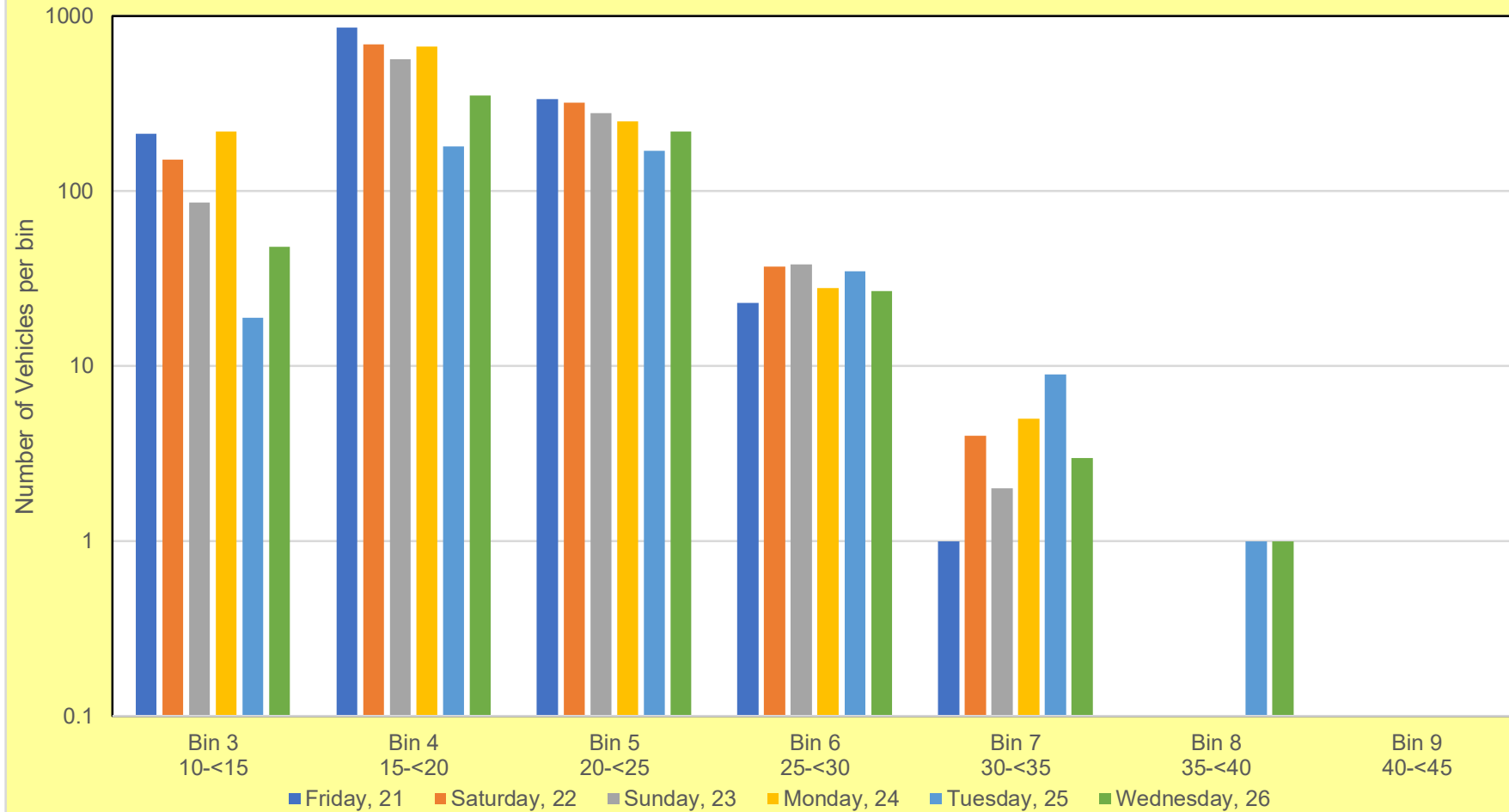
Extent of light controlled 20 mph zone adjacent to campus



Google

Birks of Aberfeldy

20 mph Zone - all data (both directions) December 2018



735

3334

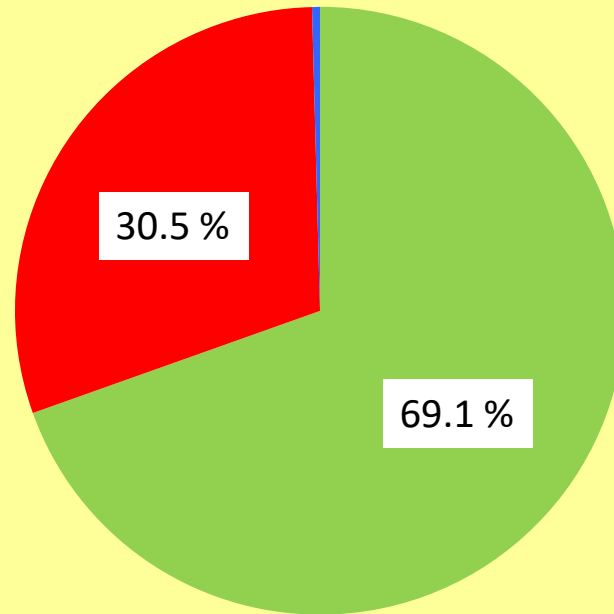
1576

188

24

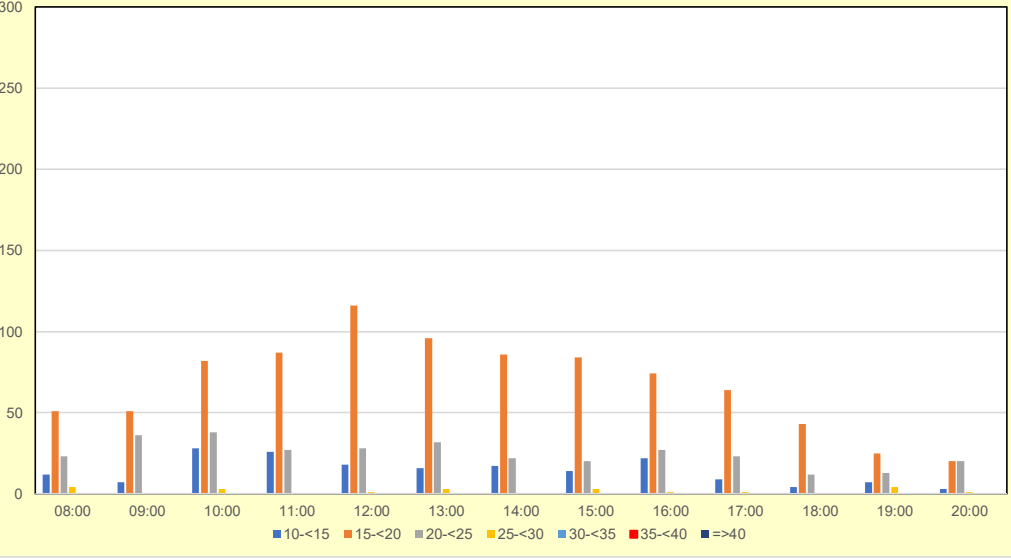
Total vehicles in each bin across 6 days

20 mph Zone



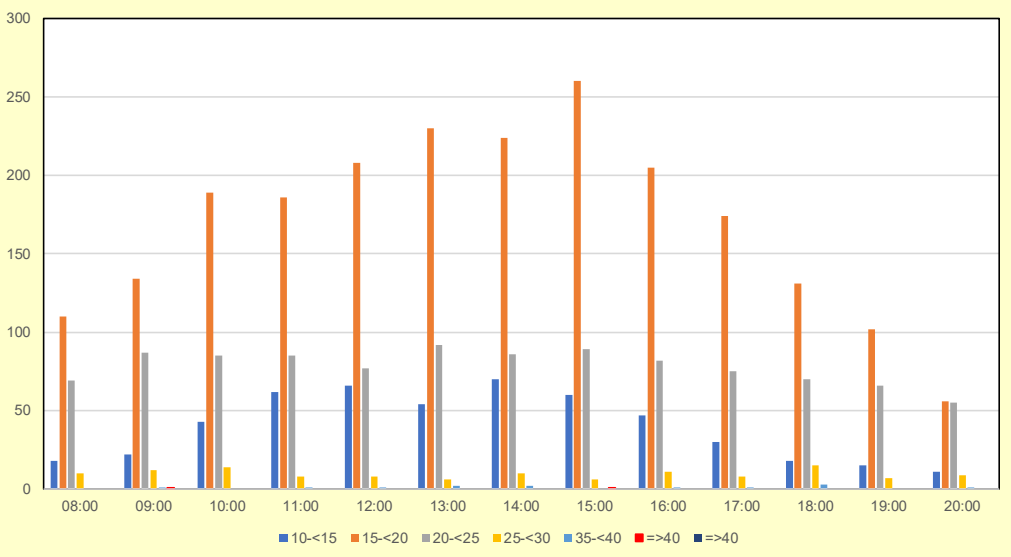
■ <20 mph ■ >20, <30 mph ■ >30, <40 mph

20 mph Zone - Eastbound



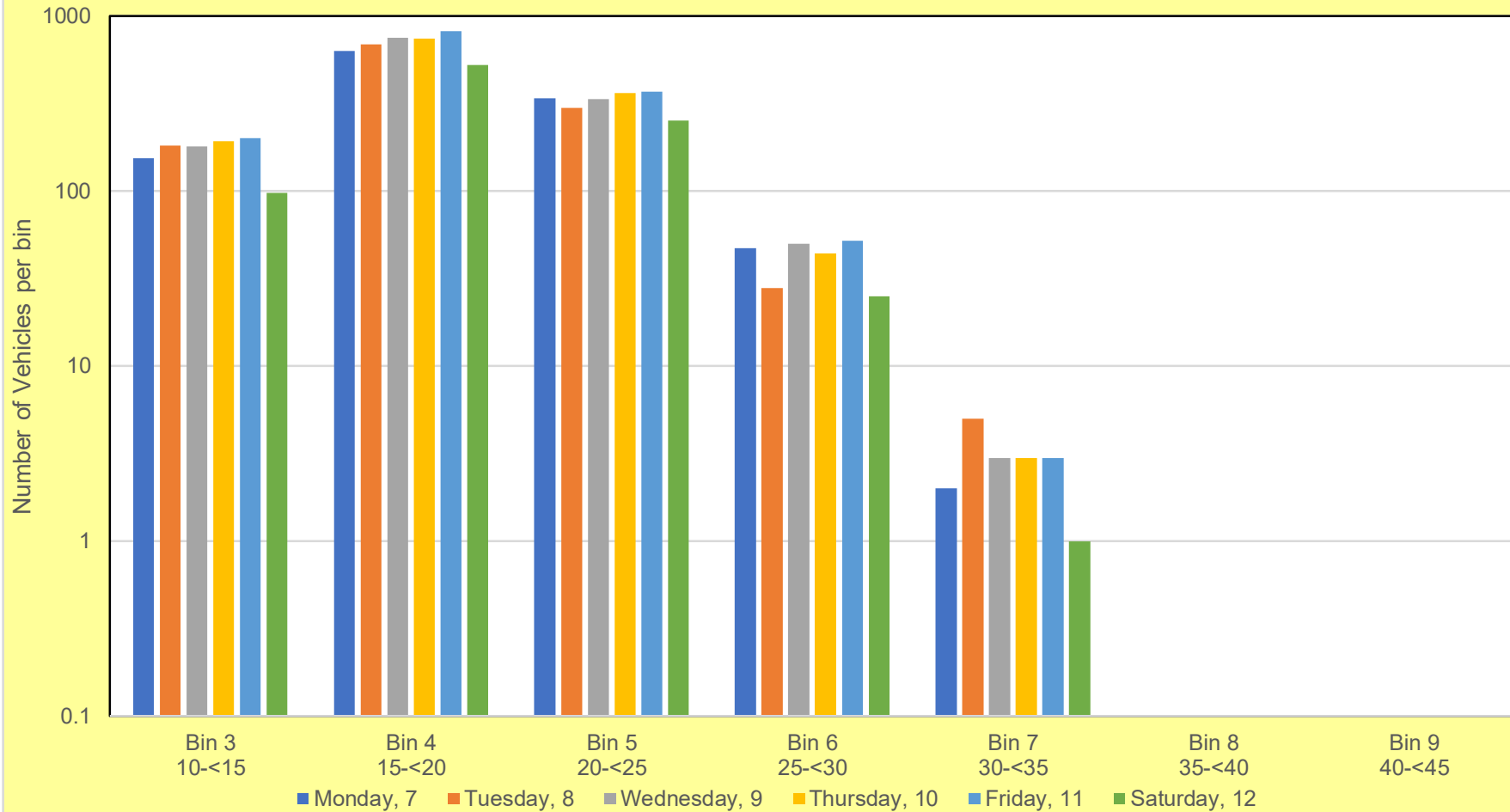
TRAFFIC
INBOUND TO
SQUARE

20 mph Zone - Westbound



TRAFFIC
OUTBOUND FROM
SQUARE

20 mph Zone - all data (both directions) January 2019



1011

4168

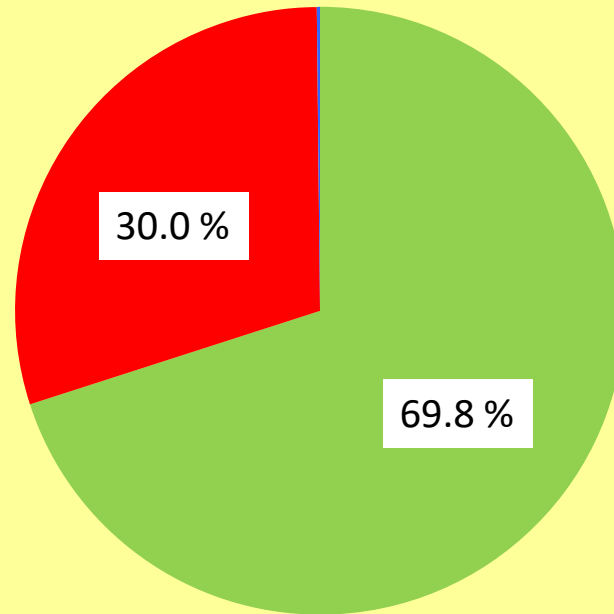
1963

246

17

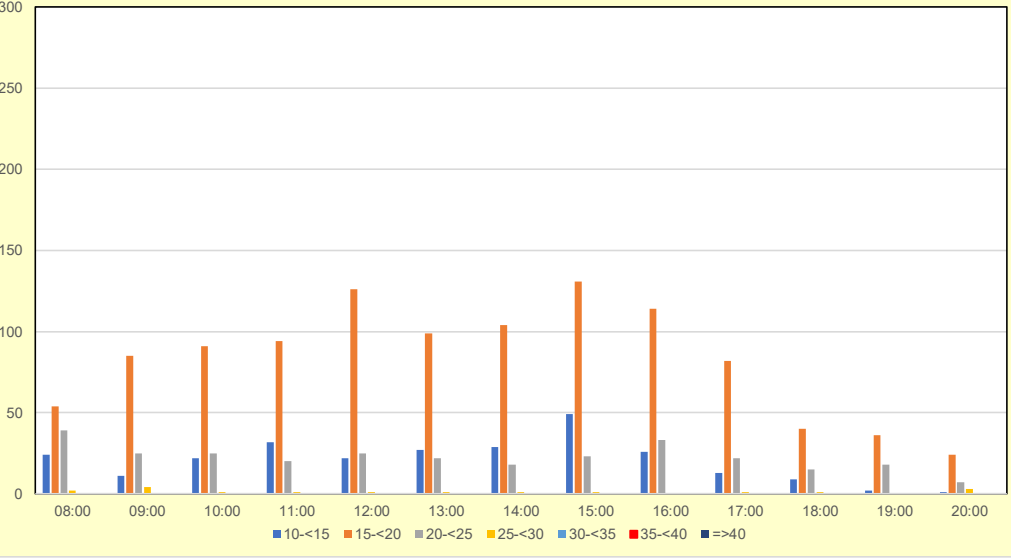
Total vehicles in each bin across 6 days

20 mph Zone



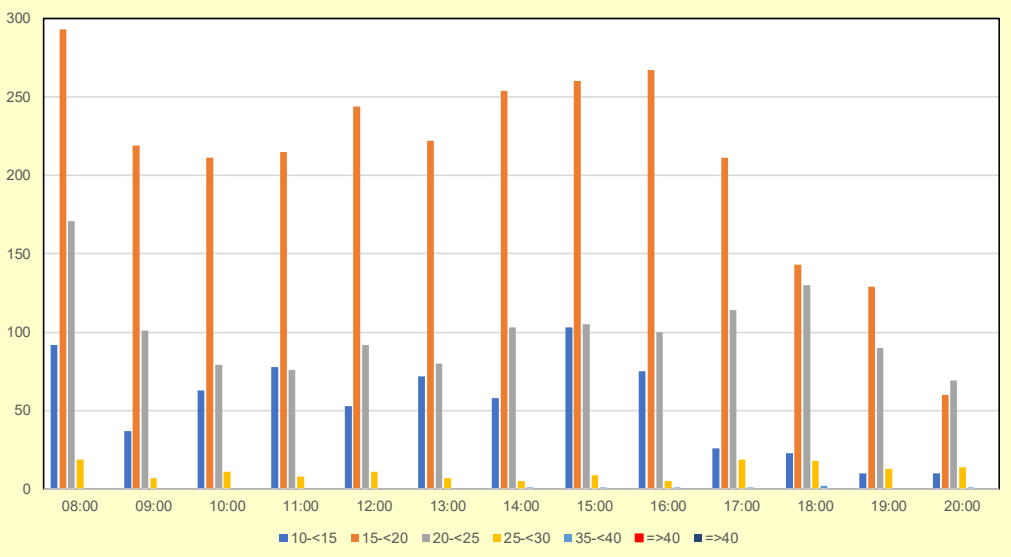
■ <20 mph ■ >20, <30 mph ■ >30, <40 mph

20 mph Zone - Eastbound



TRAFFIC
INBOUND TO
SQUARE

20 mph Zone - Westbound



TRAFFIC
OUTBOUND FROM
SQUARE