



Speeding in Aberfeldy, 2017

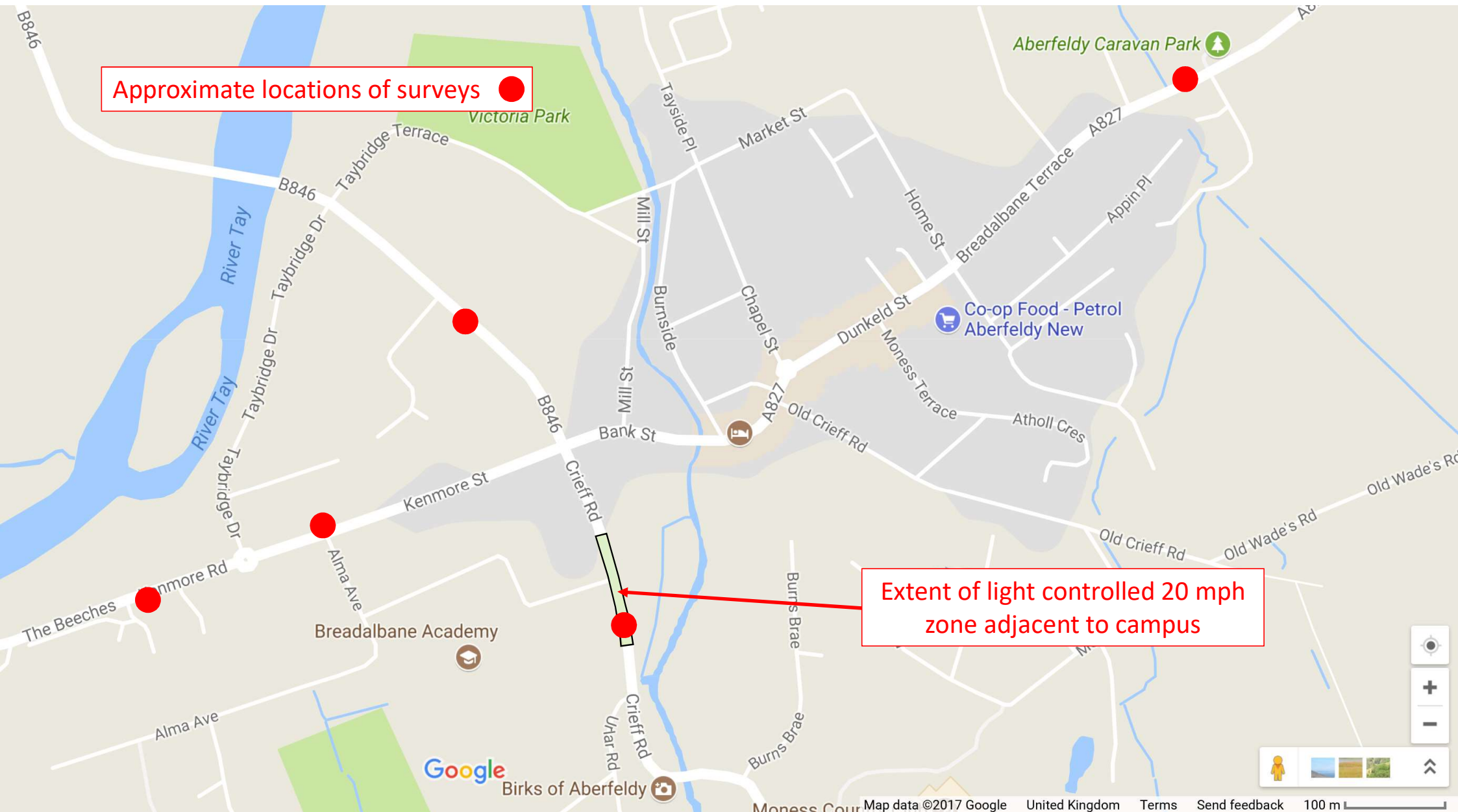
Results of Traffic Surveys Conducted in August and September 2017

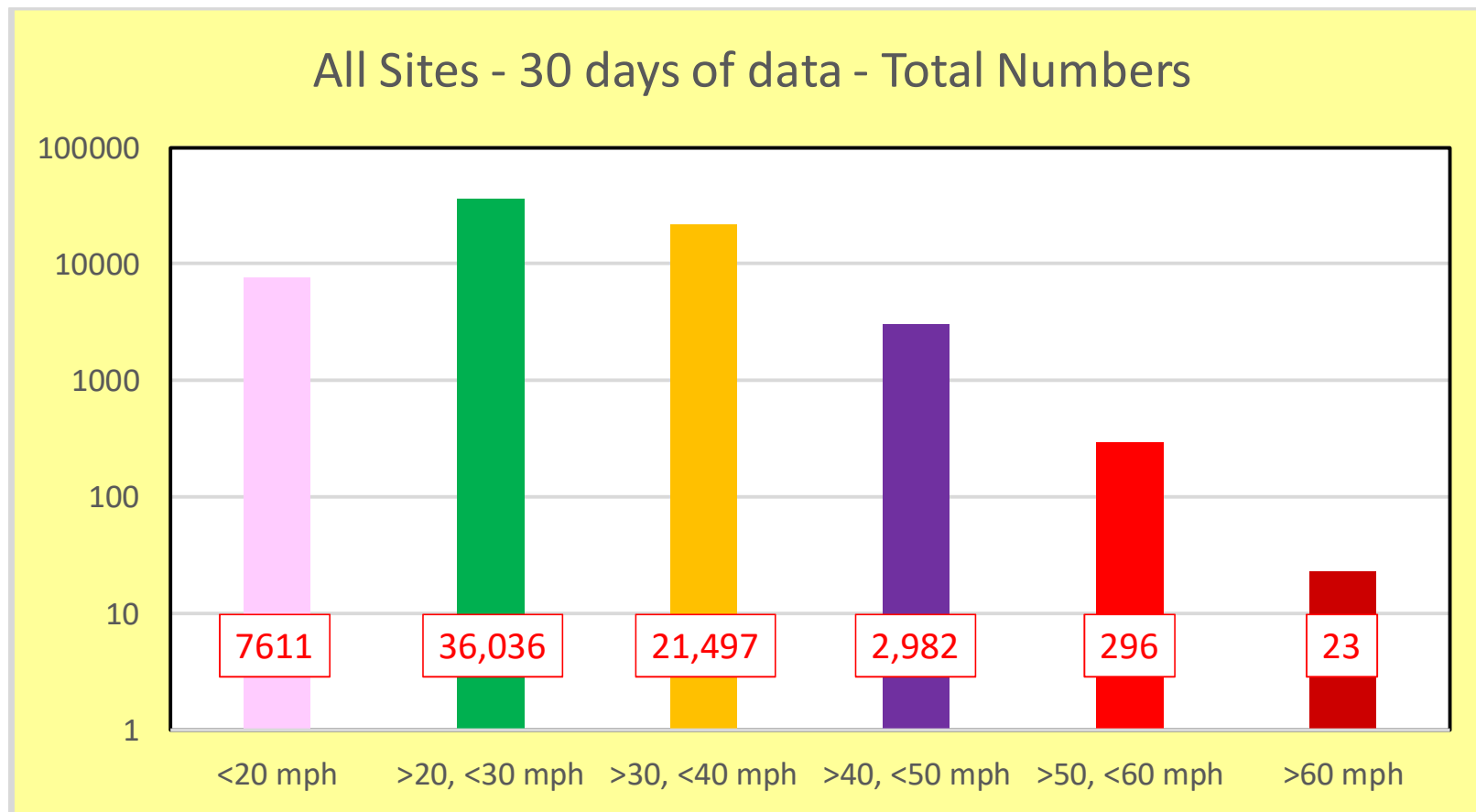
Notes

Surveys were conducted over approximately one week in 5 locations. All locations have a clearly posted, basic, 30 mph speed limit. Only full days of data have been analysed. In comparing total flow numbers, it is important to note that for Crieff Road there were only 5 full days of data, for Taybridge Road 7 days and for the other sites, 6 full days. For this reason, comparisons have been made by computing average daily numbers. Only the speeding data has been analysed so far. Little has been done to look at patterns of speeding through the day, but for Crieff Road, Kenmore Street and Kenmore Road, that have the most flows of school children, the data have been sub-setted for the “School At Risk Hours” – arrival, lunchtime and leaving. Only the Crieff Road data , included below, relate to an actual, flashing light controlled, 20 mph zone.

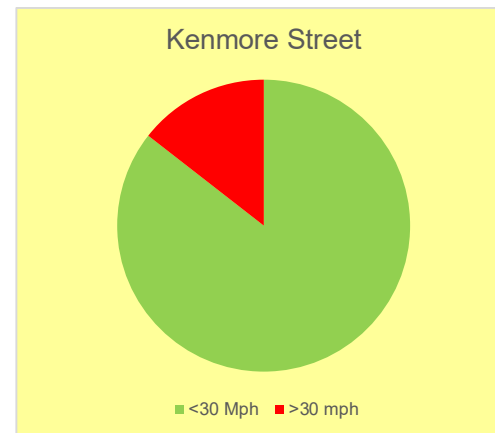
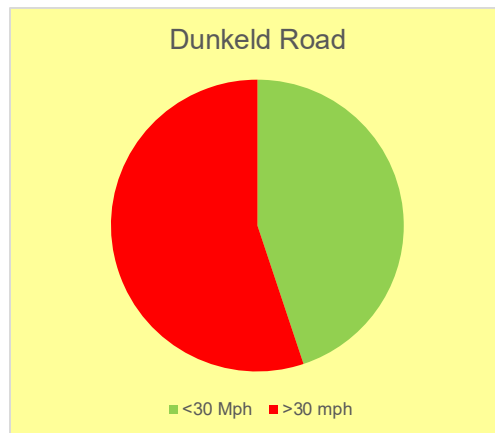
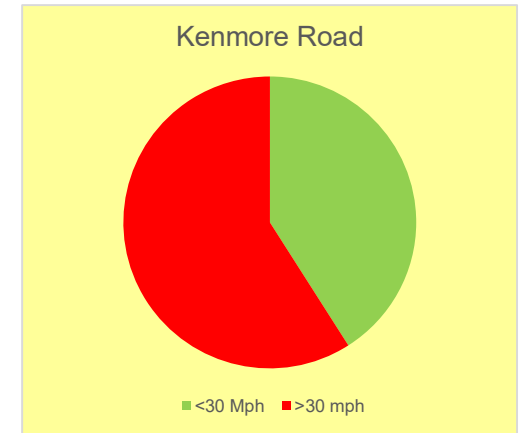
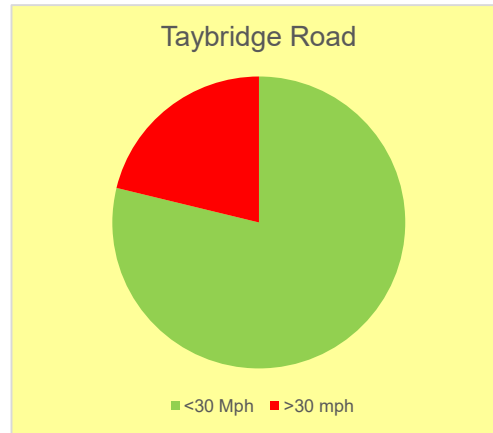
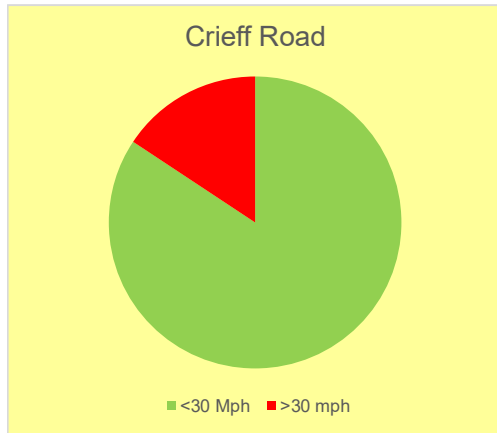
Approximate locations of surveys ●

Extent of light controlled 20 mph zone adjacent to campus

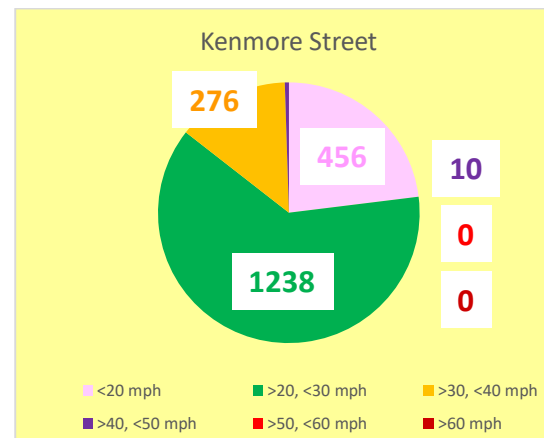
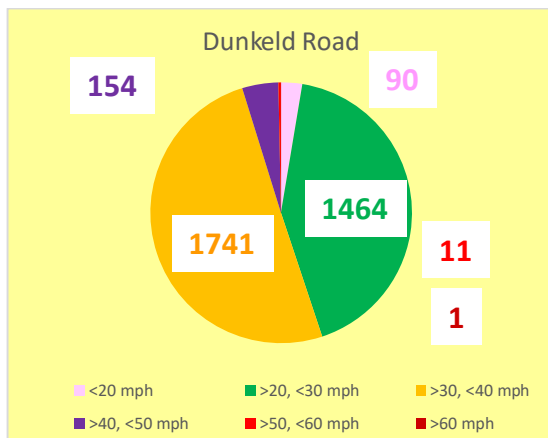
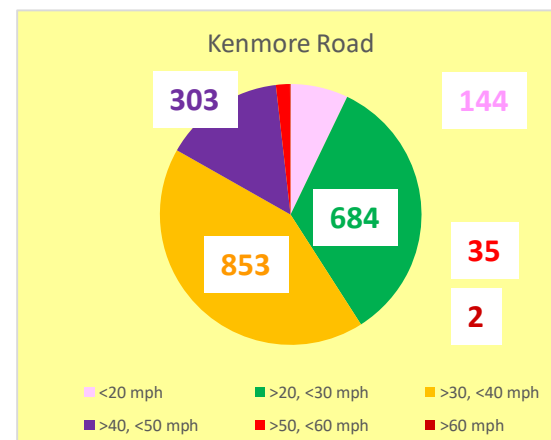
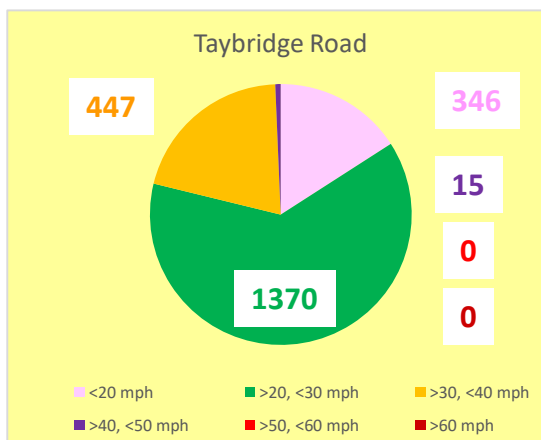
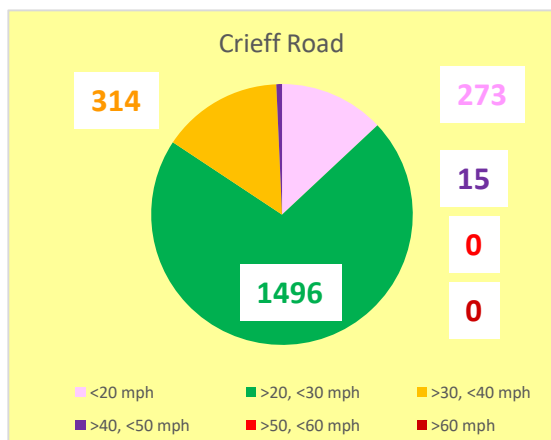




The 30 full days of data have been summed to give an overall impression of the scale of speeding in Aberfeldy. These numbers are presented graphically above. Please note that the Y axis scale is logarithmic to allow clearer representation of the higher speed traffic. Of a total 68,445 vehicle movements, 24,798 exceeded the 30 mph limit (36.2%). That is more than 820 vehicles a day driving illegally on the arterial routes through the town and more than 100 per day at speeds that would probably cost them their licence (>40 mph).

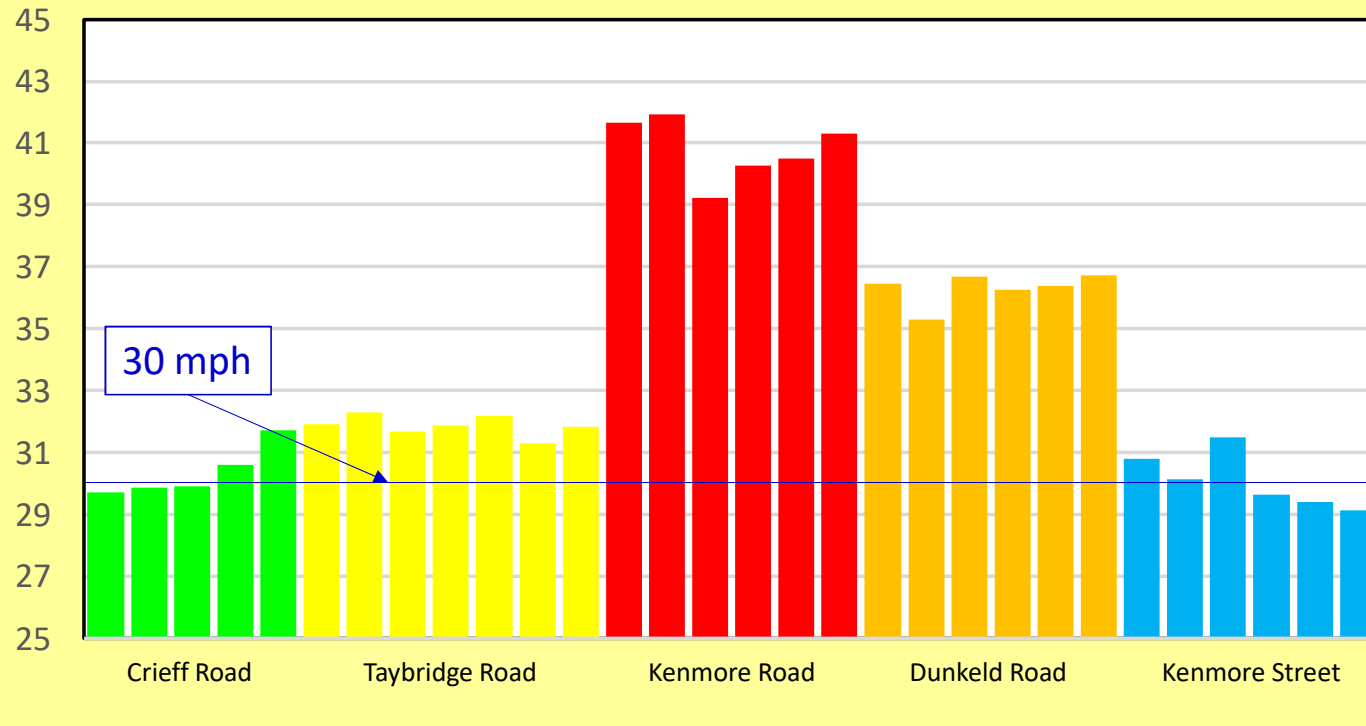


Overview of Results – Ratio of speeding traffic to legal traffic for the five sites



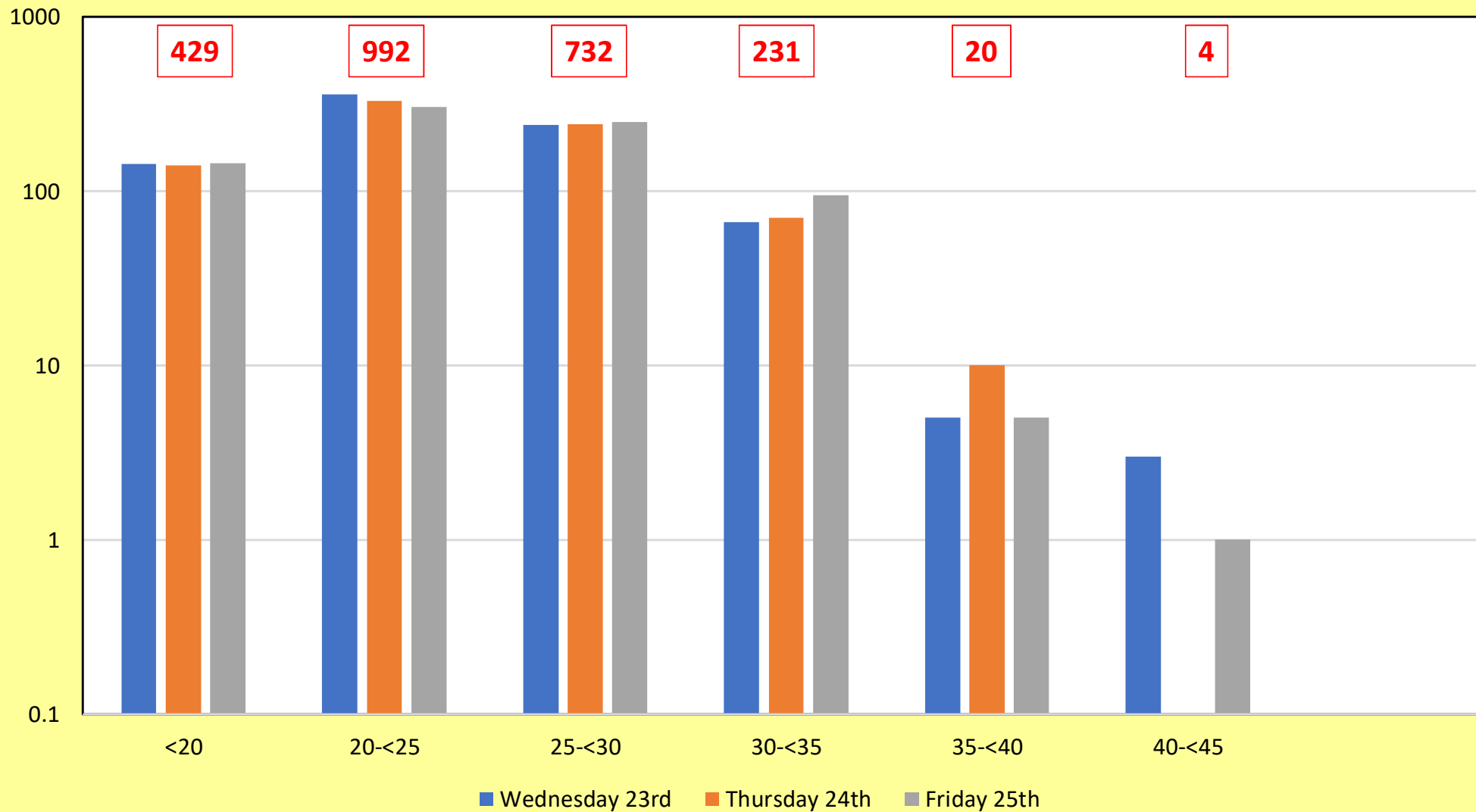
Mean Daily Numbers by speed class, by site

Daily 85th percentile speeds



The 85th percentile speed is often quoted as a single measure representation of the overall speed pattern. The definition is as follows: "The speed at or below which 85% of all vehicles are observed to travel under free flowing conditions, past a nominated point." Put another way, a speed beyond which 15% of all the traffic is moving

Crieff Road: School at risk hours (Arrival, Lunchtime, Leaving)

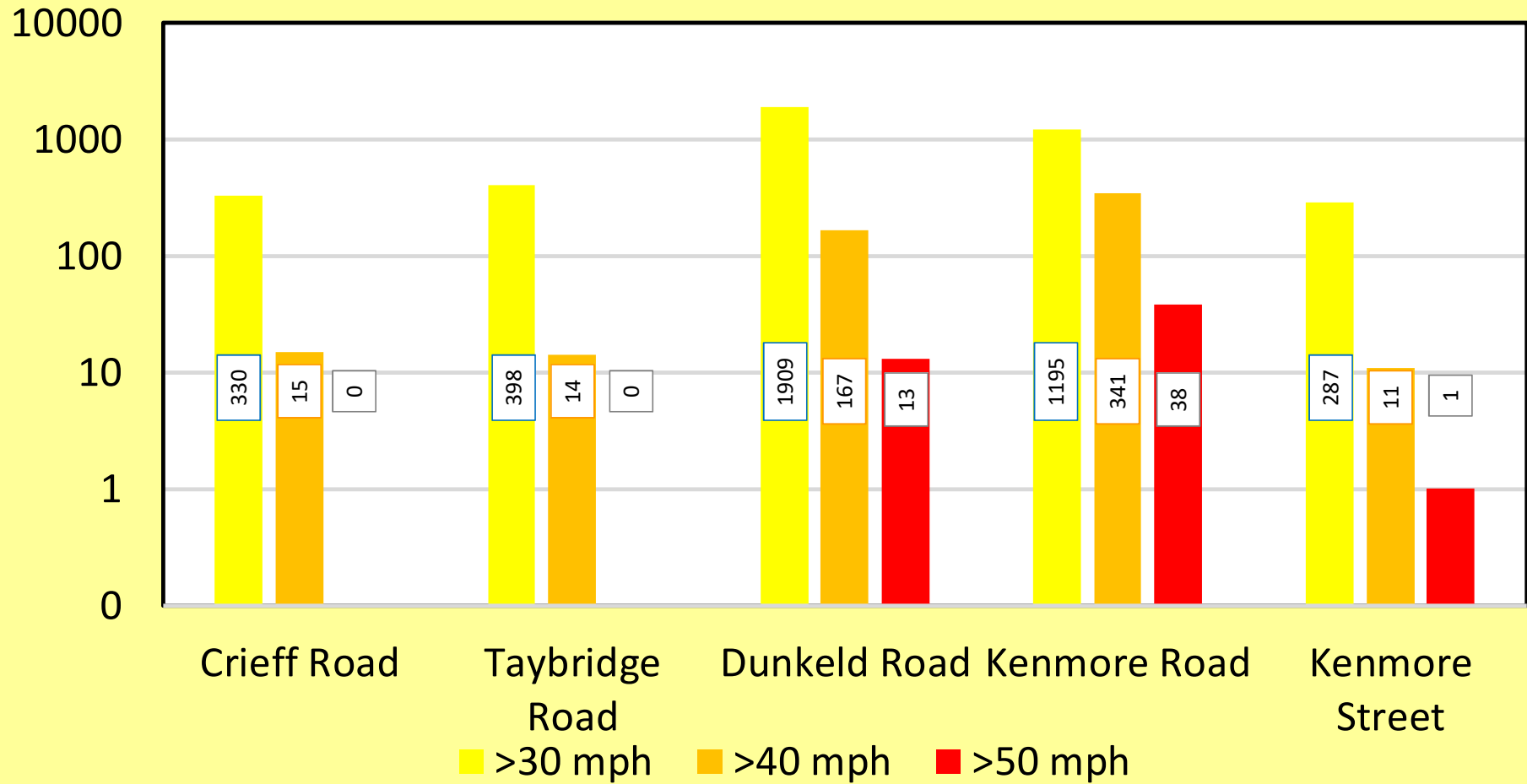


Main Messages

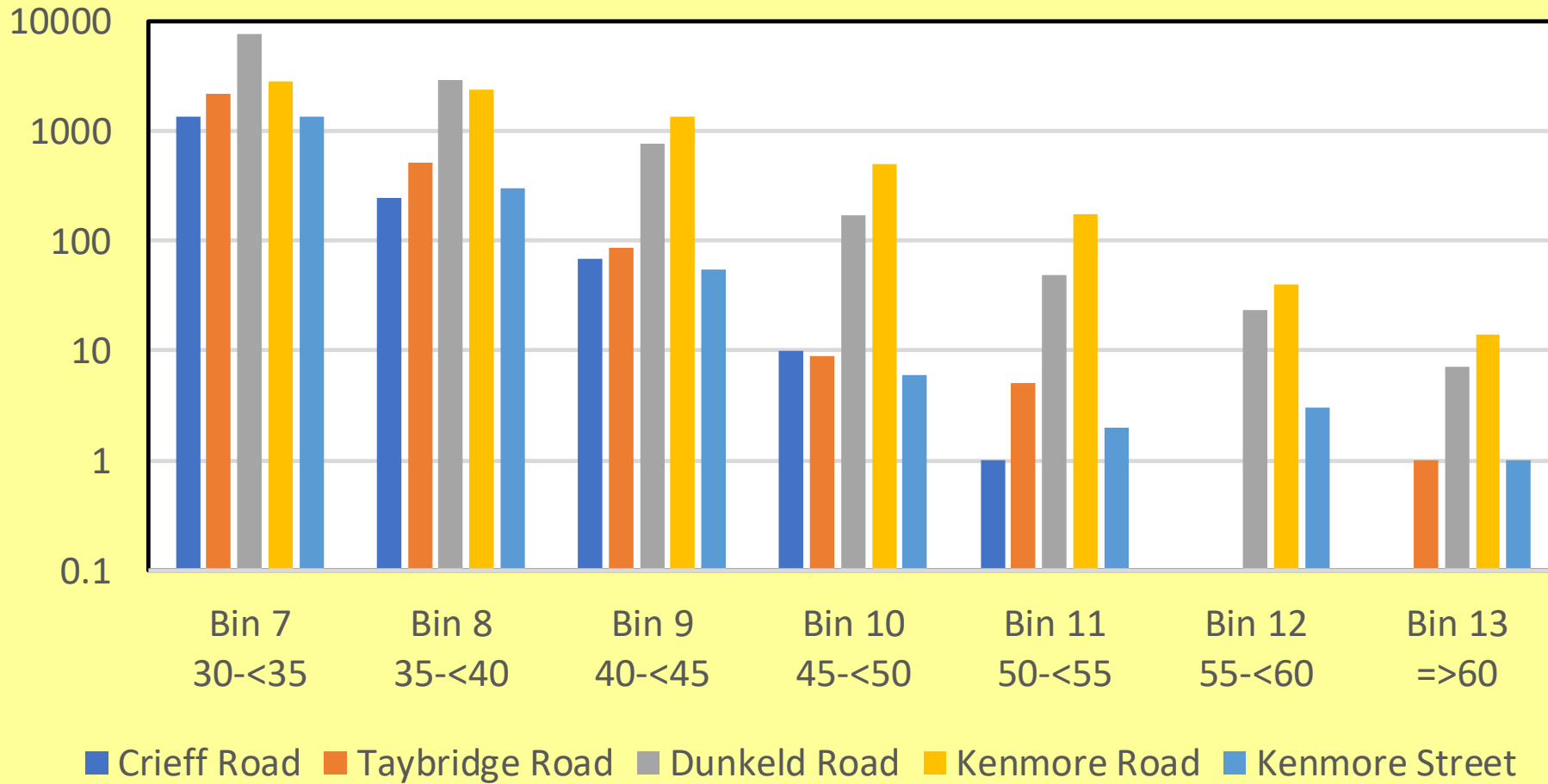
- Common knowledge that there is a “speeding” problem in Aberfeldy
- Getting support for action required proof. Data has been gathered.
- Five points surveyed with a radar recording installation over the last c 6 weeks.
- Locations chosen on the four main arterial routes at locations well inside the 30 mph limit and where safety considerations meant the limit should really be respected (eg school proximity, blind access, the nursery).
- A lot more work could be done on the data gathered, but key messages are clear. Speeding is rampant and needs to be curbed.
- In essence, if detected with the appropriate legal protocols, more than a hundred, potentially licence-losing events would be happening every DAY.
- Our main priority is public safety. The survey on Crieff Road showed that when the 20 mph zone was operating (ie high risk time for children movements), less than 20% of traffic was compliant.
- Early work also shows a problem with numbers of trucks exceeding the limit on Taybridge Road, where access from drives is awkward and blind
- With the case made for action, it is the intention of the Community Council to engage with the relevant folk in PKC Roads and the Police to develop cost-effective solutions to make Aberfeldy a safer place for all its residents and visitors.

Site	Total Nos	% >30 mph	% > 40 mph	Average daily nos > 30mph	Average daily nos > 40mph	30-<35	35-<40	40-<45	45-<50	50-<55	55-<60	=>60
Crieff Road	10500	15.7	0.8	330	15	1326	245	68	10	1	0	0
Taybridge Road	13100	21.3	0.8	398	14	2182	508	85	9	5	0	1
Dunkeld Road	20790	55.1	4.8	1909	167	7564	2890	757	170	48	23	7
Kenmore Road	12150	59.0	16.9	1195	341	2777	2346	1329	493	174	40	14
Kenmore Street	11905	14.5	0.6	287	11	1358	301	55	6	2	3	1

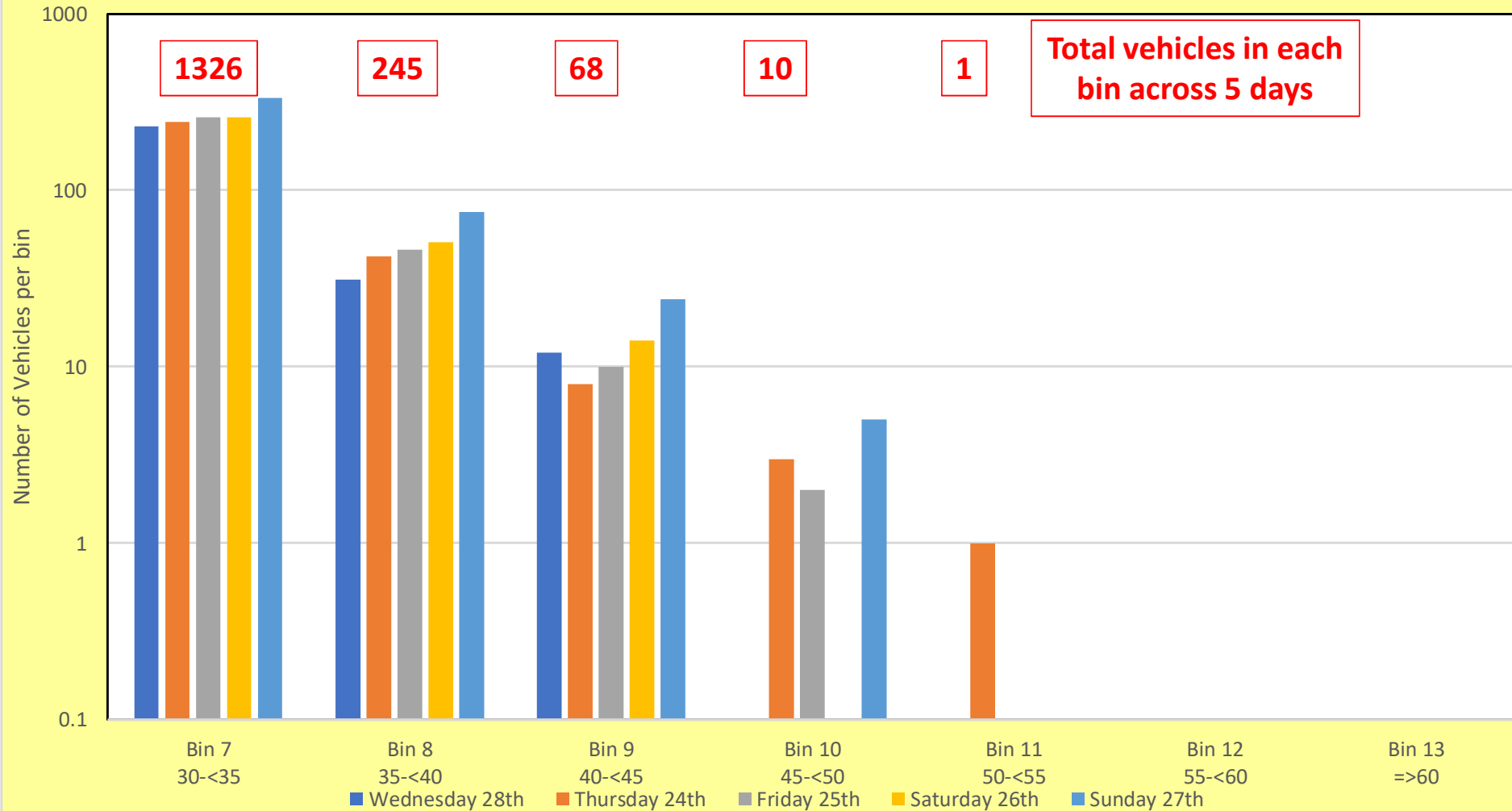
Average Daily Numbers



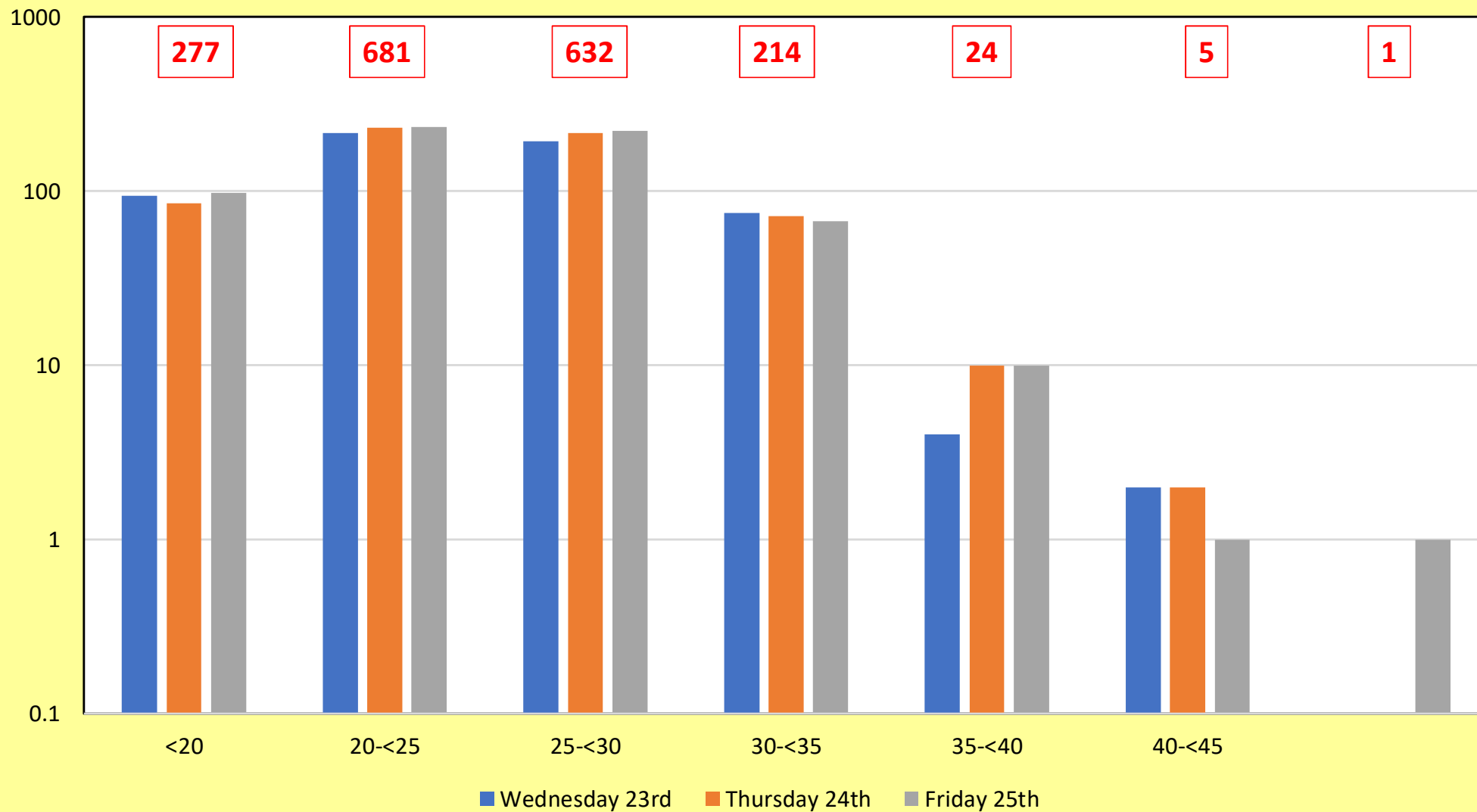
Numbers of Vehicles Exceeding the 30 mph limit



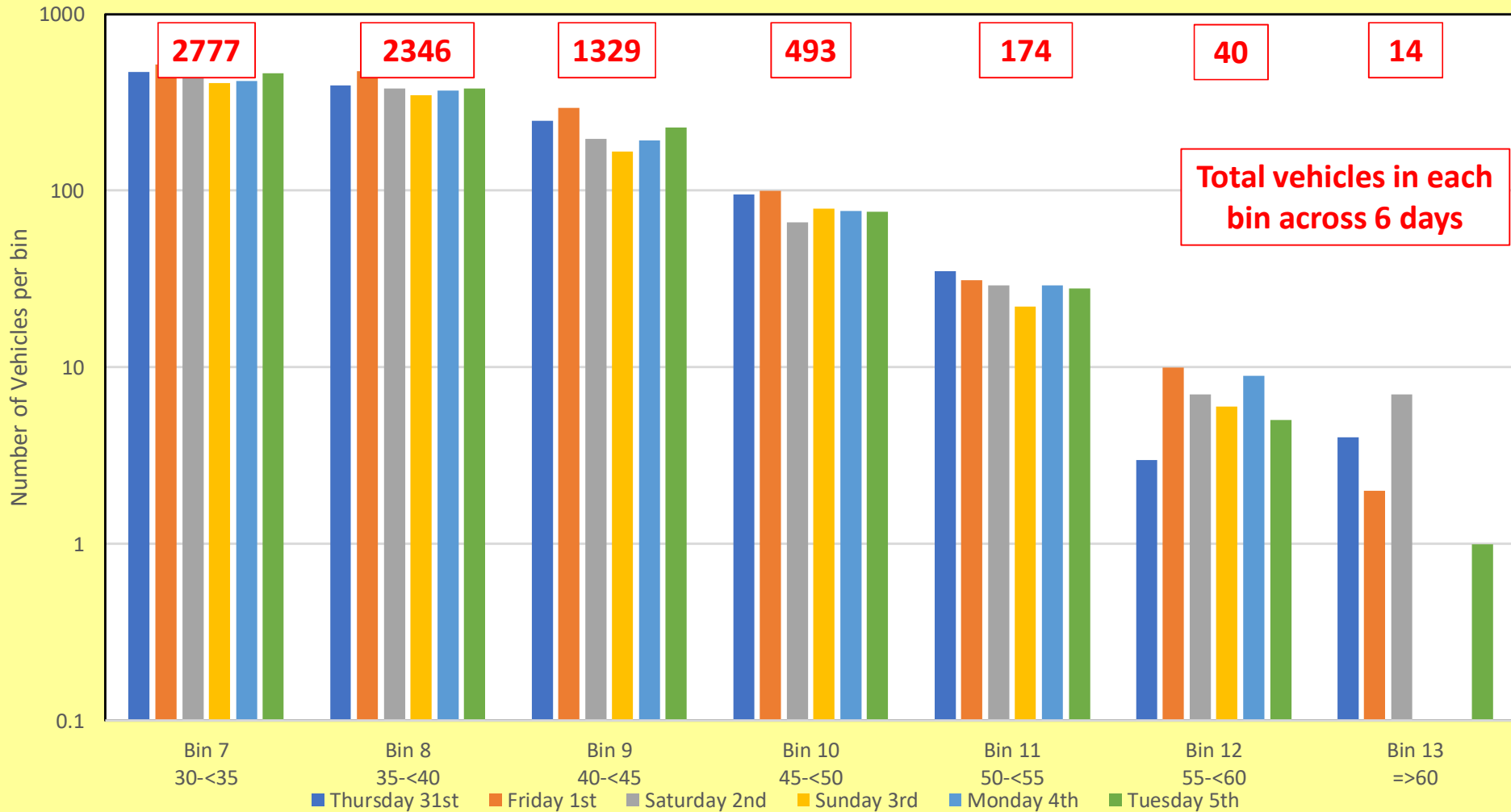
Crieff Road - all data (both directions) August 2017



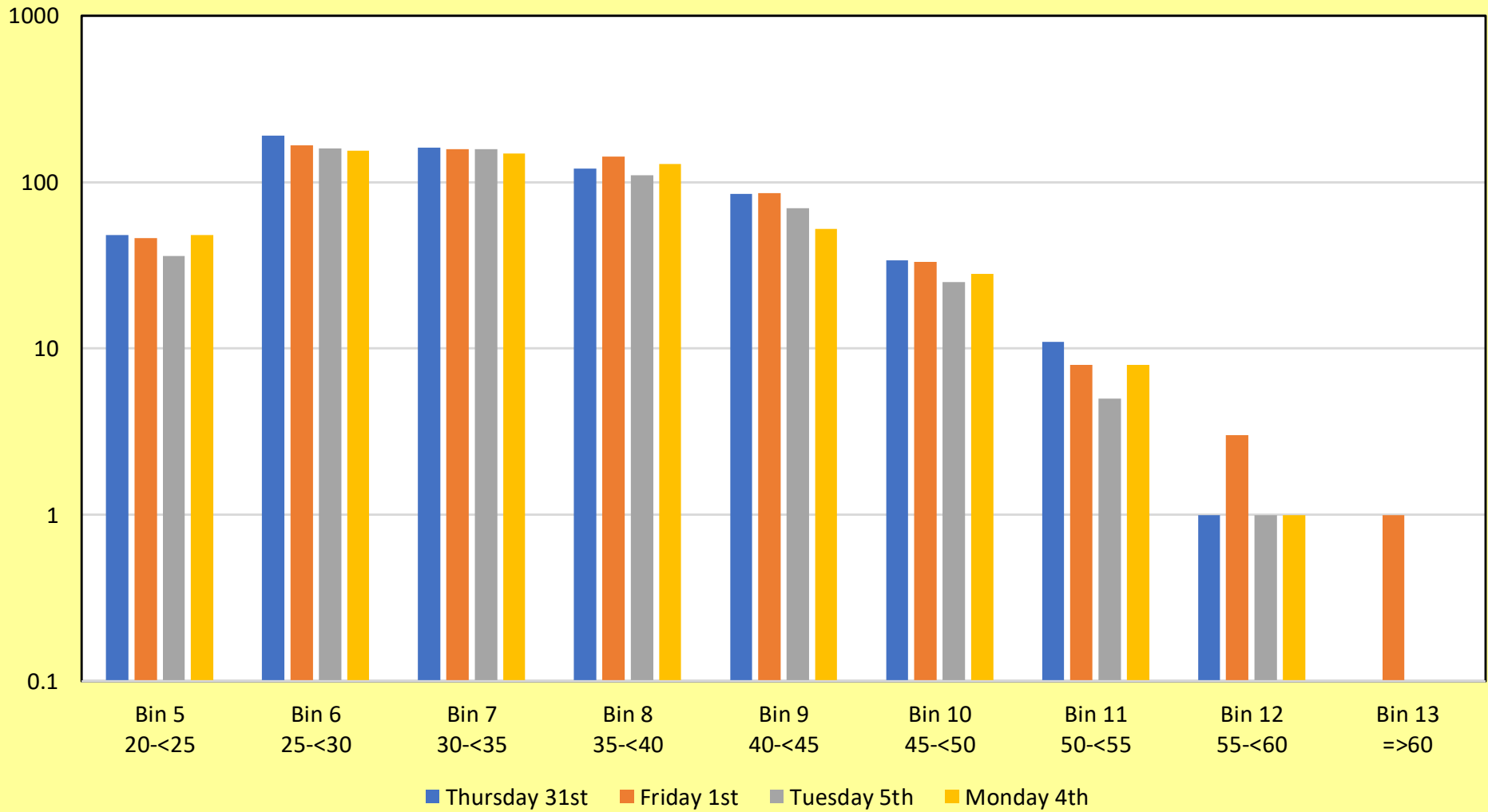
Crieff Road: "Shoulder" Hours to actual School at risk hours (Arrival, Lunchtime, Leaving)

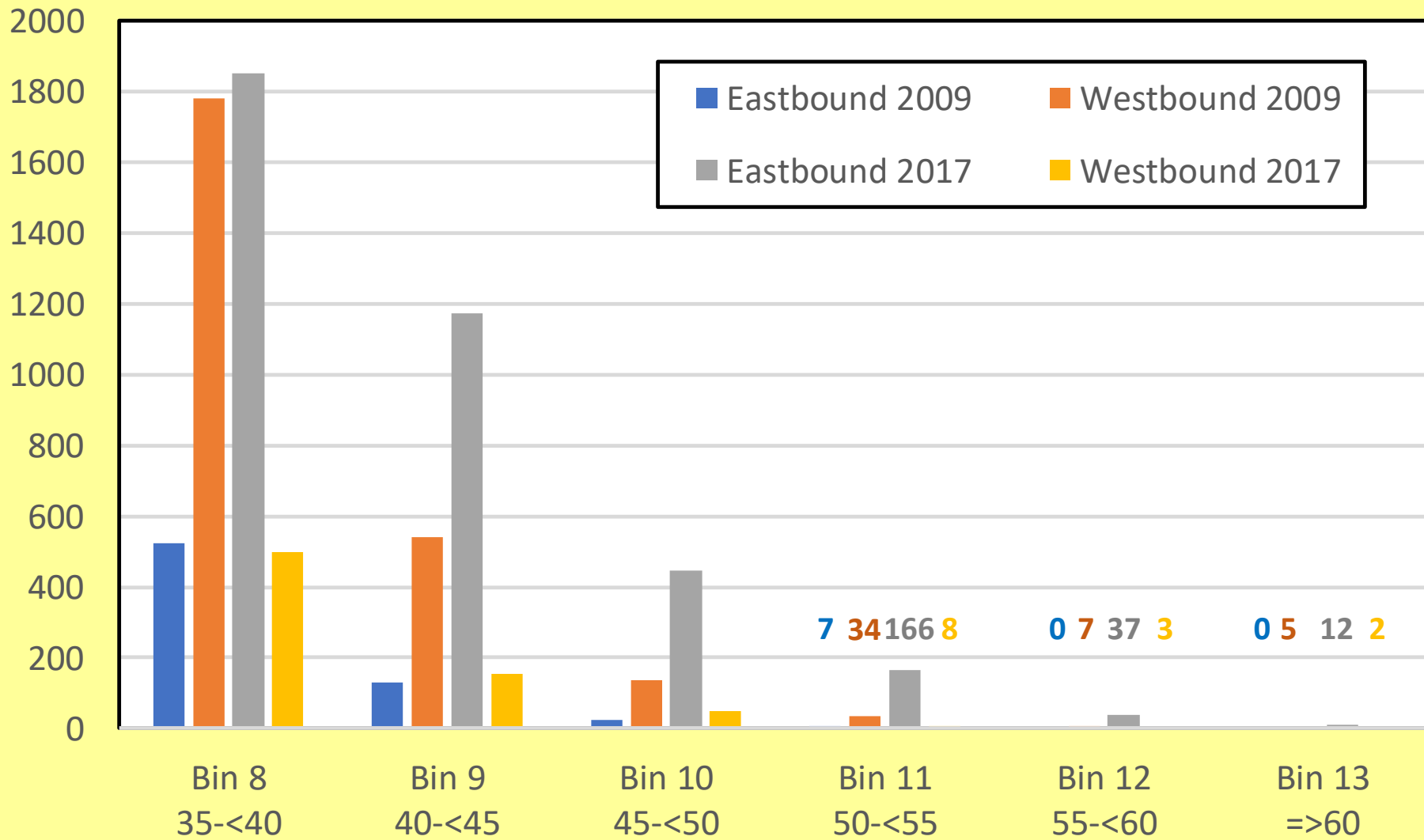


Kenmore Road - all data (both directions) August -September 2017

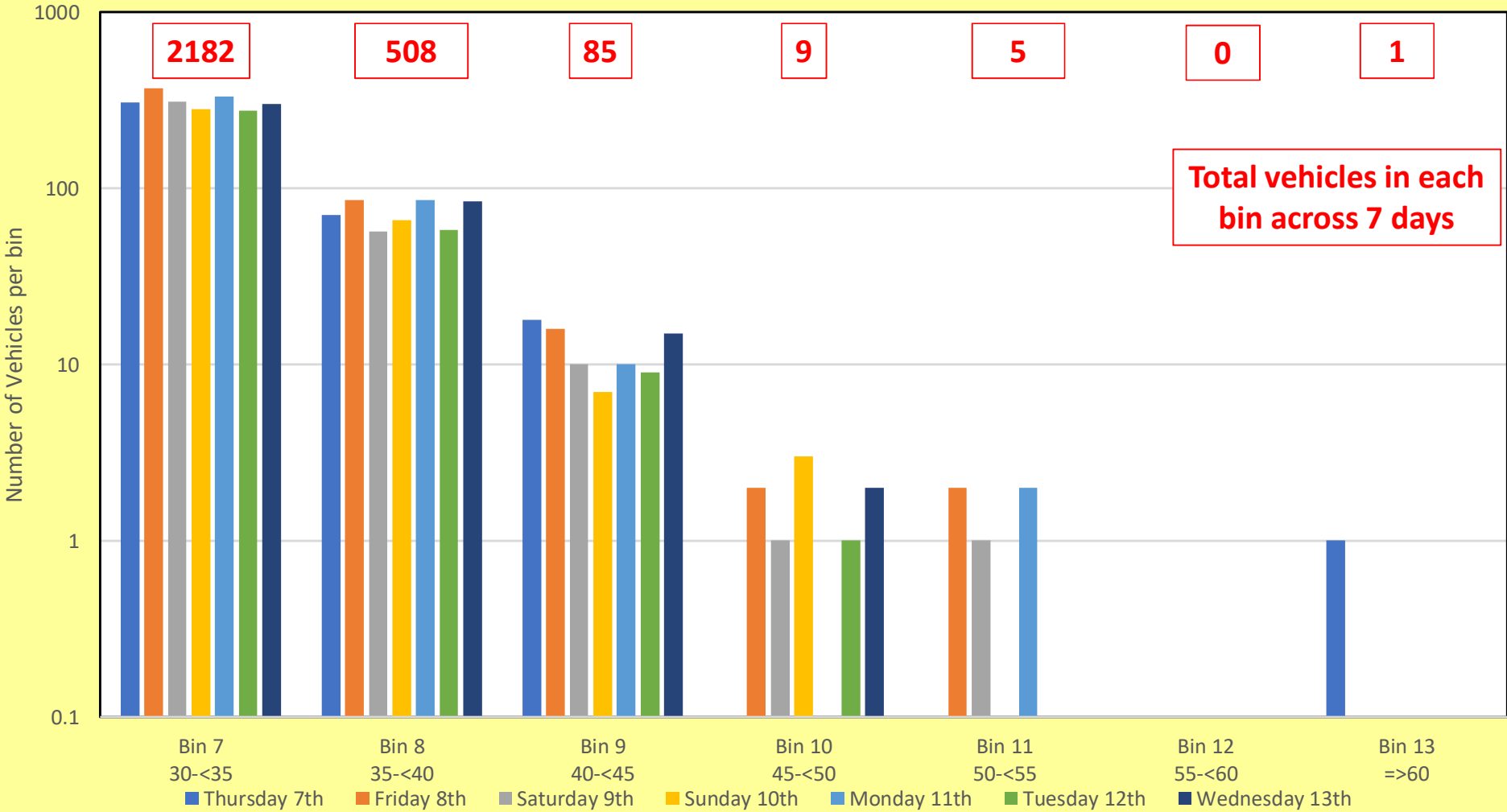


Kenmore Road: School at risk hours (Arrival, Lunchtime, Leaving)

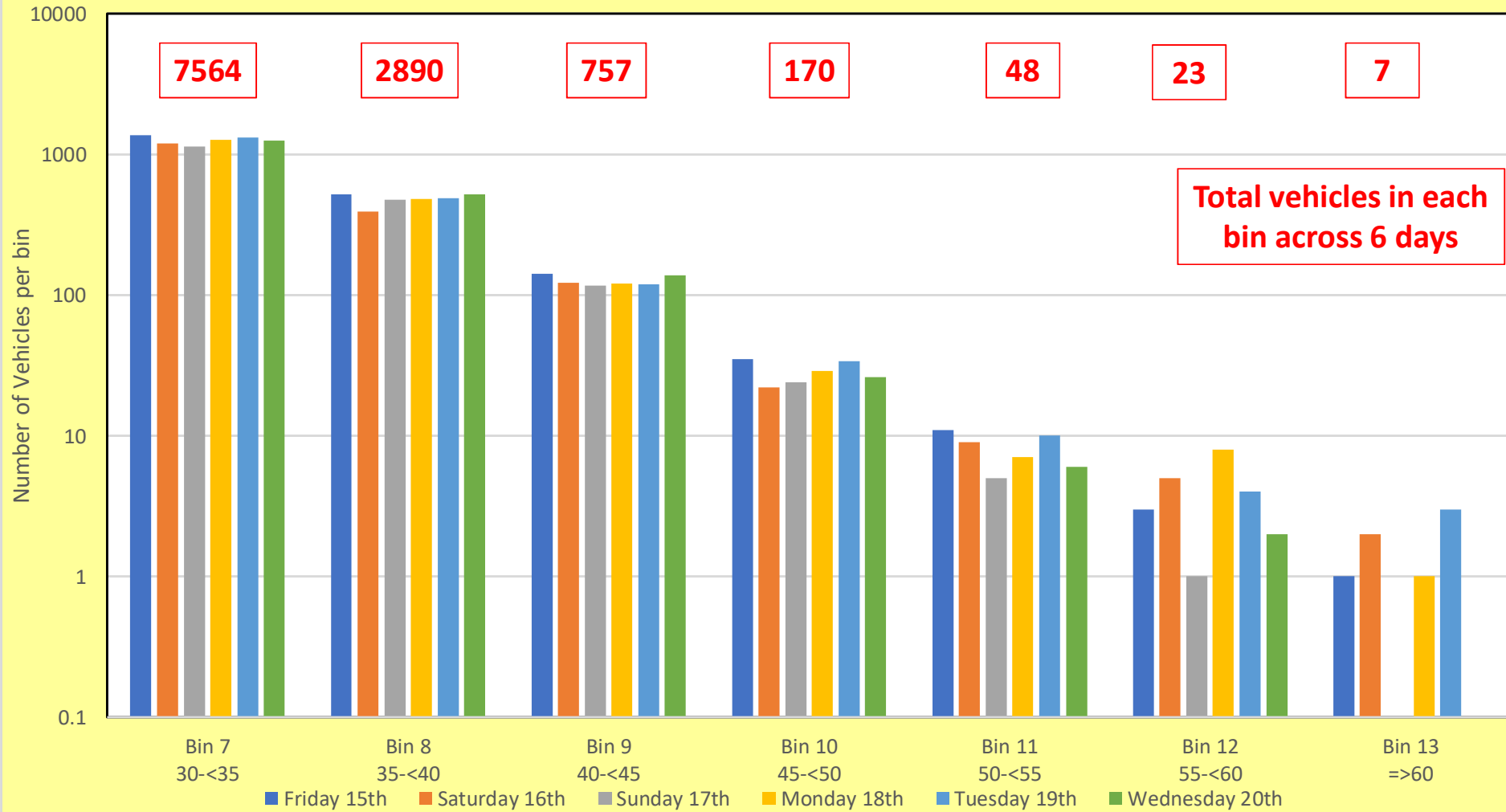




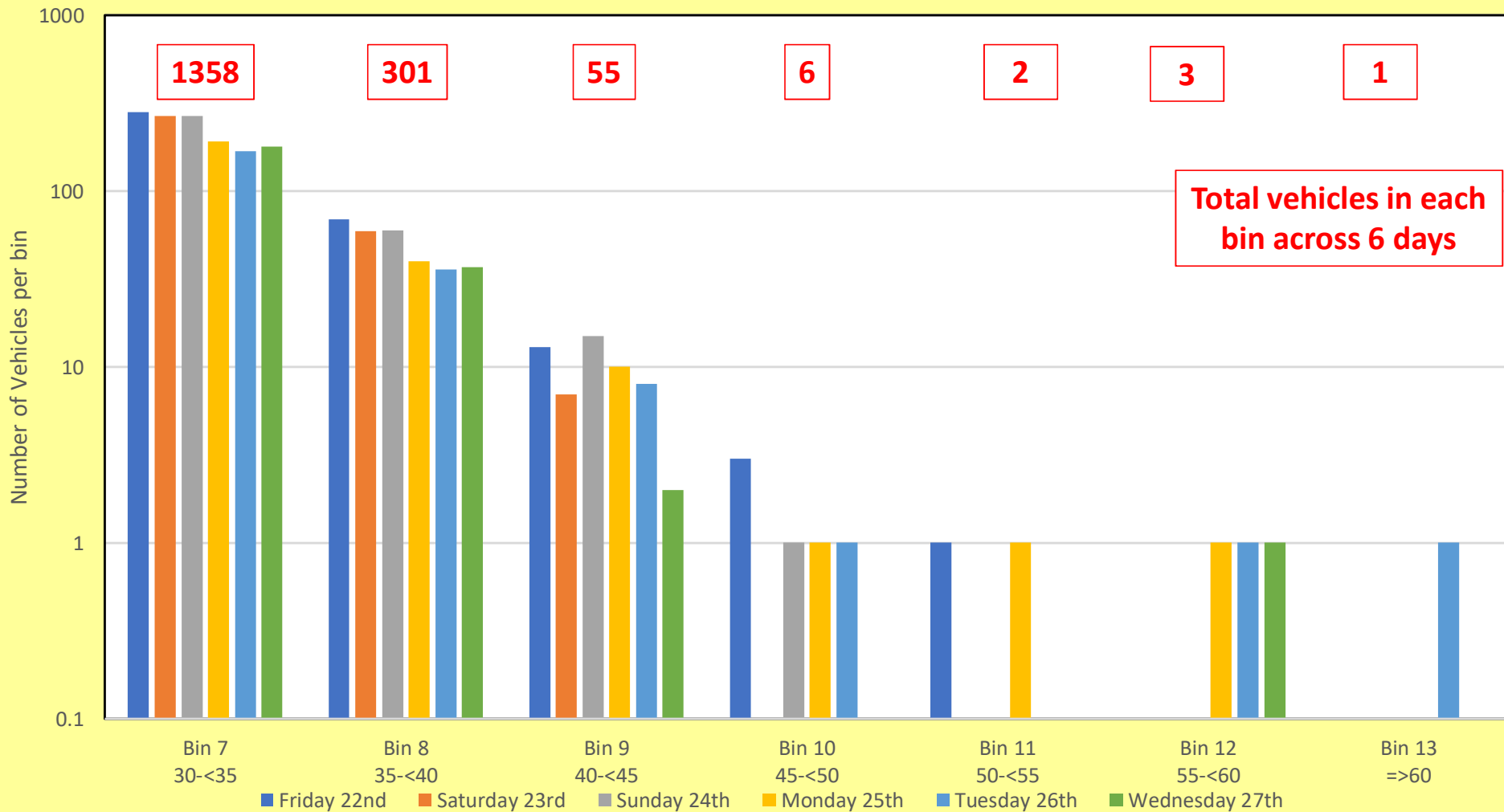
Taybridge Road - all data (both directions) September 2017



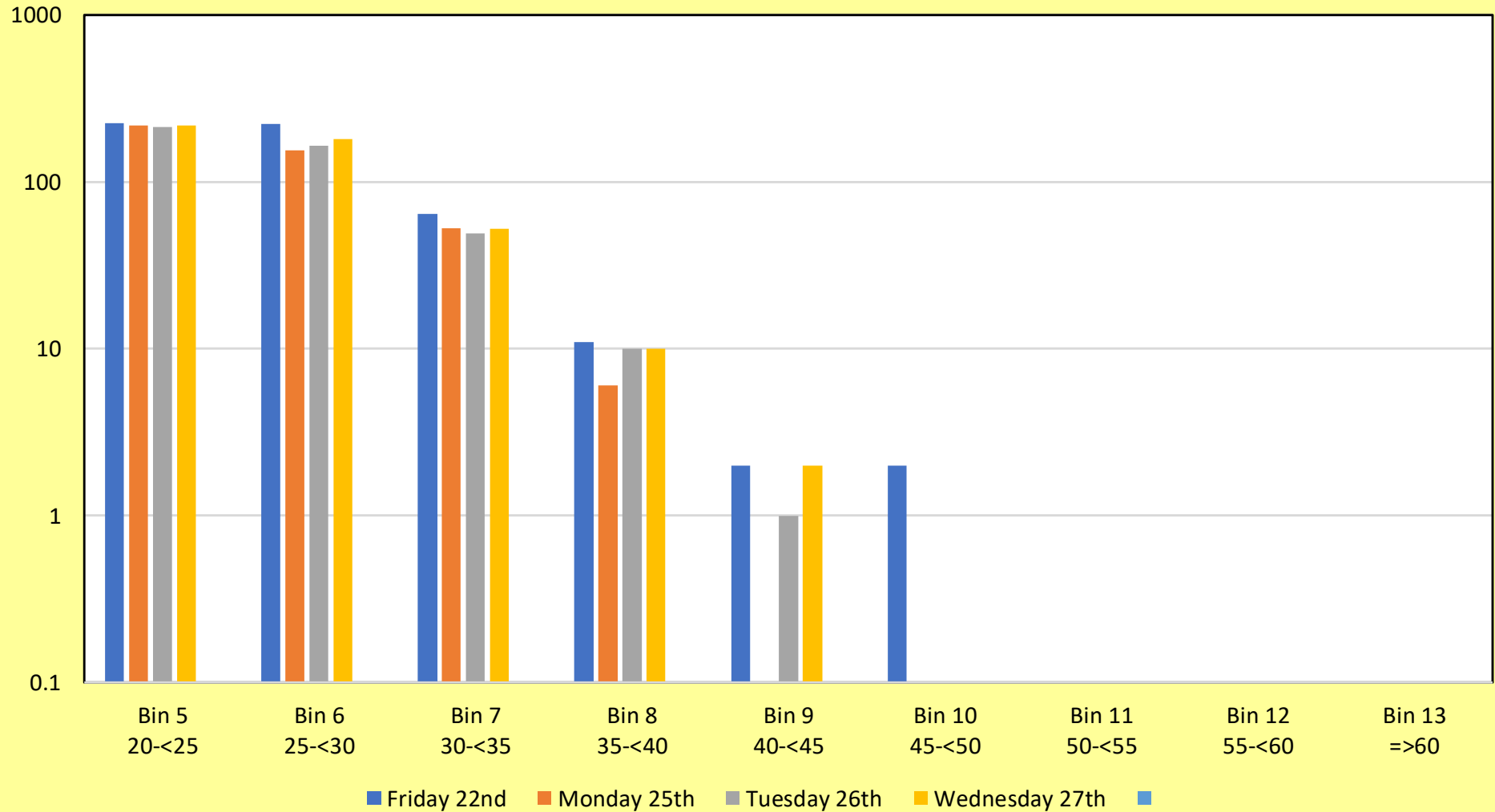
Dunkeld Road - all data (both directions) September 2017



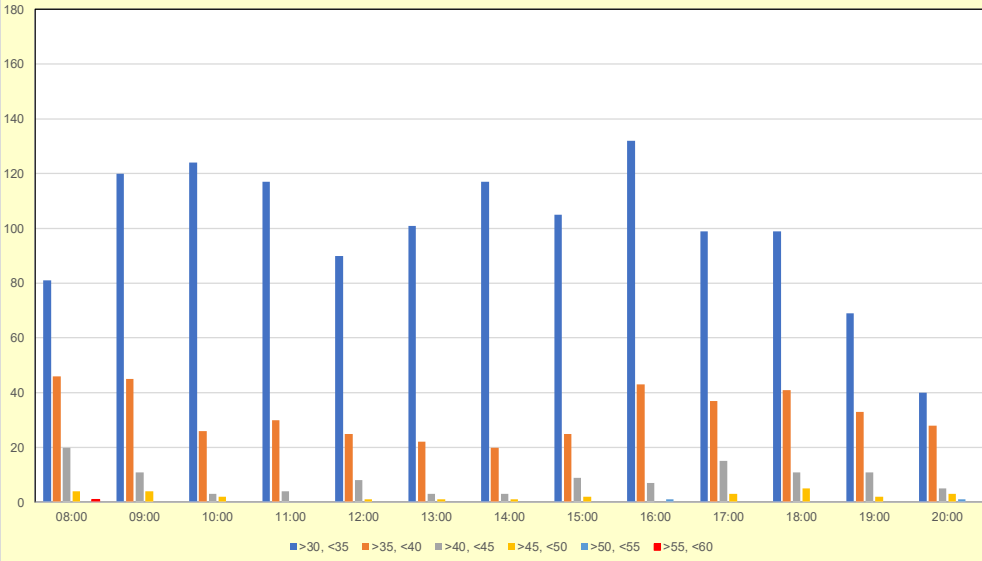
Kenmore Street- all data (both directions) September 2017



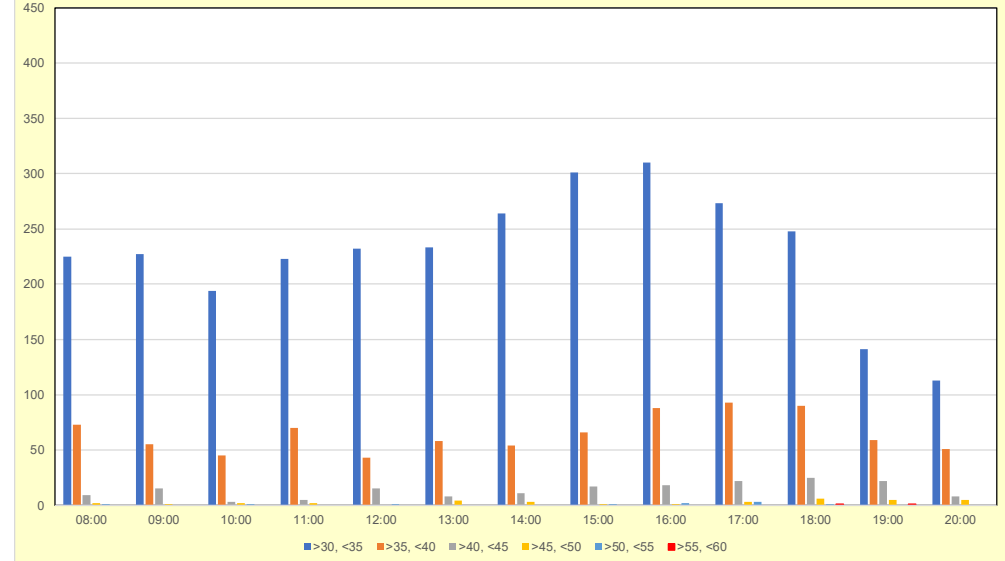
Kenmore Street: School at risk hours (Arrival, Lunchtime, Leaving)



Kenmore Road - Eastbound

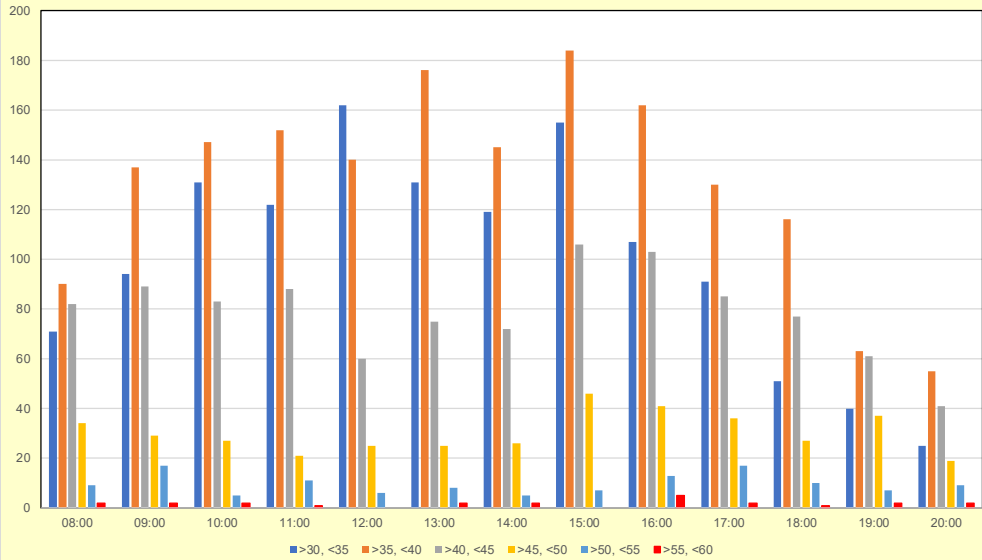


Dunkeld Road - Westbound

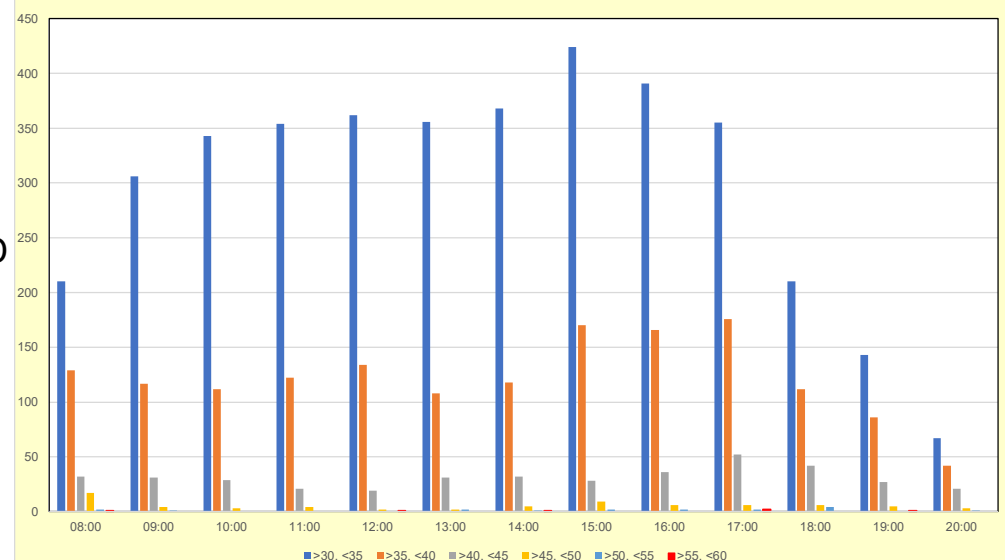


INBOUND TRAFFIC

Kenmore Road - Westbound



Dunkeld Road - Eastbound



OUTBOUND TRAFFIC