

## Ysbyty'r Chwarel

Agorwyd Ysbyty Chwarel Dinorwig ym 1876 a dim ond ym mhedwar degau'r ganrif bresennol y trowyd hi yn glinig cymorth cyntaf. Ac ystyried ei maint yr oedd yn yr ysbyty gyflenwad helaeth o gyfarpar ac o staff. Mae hynny'n dystiolaeth amlwg i'r ffaith fod damweiniau yn bethau cyffredin iawn yn y chwarel hyn.

Yr oedd iechyd llawer o'r chwarelwyr ac iechyd eu teuluoedd yn o fregus. Yr oedd eu tai llaith a chyfyng, a pheryglon eu gwaith yn gyson yn eu herbyn. 'Roedd gan rai o'r gweithwyr filltiroedd maith i'w cerdded ac ym 1912 dywedodd un o chwarelwyr Dinorwig mai'r tywydd oedd yn gyfrifol am lawer o afiechyd y dynion. 'Roedden nhw'n cael eu gwlychu at eu crwyn yn aml ac ni chaent fynd adref ar ôl gwlychu.

Yr oedd y dicâu yn gyffredin ymhlith chwarelwyr a'u teuluoedd, ac yn aml iawn yr oedd clefyd y llwch yn caethiwo'r frest ac yn agor bedd cynnar i'r gweithwyr anfodus. 'Roeddiid yn amau mor gynnar â dechrau'r ganrif ddiwethaf fod llwch y garreg las yn achosi hyn ond ar y 12fed o Dachwedd 1893 dywedodd Dr. Mills Roberts, llawfeddyg yn Ysbyty Dinorwig mewn adroddiad i W. W. Vivian, Rheolwr Cwmni'r Chwarel, na fu ei ymweliad â Chaernarfon i ymchwilio i'r mater o fawr fudd gan fod clefydau ar ysgyfaint 449 o ferched, 395 o ddynion nad oeddynt yn chwarelwyr, a 506 o chwarelwyr. Daeth Dr. Roberts i'r casgliad mai doethach fyddai gadael llonydd i'r nyth cacwn.

Ond yr oedd pryder Dr. Mills Roberts ynglŷn â'r chwarelwyr yn fawr, ac ym 1894 fe gynhyrchoedd daflen o'r enw 'A Few Practical Suggestions about the Health of Quarrymen'. Cyfeirir yn hwn at eu tai a'u dillad, at eu bwyd ac at y gofal a gymerent ohonynt eu hunain. Cynghorir nhw i newid eu dillad isaf yn aml ac i beidio ag yfed gormod o de wedi ei stiwiwio.

Ond yr oedd digon o ddyfeisgarwch yn perthyn i'r chwarelwyr i ymladd yn galed o'u plaid eu hunain. Sefydlwyd cymdeithasau cyfeillion a chlwbiau llês er mwyn hyrwyddo cynildeb, ac amddiffyn teuluoedd rhag cyfnodau o salwch. Digwyddai damweiniau yn aml, er yn llai aml nag yn y glofeydd. Gweithiai'r dynion yn uchel ar y graig, dan amgylchiadau peryglus, drwy gydol y flwyddyn. Gallai peiriannau'r chwarel hefyd achosi damweiniau. Yr oedd torri

## Quarry Hospital

The Dinorwic Quarry Hospital opened in 1876 and it was only in the 1940's that it was downgraded to a first aid post. For its size, the hospital was both well equipped and well staffed, which bears witness to the common occurrence of accidents.

Many quarrymen and their families suffered from poor health; poor housing and overcrowding, combined with the hazards of the men's work, weakened them. Some men had to walk long distances to work, and in 1912 a quarryman at the Dinorwic Quarry blamed the poor health of the men on the fact that they got "wet very often and were not allowed to go home after getting wet".

Tuberculosis was common among the quarrymen and their families, and the men often suffered from silicosis contracted from slate dust. A link with the inhalation of slate dust was suspected in the late 1800's, but on the 12th November, 1893, Dr. Mills Roberts, surgeon at Dinorwic Hospital, reported to W. W. Vivian, Manager of the Quarry Company, that his visit to Caernarfon to investigate this matter 'was not of much service'. Respiratory diseases among "women being 449; among males not quarrymen at 395, against 506 quarrymen." Dr. Roberts concluded that the matter was best left alone.

However, Dr. Mills Roberts was much concerned about the quarrymen, and in 1894 he circulated a leaflet entitled 'A Few Practical Suggestions about the Health of Quarrymen'. In this he refers to their houses and clothes, their eating habits and the care of their bodies. They were advised to change their underwear frequently and not to drink too much stewed tea.

But the quarrymen were an enterprising group and the motive for self-help was strong. Friendly societies and benefit clubs were set up to encourage saving and to protect their families against times of sickness. Accidents, although fewer in the coal mines, were frequent in the slate quarries. The men worked at great heights, in dangerous conditions, throughout the year. The Quarry machinery, too, could cause accidents. Fractures, contusions and ruptures of varying degrees of severity were regular occurrences. Many of these injuries stemmed from the appalling wintery weather,



*Staff yn Ysbyty Chwarel Dinorwig, cyn 1914*

*Staff at Dinorwic Quarry Hospital, pre 1914*

January 1938

Acting Matrons Salary	4	
Superintendents	1947	
Doctors Wages	4	
Surgeons	5108	
Charwoman	14	30 193
Porters Board	310	
Surgeons	310	7
Unkondens		

esgryn, torgest a briwiau yn digwydd yn rheolaidd. Achosid llawer o'r anafiadau hyn gan yr hinsawdd aeafol dychrynlyd, a oedd yn oeri'r corff ac yn arafu'r dynion. Yr oedd effeithiau'r damweiniau hyn yn ddifrifol ar adegau. Un tro pan oedd gŵr 52 mlwydd oed yn gweithio ar y graig wleb llithrodd ei drosol a syrthiodd yntau gan dorri ei fraich. Oherwydd canlyniadau hyn ar ei iechyd ni fedrodd y gŵr hwn weithio byth wedyn. 'Roedd briwiau yn bethau cynefin yn y cwt naddu ac ar waelod y ponciau. Mae'r graig yn holti'n fân, fân iawn a gall dorri'n ddwfn os digwydd lithro wrth gael ei llwytho. Mwy bradwrus oedd y mân nodwyddau pigfain o lechi a oedd ar daen ymhobman dros y gwaith. Y mae'r llyfr damweiniau yn cyfeirio droeon at ddynion a oedd yn clirio'r sbwriel llechi o'r ffordd pan dorwyd eu croen gan lafn bychan o graig. Buan iawn wedi hynny byddai'r dynion farw gan fod eu gwaed wedi gwenwyno. 'Roedd gwenwyno'r gwaed yn un o'r peryglon anochel hefo anafiadau mwy difrifol hefyd.

Yr oedd y diwydiant yn gorfod symud tunelli lawer o graig, felly, fel y gellid disgwyl, achosid nifer fawr o ddamweiniau oherwydd creigiau'n syrthio neu oherwydd i weithwyr gael eu gwasgu. A 'doedd ei oedran ddim yn arbed neb rhag y joban galetaf fel a brofir gan un digwyddiad pan oedd gŵr 69 mlwydd oed gydag wyth mlynedd a deugain o wasanaeth tu cefn iddo yn symud clwt mawr o graig ar lawr poncen pan lithrodd clwt arall a'i wasgu rhwng y ddau. Nid y clytiau anferth hyn oedd yr unig beryglon, yn aml iawn collwyd braich neu goes wrth eu dal rhwng wagenni ar y lein fach. Yr oedd syrthio o wyneb y graig yn angeuol bron yn ddiethriad a cheir sawl côf am ddynion yn syrthio wrth ddringo dros glytiau o graig. Mae llechi yn llithrig gynddeiriog pan fônt yn wlyb ac yn y

numbing the bodies and slowing the reactions of the workers. They sometimes had serious results, as on the occasion when a crowbar being used by a 52-year-old man slipped from the wet rock, causing him to fall and break his arm. The complications from this ended his working life. Cuts were common in the dressing sheds and on the floor of the galleries. Slate splits to a very fine edge and it cut deeply if a slab slipped while being loaded. More insidious were the needle-like splinters lying about all over the working sites. Time and again, the accident book records instances of men who, in clearing away the slate waste, pricked their skin and soon after contracted blood poisoning, which usually proved fatal. This was also the ever-present risk associated with the more serious injuries.

The industry was concerned with moving great weights of slate and so, as might be expected, crush injuries as well as accidents involving falling rock were not uncommon. Age apparently gave no exemption from the hardest jobs as is shown by one incident where a 69-year-old man with forty eight years of service was "shifting a block of slate on the floor of a gallery with a crowbar, when another block slipped and he was squashed between the two". Many of the non-fatal crush injuries arose not from the huge slabs but from the loaded trains and wagons, where limbs were often trapped between vehicles. Falls from the rock face were almost invariably fatal, and there were many instances of men falling when clambering over fallen slate. Slate is notoriously slippery when wet and the workers did not have the benefit of special footwear. The workshops themselves were the sources of more conventional accidents such as eye injuries, burns and scalds and incidents associated with belt-driven machinery.

9.4.20. DINORWIC QUARRY HOSPITAL.

Nurse

April 20

CLINICAL CHART OF TEMPERATURE & C

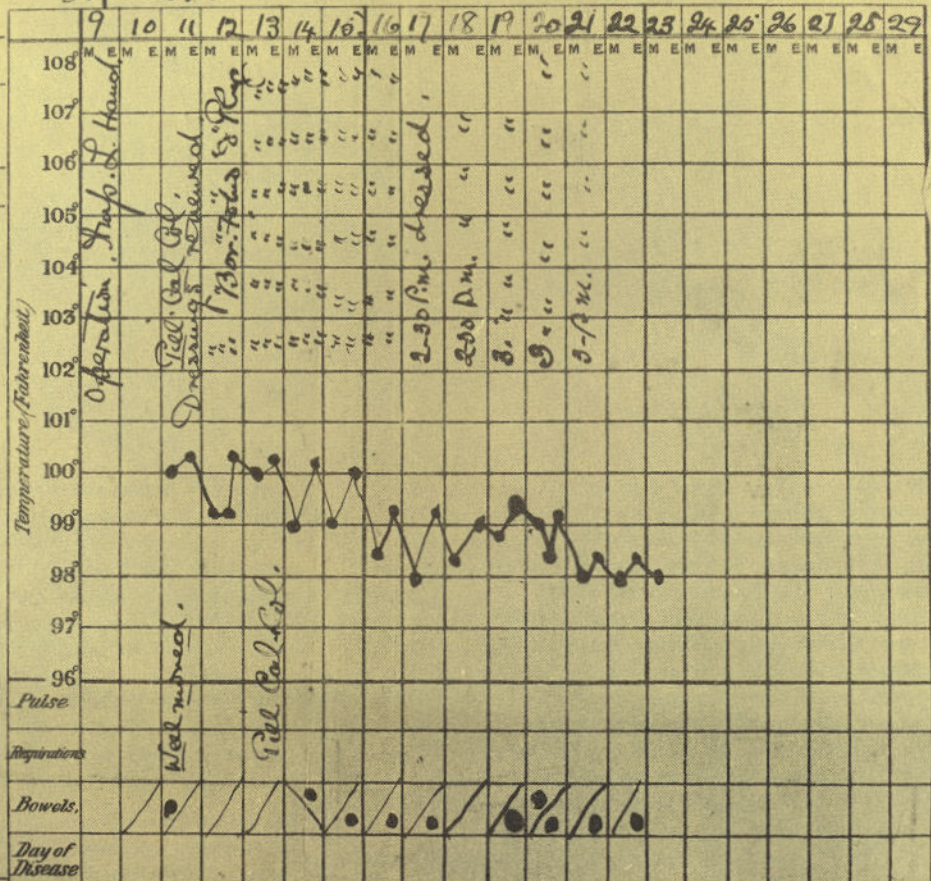
Name Jones Jh.

Age &c 48.

DISEASE.

Amputation of  
Left hand.

Notes of Case.



Result.

cyfnod hwnnw doedd gan y gweithwyr ddim sgidiau arbennig o unrhyw fath. Yr oedd llawer o ddamweiniau mwy confensiynol yn digwydd yn y gweithdai eu hunain, sef niweidio'r llygaid, llosgi neu wlyblosgi a brifo efo'r peiriannau a weithiwyd gan felt o'r olwyn ddŵr.

Yng ngweithdy'r chwarel ei hunan y gwnaethpwyd peth o'r cyfarpar a ddefnyddid gan y staff meddygol. Gan fod llawer o ddamweiniau yn digwydd mewn mannau anhygyrch, weithiau gannoedd o droedfeddi i fyny'r mynydd, un o'r blaenoriaethau oedd achub y

Some of the equipment used by the medical teams was made in the Quarry Workshops. Since many of the accidents occurred in the inaccessible parts of the quarry, often several hundred feet up the mountain, one of the prime requisites was to recover victims as quickly as possible. A shaped wicker stretcher was made to support the contours of the injured man's body. This enabled the rescuers to lower casualties vertically down rock faces, and in many cases the time saved prevented an injury becoming a fatality. For less urgent cases, there was still the difficulty of carrying a loaded

gweithiwr cyn gynted ag y medrid. Lluniwyd elor wiail i gynnal y claf fel y gellid ei ollwng yn syth i lawr wyneb y graig, a throeon bu'r amser a arbedwyd fel hyn yn ddigon i arbed bywyd y truan. Gydag achosion llai brysiog yr anhawster oedd cario'r claf ar elor dros y tir creigiog, anwastad, felly adeiladodd y gweithwyr gerbyd arbennig yn cynnwys llwyfan a oedd yn ffitio ar dryc y gellid ei gwthio ar hyd y lein fach.

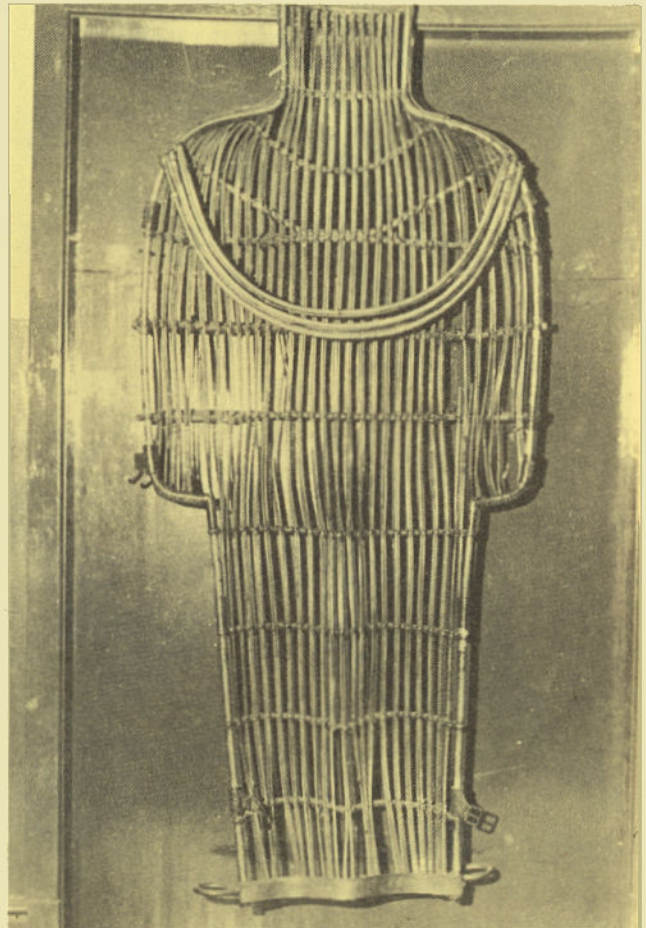
Er gwaethaf y cymhorthion hyn anaml iawn y gellid cael at y cleifion a'u dychwelyd i'r ysbyty yn rhwydd a chyflym, ac yr oedd yr oerfel yn wastad yn berig. Ar bob lefal yn y chwarel cadwyd tân ynghŷn i gadw'r dŵr yn gynnes a digon o rwymynnau a sblintiau a photeli dŵr poeth. Rhai haearn oedd y rhain, a rwymwyd un bob



stretcher over rocky and uneven terrain and so the workers built a special carriage consisting of a stretcher top clipped to a bogie capable of running along the railway lines.

Despite these aids, recovery of casualties was rarely quick or easy and the possibility of exposure was always present. On each of the quarry levels the fire was kept burning in the caban to keep the water hot, and supplies of dressings and splints were stored here as were the hot water bottles. These were metal and shaped like motor car silencers; one strapped on each side of the man provided warmth on the way to the hospital.

The hospital had its own wards, operating theatre, a post mortem room, mortuary and a chapel.



ochr i'r claf i'w gynhesu ar ei ffordd i'r ysbyty. 'Roedd yn yr ysbyty wardiau, theatr lawfeddygol, ystafell trengholiad, marwdy, a chapel.

Cewch weld tri o'r gwelyau gwreiddiol yn lân ac yn barod ar gyfer y claf nesaf, ac ar y silffoedd mae tiwbiau ar gyfer un o'r unedau Pelydr X cyntaf yng Ngogledd Cymru. Seiri'r chwarel ddaru wneud y bwrdd llawdriniaeth a'r sofffa archwilio. Dros y sofffa hon gwelir potel ddŵr poeth fawr a fedrai gynhesu'r gweithwyr oedd dan oerfel. O'r cychwyn cyntaf 'roedd dŵr poeth ac oer i'w gael o'r tapiau ac mae'r sinc wreiddiol yma o hyd yn ogystal â'r chwistrell Lister a ddefnyddid fel gwrth-heintydd yn yr ystafell lawdriniaeth.

Ar gyfer niwed i'r llygad lluniwyd cadair arbennig, efo gobenydd symudol, ac os torrid asgwrn neu golli braich neu goes gallai gofaint y cwmni lunio cymhorthion arbennig i gynnal y claf.

Yn yr ystafell drengholi sydd i lawr y grisiau yn y seler rhodddwyd bwrdd llechen wedi ei loywi, ag efo sianelau a draeniau yn rhan

Three of the original beds can be seen clean and ready for the next admission, while the shelves still store replacement tubes for what was one of the earliest X-ray Units in North Wales. An adjustable operating table was made by the joiners, as was the examination couch. This is covered by what is virtually a large hot water bottle to provide rapid warming of the chilled patients. Hot and cold running water was installed from the beginning and the original sink is on display together with a Lister spray used for antiseptic in the operating room.

For eye injuries a special chair was made and fitted with an adjustable head rest, while fractures and amputation cases were supplied with limb supports constructed to individual measurements by the company's blacksmiths.

In the Post Mortem room, which was located in the basement, the table was fashioned from a polished slate slab, complete with channels and drain holes.



*Offer yr ysbyty*

*Hospital instruments*







*Dr. R. H. Mills Roberts*

*Dr. R. H. Mills Roberts*

ddefnyddiol iawn ohono.

Dr. Hughes MD oedd meddyg cyntaf y chwarel tan 1893. Yr oedd yn byw yn Hafodty, Dinorwig lle roedd yn ymarfer yn breifat yn ogystal â bod yn ddoctor chwarel. Gweithiai yn Ysbyty'r Chwarel o naw y bore tan hanner dydd chwe diwrnod yr wythnos. Yr oedd gan y doctor ferlen a thrap i'w gario'n hwylus at ei gleifion yn eu cartrefi ac yn yr ysbyty, ac y mae lôn yn arwain o'r ysbyty at yn agos iawn i Hafodty er na ellir dweud yn bendant os adeiladwyd y ffordd hon yn benodol ar gyfer y doctor. Rhedai'r lôn dros ran uchaf Chwarel Vivian ond ni ellir ei gweld bellach oherwydd chwarela diweddarach. Claddwyd Dr. Hughes ym mynwent eglwys Deiniolen.

Ym 1893 penodwyd Dr. R. H. Mills Roberts yn feddyg yn y chwarel er ei fod yntau hefyd yn ymarfer yn breifat.

Ganed hwn ym Mhenmachno ar 5 Awst 1862 ac fe'i addysgwyd yn

The first doctor at the quarry until 1893 was Dr. Hughes, MD, and he lived at Hafodty, Dinorwig, where he held private practice as well as being the Quarry Doctor. He was in attendance at the Quarry Hospital from 9 a.m. until noon, six days a week. To help him visit his patients and call at the hospital he had a pony and trap. Whether a road was made specially for the doctor cannot be confirmed, but one leads down to the hospital through the wood quite close to Hafodty. It was laid down over the upper part of the Vivian Quarry, but this section can no longer be seen as a result of the quarrying.

Dr. Hughes is buried in the churchyard at Deiniolen.

Dr. R. H. Mills Roberts was appointed as the Quarry doctor in 1893, although he, too, held a private practice.

He was born in Penmachno on 5th August, 1862, and was educated at Friars School, Bangor. In 1882 he went to London as a



*Tim pel-droed Preston North End 1888  
(Dr. Mills Roberts — rhes gefn, ar y dde)*

*Preston North End football team 1888  
(Dr. Mills Roberts — Back row on the right)*

Ysgol Friars, Bangor. Ym 1882 aeth i Lundain fel myfyriwr meddygol yn Ysbyty St. Thomas ac enillodd y graddau M.R.C.S. a L.R.C.P. ym 1887. Mae llawer o hanesion, nid yn unig am ei ddawn fawr a'i garedigrwydd fel meddyg ac fel llawfeddyg, ond hefyd am ei allu ar y maes peldroed efo Preston North End. Dewiswyd o i chwarae dros Gymru ym mis Chwefror 1885 ac aeth yn ei flaen i ennill saith cap arall rhwng 1885 a 1892. Dywedwyd droeon mai uchafbwynt y gemau hyn oedd ei orchestion o fel golgeidwad. Dyma a ddywed y 'Football News and Athletic Journal', dydd Sadwrn 24 Mawrth 1888 amdano — "Fel golgeidwad y mae'n ddigyffro ac yn gyflym, yn wastad ar flaenau ei draed, mae'n cael gwared o'r bêl yn sydyn a phrin y mae byth yn gwneud dim o'i le, golgeidwad gorau ei ddydd."

Yn fuan wedi iddo gyrraedd Llanberis trefnodd gêm bel droed i hel arian at elusen. Cyn y gêm heriodd bawb i geisio sgorio cic gosb yn ei erbyn, ond ddaru na neb lwyddo.

Wrth fynd i'r chwarel i roi ei sylw i unrhyw ddamwain ddifrifol yr oedd yn wastad yn cario ei chwistrell wedi ei diheintio bob amser, ac mae hon i'w gweld yn yr ysbyty. Ei frawd oedd doctor Chwarel y Penrhyn, Bethesda, a chredir y bu ef yn un o arloeswyr maes Anaesthetics ym Mhrydain. Mae'n bur debyg bod Dr. R. H. Mills

medical student at St. Thomas' Hospital and obtained his M.R.C.S. and L.R.C.P. degrees in 1887. There are many stories, not only about his considerable ability and kindness as a doctor and surgeon, but also of his sporting prowess with Preston North End, the football club. He was first selected to play for Wales in February 1885, and he went on to win a further seven caps between 1885 and 1892. It was reported many times that the highlight of these matches was his performance in goal. Extract from the 'Football News and Athletic Journal' Saturday, 24th March, 1888 — "As goalkeeper he is cool and quick, always on the alert, gets rid of the ball quickly and rarely makes a mistake, the best goalkeeper of the day."

Soon after he arrived in Llanberis, he organised a charity football match. Before the match he challenged anybody to take a penalty kick, but no-one scored a goal against him.

Dr. Mills Roberts would go into the quarry to attend a very serious accident, and his travelling hypodermic syringe, always ready sterilised, is on display in the hospital. His brother was the quarry doctor at the Penrhyn Quarry, Bethesda, and it is thought that he pioneered the use of anaesthetic in this country. It is very likely that Dr. R. H. Mills Roberts followed closely in his brother's footsteps.

Roberts wedi dilyn yn agos iawn at ôl troed ei frawd. Yr oedd ei ddawn fel llawfeddyg yn ddiymwad a rhoddai sylw mawr i gadw ei gleifion yn iach a diddos ar ôl eu llawdriniaeth.

*Bu damwain ddifrifol yn y chwarel, a gŵr o Fethel, Edward Jones, yn ei chanol. Bu'n rhaid torri ei ddwy fraich i ffwrdd — un wrth yr ysgwydd a'r llall wrth yr arddwrn. Gyda chydweithrediad Dr. Mills Roberts, llawfeddyg y chwarel, lluniodd Thomas Hughes y Gof declyn a alluogai'r gŵr i ddal llwy a chyllell i fwyta ac i dynnu ei het i ffwrdd wrth fynd i'r capel. Yr oedd o fudd mawr i'r creadur anffodus.*

Yn cynorthwyo Dr. Mills Roberts yr oedd matron breswyl llawn amser o'r enw Mrs. Gladys Jones, a phorthor. Yr oedd dynes 'llnau yn dod yno bob dydd a chafwyd cymorth di-ail gan y gofalwyr Mr. a Mrs. Hughes. Er nad oedd ganddo gymwysterau meddygol daeth Mr. Hughes i fod ym gymhorthydd amryddawn i Dr. Mills Roberts a buan y gwnaeth enw iddo'i hun fel meddyg esgyrn ac fel gŵr hysbys ym maes meddygaeth yn gyffredinol. Yr oedd hefyd yn grefftwr medrus a fu'n helpu i gynllunio ac yn gwneuthur cymhorthion i weithwyr oedd wedi colli aelodau o'u corff. Bu'n gweithio yn Ysbyty'r Chwarel tan 1964 pan fu farw.

Yr oedd Dr. Mills Roberts yn hoff iawn o bethau milwrol. Bu'n gwasanaethu yn rhyfel y Boer ac yn swyddog gyda'r Ffiwsilwyr

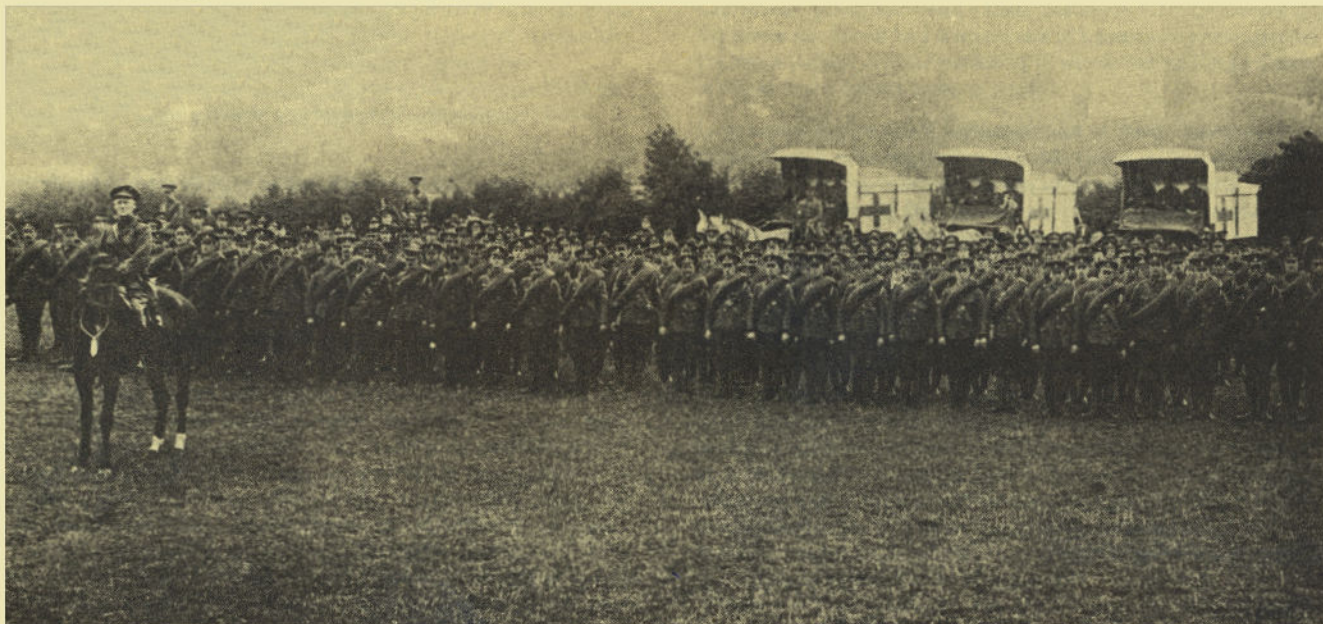
*welshgenealogy.net*

His skill as a surgeon was well known and he paid great attention to the health and comfort of his patients after surgery.

*There was a serious accident at the quarry and a man from Bethel called Edward Jones was in it. Both his arms had to be amputated, one at the shoulder and the other at the wrist. Thomas Hughes, with the co-operation of Dr. Mills Roberts, the quarry surgeon, made a contraption by which the man could hold a spoon and knife to eat with and could take his hat off when going to chapel. It was a great boon to the unfortunate man. Thomas Hughes y Gof made a clever job of it.*

Dr. Mills Roberts was assisted by a full-time resident matron, Mrs. Gladys Jones, and a porter. A cleaner attended daily, while unique help was provided by the caretakers, Mr. and Mrs. Hughes. Although not medically qualified, Mr. Hughes became a versatile assistant to Dr. Mills Roberts and gained a reputation for general treatment and the setting of broken bones. He was also a skilled craftsman and was able to help in the design and manufacture of aids for amputees. Mr. Hughes worked in the Quarry Hospital until he died in 1964.

Dr. Mills Roberts was a great military man. He had served in the Boer War and was an officer in the Royal Welch Fusiliers. He also commanded a branch of the volunteers in Llanberis. His battalion



*Dr. Mills Roberts, 131 Field Ambulance 38th Welsh Division*

*Dr. Mills Roberts, 131 Field Ambulance 38th Welsh Division*

Cymreig. Yr oedd hefyd yn rheoli cangen o wirfoddolwyr yn Llanberis. Galwyd ar ei fatalion i ymladd yn rhyfel 1914 ac ni ddychwelodd i Lanberis. Bu farw ym 1935 ac fe'i claddwyd yn Ffestiniog.

Y doctor nesaf yn y Chwarel oedd Dr. Wyn Jones, brodor o Fangor, a fu yn y swydd tan 1940. Erbyn hynny yr oedd cyfleusterau llawfeddygol ar gael ym Mangor yn Ysbyty Môn ac Arfon ond yr oedd ysbyty'r chwarel yn dal ei thir fel canolfan cymorth cyntaf.

was called up in the 1914 war and he did not return to Llanberis. He died in 1935 and was buried in Ffestiniog.

He was succeeded as Quarry Doctor by Dr. Wyn Jones, a native of Bangor, who held this position until 1940. By this time surgical facilities were available at the C. and A. Hospital in Bangor, but the hospital continued to be manned by Mr. and Mrs. Hughes as a first aid post, until the early 1960's.