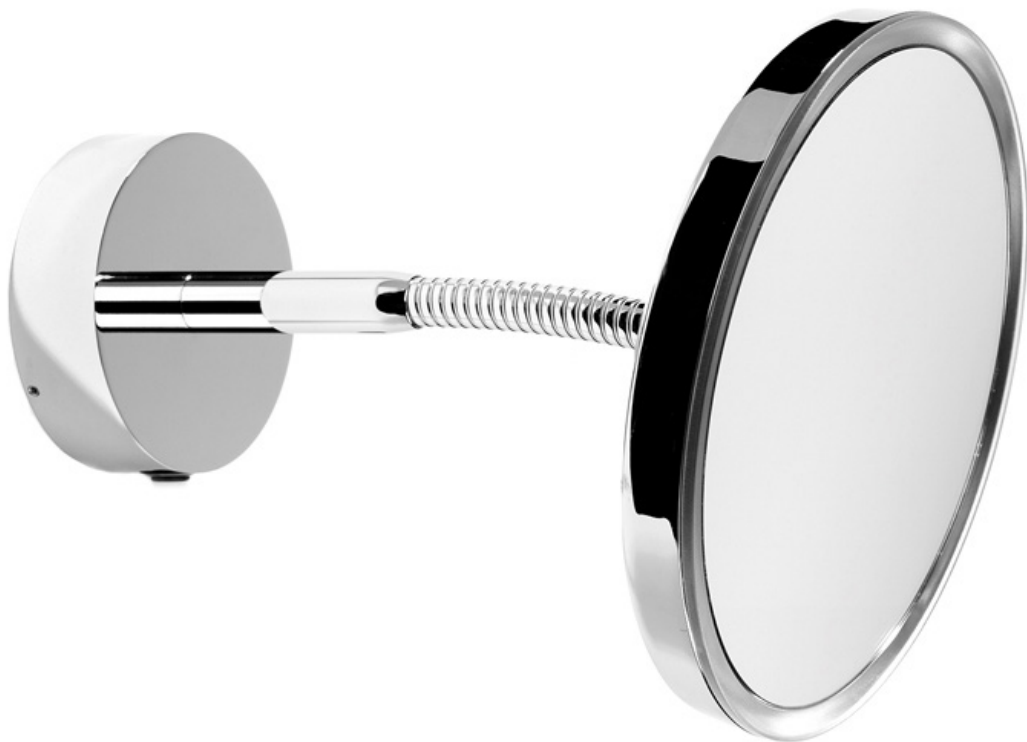
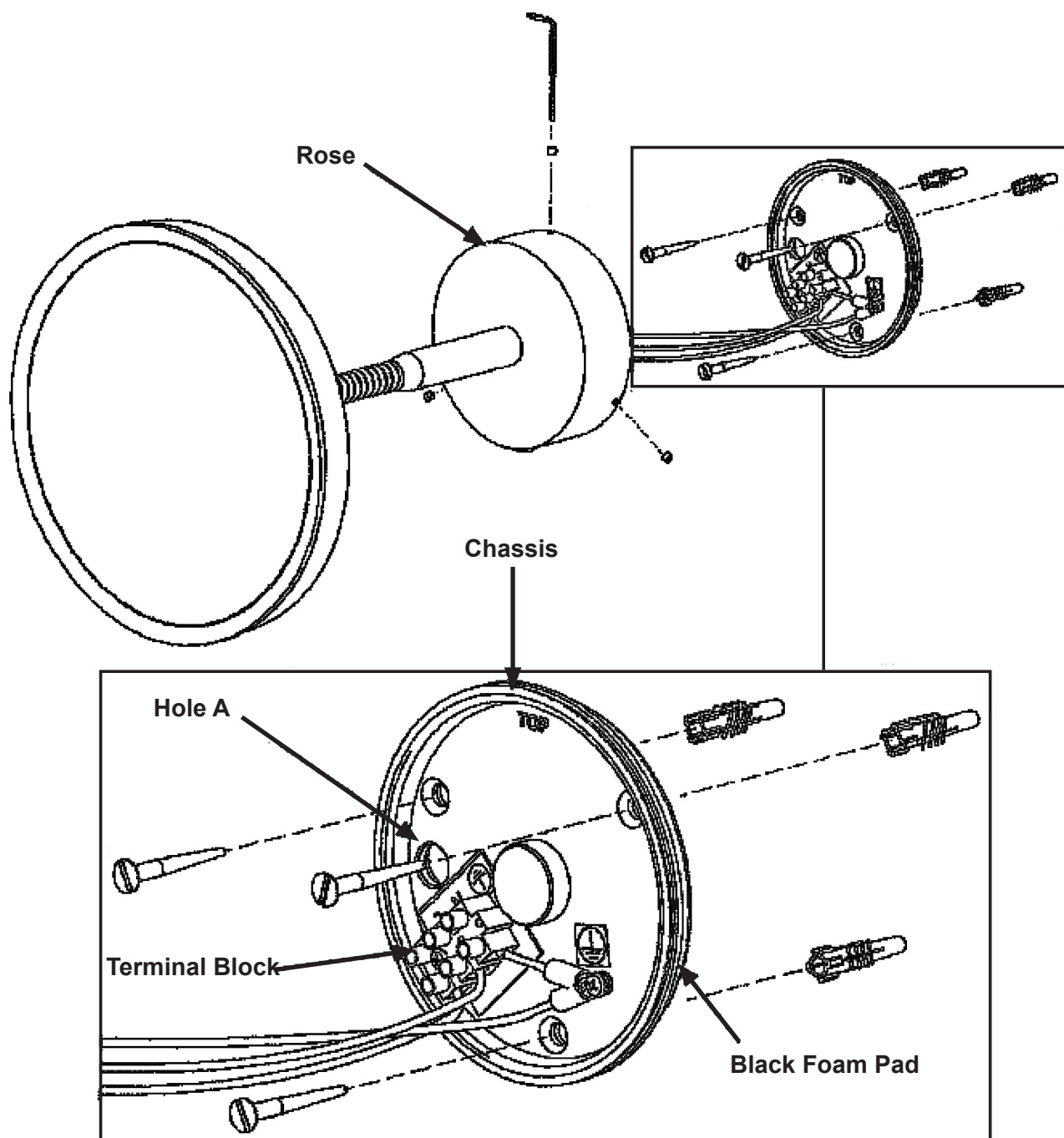


SAMUEL HEATH

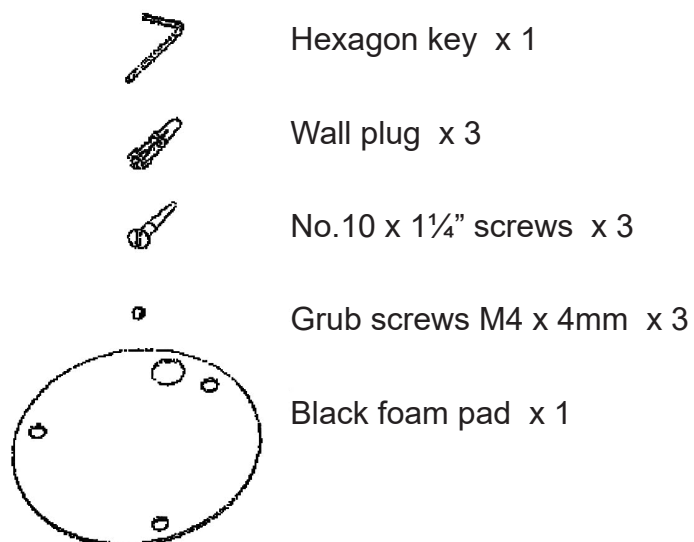
PRODUCT DATA SHEET

N520-1 LED ILLUMINATED MIRROR





Fixing parts included:



INSTALLATION GUIDELINES

IMPORTANT NOTE: this product is only suitable for connecting to solid core wiring.

1. It is recommended that this product be fed from a lighting circuit via a 3A fuse.
2. This LED mirror should be fitted by a qualified electrician who is fully conversant with relevant regulations.
3. Offer mirror chassis to the wall as illustrated ensuring that the text “TOP” is at the top.
4. Mark the three fixing holes and insert wall plugs. Stick the black foam pad to the face of the chassis that will be screwed to the wall. Screw chassis into position ensuring that the power cable has been threaded through “Hole A”.

Note: Due to leverage on the mirror, it is vital that the chassis is anchored securely. It may therefore be necessary to alternative sized screws and wall plugs to those provided.

5. Connect wiring to terminal block located on the chassis ensuring that the order is followed as stated on the wiring label.
6. Assemble the mirror to the chassis by pushing the rose over the chassis ensuring that the switch is at the bottom, and the marking inside the rose saying “TOP” is at the top.
7. Tighten the three grub screws evenly using the Allen key provided.

Note: this is a maintenance free product with a life expectancy of 50,000 hours. It cannot be rewired

CLEANING AND CARE INSTRUCTIONS

To maintain the appearance of your products clean by using a soft damp cloth and dry with a soft dry cloth or chamois leather. For stubborn stains use diluted washing up liquid.

Do not use abrasive or acidic cleaning products, scouring agents, products containing alcohol, scouring pads or steel wool.

Nickel finishes will provide a wonderfully rich lustre and over time develop an individual patina of their own, often what is called a “living finish”. However nickel finishes do require regular care. It is important to clean nickel finishes after use to prevent them tarnishing. Water should be dried off and prevented from building up and forming hard water spots (which if left are difficult to remove). Such care and attention will also prevent lime scale build up. Soap and water is all that is needed to clean nickel – the secret is to clean your brassware regularly. Please note that unlacquered nickel finishes will be affected in marine or coastal environments where a chrome plated finish may be preferable.

Mirrors can be cleaned in seconds with just water and a soft cloth. For very dirty surfaces, you might need to use some water diluted with washing-up liquid and applied with a sponge, then wiped and buffed dry with that soft cloth. Abrasive cleaning materials must not be used.

SAMUEL HEATH
Head Office and Customer Service
Leopold Street
Birmingham
England
B12 0UJ

T: +44 (0)121 766 4200
F: +44 (0)121 772 3334

Info@samuel-heath.com
www.samuel-heath.com

US Customer Service
usa@samuel-heath.com
Federal I.D. No. 58-1504682
www.samuel-heath.com/us

9-1837
Issue: B