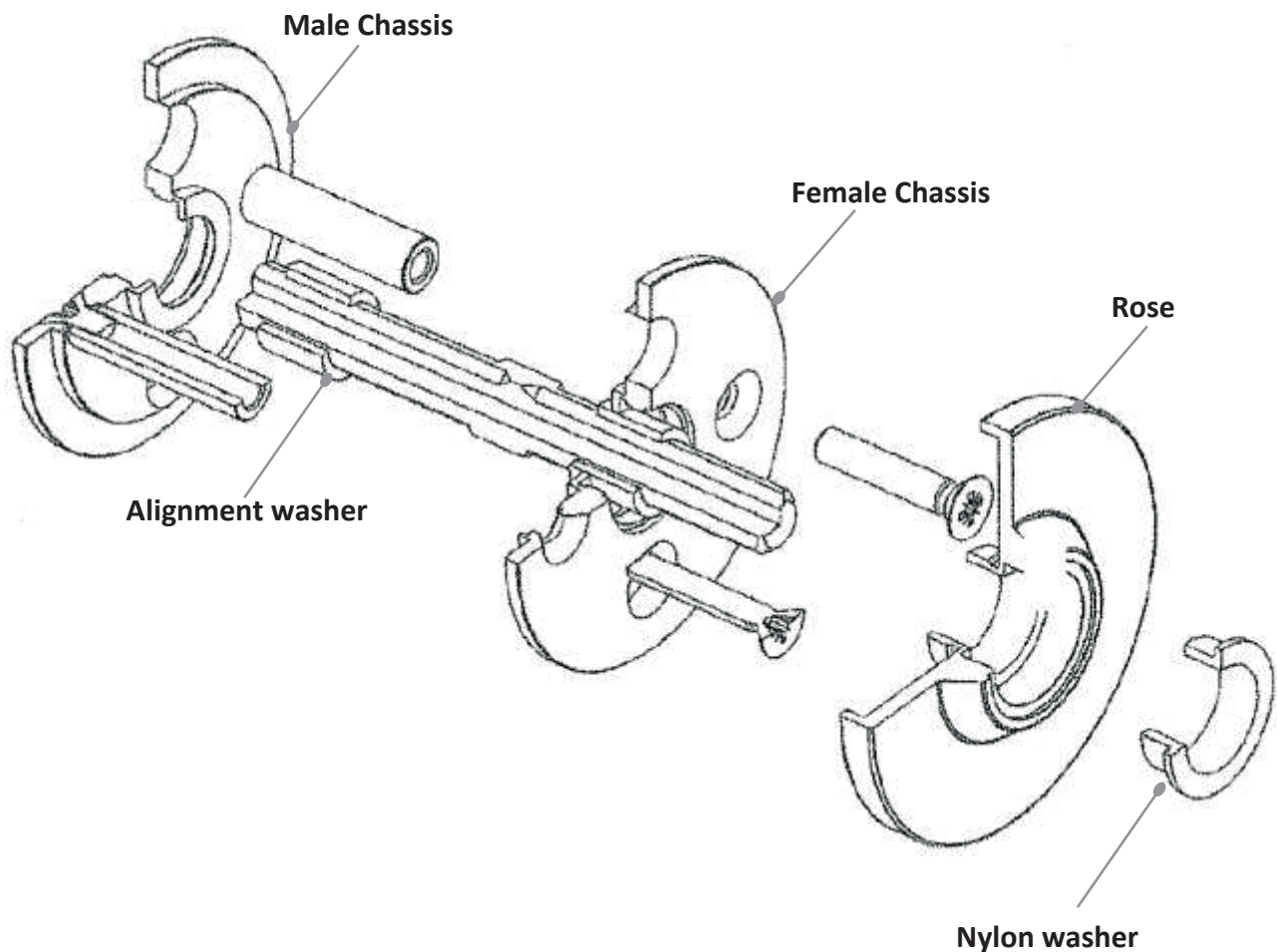


# SAMUEL HEATH

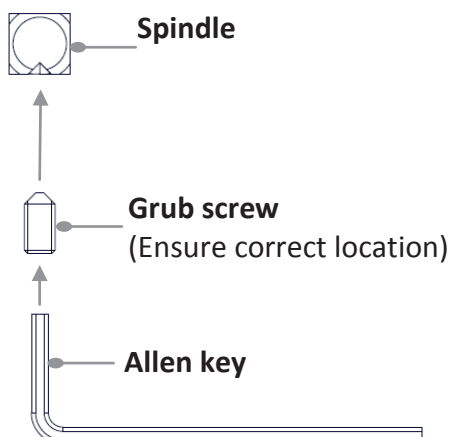
## Product Data Sheet

### P4030-XX Pre-Bored Door Adaptor

For use with: P8001-B, P8001-C, P8003-B, P8003-C, P8006-C, P8009-C



#### Assembling the Grub Screw



#### WARNING:

IF THE GRUB SCREW IS NOT TIGHTENED INTO THE SLOT SECURELY THE FURNITURE MAY BECOME LOOSE

# SAMUEL HEATH

**Pre Installation – We recommend the use of a strongly sprung latch for our solid door furniture, heavy sprung if using our unsprung lever handle.**

**Important: Please disregard the fitting instructions and assembled chassis that are supplied with the rose.**

**Please note that the alignment washers should be removed from the rose pack and the spindle from the knob pack for installation.**

1. Feed the spindle through the lock follower (Set screw channel underneath).
  2. Fit both male & female chassis loosely to the door.
  3. Slide alignment washers over the spindle to ensure that the spindle is aligned correctly with the middle of each chassis.
  4. Now tighten chassis.
  5. Discard alignment washers once both chassis are installed correctly.
  6. With spindle set centrally (See Diagram overleaf) screw on roses until both are flush with the door.
  7. Complete installation as per main diagram overleaf.
  8. When fitting the door furniture the set screw should be located on the underside.
- If spindle length requires reducing, cut equal off both ends.
  - Longer spindles available to order Ref: P9949.XX (plain slotted).

**SAMUEL HEATH**  
**Head Office and Customer Service**  
Leopold Street  
Birmingham  
England  
B12 0UJ

T: +44 (0)121 766 4200  
F: +44 (0)121 772 3334

Info@samuel-heath.com  
www.samuel-heath.co.uk

**US Customer Service**  
usa@samuel-heath.com  
Federal I.D. No. 58-1504682  
www.samuel-heath.com

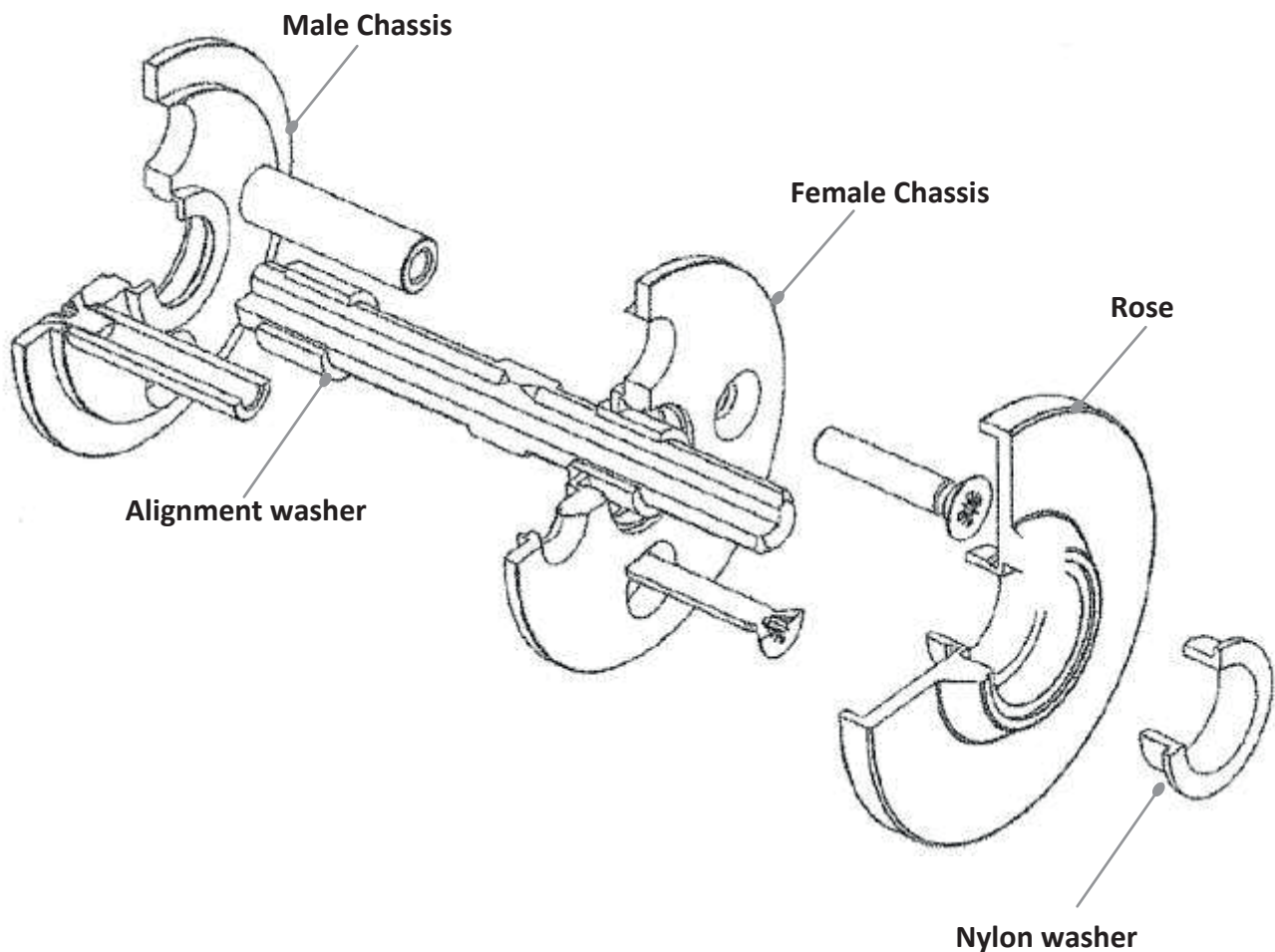
9-1907  
Issue: C

# SAMUEL HEATH

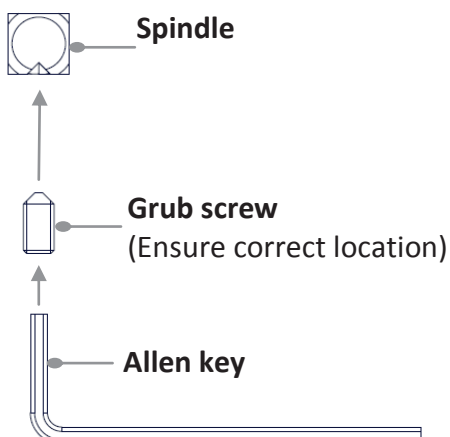
## Product Data Sheet

### P4030-XX Pre-Bored Door Adaptor

For use with: P8001-B, P8001-C, P8003-B, P8003-C, P8006-C, P8009-C



#### Assembling the Grub Screw



#### WARNING:

IF THE GRUB SCREW IS NOT TIGHTENED INTO THE SLOT SECURELY THE FURNITURE MAY BECOME LOOSE

# SAMUEL HEATH

**Pre Installation – We recommend the use of a strongly sprung latch for our solid door furniture, heavy sprung if using our unsprung lever handle.**

**Important: Please disregard the fitting instructions and assembled chassis that are supplied with the rose.**

**Please note that the alignment washers should be removed from the rose pack and the spindle from the knob pack for installation.**

1. Feed the spindle through the lock follower (Set screw channel underneath).
  2. Fit both male & female chassis loosely to the door.
  3. Slide alignment washers over the spindle to ensure that the spindle is aligned correctly with the middle of each chassis.
  4. Now tighten chassis.
  5. Discard alignment washers once both chassis are installed correctly.
  6. With spindle set centrally (See Diagram overleaf) screw on roses until both are flush with the door.
  7. Complete installation as per main diagram overleaf.
  8. When fitting the door furniture the set screw should be located on the underside.
- If spindle length requires reducing, cut equal off both ends.
  - Longer spindles available to order Ref: P9949.XX (plain slotted).

**SAMUEL HEATH**  
**Head Office and Customer Service**  
Leopold Street  
Birmingham  
England  
B12 0UJ

T: +44 (0)121 766 4200  
F: +44 (0)121 772 3334

Info@samuel-heath.com  
www.samuel-heath.co.uk

**US Customer Service**  
usa@samuel-heath.com  
Federal I.D. No. 58-1504682  
www.samuel-heath.com

9-1907  
Issue: C