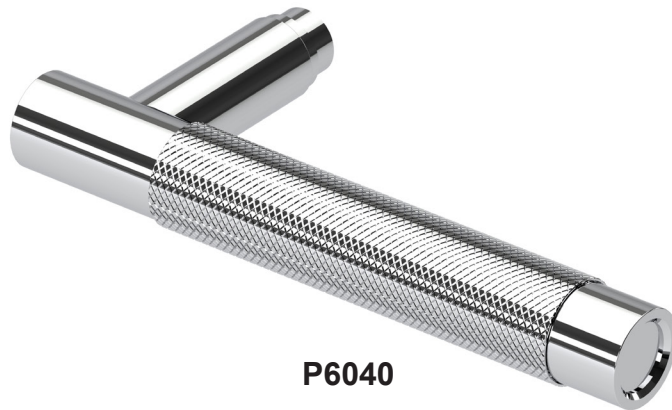


SAMUEL HEATH

Product Data Sheet

P6040/ P6044/ P6046 Door Handle

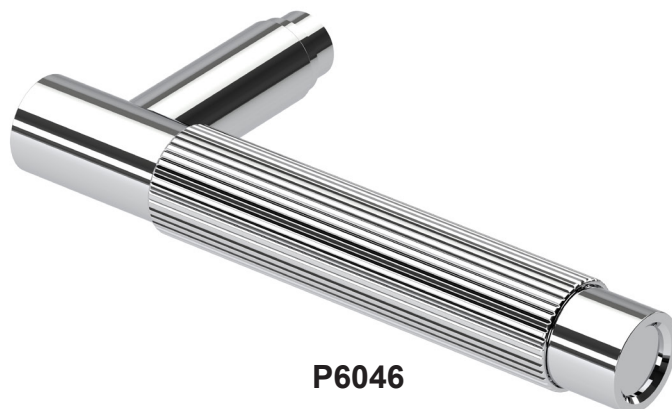
For use with P8010 (Includes Anti-Rotation Grub Screw)



P6040



P6044

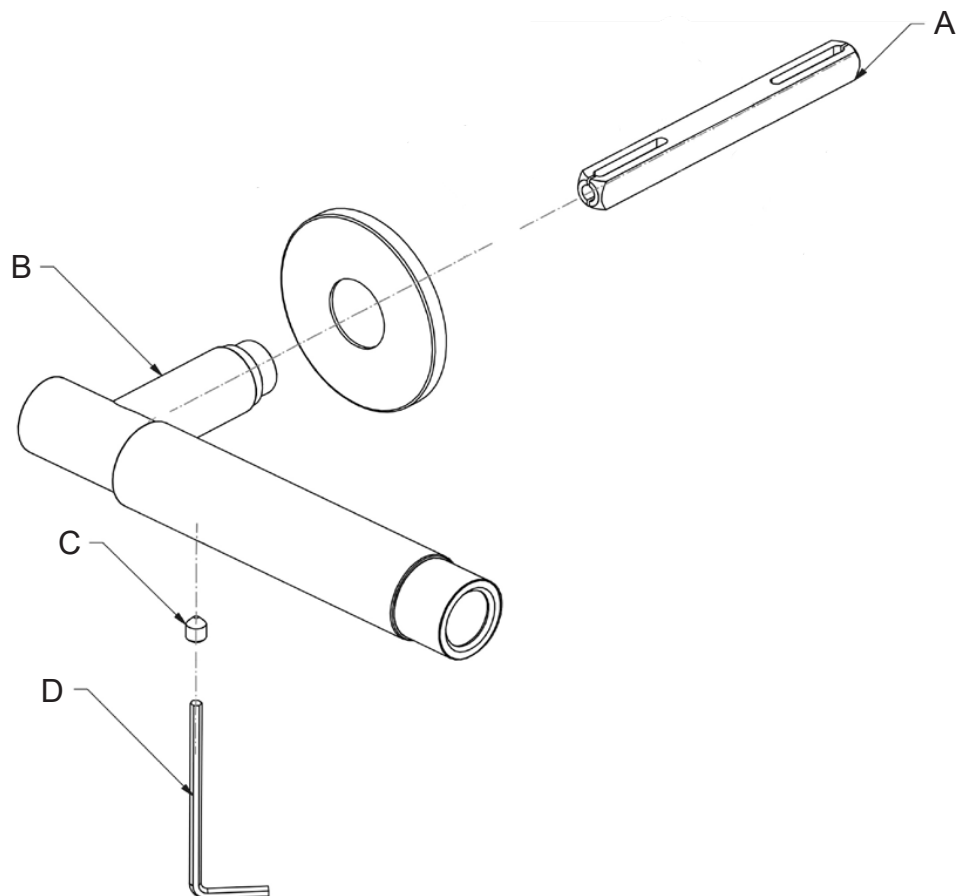


P6046

Includes anti-rotation grub screws.

Fitting Instructions

Pre-Installation - A heavy sprung latch must be used with this solid door furniture.



Item	Description	QTY
A	Spindle	1
B	Handle Assembly	2
C	Grub Screw	2
D	Allen Key	1

Fitting Instructions

1. Insert spindle (A) into the lock-case so that it sits at an equal distance out of each side of the door.
 2. Push handle assembly (B) onto the spindle (A) and butt up against the rose.
 3. Secure in place using grub screw (C) and allen key (D). Repeat the process on the other side of the door.
 4. When fitting the furniture the grub screw should be tightened securely into the spindle slot which should be facing down.
- Spindle supplied will suit standard 1 3/4" (44mm) door.
 - If spindle length requires reducing, cut equal off both ends.
 - Longer spindles available to order. Ref: P9949.xx (Plain Slotted).

**WARNING: IF THE GRUB SCREW IS NOT TIGHTENED
SECURELY INTO THE SLOT
THE FURNITURE MAY COME LOOSE**

SAMUEL HEATH
Head Office and Customer Service
Leopold Street
Birmingham
England
B12 0UJ

T: +44 (0)121 766 4200

Info@samuel-heath.com
www.samuel-heath.co.uk

US Customer Service
usa@samuel-heath.com
Federal I.D. No. 58-1504682
www.samuel-heath.com

9-3037
Issue: F