

$$1. \frac{1}{4} + \frac{2}{4} =$$

$$6. \frac{1}{3} + \frac{1}{3} + \frac{1}{3} =$$

$$2. \frac{5}{8} + \frac{2}{8} =$$

$$7. \frac{1}{4} + \frac{1}{4} + \frac{1}{4} =$$

$$3. \frac{1}{3} + \frac{1}{3} =$$

$$8. \frac{2}{6} + \frac{1}{6} + \frac{1}{6} =$$

$$4. \frac{4}{6} + \frac{1}{6} =$$

$$9. \frac{3}{8} + \frac{1}{8} + \frac{1}{8} =$$

$$5. \frac{3}{5} + \frac{1}{5} =$$

$$10. \frac{1}{6} + \frac{1}{6} + \frac{1}{6} =$$

Adding Fractions

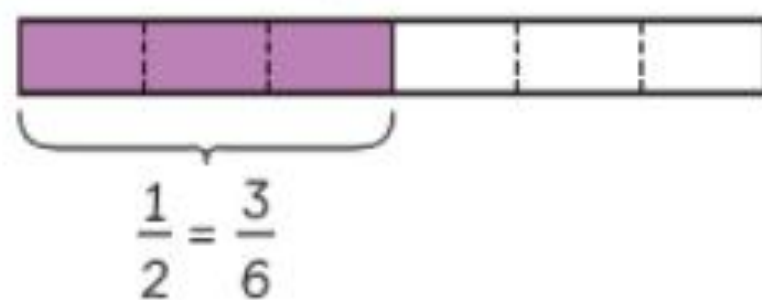
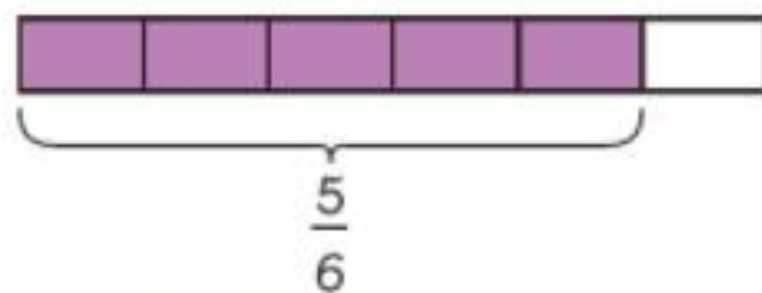
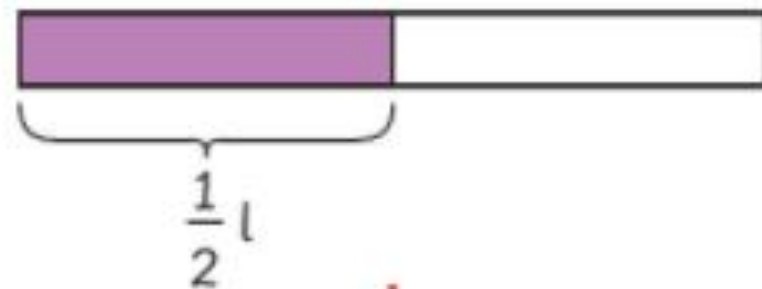
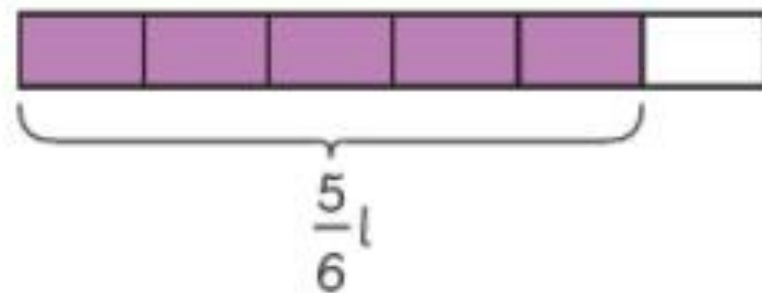
Lesson
11

In Focus

There is $\frac{1}{2}$ litre more orange juice than mango juice.

Let's Learn

1 There is $\frac{5}{6}$ l of mango juice.



$$\frac{5}{6} + \frac{1}{2} = 1\frac{1}{3}$$



$$\frac{5}{6} + \frac{1}{2} = \square$$



We need both fractions to have the same denominator.

$$\begin{aligned} \frac{5}{6} + \frac{1}{2} \\ = \frac{5}{6} + \frac{3}{6} \end{aligned}$$

$$= \frac{8}{6}$$

$$= 1\frac{2}{6}$$

$$= 1\frac{1}{3}$$

This is an improper fraction.



Simplify.



$$\begin{aligned}
 2 \quad \frac{5}{6} + \frac{1}{2} &= \frac{\square}{6} + \frac{3}{6} \\
 &\quad \quad \quad \searrow \quad \swarrow \\
 &\quad \quad \quad \frac{\square}{6} \quad \frac{2}{6} \\
 &= 1 + \frac{2}{6} \\
 &= 1 + \frac{1}{3} \\
 &= 1\frac{1}{3}
 \end{aligned}$$

Guided Practice

- 1 Find the sum of $\frac{3}{5}$ and $\frac{9}{10}$.



Is it an improper fraction? Is it in its simplest form?

$$\begin{aligned}
 \frac{3}{5} + \frac{9}{10} \\
 = \frac{\square}{\square} + \frac{\square}{\square} \\
 = \frac{\square}{\square}
 \end{aligned}$$

$$\frac{3}{5} + \frac{9}{10} = \square$$

Are the denominators the same?



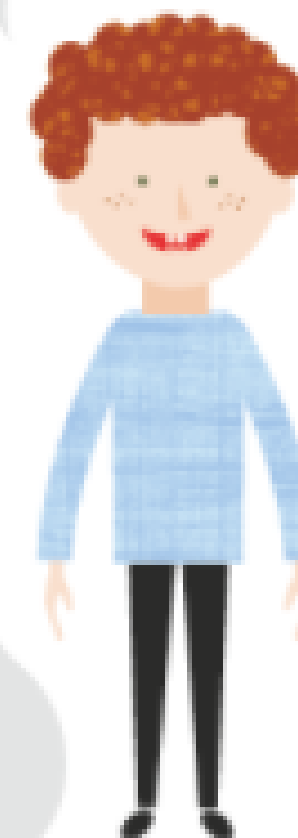
2

Add.

$$\frac{11}{12} + \frac{1}{4} = \square$$

$$\frac{11}{12} + \frac{1}{4} = \frac{\square}{\square} + \frac{\square}{\square}$$
$$= \frac{\square}{\square}$$

Is it a proper fraction?



Is it in its simplest form?

Worksheet 11

Adding Fractions

1 Add and give your answer as a mixed number in its simplest form.

(a) $\frac{3}{4} + \frac{11}{12} =$

(b) $\frac{7}{10} + \frac{4}{5} =$

(c) $\frac{11}{14} + \frac{5}{7} =$

(d) $\frac{11}{15} + \frac{2}{3} =$

2

Complete the additions.

a) $\frac{1}{5} + \frac{3}{10} + \frac{7}{20} =$

b) $\frac{1}{16} + \frac{5}{32} + \frac{3}{8} =$

c) $\frac{1}{4} + \frac{5}{24} + \frac{5}{12} =$

d) $\frac{3}{16} + \frac{1}{2} + \frac{1}{4} =$

e) $\frac{1}{2} + \frac{5}{18} + \frac{1}{9} =$

f) $\frac{1}{5} + \frac{8}{35} + \frac{2}{7} =$

Complete the calculations.

a) $1\frac{2}{5} + 2\frac{3}{10} =$

b) $2\frac{2}{5} + 2\frac{3}{10} =$

c) $1\frac{3}{4} + 3\frac{3}{20} =$

d) $1\frac{3}{16} + 4\frac{3}{4} =$

e) $4\frac{1}{4} + 2\frac{11}{16} =$

f) $1\frac{4}{15} + 3\frac{2}{3} =$