



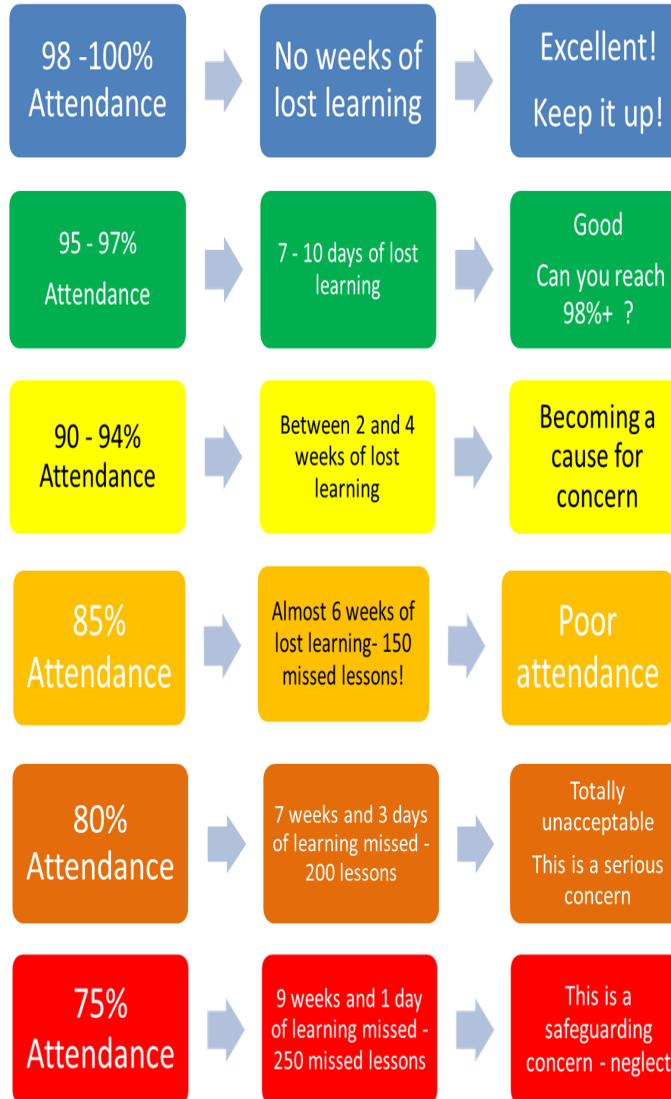
Look at the attendance awards that St Clare's have on offer!

- Bronze Awards.
- Silver Awards.
- Gold Awards.
- Over 95% achievement awards.
- A class award at the end of each term. The class with the highest attendance wins a movie afternoon with drinks and snacks.
- A chance to win book vouchers.

We have plans for more awards over the coming months.



## A guide to lost learning through absence



St Clare's  
Catholic Primary  
School



CHILD'S NAME:

CLASS:

YOUR CHILD'S ATTENDANCE IS:

SCHOOL ATTENDANCE TARGET IS:

95%

# Improving Attendance at St Clare's Catholic Primary School

## Every day at St Clare's Primary School Counts!

At St Clare's Primary School we are continually striving to do the best for your child and to improve the progress and attainment of all our pupils. We firmly believe that this can be achieved by regular school attendance.

## Why is good attendance important?

Children who come to school regularly are more likely to:

- Achieve good standards of work
- Get on well with other children and have good friendships
- Continue to do well when they transfer to secondary school
- Develop positive attitudes towards work, which will help them in their lives.

## Children who are regularly absent are more likely to:

- Make less progress
- Fall behind in their work
- Find it difficult to make and keep friends
- Be unhappy in school
- Become disengaged
- Get involved in anti-social behaviour

## Of course some absences are unavoidable.

If your child is genuinely ill, then we understand that s/he needs to stay away from school. We would ask you to telephone the school on 01274 637841 on the first day your child is unable to attend.



We know that parents / carers want the best for their children and regular attendance at school is an important part of helping your child to achieve.

## What can you do to help?

- Ensure children attend school every day and arrive on time
- Only take holidays or trips to visit family in school holidays
- Make medical and dental appointments before or after school or in the school holidays
- Inform school of any absences by telephoning school on the first day your child cannot attend school
- Contact us immediately if there are any problems that you feel may affect school attendance so that we can seek a solution and support your child effectively.



## Every minute counts!



Not only is attending school regularly important, ensuring your child arrives to school on time is also important.

- Children should arrive in school at 8.50am in time for registration at 8.55 am
- If your child arrives after the register has been taken they will be marked as 'late'. If your child arrives late regularly, we may ask you to attend school for a meeting to discuss the reasons why.
- Children who regularly arrive late miss important learning time which can affect their progress and achievement.

## SATS — Standard Assessment Tests

Every year group at St Clare's Catholic Primary School is important but years 1, 2 and 6 are particularly so because these are the years that the children are tested in Phonics, English and Maths. These are statutory tests sent to school by the Department for Education. These tests give an indication as to how well your child is doing at school compared to national expectations. Good attendance helps them to achieve well in their tests.

**Attendance Number**

**(open 24 hours)**

**01274 637841**