

## Accessing the School Network from Home

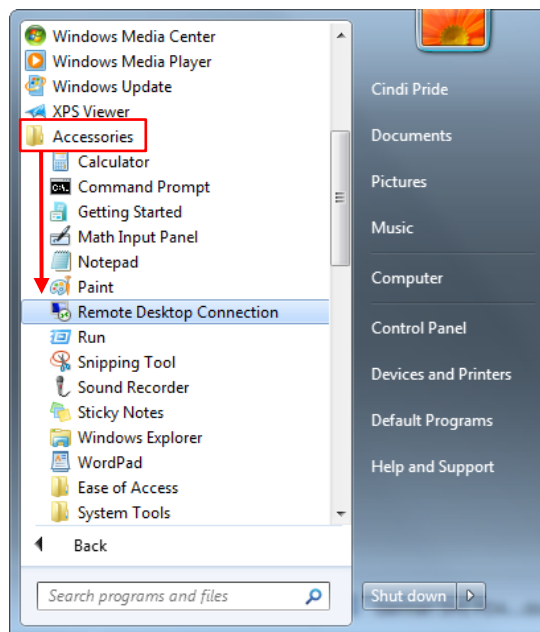
Before you start your 'remote' session on the school network you must connect your home computer to the Internet in the normal way!

If you are using a Mac: you must download "Microsoft Remote Desktop" from the Mac App Store and use this in place of Remote Desktop Connection below.

<https://itunes.apple.com/gb/app/microsoft-remote-desktop/id715768417?mt=12>

To connect to the school network using Remote Desktop Connection:

Go to: Start > Programs > Accessories > (Communications) > Remote Desktop Connection (see the end of this document for creating a desktop shortcut).

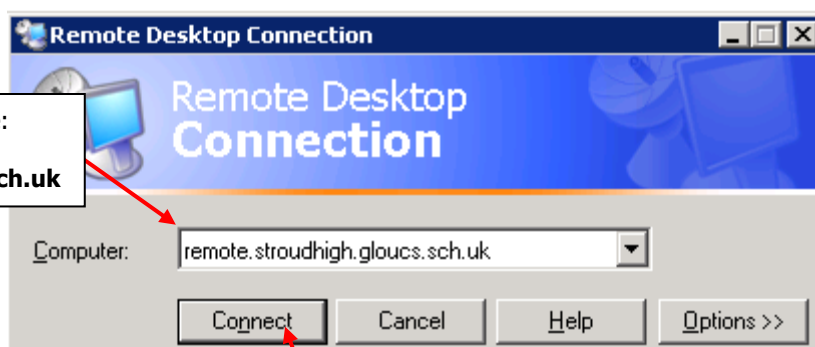


For Windows 8 or above, simply type 'Remote Desktop Connection' in the Search box or Go to 'Apps'



1 In the 'Computer' box type:

**remote.stroudhigh.gloucs.sch.uk**



2 Click on the 'Connect'

This will take you to a login screen, you now need to enter your school username and password but you must make sure that you add **SCHOOL\** to your username:



At this point you are no longer using 'your' computer, except for the keyboard and mouse, you are literally working 'at school' on the server, and just your mouse clicks and keyboard presses are being sent over the Internet.

**Warning:** You will be limited by your connection speed, so if you are trying to copy a large file over a slow internet connection it could be very slow.

**At the end of a session logoff in the same way that you would in school when you have finished. (Start > Logoff)**

If you wish to have a shortcut to Remote Desktop Connection on you're the desktop of your home computer:

1. Locate it as shown above (**Start > Programs > Accessories > Communications > Remote Desktop Connection**)
2. Holding down the RIGHT hand mouse button, drag it out onto your desktop and let go
3. From the menu that appears choose 'Copy Here' – and hey presto! a shortcut.

