



# KSI Phonics Screening Check



January 2024



Love



Unity



Courage



Inspiration

Bishop Aldhelm's CE Primary School



# What is phonics?

- Children are taught to read by breaking down words into separate sounds or 'phonemes'. They are then taught how to blend these sounds together to read the whole word.
- Children have a 30-40 minute phonics lesson daily, and they are encouraged to use these strategies to read and write in other lessons.
- The DfE validated phonics programme we use at BAPs is Essential Letters and Sounds.

**ELS**  
Essential Letters  
and Sounds



Love



Unity



Courage



Inspiration

**Bishop Aldhelm's CE Primary School**



# ELS- Essential Letters and Sounds

- This is a simple, consistent approach to teaching phonics.
- Your child will experience the same classroom routines within each lesson which reduces cognitive load and maximises the chances of success.
- All children are supported within the lesson to use their new phonic knowledge independently.
- In every single ELS lesson, your child will make the direct application to reading.



Love



Unity



Courage



Inspiration



Bishop Aldhelm's CE Primary School



# Terms we use in phonics

**Phoneme-** The smallest single identifiable sound in a word. E.g. in the word 'cat' there are 3 phonemes c/a/t. In the word 'fish' there are also 3 phonemes f/i/sh.

**Grapheme-** the written representation of the sound.

**Digraph-** two letters making one sound. E.g. /sh/ in the word 'shop'.

**Trigraph-** three letters making one sound. E.g. /igh/ in the word 'night'.

**Split Digraph-** two vowel letters split by one or more consonants. E.g. /a-e/ in the word 'cake'.

**Sound talk-** Using robot arms to blend sounds together. (This is only used for oral blending and when writing words- NOT when reading.)



Love



Unity



Courage



Inspiration

Bishop Aldhelm's CE Primary School

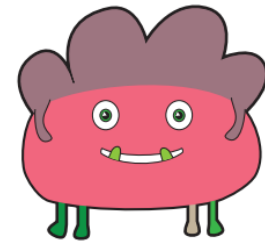




# KSI Phonics Screening Check

The Year 1 phonics screening check is not a formal test, but a way for teachers to ensure that children are making sufficient progress with their phonics skills to read words and that they are on track to become fluent readers who can enjoy reading for pleasure and for learning.

glips



Love



Unity



Courage



Inspiration

Bishop Aldhelm's CE Primary School



## What is the year 1 Phonic screening check?

- Since June 2012, the phonics screening check has been taken individually by all children in Year 1 in England (this was slightly different in the times of Covid when the test was taken at a different time).
- It is designed to give teachers and parents information on how your child is progressing in phonics.
- Although we will already know if your child requires additional support with their phonics, the screener will help to identify specific gaps and will ensure the correct support is in place for the remainder of year 1 and as your child moves into year 2.



Love



Unity



Courage



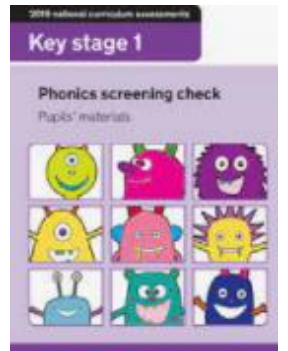
Inspiration

**Bishop Aldhelm's CE Primary School**



## How is the Phonic Screen Check completed?

- There will be two sections in this 40-word check and it will assess phonics skills and knowledge learned through Foundation and Year 1. Your child will read up to four words per page for their teacher and they will probably do the check in one sitting of any where between 5-15 minutes.
- It is not a stressful situation and the children are very used to working with their teacher and using these skills.



Love



Unity



Courage



Inspiration

Bishop Aldhelm's CE Primary School



# What does it check?

It will check that your child can:

- Sound out and blend graphemes in order to read simple words.
- Read phonetically decodable one-syllable and two-syllable words, e.g. cat, sand, windmill.
- Read a selection of nonsense words which are referred to as pseudo words. ('alien words')

at

vap



Love



Unity



Courage



Inspiration

Bishop Aldhelm's CE Primary School





## What are nonsense, pseudo or alien words and why are they included?

- These are words that are phonetically decodable but are not actual words with an associated meaning e.g. brip, snorb. Pseudo words are included in the check specifically to assess whether your child can decode a word using phonics skills and not their memory.

beg

sum

osk



ect



Love



Unity



Courage



Inspiration

Bishop Aldhelm's CE Primary School



# Is there a pass mark?

- We do not know the pass mark for 2024 until after the tests are submitted. The pass mark has usually been 32 out of 40. However, if children do not get this mark, there is no need to panic!
- Children progress at different speeds. If your child doesn't get the required pass mark, they will re-sit the check the following summer term, in Year 2.
- All children who require a bit more time, support and resources to learn how to read effectively will receive this and you will be fully aware of any additional support your child is receiving in school.



Love



Unity



Courage



Inspiration

**Bishop Aldhelm's CE Primary School**



# When is the phonic screening test take place?

- The screening will take place throughout the week beginning Monday 10<sup>th</sup> June 2024. The children cannot retake the test at any other time so it is very important your child is in school during this week.

JUNE 2023						
Sun	Mon	Tue	Wed	Thu	Fri	Sat
28	29	30	31	1	2	3
4	5	6	7	8	9	10
11	12	13	14	15	16	17
18	19	20	21	22	23	24
25	26	27	28	29	30	1

Free Printable Calendars from Typecalendar.com



Love



Unity



Courage



Inspiration

Bishop Aldhelm's CE Primary School



# How can I help?

Use pure sounds when you are pronouncing the sounds and supporting children in reading words. This means no 'uh' after a sound. This is known as 'schwaring'.

<https://www.youtube.com/watch?reload=9&v=UCI2mu7URBc>



Love



Unity



Courage



Inspiration

Bishop Aldhelm's CE Primary School





# How can I help?

The books which are sent home with your child are books they can read. It is a celebration of what they can read and will in turn help their fluency. Phonics is not the only thing needed to become a fluent reader, which is our main aim.

Please continue to read with your child at least 3x time as week, if not every night and encourage them to:

- Use their sound knowledge.
- Track the text.
- **Re-read** to check it makes sense.
- Use pictures for clues.
- Ask questions about the book.
- And most importantly ENJOY READING! (Bedtime stories, seeing yourself read and enjoy reading, visits to the library to develop a taste for reading.)
- Please sign the relevant week in the pupil planners when you have read with your child. We check these weekly to celebrate children for reading at home.



Love



Unity



Courage



Inspiration

Bishop Aldhelm's CE Primary School



# How can I help?

We are continually assessing sound knowledge throughout the lessons and through more formal assessments. This way we can address gaps quickly and consolidate unknown sounds.

Following our recent assessments, we will send a list of sounds that your child is working on, in order for you to further support them at home. This could be by spotting the sound in books that you are reading, using lots of sound talk, making and reading words with those particular sounds in or practicing on the 'Phonics Play' website.



Love



Unity



Courage



Inspiration

**Bishop Aldhelm's CE Primary School**



# How can I help?

When spelling words, we have a certain sequence of steps that we have taught the children to follow.

For example, if we wanted to write 'beach'.

- First we would say the word into our hands.
- Then we would strrrreeetchhhhhh the word. "beeeeaaaaachhhhhh"
- Next we use robot arms to sound out the word "b-ea-ch". Then we use our blending hands to blend the word together "beach". (We do not do this when reading words, only spelling)
- After that, we count the number of sounds on our fingers, e.g. 3 sounds in beach so three fingers, and say the word again.



Love



Unity



Courage



Inspiration



Bishop Aldhelm's CE Primary School



# Any questions?

- If you have any questions, please do ask.



Love



Unity



Courage



Inspiration

Bishop Aldhelm's CE Primary School