

Shining Brighter and Brighter



New to Nursery September 2023

St Mary's C of E VA Primary School

Agenda

- ▶ Meet the Team
- ▶ Our Morning in Nursery
- ▶ Timings
- ▶ Uniform
- ▶ Communication
- ▶ Teaching & Learning
- ▶ The Forest
- ▶ Visitors
- ▶ Parents
- ▶ Questions

The Team

Nursery

- ▶ Mrs Bishop - Nursery Teacher (Monday to Friday morning)
- ▶ Miss Davies- TA Nursery (Monday to Friday morning)

Reception:

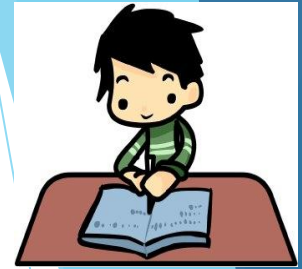
- ▶ Mr O'Mara - Reception Teacher (Monday to Friday)
- ▶ Mrs Hawkes - Reception Teacher (Friday)
- ▶ Mrs Chamberlain - TA Reception
- ▶ Mrs Grech - MSA & Volunteer

Our Morning

- Self-Registration
- Time to settle in
- Circle Time with singing (phonics/maths)
- Child Initiated Learning
- Snack Time (Please sign up for milk)
- Story Time

Timetables are produced each term with a Curriculum Leaflet each half term- available on the school website/Tapestry.

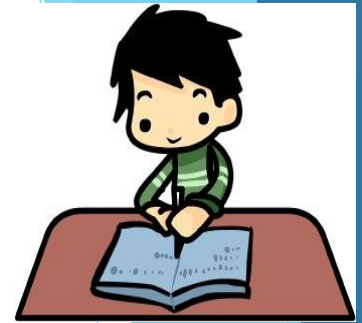
Timings



- ▶ Nursery start at 8.45am but we will continue with a soft start 8.40 to 8.50am.
- ▶ If you are late, please enter via the school office.
- ▶ Nursery finish at 11.45am and exit from the first set of double gates.
- ▶ Please inform us of any different collection arrangements in advance or via the office. Passwords are required.
- ▶ Lunch club starts at 11.45-12.30pm and is managed by Pre-school Staff who have their own email and contact details
stmaryspreschool.northchurch@gmail.com or 07535184017

Timings

Wraparound Care



- ▶ Breakfast club - 7.45 to 8.45am (Contact school office)
- ▶ Lunch club - 11.45 to 12.30pm (Contact Pre-School)
- ▶ Pre-school - 12.30 to 3.30pm
- ▶ After school club - End of school day to 6pm (Contact school office)

Uniform Reminders

- ▶ Named uniform (no plimsolls)
- ▶ Named coat or waterproof
- ▶ Named book bags (taken home daily)
- ▶ **Keep** a pair of named wellies at school
- ▶ Spare change of clothes (named bag - doesn't need to be uniform)
- ▶ Named water bottles (taken home daily)
- ▶ Forest School waterproof trousers

- ▶ We will teach the children to look after their belongings at school and to be responsible for them.

Communication

Latest Information

- School Website and Class Page
- School Emails & Newsletters & Curriculum Letters
- Tapestry
- Class Reps - Miss Emery & Miss Legg

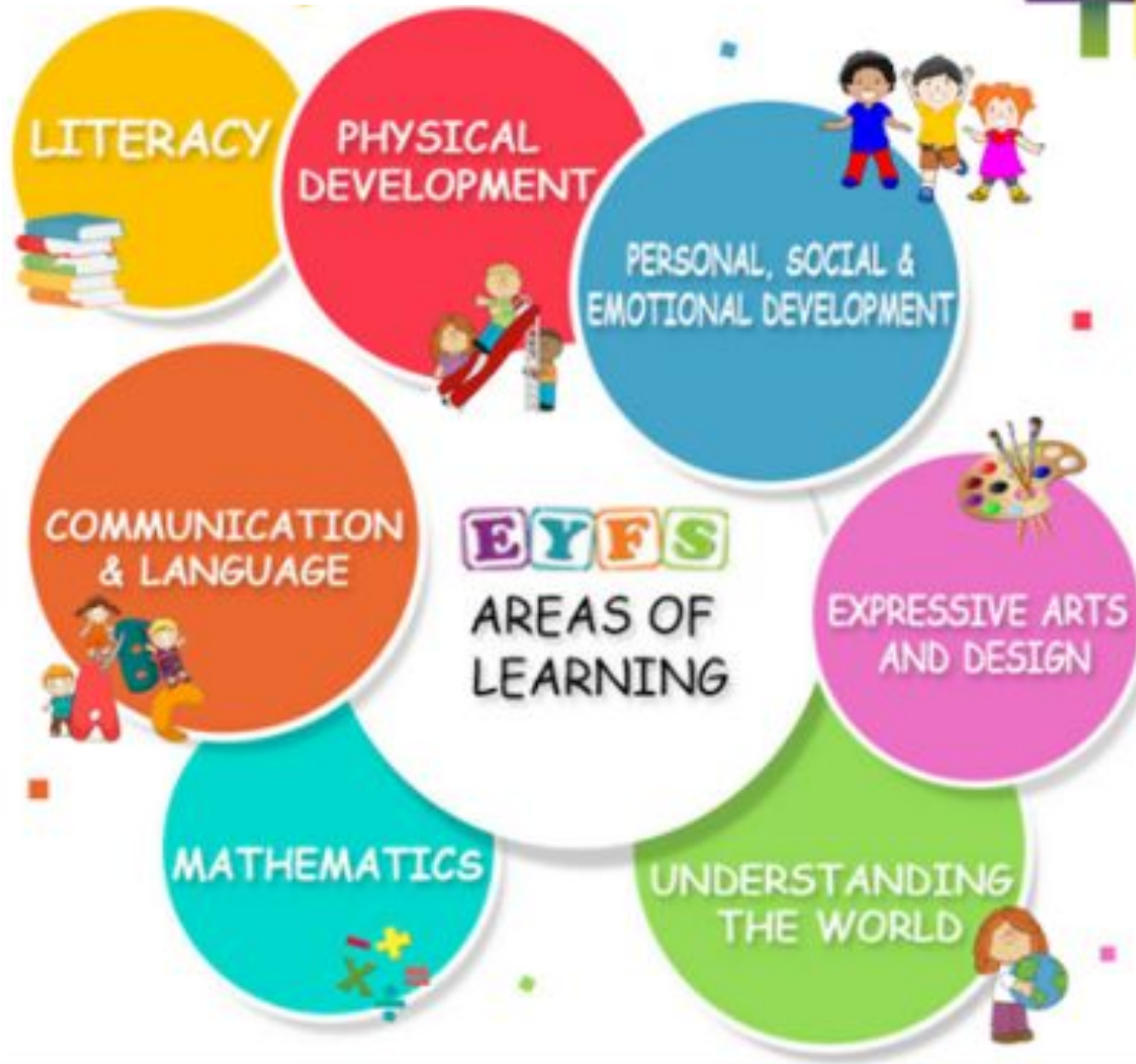
Contact for absence/collection arrangements

- Email and/or phone the school office

Contact Mrs Bishop

- Class email address: nursery@stmarys916.herts.sch.uk
- Parents evening twice a year
- End of year report

Teaching & Learning



Forest School

- ▶ Nursery have weekly visits.
- ▶ Fantastic opportunity to explore the world first hand but also outdoor learning for all the subjects.
- ▶ We go out in all weathers, so we need named spare clothes, wellies, raincoats in school always.
- ▶ Waterproof trousers are ideal!



Visitors

- ▶ Rector Jonathan visits us weekly to read us a story.
- ▶ We also visit the church for Christian celebrations.
- ▶ We welcome visitors to share other religions festivals with us.



Parents

- ▶ We are looking for parent volunteers in school. In Nursery we are grateful for help when visiting the Forest (Mondays) and looking after the Guinea Pigs.
- ▶ Occasionally for school trips/visits.
- ▶ To share knowledge with the children e.g. occupations and/or cultural knowledge.
- ▶ Class Reps help to rota events e.g. Guinea Pigs, Forest Helper.
- ▶ DBS check may be required for some volunteering roles.

Parent Forum

- ▶ Parent Coffee Mornings will be held with Mrs Osborne every term.

Getting Ready for School

- ▶ Herts have lots of ideas for things to do over the holidays and help your child to get ready for school.



Practise putting your school shoes on and try wearing them for a day



Practise washing your hands with soap, independently



Practise taking your coat off and putting it back on



Practise opening their lunch box



Practise going to the toilet independently

September....

- ▶ We are looking forward to welcoming your children into the Foundation stage at St Mary's.
- ▶ Tuesday 5th September at 8.45-10am for children already at St. Mary's Preschool.
- ▶ Wednesday 6th September 8.45-10am for children new to St.Mary's and have not attended St. Mary's Preschool yet.
- ▶ Thursday 7th September all children 8.45-10.30am all children.
- ▶ Friday 8th September usual hours of 8.45am-11.45am for all children.
- ▶ Any questions, please ask!
- ▶ Intimate Care Paperwork