



PARENTAL NEWS BULLETIN

Issue 23 Monday 13th March 2023

HEADLINE NOTICES

Staff INSET Day - Monday 13th March 2023 & Activities Week

A Staff Development Day on Promoting Anti-Racism within the school environment further takes place on **Monday 13th March 2023**. On this day, the school will be closed to students in all year groups; although students in Years 11 and 13 may attend school for classes from 1pm as arranged in advance. Year 7 examinations scheduled for this day have been rescheduled. On **Tuesday 14th March 2023**, students in Years 8, 9, 10 and 12 will engage in a series of follow-up workshops on the key areas covered in the INSET day including anti-racism and our Freedom of Speech Code of Conduct as well as other cross-curricular themes such as careers, well-being and e-safety. Please see the email notification sent separately to parents, for further details about the reorganization of lessons during this special Activities Week.

Arrangements for Wednesday 15th & Thursday 16th March 2023

You may be aware from ongoing media coverage that a major national teachers' union have confirmed further strike action which will adversely affect schools in London on Wednesday 15th & Thursday 16th March 2023. The strikes continue to happen because of a national dispute between teacher unions and the government. Our priority is to ensure that any disruption is minimised for students, especially those who are taking external examinations in Summer 2023. Years 7, 11 & 13 may be required to attend school on both Wednesday 15th & Thursday 16th March and Year 7 examinations will take place as planned. Students in Years 8, 9, 10 & 12 will be required to access online learning from home via the MS Teams platform.

Should you wish your child to attend school on these days, please complete the online request form [here](#). Further details have been issued separately. We are continuing to work collaboratively with our staff union representatives to keep up to date with the situation and parents will be informed as soon as possible if arrangements change further or the strike is cancelled. Thank you in advance for your ongoing support and understanding.

Red Nose Day 2023!

On Friday 17th March, we shall be celebrating Red Nose Day at Kingsdale. On this day, students are permitted to wear one item of red clothing, in support of this good cause, in return for a donation of £1 to Comic Relief. Kingsdale Foundation School and the House System are proud to support Comic Relief 2023!

THEME & WORD OF THE WEEK

Ambition – "Keep away from people who try to belittle your ambitions. Small people always do that, but the great make you feel that you, too, can become great."

Speculation

The forming of a theory or conjecture without firm evidence.

SCHOOL NEWS

Proposed Adoption of the HALO School Uniform Code

As part of our ongoing and focused work regarding the important areas of equality and diversity, we are consulting with our students on the incorporation of the HALO Code within our published uniform policy. The HALO code is a set of principles within a school's approach to uniform which seeks to remove any inbuilt discrimination against specific cultural hairstyles. You can find out more information regarding the HALO Code [here](#).

We shall be continuing to discuss our intended implementation of the code at the school with our students through our usual forums, as well as through our Equalities and Diversity Student Working Group. Further information will be published here and issued separately.

Should you wish to discuss the school's intended approach in this area, please contact Mr Harding, via dhg@kingsdale.southwark.sch.uk

Curriculum Coffee Morning

A reminder that the last of the curriculum coffee mornings for this term is running on

**Friday 17th March 2023 for Year 9
11am - 1pm in the Conference Room**

This term we are focusing specifically on Science. Other subjects will follow on a rotational basis. Year 9 parents can book a space at this event through the online form [here](#).

SCHOOL NEWS cont.

Year 7 Arthur Driver represents Bromley at National Arena League Finals

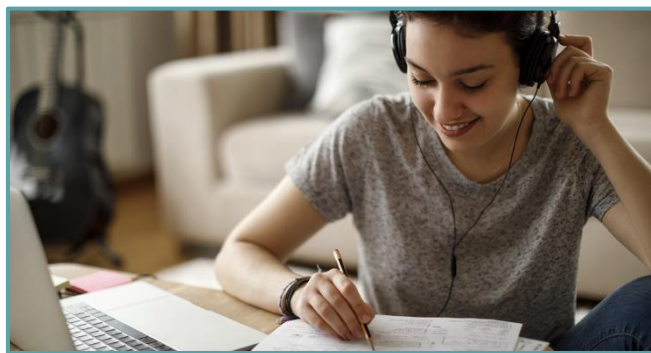


Massive congratulations to Arthur Driver in Year 7 who represented Bromley Swimming Club in the National Arena League Finals in Cardiff last weekend. Arthur competed in 50m Breaststroke in the Under-12s category and won his race, which was a fantastic achievement. Well done to Arthur and the rest of the team. We hope to see more success in the future!

UCAS

Year 12 Trip to Discovery UCAS Exhibition at the ExCeL Centre

All Year 12 students will attend the UCAS Discovery Day on Monday 27th March 2023 at the ExCeL Centre, London from 12.30 to 3pm. The aim of the day is to give students the opportunity to investigate careers and university courses which may be of interest to them and support their further education ambitions moving forward. Most major universities will be represented as well as a variety of companies offering exciting apprenticeship opportunities.



You can check the exhibitor list [here](#). Further details have been circulated to all Year 12s and their parents separately. Please address any queries to Ms Tarajia via year12hol@kingsdale.southwark.sch.uk

MATHS NEWS

Year 7 Mathematics Scholarship Spring Programme

TIME: 15.50 – 16.35

15 TH MARCH 2023	YEAR 7 EXAM WEEK	YEAR 7 EXAM WEEK	YEAR 7 EXAM WEEK
22 ND MARCH 2023	Early school closure	Early school closure	Early school closure
29 TH MARCH 2023	FRANKFURT TRIP	FRANKFURT TRIP	FRANKFURT TRIP

Year 8 Mathematics Scholarship Spring Programme

TIME: 16.20 – 17.05

22 ND MARCH 2023	Early school closure	Early school closure	Early school closure
29 TH MARCH 2023	YEAR 8C & 8D	MS MILES & MR JAMES	MA6 & MA8

Year 9 Mathematics Scholarship Spring Programme

TIME: 13.10 – 13.40

17 TH MARCH 2023	YEAR 9A & 9B	MS DAVIS & MRS DEVA	AR3 & AR4
24 TH MARCH 2023	YEAR 9A & 9B	MS DAVIS & MRS DEVA	AR3 & AR4

SSLP Photography Competition

In the last round of the SSLP Photography Competition, our very own Year 11 student, **Tess Perkins**, won a Runner-Up place with the theme 'Natural Worlds'. The judge of this round was Alice Cazenave, a London-based photographer and researcher working in plant-based photographic processes, who said of Tess' image, "I like that this photographer has looked to the ground to see this upside-down world."



SSLP Photography Competition



The [Photography Competition](#) is **open** to **all staff and students** at all SSLP schools. Anyone interested in being notified about winners and each new round in the competition should [register now](#).

The third round is **Motion & Distortion** and can be [entered here](#).

Motion & Distortion

This is the third round of the [SSLP Photography Competition 2023](#). This month we are looking for pictures that capture motion or show how camera angles can cause distortion. Your images should capture the sense of movement, activity and noise.

Use your imagination, camera settings and, if you wish, editing software to create an image that captures more than just one moment in time.

Deadline for entries
Friday 31st March

ART & DT NEWS

To see more of the brilliant Art, Textiles, Photography, Graphics and Textiles work by our students, as well as Art alumni, please follow us on Instagram [@kingsdaleart](#) - [@kingsdaledandt](#) - [@kingsdalefoodscience](#) (age restrictions apply)

Sixth Form Art, Textiles and Photography Trip to Berlin

On 2nd March our Year 12 and 13 Art, Textiles and Photography students met for a 2.15am start to take a coach to Heathrow and fly to Berlin. We stayed in the Kreuzberg area and were able to explore many sights on foot, starting with a historical visit to Checkpoint Charlie and the Topography of Terror Museum. From there we went on to visit the wonderful Neue National Galerie to view the extensive collection of Modern Art there in it's amazing architectural space.

On Day 2 we were privileged to view the incredible contemporary Art at the Boros Collection.

Students and staff were given a tour that not only taught us about the art on display, but the history of the bunker itself and how it has now become the home for this wonderful private collection. We also braved the cold and viewed the East Side Gallery with the famous murals on the remains of the Berlin wall.

In the afternoon we took the train out to Potsdam and visited the beautiful Barberini Gallery and were given tours of the current exhibition, 'Sun. The Source of Light in Art'.



On Day 3, we headed to the Helmut Newton Foundation and were hugely inspired by the exhibition about his life and prolific catalogue of work, especially his fashion and advertising work. After lunch we visited the contemporary Hamburger Bahnhof Gallery and were able to interact with the exhibition around sound and music, as well as a brilliant installation, video and performance piece by Zineb Sedira. The weather was in our favour as we were treated to a stunning sunset over the Brandenburg Gate and then a thought-provoking visit to the Memorial to the Murdered Jews of Europe. After a delicious German dinner, we strolled along the bank of the River Spree to the monumental Berlin Cathedral. On Sunday we had a brilliant morning scouring the Mauerpark Flea Market for bargains before heading back to Berlin Brandenburg Airport to end our adventure. We are so impressed and proud of our students for all their enthusiasm and engagement with the galleries and Berlin itself. They have all come back fully inspired and ready to move on with their A Level projects. For more photos, please see our Instagram [@kingsdaleart](#) (age restrictions apply).





Would you like to see your work on display at the Royal Academy of Arts?

Here is an amazing opportunity to enter the Young Artists' Summer Show 2023.

Unfortunately, we can't enter 'live' GCSE and A Level work but go online for details or speak to an Art teacher.

More information is also on our Instagram **@kingsdaleart** (*age restrictions apply*).

Guidance for submissions

The Young Artists' Summer Show is a great opportunity to engage creatively with young people, offering them the chance to make and share a piece of artwork that truly expresses their own voice. There is no theme and we accept artworks of any kind. A drawing, painting, print, photograph, sculpture, textile piece, video, performance piece, or surprise us!

Judges are looking for imagination, originality and skill. Although many great artists 'copy' in creative ways, artworks that closely reproduce another artist's work or ideas won't be selected.

Each submission can include a short written statement, written by the artist themselves (if possible) and can include why they created the work and what it means to them.

A good image of the artwork is very important and could influence the way that the artwork is viewed by the judges. Read our 'How to photograph your artwork' document for some helpful tips and tricks.

Teachers, if you intend to submit artwork for each student in your class, we advise against submitting works that are visually similar.

Supporting young artists to create and submit original artworks is an achievement and something worth celebrating, even if their work isn't selected. We enjoy seeing each and every artwork that is sent and can't wait to see what is submitted this year!

If you would like further support submitting artwork, please contact us at

YASS@royalacademy.org.uk

SCHOOL NEWS

Safe Travel to School

At school, we have shared the key messages about keeping safe with the students. Some of the key messages are outlined below:

“LOOK UP LOOK OUT”

- **BE AWARE** of your surroundings.
- **BE AWARE** when using your mobile phone.
- Know your route home.
- Keep to busy roads.
- Try to be with other people.
- If someone tries to stop you keep walking.
- **SHOUT** for help and make **NOISE**.
- If anything happens speak to a trusted adult as soon as you can.
- **RUN HIDE TELL**.
- There is no right or wrong response as each situation is different but remember that **YOUR SAFETY IS PARAMOUNT**.
Only **YOU** can assess the risk.
- Possessions are replaceable, but **you are not**.

Your child must contact the Police immediately on 999 if they are concerned about their safety or if they are the victim of a mugging/attempted mugging.

Students and Parents should also inform the school so that we can offer pastoral support and liaise with our Safer Schools Officer – PC Crampton.

Please contact Mr Harding via dhg@kingsdale.southwark.sch.uk with any queries.



SCHOOL NEWS

Kingsdale is a Safe Space

We would like to take this opportunity to once again remind students and their families of our two confidential emails which are operational both during and outside of school hours.

This provision is available for any member of our school community wishing to seek advice, discuss any matters relating to mental health & well-being or report an incident or concern confidentially via email.

We appreciate that students, parents, carers or guardians may wish to speak to someone outside of school hours or may wish to disclose an incident or concern confidentially or anonymously.

Our two confidential emails are:

health&wellbeing@kingsdale.southwark.sch.uk
tellsomeone@kingsdale.southwark.sch.uk

Please contact **Ms V Turner** for further information regarding this provision or any matters relating to mental health & well-being at Kingsdale School.



MY PHONE



KEEPING YOU AND YOUR PHONE SAFE

Getting a phone is really exciting. You can stay in touch with friends and find out more about the world.

Don't fight back, it's not worth the risk when a phone can be replaced.

- Tell us if someone robs you or tries to. It's important you get help straight away by dialling **999** using a friend or trusted adult's phone rather than contacting police when you get home. This gives us the best chance to catch the suspects, recover stolen items and make sure you're safe.

- If you don't want to talk to police – contact Fearless online, without giving your name, at www.fearless.org
- Memorise or keep a note of a parent/carer's phone number in a separate place in case of emergency.

As police officers, our job is to keep you safe and stop people who want to steal property like phones, cash, earphones and even expensive coats or trainers.

You can help us do that by being careful where you use your phone and taking care of cash and other valuable items.

YOU CAN HELP US PROTECT AND TRACK YOUR PHONE IF IT'S STOLEN.

HERE'S 3 THINGS YOU CAN DO:

- Your phone will have security features such as a passcode or fingerprint/face ID. Make sure you use it to protect access to your phone.

5 TIPS TO KEEP SAFE

- Keep your phone and valuables out of sight and in a safe place. Take care when you take them out especially near bus stops and train stations.
- Stay alert and remember earphones/headphones can distract you from being aware of someone approaching from behind you. Thieves can approach on mopeds, e-scooters and pedal cycles.
- Tracker apps can help locate your phone if it's lost or stolen. Ask a parent to show you how to set one up.
- Record the phone's IMEI number in a separate place at home. Find this by typing in ***#06#**. You'll need to give this number to police if it's stolen.

For more information go to www.fearless.org/campaigns/robbery

Reading Recommendations



Teacher Recommendation
Since it was International Women's Day last Wednesday, Mr Read recommends *Becoming* by Michelle Obama

In her memoir, a work of deep reflection and mesmerizing storytelling, Michelle Obama invites readers into her world, chronicling the experiences that have

shaped her - from her childhood on the South Side of Chicago to her years as an executive balancing the demands of motherhood and work, to her time spent at the world's most famous address.

With unerring honesty and lively wit, Michelle Obama describes her triumphs and her disappointments, both public and private, telling her full story as she has lived it - in her own words and on her own terms.

Appropriate for students aged 12 years and over.



Student Recommendation
A student who wishes to remain anonymous recommends *Ariel* by Sylvia Plath.

This posthumously published last work by the celebrated poet contains some of her best-known poems such as 'Poppies', 'Daddy'

and 'Lady Lazarus'. The poems in the original 1965 edition of *Ariel* are characterised by free-flowing images and often have a menacing tone. Our mystery student fell in love with this book when she first read it and continues to regard it as an important beacon of feminism and lyricism!

Suitable for students aged 14 years and over.

Big History Club!

For Key Stage 3 and 4 in HU3
Every other Tuesday from 4.15pm to 4.45pm

Do you want to dive into the past?
Is there something we don't cover at school that you would like to learn about?

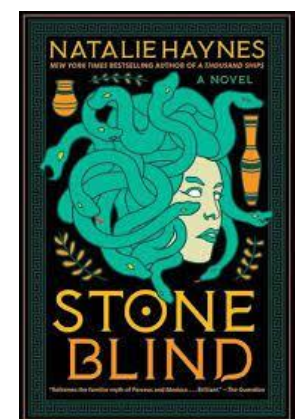
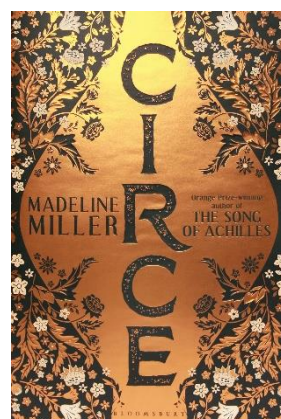
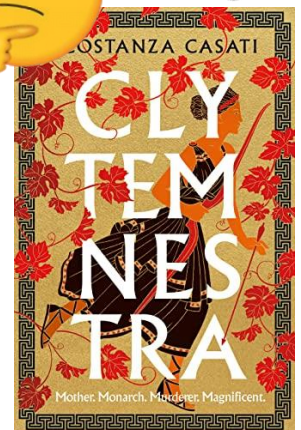
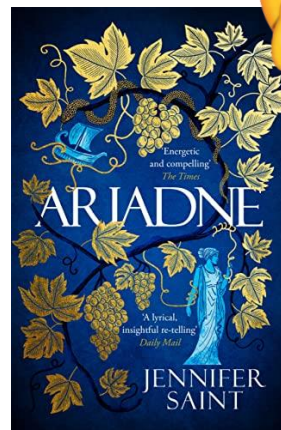
In Big History Club we use history and fiction books, films, art, music and more to **enquire into diverse World Histories** from ancient times to modern day.

In our next session on **Tuesday 14th March** we will be asking:

Why are so many Greek myths being rewritten?

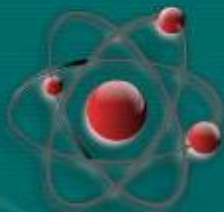
with Ms Preston, to mark Women's History Month.

Bring along any questions you have, and more ideas for people, events or items from history you want to know more about in future sessions!





Science homework😊



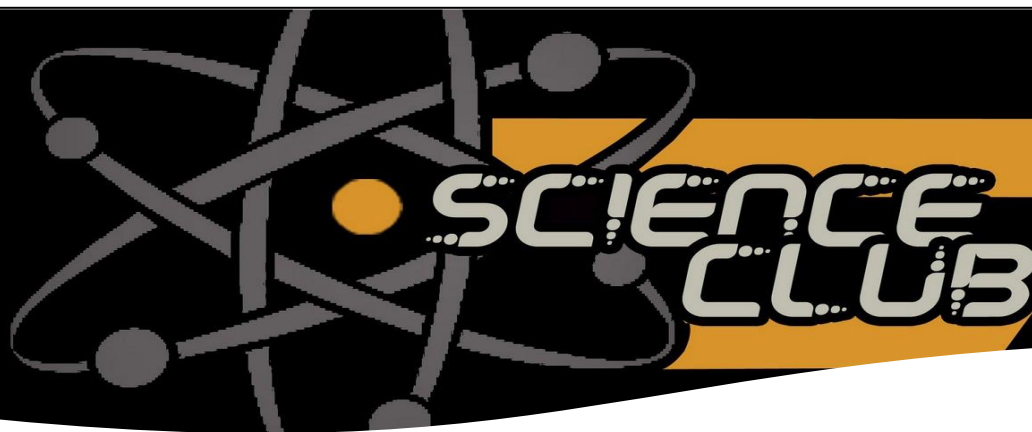
Are you struggling with Science Homework?

Have you missed any lessons or need help to boost your science knowledge?

We have opened a homework clinic for Year 7 students to catch up with any missing learning and any help they need with homework or preparing for their science tests.

Every **Monday** after school, at **3.45 pm** in **SC6**

First session Monday 20th February



Remember our **Science club** for Year 7 and Year 8, every **Wednesday** after school, starting at **3.45pm** in **SC8**.

Everyone welcome.



Some of the activities we have already completed:

- Square bubbles
- Swabbing cheek cells
- Density columns
- Making cheese
- Imploding cans
- Slime
- Making a compass
- Spaghetti & marshmallows structures
- Volcanos



Dyslexia SHOW2023

Dyslexia Show 2023
24th - 25th March

The UK's national exhibition dedicated to dyslexia and neurodiversity. Supporting education, parents, the workplace, and individuals.

Dyslexia Show 2023 is the event for everyone with dyslexia or neurodiversity as well as the people, businesses and organisations supporting and working with them.

Join and connect with the community, learn and be inspired by speakers in our seminar sessions and feature zones, and discover the latest in products, services and technologies from our exhibitors.

At the NEC Birmingham

- Register here: [Click](#)
- More information here: [Click](#)

Learning Support Faculty Coffee Mornings

We are pleased to announce we will be continuing with our parental coffee mornings this term. We will be giving parents of students with SEND the opportunity to come into school and engage with the faculty.

This will include receiving information about the extra academic support we are offering SEND students, the staff training we are providing, the use of our provision mapping programme 'Edukey', a focused 'Dyslexia Support for Parents' session and updates on our ongoing programmes.

Parents are asked to arrive at 8.50am on the allocated day at the main reception to give time to sign in for a 9.05am start.

Year 10

Thursday 23rd March
Period 1: 9.05-10.00

Please direct queries to
senco@kingsdale.southwark.sch.uk



Please send us anything you think other parents would find useful and we can either share it here or we could even publish it on our website!



Girls and SEND

As we celebrated **International Women's Day** last week (8th March) it is important to revisit and explore the challenges some girls with SEND or potential SEND face.

Multiple studies conclude that boys are invariably identified and diagnosed with SEND more than girls, for a variety of reasons. For each girl diagnosed with dyslexia, between 3 to 5 boys are diagnosed with the same condition; for children on the Autistic Spectrum, some studies suggest there are 4 times as many males to females every girl diagnosed there are 3 to 7 boys with an ADHD diagnosis.

This is an area of ongoing research and development, made more significant by the recognition that women and girls with disabilities stand the risk of facing even higher rates of gender, sexual and domestic violence compared to other women (WHO, 2020).

Case study records of over 200 dyslexics referred to a local specialist centre (1997) showed that girls were referred a year later than boys, and in a ratio of five boys to one girl and with more severe difficulties. More recent research on spelling and writing in 2007, 2017 and 2018 showed that the ratio of dyslexic boys to girls was three to two and there were a number of reasons for this. Dyslexia is considered an unexpected difficulty in learning to read and spell. Because girls are, on average, initially better at learning to read than boys their needs can be overlooked, and they miss out on extra support or recognition because their condition does not seem so severe.

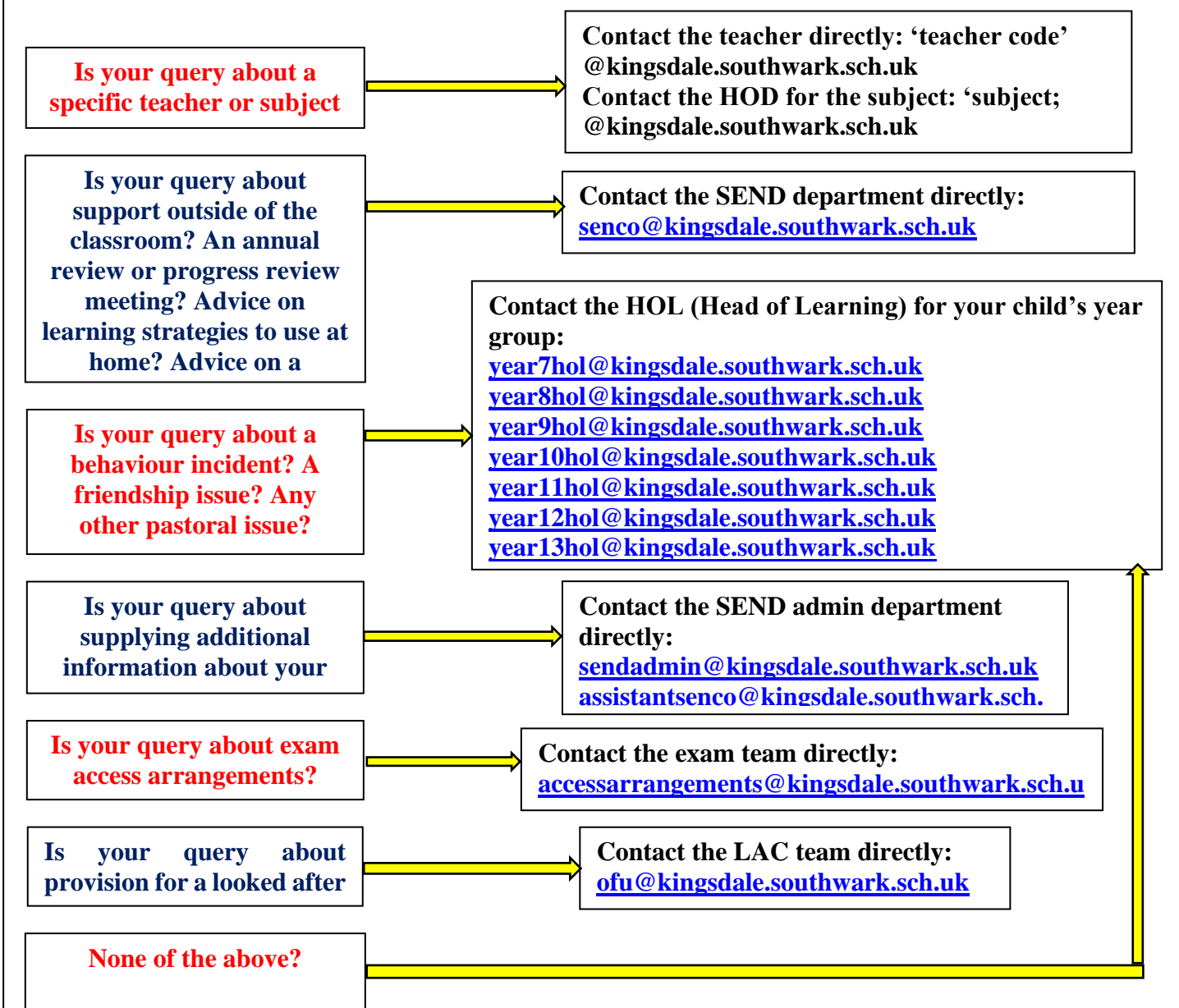
If you think your child (whatever their gender identification) may need some support at home, please see the helpful links below:

- ❖ [British Dyslexia Association: Guidance for Parents](#)
- ❖ [Child Mind Institute: What Every Autistic Girl Wishes Her Parents Knew](#)
- ❖ [Aspergers/Autism Network: Parents of Girls](#)

Communication Flowchart: SEND

At Kingsdale we would like our communication to be as effective as possible.

Please see the flowchart below to help us support your child effectively and get the information needed to the right people.



SEND FACULTY NEWS



Dyslexia Specialist Training Sessions

The Learning Support Faculty are continuing their association with the Dulwich Based Charity, Bell House, who have kindly offered some free places to upcoming talks on a first come first served basis.

There are 2 free places per week to attend the following sessions by Tina, Dyslexia specialist:

Developing & Supporting Numeracy Skills on Thursday 16th March 10.00am to 12.00noon

The code for free places is **FreeTicketKD**

SCHOOL NEWS cont.

School Marking Code & Quality Assurance

Parents are reminded that detailed information exists on our school website here, regarding the ways that students are assessed at Kingsdale, through the marking of classwork and assessments. Our approaches are also discussed throughout the year at scheduled Parents' Evenings and through curriculum information evenings (*details issued separately*).

Should you have any queries about the marking of your child's work at the school, or have any specific concerns about the frequency of marking in any subject for your child, please use our dedicated reporting email

checkmychildsmarking@kingsdale.southwark.sch.uk



Student Voice – Student Online Surveys

At KFS, we take the student voice very seriously. As such we routinely canvas our young people via confidential online surveys on a range of topics regarding their experiences at the school. The indicative schedule for such surveys for each academic year is below but will be supplemented by additional surveys as required:

Autumn Term: Safeguarding & Extra-Curricular Provision

Spring Term: Safeguarding, Assessment & Curriculum Provision

Summer Term: Safeguarding, Scholarships & School Support Services Please note each term, students are also required to rate and review the teaching they have received in each timetabled lesson as part of our quality assurance processes. Further details issued separately.

Lost Property

We are still receiving a large number of items that have been mislaid or lost by students. In many cases, these items are unlabelled, making it very hard for them to be quickly and successfully reunited with their owners!

Please can we ask parents to label all items of their children's property at school, including water bottles, blazers and coats.

Lost property queries can be directed to lostproperty@kingsdale.southwark.school.uk

Calling all Budding Student Journalists!

Kingsdale students have started their own school newspaper and are inviting fellow students to get involved!

If you're passionate about current affairs and would like to write reviews and news reports for the Kingsdale Telegraph, please get in touch!

Click image to open the latest edition!



Students should post their illustrations, reviews and articles (maximum 80 words for reviews and 100 words for articles) in the school newspaper contributions box, situated in the main office. Please include your full name and tutor group. Alternatively, they can email the team via

kingsdaletelegraph@kingsdale.southwark.sch.uk



SCHOOL NEWS

KFS Uniform Bank

We have many items of clothing to help supplement your uniform requirements (subject to availability).

Please note we do not stock ties or individual badges.

Prices:

**Blazer £6, Sweatshirt/Jumper £4
Skirt/Trousers £3 and all shirts £2**

Payment:

Please use appropriate combination of donation boxes (£6/4/3/2) on Parent Pay. Screen shot or download receipt. Come along at opening times to select items from the Uniform Bank.

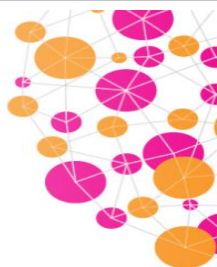
**Open: 3.45 – 4.45pm Mon/Wed/Fri
Staff: Mr Lewis and Ms Dalrymple**

The School Shop

A reminder that our School Shop is now open during the school day to enable students to purchase a range of useful items that they might need. This includes stationary and uniform items; all of which can be purchased using their school fob.

**LOST
PROPERTY**

10-19 March British Science Week 2023



Creativity is Intelligence Having Fun

The 10th to the 17th March is British Science Week, and to kick off the week, all Year 8 classes will carry out a range of science practicals and experiments to stretch their scientific knowledge.

Below are examples of practicals students will be carrying out. Practical will continue through the entire month of March.

1. Cooling curve with stearic acid
2. Purifying water
3. Squash Balls and Temperature
4. Hooke's Law
5. Huddling - Temperature change (stimulating a penguin huddle)
6. Limestone analysis
7. Meteor investigation
8. Woodlice - choice chambers
9. Pendulum
10. Energy in food

On Monday 27th March, some students will have the opportunity to take part in a workshop hosted by Energy Quest. Students will be engaging in experiments whilst learning about green energy and potential careers in green industries. Please email science@kingsdale.southwark.sch.uk for more information.

KEY DATES 2022-23



Monday 13th March

INSET DAY – School closed to students except for invited Year 7, 11 & 13s

Tuesday – Friday 14th to 17th March

Special Activities Week

Friday 31st March

End of Spring Term

Monday 3rd April – Friday 14th April

Easter Break

Monday 17th April

First Summer Half-Term

INSET DAY – School closed to students except for Year 11 students

For further information contact the Attendance Office:
info@kingsdale.southwark.sch.uk

HOUSE COMPETITIONS.

Kingsdale House Cooking Challenge: Mother's Day Bake



The modern Mother's Day, also known as Mothering Sunday, is an annual event which honours mothers and mother figures taking place on Sunday 19th March 2023 this year. Mother figures may include grandmas, aunties, sisters, carers or guardians. Show some love this Mother's Day with home-baked treats galore.

Click [here](#) for more information.

TASK:

Bake a cake, biscuits, pie or tart to make this day special. Send us a picture and a short description of how you made your sweet treat. The most creative dish will win valuable points for your house.

Don't forget permission from your parents or carers and have appropriate supervision in the kitchen.

HOUSE ACTIVITY:

Submit your picture and recipe to the House Team: housesystem@kingsdale.southwark.sch.uk
Ensure your entry is accompanied by your full

Student Suggestion Boxes

To promote our well-established and highly effective Student Voice programme, there are suggestion boxes, which are located outside of the Attendance Office in the Main Atrium and The Office of The Headteacher at the bottom of the Green Stairs. Please encourage your child to use this facility to make suggestions about how we can continue to improve our provision.



What Parents & Carers Need to Know about iPADS

Apple debuted the first iPad in 2010, kickstarting the tablet market, and it remains the best-selling tablet to this day. Although Apple doesn't offer a child-specific version, iPads are hugely popular with youngsters due to their ease of use and endless choice of apps. There's a selection of models, with different-sized screens and distinct features – including the standard iPad; the iPad Air; the iPad Pro; and the iPad mini. Thankfully, they all offer parental controls so you can regulate how your child uses the device ... and how long they spend on it.

WHAT ARE THE RISKS?

PHYSICAL DAMAGE

While some tablets (such as the Amazon Fire Kids editions) come with rugged shock-proof cases, iPads aren't built for rough and tumble. They're also more expensive than most other tablets, and any damage your child's iPad suffers could be costly to repair. Buying a child-friendly case and screen protector for the device could be a wise move, especially if it's being used by younger ones.

SCREEN ADDICTION

Like most digital devices, tablets have the potential to become quite addictive. You might find your child spending too long staring at their iPad, which could lead to irritability, mood swings and a loss of interest in more important tasks. If this happens, be sure to visit the built-in screen time settings and ensure you limit how long they're able to spend on the device each day.

INAPPROPRIATE CONTENT

18
CENSORED

Even if it would never occur to your child to go searching online for age-inappropriate sites, apps or information, there's always a possibility that something unexpected – perhaps a video that auto-plays or content incorrectly suggested by an algorithm – could appear on their tablet and upset them. You can help prevent this by adjusting the content settings (see our 'top tips' section below).

SIRI SUGGESTIONS

The parental controls built into iOS (the fundamental operating system of Apple devices) enable you to block access to most age-inappropriate content – but your child could potentially still bypass these restrictions (either accidentally or deliberately) by using Siri, Apple's voice-activated digital assistant. To avoid this, toggle the 'Ask Siri' functions to 'off' in the iPad's settings menu.

Advice for Parents & Carers

ENABLE FAMILY SHARING

Before letting little ones loose on an iPad, it's a good idea to set up Family Sharing, as this lets you utilise the parental controls to manage exactly how your child is able to use the device. You can do this fairly easily by going into the iPad's settings; once there, you'll be able to add an existing Apple account (if your child already has one) or set one up from scratch.

APPLY SOME LIMITS

The 'Downtime' function allows you to tell the iPad to lock itself at certain periods (at mealtimes or before bed, for instance), while 'App Limits' removes access to certain apps once they've been used for a specified length of time each day. The iPad can display a reminder when these limits have nearly been reached, letting your child mentally prepare for the end of their gaming or viewing time.

STOP ACCIDENTAL SPENDING

To empower your child with an increased sense of freedom on their device (without giving yourself something else to worry about in the process) you could enable the iPad's 'Ask to Buy' feature. Whenever your child tries to download or buy an app, game or product, the iPad sends you a request to approve (or deny!) it. This option only becomes available if you've set up Family Sharing.

SET CONTENT AND PRIVACY RESTRICTIONS

The parental controls can stop the iPad from displaying explicit or age-inappropriate content (in apps like iTunes and Safari, for instance) when your child is signed into their account. You'll also be able to restrict the capacity to download and install apps, and you can specify permissions which prevent children from changing the iPad's privacy settings once you've selected them.

TRACK IT DOWN

Just like the iPhone, Apple's iPads have 'Find My' software to help you locate your child's iPad – or indeed, any linked Apple devices that have gone AWOL, including phones, watches and AirPods. If you enable 'Find My' in the settings menu, it will display the last known location of an iPad that's been mislaid, as well as giving you the option to lock a missing iPad that you suspect has been stolen.

Meet Our Expert

Carly Page is an experienced technology journalist with a track record of more than 10 years in the industry. Previously the editor of tech tabloid *The Inquirer*, Carly is now a freelance technology journalist, editor and consultant.



NOS National Online Safety®
#WakeUpWednesday

SPORTS FIXTURES

Monday 13th March 2023

- Under-12s Girls' Netball Tournament at Norwood School. Depart school at 2.30pm. 3pm Start. Return at 5pm approx.: **Ms Thomas/Mr Foster**

Tuesday 14th March 2023

- Under-12s & 13s Girls' & Boys' Inter-Borough Cross-Country Championships at Avery-Hill. Depart school at 10am. 11.30am Start. Return at 4.30pm approx.: **Ms Findley/Mr Price**
- A-Level PE Revision Day at Dulwich College. Depart school at 9am. 9.30am Start until 4pm.: **Ms Thomas/Ms Cave**
- Under-13s Girls' Hockey Away Game against Streatham and Clapham High School. Depart school at 1.50pm. 2.30pm Start. Return at 5.30pm approx.: **Mr Pizzey**
- Under-14s Boys' Basketball Away Game against Walworth Academy. Depart school at 2.50pm. 4pm Start. Return at 6pm approx.: **Mr Karp**

Wednesday 15th March 2023

- Under-13s Boys' Hockey Tournament Away Match at Kingston Grammar School. Depart school at 8am. 9.30am Start. Return at 5pm approx.: **Mr Price/Mr Pizzey**
- Under-16s Girls' Rugby Away Game against Coloma Convent Girls' School. Depart school at 1.30pm. 2.30pm Start. Return at 5.15pm approx.: **Mr Worsley/Ms Cave**

Thursday 16th March 2023

- Under-14s Boys' B-Football English Schools Semi-Final Away Game against Weydon School (Guildford). Depart school at 11am. 2pm Start. Return at 6pm approx.: **Mr Pizzey/Mr Price**
- Under-13s Girls' Basketball Away Game against The Elm Green School. Depart school at 3pm. 3.30pm Start. Return at 5pm approx.: **Mr Roberts**

Friday 17th March 2023

- Under-15s Boys' Football Home Game (Fields) against Acland Burley School. Depart school at 1.50pm. 2.30pm Start. Return at 5pm approx.: **Mr Price**
- Under-12s Boys' A-Football Home Game (Fields) against St Thomas The Apostle School. Depart school at 2.50pm. 3.15pm Start. Return at 5pm approx.: **Mr Attenborough-Warren**
- Under-14s Boys' Rugby Away Game against Graveney School. Depart school at 1.50pm. 2.45pm Start. Return at 5.30pm approx.: **Mr Worsley/Mr Foster.**

View all fixtures [here](#).

HOUSE NEWS

Online Safety Corner

For this week's Online Safety focus, we have included some important tips for parents and carers about the use of iPads. See Page 19.

Red Nose Day: The Little Red Nose That Makes a Really Big Difference



For 2023, Comic Relief proudly presents the new Red Nose, exclusively designed by Sir Jony Ive. The magically transforming Red Nose starts as a tiny, flat crescent and springs into a beautiful honeycomb-paper sphere. It proves that the littlest of things can make a huge difference. Click [here](#) for more information.

TASK:

Design a 'red nose'. The most creative nose will win valuable points for your house.

HOUSE ACTIVITY:

Submit your design to the House Team: housesystem@kingsdale.southwark.sch.uk Ensure your entry is accompanied by your full name, tutor group and House.



The House Leader Board 2022-23

Week ending 10th March 2023

- 1st Place – Swift 27,210 Points
- 2nd Place – Dove 24,222 Points
- 3rd Place – Albatross 22,262 Points
- 4th Place – Falcon 21,771 Points
- 5th Place – Eagle 19,446 Points

Swift are leading the race and pulling further away! Can any other House catch them?