



# PARENTAL NEWS BULLETIN

Issue 20 Monday 20<sup>th</sup> February 2023

## HEADLINE NOTICES

### Second Spring Half-Term

We would like to wish all students and families a very warm welcome back to the second Spring half-term.

### Curriculum & Pastoral Coffee Mornings

Please be reminded that we are offering parents/carers the opportunity to visit the school to meet with senior and middle leaders informally to discuss a range of curriculum and pastoral matters and to have a direct input regarding our provision. These sessions will take place during the day and will be in addition to our established, more general, monthly Parents' Forums. Whilst parents will be able to raise any matters relating to the school, this term we shall be focusing specifically on Science. Other subjects will follow on a rotational basis including bullying, misogyny and sex education.

The dates of this term's meetings are as follows:

Friday 24<sup>th</sup> February 2023 11am – 1pm, Year 11

Friday 3<sup>rd</sup> March 2023 11am – 1pm, Year 12 & 13

Friday 10<sup>th</sup> March 2023 11am – 1pm, Year 10

Friday 17<sup>th</sup> March 202, 11am – 1pm, Year 9

Each morning event starts at 11am. Please click [here](#) to register a place. Any queries should be directed to Ms Dyer via [asrpa@kingsdale.southwark.sch.uk](mailto:asrpa@kingsdale.southwark.sch.uk). Please be advised that we shall be organising virtual meetings during the evening to enable these discussions to take place with parents/carers who are unable to attend during the school day.

### 'Spotlight On'.....Science

This term sees the first of our 'Spotlight On' articles with the KFS Science department taking the first slot.

At this time, parents may be aware that there is a national crisis in the recruitment and retention of Science teachers in the UK. You can read more about this situation [here](#). Despite these challenges, Kingsdale Science students continue to be almost uniquely taught by qualified subject specialists and the team is working very hard to ensure that all students receive quality teaching, intervention and support at all times. We shall also be sharing positive news at each event such as the opening of at least 8 new Science Laboratories! Our ongoing Curriculum Forums with a Science focus which shall be taking place throughout the term, provide parents with an opportunity to visit the school to discuss this provision further. Throughout this and future Parental News Bulletins, parents will also find details of the focused booster, revision and extra-curricular activities that continue to take place on a weekly basis to ensure students have a rich Science education at the school. Please contact [asrpa@kingsdale.southwark.sch.uk](mailto:asrpa@kingsdale.southwark.sch.uk) with any queries.

## THEME & WORD OF THE WEEK

'You are Known by the Company you keep'

Surround yourself with people whom you aspire to be like. Interesting, energetic, good-hearted people. These characteristics will rub off.'

### Cryptography

A method of protecting information and communication through the use of codes.

## SCHOOL NEWS

### Considerate and Safe Parking

Please see below an important message from the local Police Safer Neighborhood Team for parents with regards to parking.



### Dulwich Safer Neighbourhood Team



You risk being fined and receiving penalty points by parking your vehicle on white or yellow zig-zag lines - but yellow zig zags needs an accompanying sign to be legally enforceable. White lines on the other hand are enforced by local authorities and the police, and should never be parked on.

#### PENALTY:

Parking on zigzag lines is an endorsable offence, this means if you park on zig zags you are likely to receive a fixed penalty notice (FPN) and will incur £100 fine and 3 penalty points on the offenders licence.



Email address:  
[DulwichWood@met.police.uk](mailto:DulwichWood@met.police.uk)  
[DulwichHill@met.police.uk](mailto:DulwichHill@met.police.uk)  
[DulwichVillage@met.police.uk](mailto:DulwichVillage@met.police.uk)

## Year 8 Options Evening

Year 8 Options Evening will take place on **Wednesday 8th March**.

All Year 8 parents are warmly invited to attend and teachers from all subject areas will be available to discuss options for students moving forward into Year 9.

**More details issued separately.**

# Valentine's Concert

23rd February | 7PM



**Performances from  
Sixth Form Students, Teachers & Parents.**

**Bar opens at 6:30PM**

**(cheaper with cash)**



**KINGSDALE  
FOUNDATION SCHOOL**



# SCHOOL NEWS cont.

## Ski Trip to Andorra 2023!

We are pleased to confirm that we are able to run the annual KFS ski trip following intensive price negotiations. The trip is being organised in partnership with Equity, the same company responsible for each of the successful journeys to Andorra in recent years. Equity has an excellent reputation and is fully IATA/ABTA/ATOL bonded. They are also a full member of the Student Travel Forum (STF), a group committed to the promotion of good practice and safety for school travel.



The ski trip will be **open to all levels of skiers including beginners**. In 2022, we also had a small group of snowboarders. Travel to Andorra will be by coach and will **depart on Friday 7<sup>th</sup> April and return on Friday 14<sup>th</sup> April 2023**. During this period, we shall be staying at one of the best Club Hotels, Hotel Marco Polo, based in the resort of Vallnord.

The cost of the trip will be £879, which includes travel by coach, accommodation, full board, ski equipment hire, ski lift pass, full insurance and five hours of ski school lessons per day. There will be 5 days of skiing. Evening entertainment will be organised and include bowling, ice-skating and activities in the hotel. These are all included in the above price.

Should you require financial assistance in covering the cost of the trip, please email the Headteacher directly on [aspa@kingsdale.southwark.sch.uk](mailto:aspa@kingsdale.southwark.sch.uk) To ensure this remains a fully inclusive excursion, please be reassured that a range of discounts, subsidies and payment plans are available (subject to eligibility).

Should your child be offered a place, we will require a first deposit (non-refundable) of £279 as soon as possible and at the latest by week ending 20<sup>th</sup> February 2022. Full details of the payment schedule issued separately.

**ALL students will be required to have their own full passport.** Any student over 18 will be required to pay a £39 supplement for their ski pass. Should the trip be oversubscribed, places will be awarded using a lottery process. Please register your interest using the link [here](#).

## Kingsdale Win Chess Competition

Kingsdale took a group of 4 students to the Southwark Schools Learning (Independent/State School) Partnership (SSLP) chess competition last week where we played against 7 other schools in the area. During a 3 hour chess marathon, the Kingsdale team played 27 games in the round



Louis Grillo Rodriguez (Year 9) was unbeaten during the round robin phase and contributed the largest haul of points for the team competition. There were also excellent contributions from Darren John and Ezana Tewodros (both Year 7) which resulted in Kingsdale winning the Team Prize collecting 19 wins in total.

Nasir Martin-Akal (Year 9) then went on to win the individual knock-out competition to complete a full sweep of awards for the Kingsdale team. Well done to all players!

## Calling all Budding Student Journalists!

Kingsdale students have started their own school newspaper and are inviting fellow students to get involved! If you're passionate about current affairs and would like to write reviews and news reports for the Kingsdale Telegraph, please get in touch!

**Click image to open the latest edition!**



Students should post their illustrations, reviews and articles (maximum 80 words for reviews and 100 words for articles) in the school newspaper contributions box, situated in the main office. Please include your full name and tutor group. Alternatively, they can email the team via [kingsdaletelegraph@kingsdale.southwark.sch.uk](mailto:kingsdaletelegraph@kingsdale.southwark.sch.uk)

## SSLP Photography Competition



The [Photography Competition](#) is open to **all staff and students** at all SSLP schools. Anyone interested in being notified about winners and each new round in the competition should [register now](#).

The second round is **Natural Worlds** and can be [entered here](#).

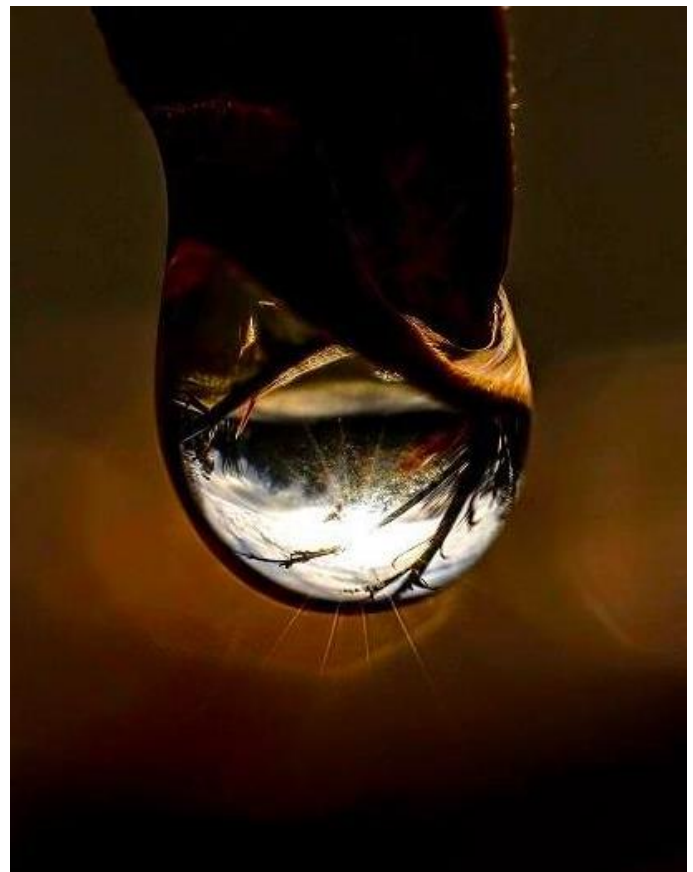
### Calling all Budding Photographers.....

This is the second round of the SSLP Photography Competition 2023, this month we are looking for pictures of nature, particularly those that make students see a whole new world or even worlds. They might make use of macro settings or take a view from afar, or they might be able to capture a world that's ordinarily out of sight.

Students should use their imagination to show us an inspirational **Natural World**.

**Deadline for this round:**  
**29<sup>th</sup> February 2023**

Please contact the KFS Art team via [art&dt@kingsdale.southwark.sch.uk](mailto:art&dt@kingsdale.southwark.sch.uk) with any queries.



### Reminder to Students

Remember the 4 Ls!

No Lateness

No Loudness

No Litter

And No Bad, Hurtful or Inappropriate Language



# SCHOOL NEWS

## Safe Travel to School

At school, we have shared the key messages with our students about keeping safe on their travel to and from school.

Some of the key messages are outlined below:

### “LOOK UP LOOK OUT”

- **BE AWARE** of your surroundings.
- **BE AWARE** when using your mobile phone.
- Know your route home.
- Keep to busy roads.
- Try to be with other people.
- If someone tries to stop you keep walking.
- **SHOUT** for help and make **NOISE**.
- If anything happens speak to a trusted adult as soon as you can.
- There is no right or wrong response as each situation is different but remember that **YOUR SAFETY IS PARAMOUNT**.  
Only **YOU** can assess the risk.
- Possessions are replaceable, but **you are not**.

**Your child must contact the Police immediately on 999 if they are concerned about their safety or if they are the victim of a mugging/attempted mugging.**

Students and Parents should also inform the school so that we can offer pastoral support and liaise with our Safer Schools Officer – PC Crampton.

Please contact Mr Harding at the school with any queries relating to this notice

[Dhg@kingsdale.southwark.sch.uk](mailto:Dhg@kingsdale.southwark.sch.uk)



## SCHOOL NEWS

### Kingsdale is a Safe Space

We would like to take this opportunity to once again remind students and their families of our two confidential emails which are operational both during and outside of school hours.

This provision is available for any member of our school community wishing to seek advice, discuss any matters relating to mental health & well-being or report an incident or concern confidentially via email.

We appreciate that students, parents, carers or guardians may wish to speak to someone outside of school hours or may wish to disclose an incident or concern confidentially or anonymously.

Our two confidential emails are:

[health&wellbeing@kingsdale.southwark.sch.uk](mailto:health&wellbeing@kingsdale.southwark.sch.uk)

[tellsomeone@kingsdale.southwark.sch.uk](mailto:tellsomeone@kingsdale.southwark.sch.uk)

Please contact Ms V. Turner for further information regarding this provision or any matters relating to mental health & well-being at Kingsdale School via [vtr@kingsdale.southwark.sch.uk](mailto:vtr@kingsdale.southwark.sch.uk)



# MY PHONE



METROPOLITAN  
POLICE

## KEEPING YOU AND YOUR PHONE SAFE

**Getting a phone is really exciting. You can stay in touch with friends and find out more about the world.**

**Don't fight back, it's not worth the risk when a phone can be replaced.**

- Tell us if someone robs you or tries to. It's important you get help straight away by dialling **999** using a friend or trusted adult's phone rather than contacting police when you get home. This gives us the best chance to catch the suspects, recover stolen items and make sure you're safe.

- If you don't want to talk to police – contact Fearless online, without giving your name, at [www.fearless.org](http://www.fearless.org)
- Memorise or keep a note of a parent/carer's phone number in a separate place in case of emergency.

**As police officers, our job is to keep you safe and stop people who want to steal property like phones, cash, earphones and even expensive coats or trainers.**

**You can help us do that by being careful where you use your phone and taking care of cash and other valuable items.**

## YOU CAN HELP US PROTECT AND TRACK YOUR PHONE IF IT'S STOLEN.

### HERE'S 3 THINGS YOU CAN DO:

- Your phone will have security features such as a passcode or fingerprint/face ID. Make sure you use it to protect access to your phone.

## 5 TIPS TO KEEP SAFE

- Keep your phone and valuables out of sight and in a safe place. Take care when you take them out especially near bus stops and train stations.
- Stay alert and remember earphones/headphones can distract you from being aware of someone approaching from behind you. Thieves can approach on mopeds, e-scooters and pedal cycles.
- Tracker apps can help locate your phone if it's lost or stolen. Ask a parent to show you how to set one up.
- Record the phone's IMEI number in a separate place at home. Find this by typing in **\*#06#**. You'll need to give this number to police if it's stolen.

**For more information go to [www.fearless.org/campaigns/robbery](http://www.fearless.org/campaigns/robbery)**



# LANGUAGE NEWS

## La Feria de Sevilla

As part of their enrichment and discovery of the Spanish culture and its music, students have recently learnt about the The Seville Fair (which in Spanish is Feria de Abril de Sevilla). This event is held in the Andalusian capital of Seville, Spain and has an important link to flamenco and music. In order to promote this year's event, students in Year 7 have created their own posters.



A special mention goes to Nadia Ademokoya (7RFL), Oscar Przybylak (7RFL), Cheynne Thompson (7RFL) and Leah Breslin (7SBU) for their creativity.



## La Chandeleur

On Thursday 2<sup>nd</sup> February, students celebrated the French tradition La Chandeleur or Candlemas, also mostly known as the 'Day of the Crêpes'. Students enjoyed learning and sharing this tradition by making their own crêpes and bringing additional snacks.

A special mention goes to Oscar Chhatwal (8HWS) and Marvyn Wilson (8KTD) for their work.

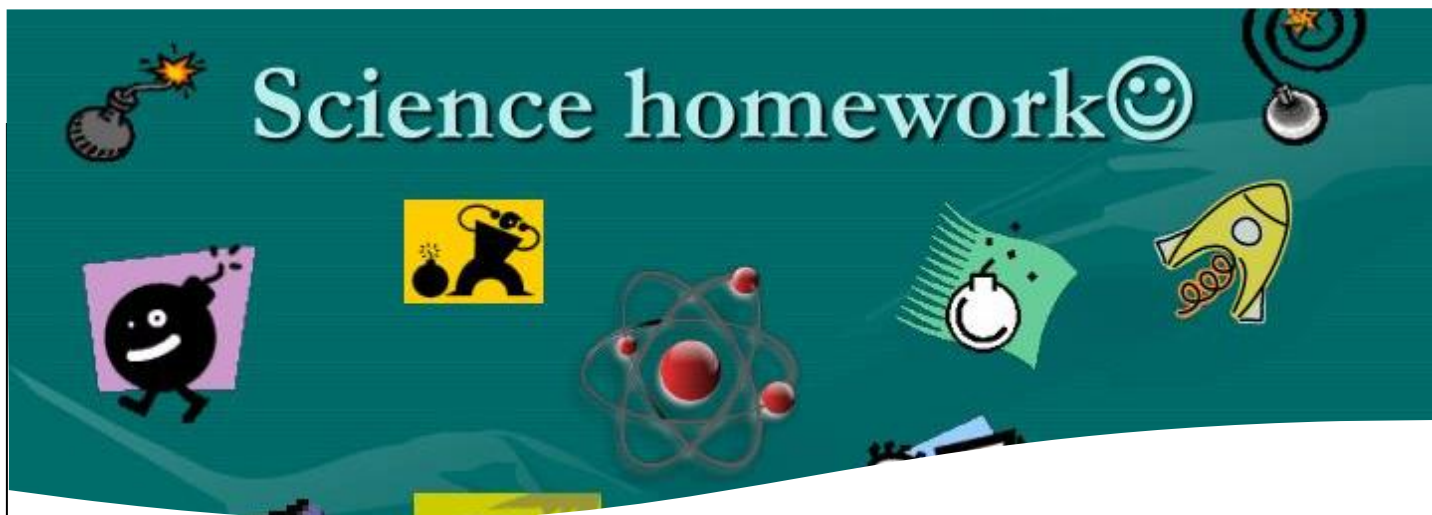


## Kingsdale First Language Ambassadors

A big thank you to Kingsdale's first Languages Ambassadors, Tosia Wieczorek (10KAU), Amy Acton (10APN) and Gaia Felice (10HPE) who recently prepared and delivered a lesson in Spanish on the topic of 'El tiempo libre' to the Year 6 students of Jessop Primary School who were celebrating Spanish week. Our Ambassadors were excellent representatives of the Kingsdale community and delivered a really fun and engaging lesson!







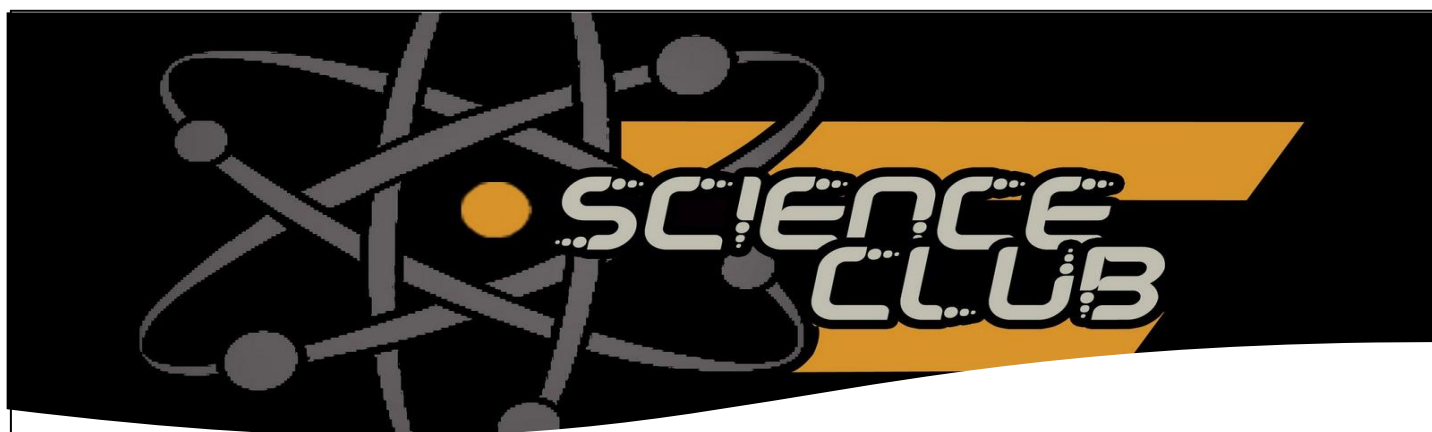
## Are you struggling with Year 7 Science Homework?

Do you need help to boost your science knowledge?

After the February half-term break, we are opening a homework clinic for Year 7 students to catch up with any missing learning and to provide any help they need with the homework of preparing for their science tests.

Every **Monday** after school at **3.45 pm** in **SC6**

**First session Monday 20<sup>th</sup> February 2023**



Our **Science Club** for Year 7 & 8 students take place every **Wednesday** after school starting at **3.45pm** in **SC8**.

All students in Years 7 & 8 welcome.



### Some of the activities we have already completed:

- Square bubbles
- Swabbing cheek cells
- Density columns
- Making cheese
- Imploding cans
- Slime
- Making a compass
- Spaghetti & marshmallows structures
- Volcanos





# LGBTQ+ Book Review Competition

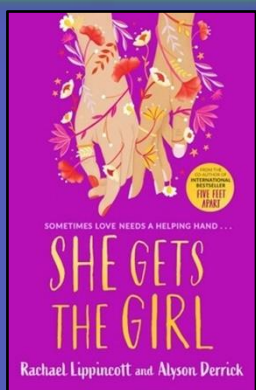
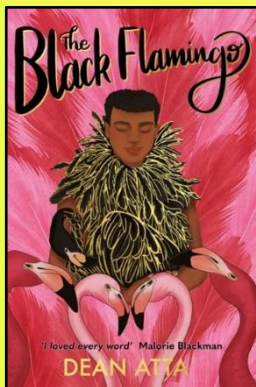
Want to tell everyone all about your new favourite LGBTQ+ book?

Want to **win a £10 book voucher** and have your review published in the school bulletin?

(All reviews can be published anonymously!)

Write a review of any of the new LGBTQ+ titles in the USL and email to [library@kingsdale.southwark.sch.uk](mailto:library@kingsdale.southwark.sch.uk) by **23/03/23!**

We will be choosing **THREE** winners!



Alice Oseman, *Heartstopper* (any volume or the whole series!)

Dean Atta, *The Black Flamingo*

Dean Atta, *Only on the Weekends*

Kacen Callender, *Felix Ever After*

Rachael Lippincott and Alyson Derrick, *She Gets The Girl*

The Kao, *Magical Boy*

Juno Dawson, *What's the T?*

Lucy Sutcliffe, *Girl Hearts Girl*

Alex Gino, *George*

Sarah Hagger-Holt, *Nothing Ever Happens Here*

Meg Grehan, *The Deepest Breath*

Robin Talley, *Lies We Tell Ourselves*

Benjamin Dean, *Me, My Dad and the End of the Rainbow*

Adiba Jaigirdar, *Hani and Ishu's Guide for Fake Dating*

Alice Oseman, *Loveless*

Alex Gino, *Melissa*

John Boyne, *My Brother's Name is Jessica*

Lewis Hancox, *Welcome to St. Hell, My Trans Teen Misadventure*

Darren Charlton, *Wranglestone*

Fran Hart, *The Other Ones*

Ryan La Sala, *The Honeys*

Benjamin Dean, *The King is Dead*

Alexis Caught, *Queer Up*

Simon James Green, *Alex in Wonderland*

Simon James Green, *Gay Club*

Becky Albertalli, *Simon vs The Homo Sapiens Agenda*

Becky Albertalli, *Love, Creekwood*

Tess Sharpe, *The Girls I've Been*

Meredith Russo, *Birthday*

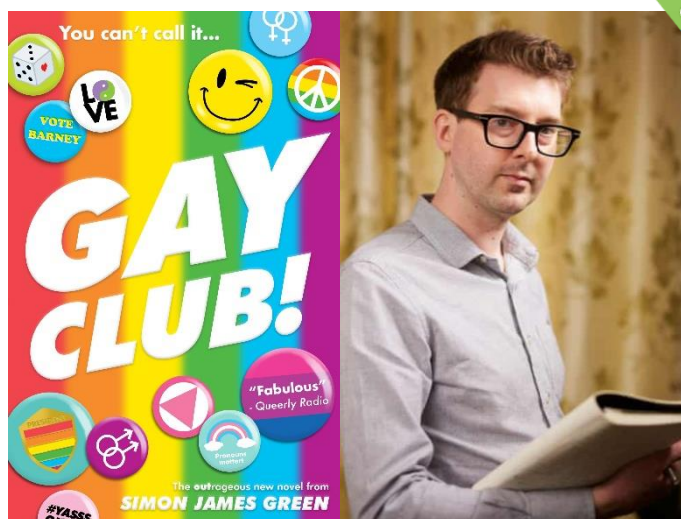
Alex Gino, *Rick*

Molly Knox Ostertag, *The Girl from the Sea*

Jamie Lawson and Eve Lloyd Knight, *Rainbow Revolutions*

# SCHOOL NEWS cont.

The Kingsdale LGBTQIA+ Club  
attend talk at Dulwich College



The LGBTQIA+ Club at Kingsdale were invited to attend a talk from best-selling author Simon James Green at Dulwich College on Friday 3<sup>rd</sup> February. We arrived at 1.30pm and were taken to the wonderful library at Dulwich College where we were treated to tea, coffee and chocolate muffins and had some time to browse their fabulous LGBTQ History Month display! We were joined by the Dulwich College and Allyn's 'QueerSoc' and spent some time mingling and adding new books to our wish lists!



Simon James Green then led an insightful and thought-provoking talk about his experience growing up in the 1990's as gay, how talking about this would have been banned back then because of Section 28 legislation and how far we have come as a society today but still have a long way to go! We really enjoyed asking him questions about his writing process and he talked to us about his new book called 'Gay Club' which we all can't wait to read! We then finished the discussion with a controversial debate about 'Heartstopper' before heading to the main auditorium to hear Simon's main talk.

We took our seats (with the welcome addition of orange juice and biscuits) and watched as the auditorium started to fill with MORE students!



Simon began his talk with an anecdote about his teenage crush, a boy called Tom who he was head over heels in love with. He told the world how when Tom kissed him for the first time – he actually told Tom he wasn't gay! He expressed how this was a difficult time for him, and how he can see how much easier it is now for young people to express their sexuality freely. Simon continued with his speech and shared some staggering statistics about LGBTQ youth today. He also said that he was banned from speaking at a Catholic School in Croydon, a shocking event that made the papers. He reiterated how important it is that schools have spaces where students can have frank and open conversations about LGBTQ+ issues but also spread a message of inclusivity and acceptance to the wider school. He then finished his speech with a brilliant dramatic reading from his book, which was so good that if we weren't already adding it to our shopping baskets already we definitely would be now! We loved meeting the other schools and chatting about how they run their events and look forward to the range of events that Kingsdale have on for LGBTQ History Month!

Thank you Simon, Thank you Mr Tilley and Ms Loosemore and to Dulwich College for hosting.

*By Iris Heorton and Marta Canar-Tinizaray*



## LGBTQ+ BOOK RECOMMENDATIONS

### ROMANCE

- I WAS BORN FOR THIS, ALICE OSEMAN
- LOVELESS, ALICE OSEMAN
- ORANGES ARE NOT THE ONLY FRUIT, JEANETTE WINTERSON
- SONG OF ACHILLES, MADELINE MILLER, 13+
- SEVEN HUSBANDS OF EVEYN HUGO, TAYLOR JENKING REID 13+
- I WISH YOU ALL THE BEST, MASON DEEVER
- THEY BOTH DIE AT THE END, ADAM SILVERA
- FELIX EVER AFTER, KACEN CALLENDER

### FANTASY

- CINDERELLAS DEAD, KALYNN BAYRON
- SIX OF CROWS DUOLOGY, LEIGH BARDUGO
- AFTERLOVE, TANYA BYRNE
- KING OF SCARS DUOLOGY, LEIGH BARDUGO

### GRAPHIC NOVELS

- HEARTSTOPPER, ALICE OSEMAN
- SENSIBLE FOOTWEAR, KATE CHARLESWORTH
- ARE YOU LISTENING, TILLY WALDEN
- GENDERQUEER, MAIA KOBABE

### OTHER

- THE GIRLS I'VE BEEN, TESS SHARPE
- PROUD, COMPILED BY JUNO DAWSON
- THIS BOOK IS GAY, JUNO DAWSON
- WHAT'S THE T, JUNO DAWSON



## LGBTQ+ FILM/TV RECOMMENDATIONS

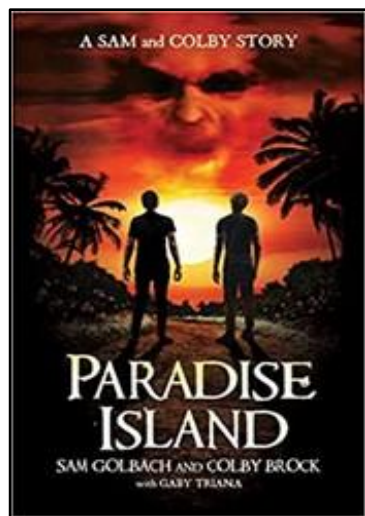
### FILMS

- PRIDE- 15, NETFLIX
- THE IMITATION GAME- 12, NETFLIX
- LOVE SIMON- 12, PRIME
- PROM- 12, NETFLIX
- ALEX STRANGELOVE- 15, NETFLIX
- THE HALF OF IT- 12, NETFLIX
- HEARTSHOT- 12, NETFLIX
- LET IT SNOW- 12, NETFLIX



### TV SHOWS

- ATYPICAL- 12, NETFLIX
- HEARTSTOPPER- 12, NETFLIX
- YOUNG ROYALS- 15, NETFLIX
- I AM NOT OK WITH THIS- 15, NETFLIX
- FIRST KILL- 15, NETFLIX
- DOCTOR WHO (S13)- 12, BBC IPLAYER
- ONE OF US IS LYING- 15, NETFLIX
- DERRY GIRLS- 15, NETFLIX
- SCHITTS CREEK- 15, NETFLIX
- GLEE- 12, PRIME
- DICKINSON- 15, APPLE TV
- QUEER EYE- 12, NETFLIX



**Teacher Recommendation**  
Ms Bell recommends *Paradise Island* by Sam Golburch and Colby Brock.

Sam and Colby's vacation in paradise goes from enchanting, to weird, to deadly, when Trey, an old acquaintance, insists they can't leave without a visit to the

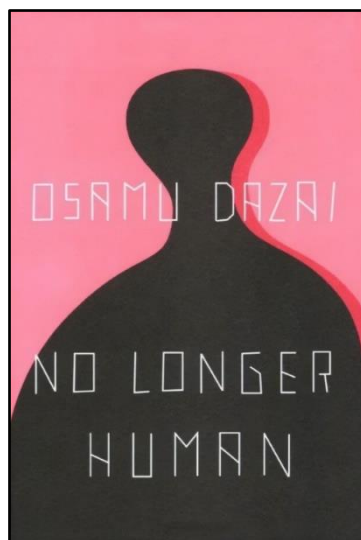
legendary Na Pali Coast.

It turns out Trey has been living at the infamous Belle Estate, owned by a wealthy and eccentric widow - who locals believe is a witch.

Belle Estate's walls hold an eerie sway over all who enter and a dark, shadowy presence seems to be following them around the grounds. When an unfavourable change of plans forces them to stay overnight, Sam and Colby are in for the most terrifying encounter of their lives.

Ms Bell adored this book because it was gory and had fantastic plot twists. Suitable for students aged 15 years+!

## Reading Recommendations



**Student Recommendation**  
Alex Harrison recommends *No Longer Human* by Osamu Dazai.

Portraying himself as a failure, the protagonist of Osamu Dazai's *No Longer Human* narrates a seemingly normal life even while he feels himself incapable of understanding human beings. Oba Yozo's

attempts to reconcile himself to the world around him begin in early childhood, continue through high school, where he becomes a 'clown' to mask his alienation and eventually lead to a failed suicide attempt as an adult. Without sentimentality, he records the casual cruelties of life and its fleeting moments of human connection and tenderness. Alex really liked this book because of its dark themes, and that's Alex' thing!

Suitable for students in Key Stage 5 and not younger than 16 years!

# PHILOSOPHY NEWS



TRINITY  
COLLEGE  
CAMBRIDGE

## Philosophy Essay Prize

Entering the Trinity Philosophy Essay Prize at Cambridge University offers Year 12 students a fantastic opportunity to demonstrate their scholarship beyond A Level. This would be particularly beneficial to students considering applying to Oxbridge, reading Philosophy or a similar discipline at university.

### This year's essay questions are:

1. There is progress in science. Is there progress in philosophy and is the field only successful if there is?
2. Can we love someone more than ourselves and what does this imply about the human condition?

Students can pick one question to respond to in no more than 2,000 words, to be handed in by 31<sup>st</sup> May 2023.

First prize is £600 to be split with the winner and their school.

If you are interested in entering, please see Ms Kirby in the Humanities office or email [akd@kingsdale.southwark.sch.uk](mailto:akd@kingsdale.southwark.sch.uk)



### Lost Property

We are still receiving a large number of items that have been mislaid or lost by students. In many cases, these items are unlabelled, making it very hard for them to be quickly and successfully reunited with their owners!

Please can we ask parents to label all items of their children's property at school, including water bottles, blazers and coats.

Lost property queries can be directed to [lostproperty@kingsdale.southwark.school.uk](mailto:lostproperty@kingsdale.southwark.school.uk)

# CAREERS

KFS Careers Talk Series -  
Publishing



The Kingsdale Careers Team has organised a Careers Talk on Publishing on Thursday, 23<sup>rd</sup> February 2023. We have invited Ms Sara Lloyd to lead this talk for our students from Years 7-13.

If your child is interested in attending please contact us via [careers@kingsdale.southwark.sch.uk](mailto:careers@kingsdale.southwark.sch.uk) or contact your child's Head of Learning.



## SCHOOL NEWS

### KFS Uniform Bank

We have many items of clothing to help supplement your uniform requirements (subject to availability).

Please note we do not stock ties or individual badges.

### Prices:

Blazer £6, Sweatshirt/Jumper £4  
Skirt/Trousers £3 and all shirts £2

### Payment:

Please use appropriate combination of donation boxes (£6/4/3/2) on Parent Pay. Screen shot or download receipt. Come along at opening times to select items from the Uniform Bank.

Open: 3.45 – 4.45pm Mon/Wed/Fri  
Staff: Mr Lewis and Ms Dalrymple

### The School Shop

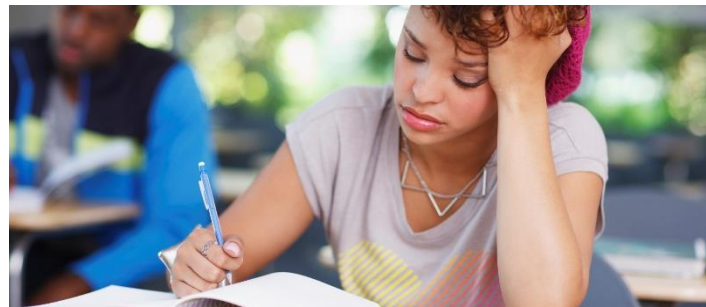
A reminder that our School Shop is now open during the school day to enable students to purchase a range of useful items that they might need. This includes stationary and uniform items; all of which can be purchased using their school fob.





Is my child on the SEND register?

At Kingsdale we support all our students, whether they have a specific diagnosis or not. If students have a specific diagnosis, a SEND profile sent to us from primary school, a suspected diagnosis or they have been flagged by staff/parents/carers or an external organisation they will be on our register. If you are unsure, please do contact us and we will be able to assure you either way. [senco@kingsdale.southwark.sch.uk](mailto:senco@kingsdale.southwark.sch.uk) If they are on our register, they will have a personalised profile on our online Edukey system (available to all staff who teach your child) that will have all the information, strategies, provision plans and notes about them and the support they need. This profile is updated regularly and will include any additional support your child is receiving.



Definition of SEND

*'A young person has SEND if they have a learning difficulty or disability which calls for special educational provision to be made for them. Children and young people who have SEND may also have a disability under the Equality Act 2010.'*

*'Where a young person is covered by SEND and disability legislation, reasonable adjustments and access arrangements should be considered as part of the SEND planning and review.'*

Code of Practice 2014

<b>Communication and Interaction</b> <ul style="list-style-type: none"><li>❖ Speech, language and communication needs (SLCN)</li><li>❖ Autistic Spectrum Disorder (ASD)</li></ul>
<b>Social Emotional And Mental Health (SEMH)</b> <ul style="list-style-type: none"><li>❖ Attachment disorder</li><li>❖ Behavioral difficulties</li><li>❖ Depression/anxiety/self-harm</li></ul>
<b>Sensory and/or Physical</b> <ul style="list-style-type: none"><li>❖ Hearing impairment</li><li>❖ Visual impairment</li><li>❖ Physical disability</li></ul>
<b>Cognition and Learning</b> <ul style="list-style-type: none"><li>❖ Specific Learning Difficulties (SpLD)</li><li>❖ Moderate Learning Difficulties (MLD)</li><li>❖ Attention deficit hyperactivity disorder (ADHD)</li></ul>

<p>The purpose of the identification of needs within these broad areas is to enable the school to consider what action needs to be taken, not to fit a student into a category. When reviewing a child's needs, a holistic, 'whole-child' view is considered – not just their special educational needs.</p> <p><b>Education, Health and Care Plans (EHCPs)</b></p> <p>A minority of high need students will have an Education Health and Care Plan or EHCP (previously a statement of special educational need) which sets out the area of need as well as the arrangements required to support those needs. If you would like to know more about this please contact us and we can advise you.</p>
------------------------------------------------------------------------------------------------------------------------------------------------------------------------------------------------------------------------------------------------------------------------------------------------------------------------------------------------------------------------------------------------------------------------------------------------------------------------------------------------------------------------------------------------------------------------------------------------------------------------------------------------------------------------------------------------------

**Intervention and support cannot compensate for a lack of good teaching. High quality teaching, appropriately differentiated for individual pupils, is the first step in responding to possible special educational needs.**

### MANAGING STUDENTS' NEEDS ON THE SEND REGISTER

The provision at Kingsdale Foundation School is based on the graduated approach cycle of: Assess, Plan, Do, Review

WAVE 1 - Quality first teaching for all learners
<p>The first step in responding to students who have or may have SEND is Wave 1, <b>quality-first teaching</b> which is differentiated and adapted. Our robust CPD programme for all staff supports this policy.</p> <p><i>'Teachers are responsible and accountable for the progress and development of all students in their class.'</i></p> <p>Class teachers will have read the profiles and needs of all their students on Edukey and lessons will be adapted accordingly. Where a concern is raised about a student in a particular subject the first step is for the subject teacher to assess the student's needs in that area and create an appropriate plan of action. The SENDCo will work with faculties and individual teachers to support quality first teaching strategies for students with SEND.</p> <p>The school regularly and carefully reviews the quality of teaching for all students, including those at risk of underachievement. This is done through a variety of means. If evidence collected through the usual assessment and monitoring arrangements suggests that a learner is not making the expected progress in academic, social or other areas, then timely interventions may take place through the;</p> <ul style="list-style-type: none"><li>❖ Subject teacher</li><li>❖ Form Tutor,</li><li>❖ Head of Learning (Link SENDCo)</li><li>❖ Head of Faculty</li></ul> <p>If the problem remains unresolved (after a range of appropriate support strategies have been tried), then a referral to the SEND department will be made.</p> <p>The SENDCo will then begin to work collaboratively with the teacher, the child and the family to identify if the child needs additional or different support.</p>

### SEND FACULTY NEWS

Please contact us via [senco@kingsdale.southwark.sch.uk](mailto:senco@kingsdale.southwark.sch.uk) to discuss any aspect of this communication.

WAVE 2 – SEND Support
<p>Students who have a special educational need as defined by the SEND Code of Practice 2014, will be offered appropriate additional SEND support.</p> <p>This may include:</p> <ul style="list-style-type: none"><li>❖ Differentiated lesson objectives, teaching style, seating plan, additional or differentiated resources to suit the learning needs of students, handouts etc</li><li>❖ Additional support out of class: e.g. withdrawal to work in a small group/ 1:1/ in the LSC/ dyslexia support or assessment/ support from specialist teachers or external providers.</li><li>❖ Access arrangements in exams</li></ul> <p>These actions form part of the graduated approach - Assess, Plan, Do, Review cycle of support. This cycle of support will be refined and revisited to develop an understanding of the student's needs and what supports their attainment.</p>
WAVE 3 – EHCP
<p>Where a student continues to make little or no progress following the Assess, Plan, Do, Review cycle, and the students' needs cannot be reasonably provided for, a request will be made to the Local Authority (LA) to conduct an EHCP assessment.</p> <p>Following this request, the LA will determine whether a statutory ECHP assessment is necessary, make a decision and communicate this decision to the student's parent/ carer. This process should follow statutory timescales not longer than 20 weeks.</p> <p>EHCPs, once issued, are formally reviewed annually, and are used for ongoing monitoring of students' progress. The student, parents/ carer and external agencies involved with the students will be invited to attend this meeting, particularly for transition reviews (Year 9, 11, 13)</p> <p>Support arrangements are discussed with parents and the student to ensure that resources are being used to maximum effect. A representative from the Local Authority is routinely invited to attend all Annual Reviews.</p>

# SEND FACULTY NEWS



UNIVERSITY OF  
**BATH**

## Year 11 Autism Summer School

The University of Bath Autism Summer School for Year 11 students is a **free-to-attend**, one night residential event that aims to give **Year 11 students with ASD** the chance to experience higher education and university life.

The events also aims to equip students with some useful skills to ease their transition to education after GCSEs.

The 2023 Summer School will take place from **Friday 4<sup>th</sup> to Saturday 5<sup>th</sup> August**.

To find out more and apply click [here](#).



## Dyslexia Specialist Training Sessions

The Learning Support Faculty are continuing their association with the Dulwich Based Charity, Bell House, who have kindly offered some free places to upcoming talks on a first come first served basis.

There are 2 free places per week to attend any of these sessions by Tina, their Dyslexia specialist on Thursday mornings 10am - 12pm.

Reading Skills - *23rd February*

Study Skills - *2nd March*

Writing Skills - *9th March*

Developing & Supporting Numeracy Skills - *16th March*

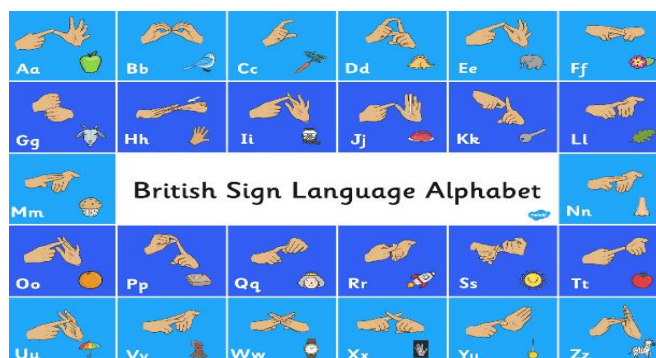
The code for free places is **FreeTicketKD**.

## Supporting the Dyslexic Learner

Tina will help you understand how you can best support a child at home and at school. Children with dyslexia may learn differently from others. This course has been designed to help you understand how you can best support a child at home and at school. We will cover how to recognise different learning profiles, multisensory learning, age-appropriate reading matter and tools, note taking, mind mapping, making numeracy more visual and how to gather evidence that a child needs help and support.

## Learning Sign Language!

At Kingsdale we value student voice and the students have spoken! They are really keen to learn Sign Language and so is Mr Morrison! So, some of our Sixth Form students are appealing for help to set up a **Sign Language Club** at the school.



We are asking if any parents or students know any British Sign Language and would be able to offer some resources or support teaching it informally to some students/staff once a week at lunch time or after school. If you are interested in helping, please email Ms Smith at [gsh@kingsdale.southwark.sch.uk](mailto:gsh@kingsdale.southwark.sch.uk) and your details will be passed on to the relevant people to get this initiative up and running!

## Learning Support Faculty Coffee Mornings

We are pleased to announce we will be continuing with our parental coffee mornings this term. We will be giving parents of students with SEND the opportunity to come into school and engage with the faculty. This will include receiving information about the extra academic support we are offering SEND students, the staff training we are providing, the use of our provision mapping programme 'Edukey', a focused 'Dyslexia Support for Parents' session and updates on our ongoing programmes.

Parents are asked to arrive at 8.50am on the allocated day at the main reception to give time to sign in for a 9.05am start.

## Sixth Form (Years 12 & 13s)

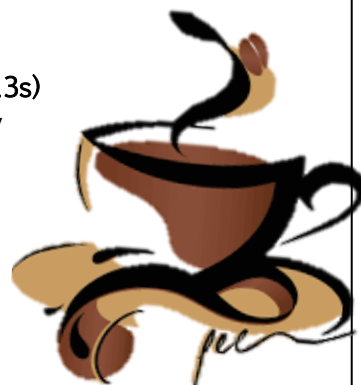
Thursday 23<sup>rd</sup> February  
Period 1: 9.05-10.00

### Year 9

Thursday 9<sup>th</sup> March  
Period 1: 9.05-10.00

### Year 10

Thursday 23<sup>rd</sup> March  
Period 1: 9.05-10.00



We look forward to seeing parents there!

Please direct queries to

[senco@kingsdale.southwark.sch.uk](mailto:senco@kingsdale.southwark.sch.uk)



# SPORTS NEWS

## Year 8 Boys' Rugby Kingsdale v Southborough



Congratulations to the Year 8 Boys' Rugby team for their 30 points to 25 win against Southborough School in the final week of half-term. This was a superb match between 1<sup>st</sup> and 2<sup>nd</sup> placed teams in the league. Excellent rucking and decision making at the breakdown helped the boys play on the front foot. There were several great line breaks from the ball being passed out wide along the backs. In defence, there were several solid tackles made including a try saving tap tackle from James Wilson.

Two hat tricks were scored. One by Joseph Ayora Vanegas and the other by Donny Heritage. Man of the Match goes to Donny Heritage for his hard running and courageous tackling but also the first hat trick I have seen by someone playing in their first league Rugby match for Kingsdale. A big well done to all the boys for their great win.

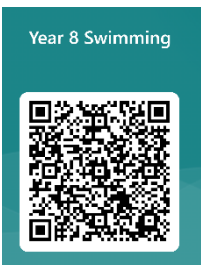
**Final Score:** Kingsdale 30-25 Southborough School

**Man of the Match:** Donny Heritage

### Year 8 Swimming Sessions

Year 8 Swimming sessions will now take place from Friday 3<sup>rd</sup> March 2023 at Crystal Palace National Sports Centre.

If you are interested in signing your child up for these sessions, then please complete the form [here](#) or the QR code.



Please be aware that you will be informed after half term if your child is successful in receiving a place and the dates they have been allocated.

Any questions or issues please  
Email Mr Pissey  
via [apy@kingsdale.southwark.sch.uk](mailto:apy@kingsdale.southwark.sch.uk).

## Year 9 ESFA National Cup Football Kingsdale v John Hampden Grammar School

The Year 9B Boys' Football team stormed into the semi-finals of the ESFA National Cup after a comprehensive 8-1 victory against John Hampden Grammar School.

A fast start from the team meant the boys led 2-0 at half time thanks to goals from Kayode Peterkin. In the second half, John Hampden came flying out the blocks and scored to make the score 2-1.

However, the team kept battling and further goals from Jotham Rhodes, Noah Munroe, Nathaniel Fleming, Hamilton Dawes and a further two from Kayode meant the result was never in doubt.

The semi-final draw took place on Monday evening and the team will now face the winners of Weydon School or Ravens Wood School in the semi-finals.

Well done to all the players.

**Final Score:** Kingsdale 8-1 John Hampden Grammar

**Goals:** Kayode Peterkin (4), Jotham Rhodes (1), Noah Munroe (1), Nathaniel Fleming (1) and Hamilton Dawes (1).

## KEY DATES 2022-23



**Monday 20<sup>th</sup> February**

Start of Second Spring Half-Term

**Friday 31<sup>st</sup> March**

End of Second Spring Term (early finish)

**Monday 3<sup>rd</sup> April – Friday 14<sup>th</sup> April**  
Easter Break

**Monday 17<sup>th</sup> April**

First Summer Half-Term

**INSET DAY** – School closed to students  
except for Year 11 students

**Tuesday 18<sup>th</sup> April**

Start of First Summer Half-Term for all students

**Monday 29<sup>th</sup> May – Friday 2<sup>nd</sup> June**  
Summer Half-Term Holiday

For further information contact the Attendance  
Office: [info@kingsdale.southwark.sch.uk](mailto:info@kingsdale.southwark.sch.uk)  
or call 0208 655 9727



# MATHS NEWS

## Mathematics Scholarship Programme 2023

The schedules for Years 7, 8 and 9 Maths Scholarship Programmes this Spring half-term are as shown below.

### Year 7 Maths Scholarship Programme

#### SCHEDULE SPRING TERM 2023

TIME: 15.50 – 16.35

22 <sup>nd</sup> February 2023	YEAR 7C & 7D	MR PRIOR & MR. CHOY	MA1 & MA2
1 <sup>ST</sup> MARCH 2023	YEAR 7A & 7B	MRS TERZIU & MISS LIMA	MA1 & MA2
8 <sup>TH</sup> MARCH 2023	YEAR 7C & 7D	MR PRIOR & MR. CHOY	MA1 & MA2
15 <sup>TH</sup> MARCH 2023	YEAR 7 EXAM WEEK	YEAR 7 EXAM WEEK	YEAR 7 EXAM WEEK
22 <sup>ND</sup> MARCH 2023	Early school closure	Early school closure	Early school closure
29 <sup>TH</sup> MARCH 2023	FRANKFURT TRIP	FRANKFURT TRIP	FRANKFURT TRIP

### Year 8 Maths Scholarship Programme

#### SCHEDULE SPRING TERM 2023

TIME: 16.20 – 17.05

22 <sup>ND</sup> FEBRUARY 2023	YEAR 8C & 8D	MS MILES & MR JAMES	MA6 & MA8
1 <sup>ST</sup> MARCH 2023	YEAR 8A & 8B	MR MANNING & MS BURNEY	MA6 & MA8
8 <sup>TH</sup> MARCH 2023	YEAR 8C & 8D	MS MILES & MR JAMES	MA6 & MA8
15 <sup>TH</sup> MARCH 2023	YEAR 8A & 8B	MR MANNING & MS BURNEY	MA6 & MA8
22 <sup>ND</sup> MARCH 2023	Early school closure	Early school closure	Early school closure

### Year 9 Maths Scholarship Programme

#### SCHEDULE SPRING TERM 2023

TIME: 13.10 – 13.40

24 <sup>th</sup> February 2023	YEAR 9A & 9B	MS DAVIS & MRS DEVA	AR3 & AR4
3 <sup>RD</sup> MARCH 2023	YEAR 9A & 9B	MS DAVIS & MRS DEVA	AR3 & AR4
10 <sup>TH</sup> MARCH 2023	YEAR 9A & 9B	MS DAVIS & MRS DEVA	AR3 & AR4
17 <sup>TH</sup> MARCH 2023	YEAR 9A & 9B	MS DAVIS & MRS DEVA	AR3 & AR4
24 <sup>th</sup> MARCH 2023	YEAR 9A & 9B	MS DAVIS & MRS DEVA	AR3 & AR4



# HOUSE COMPETITIONS



## International Mother Language Day

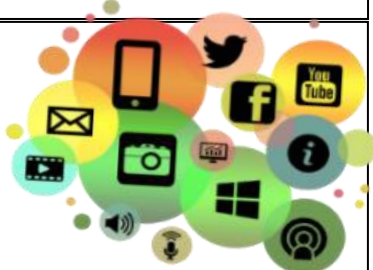
On 21<sup>st</sup> February, it is International Mother Language Day. It is celebrated every year on this day. The purpose of this day is to raise awareness of language, cultural diversity and multilingualism around the world.

**STUDENT TASK:** Write a short poem in your Mother Language to raise awareness of language, cultural diversity and multilingualism around the world.

### HOUSE ACTIVITY

Be sure to share your poem with the House Team at: [housesystem@kingsdale.southwark.sch.uk](mailto:housesystem@kingsdale.southwark.sch.uk). Ensure your entry is accompanied by your full name and tutor group and House.

## Ways we communicate with Parents and students



We communicate with students & parents via:

### Student & Parent Email

Please ensure we have your correct email and mobile phone contact details. Students should also be regularly accessing their student email accounts.

### MS Teams

Used to share schoolwork, assignments and files.

### Twitter/Website

You can find us at @kingsdalefs.

Our website at:

[www.kingsdalefoundationschool.org.uk](http://www.kingsdalefoundationschool.org.uk)

### SatchelOne (previously ShowMyHomework)

Used to share homework details and other school news via the Notice Board feature with students and parents.

[www.satchelone.com](http://www.satchelone.com)

Students should submit work via the online submission option.

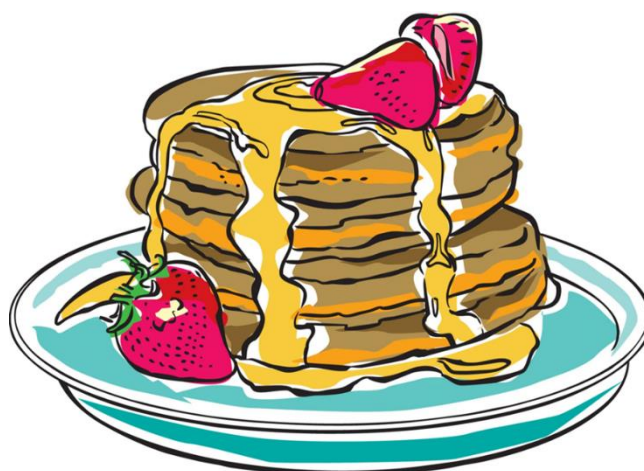
### MyEd app

Downloaded for free at:

<https://www.myedschoolapp.com/>

This app provides a range of useful info for parents.

## Kingsdale Cooking Challenge Shrove Tuesday/Pancake Day



Shrove Tuesday (known in some countries as Pancake Tuesday) marks the start of the Christian festival of Lent. Lent is traditionally a time of fasting and sacrifice, and often Christians give things up – such as chocolate.

### Why do we eat pancakes?

The tradition comes from families using up all ingredients in their cupboards so that they can start Lent the next day. The ingredients – egg, flour and milk – used to be very common things for people to give up for Lent, so it made sense to use them all up.

### Kingsdale's Pancake Cooking Challenge

The House Team want students to unlock your individual culinary skills by stepping up to the **Pancake Cooking Challenge**. From lemon and sugar, to chocolate, honey and maybe even...bacon – what do you like on your pancakes?

**TASK:** Make your own pancakes - use a pancake recipe from the internet or invent your own. Send us a picture and a short description of how you made your pancakes. The best-looking pancakes will win valuable points for your house.

Don't forget to get permission from your parents or carers and have appropriate supervision in the kitchen.

**HOUSE ACTIVITY:** Submit your pancake and recipe to the House Team at:

[housesystem@kingsdale.southwark.sch.uk](mailto:housesystem@kingsdale.southwark.sch.uk)

Ensure your entry is accompanied by your full name and tutor group and House.

We look forward to seeing your work!





# What Parents & Carers Need to Know about WHATSAPP

WhatsApp is the world's most popular messaging service, with around two billion users exchanging texts, photos, videos and documents, as well as making voice and video calls. Its end-to-end encryption means messages can only be viewed by the sender and any recipients: not even WhatsApp can read them. Updates to its privacy policy in 2021 (involving sharing data with parent company Facebook) caused millions to leave the app, but the new policy was widely misinterpreted – it only related to WhatsApp's business features, not to personal messages.



## WHAT ARE THE RISKS?

### SCAMS

Fraudsters occasionally send WhatsApp messages pretending to offer prizes – encouraging the user to click on a link to win. Other common scams involve warning someone that their WhatsApp subscription has run out (aiming to dupe them into disclosing payment details) or impersonating a friend or relative and asking for money to be transferred to help with an emergency.

### DISAPPEARING MESSAGES

Users can set WhatsApp messages to disappear in 24 hours, 7 days or 90 days by default. Photos and videos can also be instructed to disappear after the recipient has viewed them. These files can't be saved or forwarded – so if your child was sent an inappropriate message, it would be difficult to prove any wrongdoing. However, the receiver can take a screenshot and save that as evidence.

### ENABLING FAKE NEWS

WhatsApp has unfortunately been linked to accelerating the spread of dangerous rumours. In India in 2018, some outbreaks of mob violence appear to have been sparked by false allegations being shared on the app. WhatsApp itself took steps to prevent its users circulating hazardous theories and speculation in the early weeks of the Covid-19 pandemic.

### POTENTIAL CYBERBULLYING

Group chat and video calls are great for connecting with multiple people in WhatsApp, but there is always the potential for someone's feelings to be hurt by an unkind comment or joke. The 'only admins' feature gives the admin(s) of a group control over who can send messages. They can, for example, block people from posting in a chat, which could make a child feel excluded and upset.

### CONTACT FROM STRANGERS

To start a WhatsApp chat, you only need the mobile number of the person you want to message (the other person also needs to have the app). WhatsApp can access the address book on someone's device and recognise which of their contacts also use the app. So if your child has ever given their phone number to someone they don't know, that person could use it to contact them via WhatsApp.

### LOCATION SHARING

The 'live location' feature lets users share their current whereabouts, allowing friends to see their movements. WhatsApp describes it as a "simple and secure way to let people know where you are." It is a useful method for a young person to let loved ones know they're safe – but if they used it in a chat with people they don't know, they would be exposing their location to them, too.

## Advice for Parents & Carers

CLICK HERE

### CREATE A SAFE PROFILE

Even though someone would need a child's phone number to add them as a contact, it's also worth altering a young person's profile settings to restrict who can see their photo and status. The options are 'everyone', 'my contacts' and 'nobody' – choosing one of the latter two ensures that your child's profile is better protected.



### EXPLAIN ABOUT BLOCKING

If your child receives spam or offensive messages, calls or files from a contact, they should block them using 'settings' in the chat. Communication from a blocked contact won't show up on their device and stays undelivered. Blocking someone does not remove them from your child's contact list – so they also need to be deleted from the address book.



### REPORT POTENTIAL SCAMS

Young people shouldn't engage with any message that looks suspicious or too good to be true. When your child receives a message from an unknown number for the first time, they'll be given the option to report it as spam. If the sender claims to be a friend or relative, call that person on their usual number to verify it really is them, or if it's someone trying to trick your child.



### LEAVE A GROUP

If your child is in a group chat that is making them feel uncomfortable, or has been added to a group that they don't want to be part of, they can use WhatsApp's group settings to leave. If someone exits a group, the admin can add them back in once; if they leave a second time, it is permanent.



### THINK ABOUT LOCATION

If your child needs to use the 'live location' function to show you or one of their friends where they are, advise them to share their location only for as long as they need to. WhatsApp gives a range of 'live location' options, and your child should manually stop sharing their position as soon as it is no longer needed.



### DELETE ACCIDENTAL MESSAGES

If your child posts a message they want to delete, WhatsApp allows the user seven minutes to erase a message. Tap and hold on the message, choose 'delete' and then 'delete for everyone'. However, it's important to remember that recipients may have seen (and taken a screenshot of) a message before it was deleted.



### CHECK THE FACTS

You can now fact-check WhatsApp messages that have been forwarded at least five times, by double-tapping the magnifying glass icon to the right of the message. From there, your child can launch a Google search and decide for themselves whether the message was true or not.



## Meet Our Expert

Parven Kaur is a social media expert and digital media consultant who is passionate about improving digital literacy for parents and children. She has extensive experience in the social media arena and is the founder of Kids N Clicks: a web resource that helps parents and children thrive in a digital world.



National Online Safety®

#WakeUpWednesday



[www.nationalonlinesafety.com](http://www.nationalonlinesafety.com)



@natonlinesafety



/NationalOnlineSafety



@nationalonlinesafety



# SPORTS FIXTURES

## Monday 20<sup>th</sup> February 2023

- Under-15 Boys' Football Home (MDPF) Game against Ark Globe. Leave school at 1.50pm. 2.30pm Start. Return at 5pm approx.: **Mr Price**

## Tuesday 21<sup>st</sup> February 2023

- Under-12s Girls' Netball Away Game against Sydenham Girls' School. Leave school at 3.30pm. 4.15pm Start. Return at 5.30pm approx.: **Ms Thomas**

## Wednesday 22<sup>nd</sup> February 2023

- Under-13s Boys' Rugby Home (MDPF) Game against Carshalton Boys' School. Leave school at 2.30pm. 3.15pm Start. Return at 4.45pm approx.: **Mr McWhirter**
- Under-13s Girls' Hockey Tournament at JAGS (Dulwich). Leave school at 8.30am. 9.15pm Start. Return at 3.30pm approx.: **Ms Thomas**

## Thursday 23<sup>rd</sup> February 2023

- Under-15s Boys' Football Home (MDPF) Game against Central Foundation School. Leave school at 1pm. 2pm Start. Return at 4.30pm approx.: **Mr Price**
- Under-12s Boys' Hockey Tournament Away Game against Eltham College. Leave school at 8am. 9.30am Start. Return at 3.30pm approx.: **Mr Pizzey/Ms Thomas**

## Friday 24<sup>th</sup> February 2023

- Under-13s Boys' Hockey Tournament Away Game against Eltham College. Leave school at 8am. 9.30am Start. Return at 3.30pm approx.: **Mr Pizzey**
- Under-16 Girls Rugby 7's Tournament Away Game against Reigate Grammar School. Leave school at 8am. 10.30am Start. Return at 5.30pm approx.: **Mr Worsley/Ms Cave/Mr Price**

\*Please Note Fixtures may get Cancelled due to Water-logged or frozen pitches.  
<http://www.kingsdaleschoolsports.org.uk>

## Student Suggestion Boxes

To promote our well-established and highly effective Student Voice programme, there are suggestion boxes, which are located outside of the Attendance Office in the Main Atrium and The Office of The Headteacher at the bottom of the Green Stairs.

Please encourage your child to use this facility to make suggestions about how we can continue to improve our provision.



# HOUSE NEWS



## ONLINE SAFETY CORNER

For this week's Online Safety focus, we have included some important tips for parents and carers about WhatsApp. These can be found on the previous page.

Always have an open and frank conversation with your child about the **FOUR C's**:

- **CONTENT**  
What information does your child have access to online?
- **CONDUCT**  
What is the behaviour of your child when online?
- **CONTACT**  
Who are they communicating with online?
- **COMMERCE**  
What is your child spending online? Are they also at risk of potentially gambling?

## The House Leader Board 2022-23

Week ending 10<sup>th</sup> February 2023

- 1st Place – Swift 23,439 Points
- 2nd Place – Dove 20,854 Points
- 3rd Place – Albatross 19,108 Points
- 4th Place – Falcon 18,621 Points
- 5th Place – Eagle 16,718 Points

Swift are leading the race and pulling further away! Can another House close the gap this half-term?