

WEST OF ENGLAND JOINT SPATIAL PLAN

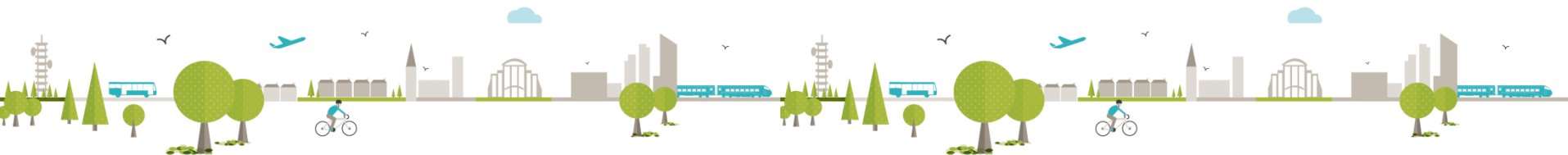


“A PROSPECTUS FOR
SUSTAINABLE GROWTH”

Bath & North East
Somerset Council



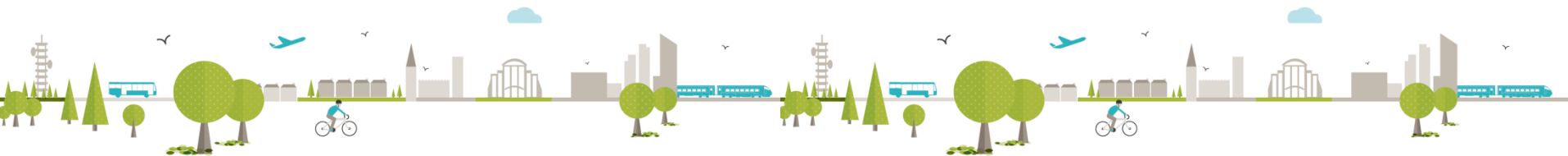
- 4:30 - Barbara Davies, West of England LEP
- 4:40 - Cllr Elfan Ap Rees, Chairman of West of England Planning, Housing and Communities Board
- 5:00 - David Turner and Louise Fradd - a Prospectus for Sustainable Growth
- 5:30 - Peter Studdert with lessons from elsewhere
- 6:00 - Q&A
- 6:30 - Finish with a drink



Councillor Elfan Ap Rees

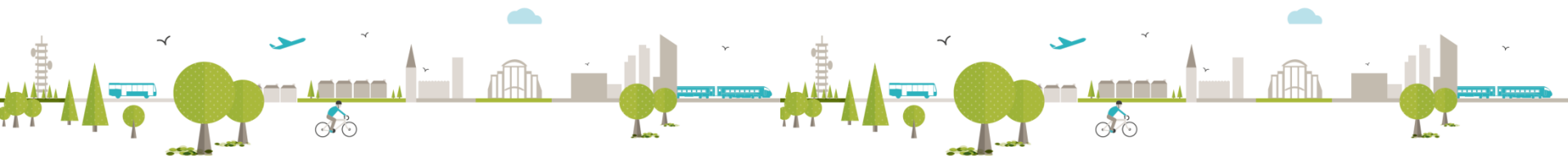
Chairman

West of England Planning Housing and Communities Board
Deputy Leader North Somerset Council



The Home of Knowledge, Innovation and Quality of Life

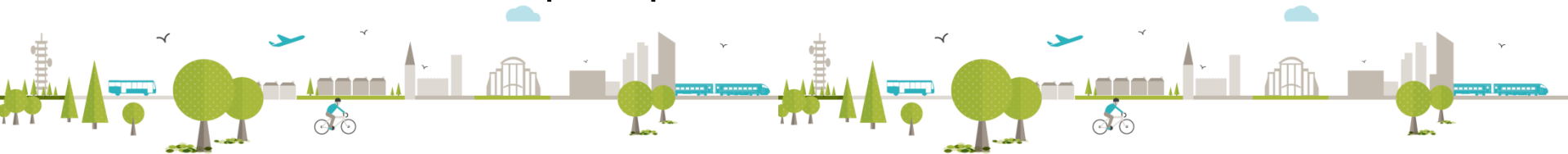
- Highly competitive and growing economy
- Clearly defined travel to work area with major new transport investment being delivered
- Strong academic profile and wide ranging skills base
- Strong environmental credentials, unique heritage and natural environment
- Growing reputation for delivery
- Clearly defines LEP an 4UAs
- West of England Partnership – mature relationship



A Prospectus for Sustainable Growth

Guiding principles:

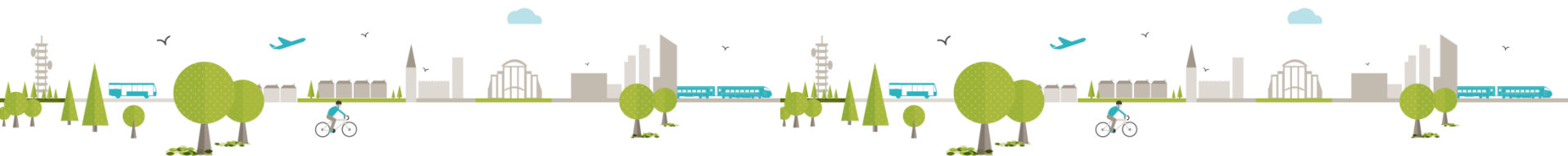
- Commitment to a plan-led approach to guide future development and secure funding for essential infrastructure
- Balance the need for growth and development with the need to secure quality of life and a strong environmental future
- Adopt a sequential approach to development using previously developed land and making best use of our existing urban areas
- Ensure our transport plans are coordinated with the JSP



Why a Joint Spatial Plan is needed

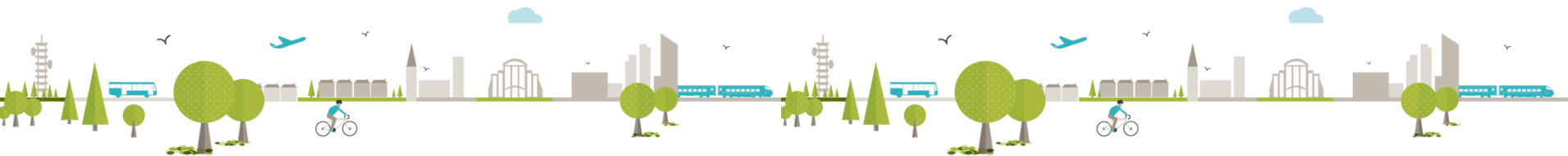
Key components:

- Meeting and exceeding the requirements of the Duty of Cooperate
- Need to coordinate the reviews of existing Local Plans which are coming to the end of their plan periods
- Need to respond to new housing and employment growth requirements
- Roll forward existing planning frameworks to 2036 with a baseline of 2016
- Will be prepared on a statutory basis with formal consultation, public and stakeholder engagement and external examination



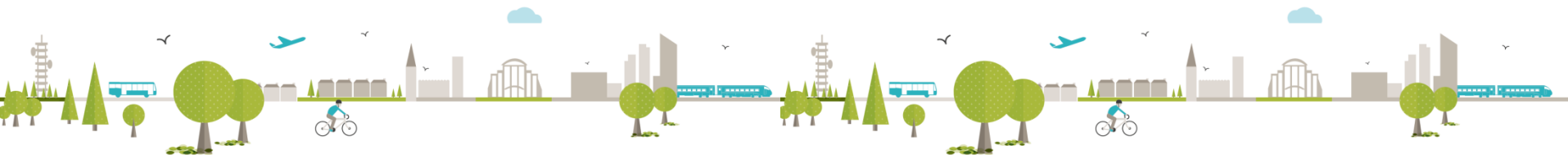
Scope of the Joint Spatial Plan

- Vision and spatial objectives
- Spatial strategy
- Housing requirement
- Employment
- Infrastructure



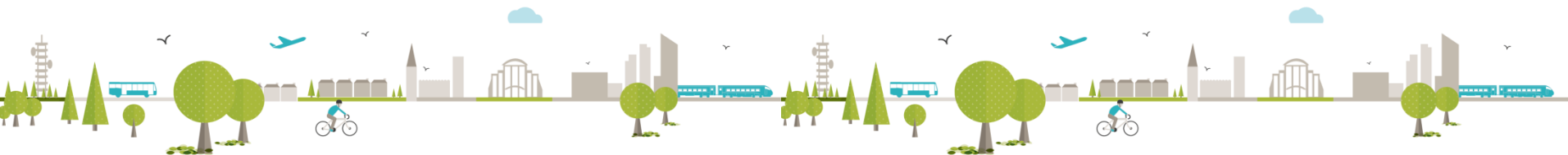
New opportunities, new training , new connectivity

- Connecting skills to jobs
- Connecting through Infrastructure
- Connecting jobs to homes
- Sustainable communities supporting a competitive and growing economy



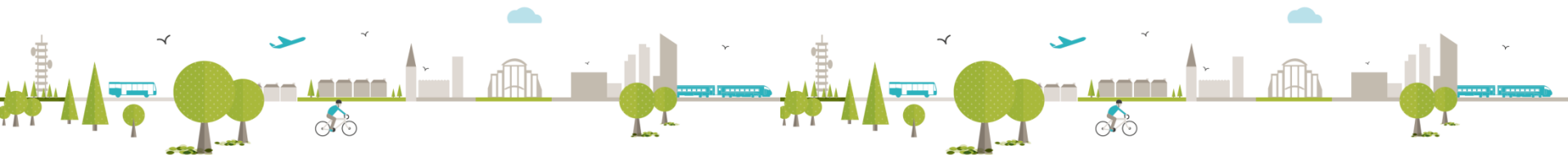
Identify the strategic infrastructure proposals

- Inform the JSP: Issues and options
- Phased approach
- Provide framework for future investment
- Ensure the existing policies are sound
- Inform a potential review of the Joint Transport Plan



Outcome: Delivery of balanced and sustainable communities

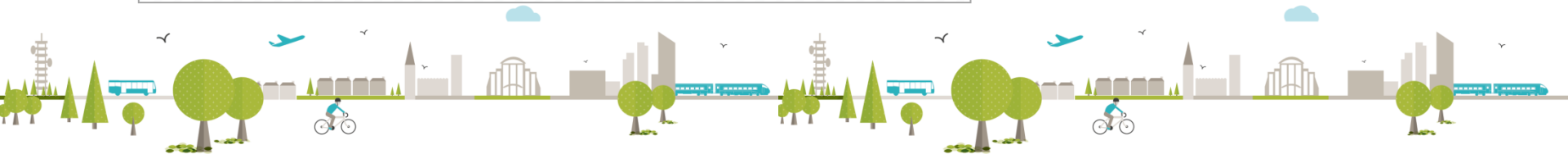
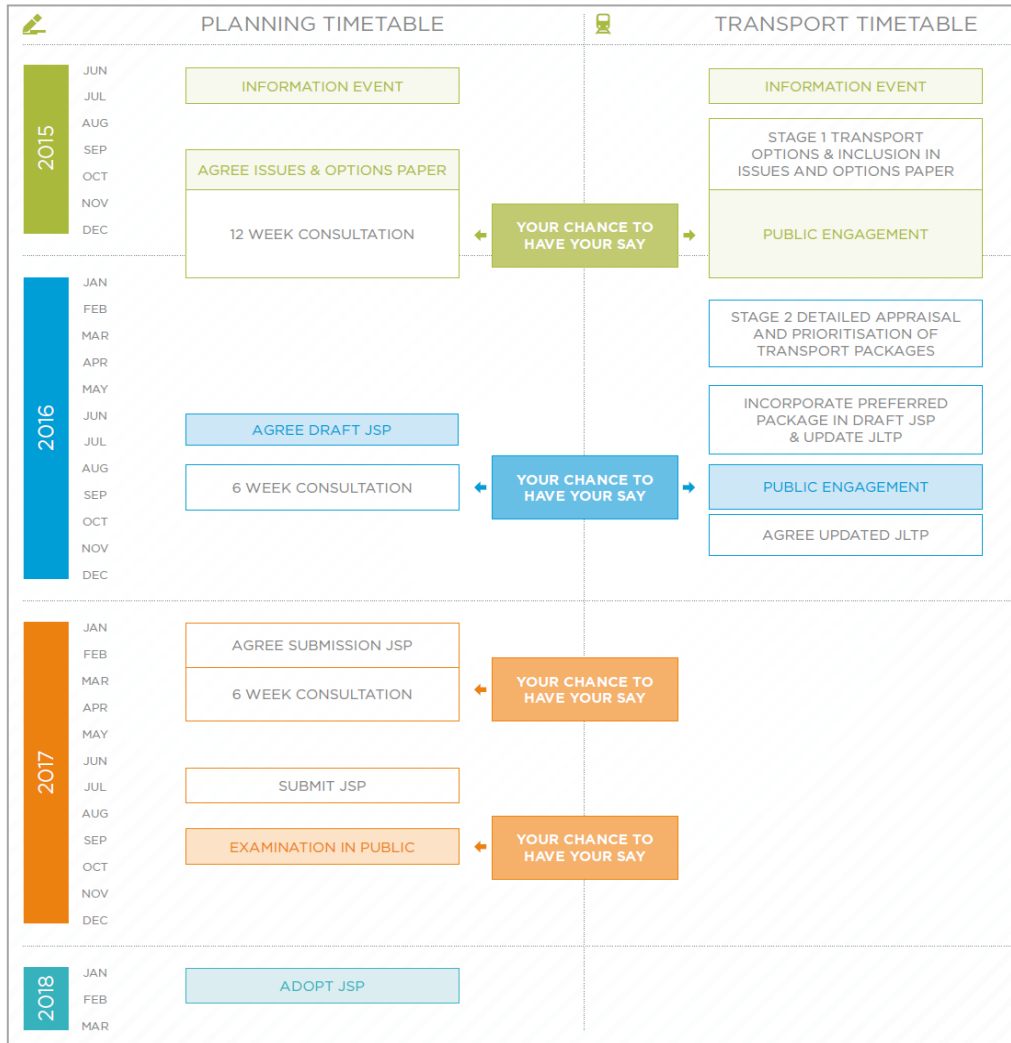
- Manage growth whilst maintaining our quality of life, beautiful coast and countryside
- A transport network that meets the needs of people and business
- To address housing and social inequalities
- To maximise connectivity between homes, jobs and delivery networks



Timetable

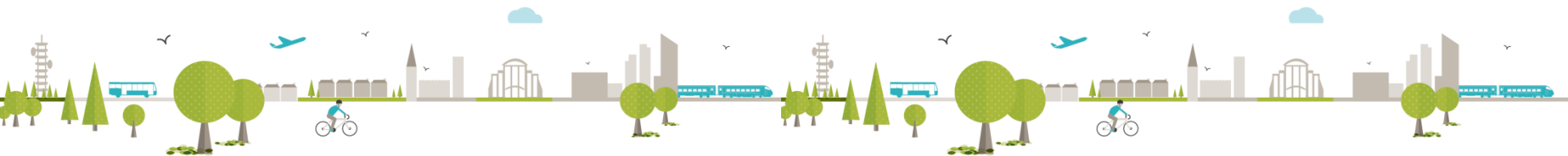


“A PROSPECTUS FOR SUSTAINABLE GROWTH”





Questions?



WEST OF ENGLAND JOINT SPATIAL PLAN



“A PROSPECTUS FOR
SUSTAINABLE GROWTH”

Bath & North East
Somerset Council

