

NEW YORK - HERE WE COME!

SÄV. MATTI KALLIO
 SAN. ANNA LAUKKARINEN + TYÖRYHMÄ
 SOV. MATTI KALLIO

INTRO

♩ = 115

Am⁷

D⁷

G

C

G D(SUS4) D

NEW



81

5

G

Em

G

E/G#

Am⁷

∞

D⁷



YORK, NEW YORK GET READ-Y! HERE WE COME! NEW YORK, NEW YORK. LET'S

11

Am⁷

D⁷

G

A1

C

G

Am

D⁷



GO AND HAVE SOME FUN! I WANT TO SEE MAN-HAT-TAN... I'M GO-ING TO BRONX

16

G⁷

C

A/C#

G/D

Em

A⁷

D C/D

D D⁷



ZOO. ARE THERE QUEENS IN QUEENS? I MUST SEE BROOK-LYN, TOO. NEW

22

G

Em

G

E/G#

Am⁷

∞

D⁷



YORK, NEW YORK GET READ-Y! HERE WE COME! NEW YORK, NEW YORK. LET'S

28

Am⁷

D⁷

G

A2

C

G



GO AND HAVE SOME FUN! STA-TEN IS - LAND ISN'T FAR. LET'S

32

Am

D⁷

G⁷

C

A/C#

G/D

Em

A⁷



TAKE A FER-RY THERE. NEW YORK, HERE WE COME! LET'S GO AND HAVE SOME

37

RALL.

♩ = 102

37

D

E^b

/F

/G^b

/G

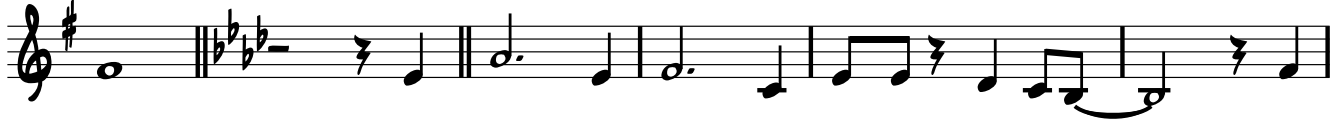
A^b

F^m

A^b

F/A

B^bm⁷



FUN. NEW YORK, NEW YORK GET READ-Y! HERE WE COME! NEW

43 Coda Eb^7 Bbm^7 Eb^7 Ab **CODA**

YORK. NEW YORK. LET'S GO AND HAVE SOME FUN! _____

POCO RALL.

47 Bbm^7 Eb^7 Fbmaj^7 Eb(sus4) Abmaj^7

3 3