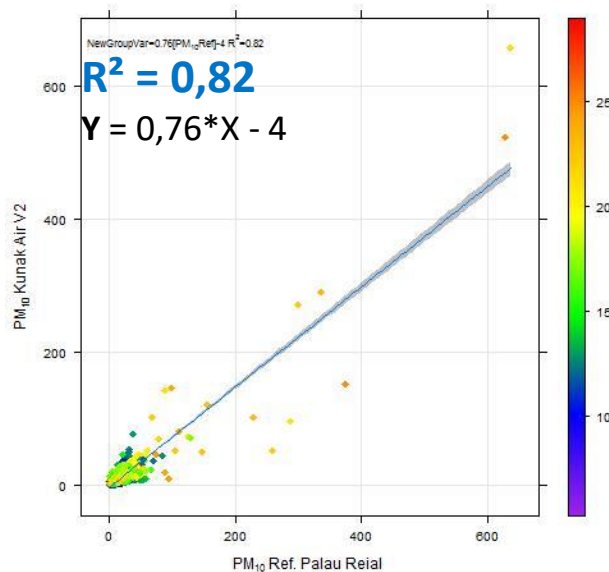
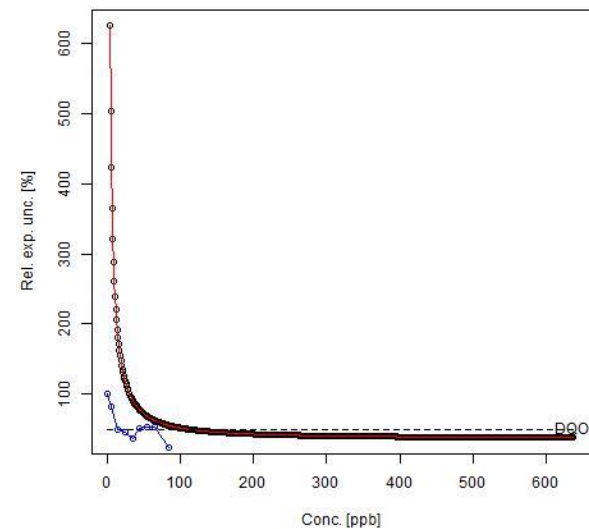


Comments: good linear relationship and correlation between the KUNAKAIR V2 (red color) and the reference instrument in the AQS (bluet color). High concentration values are easier to track than low concentration values.

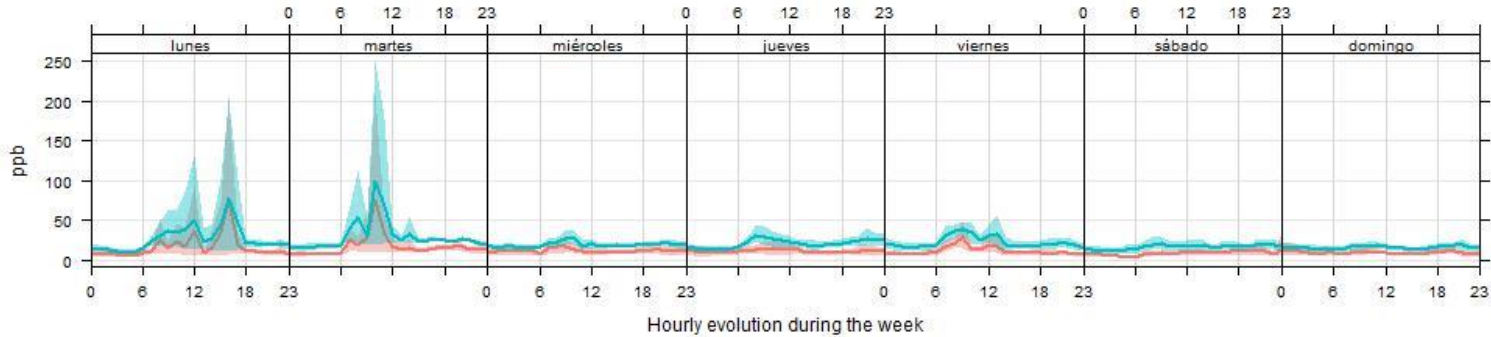
Version: KUNAKAIR V2.



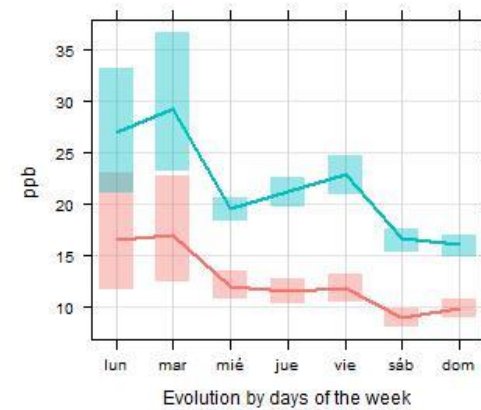
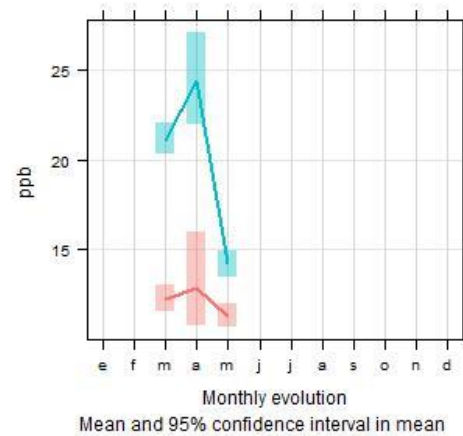
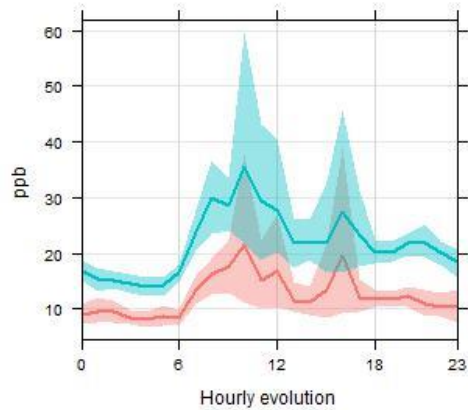
DQO / Relative error / Expanded Uncertainty



Time variation of Kunak Air V2 and Ref. Palau Reial : PM₁₀



PM₁₀ Kunak Air V2 PM₁₀ Ref. Palau Reial



R ²	ACCY (UG/M3)	90% CONF. (UG/M3)	DOQ (UG/M3)	AVG. GC. REF (UG/M3)	AVG. GC. DUT (UG/M3)	AV REF/DUT
0,82	10,37	12,38	104	15,88	21,6	95% / 99,3%

Comments: Daily, weekly and monthly trends are tracked, although averages concentrations suggest that a calibration should be required to obtain more accurately absolute average concentrations.