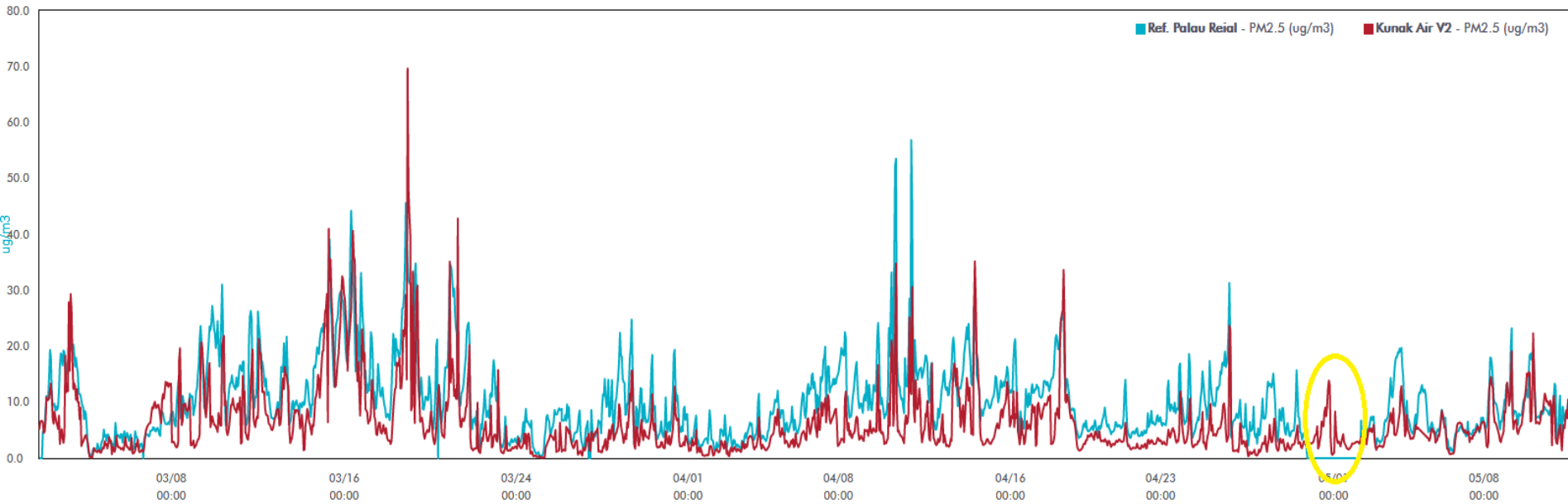
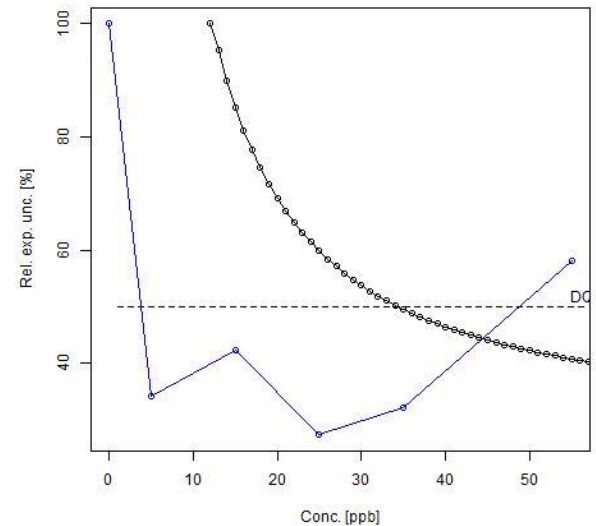
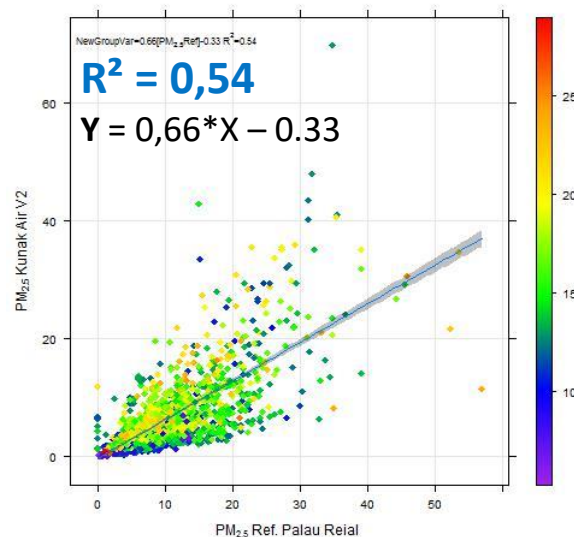


# PM2.5, BARCELONA (Spain), MAR'17-MAY'17



## DQO / Relative error / Expanded Uncertainty

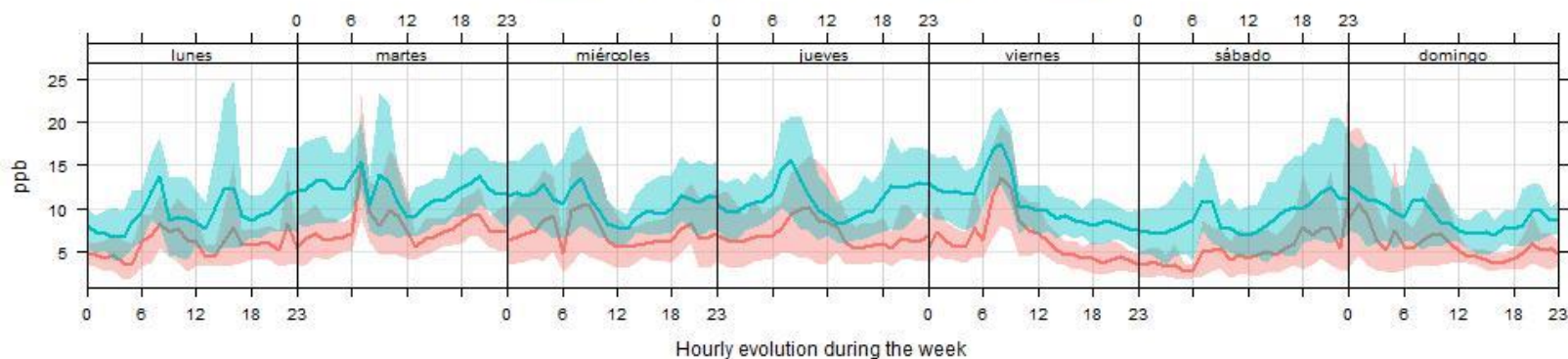
**Comments:** weak linear relationship and correlation between the KUNAKAIR V2 (red color) and the reference instrument in the AQS (blue color). Time series shows that the KUNAKAIRV2 follows the reference trends. However, underestimates the mass concentration, suggesting that a calibration is required.



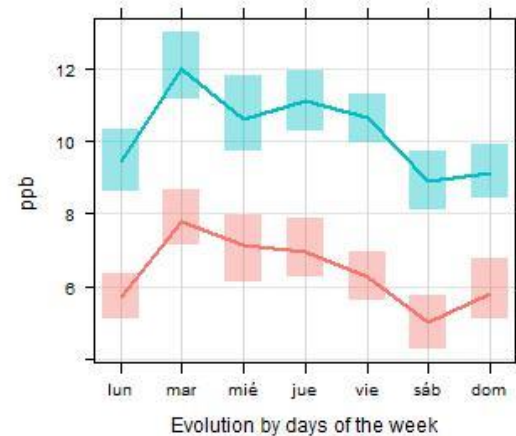
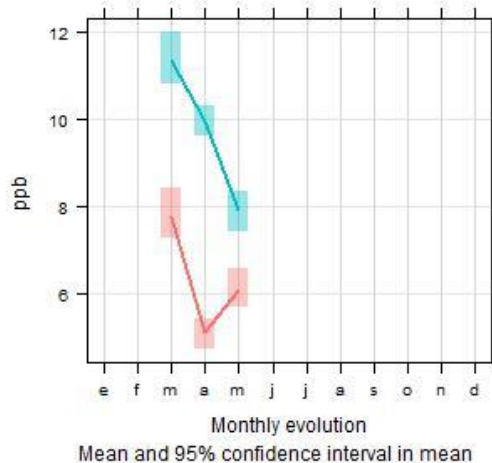
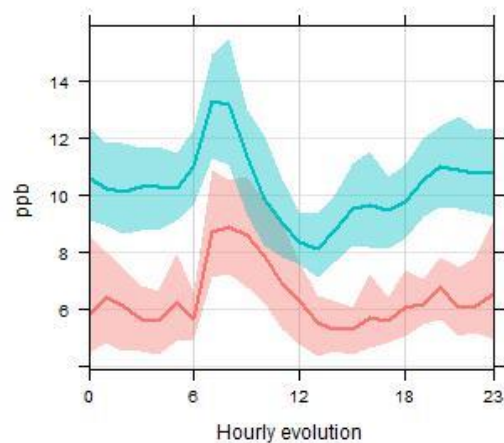
**Version:** KUNAKAIR V2.

# PM2.5, BARCELONA (Spain), MAR'17-MAY'17

Time variation of Kunak Air V2 and Ref. Palau Reial : PM<sub>2.5</sub>



PM<sub>2.5</sub> Kunak Air V2      PM<sub>2.5</sub> Ref. Palau Reial



R <sup>2</sup>	ACCY (UG/M3)	90% CONF. (UG/M3)	DOQ (UG/M3)	AVG. GC. REF (UG/M3)	AVG. GC. DUT (UG/M3)	AV REF/DUT
0,54	4,65	10,02	34	10,3	6,42	96,5% / 99,3%

**Comments:** Daily and weekly trends are tracked, although averages concentrations suggest that a calibration should be require to obtain more accurately absolute average concentrations. DQO is met above 34ug/m3.