

Operation cycle of a GMV vehicle lift

VL[®] 35

Example lift of 3-stops and 6m travel

Characteristics:

Speed: $v = 0,3 \text{ m/s}$

Travel: $H_p = 6 \text{ m}$

No of stops: 3

Level „0”: 0,00 m

Level „-1”: -3,00 m

Level „-2”: -6,00 m

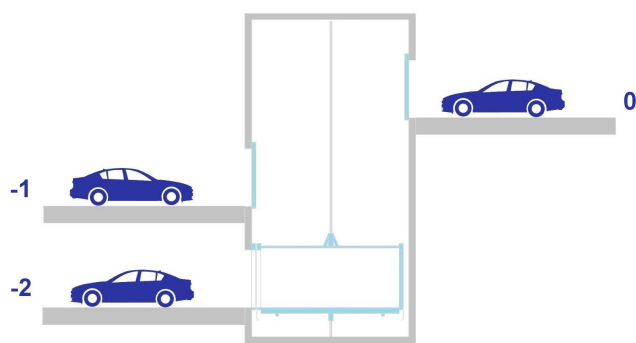


Table 1.1 Approximate travel times of GMV lift VL[®] 35 between stops:

	Travel from „0” to „-1”	Travel from „0” to „-2”
Opening the doors	4 s	4 s
Entrance to the cabin and off the vehicle engine	20 s	20 s
Disposition of the lift and waiting for door closing	14 s	14 s
Closing the doors	4 s	4 s
Starting the vehicle lift	6 s	6 s
Travelling	12 s	22 s
Opening the doors	4 s	4 s
Starting the vehicle engine and leaving the cabin	15 s	15 s
Closing the doors	4 s	4 s
Travelling to „0” level and opening the doors	17 s	27 s
Approximate time of one cycle	1 min 40 s	2 min

VL[®]- GMV Vehicle Lifts - the most perfect lift devices to carry vehicles that have ever been invented.