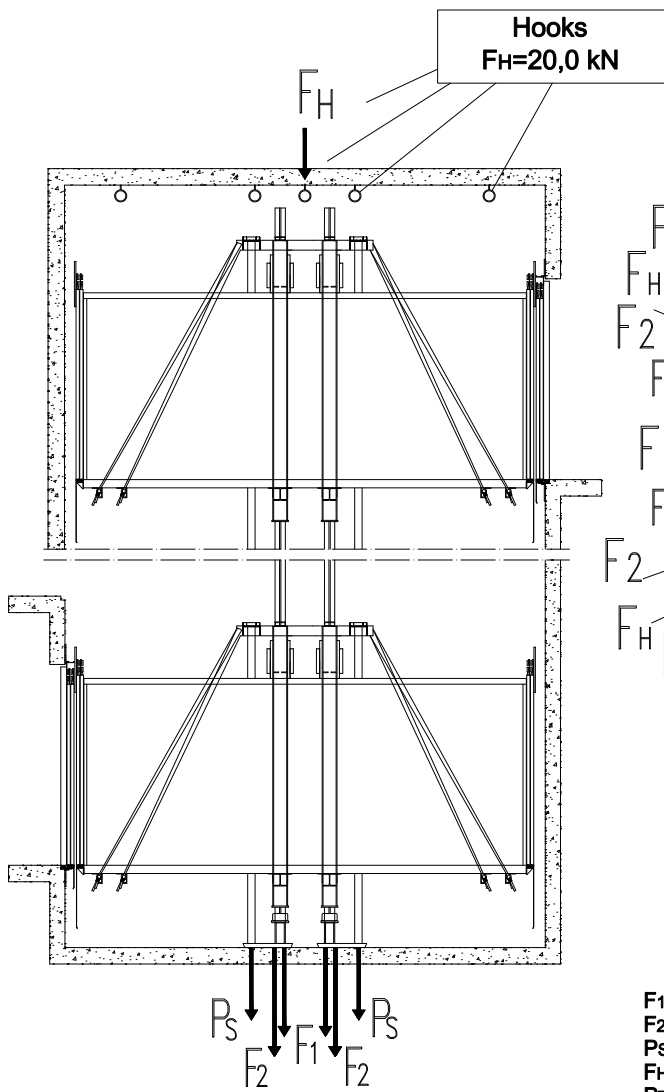


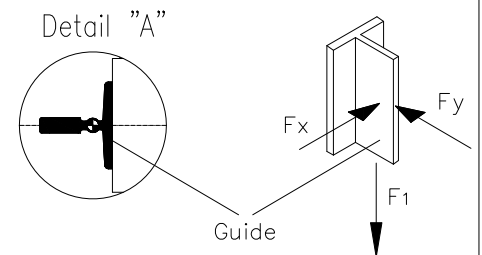
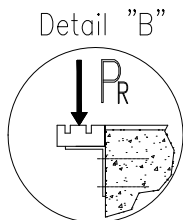
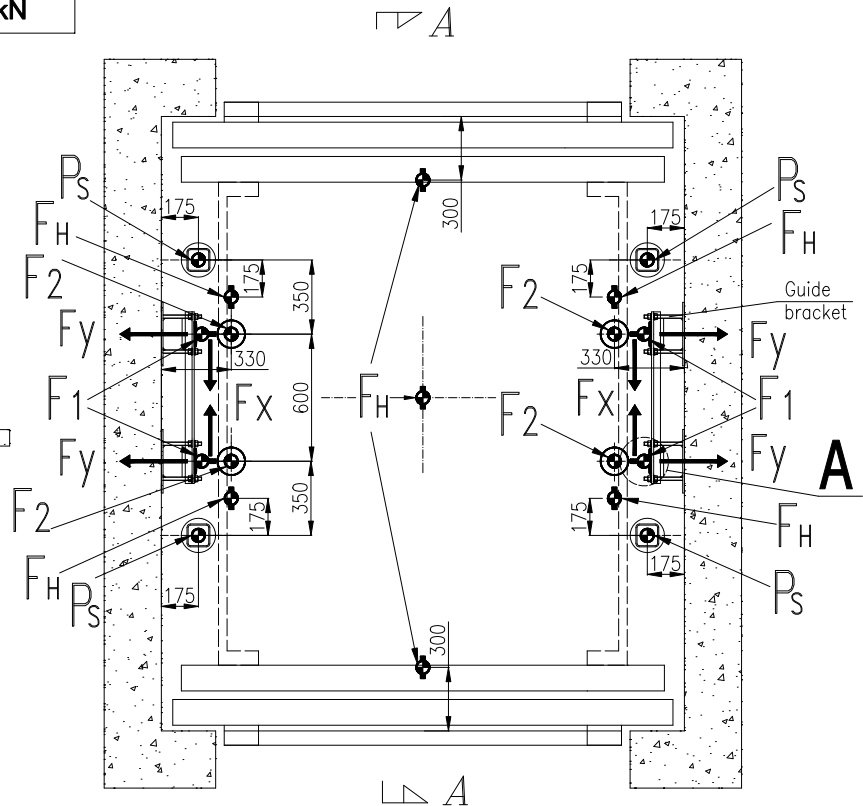
# FORCES ON PIT FLOOR

Payload [kg]	$F_x$ [kN]	$F_y$ [kN]	Vertical force under guide $F_1$ [kN]	Vertical force under buffer $F_2$ [kN]	Vertical force under piston $P_s$ [kN]	Emphasis on sill $P_R$ [kN]
5000-11000	12,8	10,6	3,4	41,2	49,9	64,7

*SHAFT SECTION A-A*



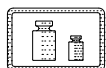
*SHAFT PLAN*



- $F_1$  - vertical force under guide
- $F_2$  - vertical force under buffer
- $P_s$  - vertical force under piston
- $F_H$  - vertical force affecting hook
- $P_R$  - emphasis on sill

**ATTENTION:**  
 $F_2$  - static load exerted by the weight of the loaded car (vertical force under buffer)  $F_2$  [N] = (weight of the empty car and frame + nominal load) \* 9,81  
 Pit floor under buffer pillars should move quadruple load resulting from the force  $F_2$  (PN-EN 81-2 p:5.3.2.2)

**IN ORDER TO FIND EXACT POSITION OF FORCES IN THE SHAFT USE THE DRAWINGS OF SPECIFIC LIFT**



Name: CONSTRUCTION DIRECTIVES	Change	Date	Description		
Description: Forces on Pit floor SUPER-VL 5000-11000 kg	<b>4-8</b>		No. of catalogue:	No. of drawing:	Date version:
			Date:	GMV.S-VL.S	24.05.2016
			23.09.2011	Version:	2.6

