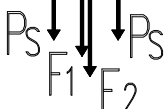
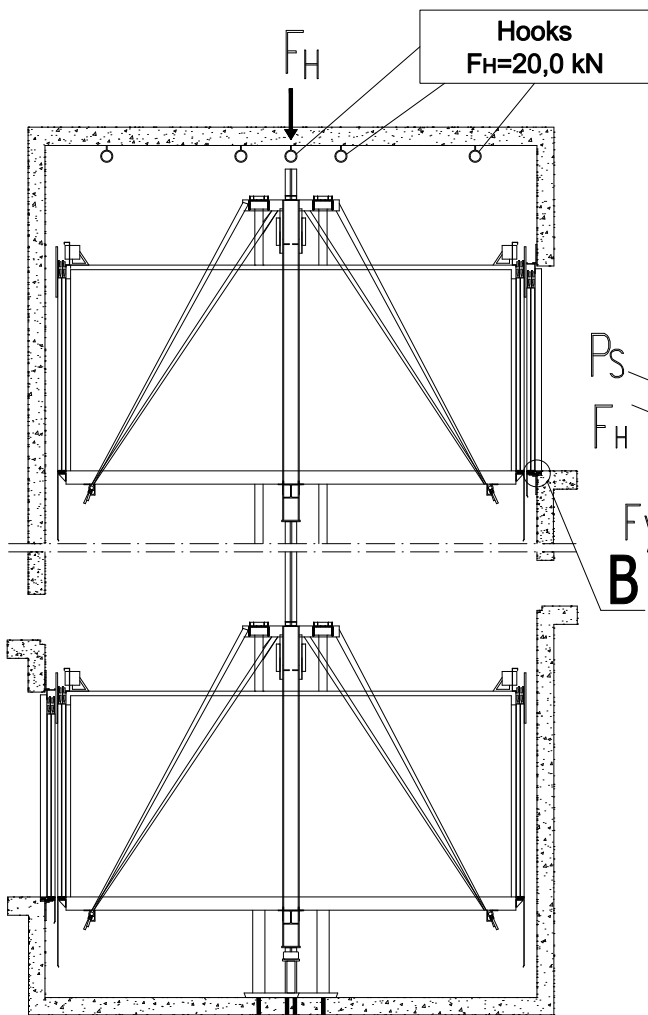


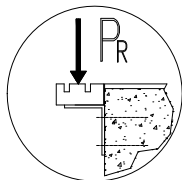
FORCES ACTING ON SHAFT

Payload [kg]	F_x [kN]	F_y [kN]	Vertical force under guide F_1 [kN]	Vertical force under buffer F_2 [kN]	Vertical force under piston P_s [kN]	Emphasis on sill P_R [kN]
3000	9,6	7,2	2,6	33,1	37,7	17,7
3500	12,1	9,7	3,4	38,2	41,1	20,6
4000	14,8	11,3	4,4	45,8	49,2	23,5

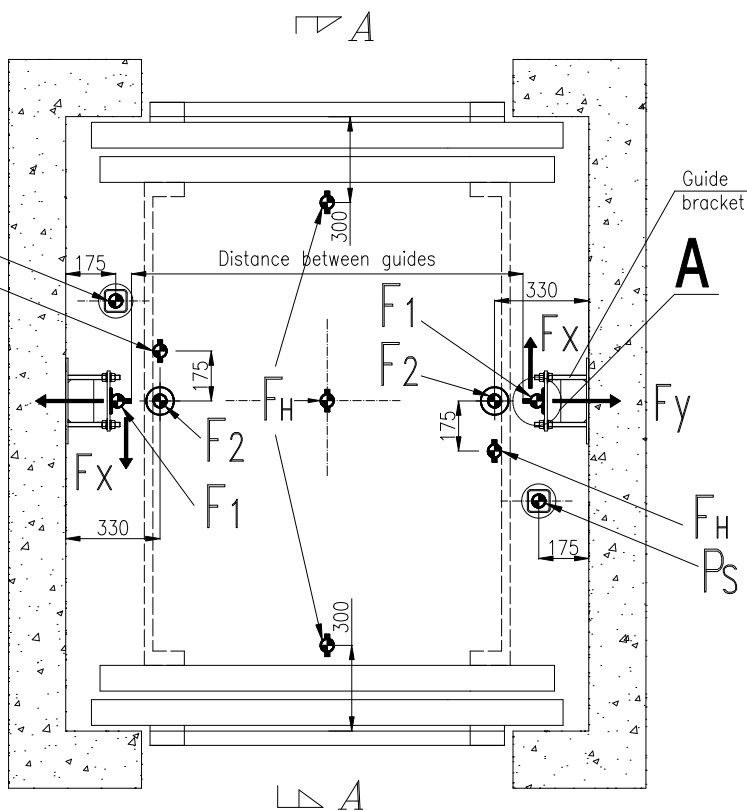
VERTICAL SECTION A-A



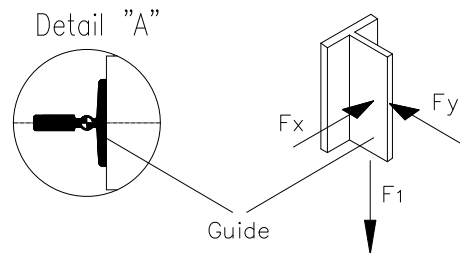
Detail "B"



PLAN VIEW



Detail "A"

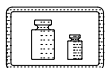


- F_1 - vertical force under guide
- F_2 - vertical force under buffer
- P_s - vertical force under piston
- F_H - vertical force affecting hook
- P_R - emphasis on sill

ATTENTION:

F_2 - static load exerted by the weight of the loaded car (vertical force under buffer) F_2 [N] = (weight of the empty car and frame + nominal load) * 9,81
Pit floor under buffer pilars should move quadruple load resulting from the force F_2 (PN-EN 81-2 p:5.3.2.2)

IN ORDER TO FIND EXACT POSITION OF FORCES IN THE SHAFT USE THE DRAWINGS OF SPECIFIC LIFT



Name: CONSTRUCTION DIRECTIVES

Description: FORCES ACTING ON SHAFT
VL 3000-4000 kg

Change	Date	Description	
No. of catalogue:	No. of drawing:	Date version:	GMV
Date:		Version:	
15.03.2013		3.2	